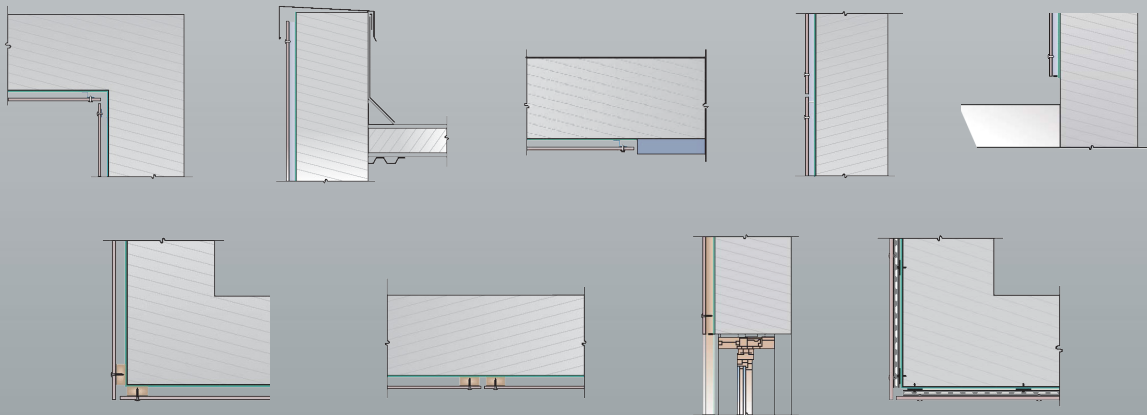


One-Layer Aluminum Attachment System with Rivets



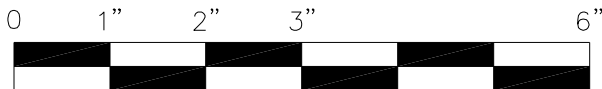
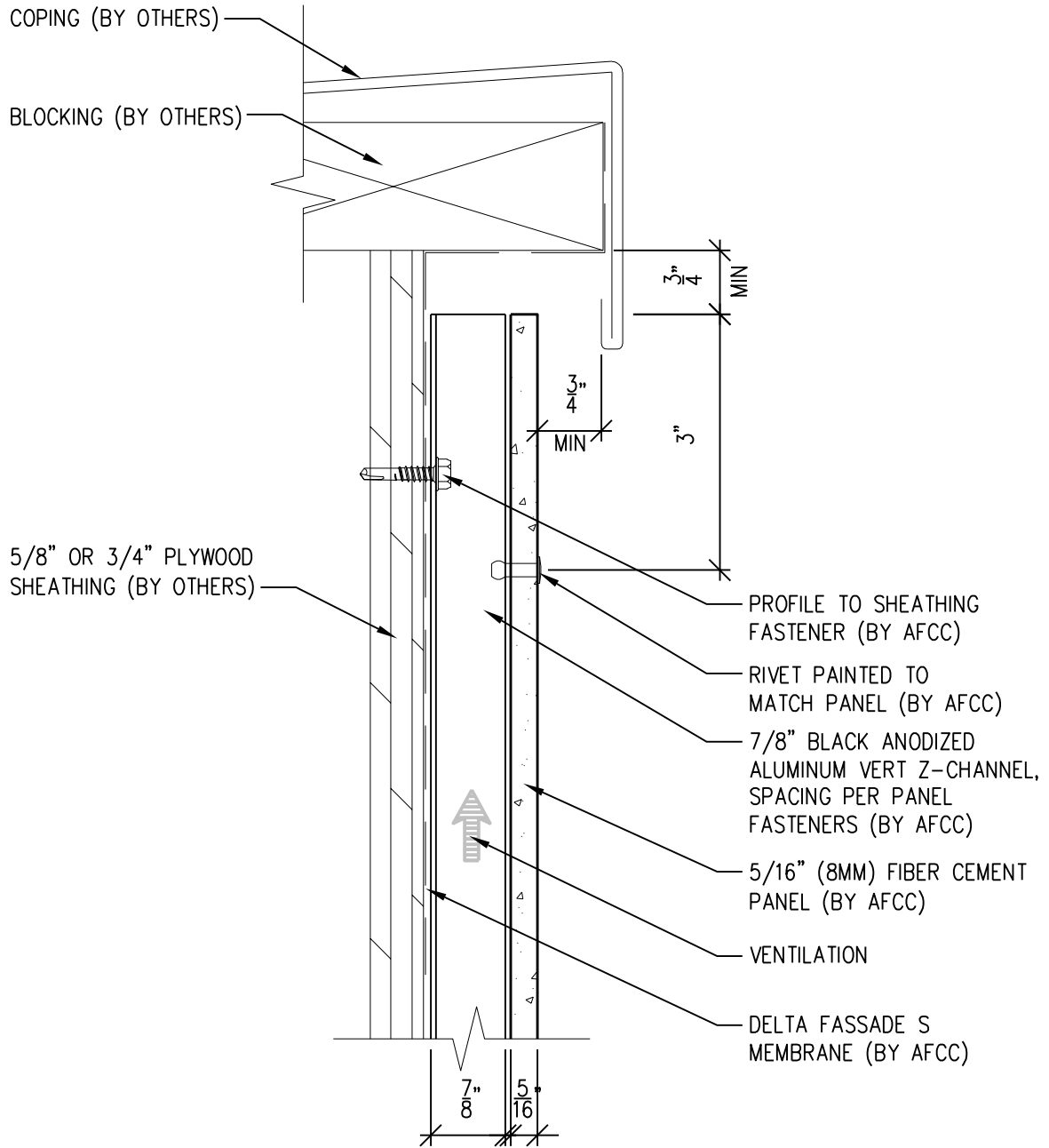


American Fiber Cement Corporation

Typical Details

- Page 3: Top Panel @ Coping
- Page 4: Top Panel @ Soffit
- Page 5: Top of Panel @ F.C.P Soffit
- Page 6: Horizontal Joint @ Continuous Substrate
- Page 7: Horizontal Joint @ Break In Substrate
- Page 8: Not Permitted @ Break in Substrate
- Page 9: Bottom of Panel @ Wall Base
- Page 10: Bottom of Panel @ Open Termination
- Page 11: Bottom of Panel @ Low Roof Flashing
- Page 12: Bottom of Panel @ Soffit
- Page 13: Bottom of Panel @ Soffit (Alternate)
- Page 14: Bottom of Panel @ F.C.P Soffit
- Page 15: Bottom of Panel @ F.C.P Soffit (Alternate)
- Page 16: Soffit Termination @ Adjacent Material
- Page 17: Bottom of Panel @ Window Head
- Page 18: Bottom of Panel @ Window Head (Alternate)
- Page 19: Top of Panel @ Window Sill
- Page 20: Panel Edge @ Window Jamb
- Page 21: Panel Edge @ Window Jamb (Alternate)
- Page 22: Vertical Panel Joint Option 1
- Page 23: Vertical Panel Joint Option 2
- Page 24: Panel Edge @ Butt Joint
- Page 25: Panels @ Outside Corner
- Page 26: Panels @ Inside Corner
- Page 27: Typical Fastener Layout

One-Layer Aluminum Attachment System



SCALE: 6" = 1'-0"

NOTES:

1. PANEL VERTICAL AND HORIZONTAL JOINT SPACING SHOULD BE 3/8" TYPICAL.



**American Fiber
Cement Corporation**

(303) 972-5107

www.americanfibercement.com

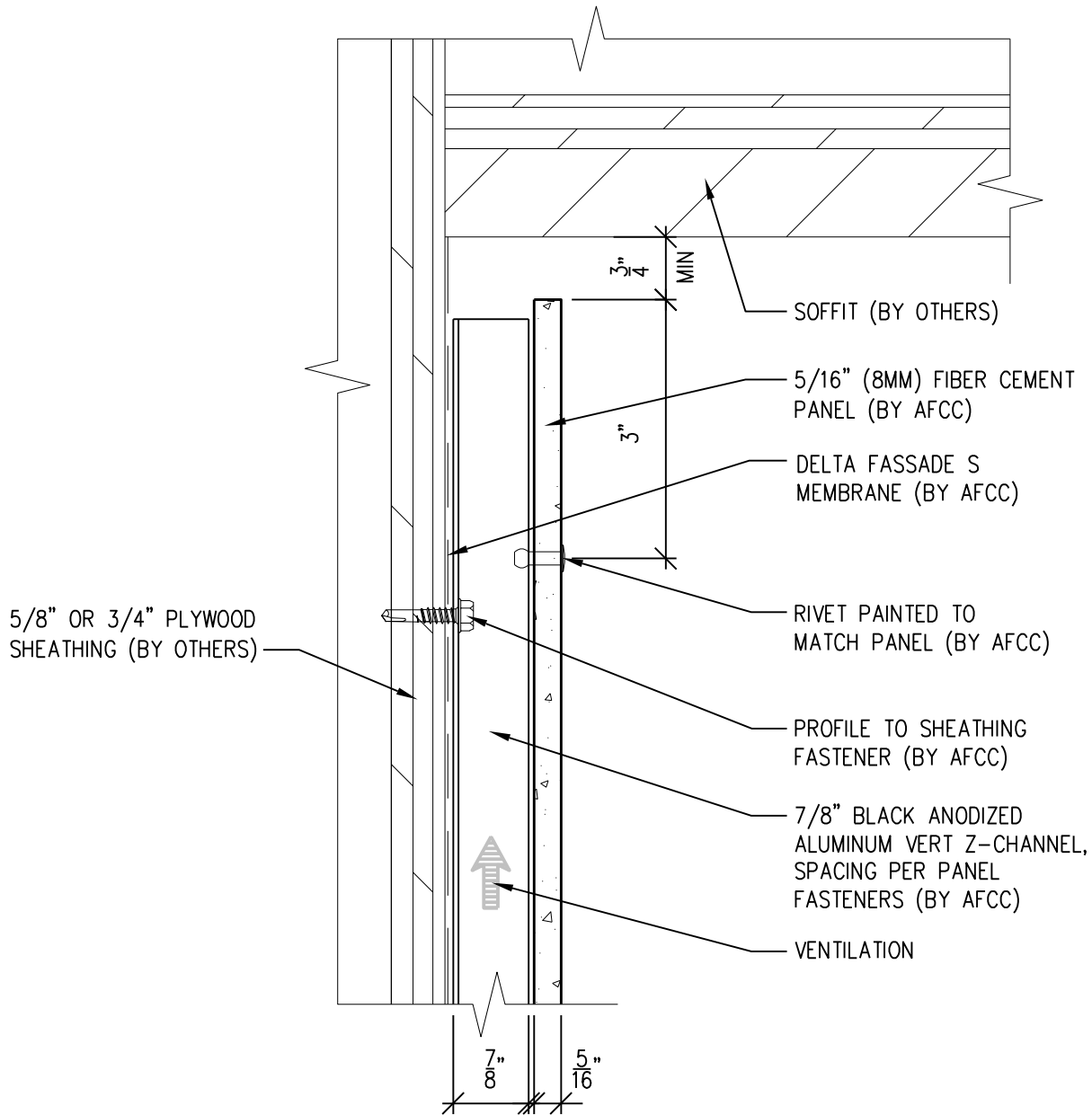
6901 S Pierce St #180, Littleton, CO 80128

Ref.:

Top of Panel @
Coping

Date: 11/19/2021

One-Layer Aluminum Attachment System



SCALE: 6" = 1'-0"

NOTES:

1. PANEL VERTICAL AND HORIZONTAL JOINT SPACING SHOULD BE 3/8" TYPICAL.



American Fiber Cement Corporation www.americanfibercement.com

(303) 972-5107

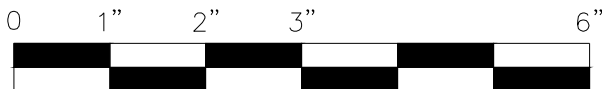
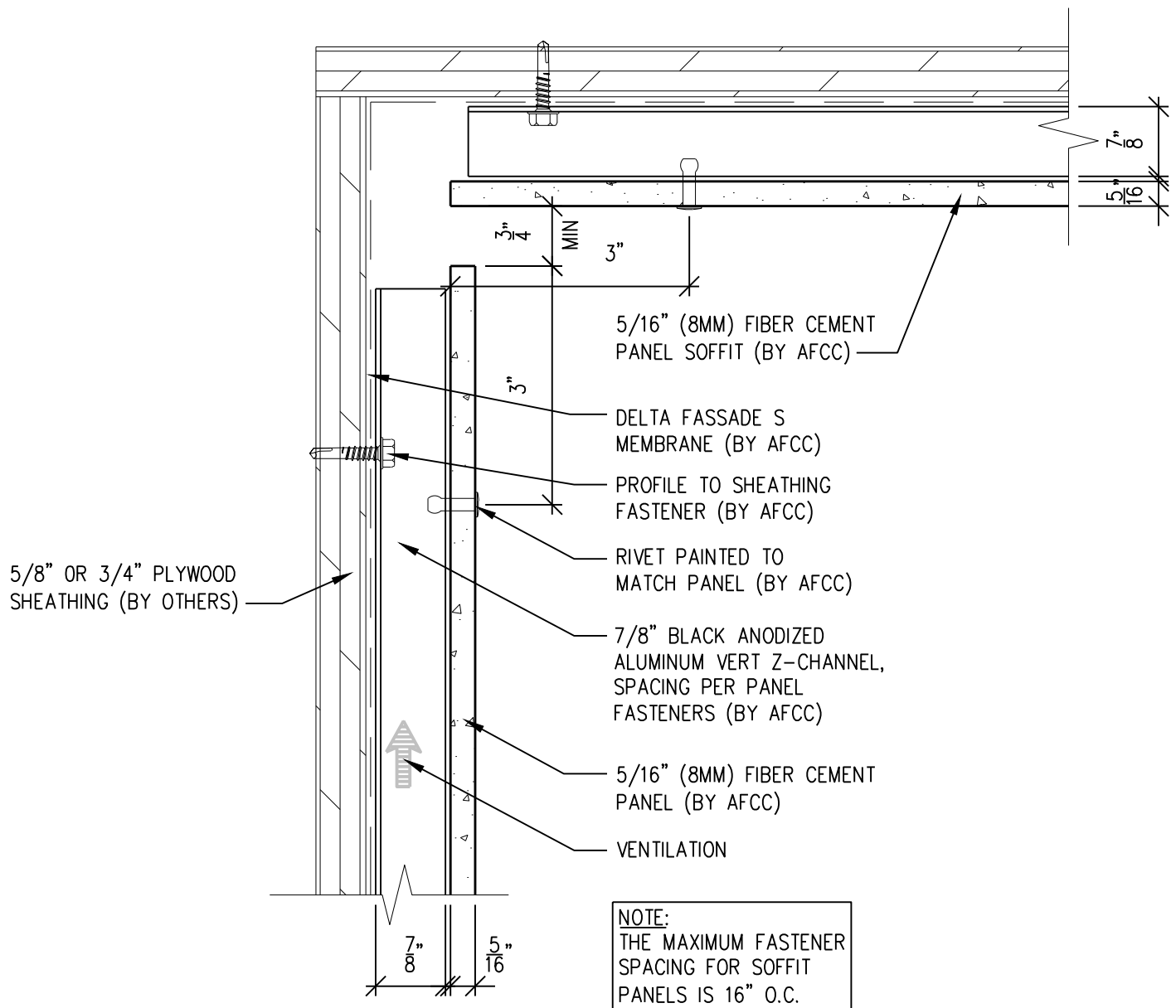
6901 S Pierce St #180, Littleton, CO 80128

Ref.:

Top of Panel @
Soffit

Date: 11/19/2021

One-Layer Aluminum Attachment System



SCALE: 6"=1'-0"

NOTES:

1. PANEL VERTICAL AND HORIZONTAL JOINT SPACING SHOULD BE 3/8" TYPICAL.



**American Fiber
Cement Corporation**

(303) 972-5107

www.americanfibercement.com

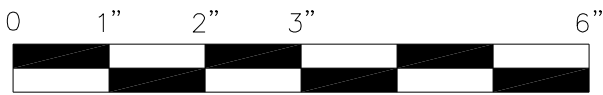
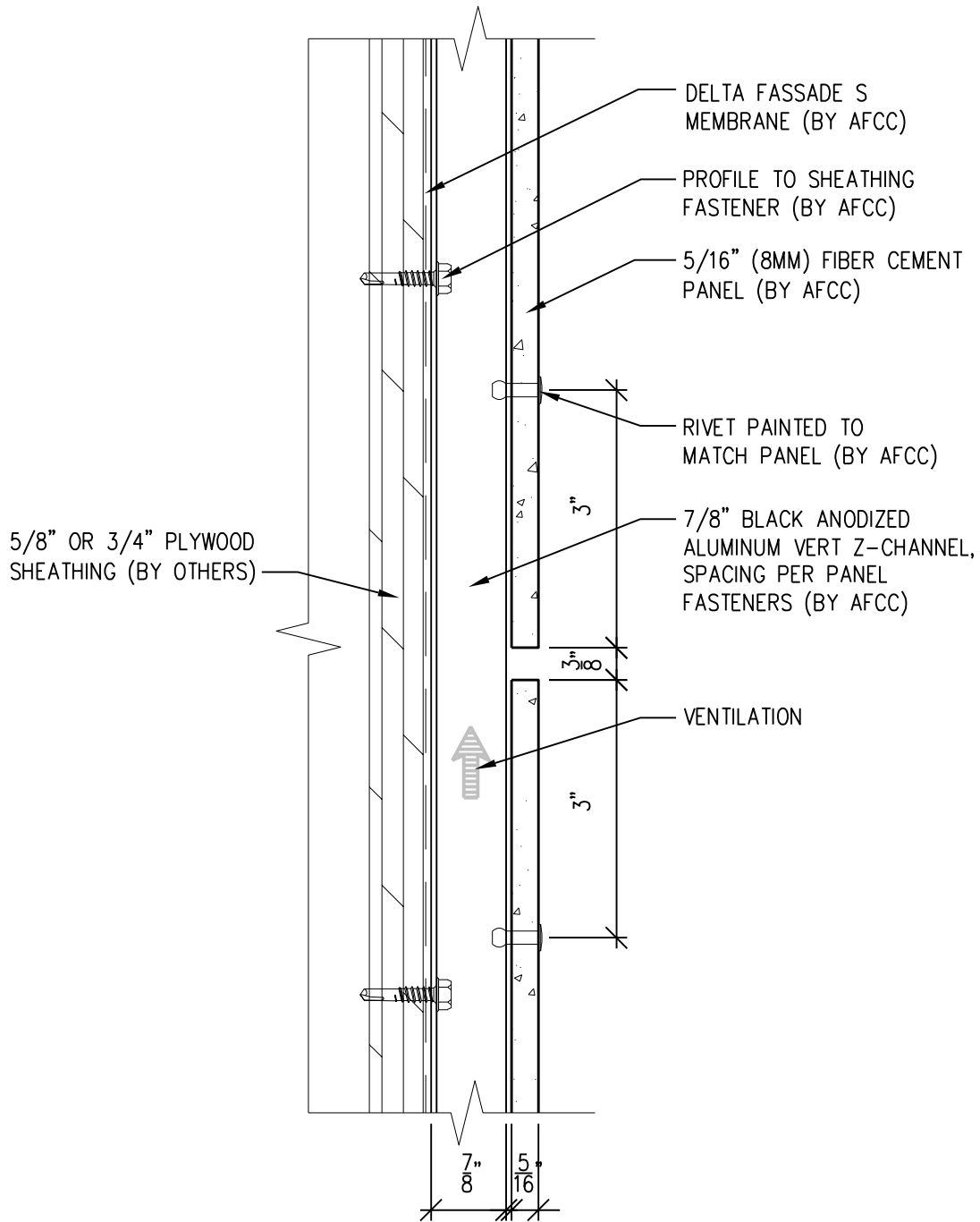
6901 S Pierce St #180, Littleton, CO 80128

Ref.:

Top of Panel @
F.C.P. Soffit

Date: 11/19/2021

One-Layer Aluminum Attachment System



SCALE: 6" = 1'-0"

NOTES:

1. PANEL VERTICAL AND HORIZONTAL JOINT SPACING SHOULD BE 3/8" TYPICAL.



American Fiber Cement Corporation (303) 972-5107
www.americanfibercement.com

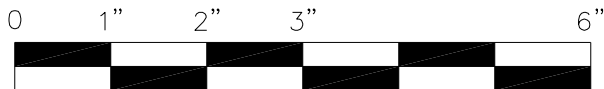
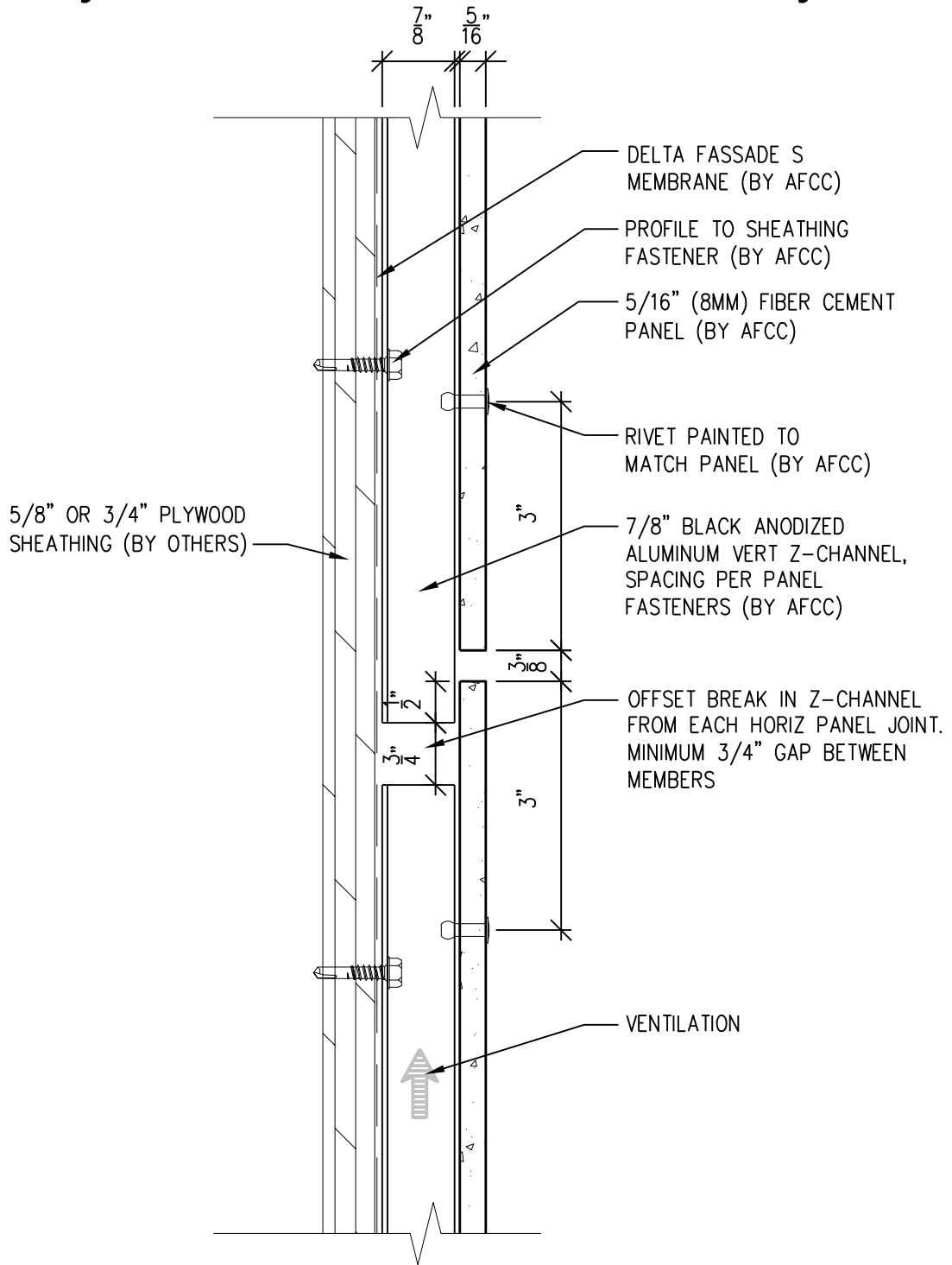
6901 S Pierce St #180, Littleton, CO 80128

Ref.:

Horizontal Joint @
 Continuous Substrate

Date: 11/19/2021

One-Layer Aluminum Attachment System



SCALE: 6"=1'-0"

NOTES:

1. PANEL VERTICAL AND HORIZONTAL JOINT SPACING SHOULD BE 3/8" TYPICAL.



**American Fiber
Cement Corporation**

(303) 972-5107

www.americanfibercement.com

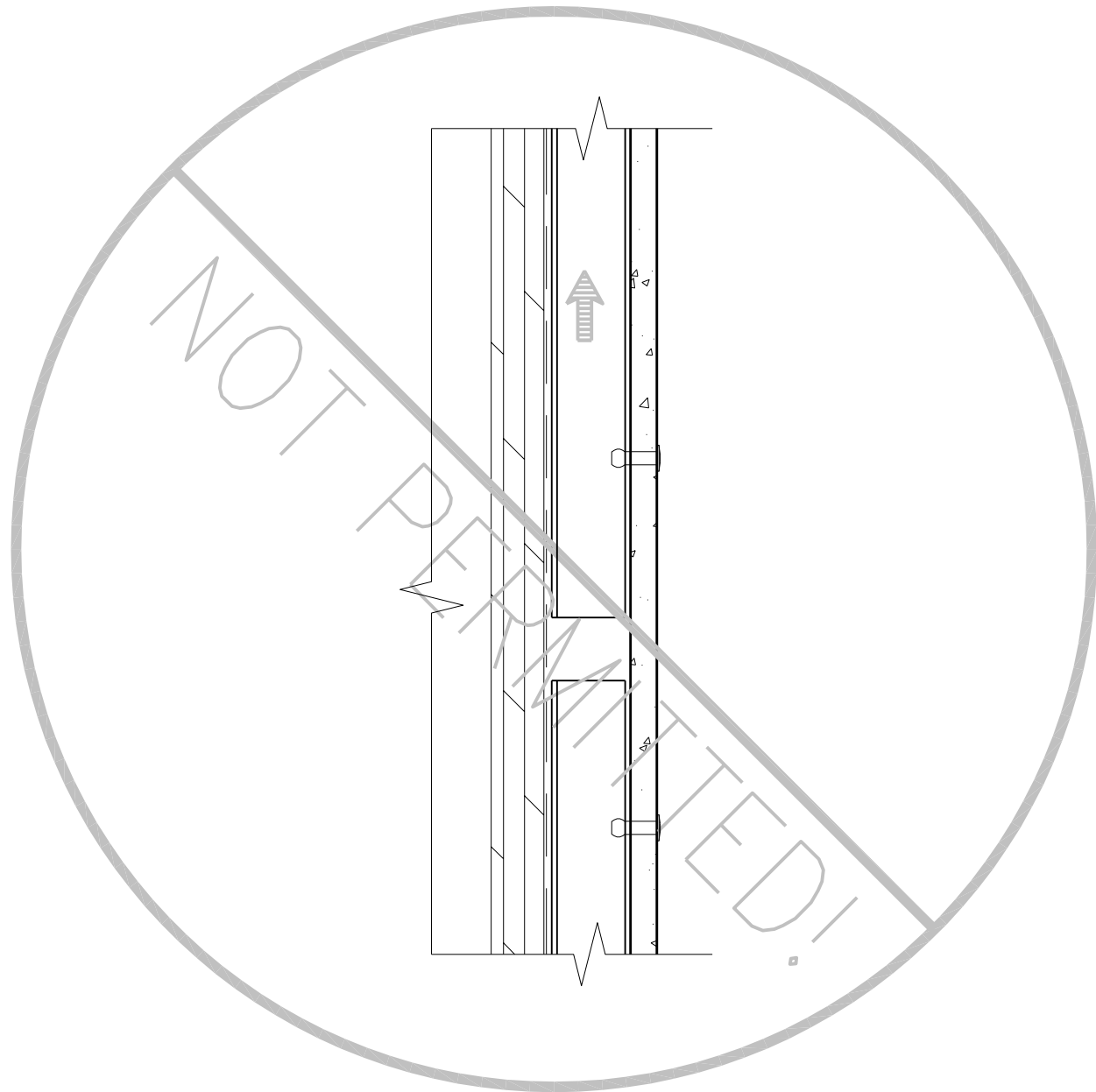
6901 S Pierce St #180, Littleton, CO 80128

Ref.:

**Horizontal Joint @
Break in Substrate**

Date: 11/19/2021

One-Layer Aluminum Attachment System



SCALE: 6"=1'-0"

NOTES:

1. PANEL VERTICAL AND HORIZONTAL JOINT SPACING SHOULD BE 3/8" TYPICAL.



**American Fiber
Cement Corporation** (303) 972-5107
www.americanfibercement.com

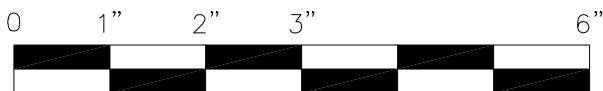
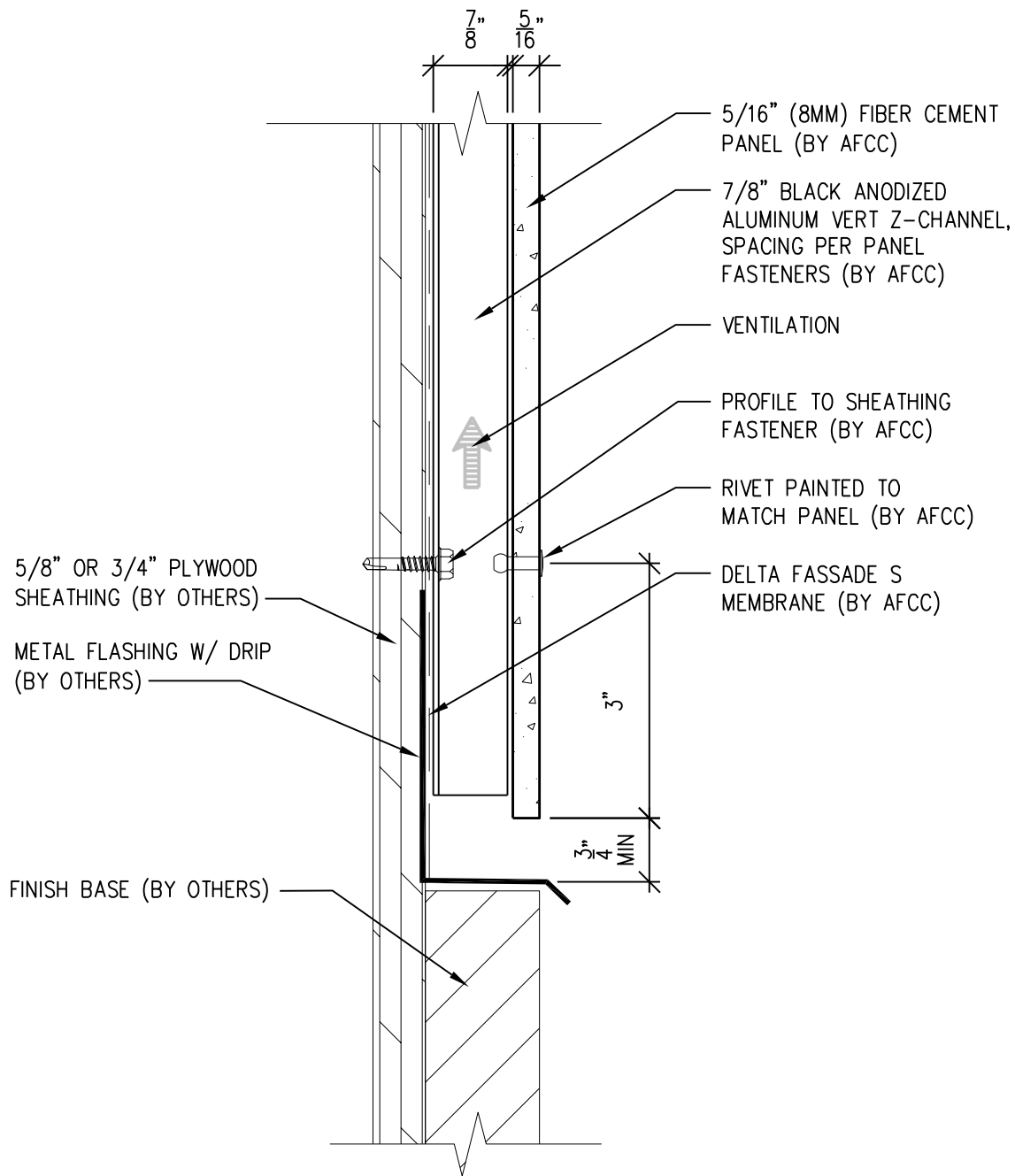
6901 S Pierce St #180, Littleton, CO 80128

Ref.:

**Not Permitted @
Break in Substrate**

Date: 11/19/2021

One-Layer Aluminum Attachment System



SCALE: 6" = 1'-0"

NOTES:

1. PANEL VERTICAL AND HORIZONTAL JOINT SPACING SHOULD BE 3/8" TYPICAL.



**American Fiber
Cement Corporation**

(303) 972-5107

www.americanfibercement.com

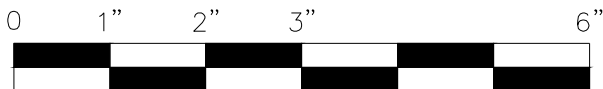
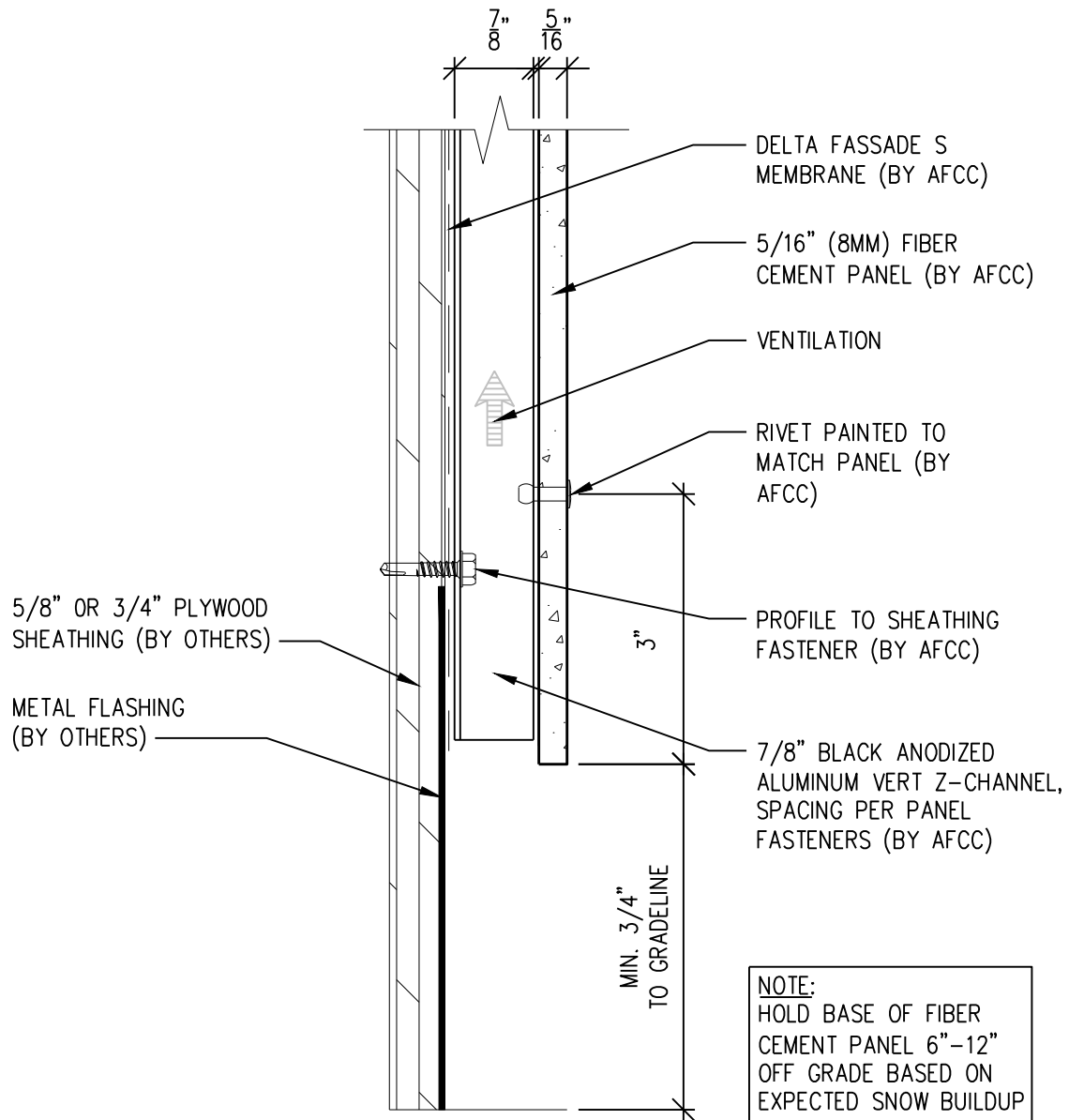
6901 S Pierce St #180, Littleton, CO 80128

Ref.:

Bottom of Panel @
Wall Base

Date: 11/19/2021

One-Layer Aluminum Attachment System



SCALE: 6"=1'-0"

NOTES:

1. PANEL VERTICAL AND HORIZONTAL JOINT SPACING SHOULD BE 3/8" TYPICAL.



**American Fiber
Cement Corporation**

(303) 972-5107

www.americanfibercement.com

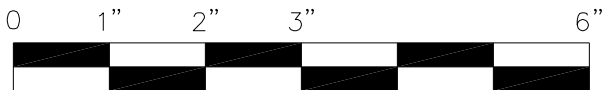
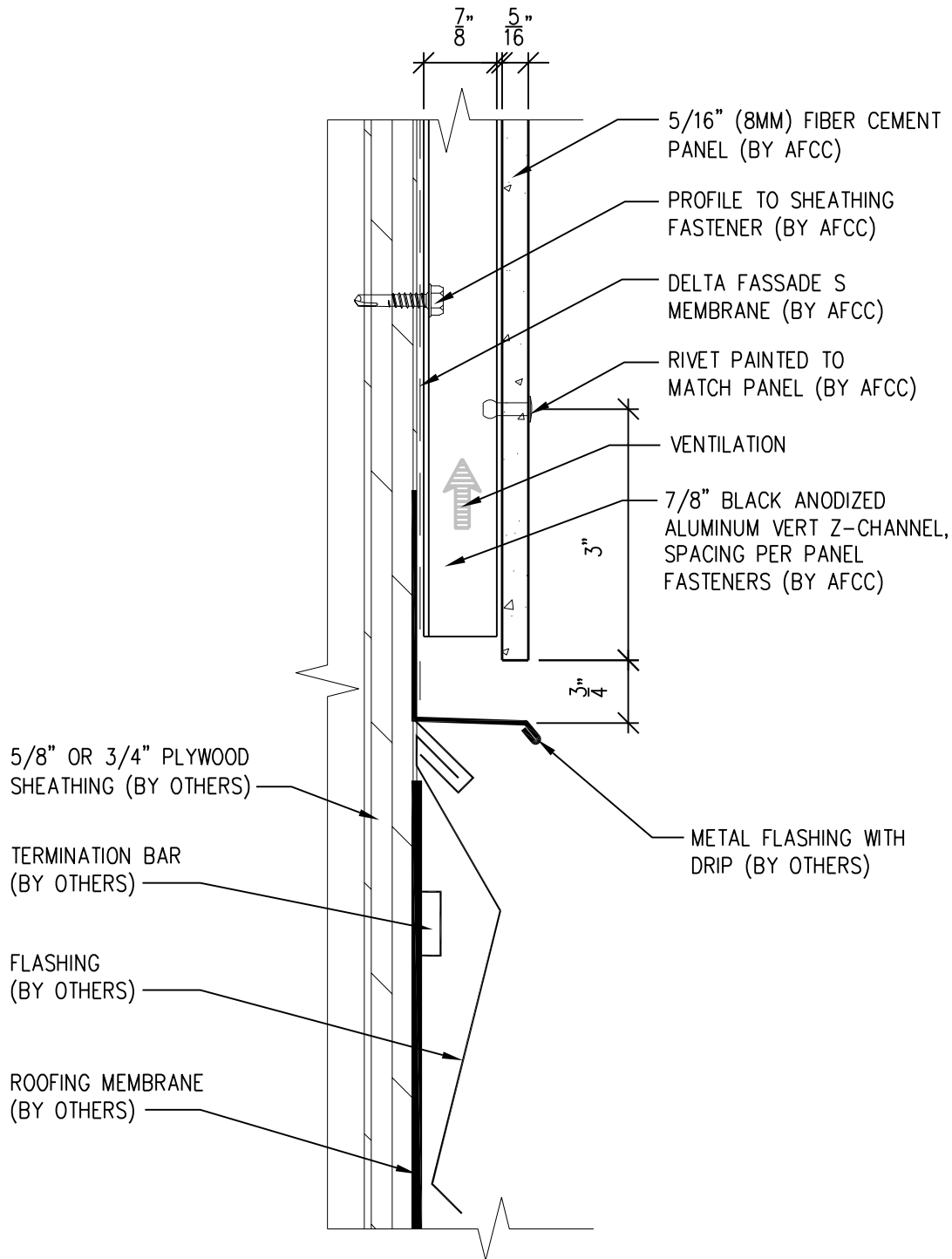
6901 S Pierce St #180, Littleton, CO 80128

Ref.:

Bottom of Panel @
Open Termination

Date: 11/19/2021

One-Layer Aluminum Attachment System



SCALE: 6" = 1'-0"

NOTES:

1. PANEL VERTICAL AND HORIZONTAL JOINT SPACING SHOULD BE 3/8" TYPICAL.



American Fiber Cement Corporation (303) 972-5107
www.americanfibercement.com

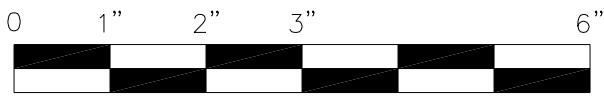
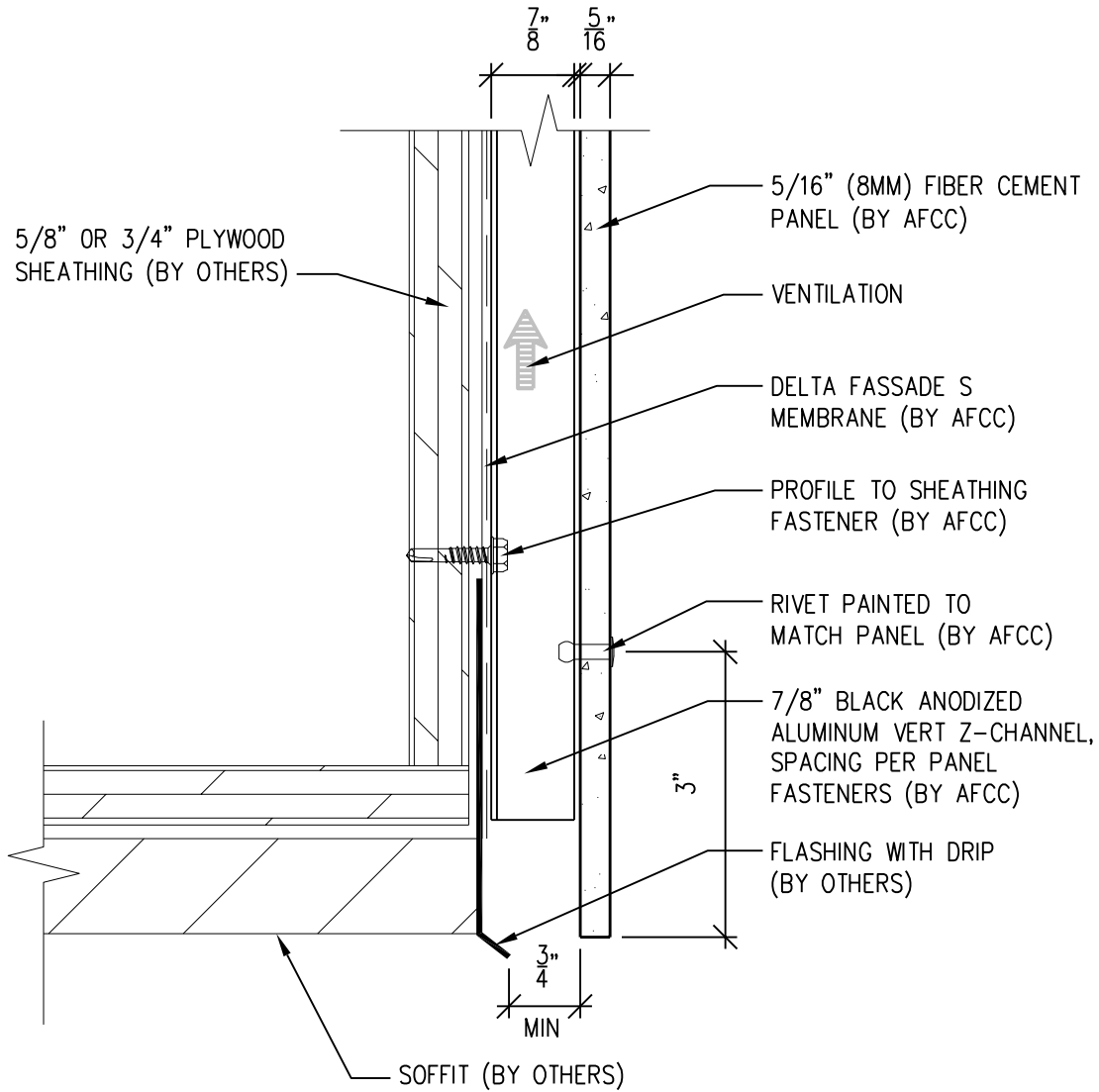
6901 S Pierce St #180, Littleton, CO 80128

Ref.:

Bottom of Panel @
Low Roof Flashing

Date: 11/19/2021

One-Layer Aluminum Attachment System



SCALE: 6" = 1'-0"

NOTES:

1. PANEL VERTICAL AND HORIZONTAL JOINT SPACING SHOULD BE 3/8" TYPICAL.



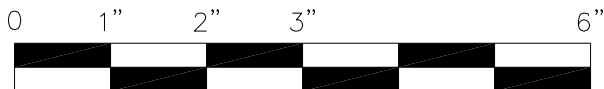
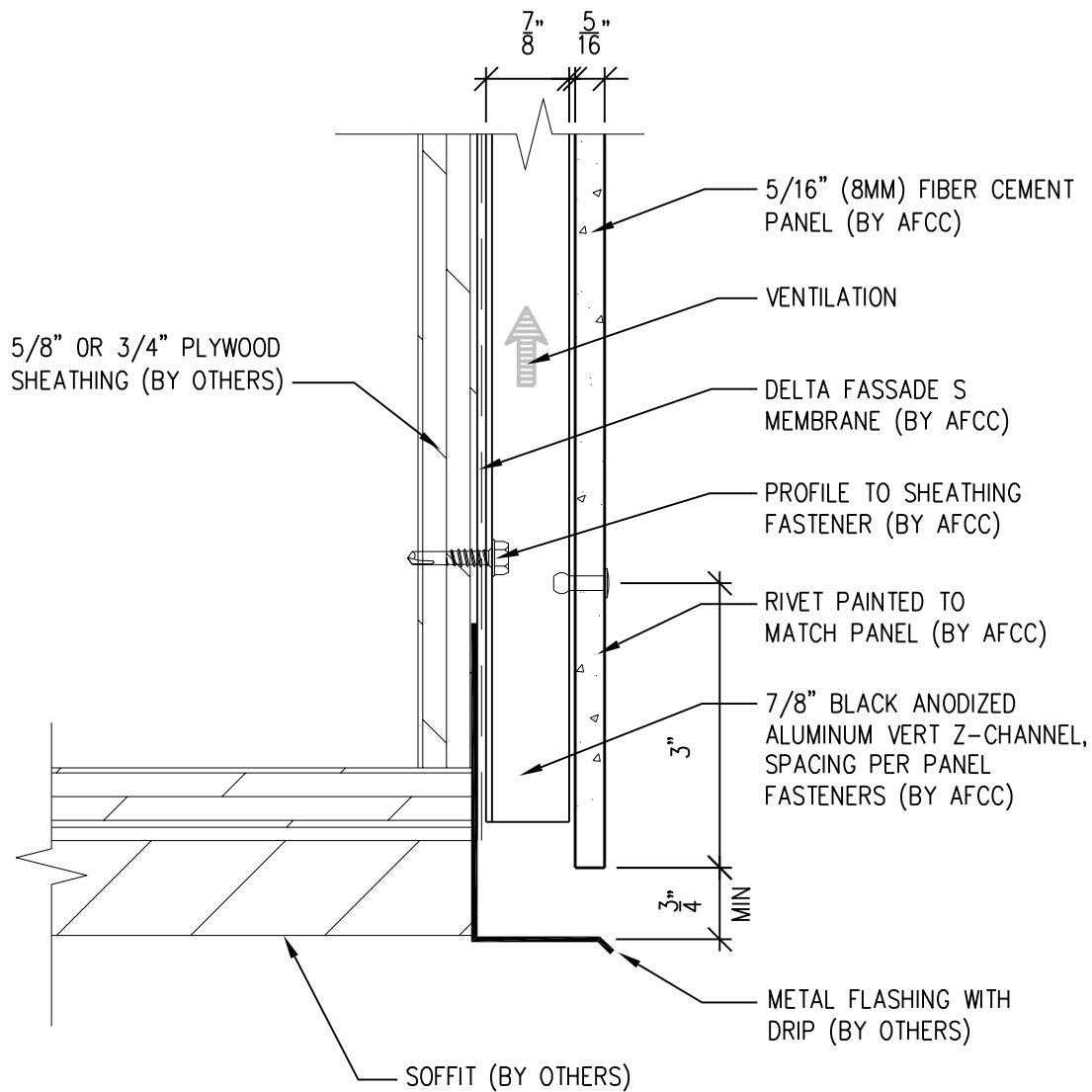
American Fiber Cement Corporation (303) 972-5107
www.americanfibercement.com

6901 S Pierce St #180, Littleton, CO 80128

Ref.:
 Bottom of Panel @
 Soffit

Date: 11/19/2021

One-Layer Aluminum Attachment System



SCALE: 6"=1'-0"

NOTES:

1. PANEL VERTICAL AND HORIZONTAL JOINT SPACING SHOULD BE 3/8" TYPICAL.



American Fiber Cement Corporation www.americanfibercement.com

(303) 972-5107

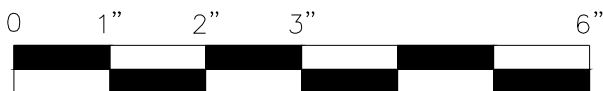
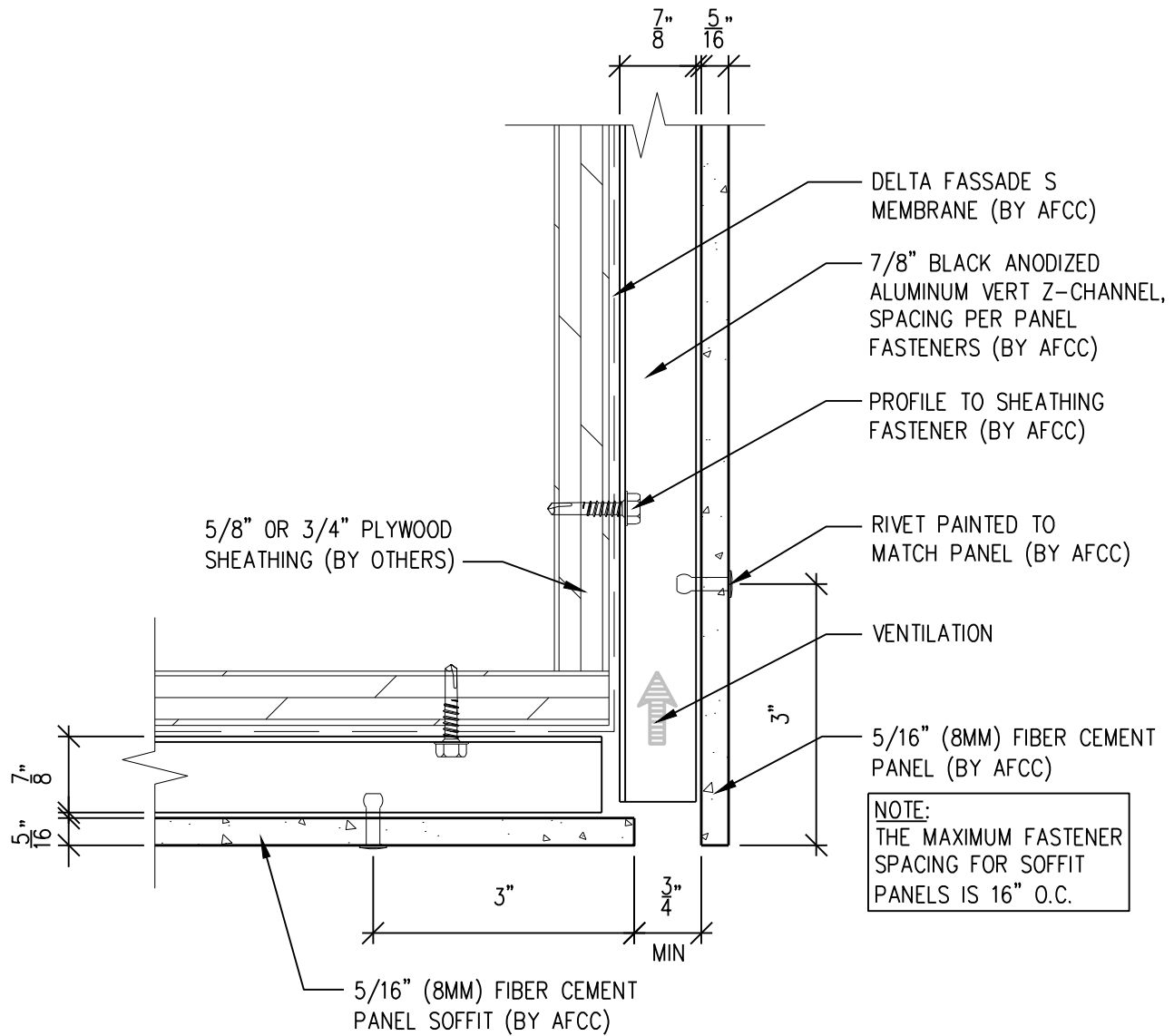
6901 S Pierce St #180, Littleton, CO 80128

Ref.:

Bottom of Panel @
Soffit (Alternate)

Date: 11/19/2021

One-Layer Aluminum Attachment System



SCALE: 6"=1'-0"

NOTES:

1. PANEL VERTICAL AND HORIZONTAL JOINT SPACING SHOULD BE 3/8" TYPICAL.



**American Fiber
Cement Corporation**

(303) 972-5107

www.americanfibercement.com

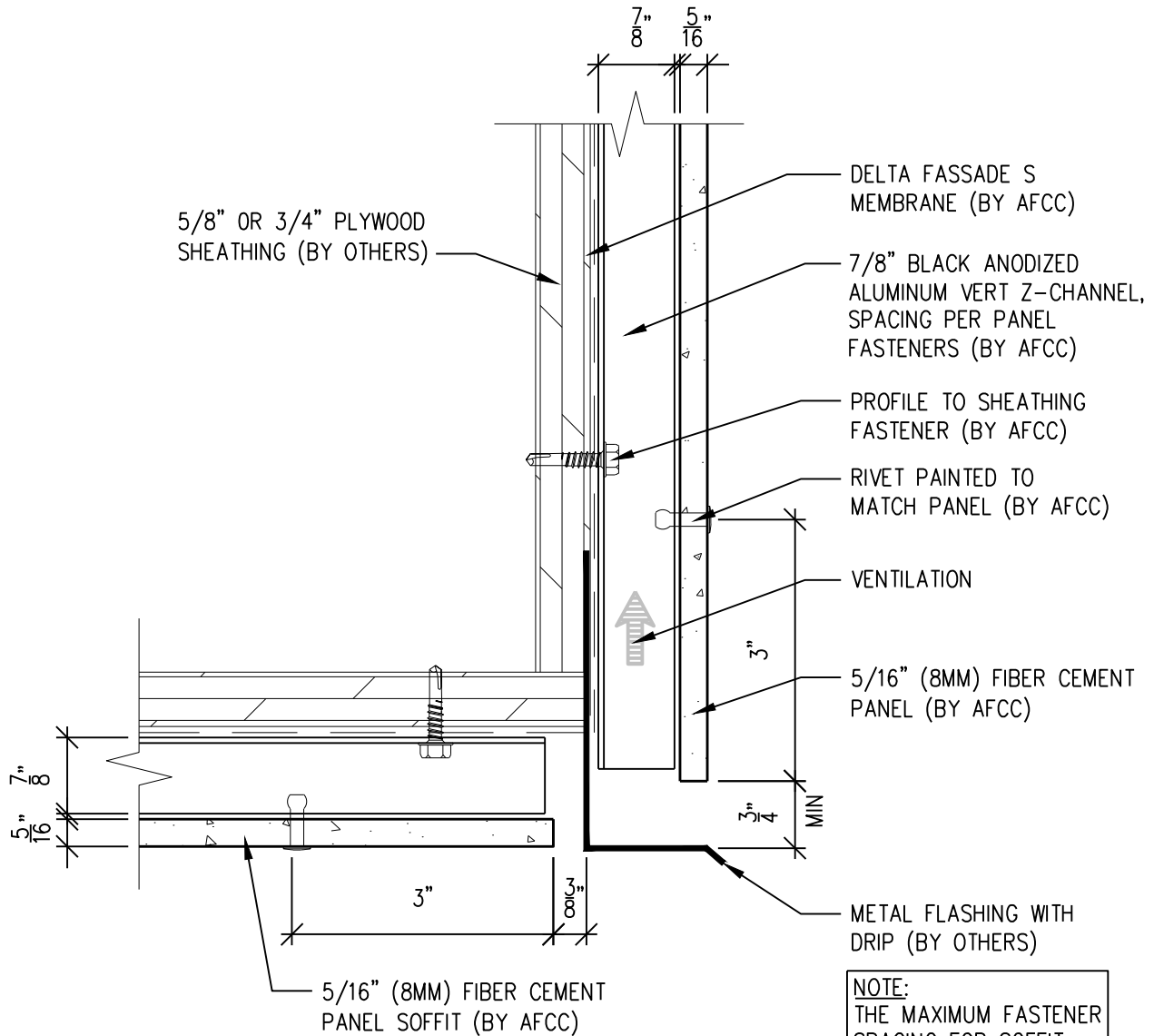
6901 S Pierce St #180, Littleton, CO 80128

Ref.:

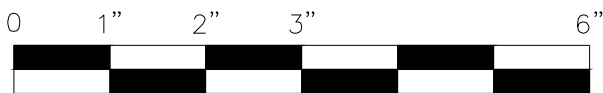
Bottom of Panel @
F.C.P. Soffit

Date: 11/19/2021

One-Layer Aluminum Attachment System



NOTE:
THE MAXIMUM FASTENER SPACING FOR SOFFIT PANELS IS 16" O.C.



SCALE: 6"=1'-0"

NOTES:

1. PANEL VERTICAL AND HORIZONTAL JOINT SPACING SHOULD BE 3/8" TYPICAL.



**American Fiber
Cement Corporation**

(303) 972-5107

www.americanfibercement.com

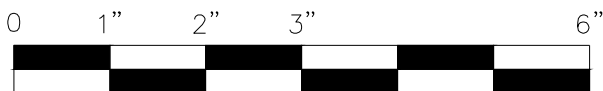
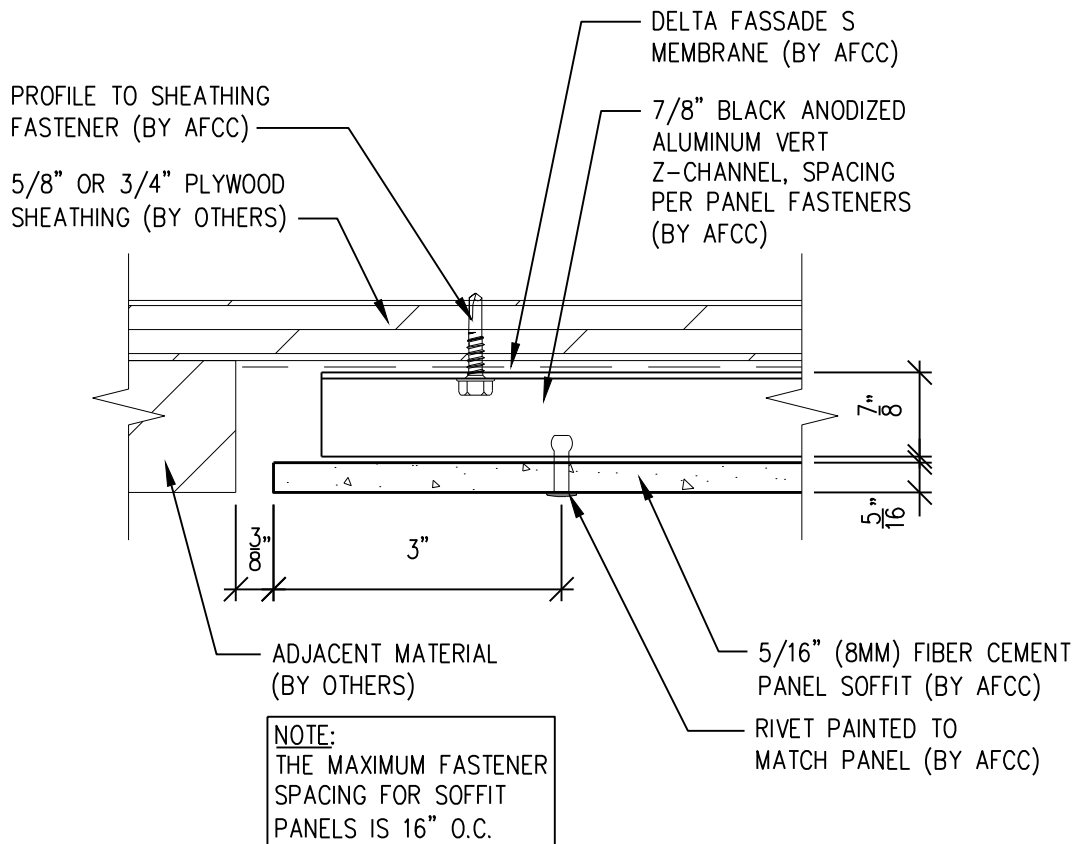
6901 S Pierce St #180, Littleton, CO 80128

Ref.:

Bottom of Panel @
F.C.P. Soffit (Alternate)

Date: 11/19/2021

One-Layer Aluminum Attachment System



SCALE: 6"=1'-0"

NOTES:

1. PANEL VERTICAL AND HORIZONTAL JOINT SPACING SHOULD BE 3/8" TYPICAL.



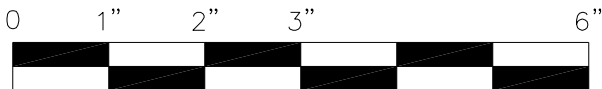
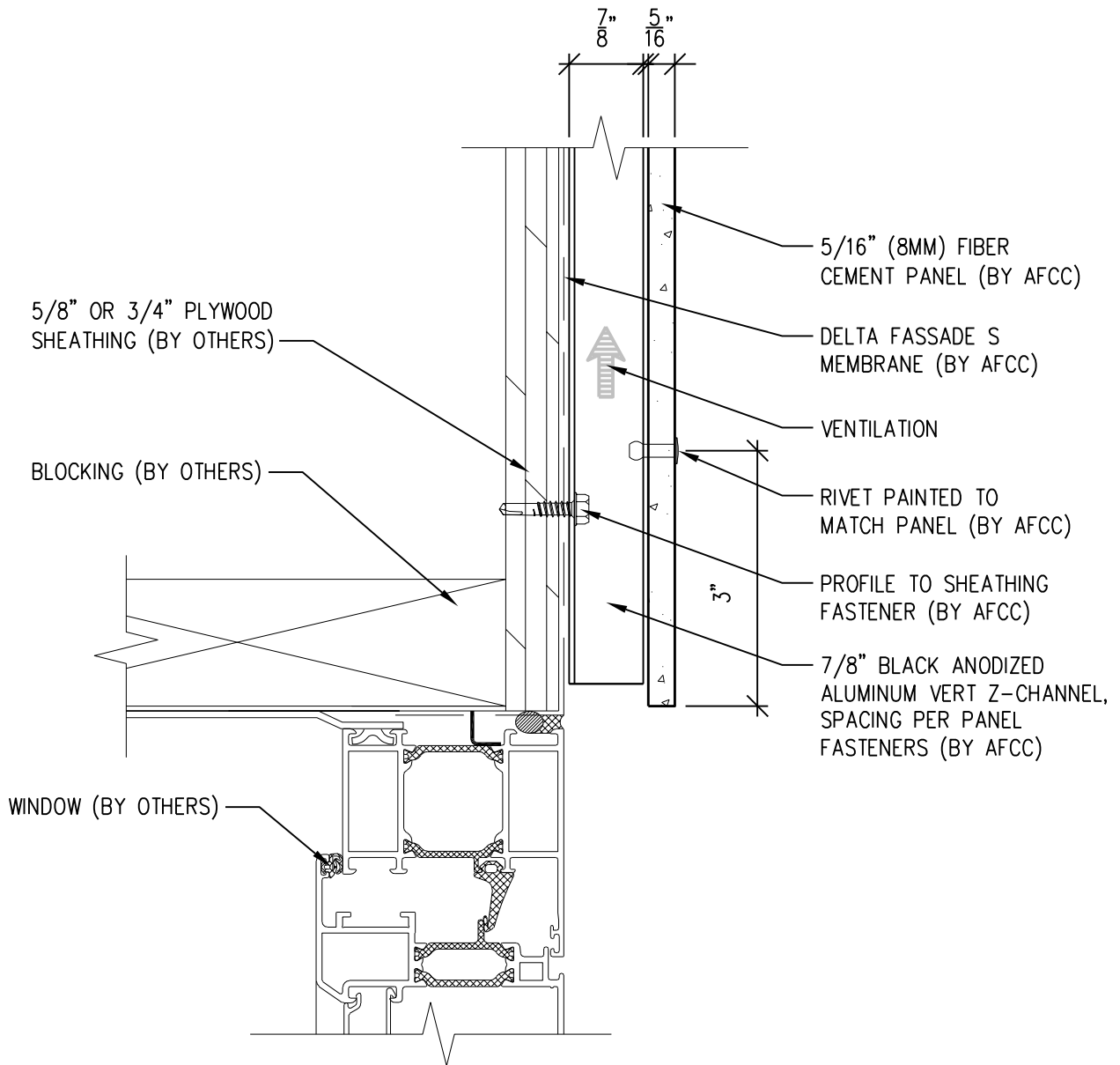
American Fiber Cement Corporation (303) 972-5107
www.americanfibercement.com

6901 S Pierce St #180, Littleton, CO 80128

Ref.: Soffit Termination @ Adjacent Material

Date: 11/19/2021

One-Layer Aluminum Attachment System



SCALE: 6"=1'-0"

NOTES:

1. PANEL VERTICAL AND HORIZONTAL JOINT SPACING SHOULD BE 3/8" TYPICAL.



**American Fiber
Cement Corporation**

(303) 972-5107

www.americanfibercement.com

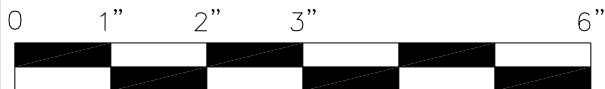
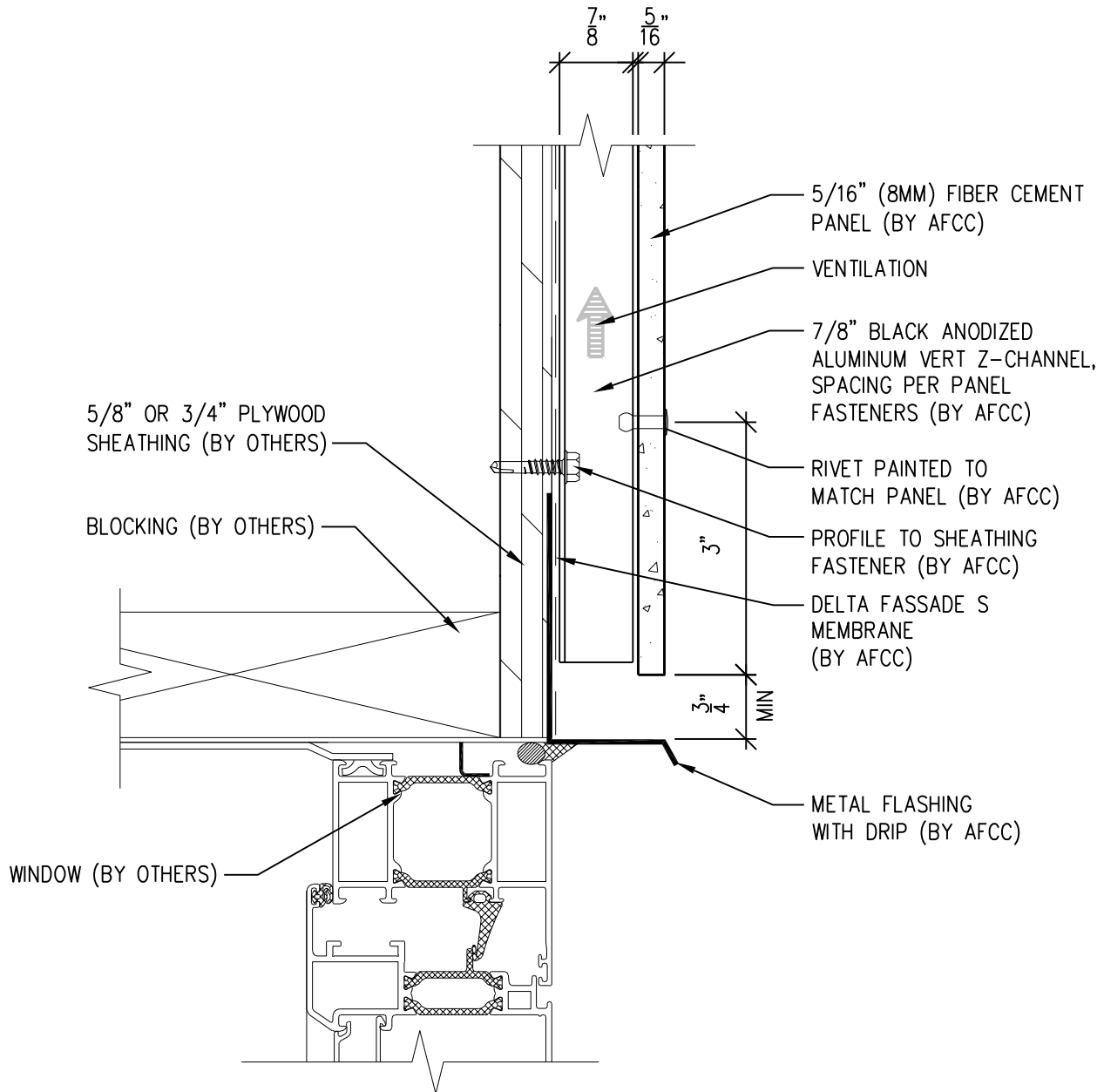
6901 S Pierce St #180, Littleton, CO 80128

Ref.:

Bottom of Panel @
Window Head

Date: 11/19/2021

One-Layer Aluminum Attachment System



SCALE: 6"=1'-0"

NOTES:

1. PANEL VERTICAL AND HORIZONTAL JOINT SPACING SHOULD BE 3/8" TYPICAL.



**American Fiber
Cement Corporation**

(303) 972-5107

www.americanfibercement.com

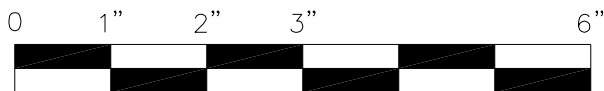
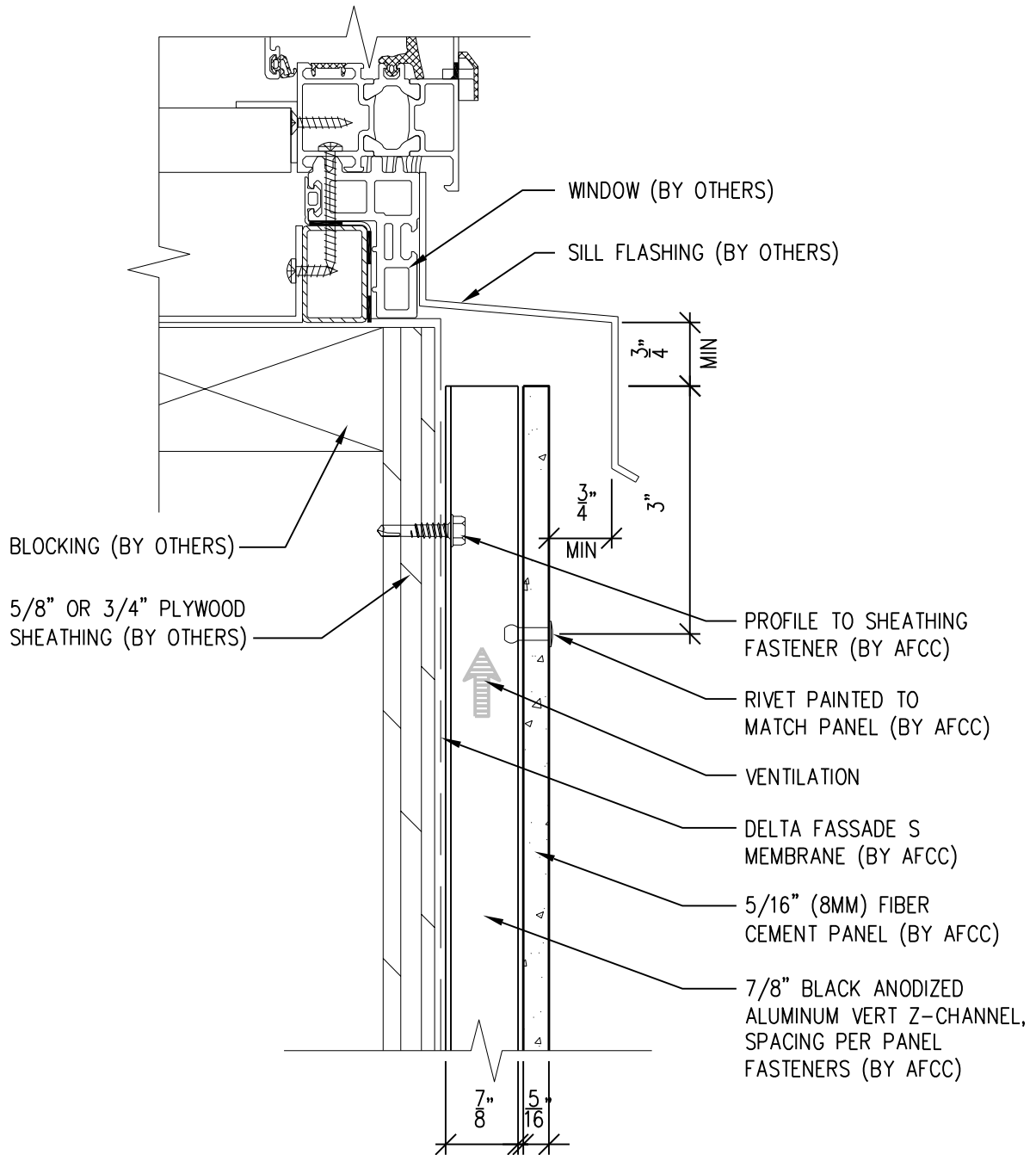
6901 S Pierce St #180, Littleton, CO 80128

Ref.:

Bottom of Panel @
Window Head (Alternate)

Date: 11/19/2021

One-Layer Aluminum Attachment System



SCALE: 6"=1'-0"

NOTES:

1. PANEL VERTICAL AND HORIZONTAL JOINT SPACING SHOULD BE 3/8" TYPICAL.



**American Fiber
Cement Corporation**

(303) 972-5107

www.americanfibercement.com

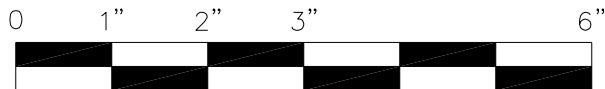
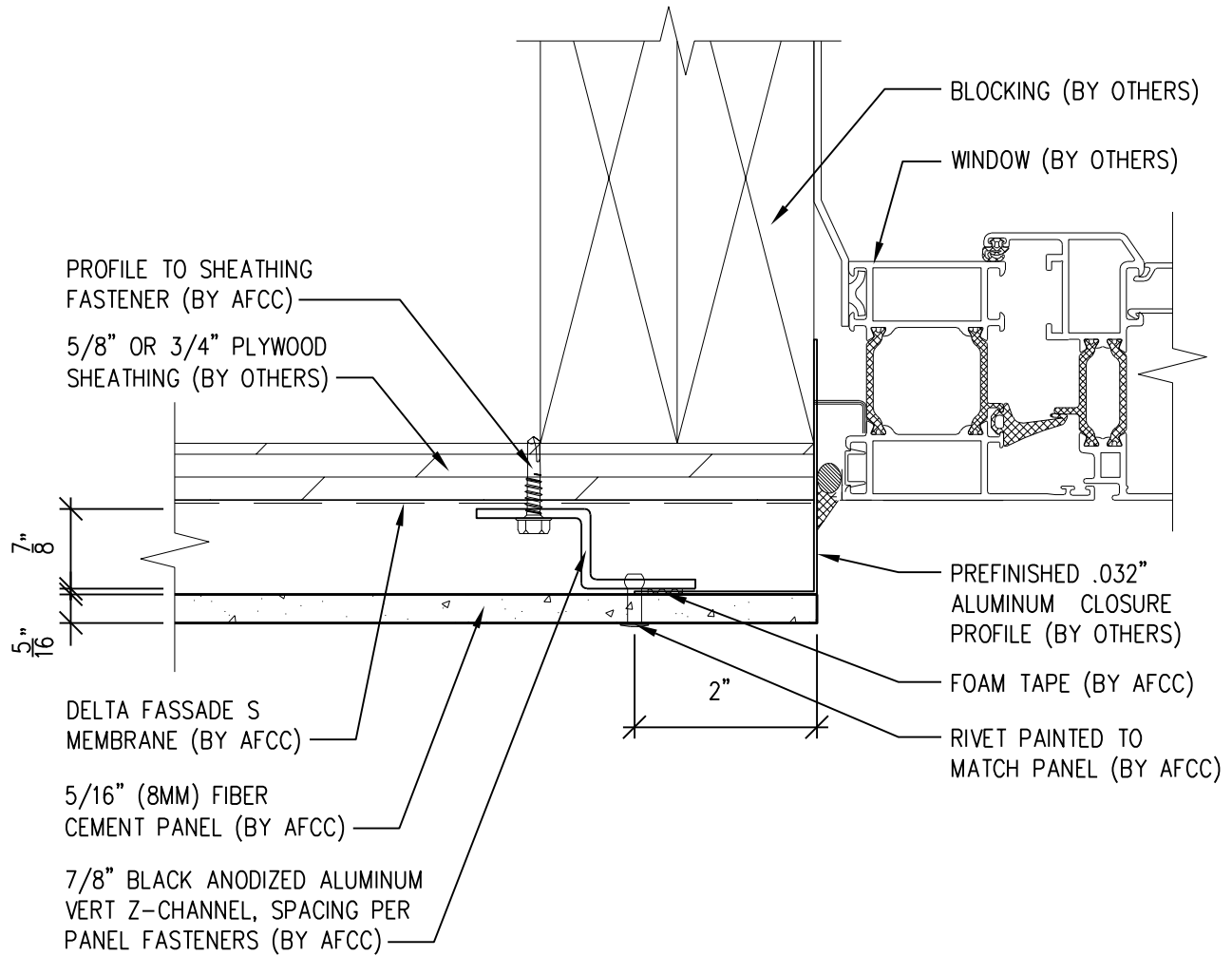
6901 S Pierce St #180, Littleton, CO 80128

Ref.:

Top of Panel @
Window Sill

Date: 11/19/2021

One-Layer Aluminum Attachment System



SCALE: 6"=1'-0"

NOTES:

1. PANEL VERTICAL AND HORIZONTAL JOINT SPACING SHOULD BE 3/8" TYPICAL.



**American Fiber
Cement Corporation**

(303) 972-5107

www.americanfibercement.com

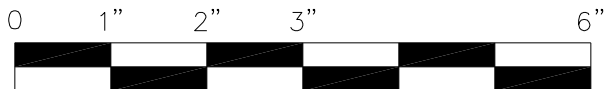
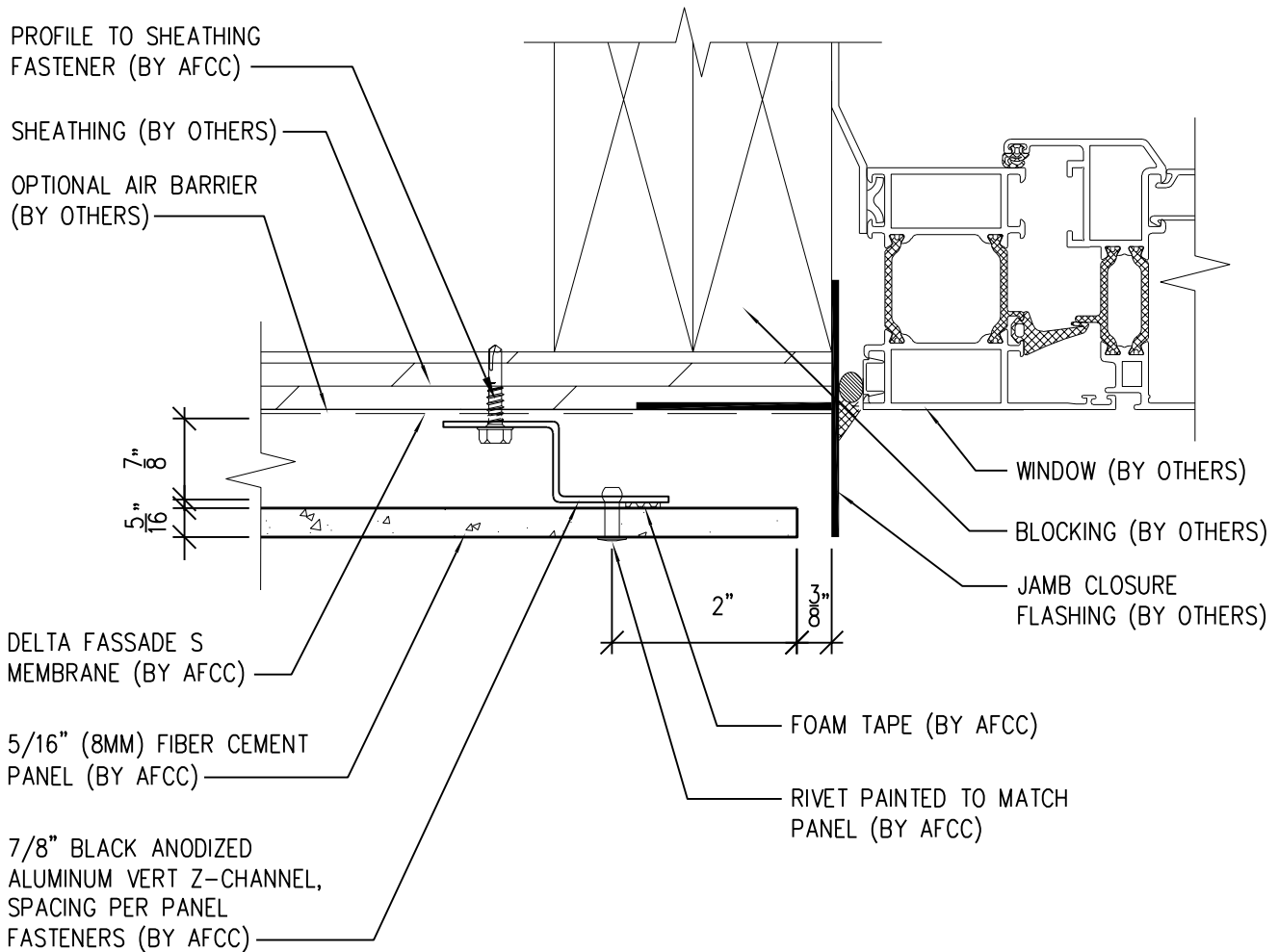
6901 S Pierce St #180, Littleton, CO 80128

Ref.:

Panel Edge @
Window Jamb

Date: 11/19/2021

One-Layer Aluminum Attachment System



SCALE: 6"=1'-0"

NOTES:

1. PANEL VERTICAL AND HORIZONTAL JOINT SPACING SHOULD BE 3/8" TYPICAL.



American Fiber Cement Corporation www.americanfibercement.com

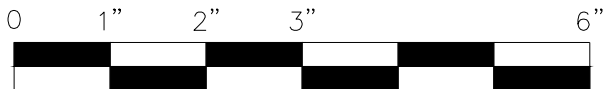
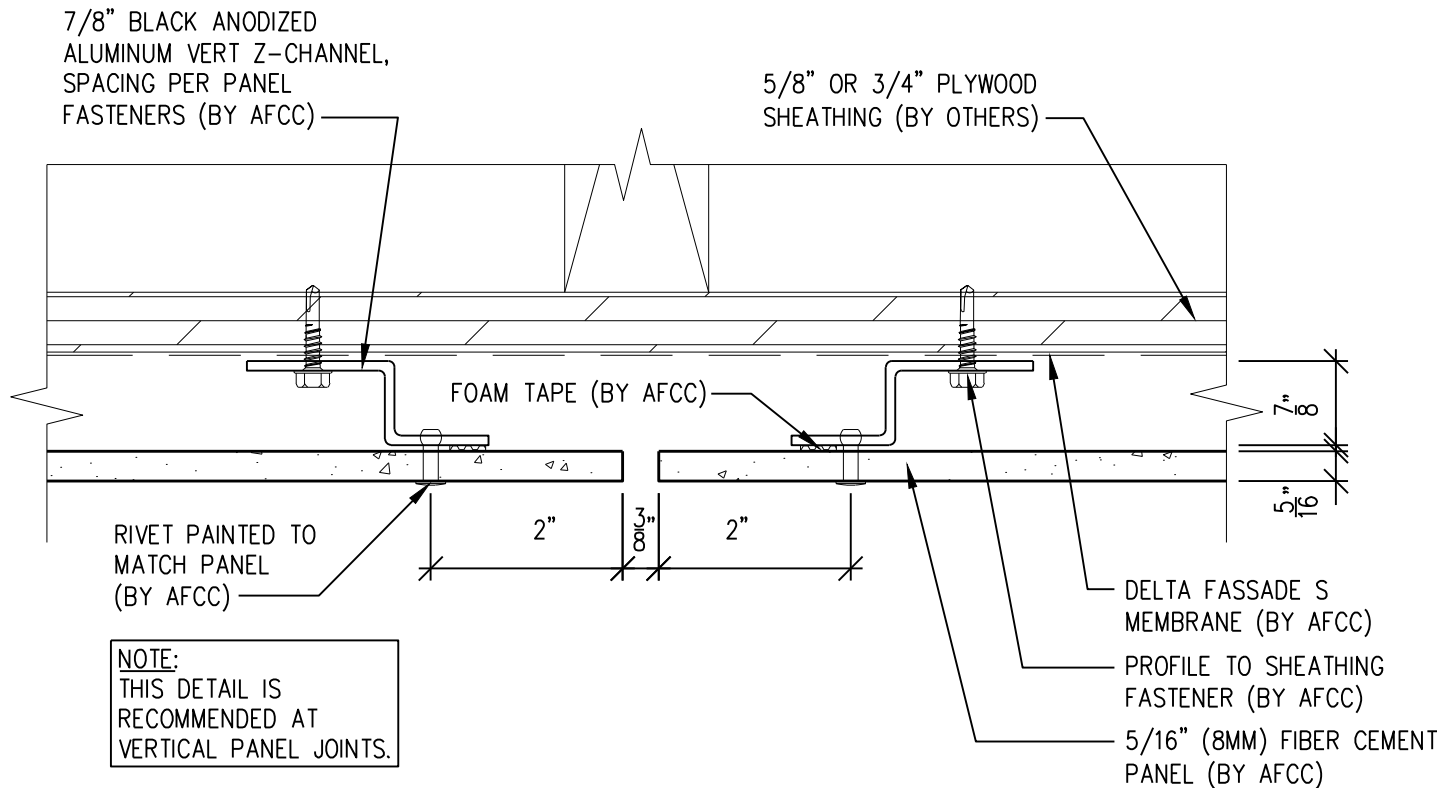
(303) 972-5107

6901 S Pierce St #180, Littleton, CO 80128

Ref.:
Panel Edge @
Window Jamb (Alternate)

Date: 11/19/2021

One-Layer Aluminum Attachment System



SCALE: 6"=1'-0"

NOTES:

1. PANEL VERTICAL AND HORIZONTAL JOINT SPACING SHOULD BE 3/8" TYPICAL.



American Fiber Cement Corporation (303) 972-5107
www.americanfibercement.com

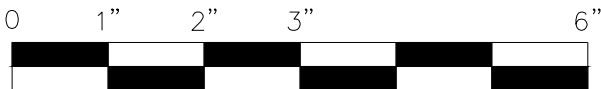
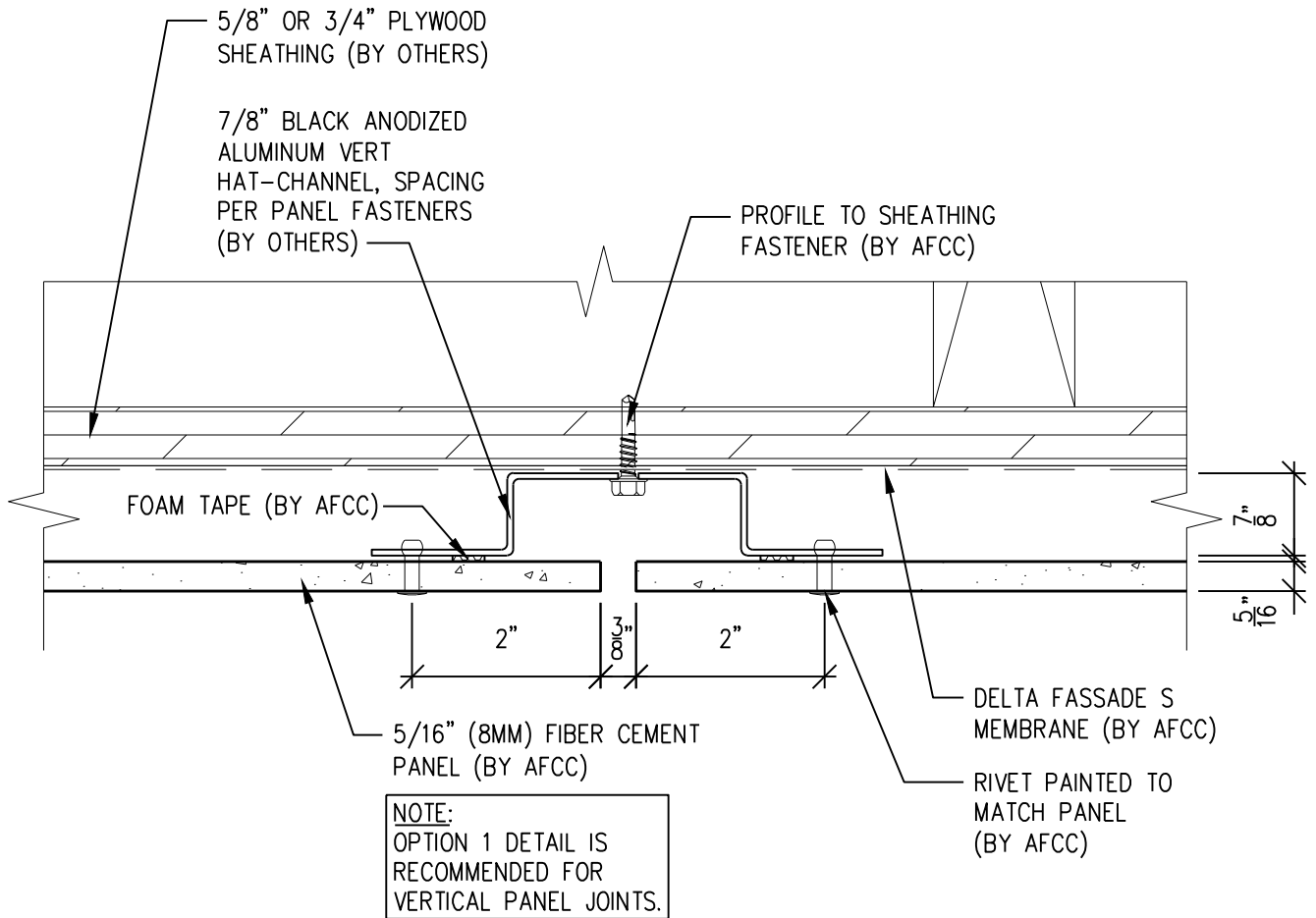
6901 S Pierce St #180, Littleton, CO 80128

Ref.:

Vertical Panel Joint
Option 1

Date: 11/19/2021

One-Layer Aluminum Attachment System



SCALE: 6"=1'-0"

NOTES:

1. PANEL VERTICAL AND HORIZONTAL JOINT SPACING SHOULD BE 3/8" TYPICAL.



**American Fiber
Cement Corporation**

(303) 972-5107

www.americanfibercement.com

6901 S Pierce St #180, Littleton, CO 80128

Ref.:

Vertical Panel Joint
Option 2

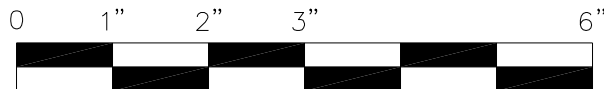
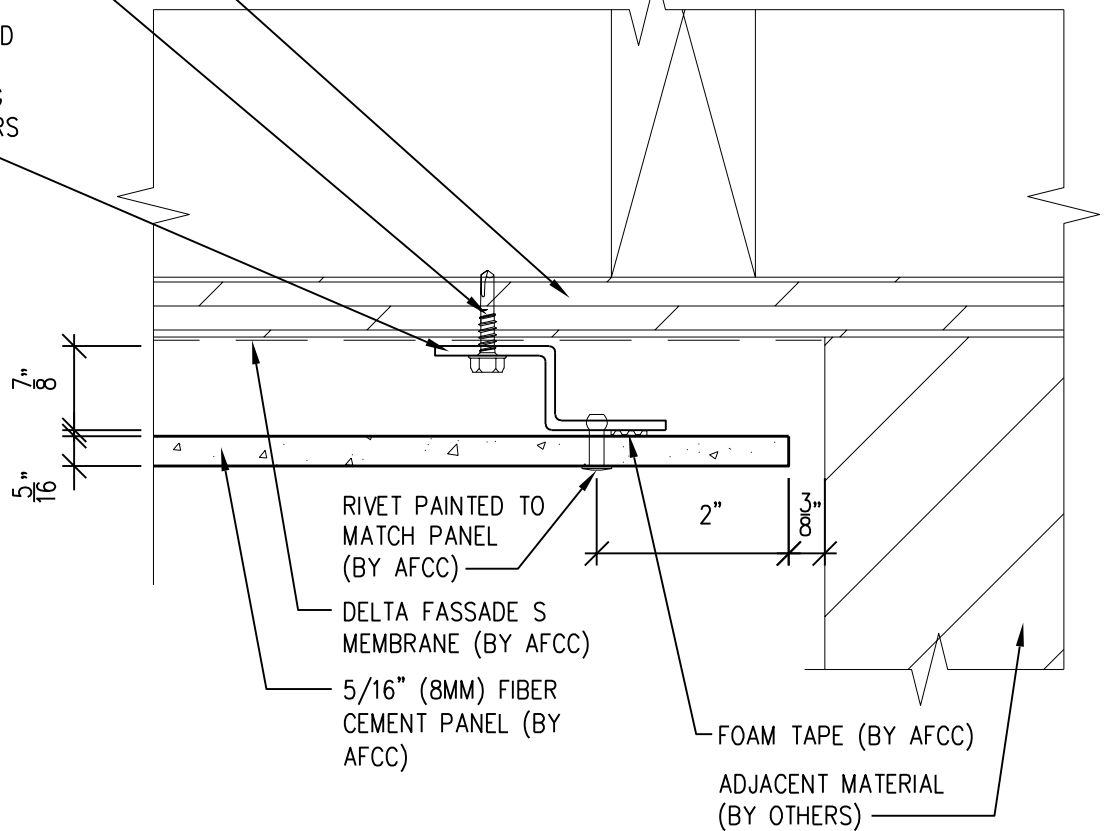
Date: 11/19/2021

One-Layer Aluminum Attachment System

5/8" OR 3/4" PLYWOOD
SHEATHING (BY OTHERS)

PROFILE TO SHEATHING
FASTENER (BY AFCC)

7/8" BLACK ANODIZED
ALUMINUM VERT
Z-CHANNEL, SPACING
PER PANEL FASTENERS
(BY AFCC)



SCALE: 6"=1'-0"

NOTES:

1. PANEL VERTICAL AND HORIZONTAL JOINT SPACING SHOULD BE 3/8" TYPICAL.



**American Fiber
Cement Corporation**

(303) 972-5107

www.americanfibercement.com

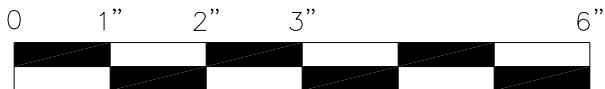
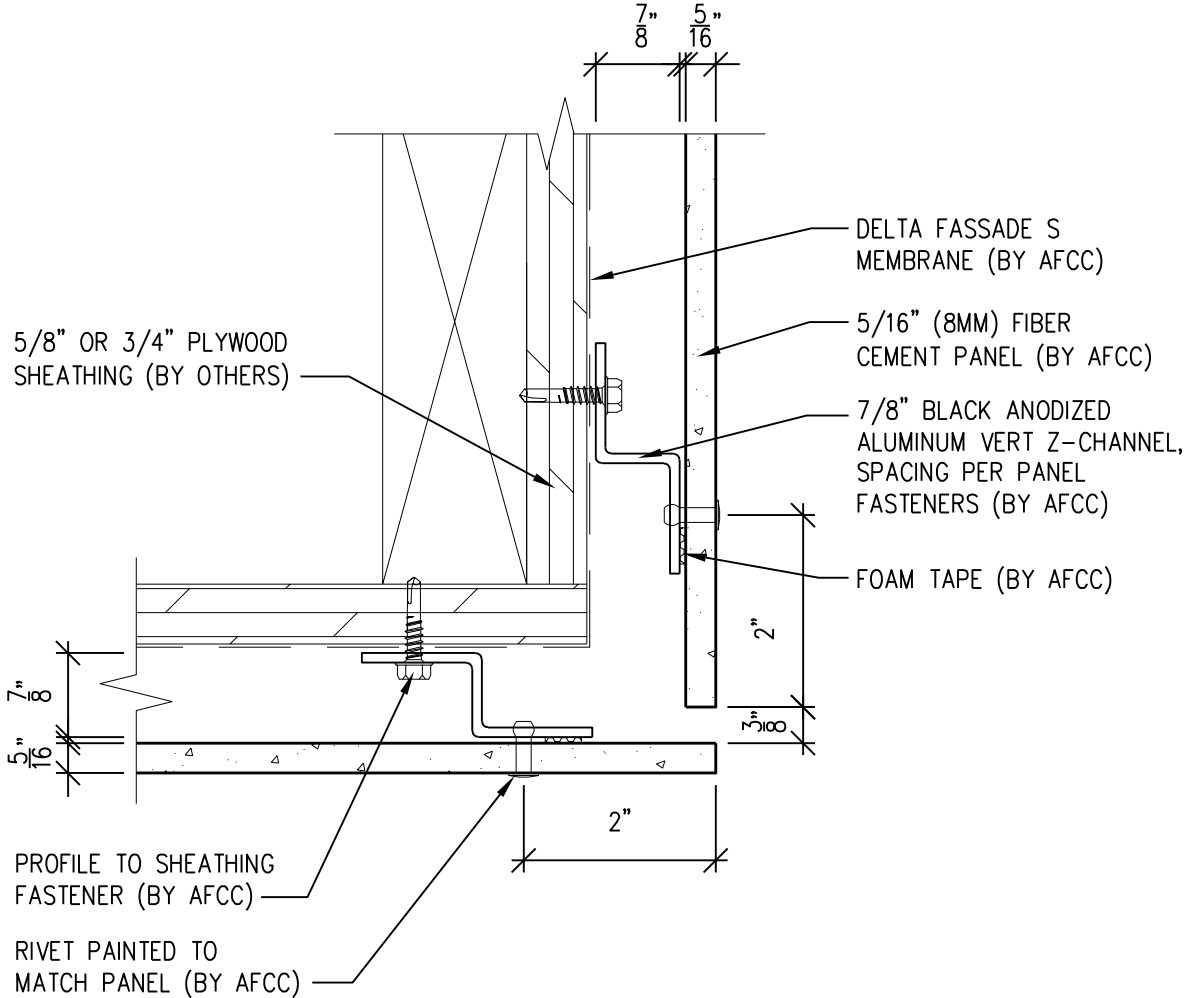
6901 S Pierce St #180, Littleton, CO 80128

Ref.:

**Panel Edge @
Butt Joint**

Date: 11/19/2021

One-Layer Aluminum Attachment System



SCALE: 6" = 1'-0"

NOTES:

1. PANEL VERTICAL AND HORIZONTAL JOINT SPACING SHOULD BE 3/8" TYPICAL.



**American Fiber
Cement Corporation**

(303) 972-5107

www.americanfibercement.com

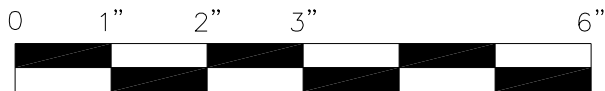
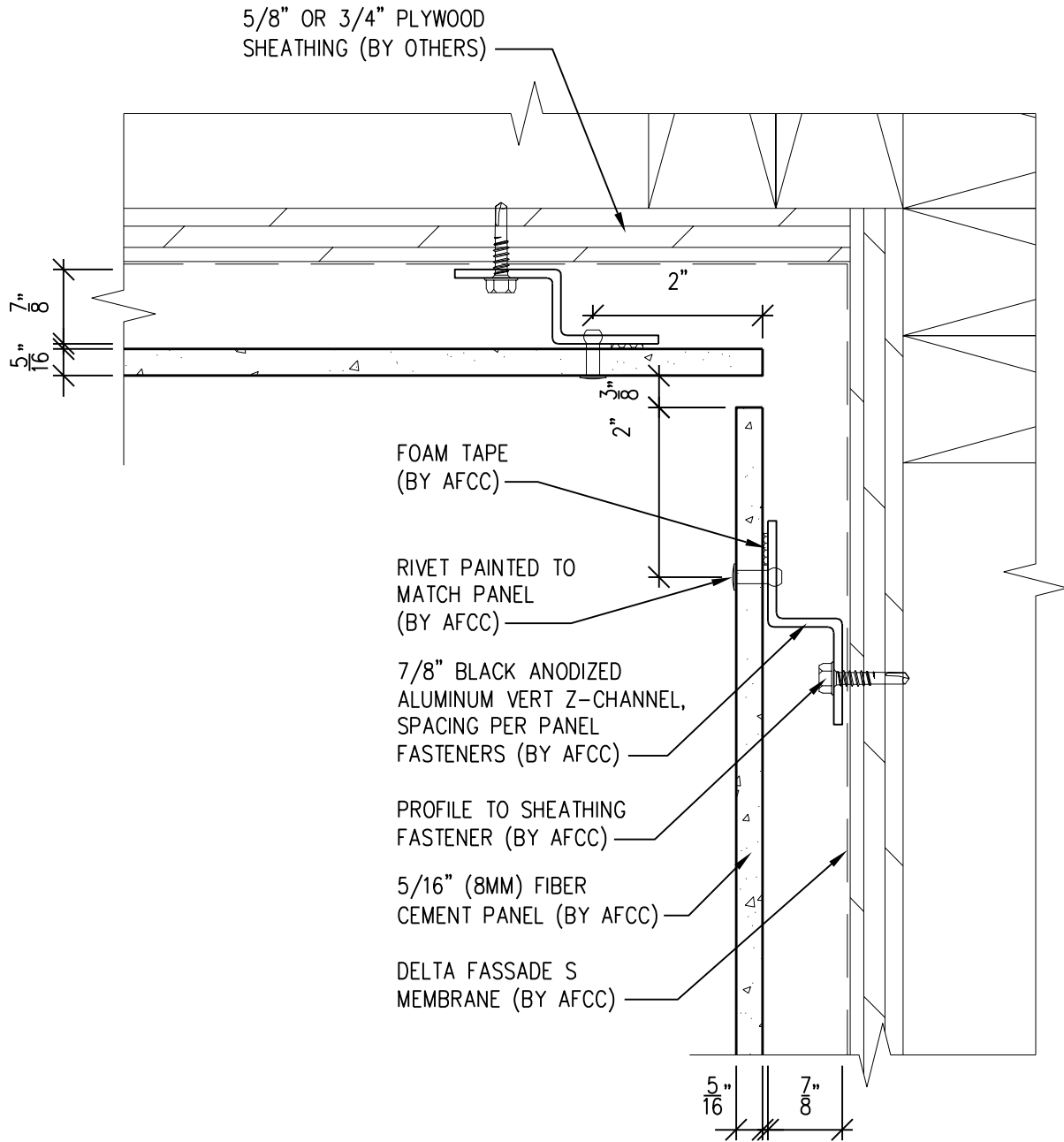
Ref.:

**Panels @
Outside Corner**

Date: 11/19/2021

6901 S Pierce St #180, Littleton, CO 80128

One-Layer Aluminum Attachment System



SCALE: 6"=1'-0"

NOTES:

1. PANEL VERTICAL AND HORIZONTAL JOINT SPACING SHOULD BE 3/8" TYPICAL.



**American Fiber
Cement Corporation**

(303) 972-5107

www.americanfibercement.com

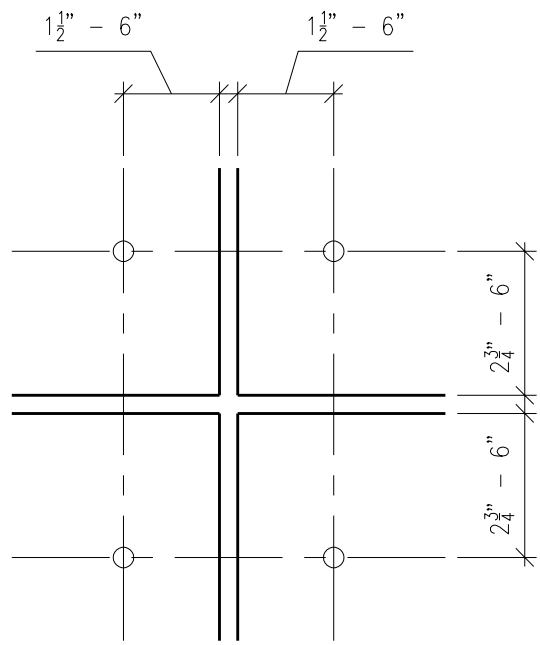
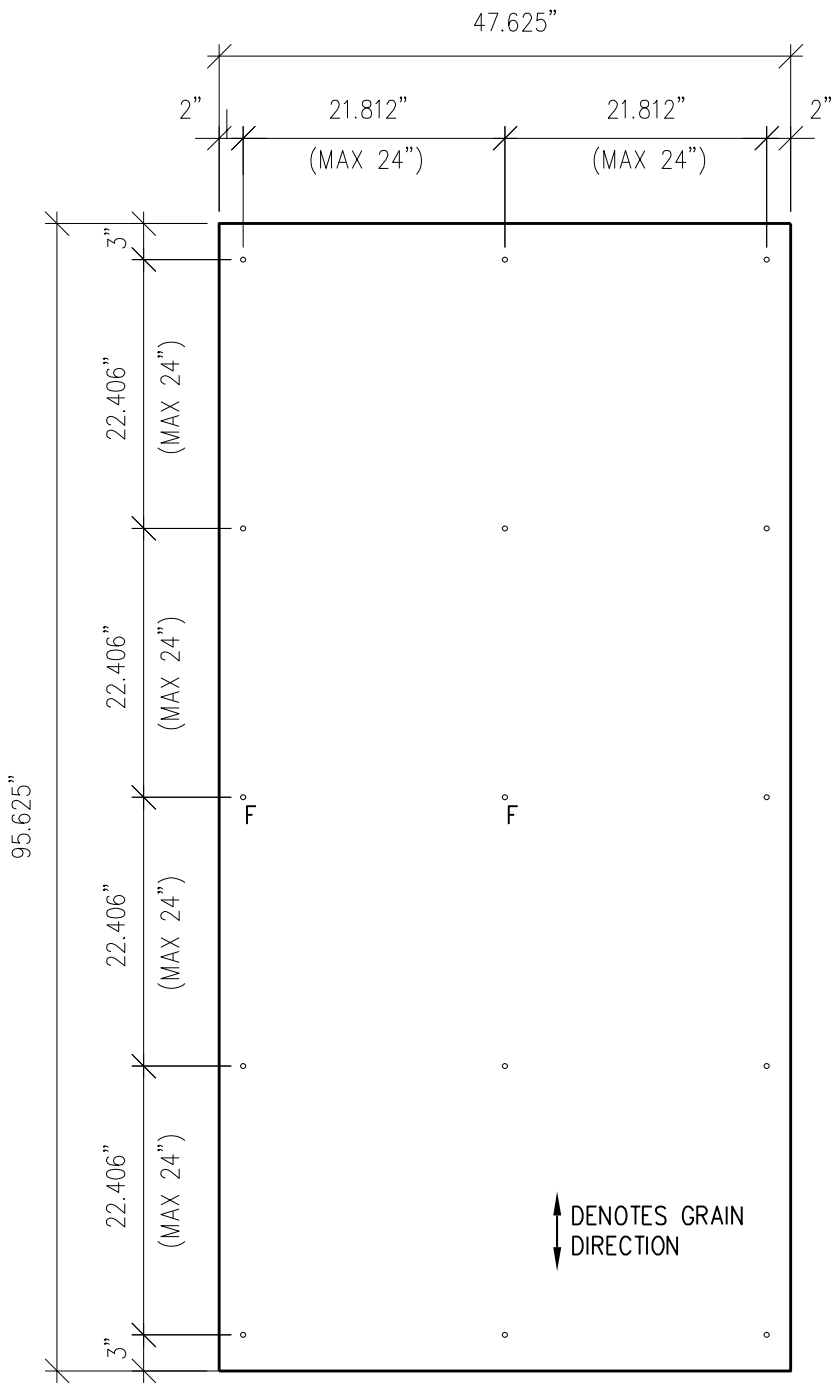
6901 S Pierce St #180, Littleton, CO 80128

Ref.:

**Panels @
Inside Corner**

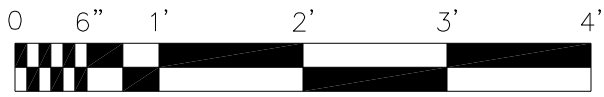
Date: 11/19/2021

One-Layer Aluminum Attachment System



TYP PANEL EDGE FASTENER
3"=1'-0"

DRILLING KEY:
F = FIXED POINT 21/64"
UNMARKED HOLE = GLIDING POINT 7/16"



SCALE: 3/4"=1'-0"

NOTES:

1. PANEL VERTICAL AND HORIZONTAL JOINT SPACING SHOULD BE 3/8" TYPICAL.



American Fiber Cement Corporation (303) 972-5107
www.americanfibercement.com

6901 S Pierce St #180, Littleton, CO 80128

Ref.:
Typical
Fastener Layout

Date: 11/19/2021