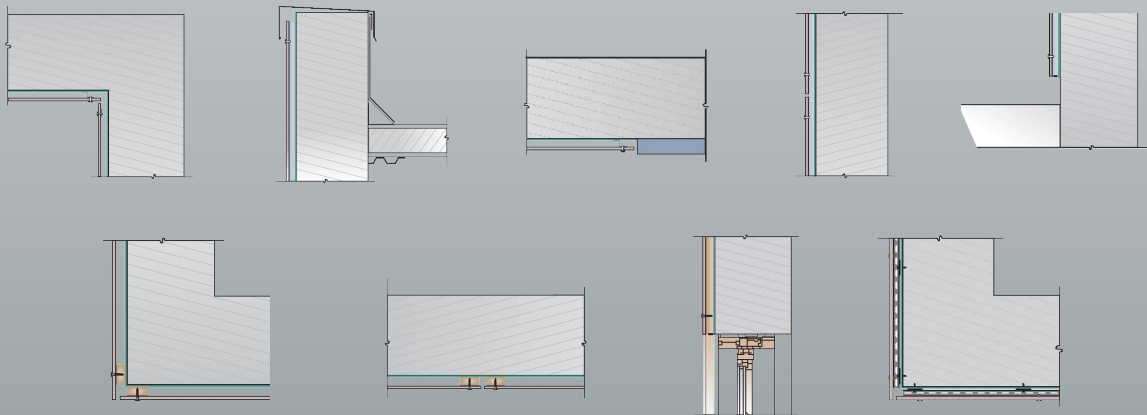


## One Layer Steel Attachment System with Adhesive



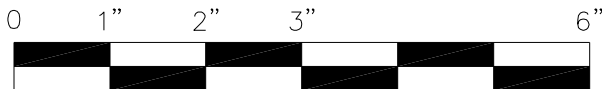
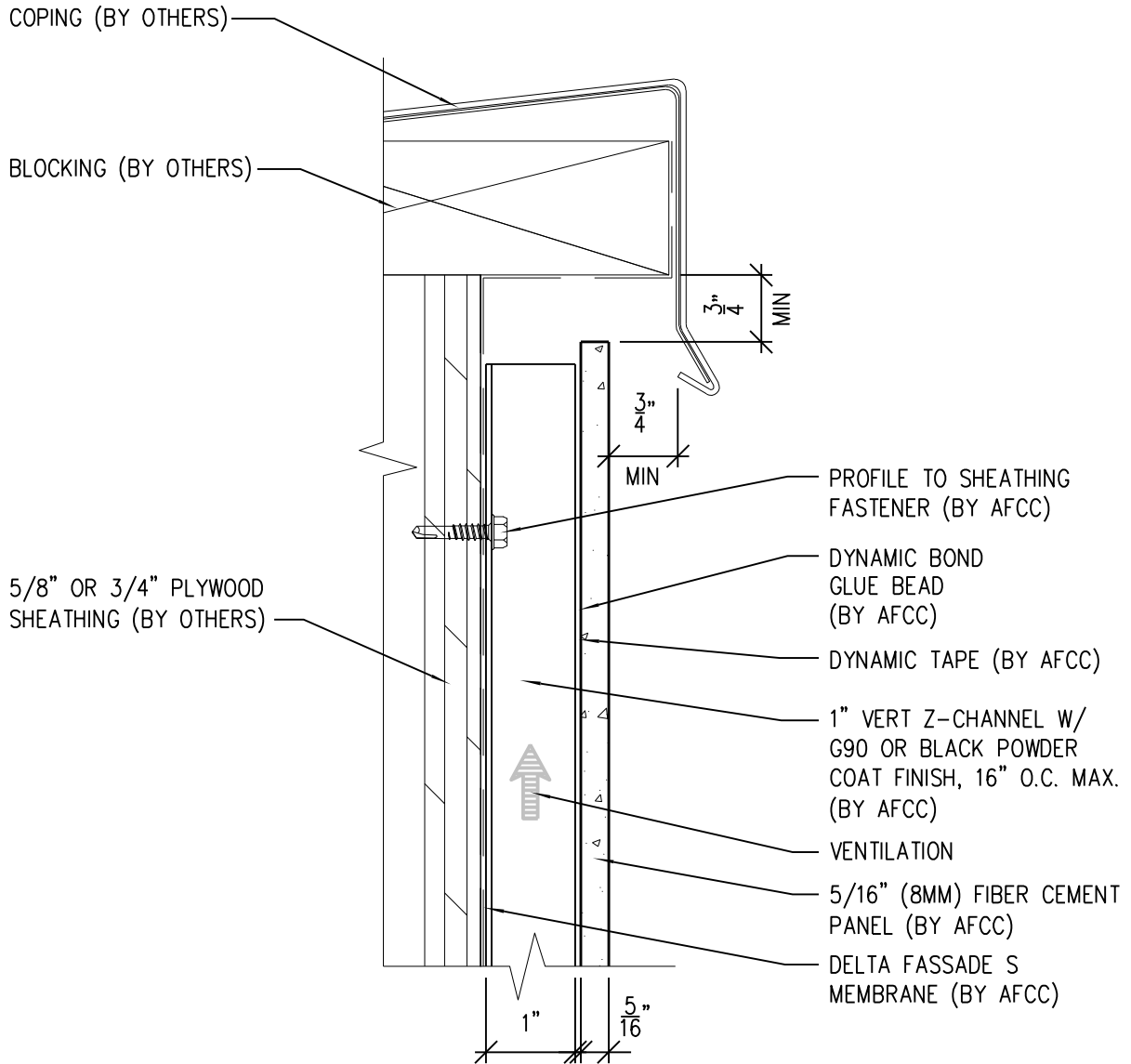


# American Fiber Cement Corporation

## Typical Details

- Page 3: Top Panel @ Coping
- Page 4: Top Panel @ Soffit
- Page 5: Top of Panel @ F.C.P Soffit
- Page 6: Horizontal Joint @ Continuous Substrate
- Page 7: Horizontal Joint @ Break In Substrate
- Page 8: Not Permitted @ Break in Substrate
- Page 9: Bottom of Panel @ Wall Base
- Page 10: Bottom of Panel @ Open Termination
- Page 11: Bottom of Panel @ Low Roof Flashing
- Page 12: Bottom of Panel @ Soffit
- Page 13: Bottom of Panel @ Soffit (Alternate)
- Page 14: Bottom of Panel @ F.C.P Soffit
- Page 15: Bottom of Panel @ F.C.P Soffit (Alternate)
- Page 16: Soffit Termination @ Adjacent Material
- Page 17: Bottom of Panel @ Window Head
- Page 18: Bottom of Panel @ Window Head (Alternate)
- Page 19: Top of Panel @ Window Sill
- Page 20: Panel Edge @ Window Jamb
- Page 21: Panel Edge @ Window Jamb (Alternate)
- Page 22: Vertical Panel Joint Option 1
- Page 23: Vertical Panel Joint Option 2
- Page 24: Panel Edge @ Butt Joint
- Page 25: Panels @ Outside Corner
- Page 26: Panels @ Inside Corner
- Page 27: Dynamic Bond Typical Detail

# One-Layer Steel Attachment System With Dynamic Bond Adhesive Fastening



SCALE: 6" = 1'-0"

**NOTES:**

1. PANEL VERTICAL AND HORIZONTAL JOINT SPACING SHOULD BE 3/8" TYPICAL.



**American Fiber  
Cement Corporation**

(303) 972-5107

[www.americanfibercement.com](http://www.americanfibercement.com)

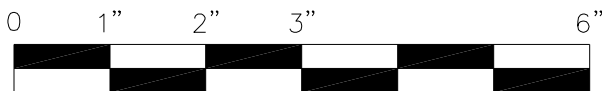
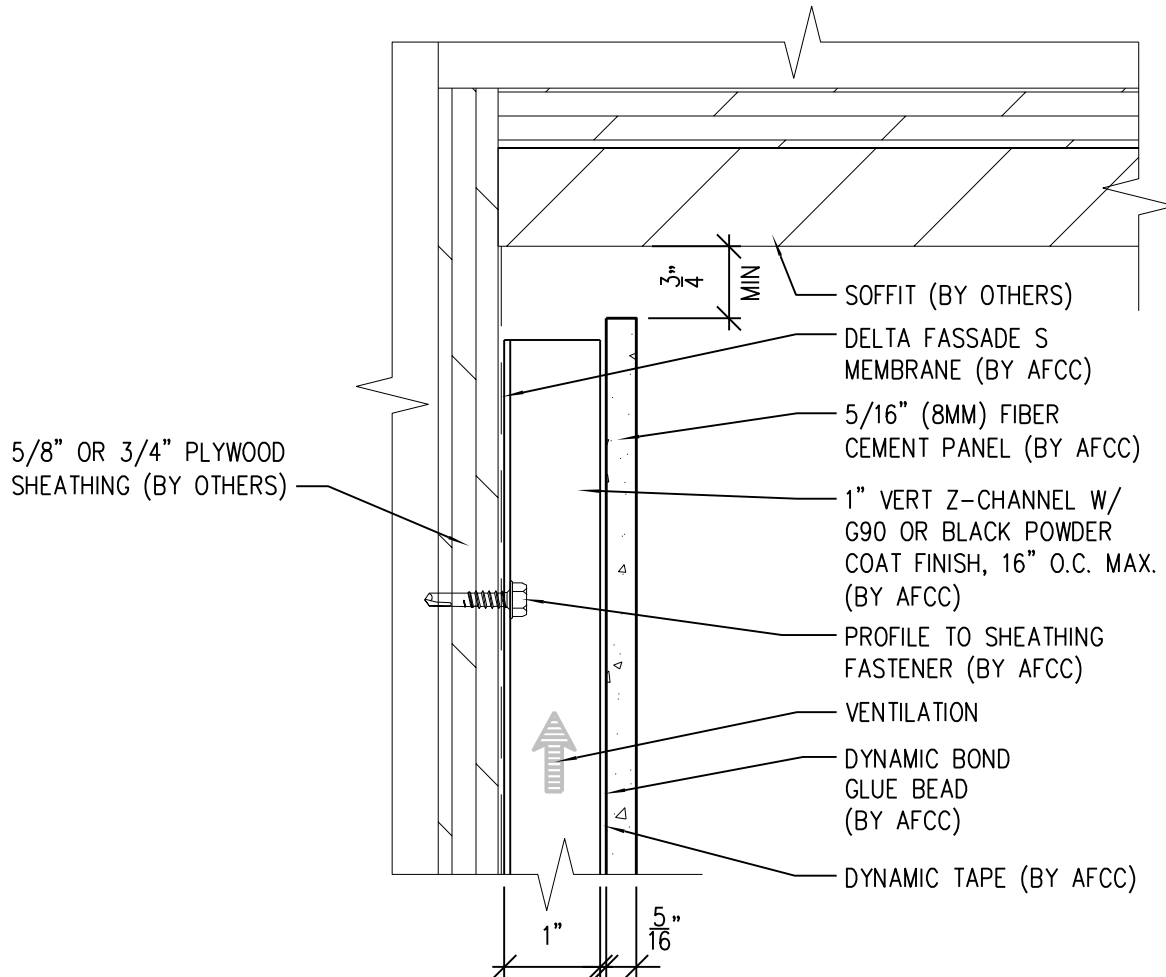
6901 S Pierce St #180, Littleton, CO 80128

Ref.:

Top of Panel @  
Coping

Date: 11/26/2021

# One-Layer Steel Attachment System With Dynamic Bond Adhesive Fastening



SCALE: 6" = 1'-0"

**NOTES:**

1. PANEL VERTICAL AND HORIZONTAL JOINT SPACING SHOULD BE 3/8" TYPICAL.



**American Fiber  
Cement Corporation**

(303) 972-5107

[www.americanfibercement.com](http://www.americanfibercement.com)

6901 S Pierce St #180, Littleton, CO 80128

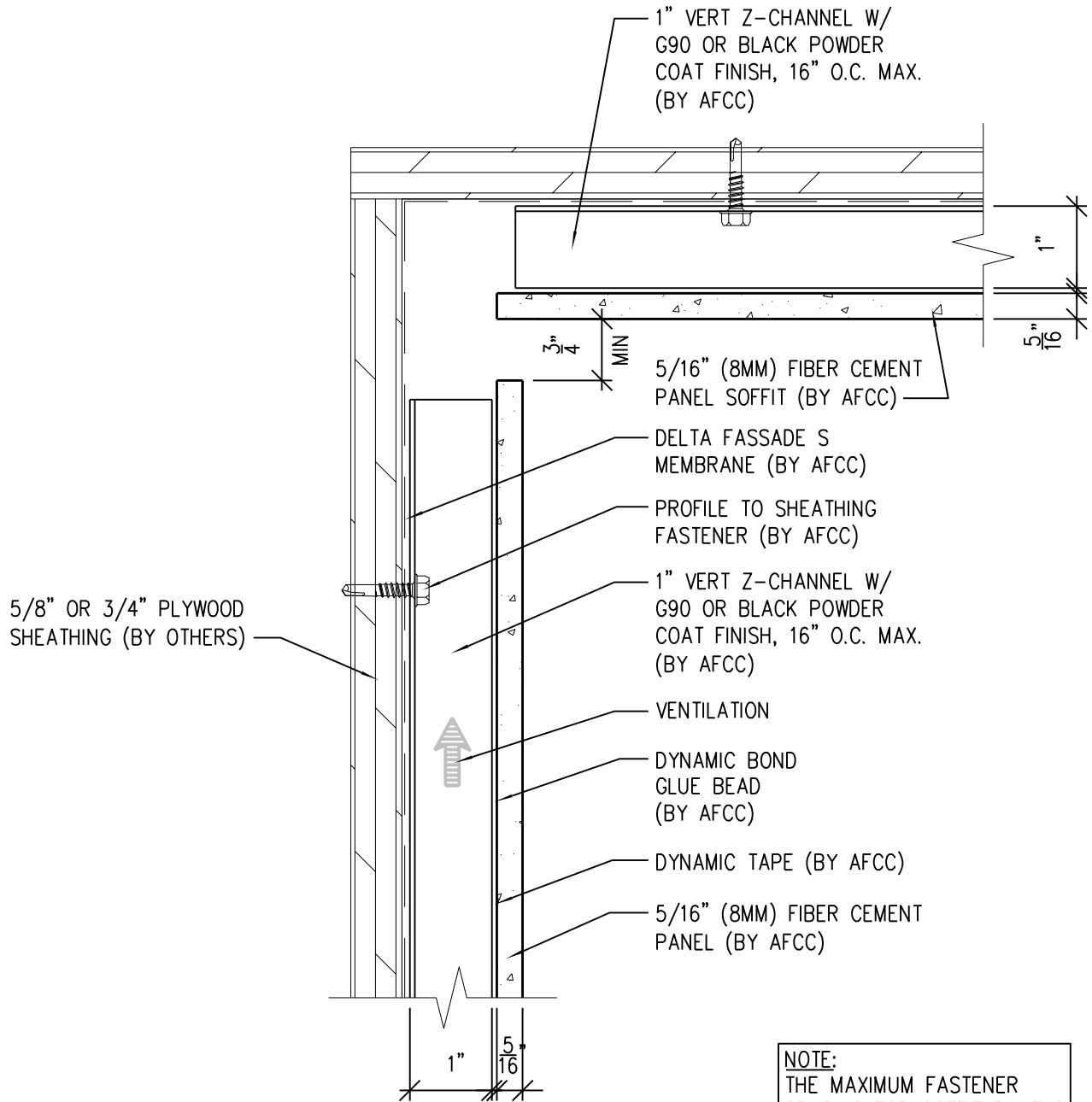
Ref.:

Top of Panel @  
Soffit

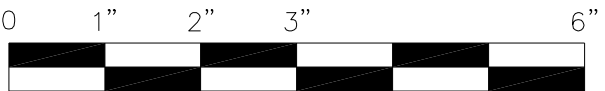
Date: 11/26/2021

# One-Layer Steel Attachment System

With Dynamic Bond Adhesive Fastening



**NOTE:**  
THE MAXIMUM FASTENER  
SPACING FOR SOFFIT PANELS  
IS 16" O.C.



SCALE: 6"=1'-0"

- NOTES:**
- PANEL VERTICAL AND HORIZONTAL JOINT SPACING SHOULD BE 3/8" TYPICAL.



**American Fiber  
Cement Corporation** [www.americanfibercement.com](http://www.americanfibercement.com)

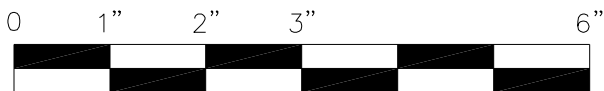
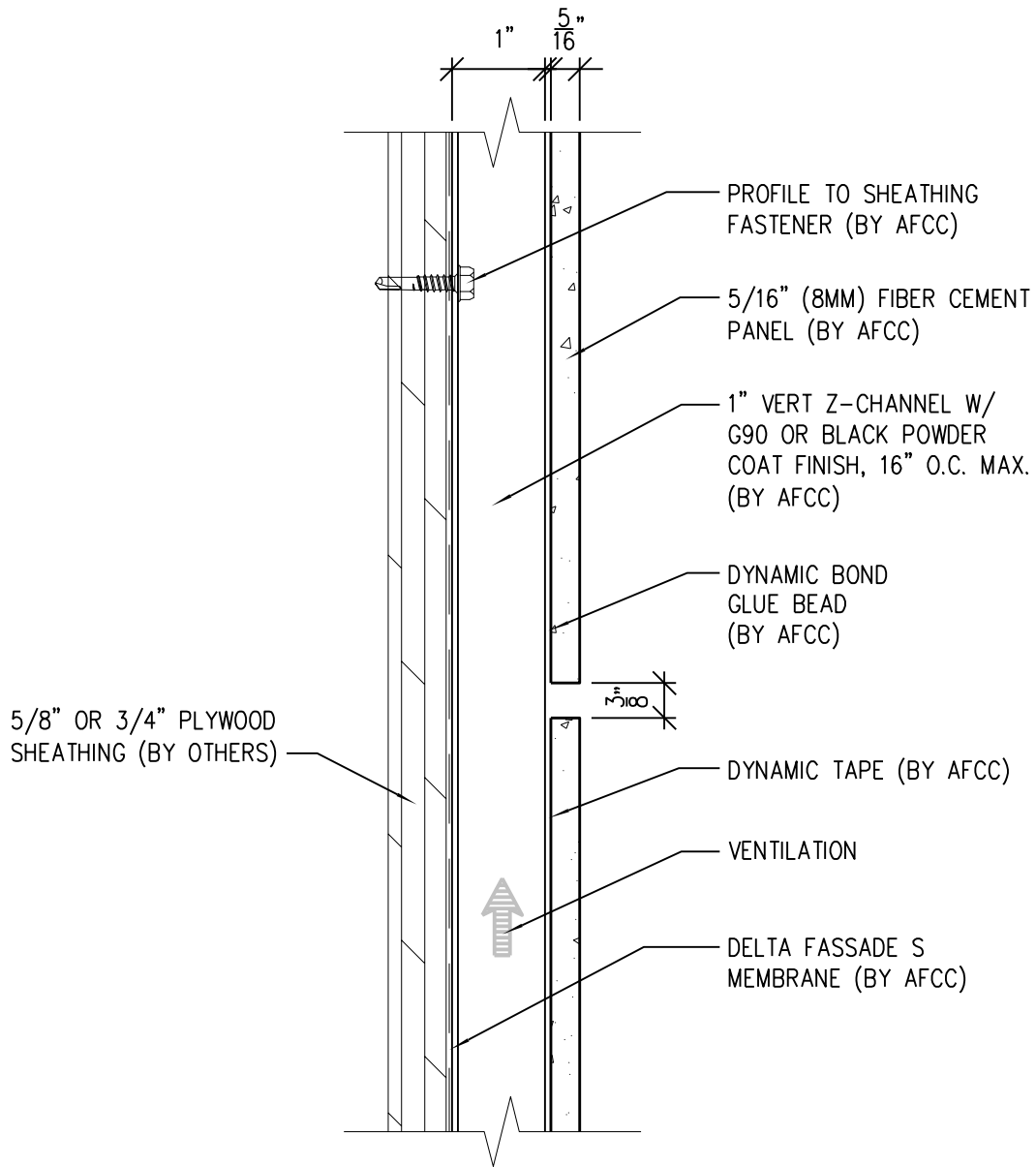
(303) 972-5107

6901 S Pierce St #180, Littleton, CO 80128

Ref.:  
Top of Panel @  
F.C.P. Soffit

Date: 11/26/2021

# One-Layer Steel Attachment System With Dynamic Bond Adhesive Fastening



SCALE: 6" = 1'-0"

**NOTES:**

1. PANEL VERTICAL AND HORIZONTAL JOINT SPACING SHOULD BE 3/8" TYPICAL.



**American Fiber  
Cement Corporation**

(303) 972-5107

[www.americanfibercement.com](http://www.americanfibercement.com)

6901 S Pierce St #180, Littleton, CO 80128

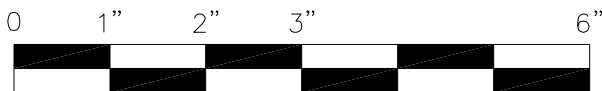
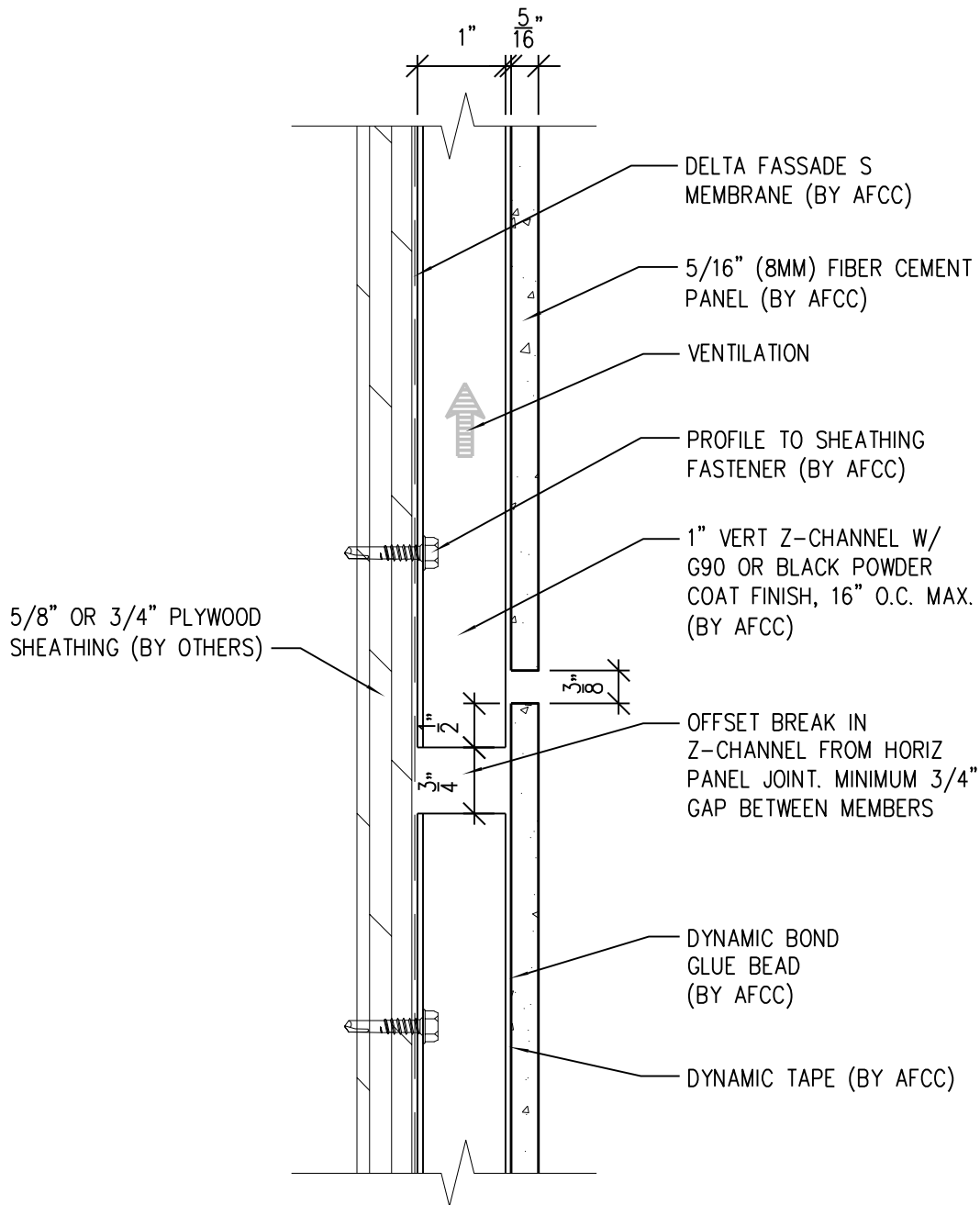
Ref.:

Horizontal Joint @  
Continuous Substrate

Date: 11/26/2021

# One-Layer Steel Attachment System

With Dynamic Bond Adhesive Fastening



SCALE: 6"=1'-0"

**NOTES:**

1. PANEL VERTICAL AND HORIZONTAL JOINT SPACING SHOULD BE 3/8" TYPICAL.



**American Fiber  
Cement Corporation**

(303) 972-5107

[www.americanfibercement.com](http://www.americanfibercement.com)

6901 S Pierce St #180, Littleton, CO 80128

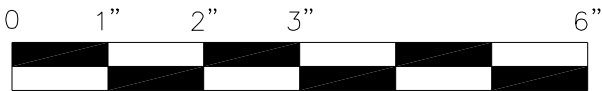
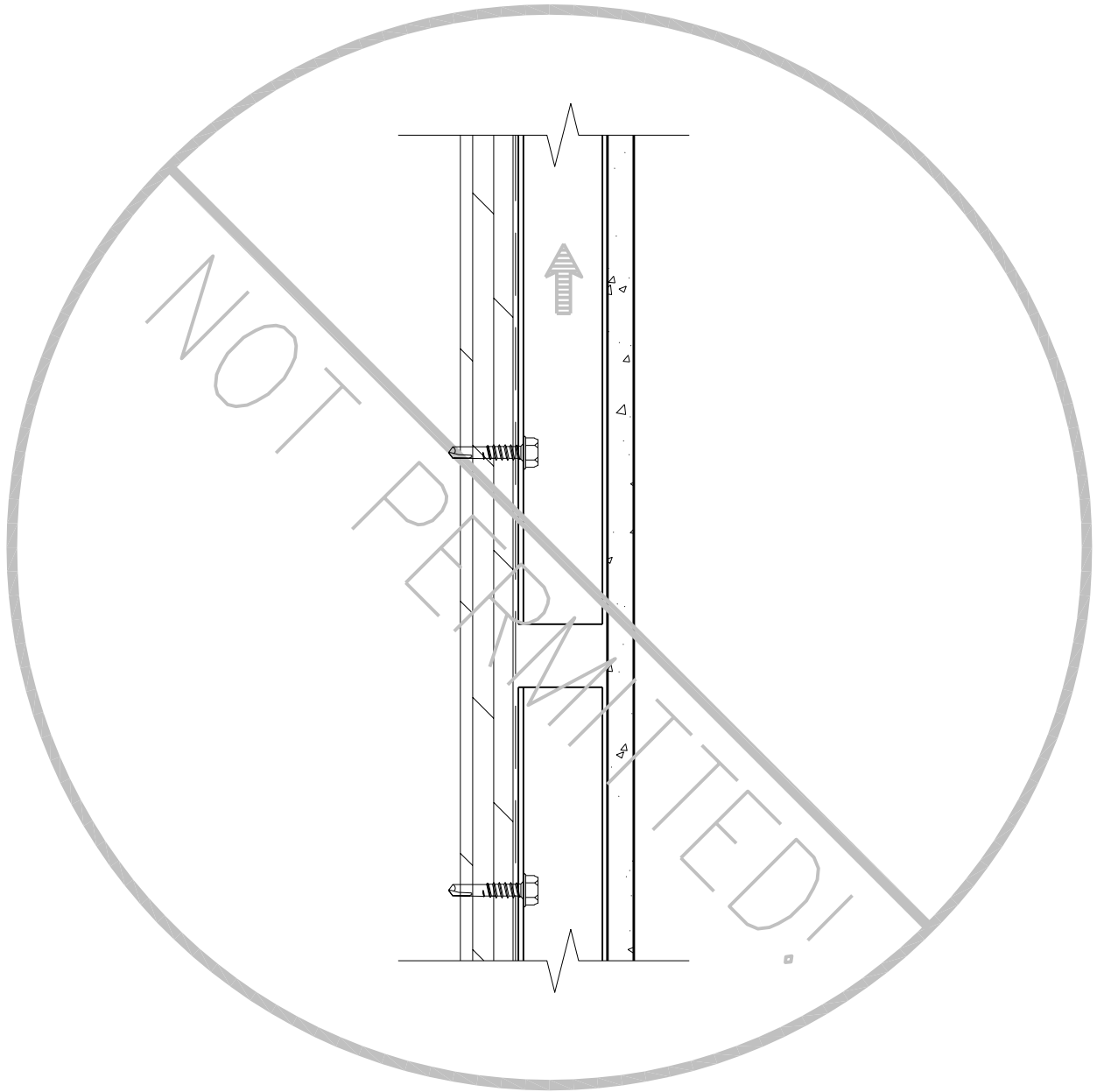
Ref.:

Horizontal Joint @  
Break in Substrate

Date: 11/26/2021

# One-Layer Steel Attachment System

With Dynamic Bond Adhesive Fastening



SCALE: 6"=1'-0"

**NOTES:**

1. PANEL VERTICAL AND HORIZONTAL JOINT SPACING SHOULD BE 3/8" TYPICAL.



**American Fiber  
Cement Corporation**

(303) 972-5107

[www.americanfibercement.com](http://www.americanfibercement.com)

6901 S Pierce St #180, Littleton, CO 80128

Ref.:

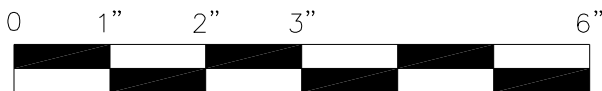
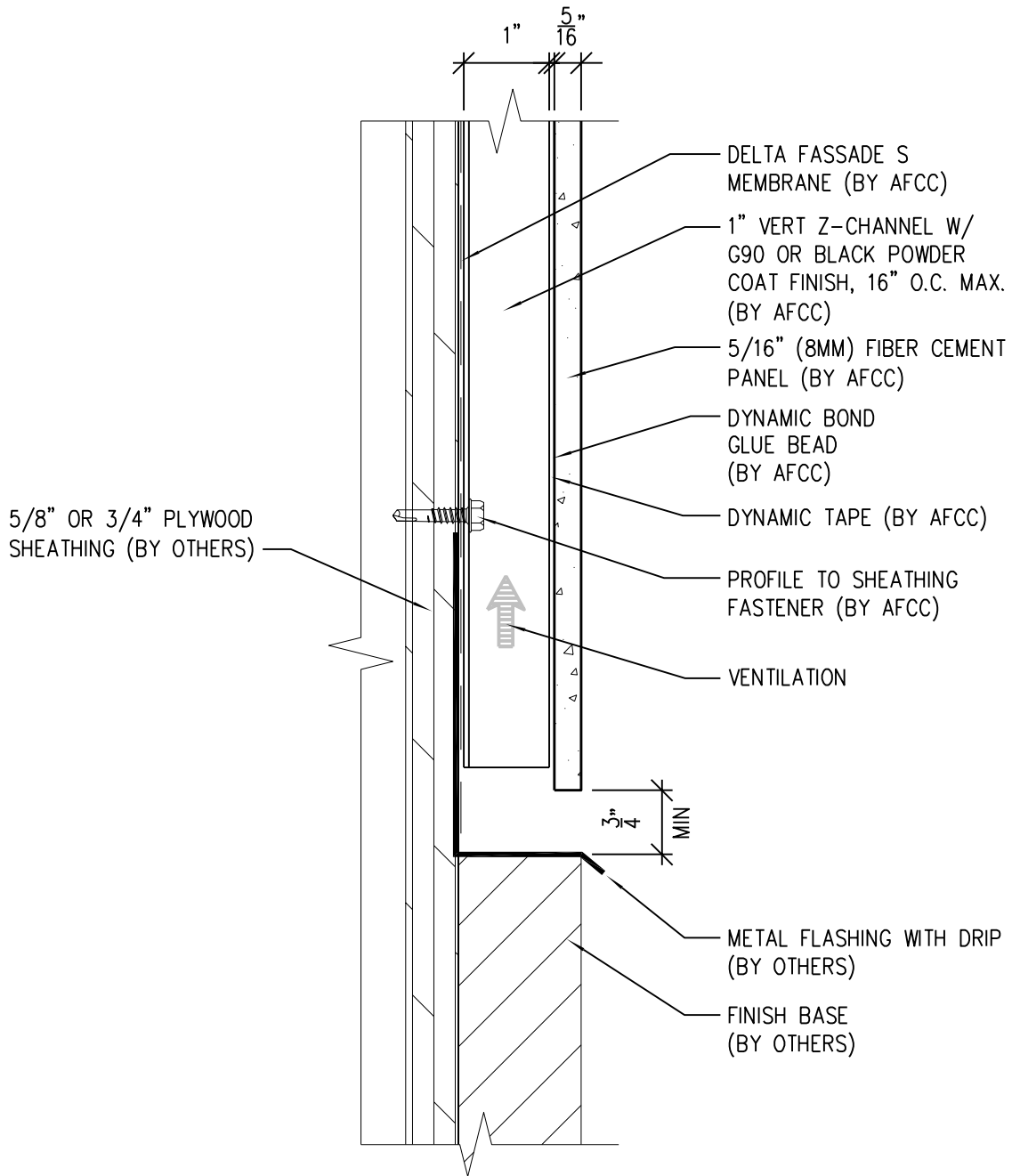
Not Permitted @  
Break in Substrate

Date: 11/26/2021



# One-Layer Steel Attachment System

With Dynamic Bond Adhesive Fastening



SCALE: 6"=1'-0"

**NOTES:**

1. PANEL VERTICAL AND HORIZONTAL JOINT SPACING SHOULD BE 3/8" TYPICAL.



**American Fiber  
Cement Corporation**

(303) 972-5107

[www.americanfibercement.com](http://www.americanfibercement.com)

6901 S Pierce St #180, Littleton, CO 80128

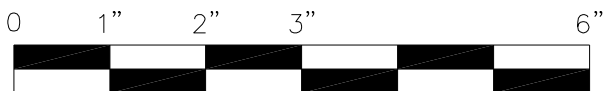
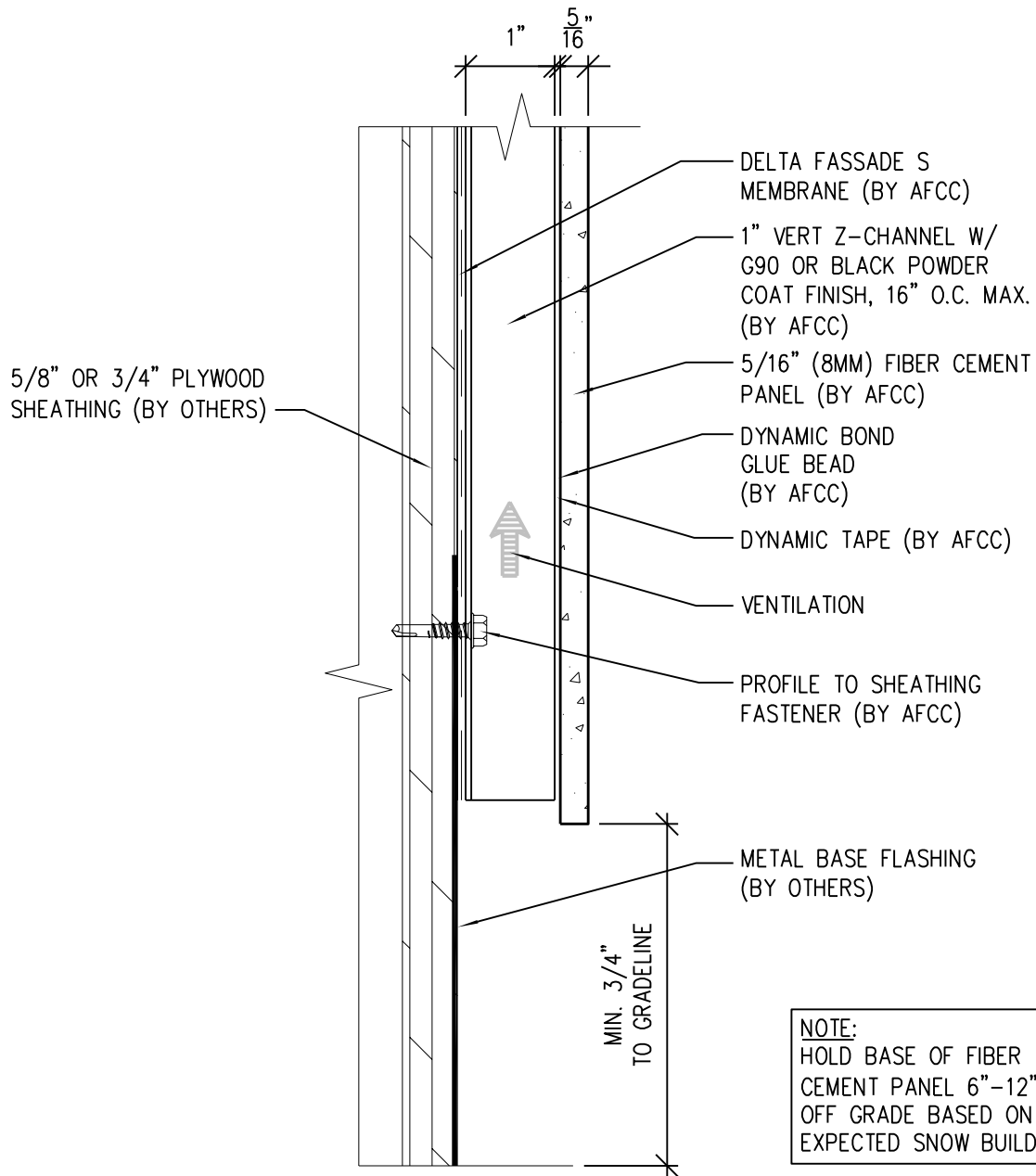
Ref.:

Bottom of Panel @  
Wall Base

Date: 11/26/2021

# One-Layer Steel Attachment System

With Dynamic Bond Adhesive Fastening



SCALE: 6"=1'-0"

**NOTES:**

1. PANEL VERTICAL AND HORIZONTAL JOINT SPACING SHOULD BE 3/8" TYPICAL.



**American Fiber  
Cement Corporation**

(303) 972-5107

[www.americanfibercement.com](http://www.americanfibercement.com)

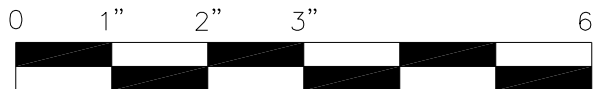
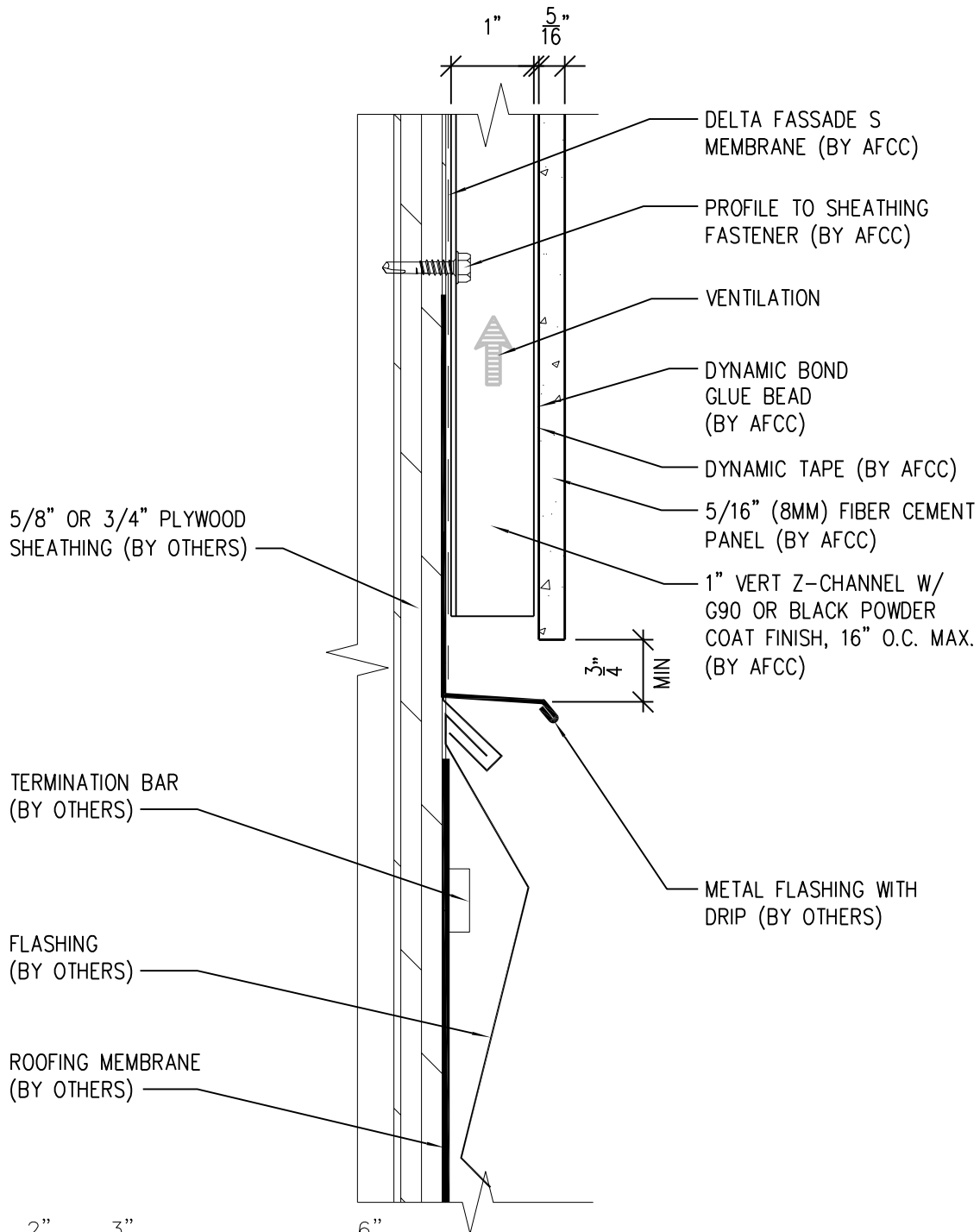
6901 S Pierce St #180, Littleton, CO 80128

Ref.:

Bottom of Panel @  
Open Termination

Date: 11/26/2021

# One-Layer Steel Attachment System With Dynamic Bond Adhesive Fastening



SCALE: 6"=1'-0"

**NOTES:**

1. PANEL VERTICAL AND HORIZONTAL JOINT SPACING SHOULD BE 3/8" TYPICAL.



**American Fiber  
Cement Corporation**

(303) 972-5107

[www.americanfibercement.com](http://www.americanfibercement.com)

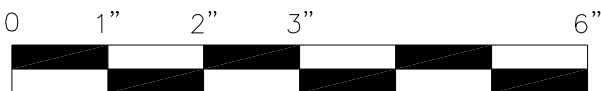
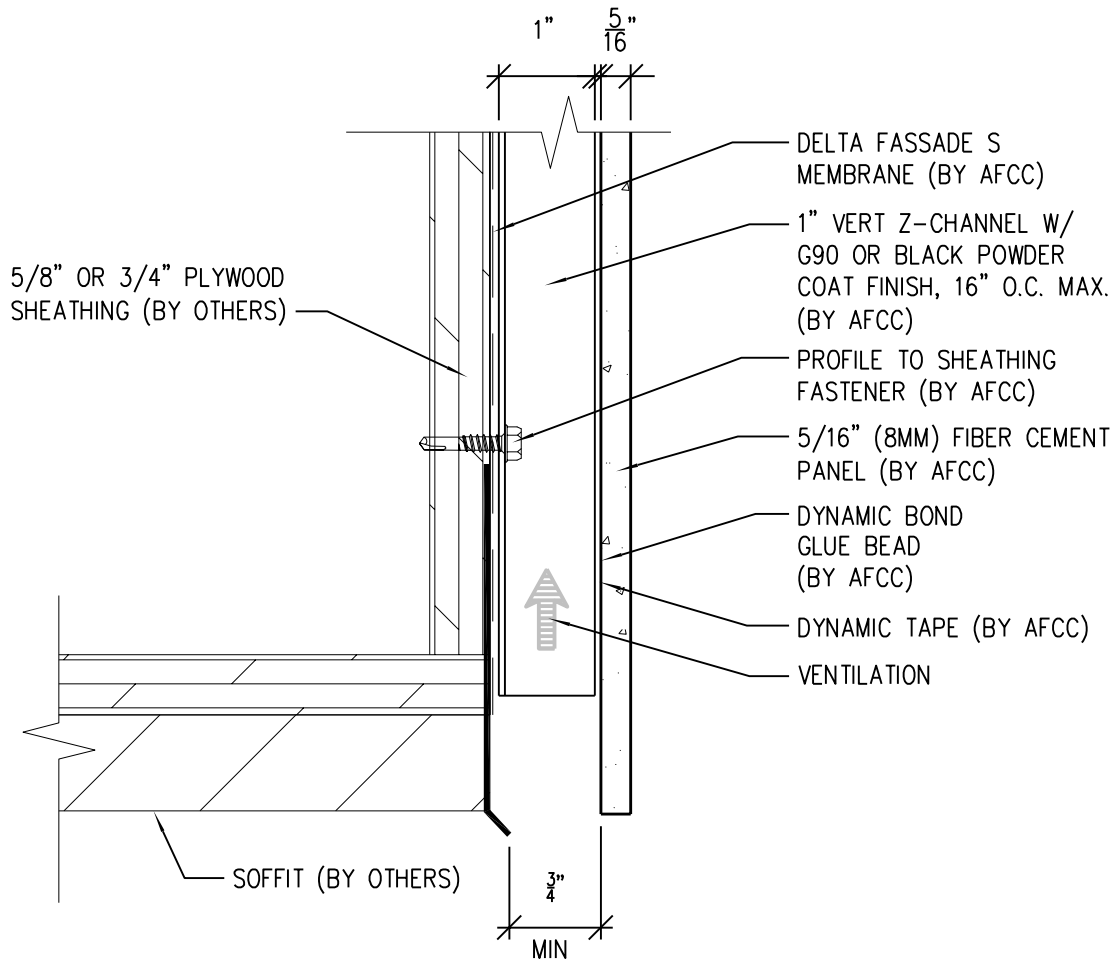
6901 S Pierce St #180, Littleton, CO 80128

Ref.:

Bottom of Panel @  
Low Roof Flashing

Date: 11/26/2021

# One-Layer Steel Attachment System With Dynamic Bond Adhesive Fastening



SCALE: 6" = 1'-0"

**NOTES:**

1. PANEL VERTICAL AND HORIZONTAL JOINT SPACING SHOULD BE 3/8" TYPICAL.



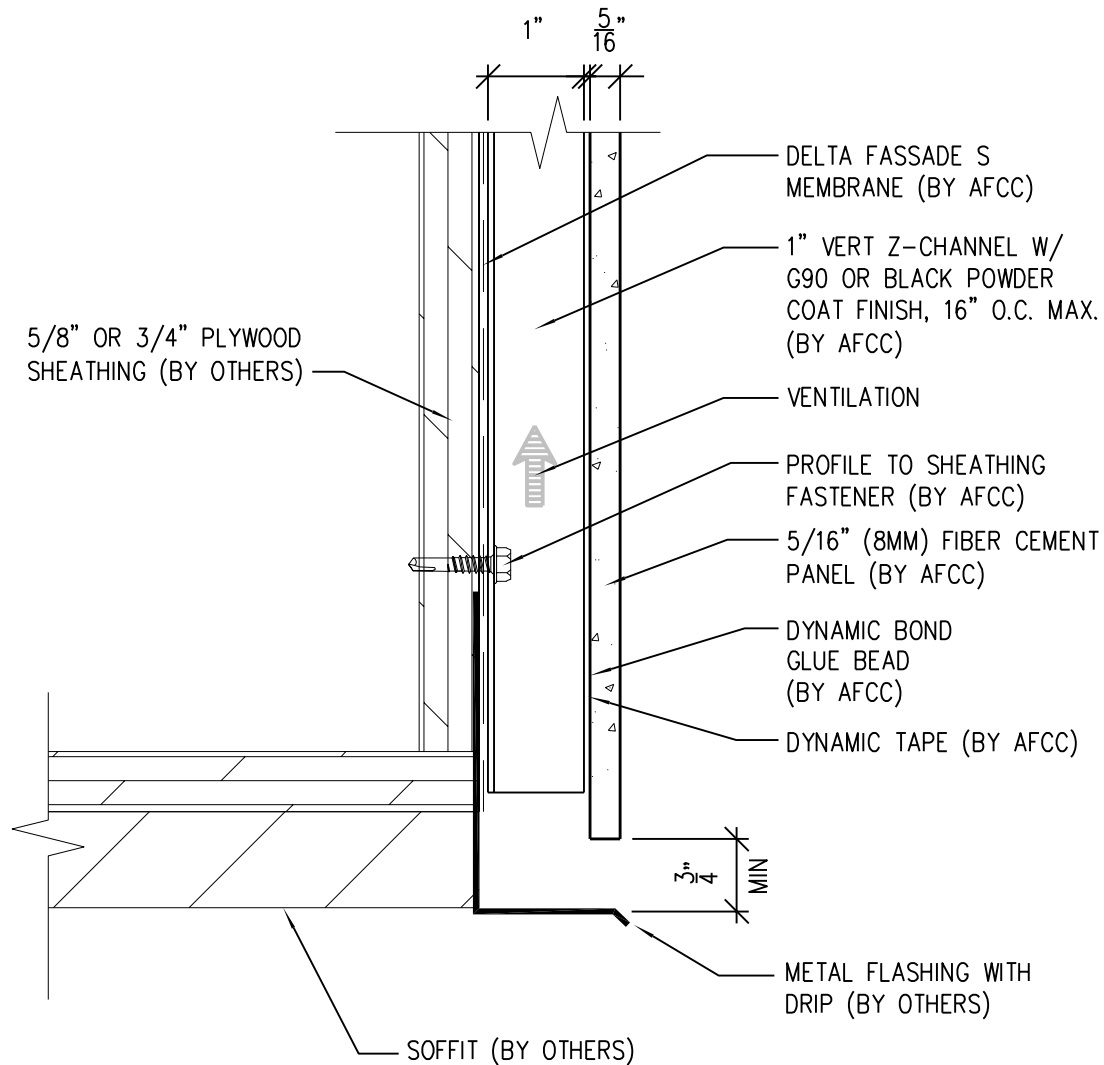
**American Fiber Cement Corporation** (303) 972-5107  
www.americanfibercement.com

6901 S Pierce St #180, Littleton, CO 80128

Ref.:  
Bottom of Panel @  
Soffit

Date: 11/26/2021

# One-Layer Steel Attachment System With Dynamic Bond Adhesive Fastening



SCALE: 6"=1'-0"

**NOTES:**

1. PANEL VERTICAL AND HORIZONTAL JOINT SPACING SHOULD BE 3/8" TYPICAL.



**American Fiber  
Cement Corporation**

(303) 972-5107

[www.americanfibercement.com](http://www.americanfibercement.com)

6901 S Pierce St #180, Littleton, CO 80128

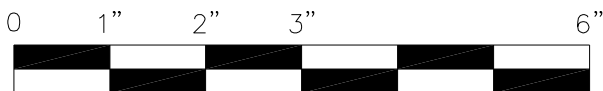
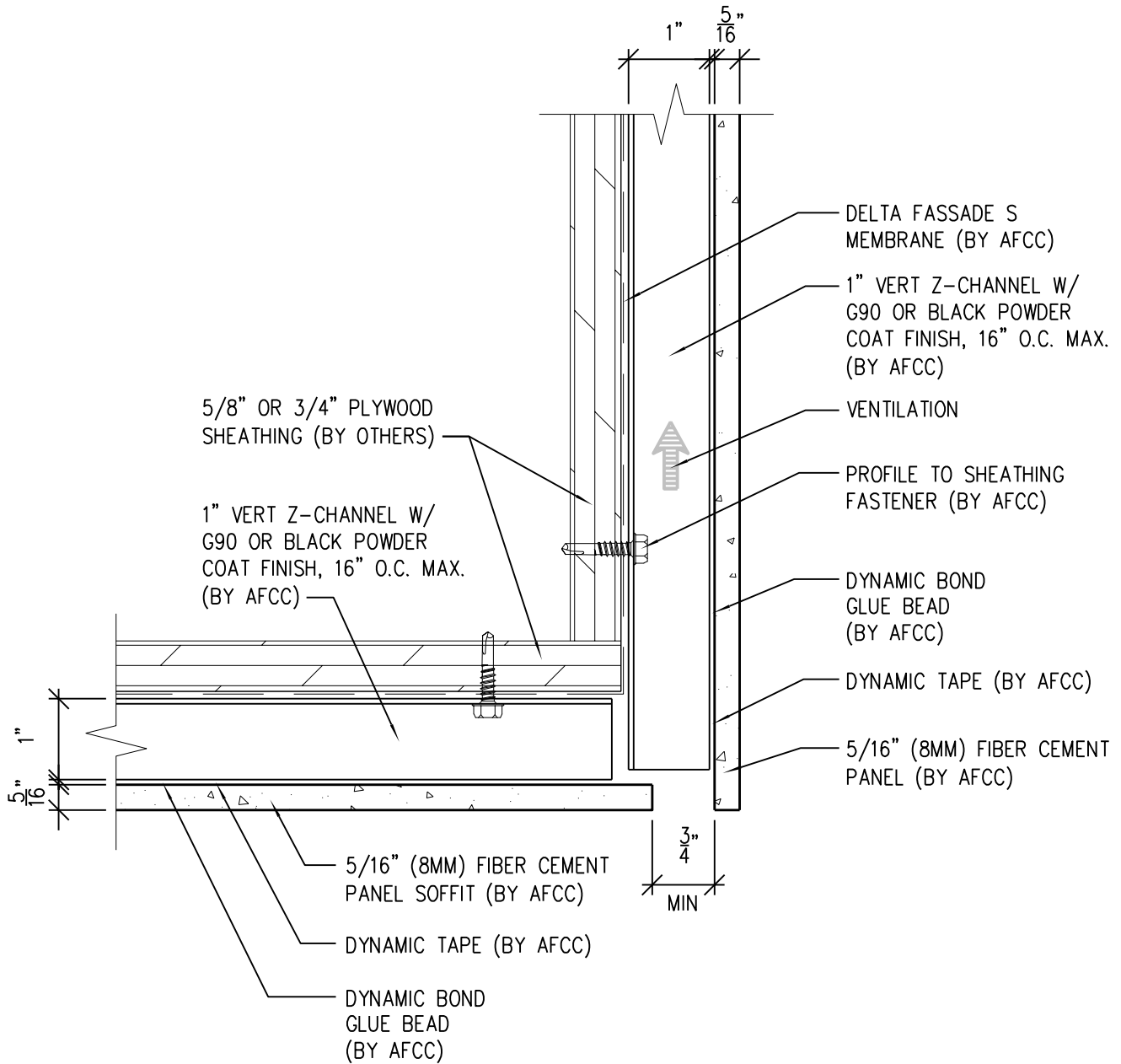
Ref.:

Bottom of Panel @  
Soffit (Alternate)

Date: 11/26/2021

# One-Layer Steel Attachment System

With Dynamic Bond Adhesive Fastening



SCALE: 6"=1'-0"

**NOTES:**

1. PANEL VERTICAL AND HORIZONTAL JOINT SPACING SHOULD BE 3/8" TYPICAL.



**American Fiber  
Cement Corporation**

(303) 972-5107

[www.americanfibercement.com](http://www.americanfibercement.com)

6901 S Pierce St #180, Littleton, CO 80128

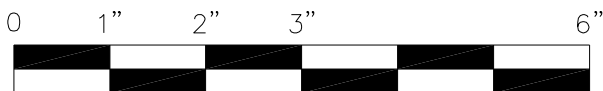
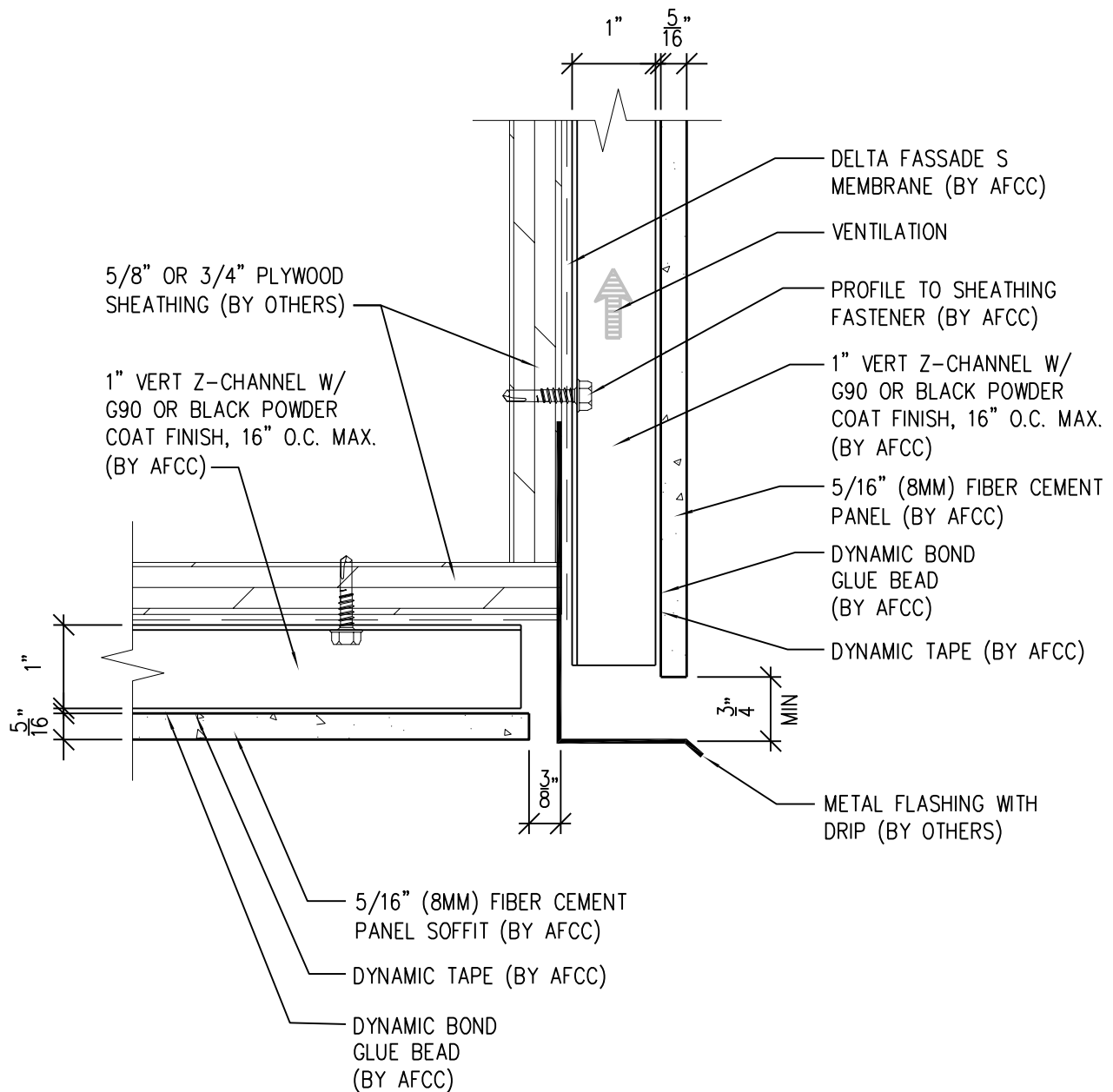
Ref.:

Bottom of Panel @  
F.C.P. Soffit

Date: 11/26/2021

# One-Layer Steel Attachment System

With Dynamic Bond Adhesive Fastening



SCALE: 6"=1'-0"

**NOTES:**

1. PANEL VERTICAL AND HORIZONTAL JOINT SPACING SHOULD BE 3/8" TYPICAL.



**American Fiber  
Cement Corporation**

(303) 972-5107

[www.americanfibercement.com](http://www.americanfibercement.com)

6901 S Pierce St #180, Littleton, CO 80128

Ref.:

Bottom of Panel @  
F.C.P. Soffit (Alternate)

Date: 11/26/2021

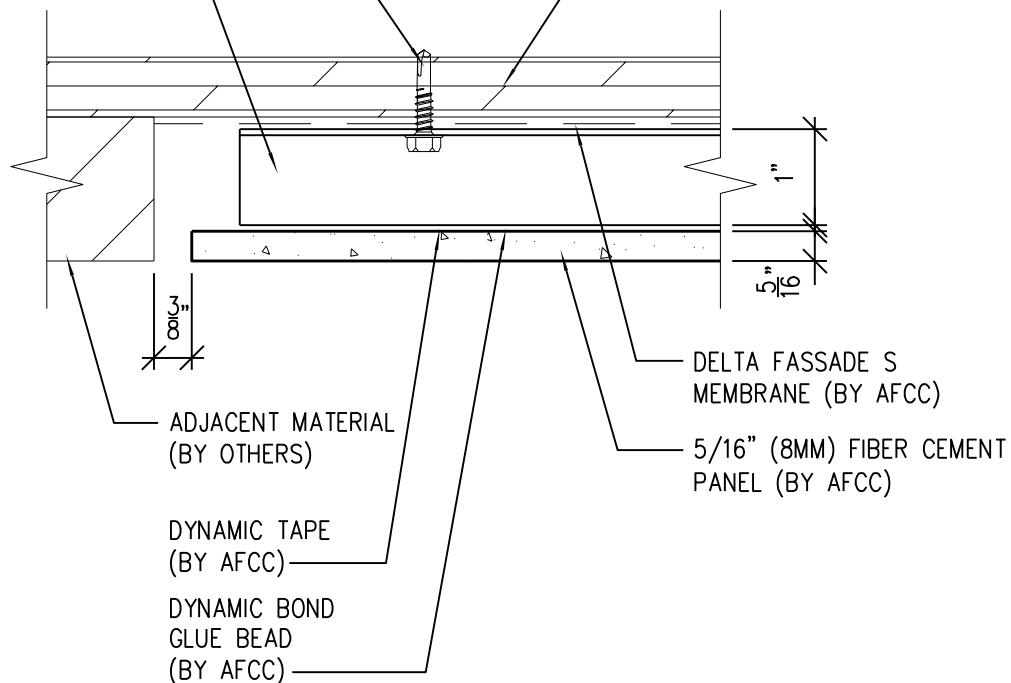
# One-Layer Steel Attachment System

## With Dynamic Bond Adhesive Fastening

PROFILE TO SHEATHING  
FASTENER (BY AFCC)

1" VERT Z-CHANNEL W/  
G90 OR BLACK POWDER  
COAT FINISH, 16" O.C. MAX.  
(BY AFCC)

5/8" OR 3/4" PLYWOOD  
SHEATHING (BY OTHERS)



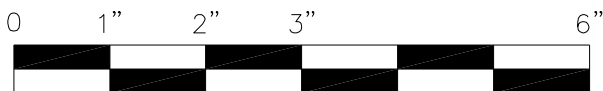
ADJACENT MATERIAL  
(BY OTHERS)

DELTA FASSADE S  
MEMBRANE (BY AFCC)

5/16" (8MM) FIBER CEMENT  
PANEL (BY AFCC)

DYNAMIC TAPE  
(BY AFCC)

DYNAMIC BOND  
GLUE BEAD  
(BY AFCC)



SCALE: 6"=1'-0"

### NOTES:

1. PANEL VERTICAL AND HORIZONTAL JOINT SPACING SHOULD BE 3/8" TYPICAL.



**American Fiber  
Cement Corporation**

(303) 972-5107

[www.americanfibercement.com](http://www.americanfibercement.com)

6901 S Pierce St #180, Littleton, CO 80128

Ref.:

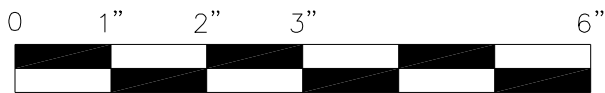
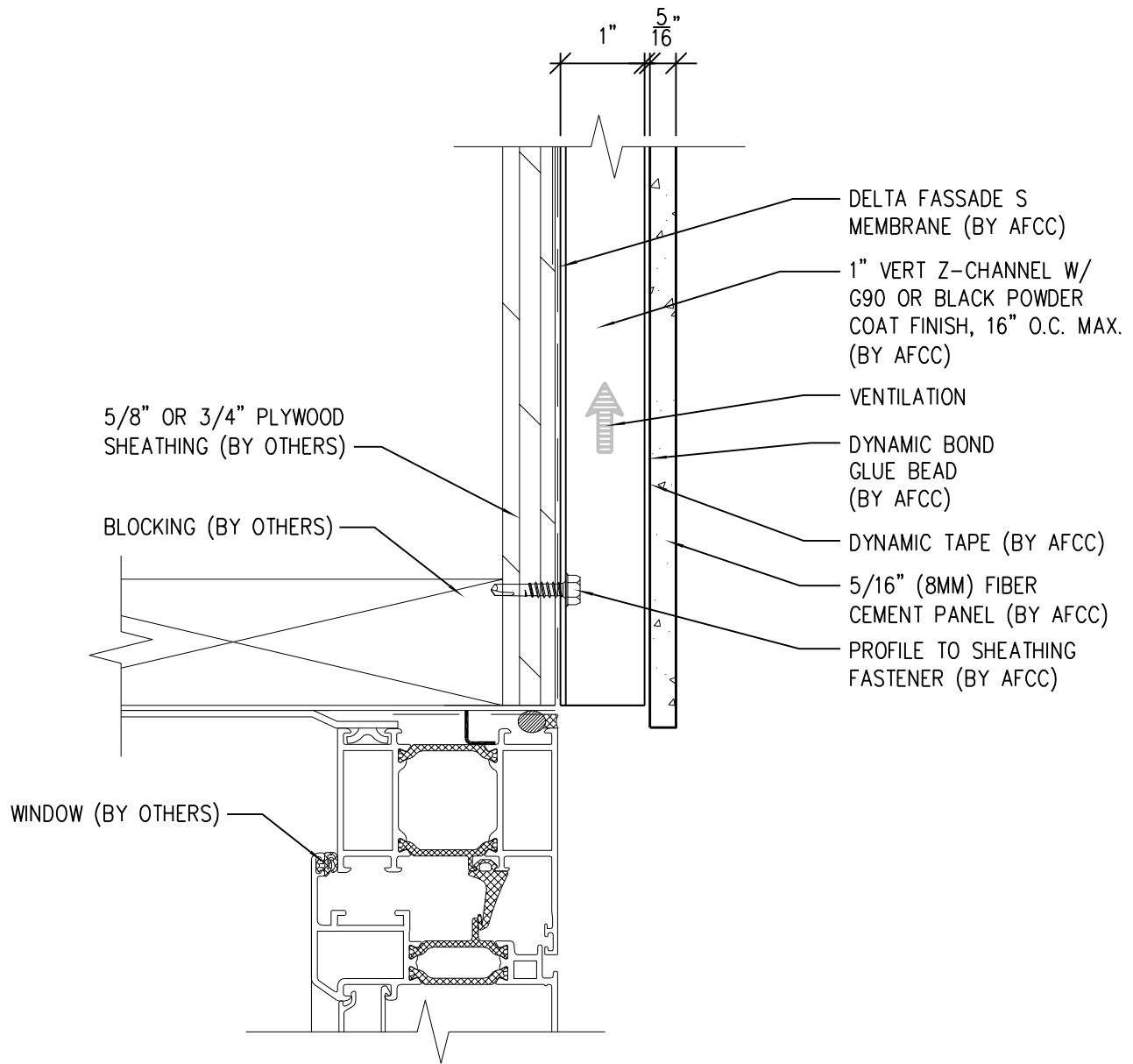
**Soffit Termination @  
Adjacent Material**

Date: 11/26/2021



# One-Layer Steel Attachment System

With Dynamic Bond Adhesive Fastening



SCALE: 6" = 1'-0"

**NOTES:**

1. PANEL VERTICAL AND HORIZONTAL JOINT SPACING SHOULD BE 3/8" TYPICAL.



**American Fiber  
Cement Corporation**

(303) 972-5107

[www.americanfibercement.com](http://www.americanfibercement.com)

6901 S Pierce St #180, Littleton, CO 80128

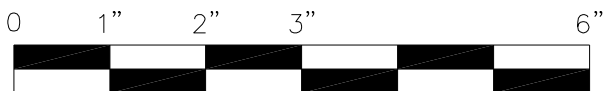
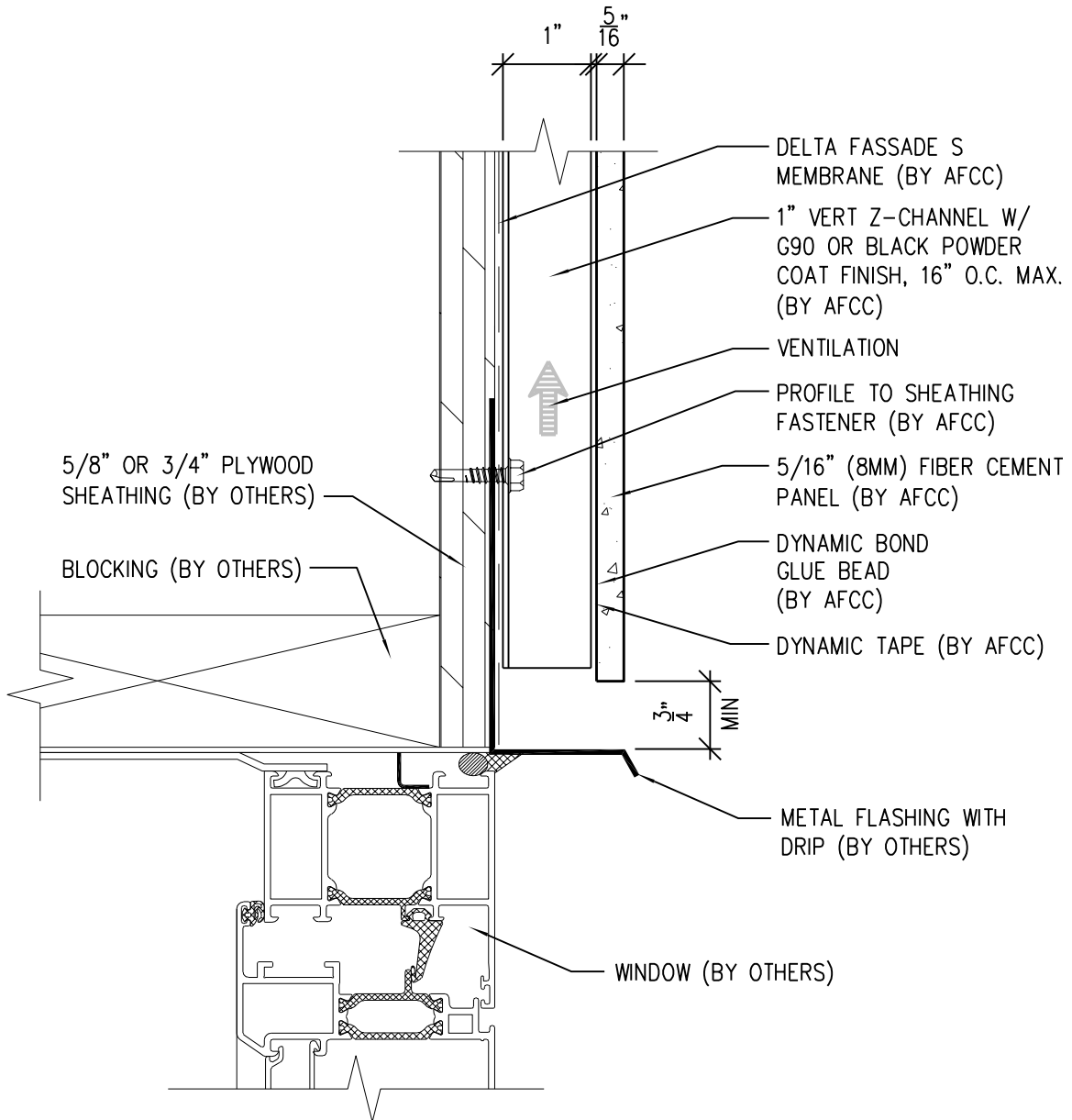
Ref.:

Bottom of Panel @  
Window Head

Date: 11/26/2021

# One-Layer Steel Attachment System

With Dynamic Bond Adhesive Fastening



SCALE: 6"=1'-0"

**NOTES:**

1. PANEL VERTICAL AND HORIZONTAL JOINT SPACING SHOULD BE 3/8" TYPICAL.



**American Fiber  
Cement Corporation**

(303) 972-5107

[www.americanfibercement.com](http://www.americanfibercement.com)

6901 S Pierce St #180, Littleton, CO 80128

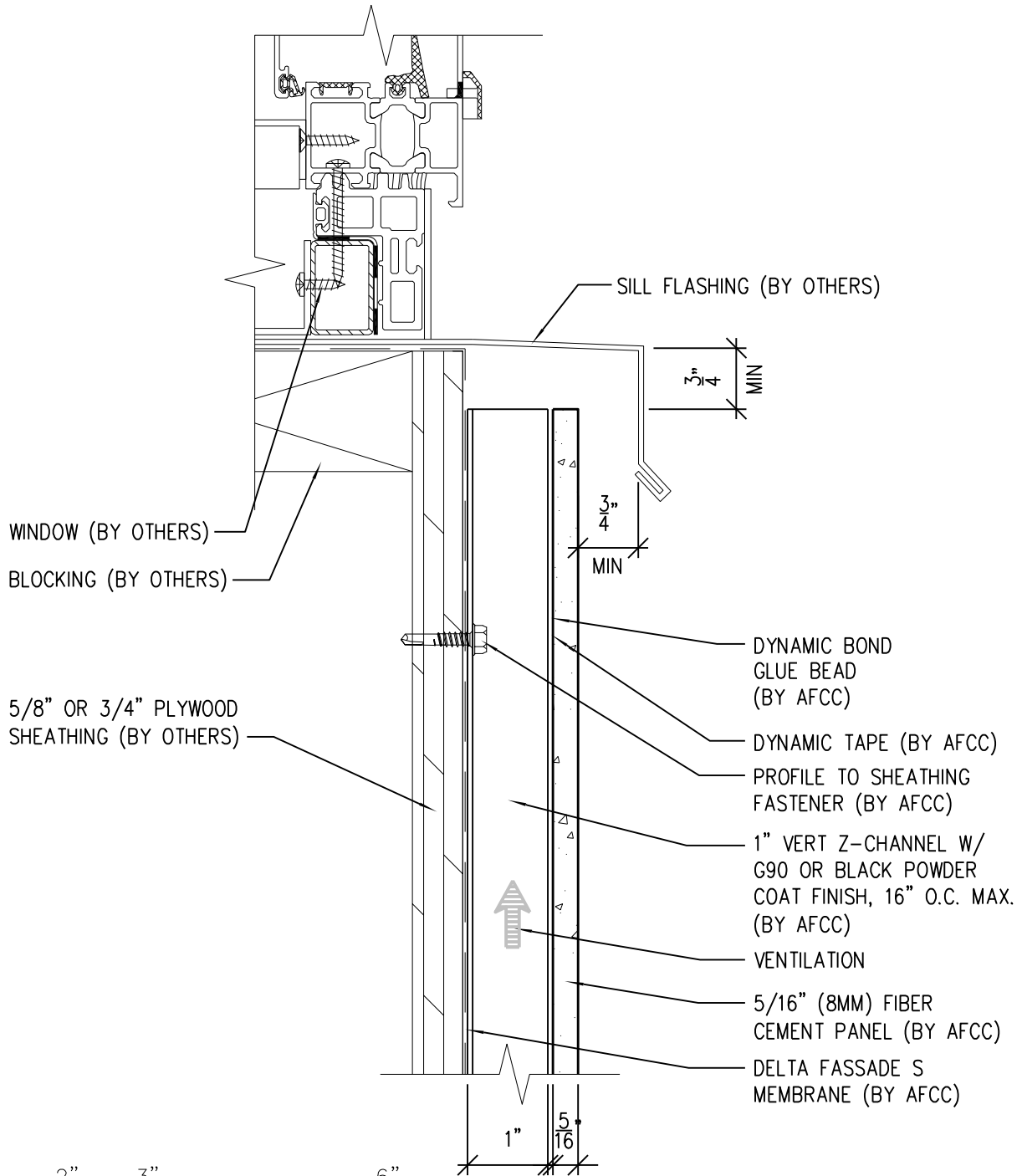
Ref.:

Bottom of Panel @  
Window Head (Alternate)

Date: 11/26/2021

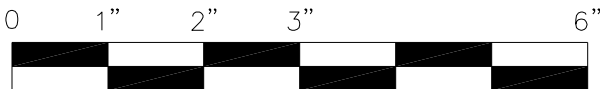
# One-Layer Steel Attachment System

With Dynamic Bond Adhesive Fastening



**NOTES:**

- PANEL VERTICAL AND HORIZONTAL JOINT SPACING SHOULD BE 3/8" TYPICAL.



SCALE: 6"=1'-0"

Ref.:

Top of Panel @  
Window Sill

Date: 11/26/2021



**American Fiber  
Cement Corporation**

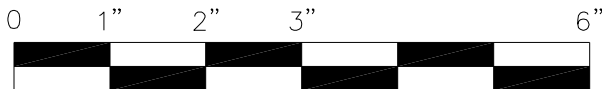
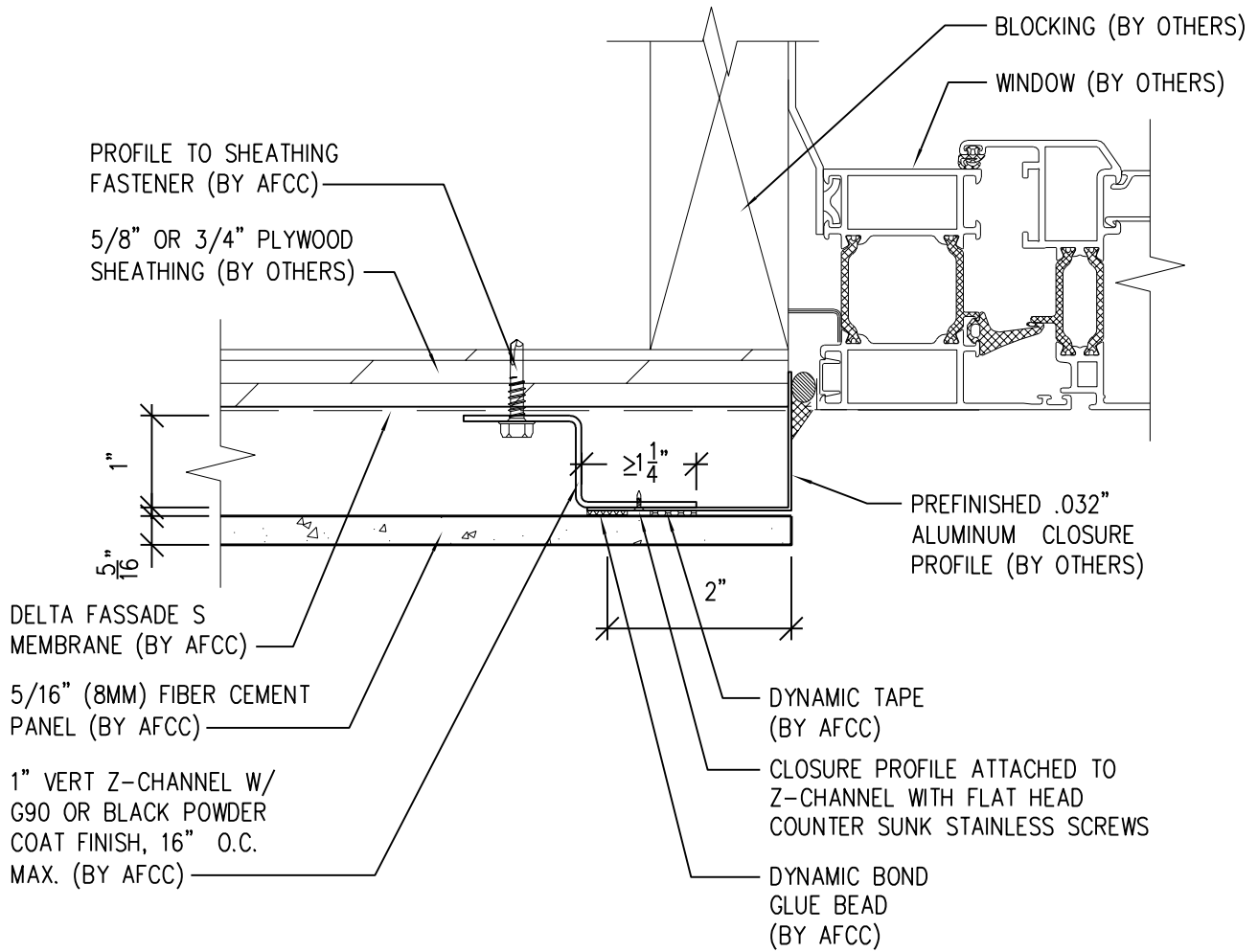
(303) 972-5107

[www.americanfibercement.com](http://www.americanfibercement.com)

6901 S Pierce St #180, Littleton, CO 80128

# One-Layer Steel Attachment System

With Dynamic Bond Adhesive Fastening



SCALE: 6"=1'-0"

**NOTES:**

1. PANEL VERTICAL AND HORIZONTAL JOINT SPACING SHOULD BE 3/8" TYPICAL.



**American Fiber  
Cement Corporation**

(303) 972-5107

[www.americanfibercement.com](http://www.americanfibercement.com)

6901 S Pierce St #180, Littleton, CO 80128

Ref.:

Panel Edge @  
Window Jamb

Date: 11/26/2021

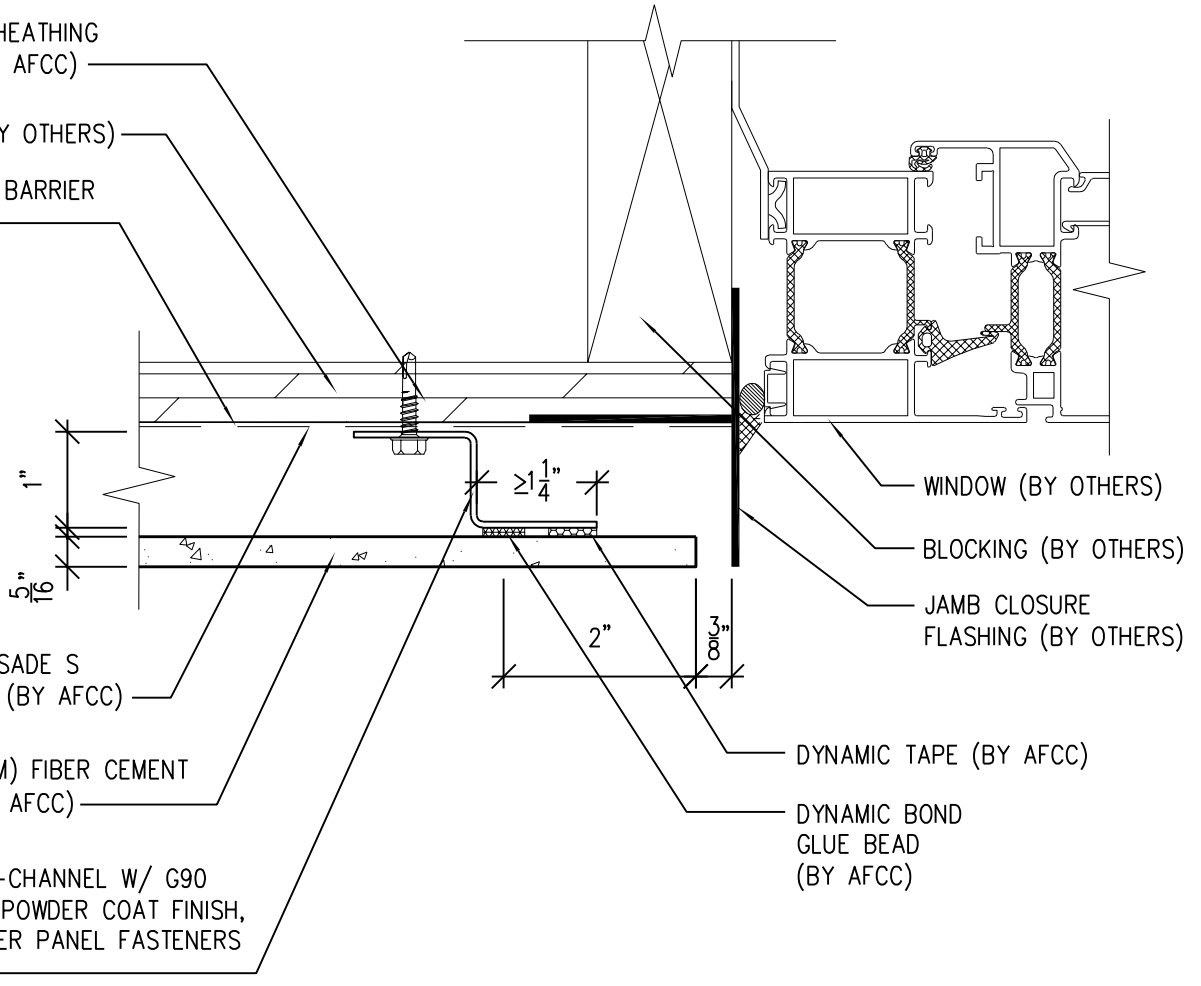
# One-Layer Steel Attachment System

With Dynamic Bond Adhesive Fastening

PROFILE TO SHEATHING  
FASTENER (BY AFCC)

SHEATHING (BY OTHERS)

OPTIONAL AIR BARRIER  
(BY OTHERS)



WINDOW (BY OTHERS)

BLOCKING (BY OTHERS)

JAMB CLOSURE  
FLASHING (BY OTHERS)

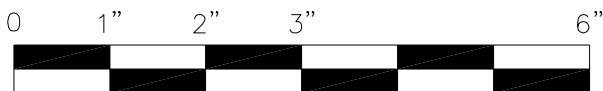
DYNAMIC TAPE (BY AFCC)

DYNAMIC BOND  
GLUE BEAD  
(BY AFCC)

DELTA FASSADE S  
MEMBRANE (BY AFCC)

5/16" (8MM) FIBER CEMENT  
PANEL (BY AFCC)

1" VERT Z-CHANNEL W/ G90  
OR BLACK POWDER COAT FINISH,  
SPACING PER PANEL FASTENERS  
(BY AFCC)



SCALE: 6"=1'-0"

**NOTES:**

1. PANEL VERTICAL AND HORIZONTAL JOINT SPACING SHOULD BE 3/8" TYPICAL.



**American Fiber  
Cement Corporation**

(303) 972-5107

[www.americanfibercement.com](http://www.americanfibercement.com)

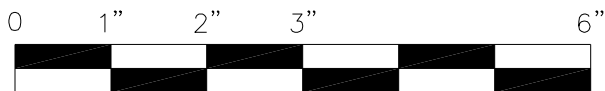
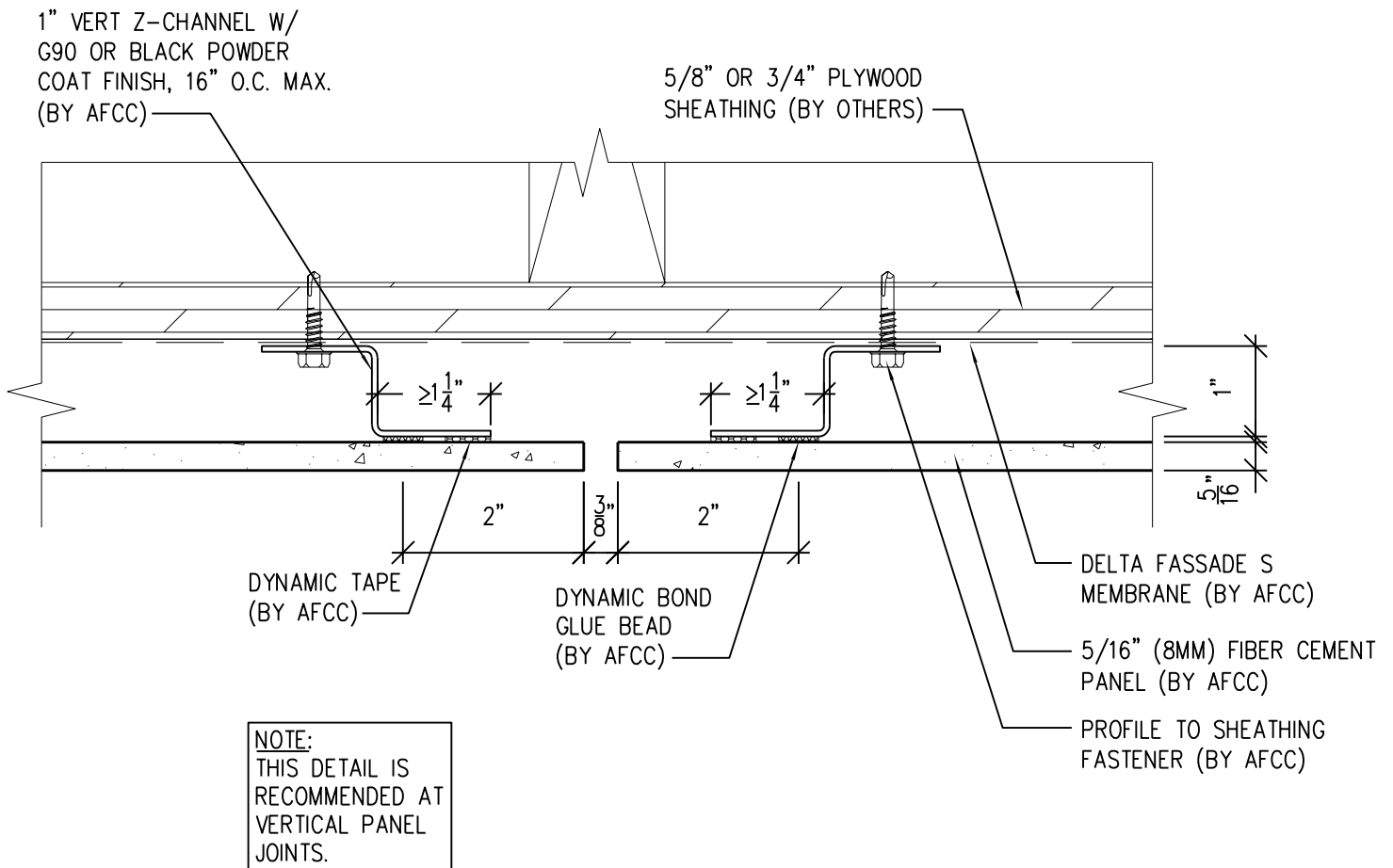
6901 S Pierce St #180, Littleton, CO 80128

Ref.:

Panel Edge @  
Window Jamb (Alternate)

Date: 11/26/2021

# One-Layer Steel Attachment System With Dynamic Bond Adhesive Fastening



SCALE: 6"=1'-0"

**NOTES:**

1. PANEL VERTICAL AND HORIZONTAL JOINT SPACING SHOULD BE 3/8" TYPICAL.



**American Fiber  
Cement Corporation** [www.americanfibercement.com](http://www.americanfibercement.com)

(303) 972-5107

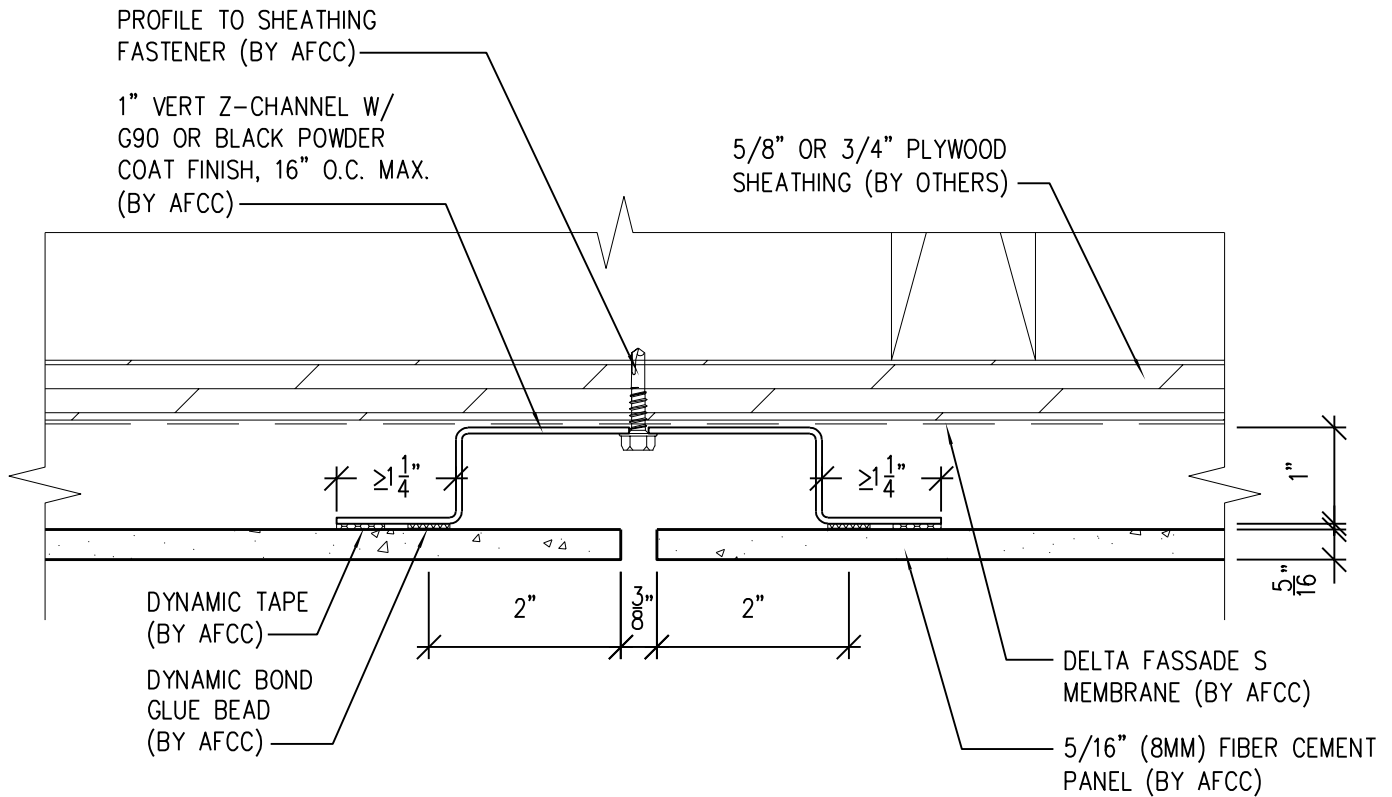
6901 S Pierce St #180, Littleton, CO 80128

Ref.:

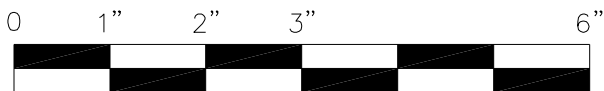
Vertical Panel Joint  
Option 1

Date: 11/26/2021

# One-Layer Steel Attachment System With Dynamic Bond Adhesive Fastening



**NOTE:**  
OPTION 1 DETAIL IS  
RECOMMENDED FOR  
VERTICAL PANEL JOINTS.



SCALE: 6" = 1'-0"

**NOTES:**

1. PANEL VERTICAL AND HORIZONTAL JOINT SPACING SHOULD BE 3/8" TYPICAL.



**American Fiber  
Cement Corporation** [www.americanfibercement.com](http://www.americanfibercement.com)

(303) 972-5107

6901 S Pierce St #180, Littleton, CO 80128

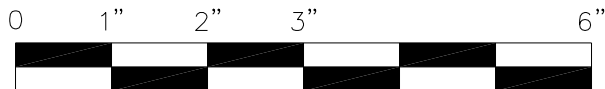
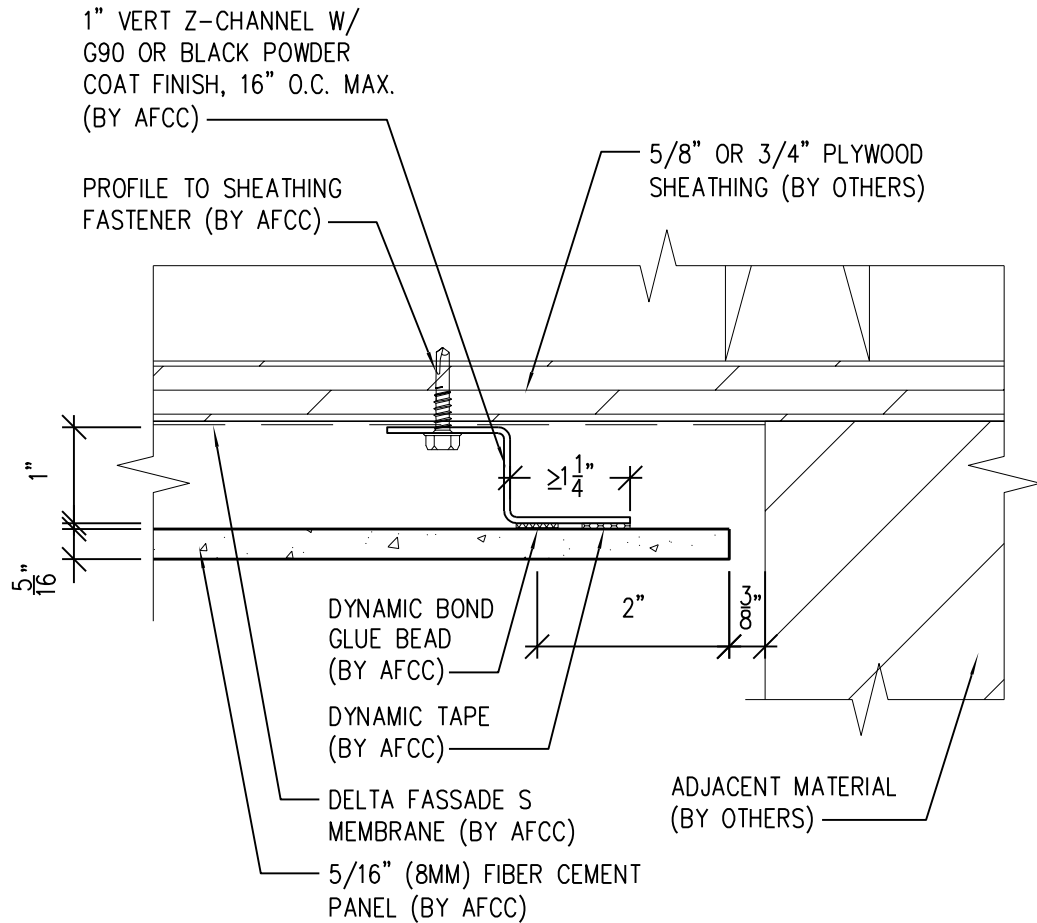
Ref.:

Vertical Panel Joint  
Option 2

Date: 11/26/2021

# One-Layer Steel Attachment System

## With Dynamic Bond Adhesive Fastening



SCALE: 6"=1'-0"

**NOTES:**

1. PANEL VERTICAL AND HORIZONTAL JOINT SPACING SHOULD BE 3/8" TYPICAL.



**American Fiber  
Cement Corporation**

(303) 972-5107

[www.americanfibercement.com](http://www.americanfibercement.com)

6901 S Pierce St #180, Littleton, CO 80128

Ref.:

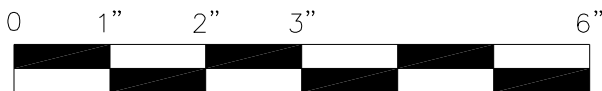
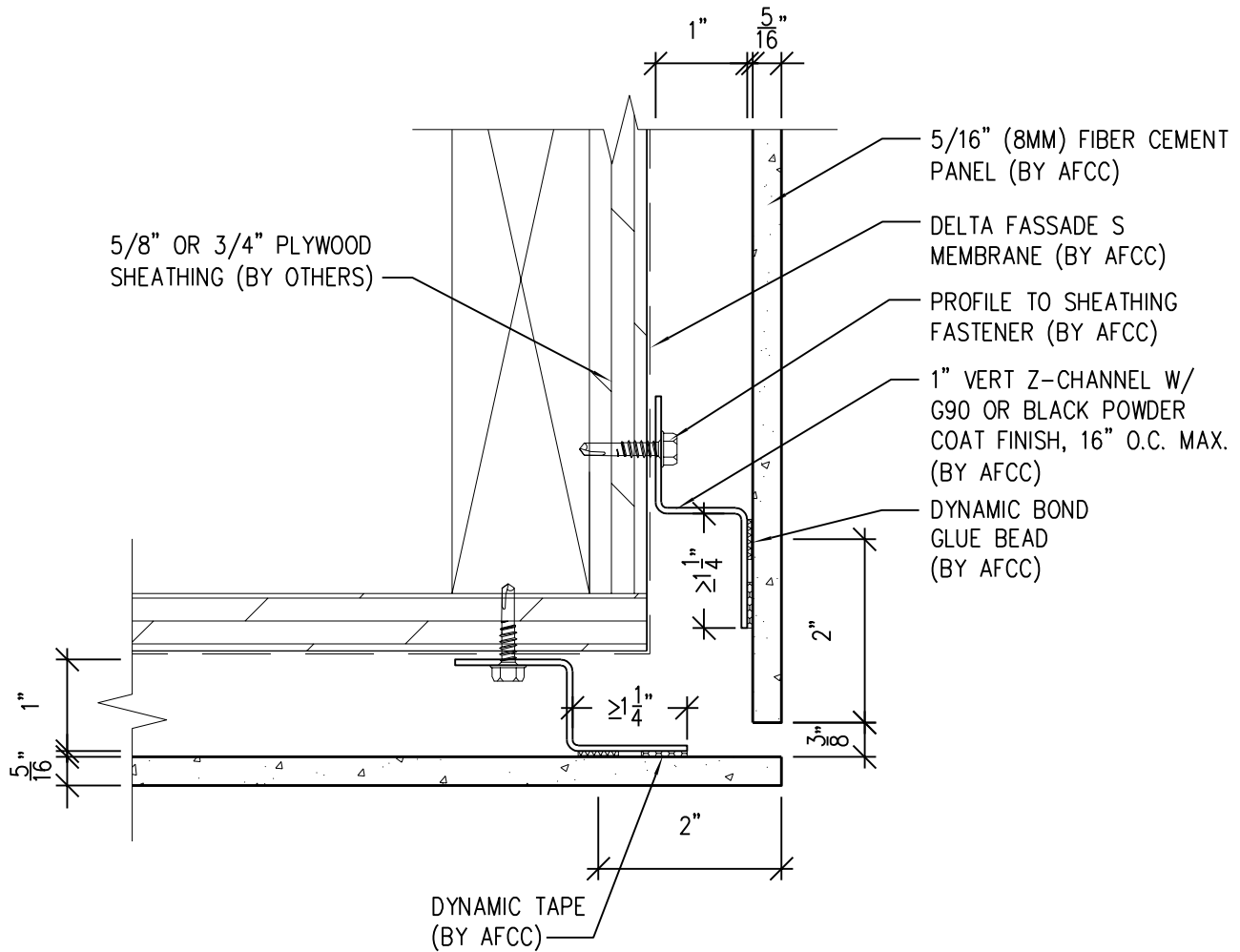
Panel Edge @  
Butt Joint

Date: 11/26/2021



# One-Layer Steel Attachment System

With Dynamic Bond Adhesive Fastening



SCALE: 6"=1'-0"

**NOTES:**

1. PANEL VERTICAL AND HORIZONTAL JOINT SPACING SHOULD BE 3/8" TYPICAL.



**American Fiber  
Cement Corporation**

(303) 972-5107

[www.americanfibercement.com](http://www.americanfibercement.com)

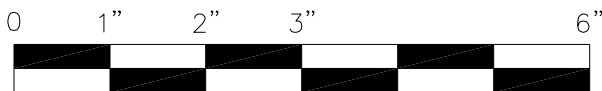
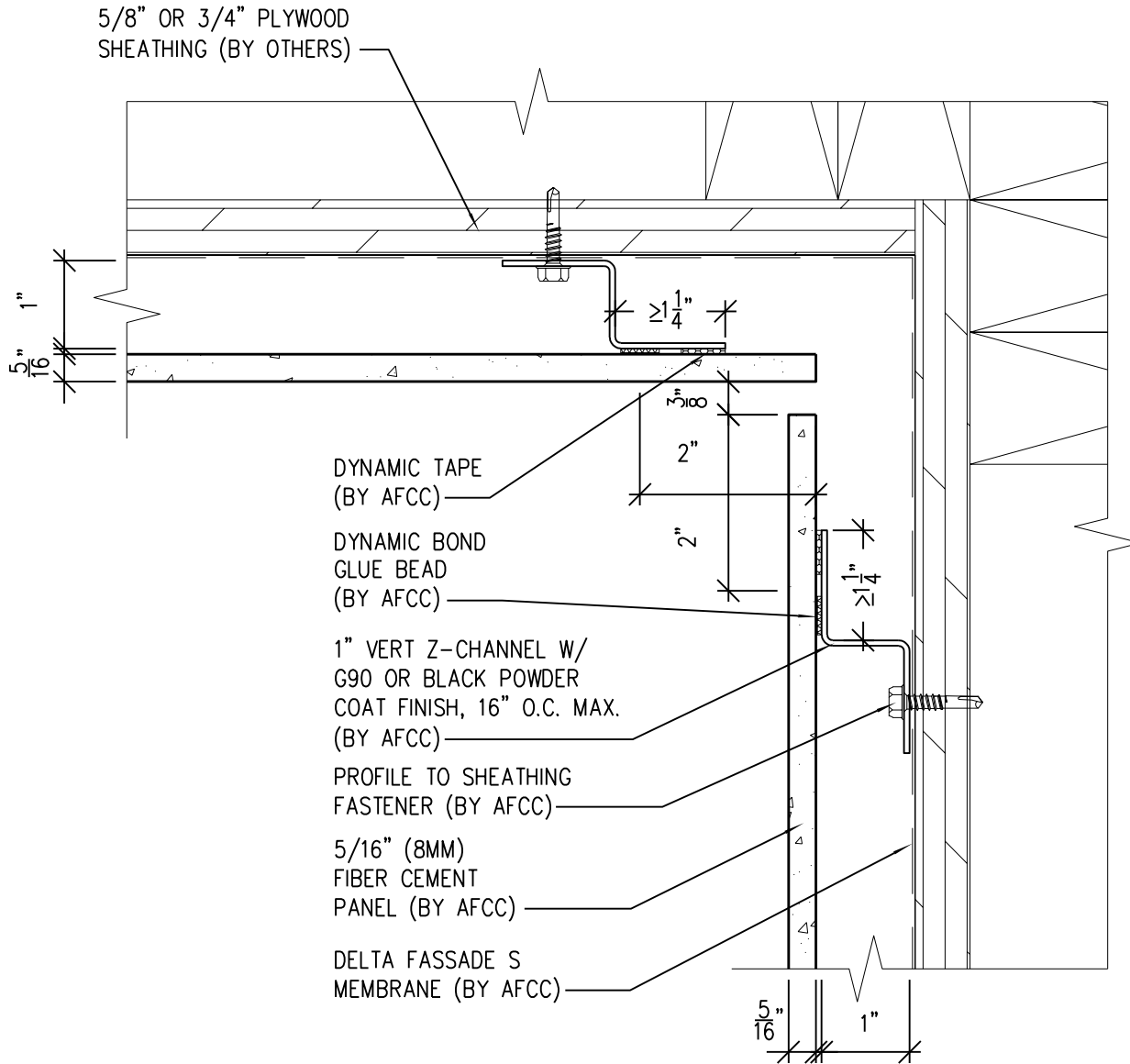
6901 S Pierce St #180, Littleton, CO 80128

Ref.:

**Panels @  
Outside Corner**

Date: 11/26/2021

# One-Layer Steel Attachment System With Dynamic Bond Adhesive Fastening



SCALE: 6" = 1'-0"

**NOTES:**

1. PANEL VERTICAL AND HORIZONTAL JOINT SPACING SHOULD BE 3/8" TYPICAL.



**American Fiber  
Cement Corporation**

(303) 972-5107  
www.americanfibercement.com

6901 S Pierce St #180, Littleton, CO 80128

Ref.:

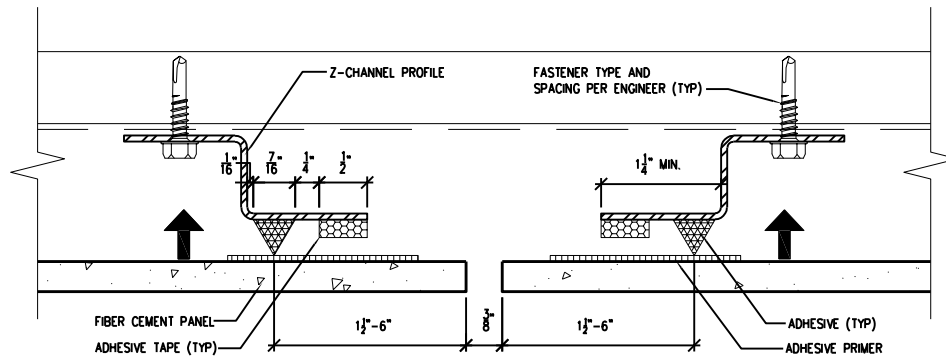
**Panels @  
Inside Corner**

Date: 11/26/2021

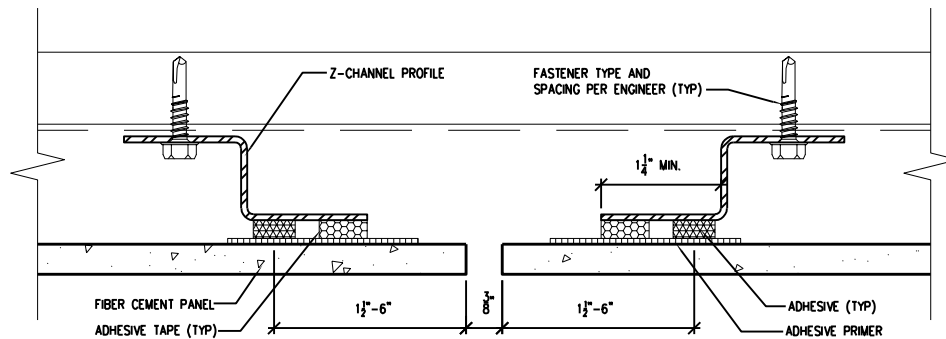
# One-Layer Steel Attachment System With Dynamic Bond Adhesive Fastening

**GENERAL NOTES:**

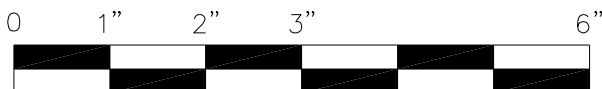
1. WIDTH OF SUPPORTING PROFILE, TO WHICH BONDING SYSTEM WILL BE APPLIED, MUST BE A MINIMUM OF 1 1/4".
2. JOINT IN ALUMINUM/STEEL MUST ALWAYS COINCIDE WITH JOINT IN FIBER CEMENT CLADDING.
3. SPACING OF  $\phi$  TO  $\phi$  OF VERTICAL Z-CHANNEL SHALL BE DETERMINED BASED ON WIND LOAD. MAXIMUM SPACING IS 16" O.C.
4. SUBSTRATE SHALL BE MINIMUM 2MM MILL FINISH ALUMINUM, 12GA ANODIZED ALUMINUM, OR 16GA G90 UNPAINTED GALVANIZED STEEL.



PRE-ADHESION



POST-ADHESION



SCALE: 6"=1'-0"

**NOTES:**

1. PANEL VERTICAL AND HORIZONTAL JOINT SPACING SHOULD BE 3/8" TYPICAL.



**American Fiber  
Cement Corporation**

(303) 972-5107

[www.americanfibercement.com](http://www.americanfibercement.com)

6901 S Pierce St #180, Littleton, CO 80128

Ref.:

**Dynamic Bond  
Typ. Detail**

Date: 11/26/2021