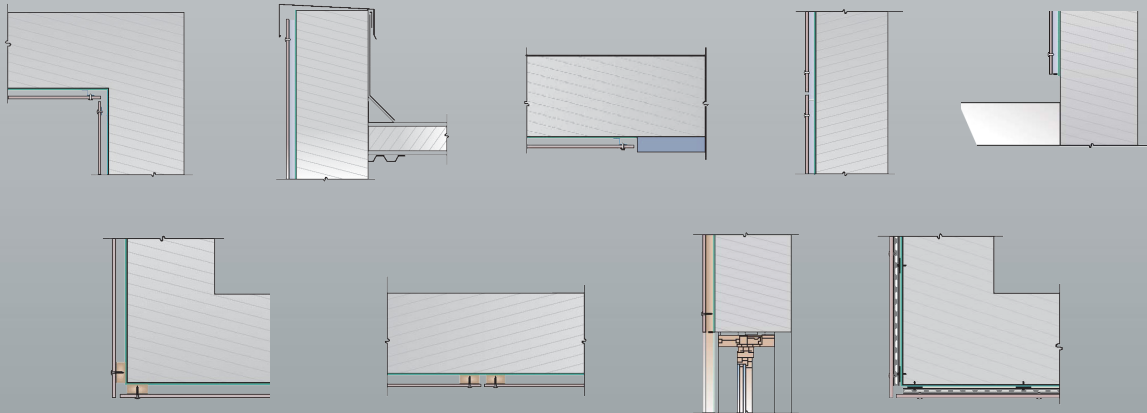


## One-Layer Wood Attachment System with Adhesive





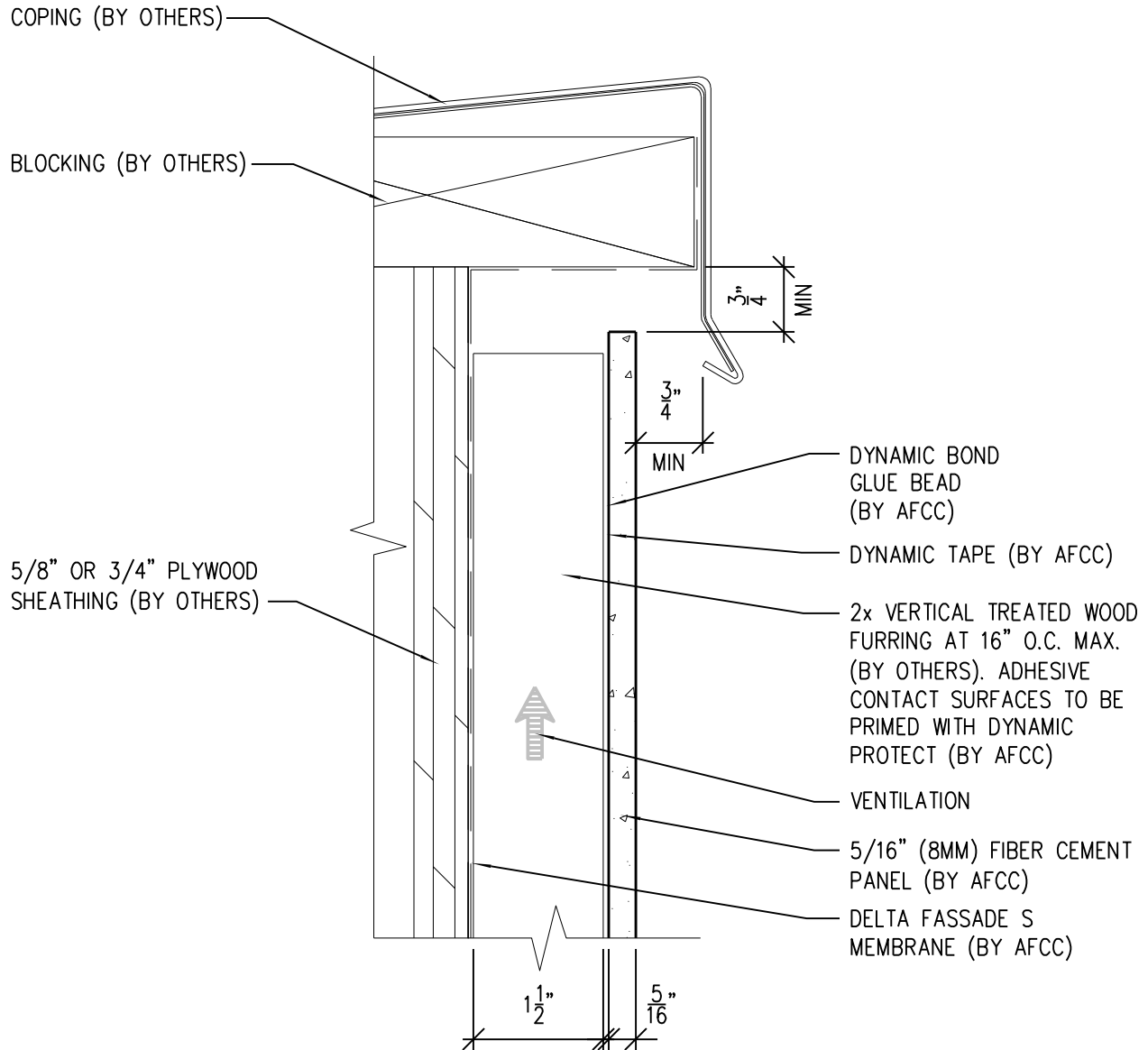
# American Fiber Cement Corporation

## Typical Details

- Page 3: Top Panel @ Coping
- Page 4: Top Panel @ Soffit
- Page 5: Top of Panel @ F.C.P Soffit
- Page 6: Horizontal Joint @ Continuous Substrate
- Page 7: Horizontal Joint @ Break In Substrate
- Page 8: Not Permitted @ Break in Substrate
- Page 9: Bottom of Panel @ Wall Base
- Page 10: Bottom of Panel @ Open Termination
- Page 11: Bottom of Panel @ Low Roof Flashing
- Page 12: Bottom of Panel @ Soffit
- Page 13: Bottom of Panel @ Soffit (Alternate)
- Page 14: Bottom of Panel @ F.C.P Soffit
- Page 15: Bottom of Panel @ F.C.P Soffit (Alternate)
- Page 16: Soffit Termination @ Adjacent Material
- Page 17: Bottom of Panel @ Window Head
- Page 18: Bottom of Panel @ Window Head (Alternate)
- Page 19: Top of Panel @ Window Sill
- Page 20: Panel Edge @ Window Jamb
- Page 21: Panel Edge @ Window Jamb (Alternate)
- Page 22: Vertical Panel Joint Option 1
- Page 23: Vertical Panel Joint Option 2
- Page 24: Panel Edge @ Butt Joint
- Page 25: Panels @ Outside Corner
- Page 26: Panels @ Inside Corner
- Page 27: Dynamic Bond Typical Detail

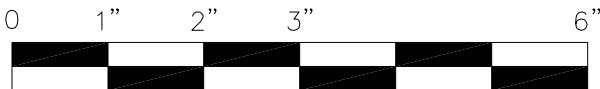
# One-Layer Wood Attachment System

## With Dynamic Bond Adhesive Fastening



**NOTES:**

1. PANEL VERTICAL AND HORIZONTAL JOINT SPACING SHOULD BE 3/8" TYPICAL.
2. FOR VERTICAL PANEL RUNS OF 20FT OR LESS, 1x2 OR 1x4 (3/4" DEPTH) VERTICAL FURRING MAY BE USED INSTEAD OF STANDARD 2x2 OR 2x4 (1 1/2" DEPTH).



SCALE: 6" = 1'-0"



**American Fiber  
Cement Corporation**

(303) 972-5107

[www.americanfibercement.com](http://www.americanfibercement.com)

6901 S Pierce St #180, Littleton, CO 80128

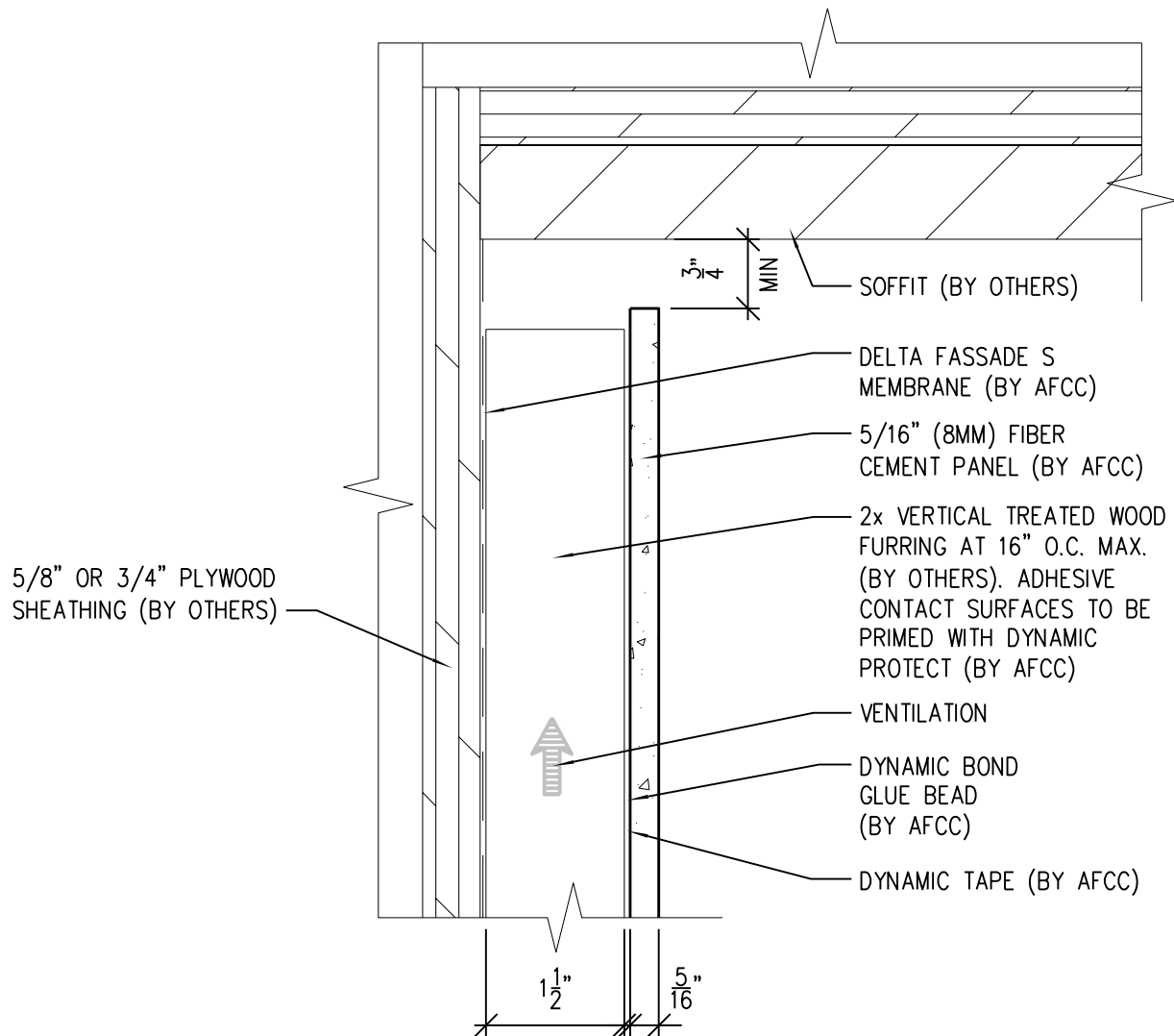
Ref.:

Top of Panel @  
Coping

Date: 11/26/2021

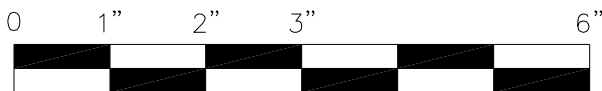
# One-Layer Wood Attachment System

## With Dynamic Bond Adhesive Fastening



### NOTES:

1. PANEL VERTICAL AND HORIZONTAL JOINT SPACING SHOULD BE 3/8" TYPICAL.
2. FOR VERTICAL PANEL RUNS OF 20FT OR LESS, 1x2 OR 1x4 (3/4" DEPTH) VERTICAL FURRING MAY BE USED INSTEAD OF STANDARD 2x2 OR 2x4 (1 1/2" DEPTH).



SCALE: 6" = 1'-0"



**American Fiber  
Cement Corporation**

(303) 972-5107

[www.americanfibercement.com](http://www.americanfibercement.com)

6901 S Pierce St #180, Littleton, CO 80128

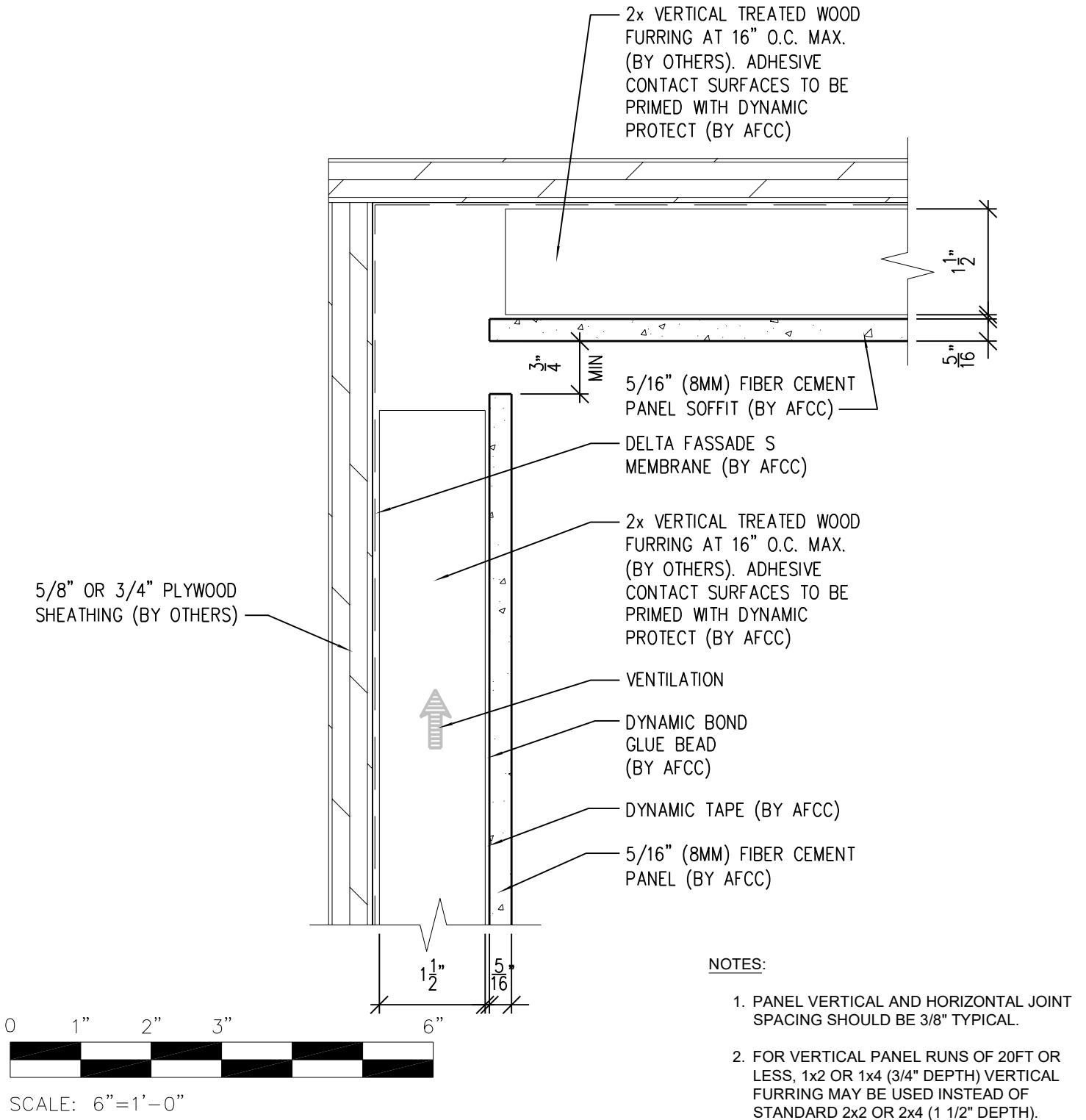
Ref.:

Top of Panel @  
Soffit

Date: 11/26/2021

# One-Layer Wood Attachment System

## With Dynamic Bond Adhesive Fastening



**American Fiber Cement Corporation** (303) 972-5107  
[www.americanfibercement.com](http://www.americanfibercement.com)

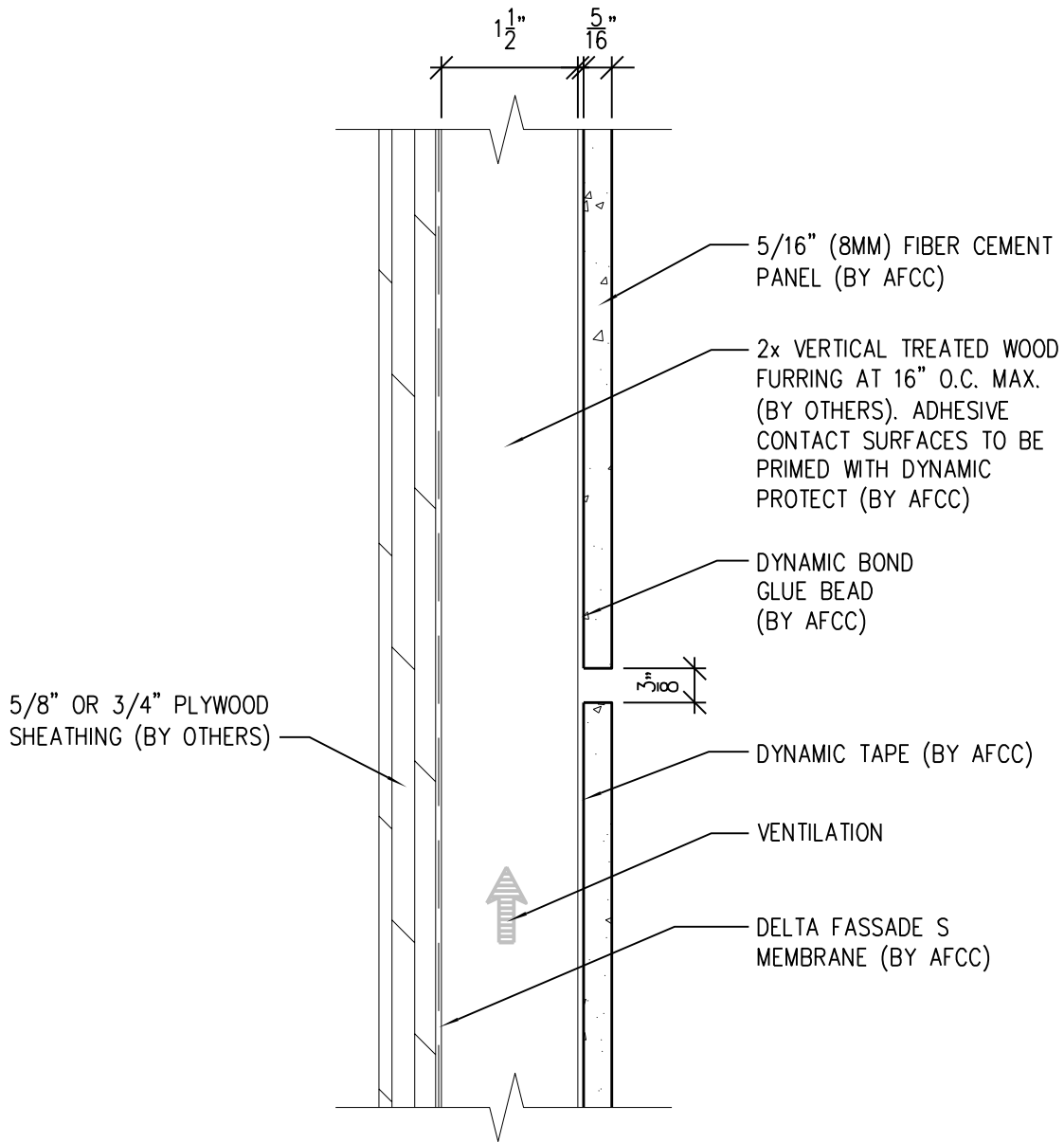
6901 S Pierce St #180, Littleton, CO 80128

Ref.:  
 Top of Panel @  
 F.C.P. Soffit

Date: 11/26/2021

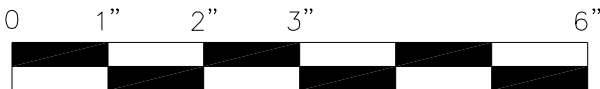
# One-Layer Wood Attachment System

With Dynamic Bond Adhesive Fastening



**NOTES:**

1. PANEL VERTICAL AND HORIZONTAL JOINT SPACING SHOULD BE 3/8" TYPICAL.
2. FOR VERTICAL PANEL RUNS OF 20FT OR LESS, 1x2 OR 1x4 (3/4" DEPTH) VERTICAL FURRING MAY BE USED INSTEAD OF STANDARD 2x2 OR 2x4 (1 1/2" DEPTH).



SCALE: 6" = 1'-0"



**American Fiber  
Cement Corporation**

(303) 972-5107

[www.americanfibercement.com](http://www.americanfibercement.com)

6901 S Pierce St #180, Littleton, CO 80128

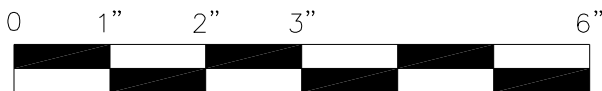
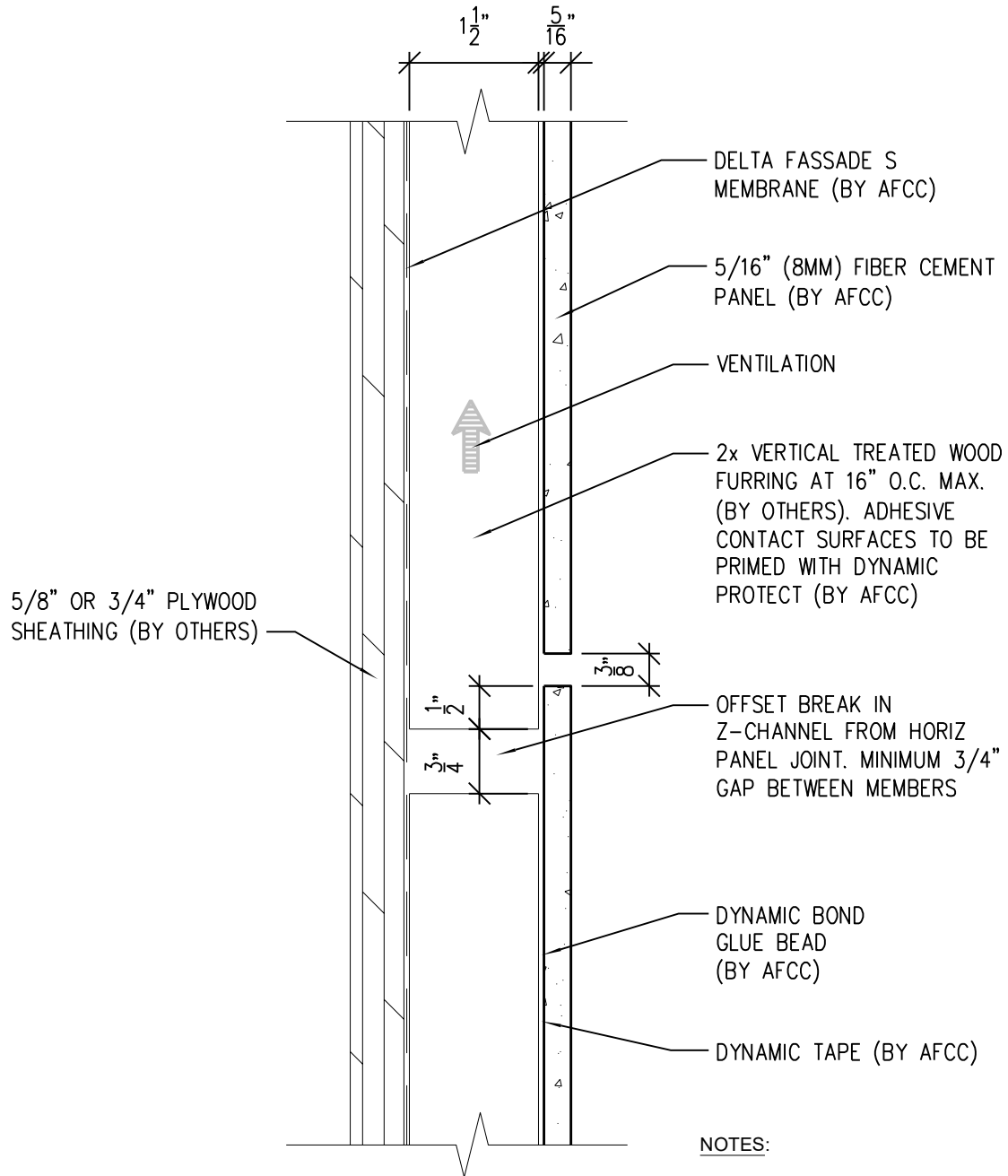
Ref.:

Horizontal Joint @  
Continuous Substrate

Date: 11/26/2021

# One-Layer Wood Attachment System

With Dynamic Bond Adhesive Fastening



SCALE: 6"=1'-0"

1. PANEL VERTICAL AND HORIZONTAL JOINT SPACING SHOULD BE 3/8" TYPICAL.
2. FOR VERTICAL PANEL RUNS OF 20FT OR LESS, 1x2 OR 1x4 (3/4" DEPTH) VERTICAL FURRING MAY BE USED INSTEAD OF STANDARD 2x2 OR 2x4 (1 1/2" DEPTH).



**American Fiber  
Cement Corporation**

(303) 972-5107

[www.americanfibercement.com](http://www.americanfibercement.com)

6901 S Pierce St #180, Littleton, CO 80128

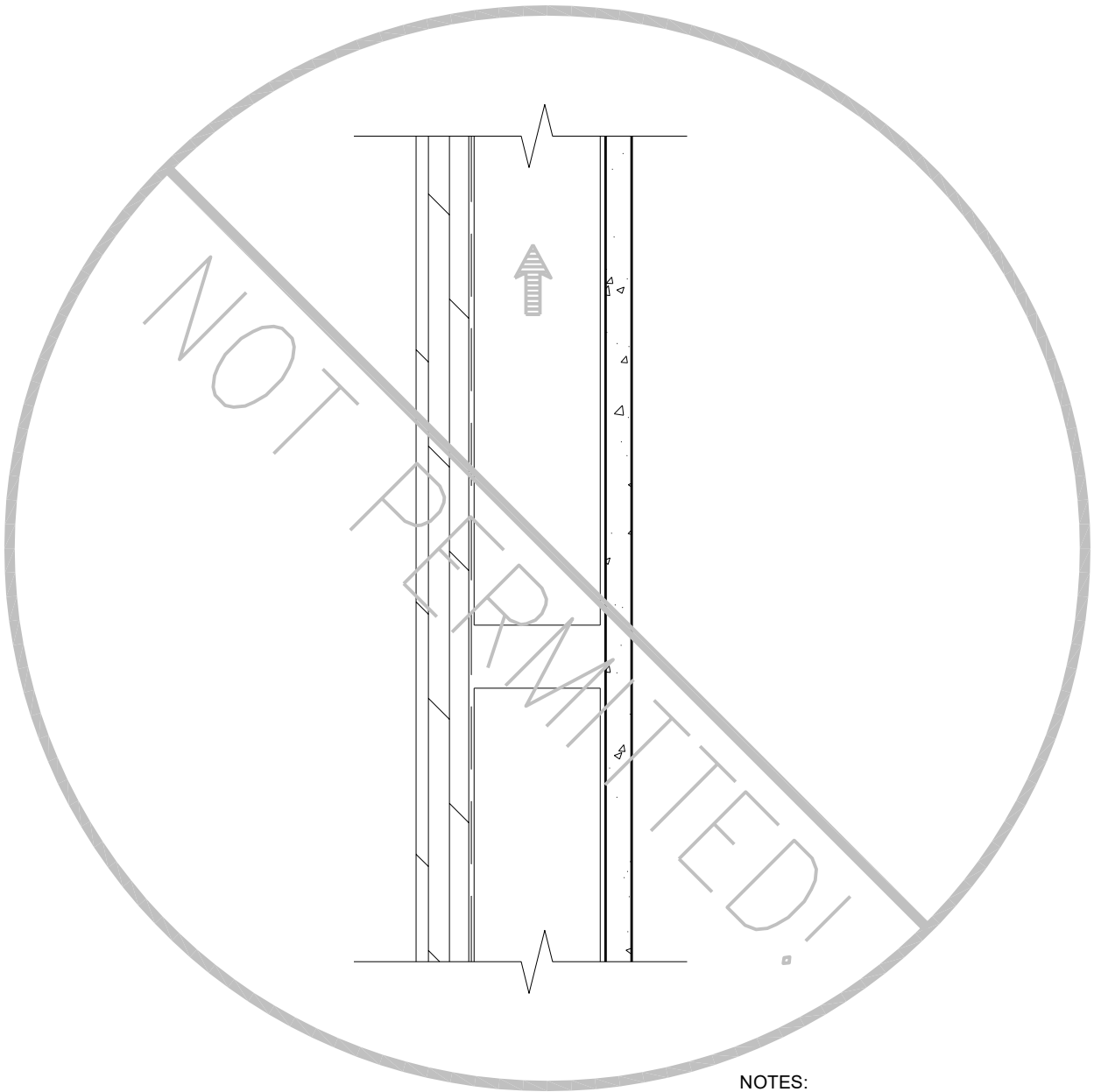
Ref.:

**Horizontal Joint @  
Break in Substrate**

Date: 11/26/2021

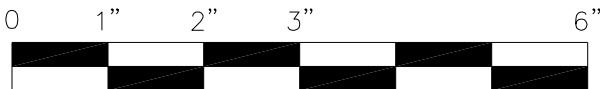
# One-Layer Wood Attachment System

With Dynamic Bond Adhesive Fastening



**NOTES:**

1. PANEL VERTICAL AND HORIZONTAL JOINT SPACING SHOULD BE 3/8" TYPICAL.
2. FOR VERTICAL PANEL RUNS OF 20FT OR LESS, 1x2 OR 1x4 (3/4" DEPTH) VERTICAL FURRING MAY BE USED INSTEAD OF STANDARD 2x2 OR 2x4 (1 1/2" DEPTH).



SCALE: 6"=1'-0"



**American Fiber  
Cement Corporation**

(303) 972-5107

[www.americanfibercement.com](http://www.americanfibercement.com)

6901 S Pierce St #180, Littleton, CO 80128

Ref.:

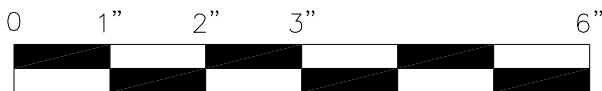
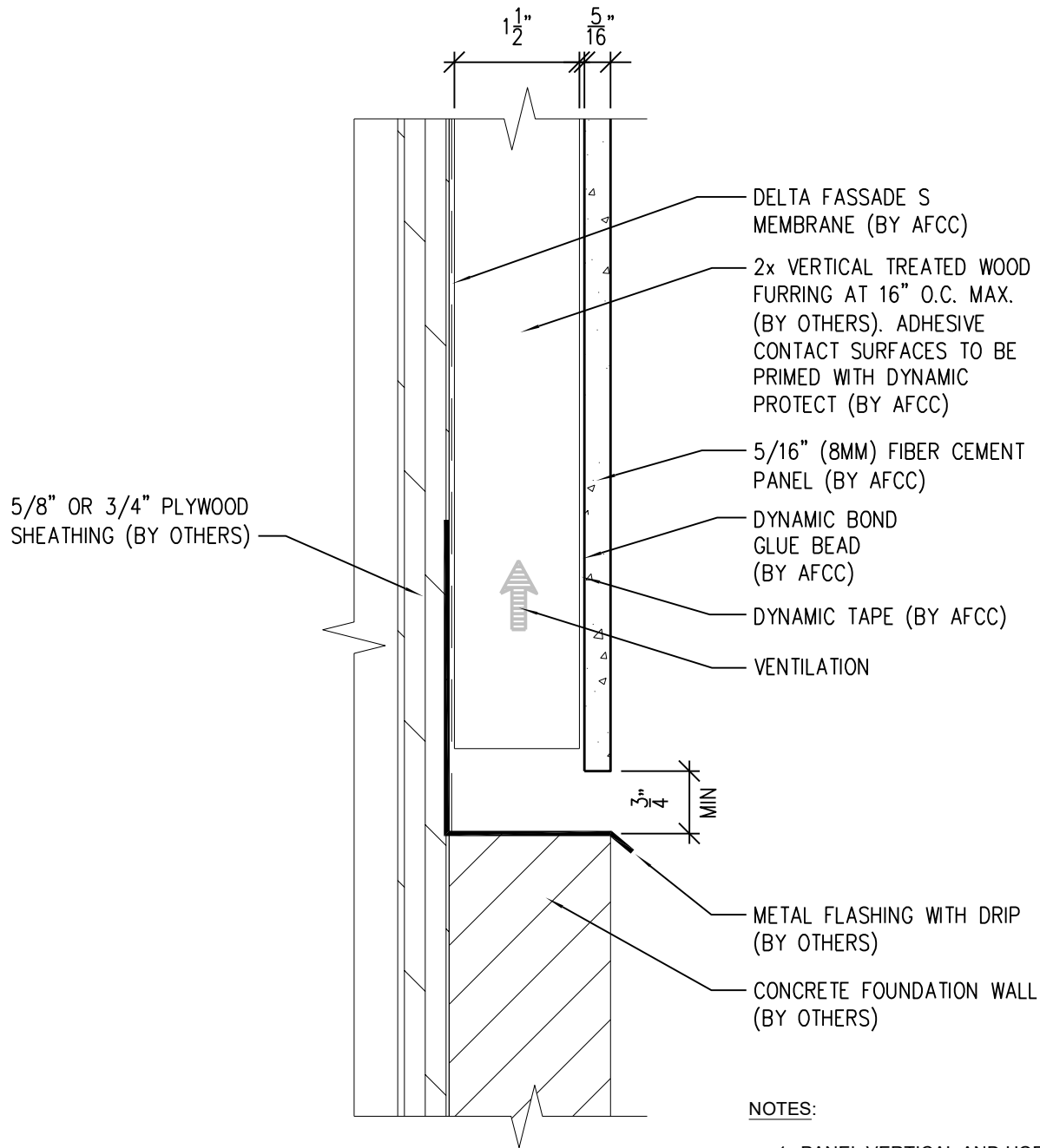
**Not Permitted @  
Break in Substrate**

Date: 11/26/2021



# One-Layer Wood Attachment System

## With Dynamic Bond Adhesive Fastening



SCALE: 6" = 1'-0"

- PANEL VERTICAL AND HORIZONTAL JOINT SPACING SHOULD BE 3/8" TYPICAL.
- FOR VERTICAL PANEL RUNS OF 20FT OR LESS, 1x2 OR 1x4 (3/4" DEPTH) VERTICAL FURRING MAY BE USED INSTEAD OF STANDARD 2x2 OR 2x4 (1 1/2" DEPTH).



**American Fiber  
Cement Corporation**

(303) 972-5107

[www.americanfibercement.com](http://www.americanfibercement.com)

6901 S Pierce St #180, Littleton, CO 80128

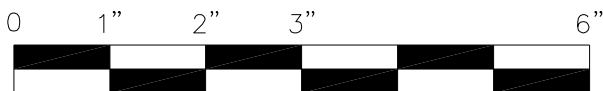
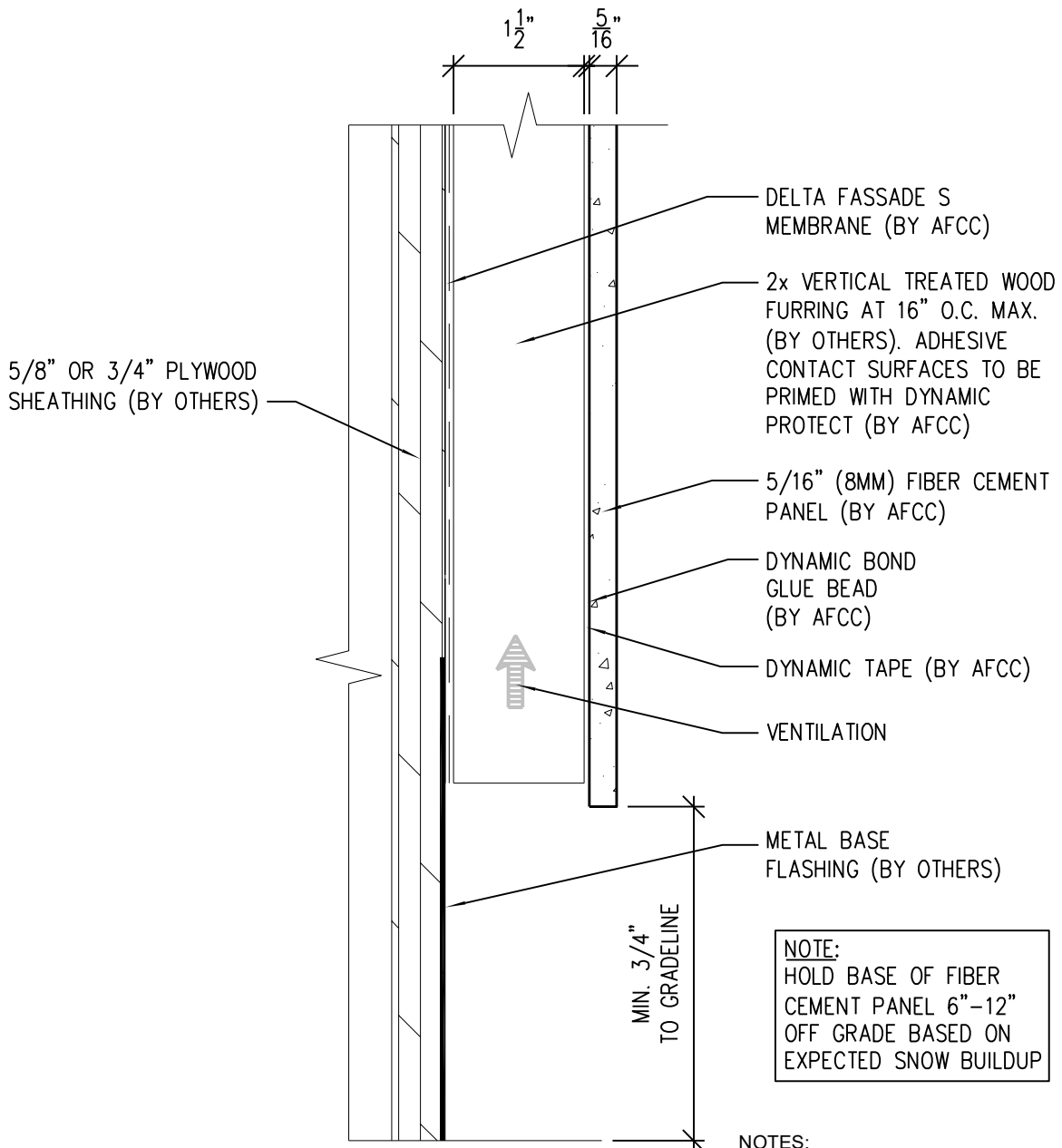
Ref.:

Bottom of Panel @  
Wall Base

Date: 11/26/2021

# One-Layer Wood Attachment System

With Dynamic Bond Adhesive Fastening



SCALE: 6"=1'-0"

1. PANEL VERTICAL AND HORIZONTAL JOINT SPACING SHOULD BE 3/8" TYPICAL.
2. FOR VERTICAL PANEL RUNS OF 20FT OR LESS, 1x2 OR 1x4 (3/4" DEPTH) VERTICAL FURRING MAY BE USED INSTEAD OF STANDARD 2x2 OR 2x4 (1 1/2" DEPTH).



**American Fiber  
Cement Corporation**

(303) 972-5107

[www.americanfibercement.com](http://www.americanfibercement.com)

6901 S Pierce St #180, Littleton, CO 80128

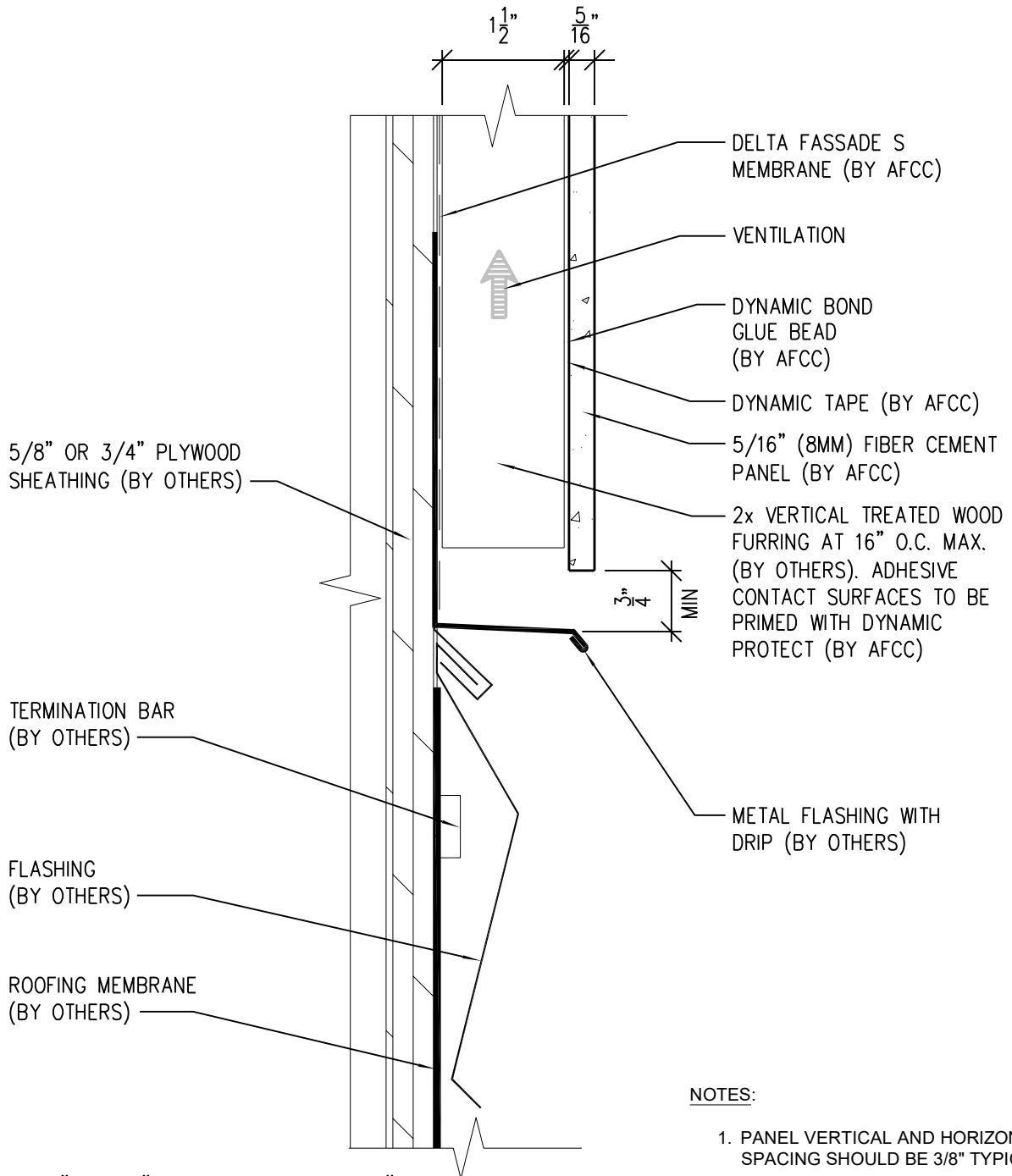
Ref.:

Bottom of Panel @  
Open Termination

Date: 11/26/2021

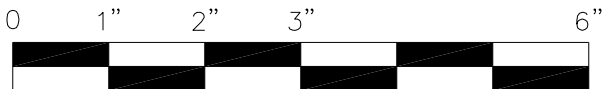
# One-Layer Wood Attachment System

With Dynamic Bond Adhesive Fastening



**NOTES:**

1. PANEL VERTICAL AND HORIZONTAL JOINT SPACING SHOULD BE 3/8" TYPICAL.
2. FOR VERTICAL PANEL RUNS OF 20FT OR LESS, 1x2 OR 1x4 (3/4" DEPTH) VERTICAL FURRING MAY BE USED INSTEAD OF STANDARD 2x2 OR 2x4 (1 1/2" DEPTH).



SCALE: 6"=1'-0"



**American Fiber  
Cement Corporation**

(303) 972-5107

[www.americanfibercement.com](http://www.americanfibercement.com)

6901 S Pierce St #180, Littleton, CO 80128

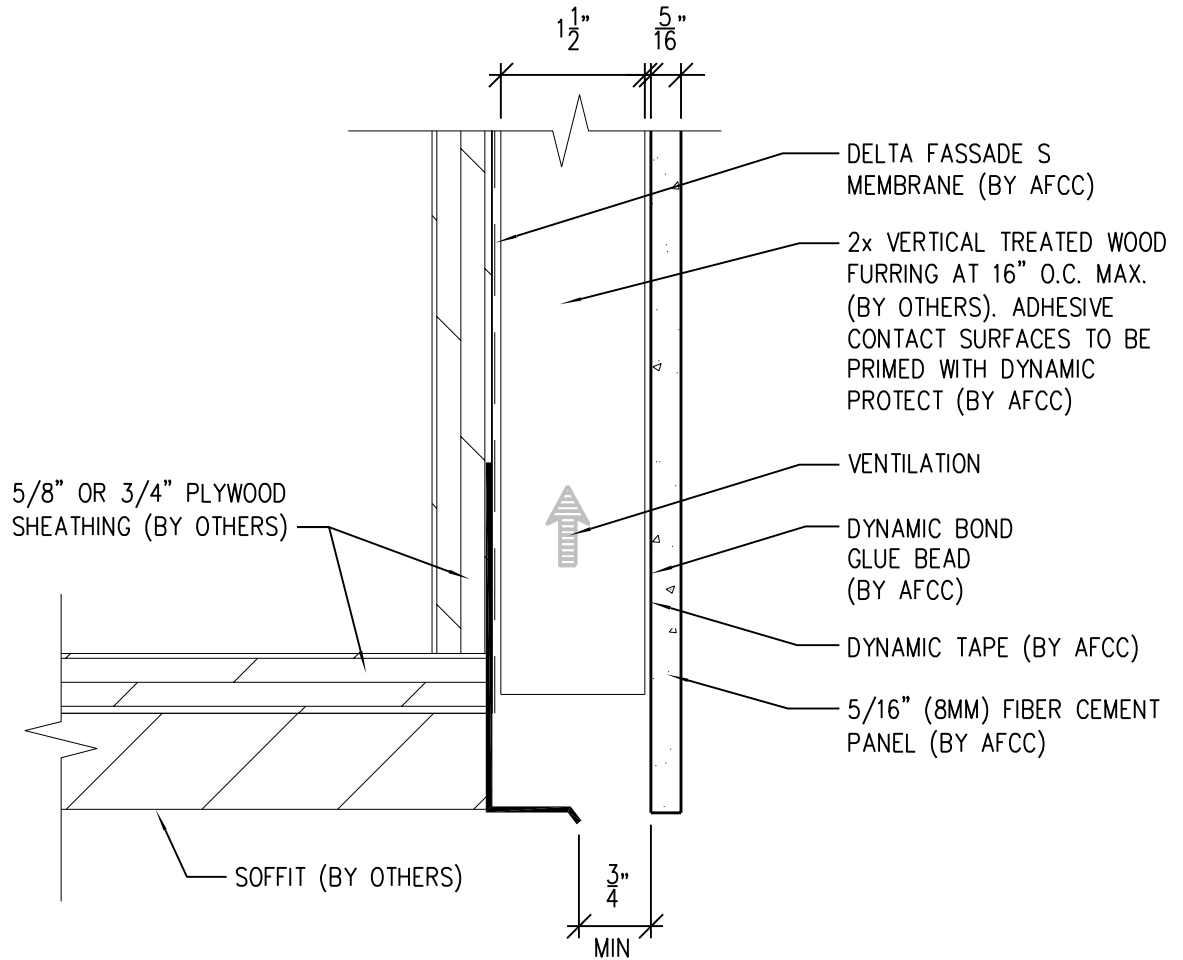
Ref.:

Bottom of Panel @  
Low Roof Flashing

Date: 11/26/2021

# One-Layer Wood Attachment System

With Dynamic Bond Adhesive Fastening



**NOTES:**

1. PANEL VERTICAL AND HORIZONTAL JOINT SPACING SHOULD BE 3/8" TYPICAL.
2. FOR VERTICAL PANEL RUNS OF 20FT OR LESS, 1x2 OR 1x4 (3/4" DEPTH) VERTICAL FURRING MAY BE USED INSTEAD OF STANDARD 2x2 OR 2x4 (1 1/2" DEPTH).



SCALE: 6"=1'-0"



**American Fiber  
Cement Corporation**

(303) 972-5107

[www.americanfibercement.com](http://www.americanfibercement.com)

6901 S Pierce St #180, Littleton, CO 80128

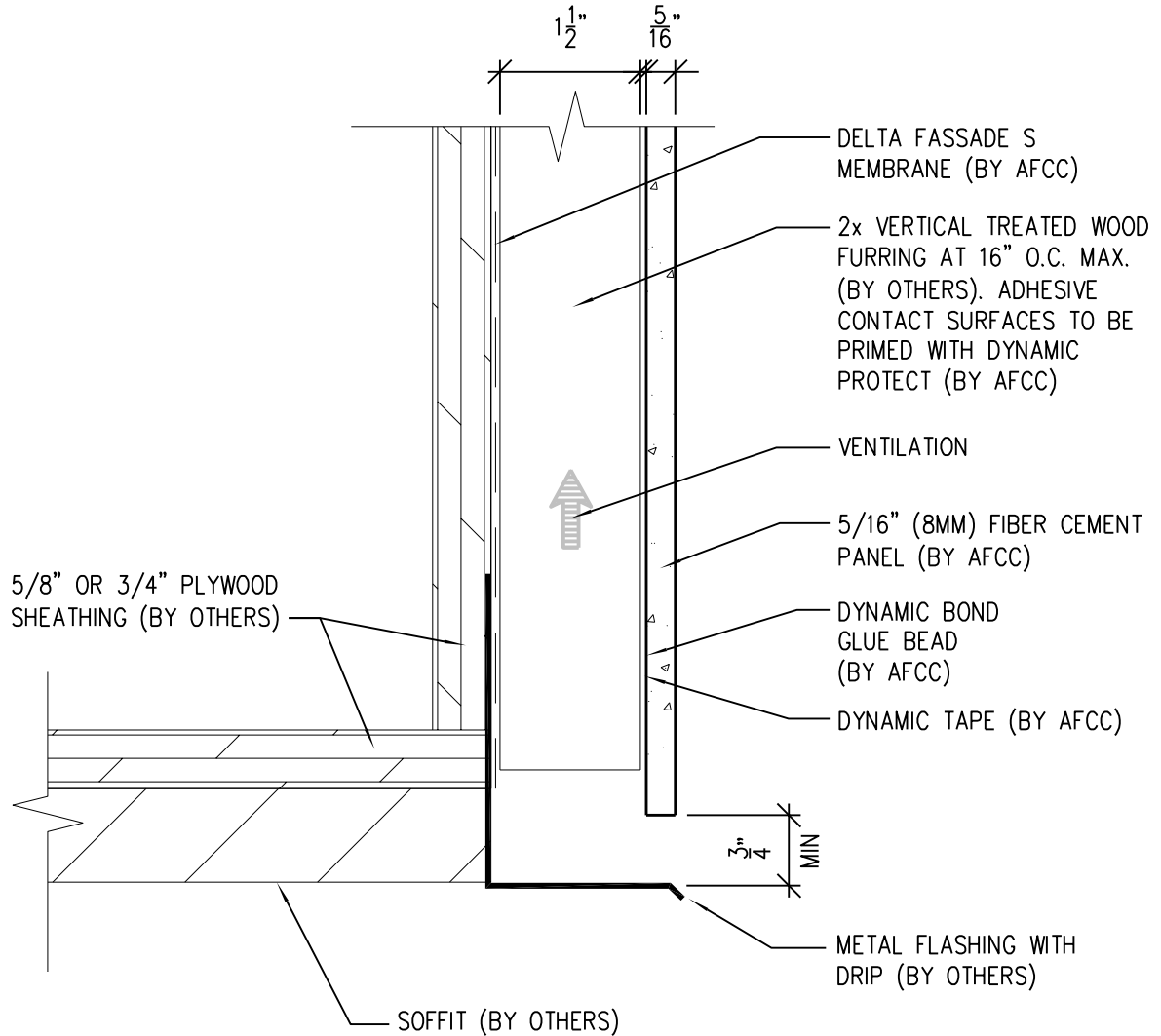
Ref.:

Bottom of Panel @  
Soffit

Date: 11/26/2021

# One-Layer Wood Attachment System

With Dynamic Bond Adhesive Fastening



**NOTES:**

1. PANEL VERTICAL AND HORIZONTAL JOINT SPACING SHOULD BE 3/8" TYPICAL.
2. FOR VERTICAL PANEL RUNS OF 20FT OR LESS, 1x2 OR 1x4 (3/4" DEPTH) VERTICAL FURRING MAY BE USED INSTEAD OF STANDARD 2x2 OR 2x4 (1 1/2" DEPTH).



SCALE: 6"=1'-0"



**American Fiber  
Cement Corporation**

(303) 972-5107

[www.americanfibercement.com](http://www.americanfibercement.com)

6901 S Pierce St #180, Littleton, CO 80128

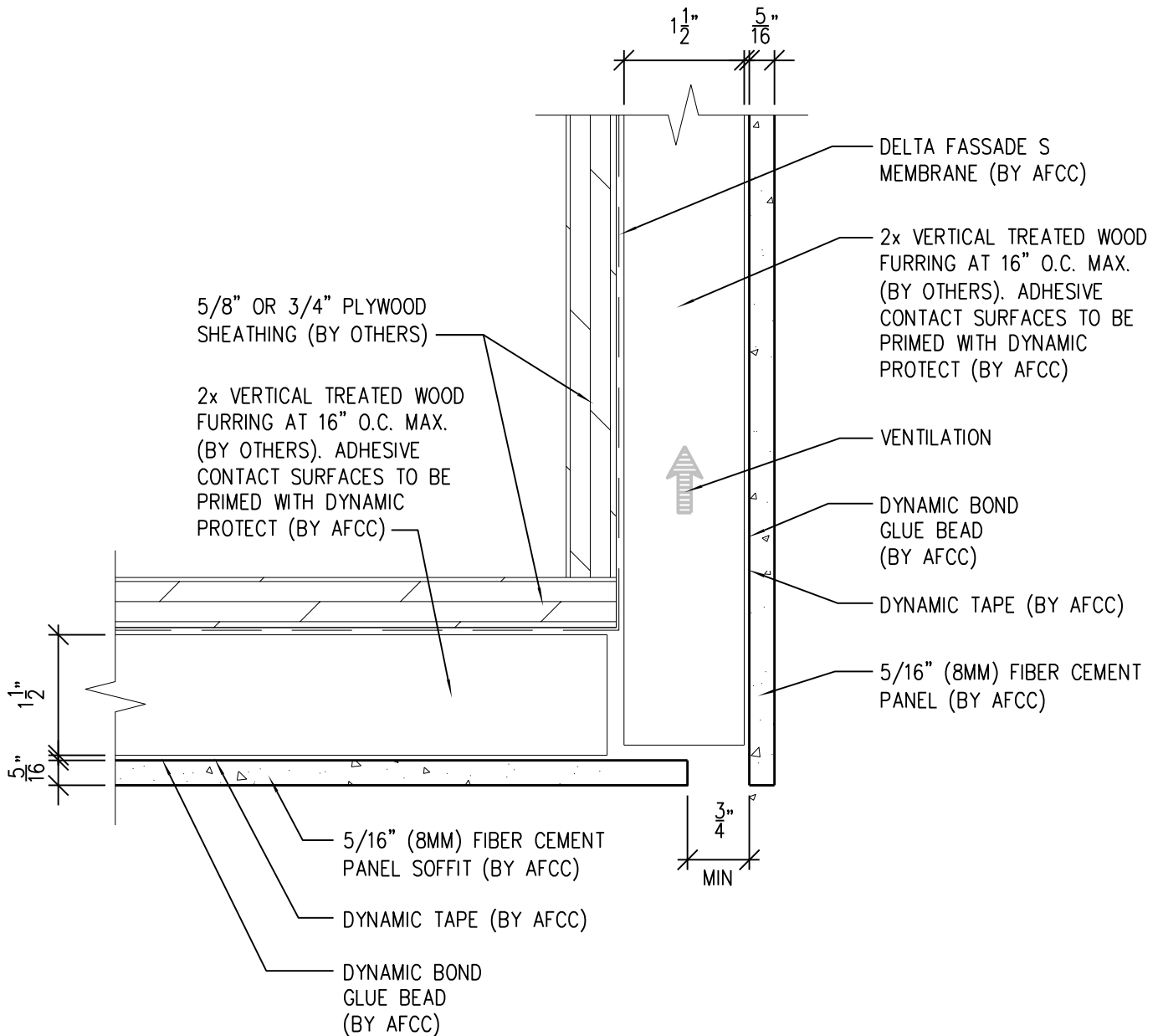
Ref.:

Bottom of Panel @  
Soffit (Alternate)

Date: 11/26/2021

# One-Layer Wood Attachment System

With Dynamic Bond Adhesive Fastening



**NOTES:**

1. PANEL VERTICAL AND HORIZONTAL JOINT SPACING SHOULD BE 3/8" TYPICAL.
2. FOR VERTICAL PANEL RUNS OF 20FT OR LESS, 1x2 OR 1x4 (3/4" DEPTH) VERTICAL FURRING MAY BE USED INSTEAD OF STANDARD 2x2 OR 2x4 (1 1/2" DEPTH).



SCALE: 6"=1'-0"



**American Fiber Cement Corporation** (303) 972-5107  
www.americanfibercement.com

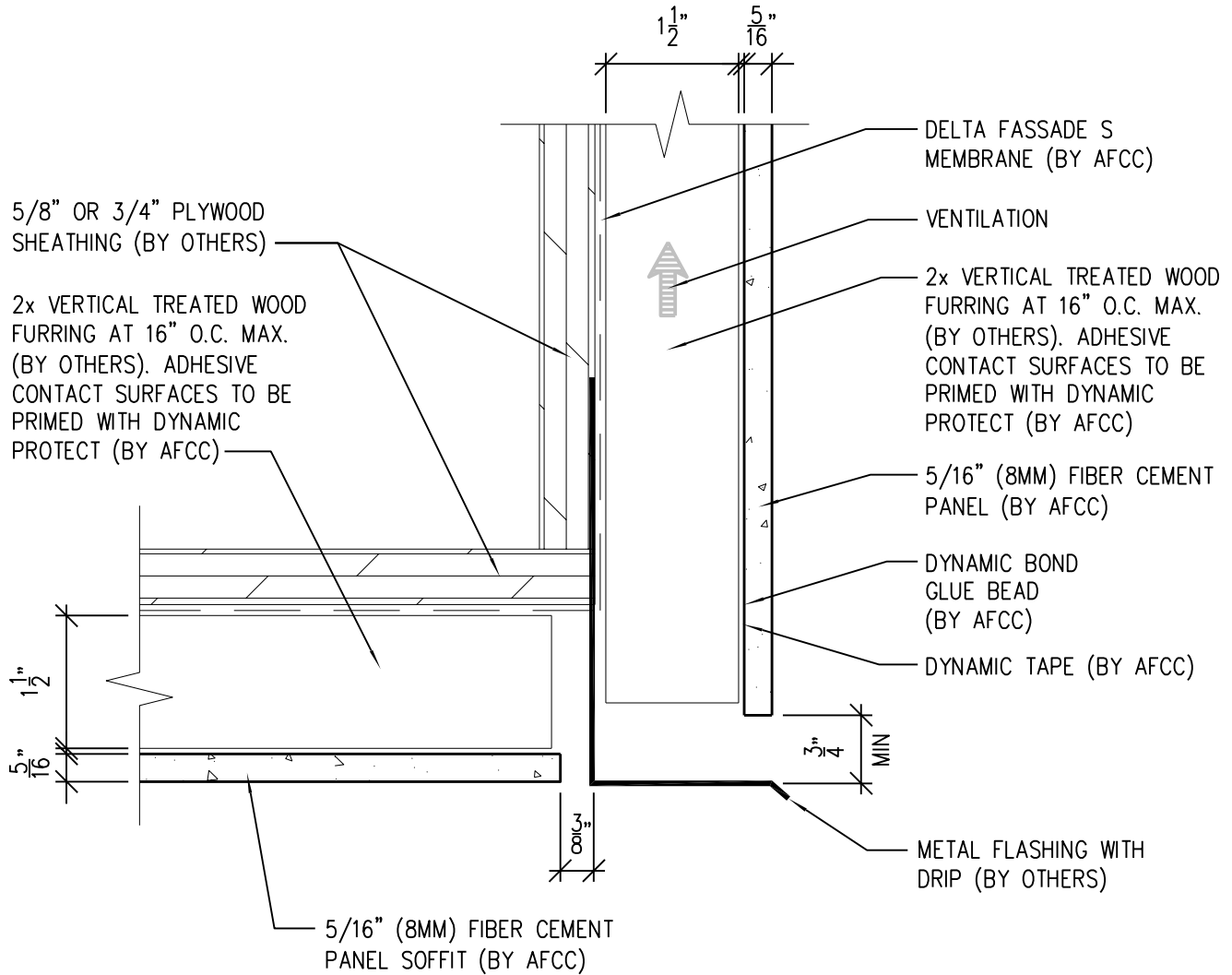
6901 S Pierce St #180, Littleton, CO 80128

Ref.:  
Bottom of Panel @  
F.C.P. Soffit

Date: 11/26/2021

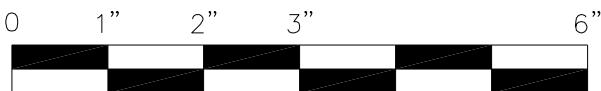
# One-Layer Wood Attachment System

With Dynamic Bond Adhesive Fastening



**NOTES:**

1. PANEL VERTICAL AND HORIZONTAL JOINT SPACING SHOULD BE 3/8" TYPICAL.
2. FOR VERTICAL PANEL RUNS OF 20FT OR LESS, 1x2 OR 1x4 (3/4" DEPTH) VERTICAL FURRING MAY BE USED INSTEAD OF STANDARD 2x2 OR 2x4 (1 1/2" DEPTH).



SCALE: 6"=1'-0"



**American Fiber  
Cement Corporation**

(303) 972-5107

[www.americanfibercement.com](http://www.americanfibercement.com)

6901 S Pierce St #180, Littleton, CO 80128

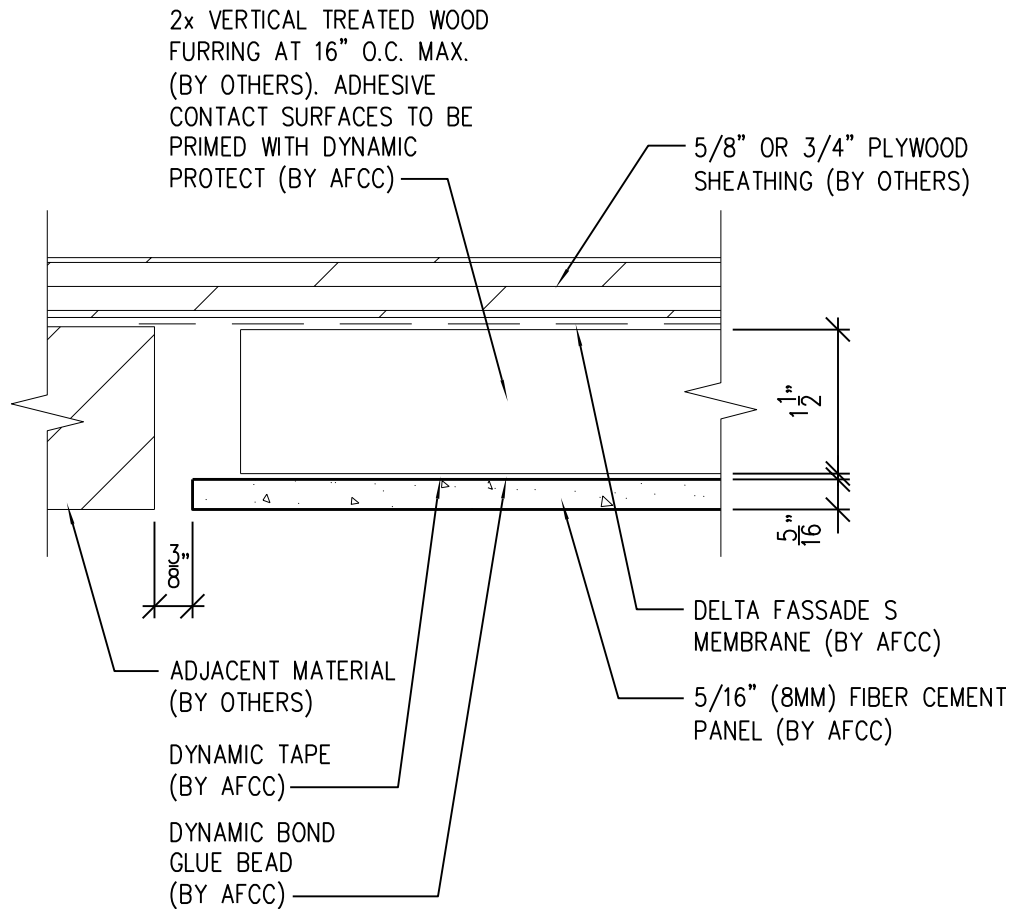
Ref.:

Bottom of Panel @  
F.C.P. Soffit (Alternate)

Date: 11/26/2021

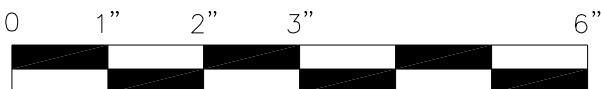
# One-Layer Wood Attachment System

## With Dynamic Bond Adhesive Fastening



### NOTES:

1. PANEL VERTICAL AND HORIZONTAL JOINT SPACING SHOULD BE 3/8" TYPICAL.
2. FOR VERTICAL PANEL RUNS OF 20FT OR LESS, 1x2 OR 1x4 (3/4" DEPTH) VERTICAL FURRING MAY BE USED INSTEAD OF STANDARD 2x2 OR 2x4 (1 1/2" DEPTH).



SCALE: 6"=1'-0"



**American Fiber Cement Corporation** (303) 972-5107  
www.americanfibercement.com

6901 S Pierce St #180, Littleton, CO 80128

Ref.:

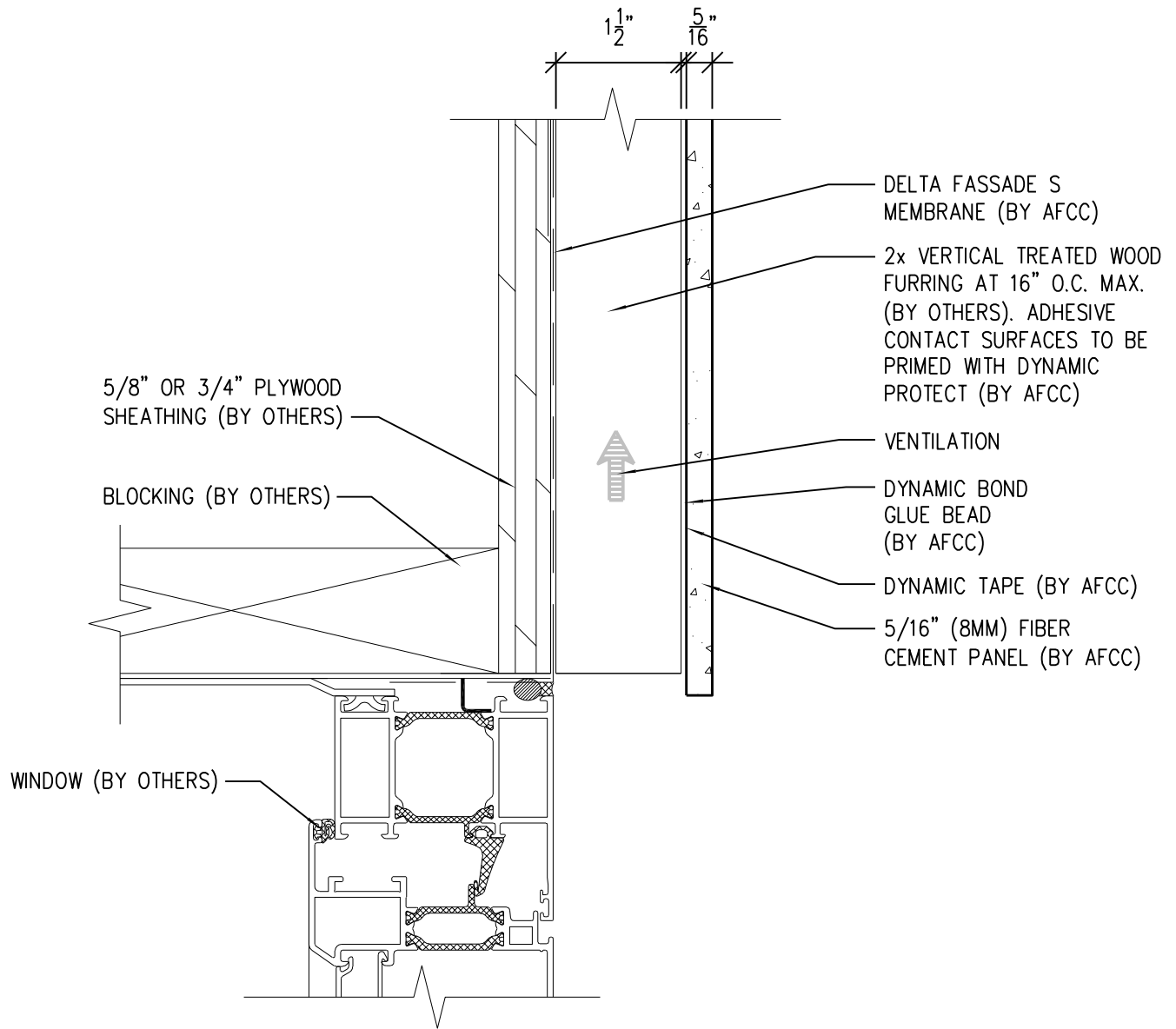
**Soffit Termination @  
Adjacent Material**

Date: 11/26/2021



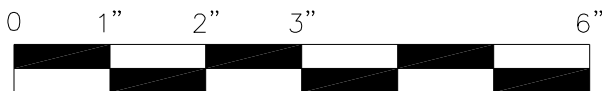
# One-Layer Wood Attachment System

With Dynamic Bond Adhesive Fastening



**NOTES:**

1. PANEL VERTICAL AND HORIZONTAL JOINT SPACING SHOULD BE 3/8" TYPICAL.
2. FOR VERTICAL PANEL RUNS OF 20FT OR LESS, 1x2 OR 1x4 (3/4" DEPTH) VERTICAL FURRING MAY BE USED INSTEAD OF STANDARD 2x2 OR 2x4 (1 1/2" DEPTH).



SCALE: 6" = 1'-0"



**American Fiber  
Cement Corporation**

(303) 972-5107

[www.americanfibercement.com](http://www.americanfibercement.com)

6901 S Pierce St #180, Littleton, CO 80128

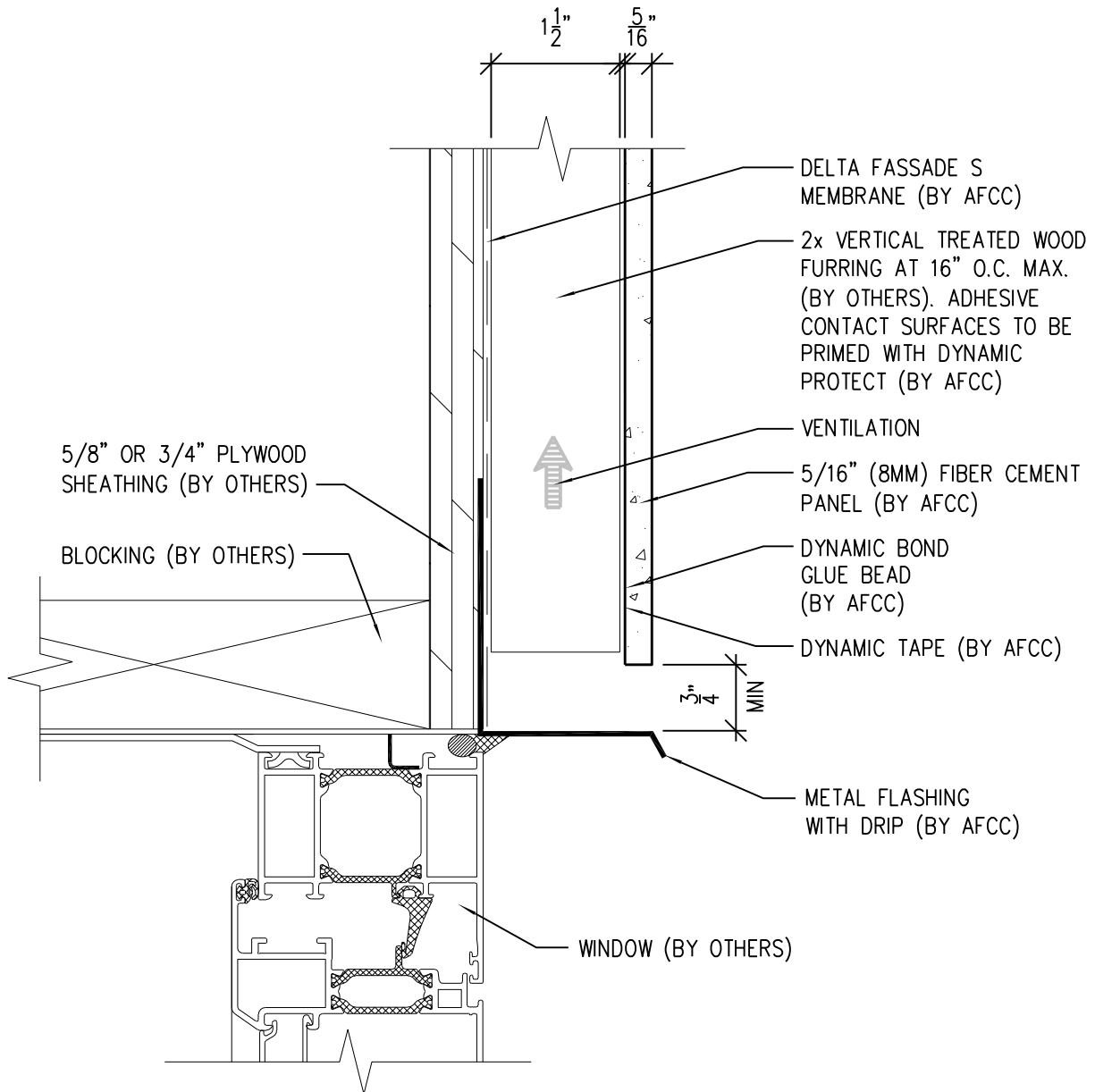
Ref.:

Bottom of Panel @  
Window Head

Date: 11/26/2021

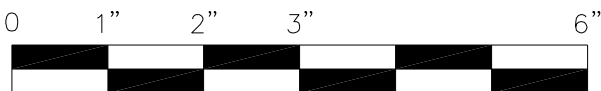
# One-Layer Wood Attachment System

With Dynamic Bond Adhesive Fastening



**NOTES:**

1. PANEL VERTICAL AND HORIZONTAL JOINT SPACING SHOULD BE 3/8" TYPICAL.
2. FOR VERTICAL PANEL RUNS OF 20FT OR LESS, 1x2 OR 1x4 (3/4" DEPTH) VERTICAL FURRING MAY BE USED INSTEAD OF STANDARD 2x2 OR 2x4 (1 1/2" DEPTH).



SCALE: 6"=1'-0"



**American Fiber  
Cement Corporation**

(303) 972-5107

[www.americanfibercement.com](http://www.americanfibercement.com)

6901 S Pierce St #180, Littleton, CO 80128

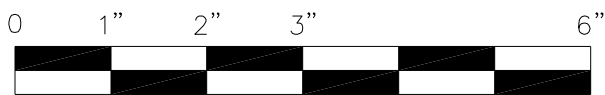
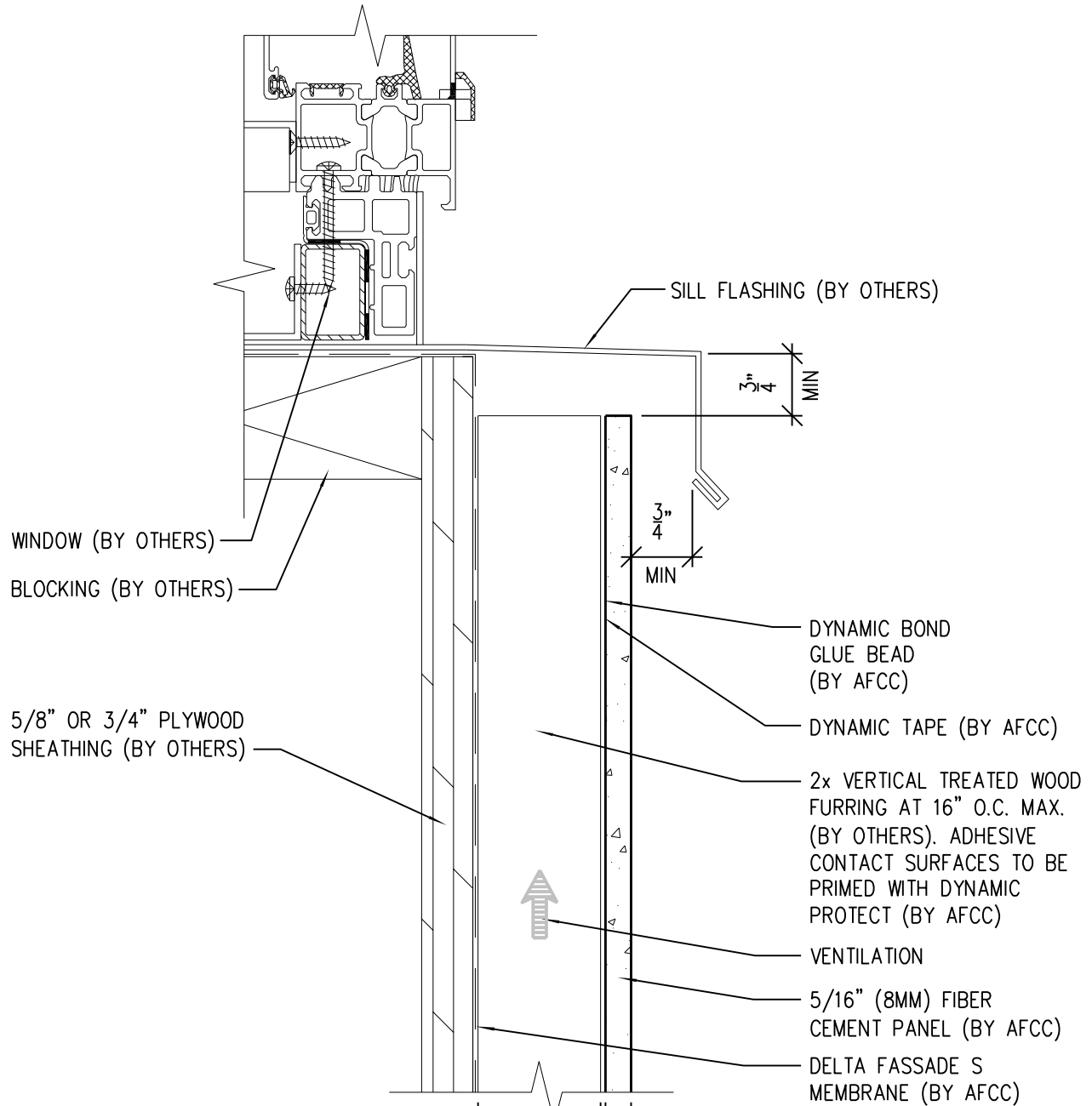
Ref.:

Bottom of Panel @  
Window Head (Alternate)

Date: 11/26/2021

# One-Layer Wood Attachment System

With Dynamic Bond Adhesive Fastening



SCALE: 6" = 1'-0"

**NOTES:**

1. PANEL VERTICAL AND HORIZONTAL JOINT SPACING SHOULD BE 3/8" TYPICAL.
2. FOR VERTICAL PANEL RUNS OF 20FT OR LESS, 1x2 OR 1x4 (3/4" DEPTH) VERTICAL FURRING MAY BE USED INSTEAD OF STANDARD 2x2 OR 2x4 (1 1/2" DEPTH).



**American Fiber Cement Corporation**  
 (303) 972-5107  
[www.americanfibercement.com](http://www.americanfibercement.com)

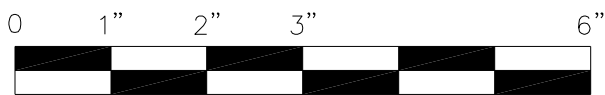
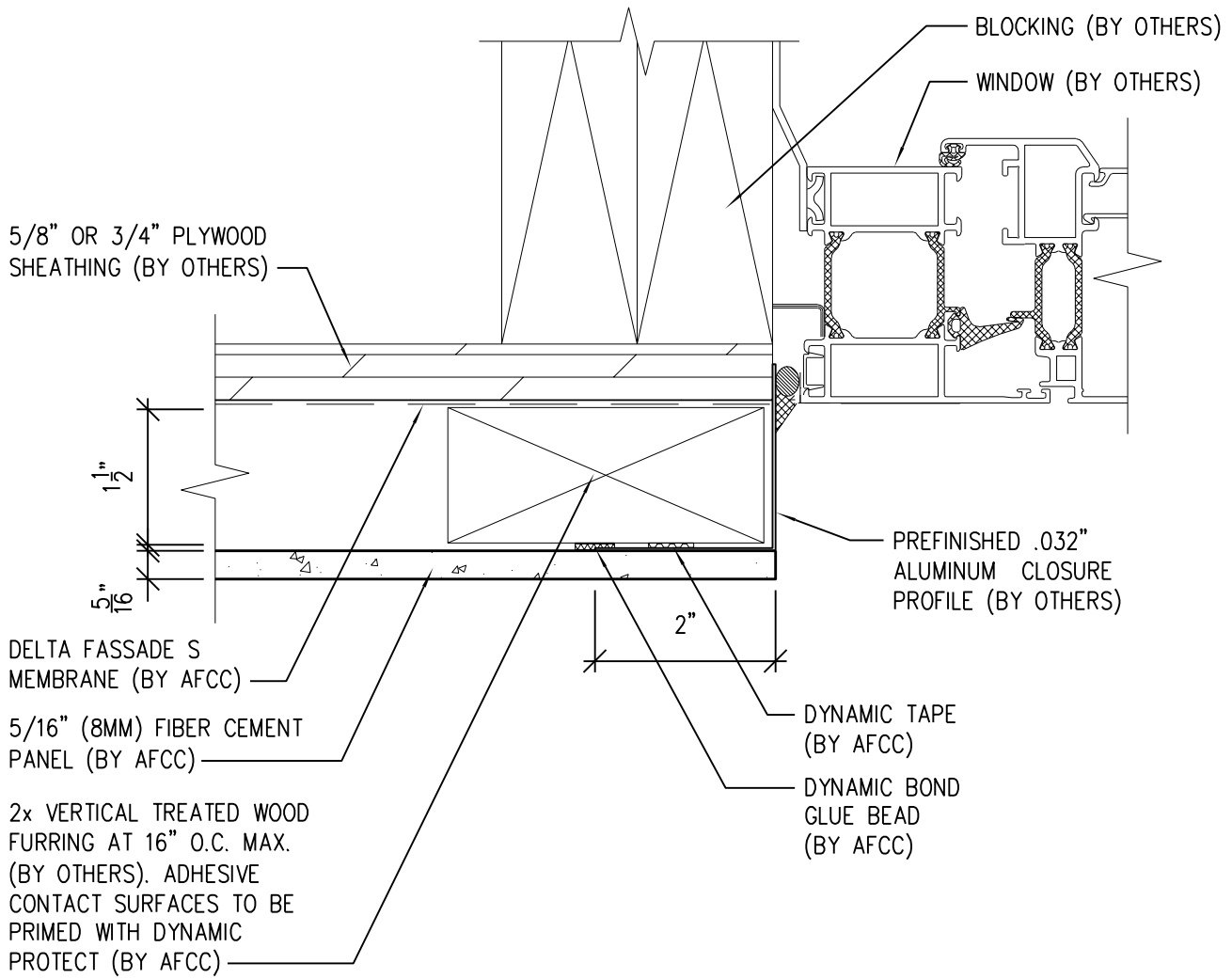
6901 S Pierce St #180, Littleton, CO 80128

Ref.:  
 Top of Panel @  
 Window Sill

Date: 11/26/2021

# One-Layer Wood Attachment System

## With Dynamic Bond Adhesive Fastening



SCALE: 6" = 1'-0"

**NOTES:**

1. PANEL VERTICAL AND HORIZONTAL JOINT SPACING SHOULD BE 3/8" TYPICAL.
2. FOR VERTICAL PANEL RUNS OF 20FT OR LESS, 1x2 OR 1x4 (3/4" DEPTH) VERTICAL FURRING MAY BE USED INSTEAD OF STANDARD 2x2 OR 2x4 (1 1/2" DEPTH).



**American Fiber Cement Corporation** [www.americanfibercement.com](http://www.americanfibercement.com)

(303) 972-5107

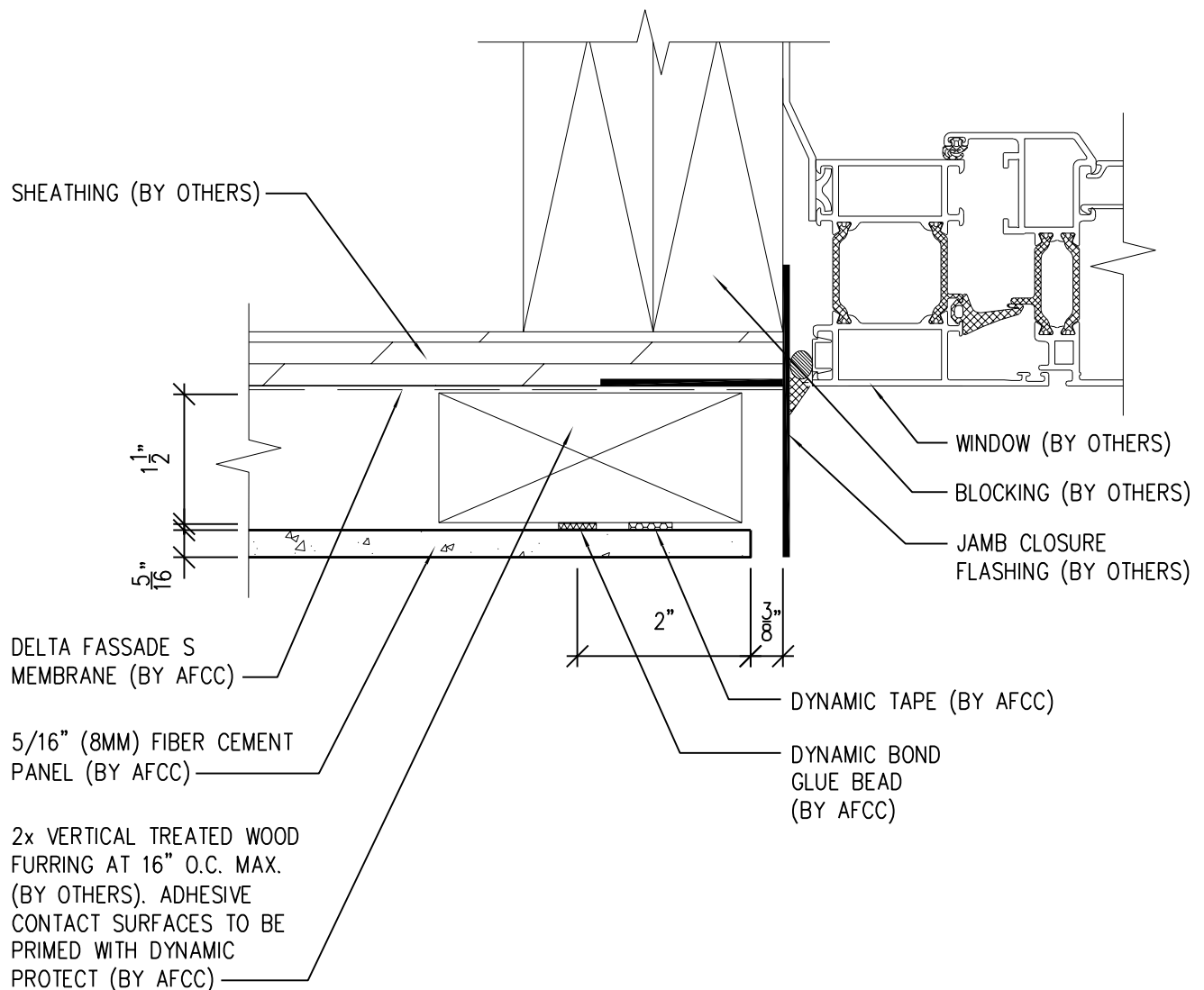
6901 S Pierce St #180, Littleton, CO 80128

Ref.: **Panel Edge @ Window Jamb**

Date: 11/26/2021

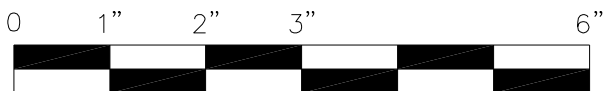
# One-Layer Wood Attachment System

With Dynamic Bond Adhesive Fastening



**NOTES:**

1. PANEL VERTICAL AND HORIZONTAL JOINT SPACING SHOULD BE 3/8" TYPICAL.
2. FOR VERTICAL PANEL RUNS OF 20FT OR LESS, 1x2 OR 1x4 (3/4" DEPTH) VERTICAL FURRING MAY BE USED INSTEAD OF STANDARD 2x2 OR 2x4 (1 1/2" DEPTH).



SCALE: 6"=1'-0"



**American Fiber  
Cement Corporation**

(303) 972-5107

[www.americanfibercement.com](http://www.americanfibercement.com)

6901 S Pierce St #180, Littleton, CO 80128

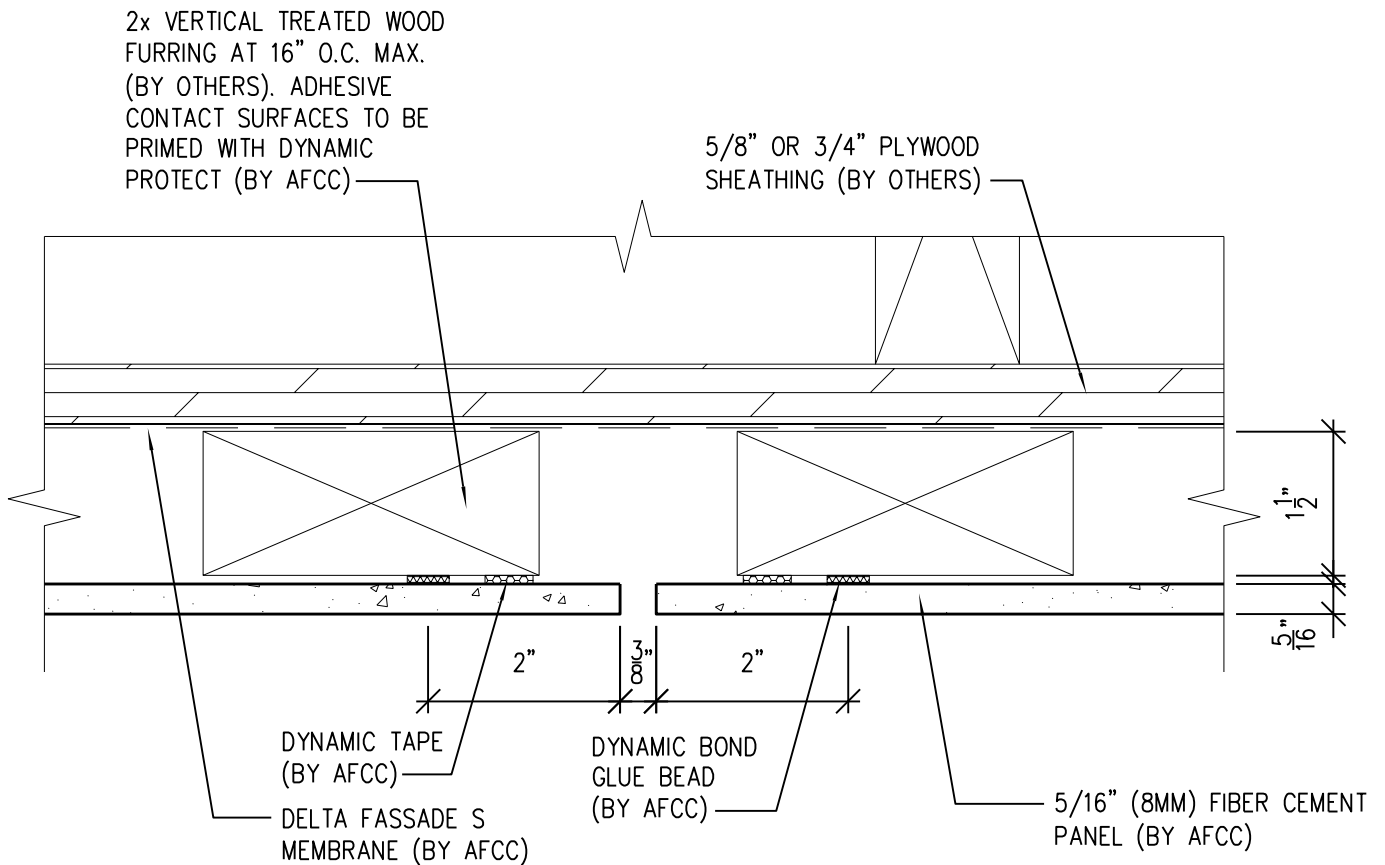
Ref.:

Panel Edge @  
Window Jamb (Alternate)

Date: 11/26/2021

# One-Layer Wood Attachment System

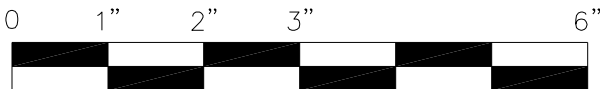
## With Dynamic Bond Adhesive Fastening



**NOTE:**  
THIS DETAIL IS RECOMMENDED AT VERTICAL PANEL JOINTS.

**NOTES:**

1. PANEL VERTICAL AND HORIZONTAL JOINT SPACING SHOULD BE 3/8" TYPICAL.
2. FOR VERTICAL PANEL RUNS OF 20FT OR LESS, 1x2 OR 1x4 (3/4" DEPTH) VERTICAL FURRING MAY BE USED INSTEAD OF STANDARD 2x2 OR 2x4 (1 1/2" DEPTH).



SCALE: 6" = 1'-0"



**American Fiber Cement Corporation** (303) 972-5107  
www.americanfibercement.com

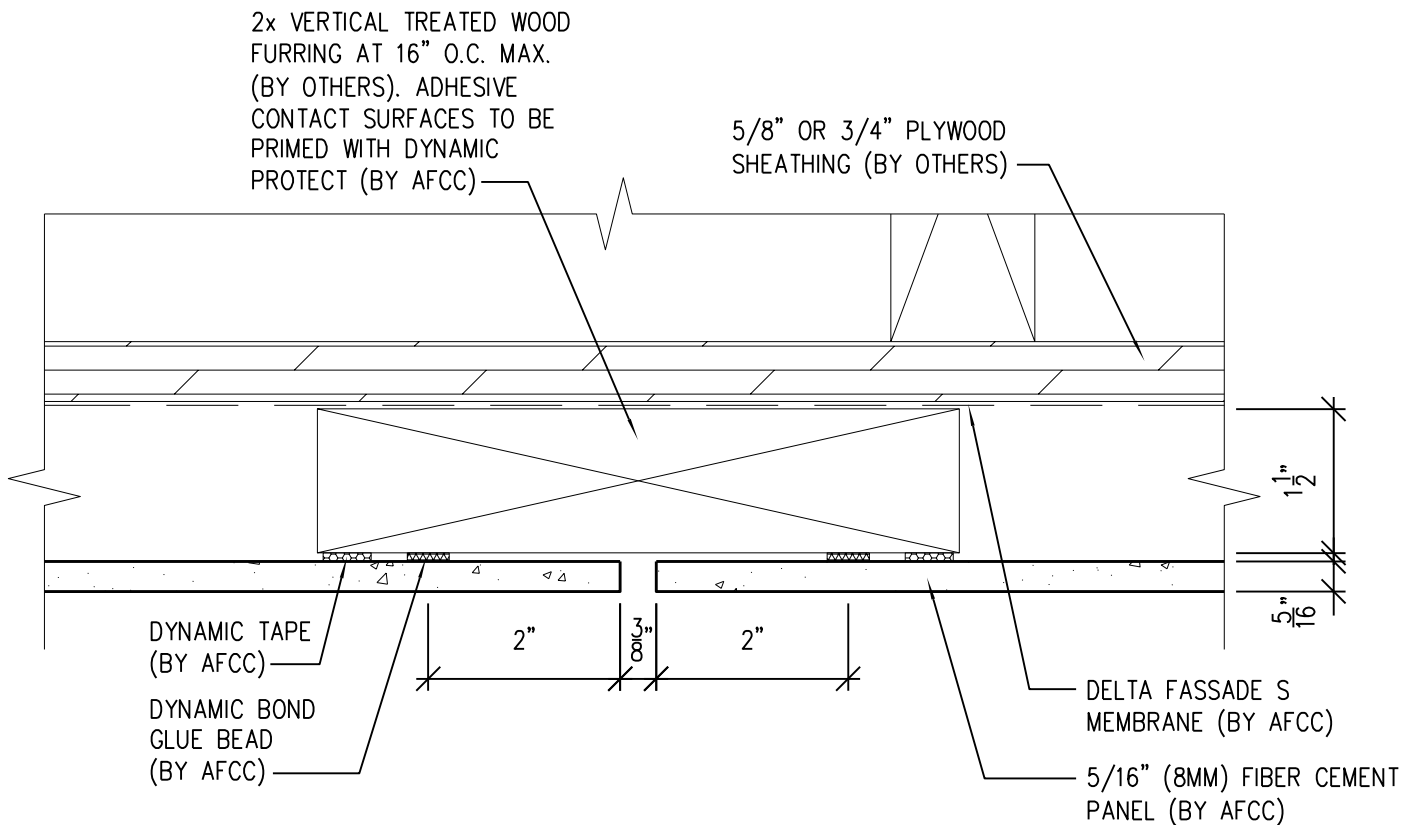
6901 S Pierce St #180, Littleton, CO 80128

Ref.: Vertical Panel Joint Option 1

Date: 11/26/2021

# One-Layer Wood Attachment System

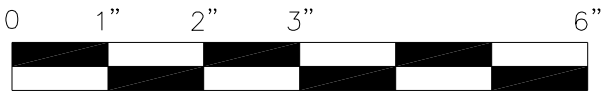
## With Dynamic Bond Adhesive Fastening



**NOTE:**  
 OPTION 1 DETAIL IS RECOMMENDED FOR VERTICAL PANEL JOINTS.

**NOTES:**

1. PANEL VERTICAL AND HORIZONTAL JOINT SPACING SHOULD BE 3/8" TYPICAL.
2. FOR VERTICAL PANEL RUNS OF 20FT OR LESS, 1x2 OR 1x4 (3/4" DEPTH) VERTICAL FURRING MAY BE USED INSTEAD OF STANDARD 2x2 OR 2x4 (1 1/2" DEPTH).



SCALE: 6" = 1'-0"

Ref.:

Vertical Panel Joint  
 Option 2

Date: 11/26/2021



**American Fiber  
 Cement Corporation**

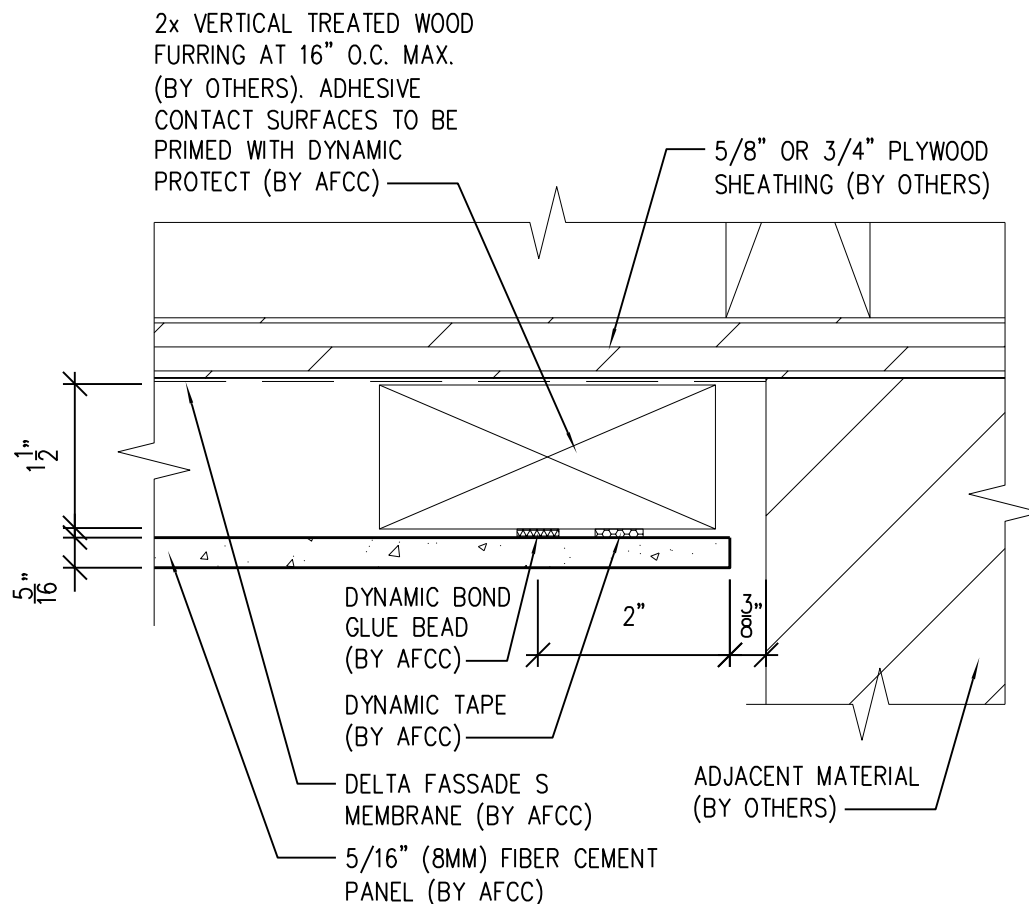
(303) 972-5107

[www.americanfibercement.com](http://www.americanfibercement.com)

6901 S Pierce St #180, Littleton, CO 80128

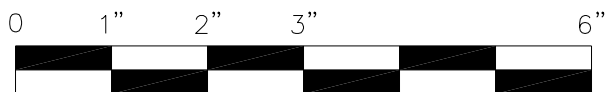
# One-Layer Wood Attachment System

## With Dynamic Bond Adhesive Fastening



### NOTES:

1. PANEL VERTICAL AND HORIZONTAL JOINT SPACING SHOULD BE 3/8" TYPICAL.
2. FOR VERTICAL PANEL RUNS OF 20FT OR LESS, 1x2 OR 1x4 (3/4" DEPTH) VERTICAL FURRING MAY BE USED INSTEAD OF STANDARD 2x2 OR 2x4 (1 1/2" DEPTH).



SCALE: 6"=1'-0"



**American Fiber Cement Corporation** (303) 972-5107  
[www.americanfibercement.com](http://www.americanfibercement.com)

6901 S Pierce St #180, Littleton, CO 80128

Ref.:

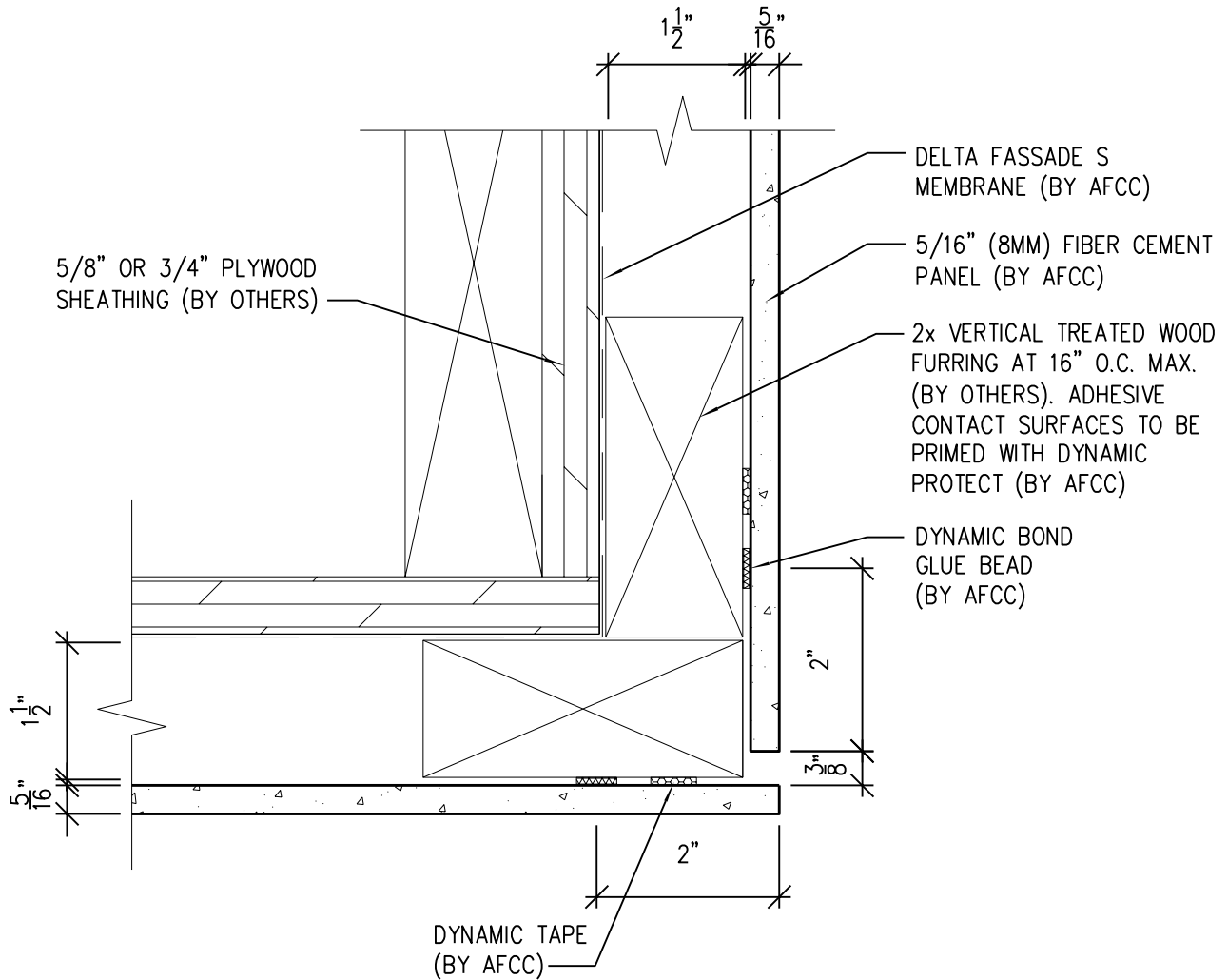
**Panel Edge @  
Butt Joint**

Date: 11/26/2021



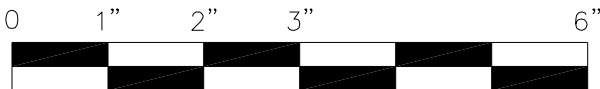
# One-Layer Wood Attachment System

With Dynamic Bond Adhesive Fastening



**NOTES:**

1. PANEL VERTICAL AND HORIZONTAL JOINT SPACING SHOULD BE 3/8" TYPICAL.
2. FOR VERTICAL PANEL RUNS OF 20FT OR LESS, 1x2 OR 1x4 (3/4" DEPTH) VERTICAL FURRING MAY BE USED INSTEAD OF STANDARD 2x2 OR 2x4 (1 1/2" DEPTH).



SCALE: 6" = 1'-0"



**American Fiber  
Cement Corporation**

(303) 972-5107

[www.americanfibercement.com](http://www.americanfibercement.com)

6901 S Pierce St #180, Littleton, CO 80128

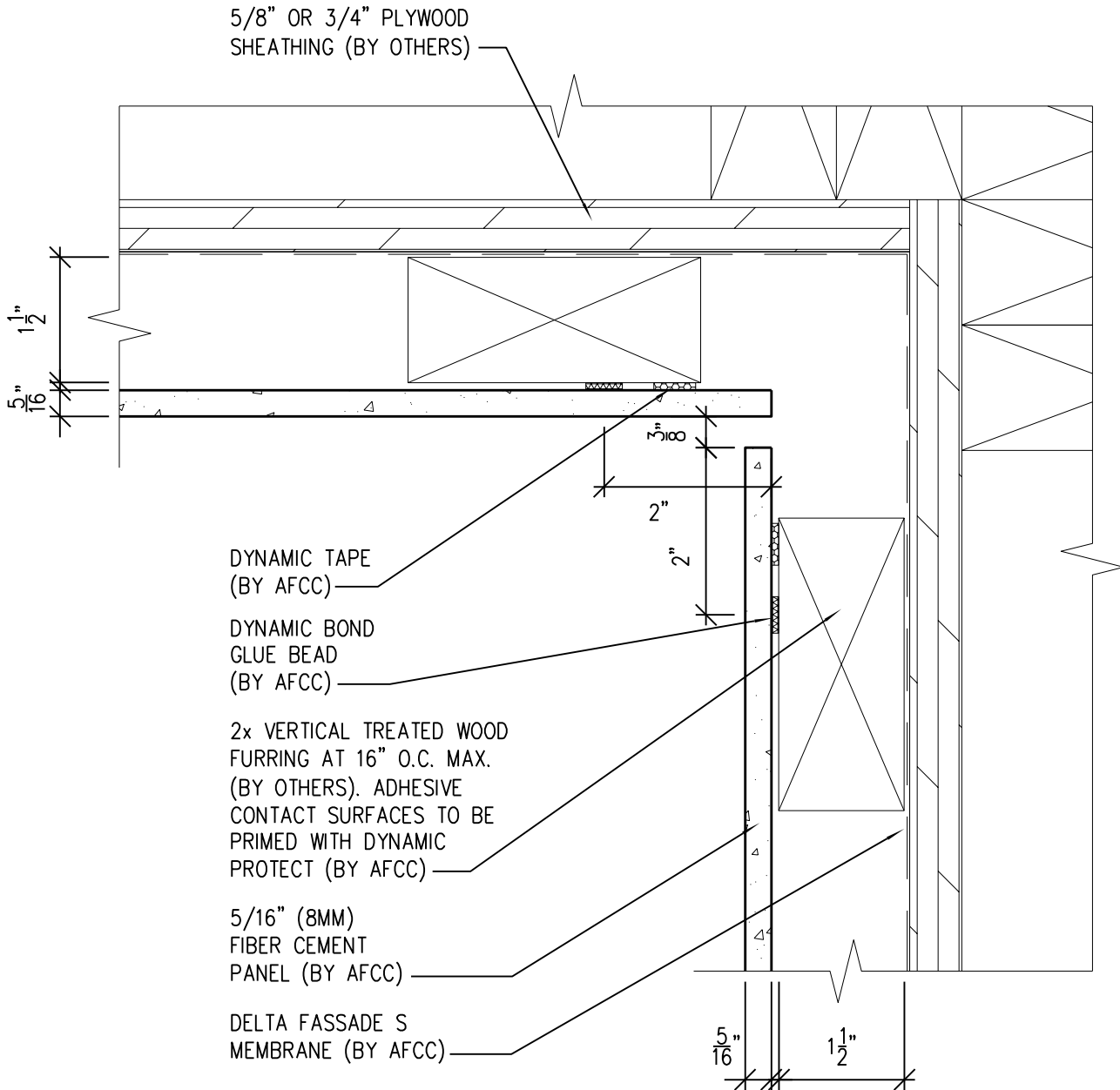
Ref.:

**Panels @  
Outside Corner**

Date: 11/26/2021

# One-Layer Wood Attachment System

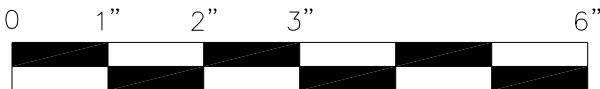
## With Dynamic Bond Adhesive Fastening



- 5/8" OR 3/4" PLYWOOD SHEATHING (BY OTHERS)
- DYNAMIC TAPE (BY AFCC)
- DYNAMIC BOND GLUE BEAD (BY AFCC)
- 2x VERTICAL TREATED WOOD FURRING AT 16" O.C. MAX. (BY OTHERS). ADHESIVE CONTACT SURFACES TO BE PRIMED WITH DYNAMIC PROTECT (BY AFCC)
- 5/16" (8MM) FIBER CEMENT PANEL (BY AFCC)
- DELTA FASSADE S MEMBRANE (BY AFCC)

**NOTES:**

1. PANEL VERTICAL AND HORIZONTAL JOINT SPACING SHOULD BE 3/8" TYPICAL.
2. FOR VERTICAL PANEL RUNS OF 20FT OR LESS, 1x2 OR 1x4 (3/4" DEPTH) VERTICAL FURRING MAY BE USED INSTEAD OF STANDARD 2x2 OR 2x4 (1 1/2" DEPTH).



SCALE: 6"=1'-0"



**American Fiber Cement Corporation**

(303) 972-5107  
[www.americanfibercement.com](http://www.americanfibercement.com)

6901 S Pierce St #180, Littleton, CO 80128

Ref.:

**Panels @  
 Inside Corner**

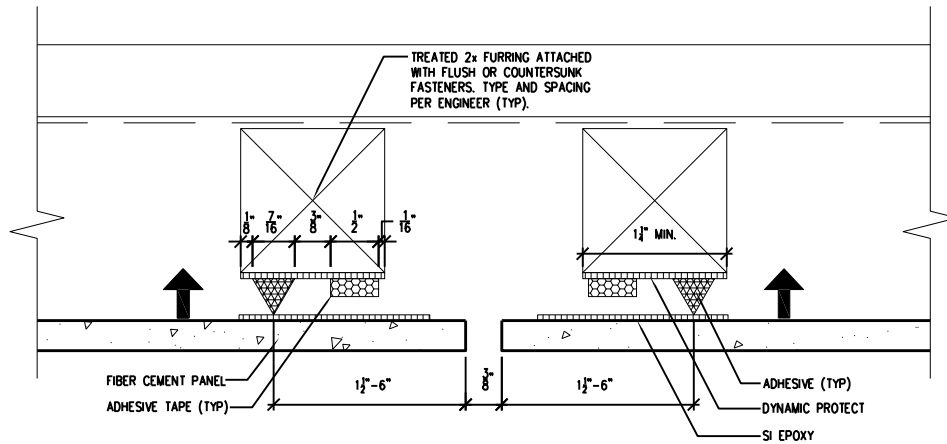
Date: 11/26/2021

# One-Layer Wood Attachment System

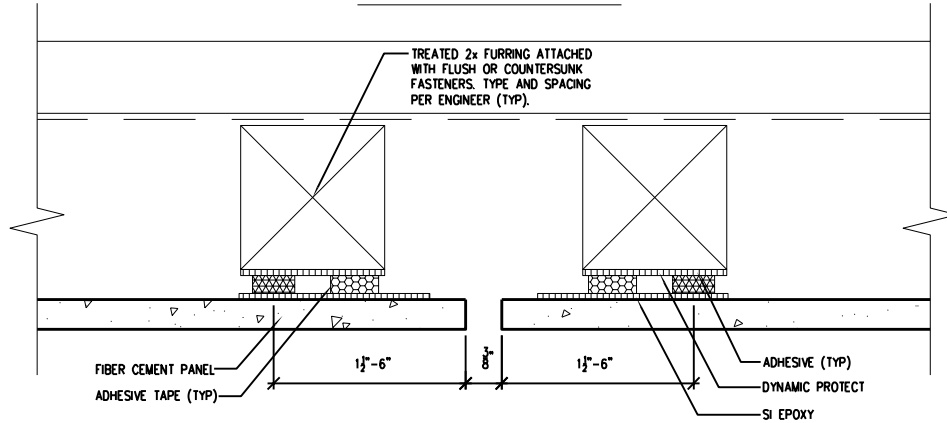
## With Dynamic Bond Adhesive Fastening

**GENERAL NOTES:**

1. WIDTH OF SUPPORTING PROFILE, TO WHICH BONDING SYSTEM WILL BE APPLIED, MUST BE A MINIMUM OF 1 1/4". 2x2 OR 2x4 FURRING RECOMMENDED.
2. JOINT IN WOOD FURRING MUST ALWAYS COINCIDE WITH JOINT IN FIBER CEMENT CLADDING.
3. SPACING OF  $\text{C}$  TO  $\text{C}$  OF VERTICAL WOOD FURRING SHALL BE DETERMINED BASED ON WIND LOAD. MAXIMUM SPACING IS 16" O.C.
4. FOR VERTICAL PANEL RUNS OF 20FT. OR LESS, 1x2 OR 1x4 VERTICAL FURRING CAN BE USED.



**PRE-ADHESION**



**POST-ADHESION**

**NOTES:**

1. PANEL VERTICAL AND HORIZONTAL JOINT SPACING SHOULD BE 3/8" TYPICAL.
2. FOR VERTICAL PANEL RUNS OF 20FT OR LESS, 1x2 OR 1x4 (3/4" DEPTH) VERTICAL FURRING MAY BE USED INSTEAD OF STANDARD 2x2 OR 2x4 (1 1/2" DEPTH).



SCALE: 6" = 1'-0"



**American Fiber  
Cement Corporation**

(303) 972-5107

www.americanfibercement.com

6901 S Pierce St #180, Littleton, CO 80128

Ref.:

**Dynamic Bond  
Typ. Detail**

Date: 11/26/2021