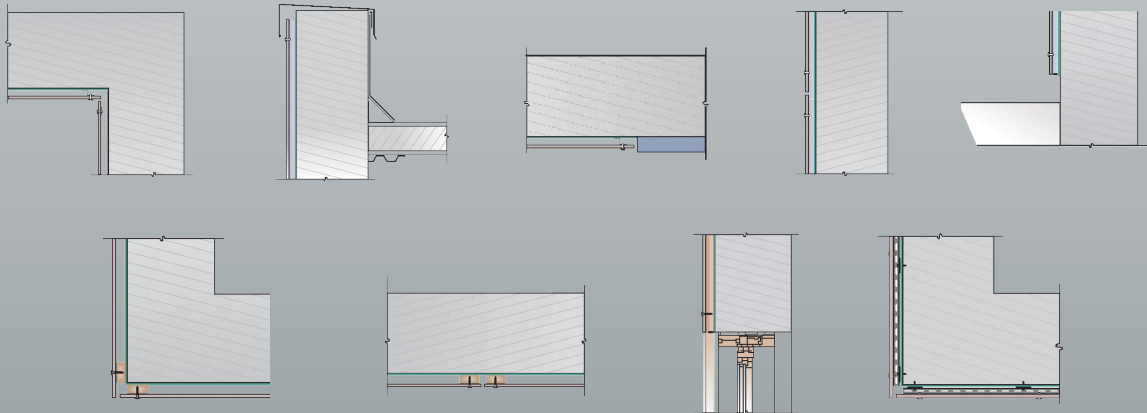


## Two-Layer Steel Attachment System with Rivets



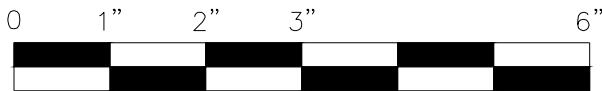
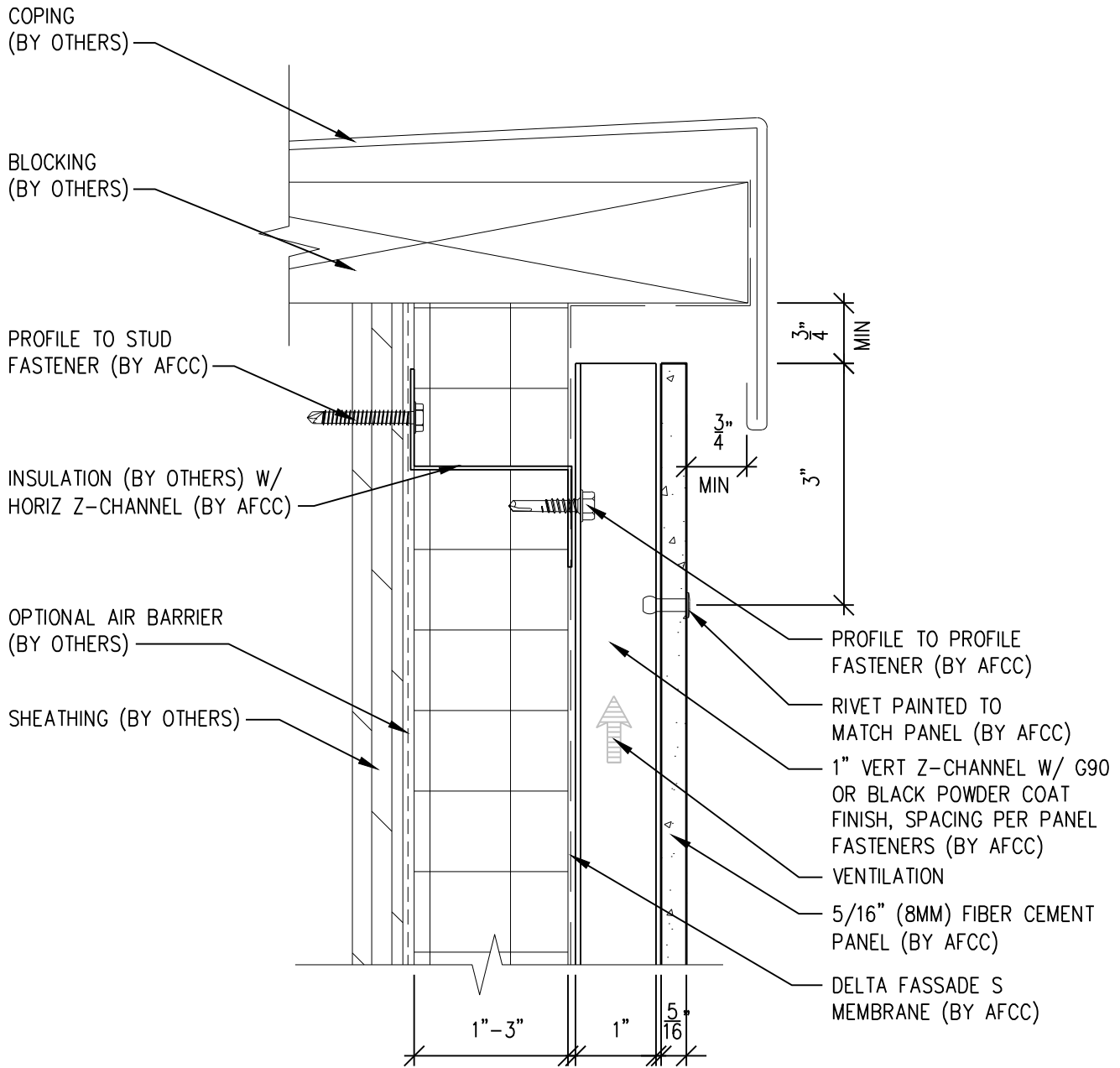


# American Fiber Cement Corporation

## Typical Details

- Page 3: Top Panel @ Coping
- Page 4: Top Panel @ Soffit
- Page 5: Top of Panel @ F.C.P Soffit
- Page 6: Horizontal Joint @ Continuous Substrate
- Page 7: Horizontal Joint @ Break In Substrate
- Page 8: Not Permitted @ Break in Substrate
- Page 9: Horizontal Joint @ Expansion Joint
- Page 10: Horizontal Panel Break @ Penetration
- Page 11: Bottom of Panel @ Wall Base
- Page 12: Bottom of Panel @ Open Termination
- Page 13: Bottom of Panel @ Low Roof Flashing
- Page 14: Bottom of Panel @ Soffit
- Page 15: Bottom of Panel @ Soffit (Alternate)
- Page 16: Bottom of Panel @ F.C.P. Soffit
- Page 17: Bottom of Panel @ F.C.P Soffit (Alternate)
- Page 18: Soffit Termination @ Adjacent Material
- Page 19: Bottom of Panel @ Window Head
- Page 20: Bottom of Panel @ Window Head (Alternate)
- Page 21: F.C.P Return @ Window Head
- Page 22: Top of Panel @ Window Sill
- Page 23: Panel Edge @ Window Jamb
- Page 24: Panel Edge @ Window Jamb (Alternate)
- Page 25: F.C.P Return @ Window Jamb
- Page 26: Vertical Panel Joint Option 1
- Page 27: Vertical Panel Joint Option 2
- Page 28: Vertical Panel Break @ Penetration
- Page 29: Panel Edge @ Butt Joint
- Page 30: Panels @ Outside Corner
- Page 31: Panels @ Inside Corner
- Page 32: Expansion Joint @ Inside Corner
- Page 33: Typical Fastener Layout

# Two-Layer Steel Attachment System



SCALE: 6"=1'-0"

**NOTES:**

1. PANEL VERTICAL AND HORIZONTAL JOINT SPACING SHOULD BE 3/8" TYPICAL.



**American Fiber  
Cement Corporation**

(303) 972-5107

[www.americanfibercement.com](http://www.americanfibercement.com)

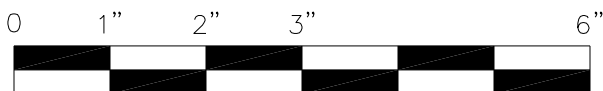
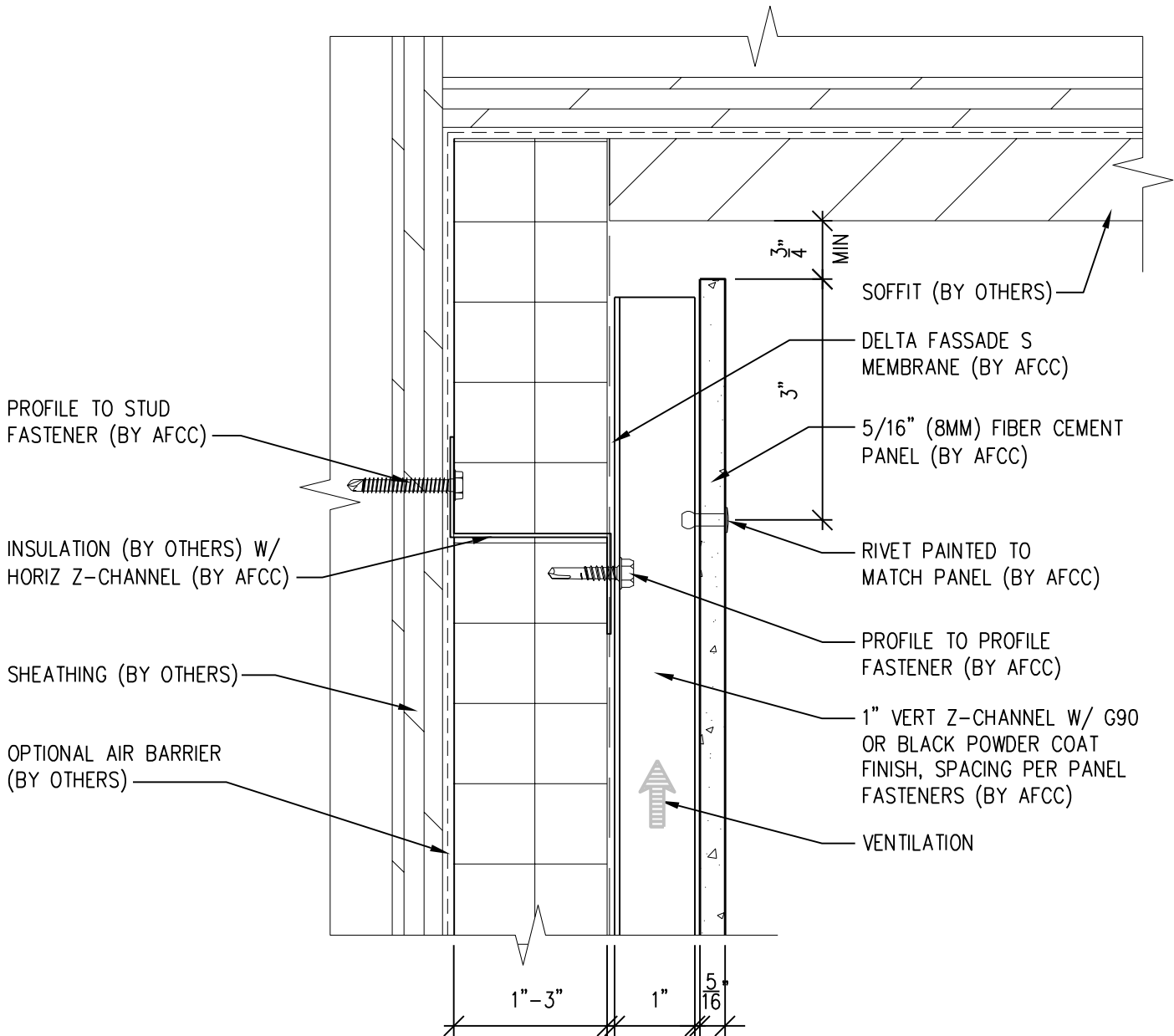
6901 S Pierce St #180, Littleton, CO 80128

Ref.:

Top of Panel @  
Coping

Date: 11/04/2021

# Two-Layer Steel Attachment System



SCALE: 6" = 1'-0"

**NOTES:**

1. PANEL VERTICAL AND HORIZONTAL JOINT SPACING SHOULD BE 3/8" TYPICAL.



**American Fiber Cement Corporation** [www.americanfibercement.com](http://www.americanfibercement.com)

(303) 972-5107

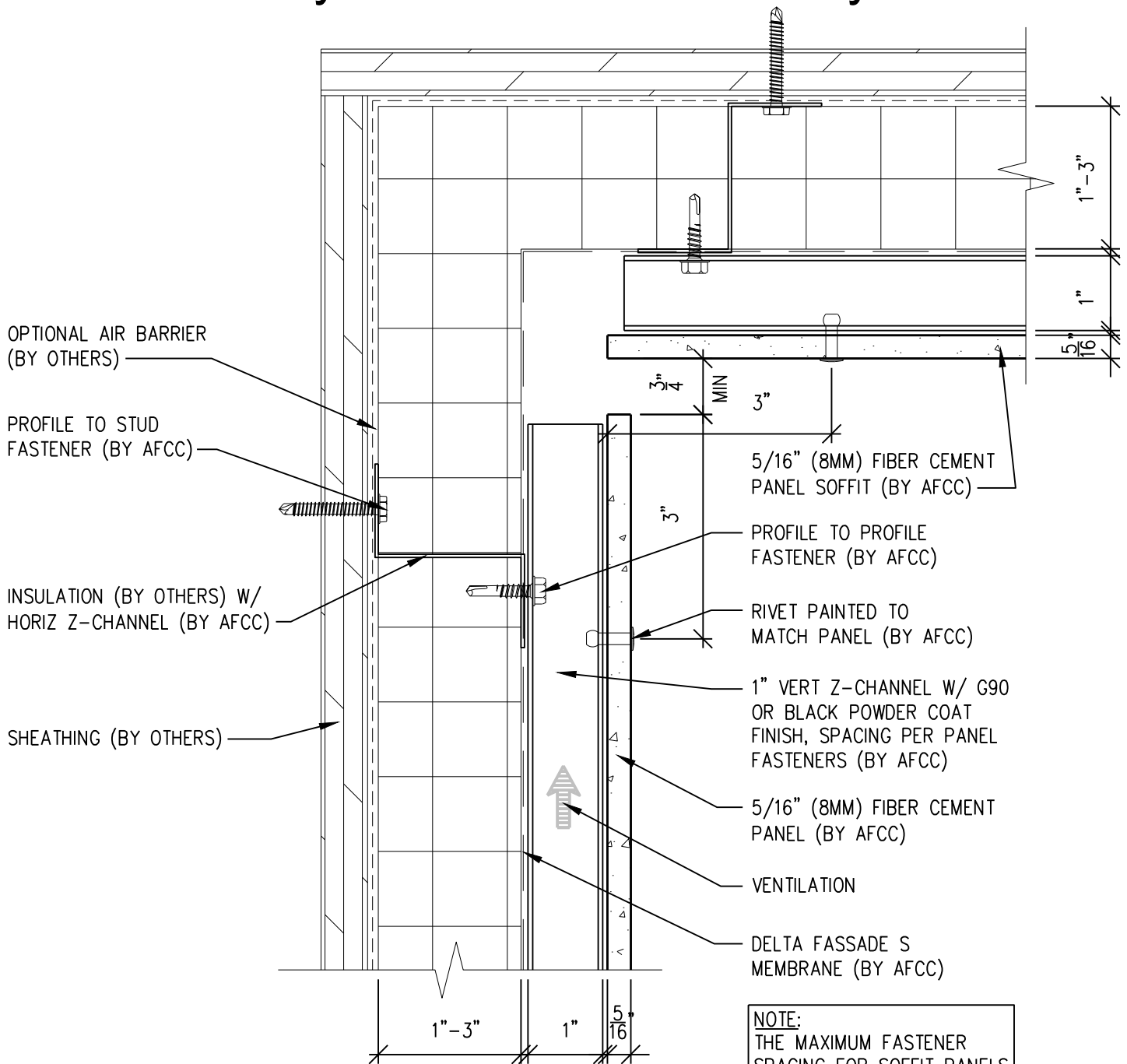
6901 S Pierce St #180, Littleton, CO 80128

Ref.:

Top of Panel @ Soffit

Date: 11/04/2021

# Two-Layer Steel Attachment System



OPTIONAL AIR BARRIER  
(BY OTHERS)

PROFILE TO STUD  
FASTENER (BY AFCC)

INSULATION (BY OTHERS) W/  
HORIZ Z-CHANNEL (BY AFCC)

SHEATHING (BY OTHERS)

5/16" (8MM) FIBER CEMENT  
PANEL SOFFIT (BY AFCC)

PROFILE TO PROFILE  
FASTENER (BY AFCC)

RIVET PAINTED TO  
MATCH PANEL (BY AFCC)

1" VERT Z-CHANNEL W/ G90  
OR BLACK POWDER COAT  
FINISH, SPACING PER PANEL  
FASTENERS (BY AFCC)

5/16" (8MM) FIBER CEMENT  
PANEL (BY AFCC)

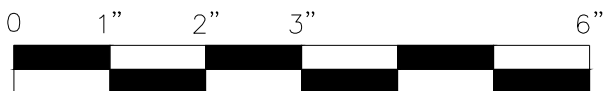
VENTILATION

DELTA FAÇADE S  
MEMBRANE (BY AFCC)

**NOTE:**  
THE MAXIMUM FASTENER  
SPACING FOR SOFFIT PANELS  
IS 16" O.C.

**NOTES:**

1. PANEL VERTICAL AND HORIZONTAL JOINT SPACING SHOULD BE 3/8" TYPICAL.



SCALE: 6"=1'-0"



**American Fiber  
Cement Corporation**

(303) 972-5107

www.americanfibercement.com

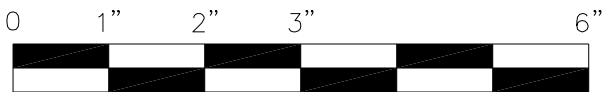
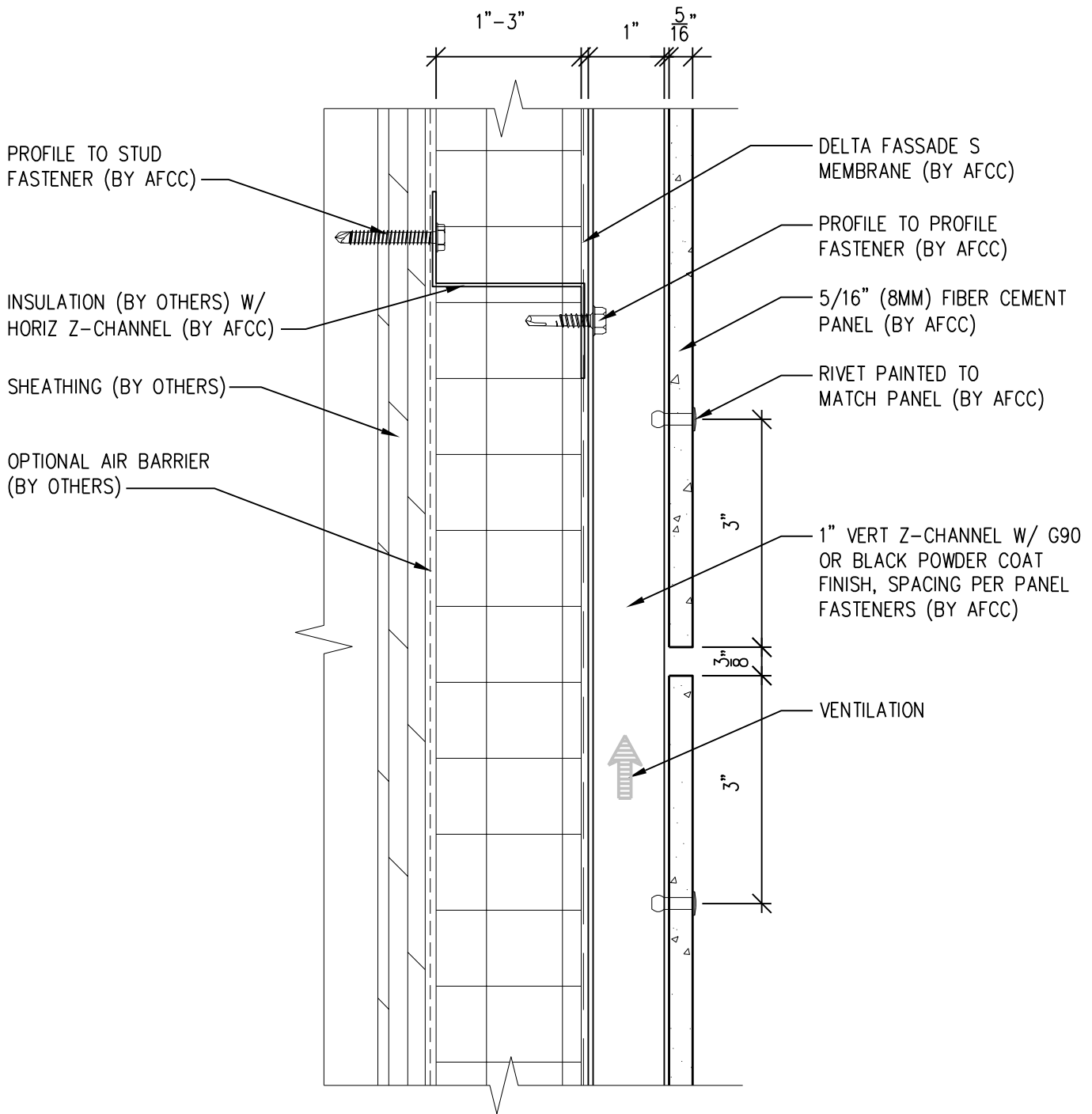
6901 S Pierce St #180, Littleton, CO 80128

Ref.:

Top of Panel @  
F.C.P. Soffit

Date: 11/19/2021

# Two-Layer Steel Attachment System



SCALE: 6" = 1'-0"

**NOTES:**

1. PANEL VERTICAL AND HORIZONTAL JOINT SPACING SHOULD BE 3/8" TYPICAL.



**American Fiber Cement Corporation** (303) 972-5107  
[www.americanfibercement.com](http://www.americanfibercement.com)

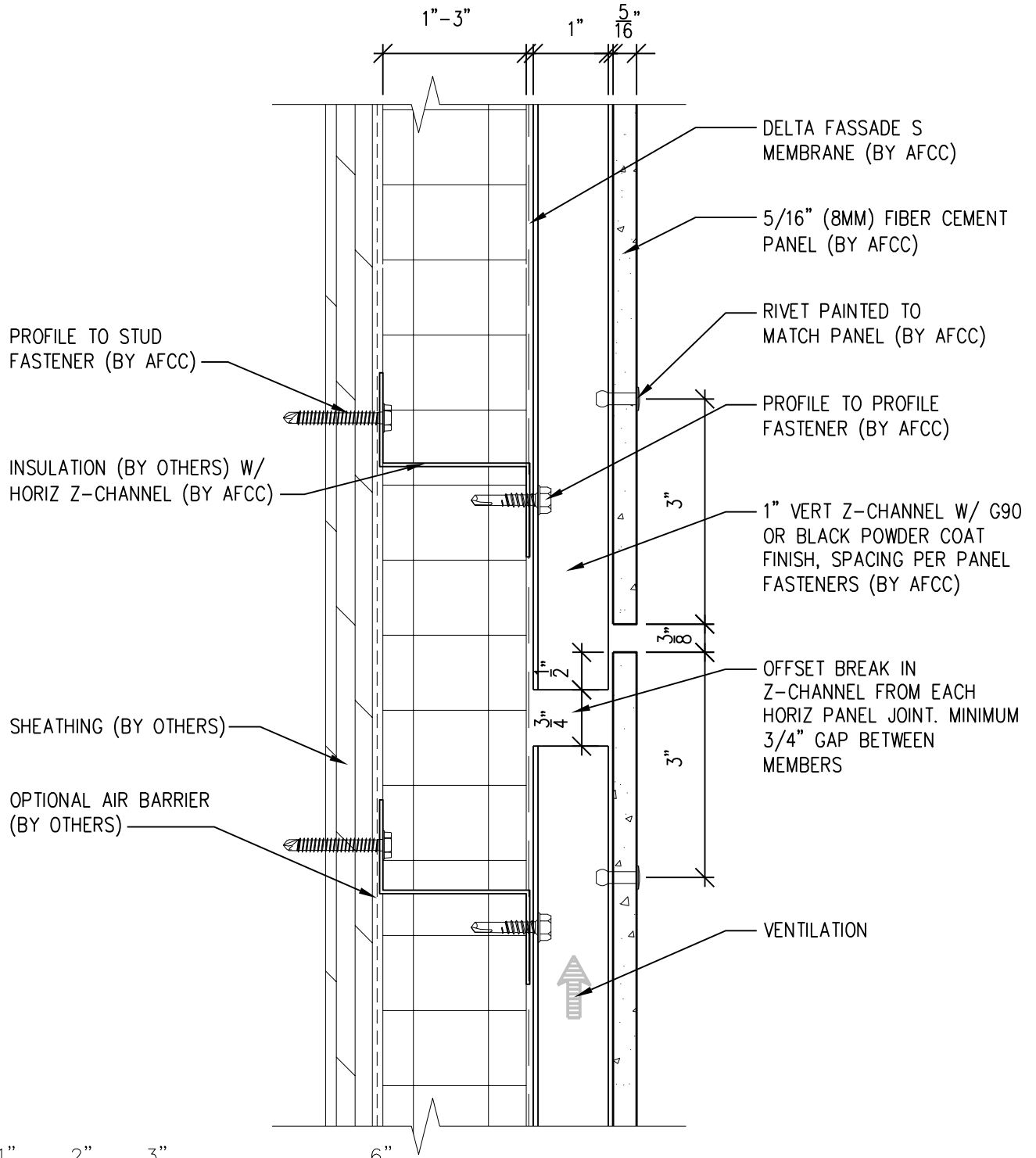
6901 S Pierce St #180, Littleton, CO 80128

Ref.:

Horizontal Joint @  
 Continuous Substrate

Date: 11/04/2021

# Two-Layer Steel Attachment System



SCALE: 6"=1'-0"

**NOTES:**

1. PANEL VERTICAL AND HORIZONTAL JOINT SPACING SHOULD BE 3/8" TYPICAL.



**American Fiber  
Cement Corporation**

(303) 972-5107

[www.americanfibercement.com](http://www.americanfibercement.com)

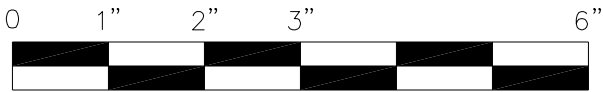
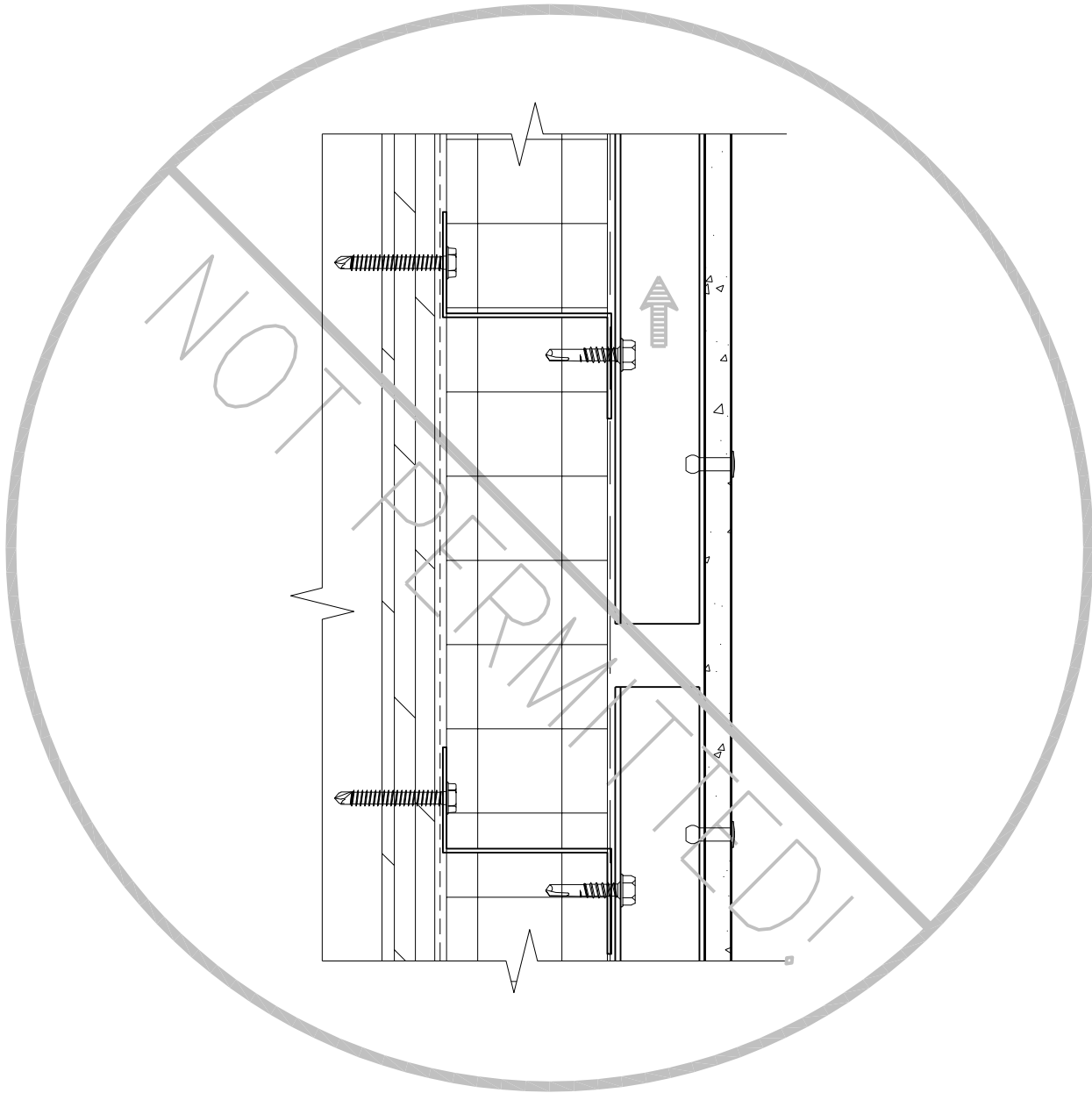
6901 S Pierce St #180, Littleton, CO 80128

Ref.:

**Horizontal Joint @  
Break in Substrate**

Date: 11/04/2021

# Two-Layer Steel Attachment System



SCALE: 6"=1'-0"

**NOTES:**

1. PANEL VERTICAL AND HORIZONTAL JOINT SPACING SHOULD BE 3/8" TYPICAL.



**American Fiber Cement Corporation** (303) 972-5107  
www.americanfibercement.com

6901 S Pierce St #180, Littleton, CO 80128

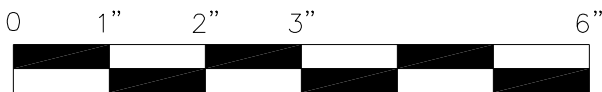
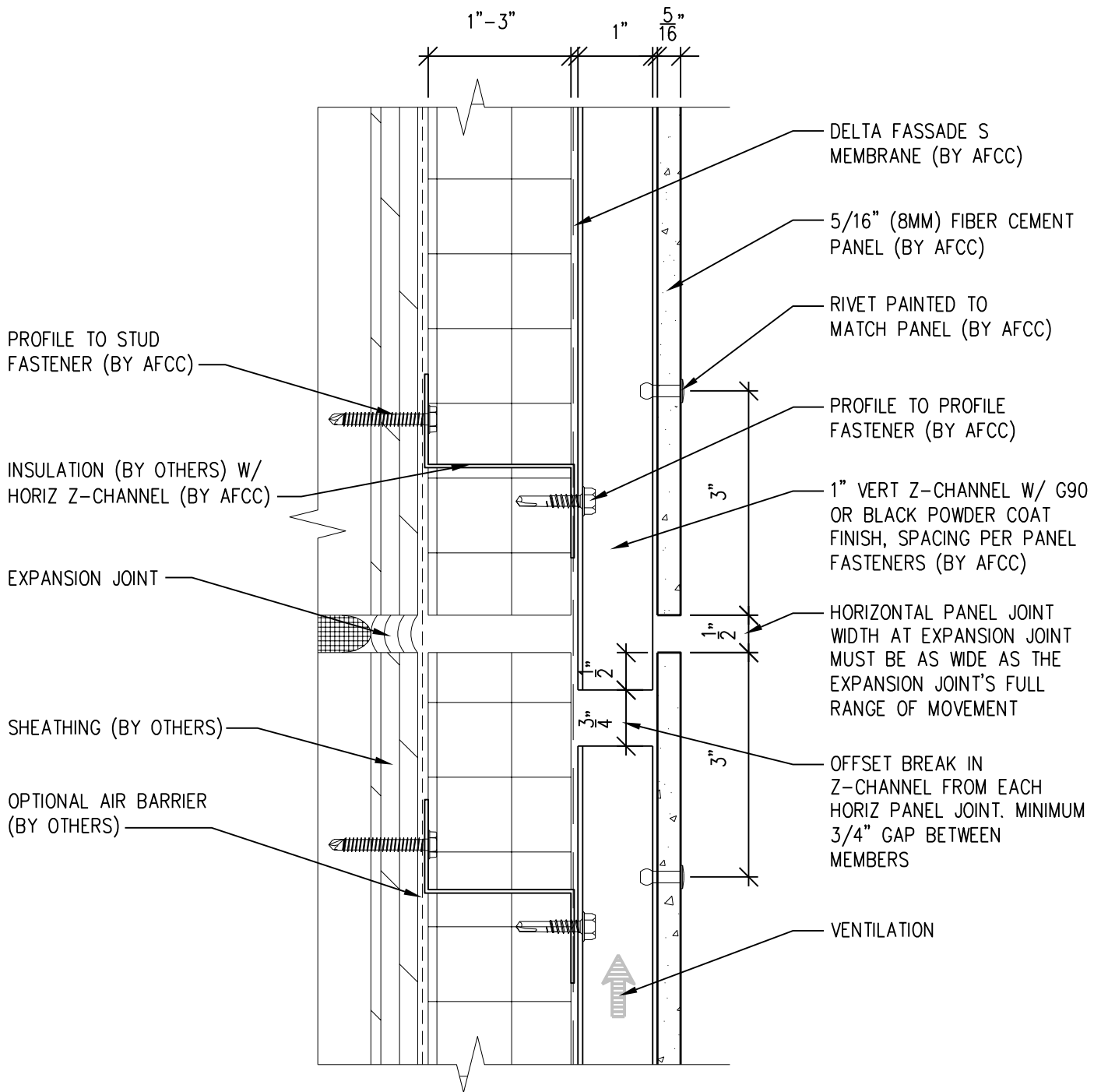
Ref.:

**Not Permitted @  
Break in Substrate**

Date: 11/04/2021



# Two-Layer Steel Attachment System



SCALE: 6"=1'-0"

**NOTES:**

1. PANEL VERTICAL AND HORIZONTAL JOINT SPACING SHOULD BE 3/8" TYPICAL.



**American Fiber Cement Corporation** www.americanfibercement.com

(303) 972-5107

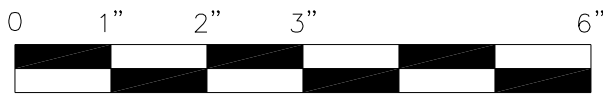
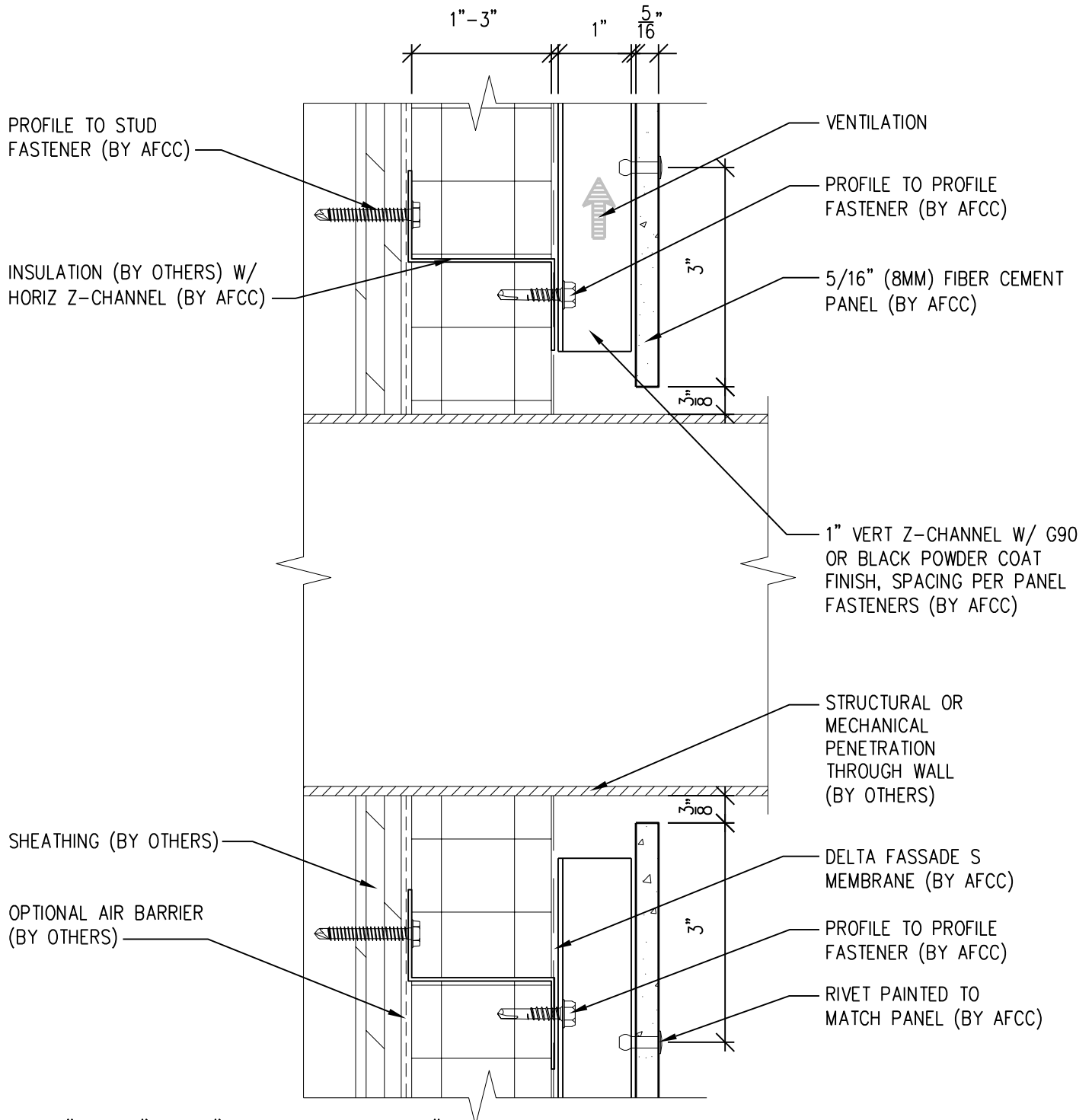
6901 S Pierce St #180, Littleton, CO 80128

Ref.:

Horizontal Joint @  
Expansion Joint

Date: 11/04/2021

# Two-Layer Steel Attachment System



SCALE: 6" = 1'-0"

- NOTES:
1. PANEL VERTICAL AND HORIZONTAL JOINT SPACING SHOULD BE 3/8" TYPICAL.


**American Fiber Cement Corporation**

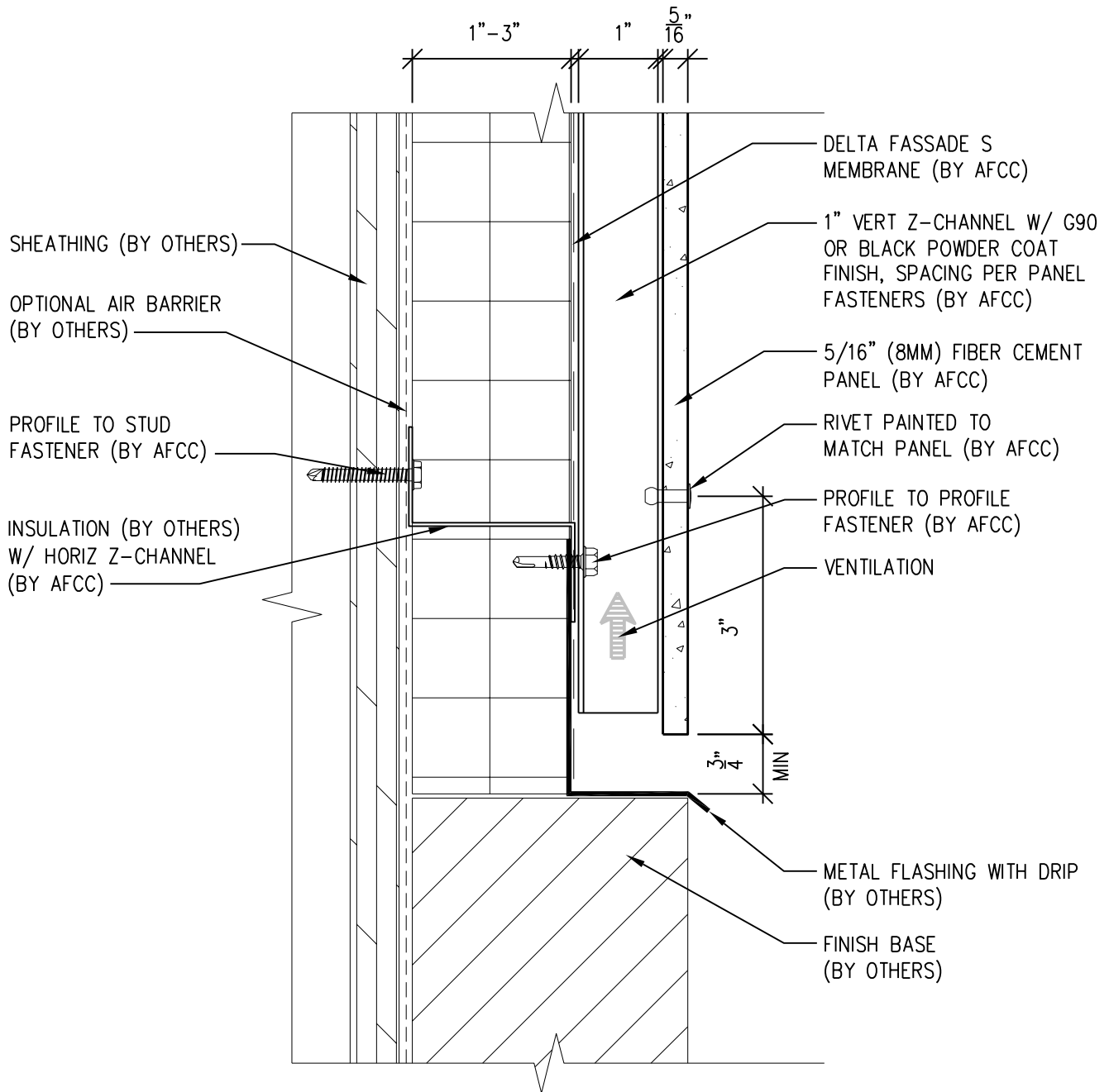
(303) 972-5107  
[www.americanfibercement.com](http://www.americanfibercement.com)

Ref.:  
**Horizontal Panel Break @ Penetration**

6901 S Pierce St #180, Littleton, CO 80128

Date: 11/04/2021

# Two-Layer Steel Attachment System



**NOTES:**

1. PANEL VERTICAL AND HORIZONTAL JOINT SPACING SHOULD BE 3/8" TYPICAL.



SCALE: 6"=1'-0"



**American Fiber  
Cement Corporation**

(303) 972-5107

[www.americanfibercement.com](http://www.americanfibercement.com)

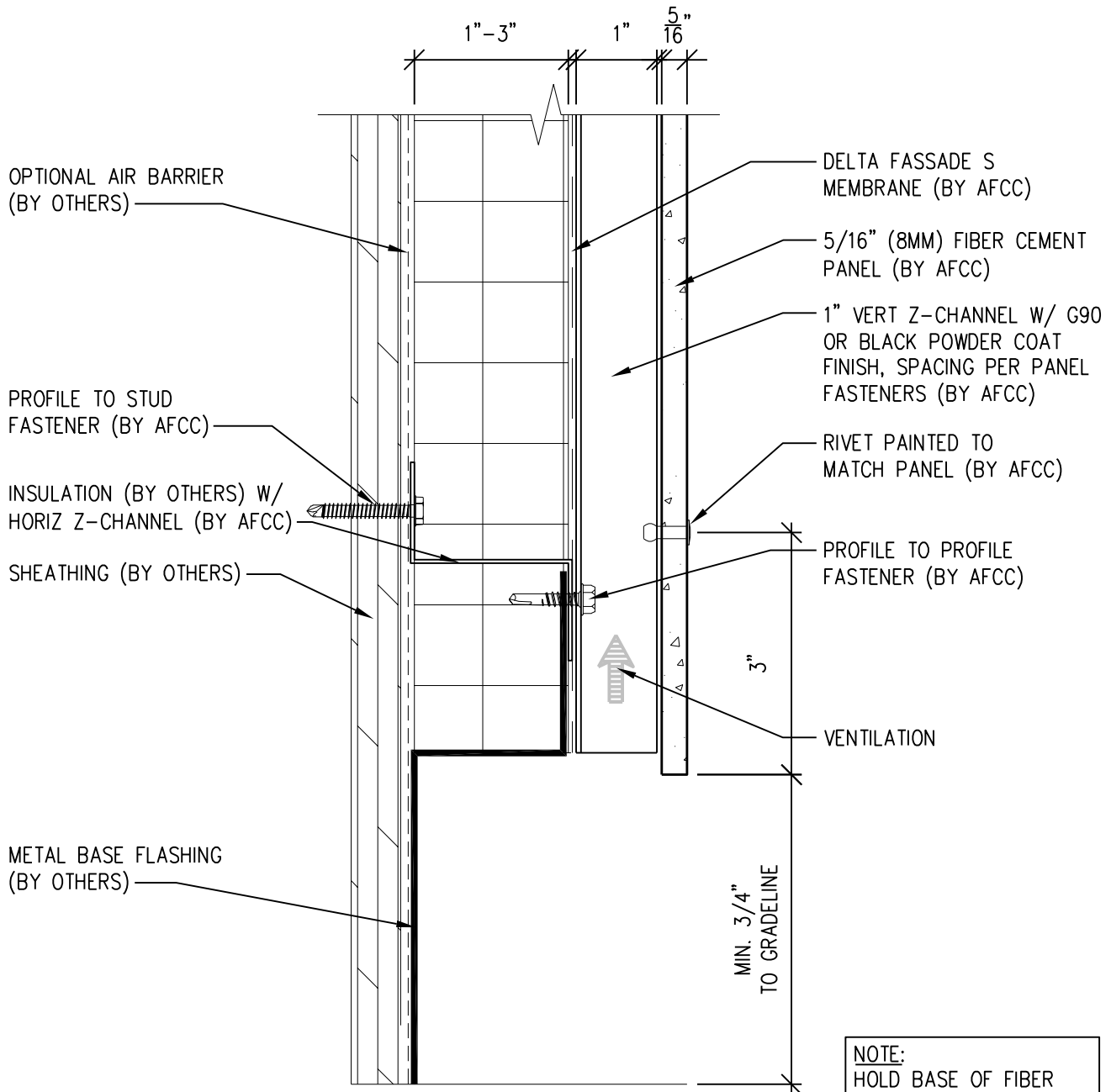
6901 S Pierce St #180, Littleton, CO 80128

Ref.:

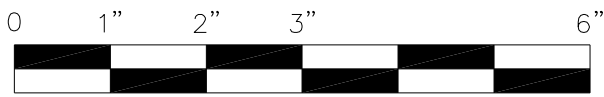
Bottom of Panel @  
Wall Base

Date: 11/04/2021

# Two-Layer Steel Attachment System



**NOTE:**  
 HOLD BASE OF FIBER CEMENT PANEL 6"-12" OFF GRADE BASED ON EXPECTED SNOW BUILDUP



SCALE: 6" = 1'-0"

**NOTES:**

1. PANEL VERTICAL AND HORIZONTAL JOINT SPACING SHOULD BE 3/8" TYPICAL.



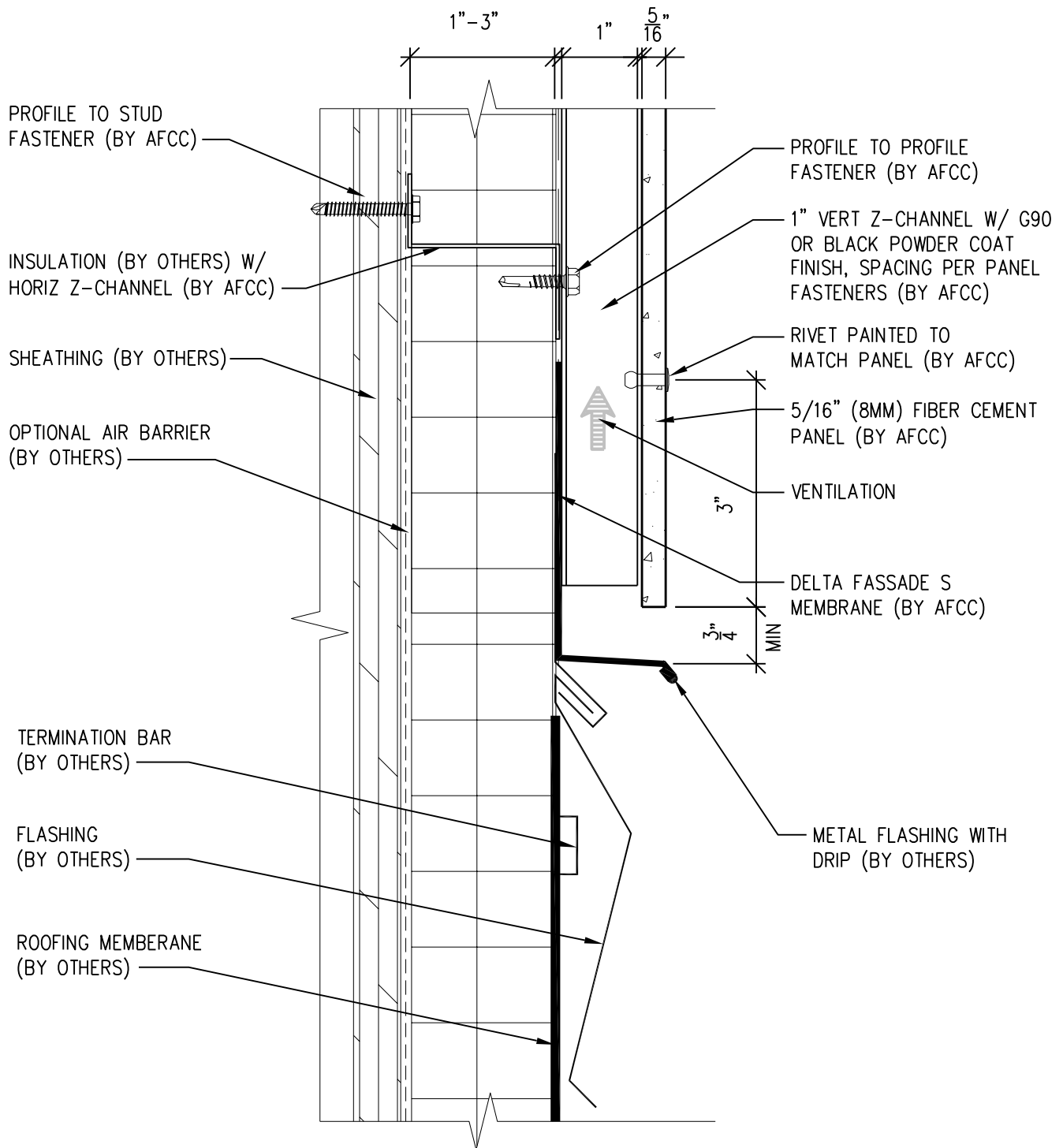
**American Fiber Cement Corporation** www.americanfibercement.com  
 (303) 972-5107

6901 S Pierce St #180, Littleton, CO 80128

Ref.:  
 Bottom of Panel @  
 Open Termination

Date: 11/04/2021

# Two-Layer Steel Attachment System



SCALE: 6" = 1'-0"

**NOTES:**

1. PANEL VERTICAL AND HORIZONTAL JOINT SPACING SHOULD BE 3/8" TYPICAL.



**American Fiber  
Cement Corporation**

(303) 972-5107

www.americanfibercement.com

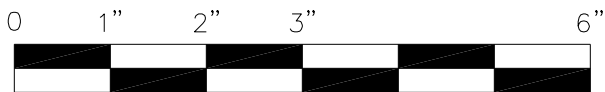
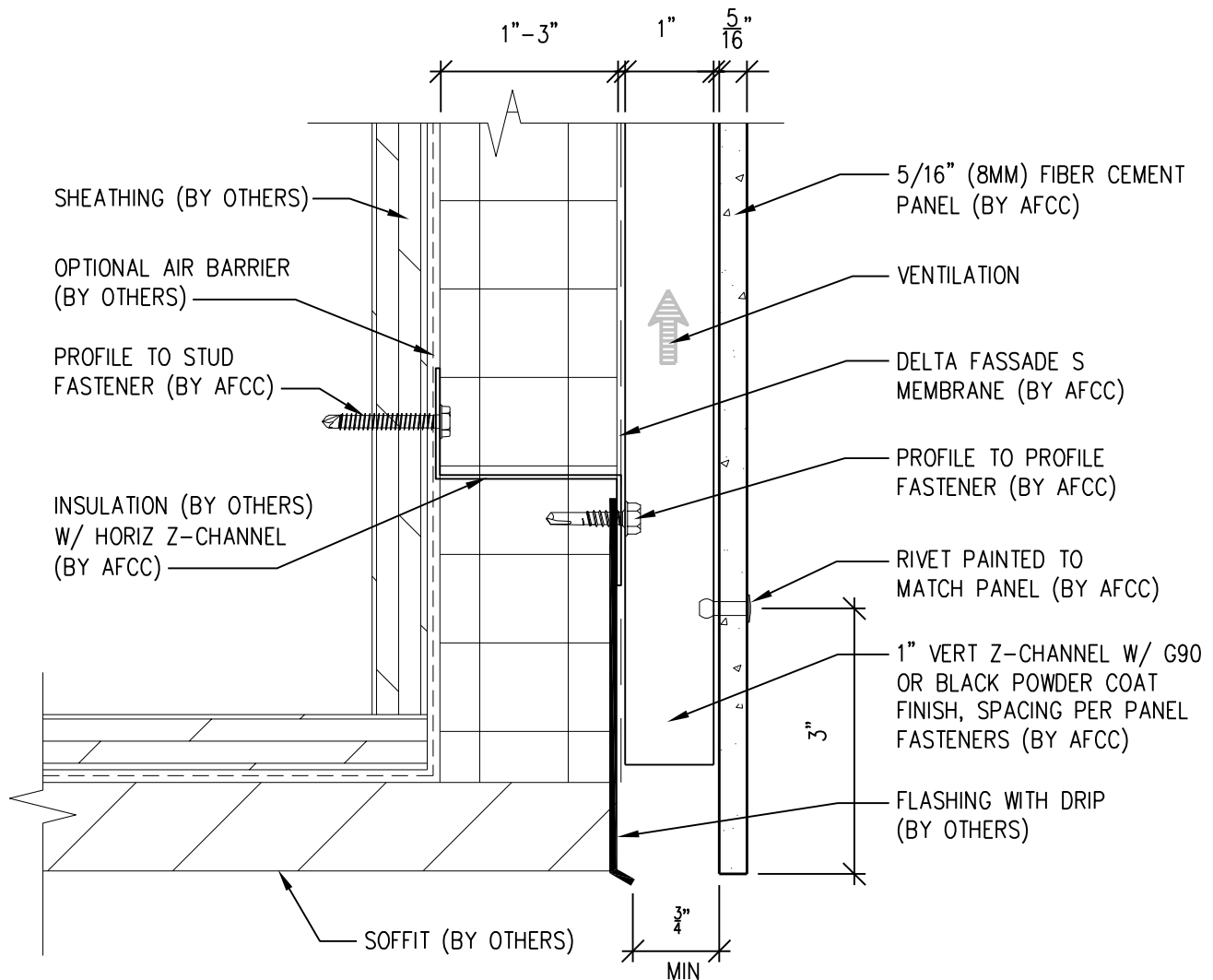
6901 S Pierce St #180, Littleton, CO 80128

Ref.:

Bottom of Panel @  
Low Roof Flashing

Date: 11/04/2021

# Two-Layer Steel Attachment System



SCALE: 6" = 1'-0"

**NOTES:**

1. PANEL VERTICAL AND HORIZONTAL JOINT SPACING SHOULD BE 3/8" TYPICAL.



**American Fiber Cement Corporation** [www.americanfibercement.com](http://www.americanfibercement.com)

(303) 972-5107

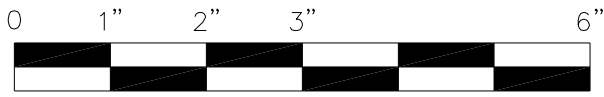
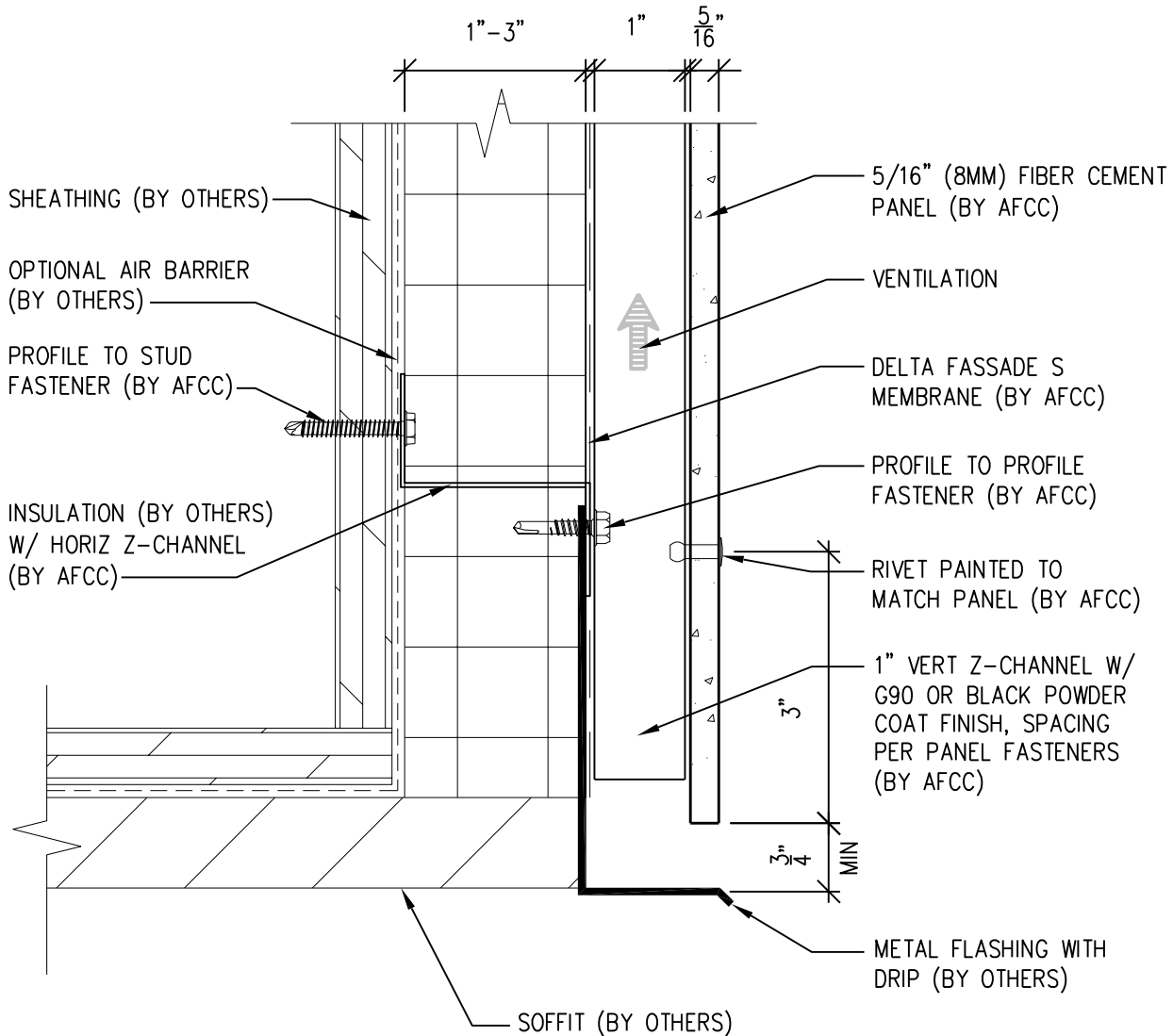
6901 S Pierce St #180, Littleton, CO 80128

Ref.:

Bottom of Panel @ Soffit

Date: 11/04/2021

# Two-Layer Steel Attachment System



SCALE: 6" = 1'-0"

**NOTES:**

1. PANEL VERTICAL AND HORIZONTAL JOINT SPACING SHOULD BE 3/8" TYPICAL.



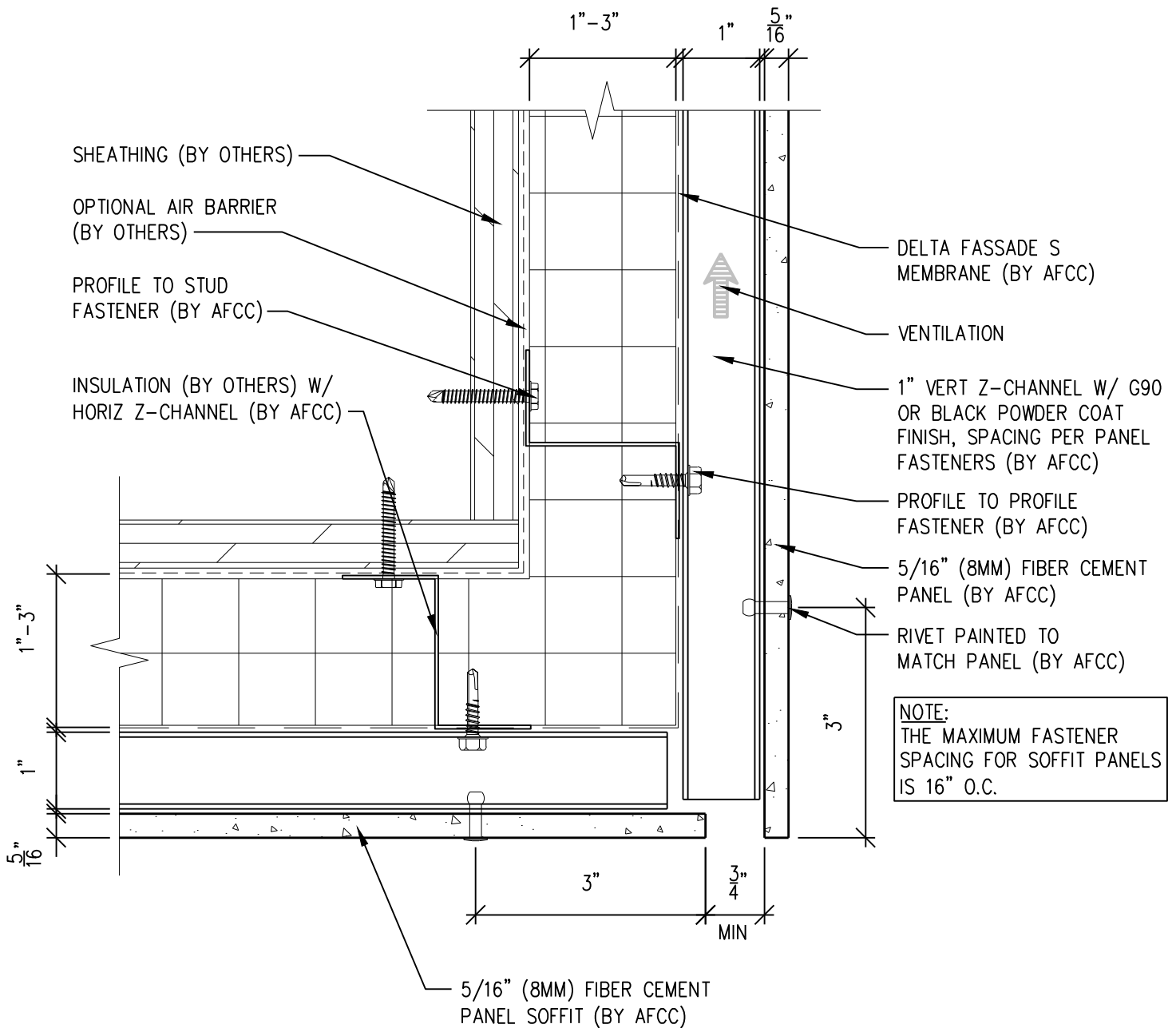
**American Fiber Cement Corporation** (303) 972-5107  
[www.americanfibercement.com](http://www.americanfibercement.com)

6901 S Pierce St #180, Littleton, CO 80128

Ref.:  
 Bottom of Panel @  
 Soffit (Alternate)

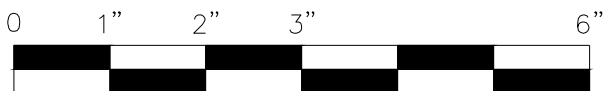
Date: 11/04/2021

# Two-Layer Steel Attachment System



**NOTES:**

1. PANEL VERTICAL AND HORIZONTAL JOINT SPACING SHOULD BE 3/8" TYPICAL.



SCALE: 6"=1'-0"



**American Fiber  
Cement Corporation**

(303) 972-5107

www.americanfibercement.com

6901 S Pierce St #180, Littleton, CO 80128

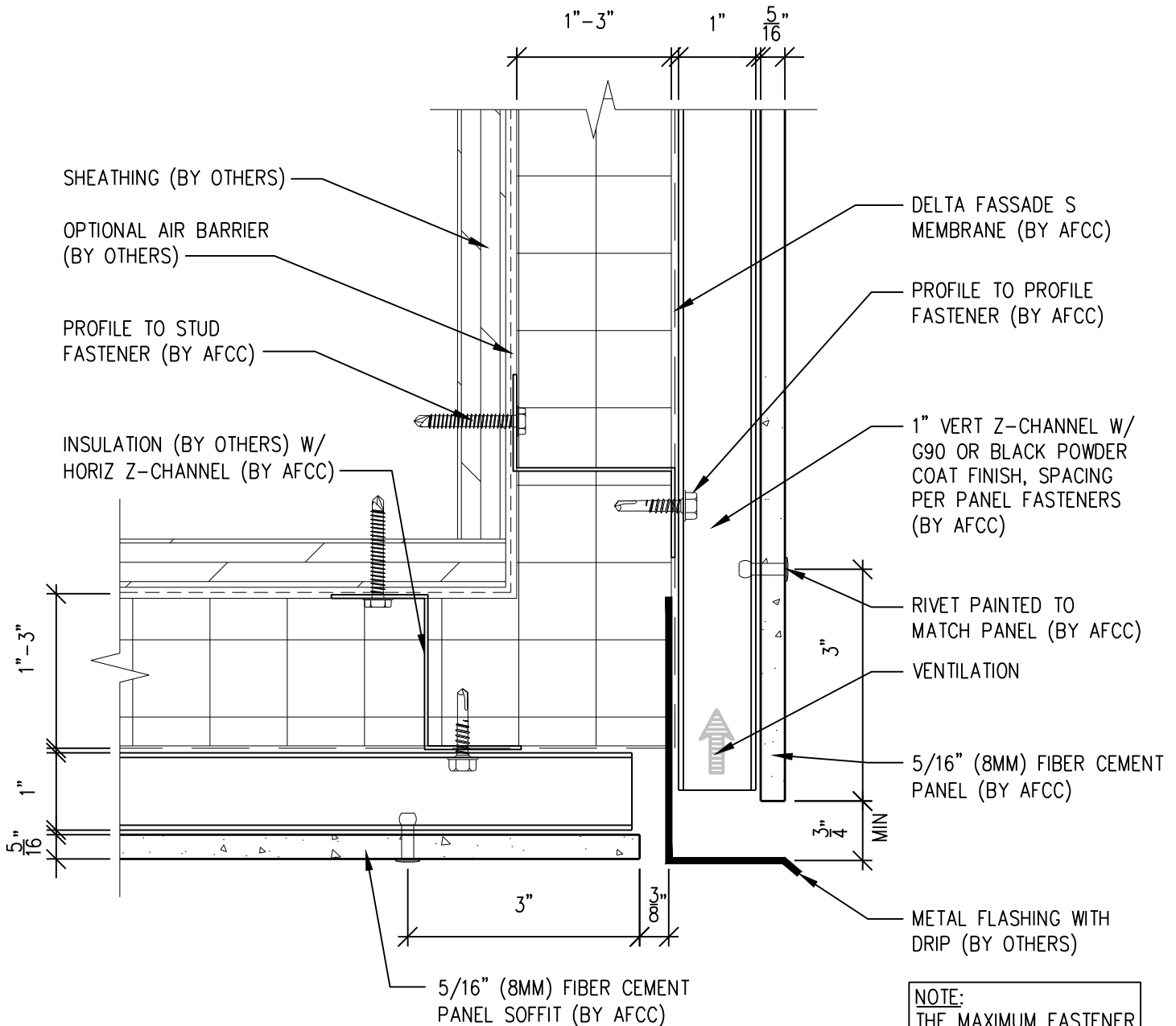
Ref.:

Bottom of Panel @  
F.C.P. Soffit

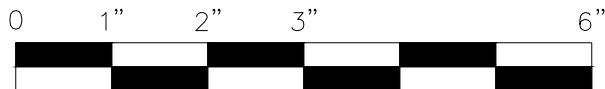
Date: 11/19/2021



# Two-Layer Steel Attachment System



**NOTE:**  
THE MAXIMUM FASTENER SPACING FOR SOFFIT PANELS IS 16" O.C.



SCALE: 6"=1'-0"

**NOTES:**

1. PANEL VERTICAL AND HORIZONTAL JOINT SPACING SHOULD BE 3/8" TYPICAL.



**American Fiber Cement Corporation** [www.americanfibercement.com](http://www.americanfibercement.com)

(303) 972-5107

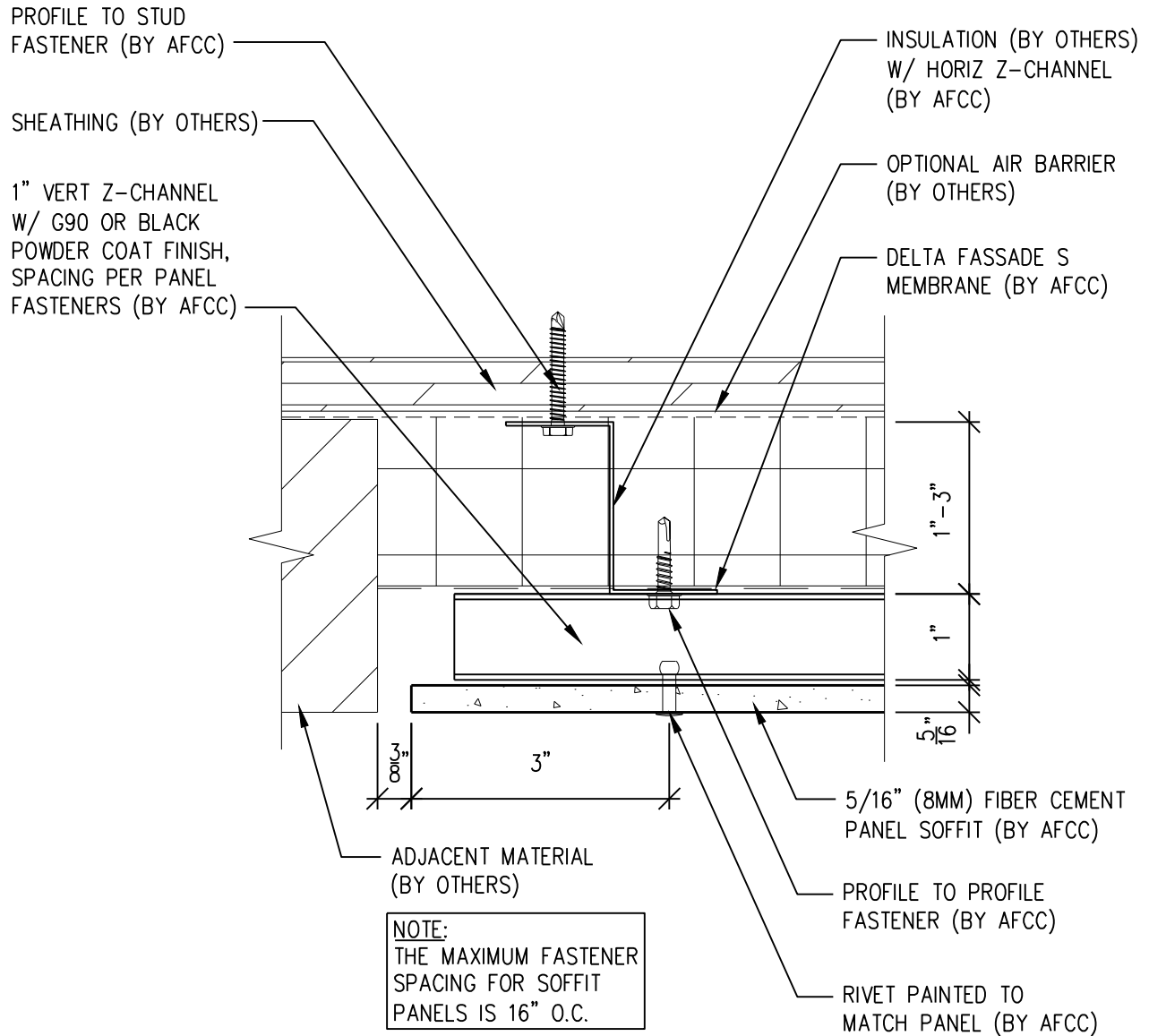
6901 S Pierce St #180, Littleton, CO 80128

Ref.:

Bottom of Panel @  
F.C.P. Soffit (Alternate)

Date: 11/19/2021

# Two-Layer Steel Attachment System



SCALE: 6"=1'-0"

**NOTES:**

1. PANEL VERTICAL AND HORIZONTAL JOINT SPACING SHOULD BE 3/8" TYPICAL.



**American Fiber Cement Corporation**  
 (303) 972-5107  
[www.americanfibercement.com](http://www.americanfibercement.com)

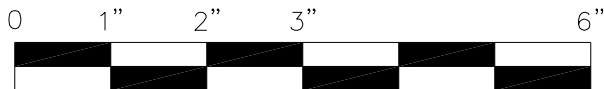
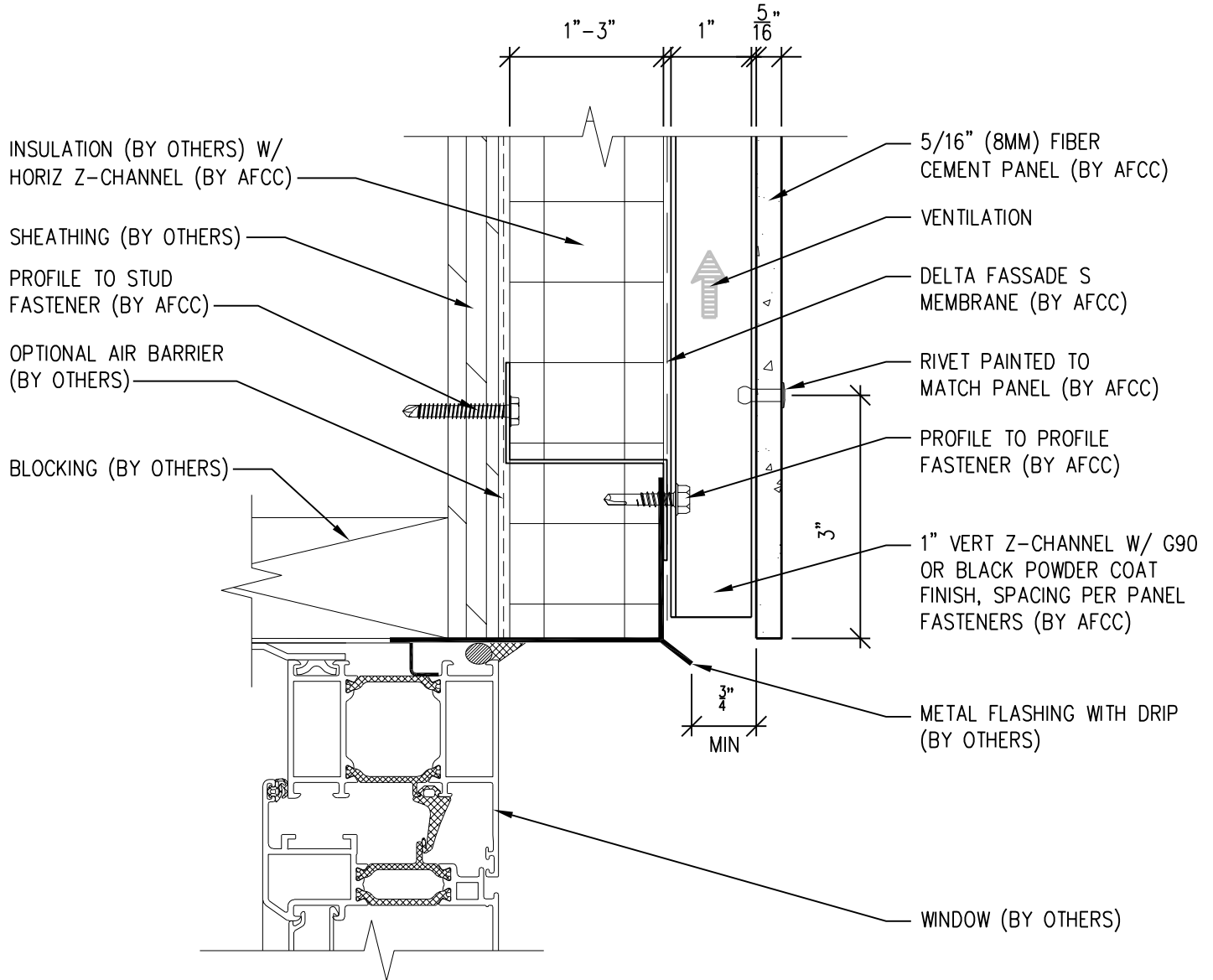
6901 S Pierce St #180, Littleton, CO 80128

Ref.:

**Soffit Termination @  
 Adjacent Material**

Date: 11/19/2021

# Two-Layer Steel Attachment System



SCALE: 6"=1'-0"

**NOTES:**

1. PANEL VERTICAL AND HORIZONTAL JOINT SPACING SHOULD BE 3/8" TYPICAL.



**American Fiber  
Cement Corporation**

(303) 972-5107

[www.americanfibercement.com](http://www.americanfibercement.com)

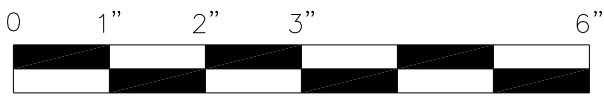
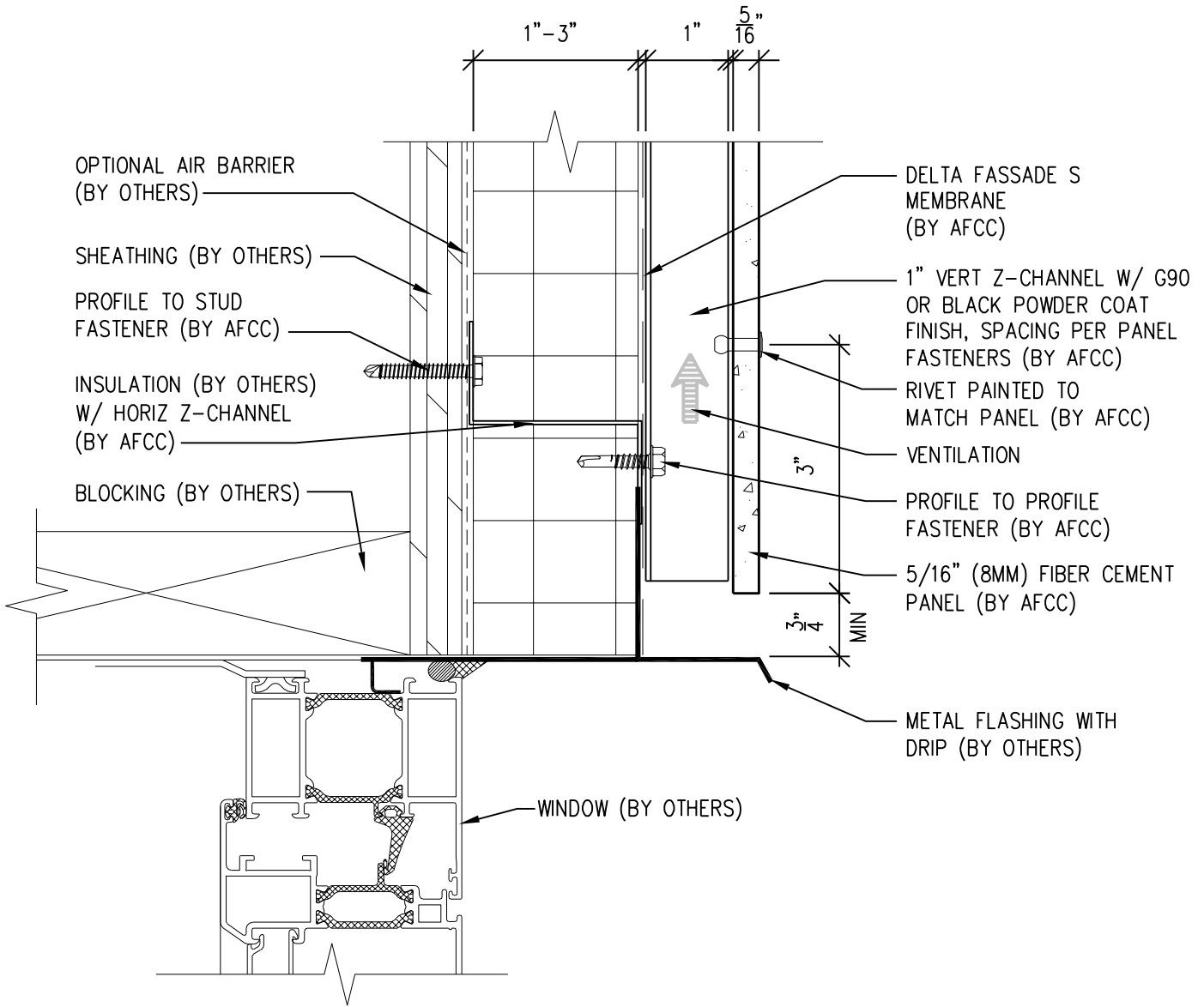
6901 S Pierce St #180, Littleton, CO 80128

Ref.:

Bottom of Panel @  
Window Head

Date: 11/04/2021

# Two-Layer Steel Attachment System



SCALE: 6" = 1'-0"

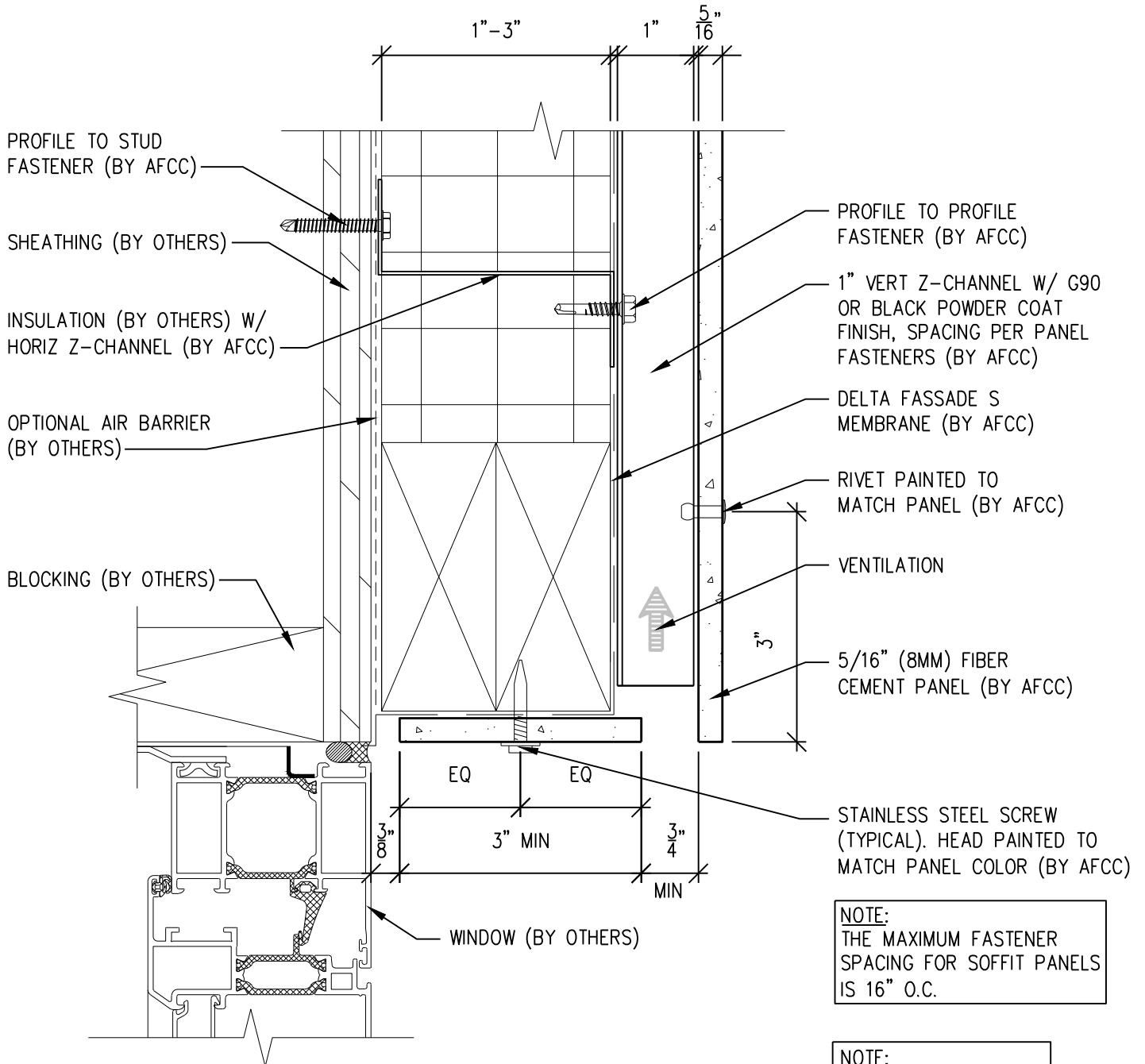
**NOTES:**

1. PANEL VERTICAL AND HORIZONTAL JOINT SPACING SHOULD BE 3/8" TYPICAL.


**American Fiber Cement Corporation**  
 (303) 972-5107  
[www.americanfibercement.com](http://www.americanfibercement.com)  
 6901 S Pierce St #180, Littleton, CO 80128

Ref.:  
 Bottom of Panel @  
 Window Head (Alternate)  
 Date: 11/04/2021

# Two-Layer Steel Attachment System



**NOTE:**  
THE MAXIMUM FASTENER SPACING FOR SOFFIT PANELS IS 16" O.C.

**NOTE:**  
IF FIBER CEMENT HEAD RETURN PANELS ARE LESS THAN 3" WIDE, ADHESIVE ATTACHMENT WILL BE REQUIRED.

**NOTES:**

1. PANEL VERTICAL AND HORIZONTAL JOINT SPACING SHOULD BE 3/8" TYPICAL.



SCALE: 6"=1'-0"



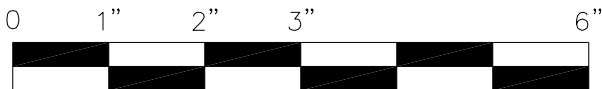
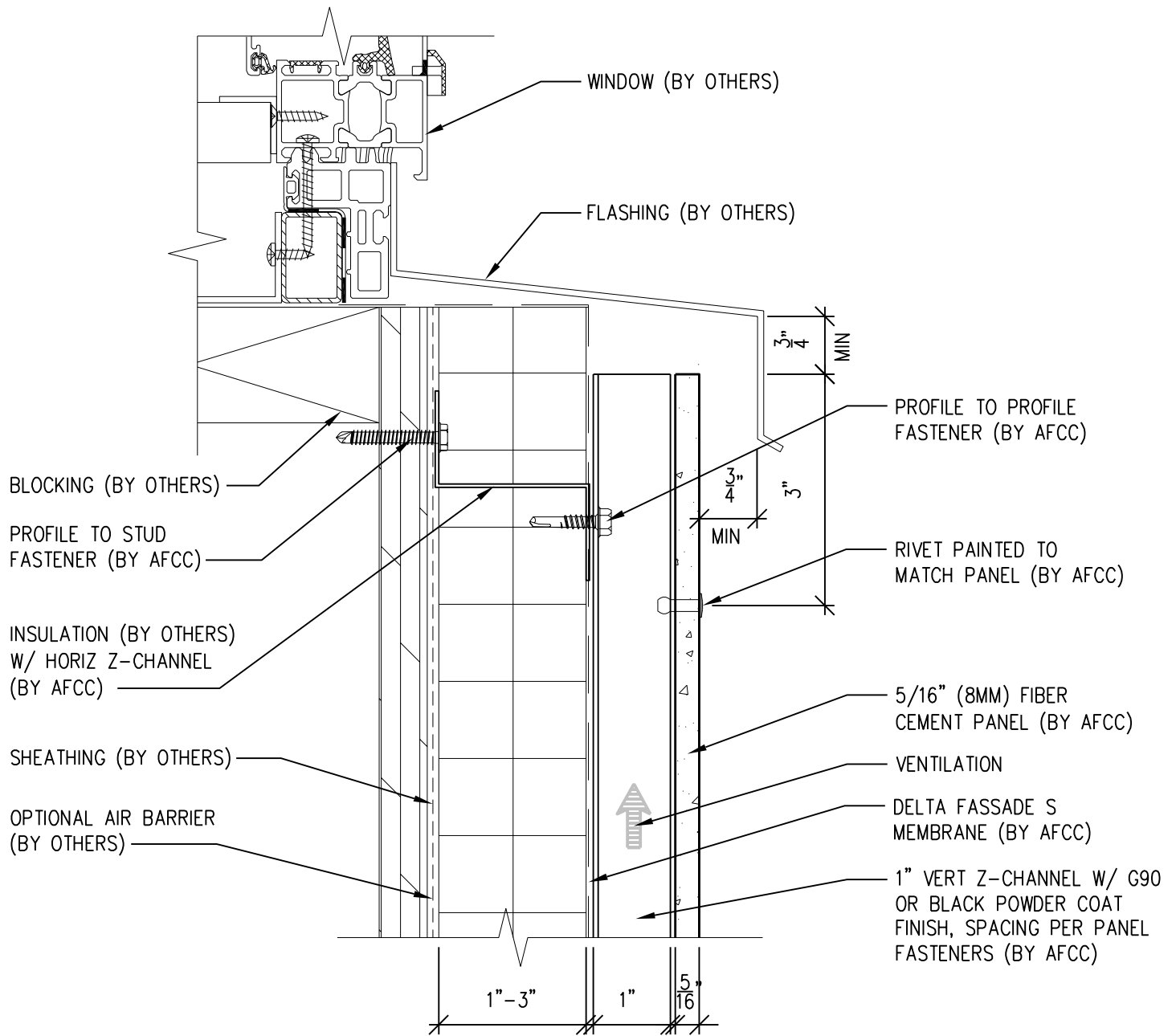
**American Fiber Cement Corporation** (303) 972-5107  
www.americanfibercement.com

Ref.: F.C.P. Return @ Window Head

Date: 11/19/2021

6901 S Pierce St #180, Littleton, CO 80128

# Two-Layer Steel Attachment System



SCALE: 6"=1'-0"

**NOTES:**

1. PANEL VERTICAL AND HORIZONTAL JOINT SPACING SHOULD BE 3/8" TYPICAL.



**American Fiber  
Cement Corporation**

(303) 972-5107

[www.americanfibercement.com](http://www.americanfibercement.com)

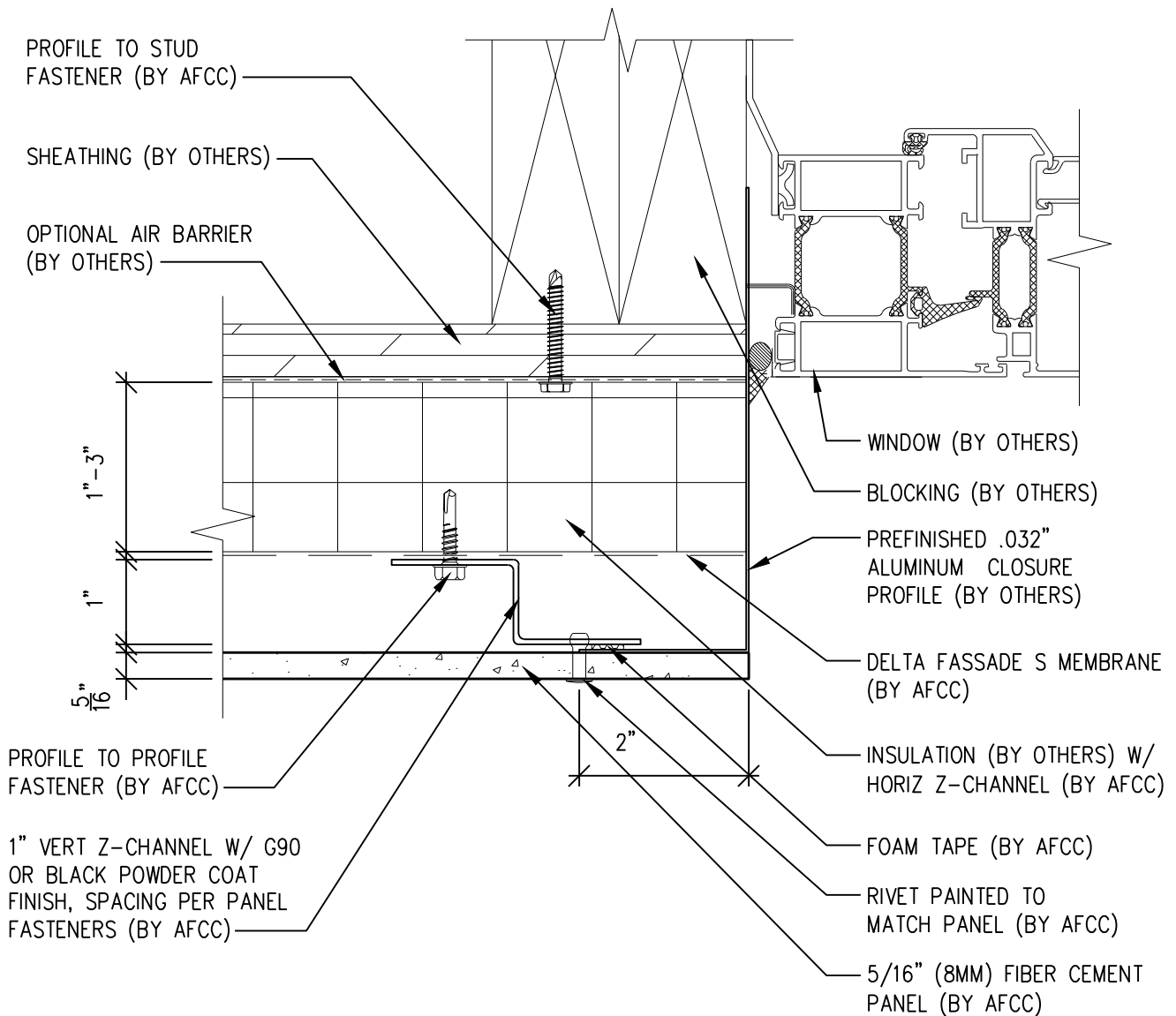
6901 S Pierce St #180, Littleton, CO 80128

Ref.:

Top of Panel @  
Window Sill

Date: 11/04/2021

# Two-Layer Steel Attachment System



SCALE: 6"=1'-0"

**NOTES:**

1. PANEL VERTICAL AND HORIZONTAL JOINT SPACING SHOULD BE 3/8" TYPICAL.



**American Fiber  
Cement Corporation**

(303) 972-5107

[www.americanfibercement.com](http://www.americanfibercement.com)

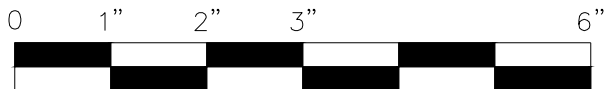
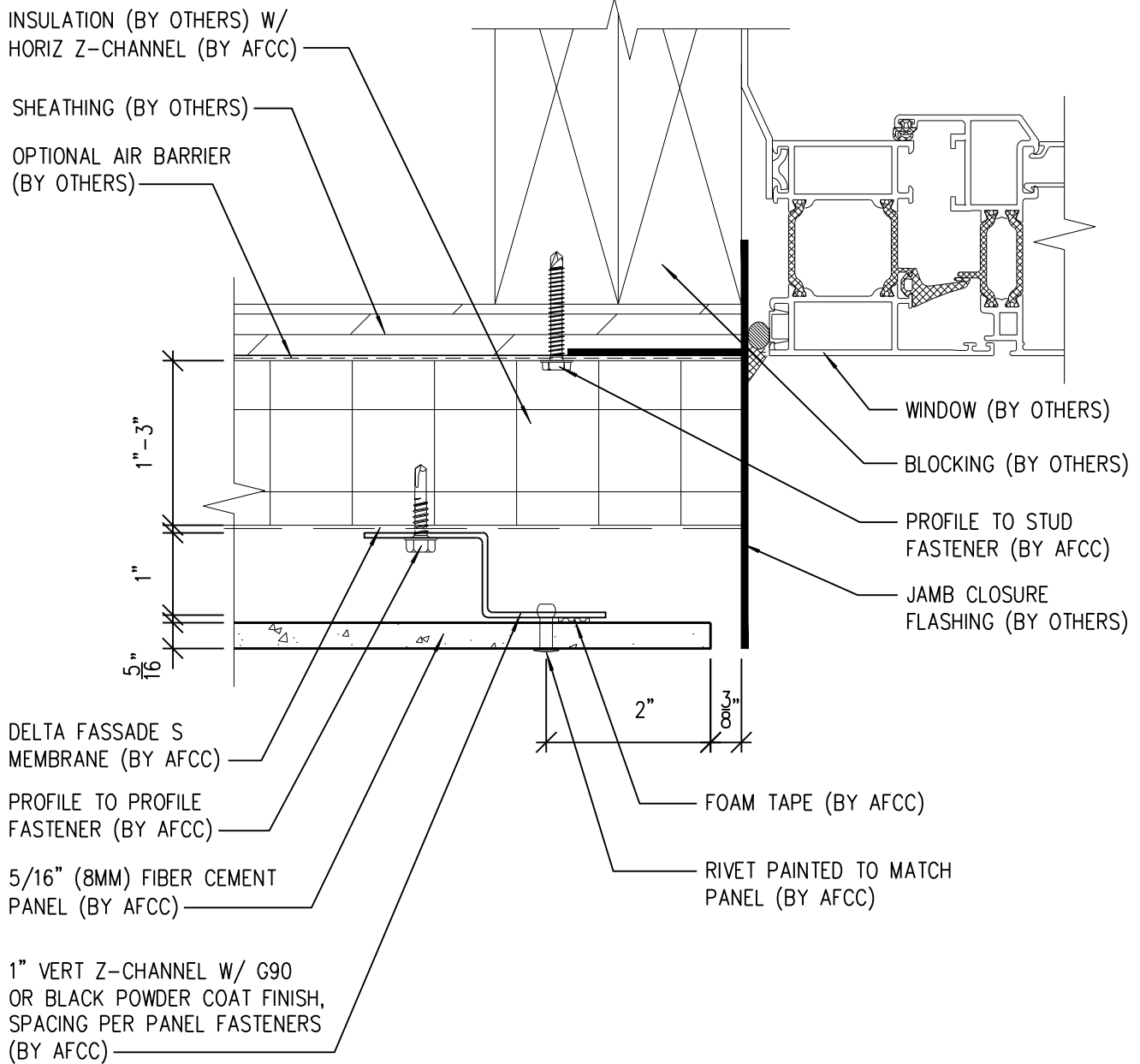
6901 S Pierce St #180, Littleton, CO 80128

Ref.:

Panel Edge @  
Window Jamb

Date: 11/04/2021

# Two-Layer Steel Attachment System



SCALE: 6"=1'-0"

**NOTES:**

1. PANEL VERTICAL AND HORIZONTAL JOINT SPACING SHOULD BE 3/8" TYPICAL.



**American Fiber  
Cement Corporation**

(303) 972-5107

[www.americanfibercement.com](http://www.americanfibercement.com)

Ref.:

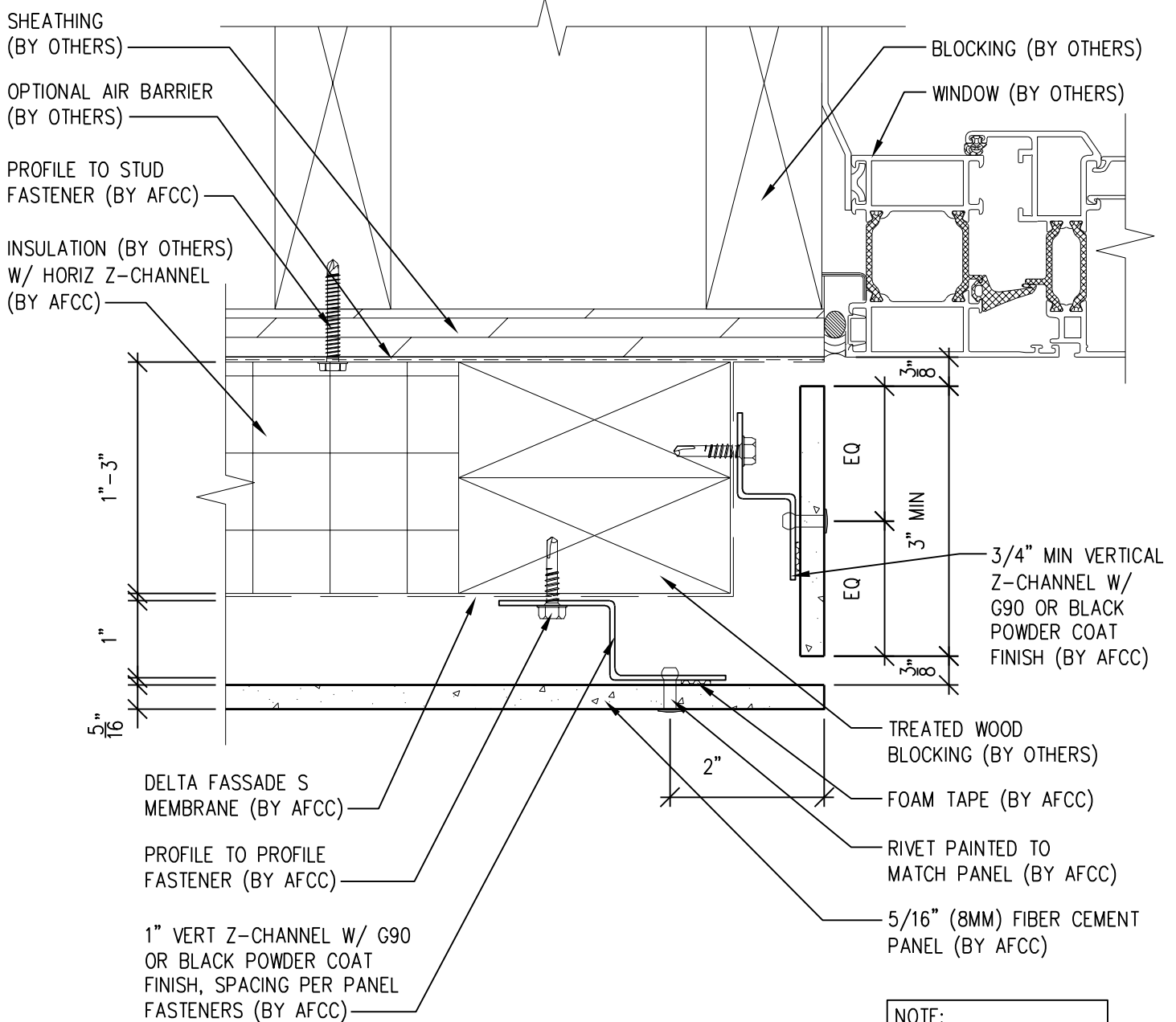
Panel Edge @  
Window Jamb (Alternate)

Date: 11/04/2021

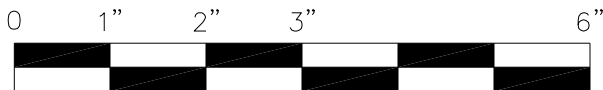
6901 S Pierce St #180, Littleton, CO 80128



# Two-Layer Steel Attachment System



**NOTE:**  
IF FIBER CEMENT JAMB RETURN PANELS ARE LESS THAN 3" WIDE, ADHESIVE ATTACHMENT WILL BE REQUIRED.



SCALE: 6" = 1'-0"

**NOTES:**

1. PANEL VERTICAL AND HORIZONTAL JOINT SPACING SHOULD BE 3/8" TYPICAL.



**American Fiber Cement Corporation** www.americanfibercement.com

(303) 972-5107

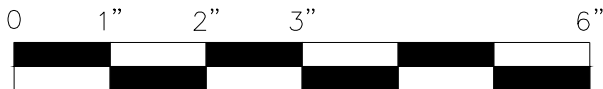
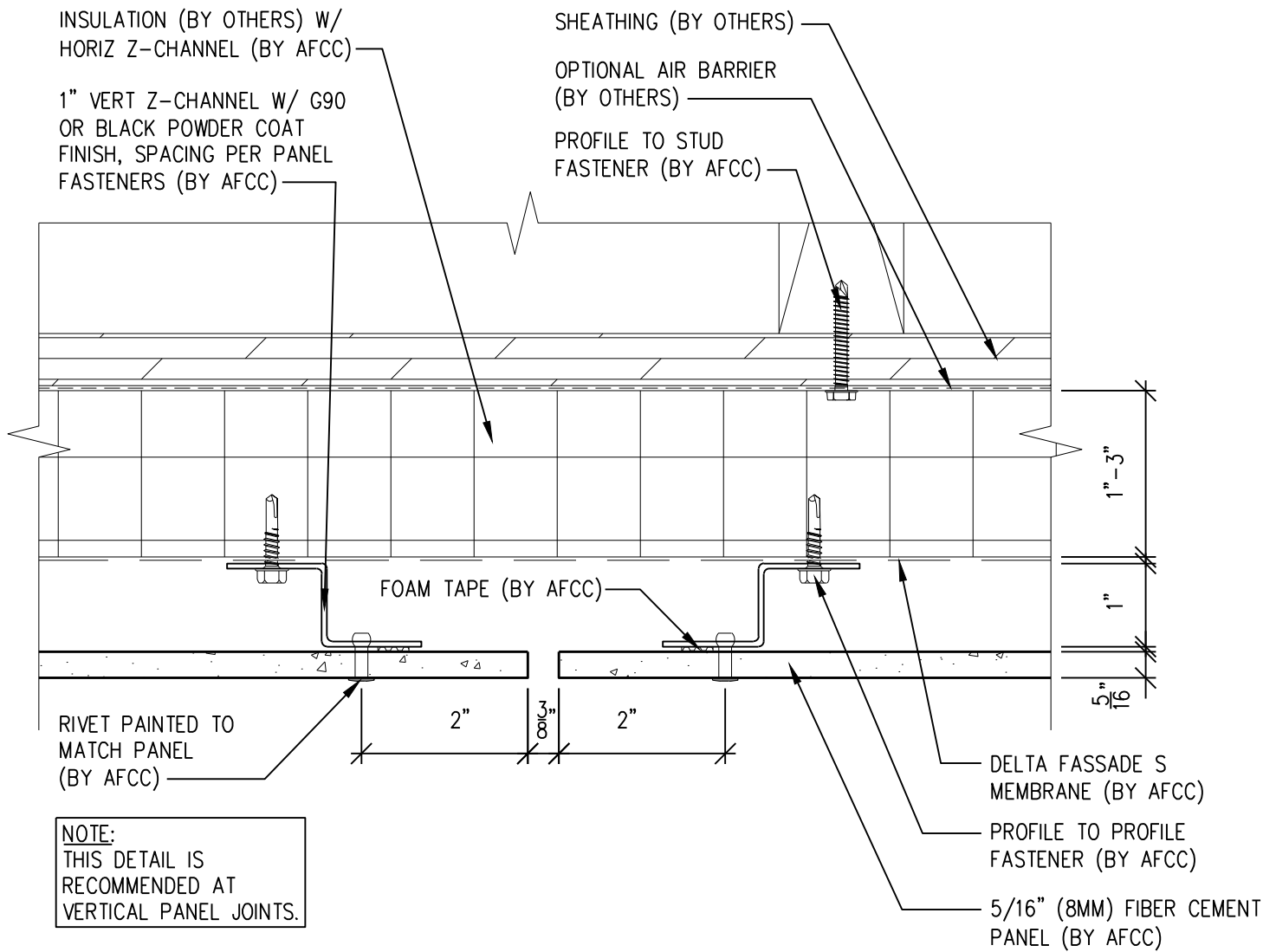
6901 S Pierce St #180, Littleton, CO 80128

Ref.:

F.C.P. Return @ Window Jamb

Date: 11/04/2021

# Two-Layer Steel Attachment System



SCALE: 6"=1'-0"

**NOTES:**

1. PANEL VERTICAL AND HORIZONTAL JOINT SPACING SHOULD BE 3/8" TYPICAL.



**American Fiber  
Cement Corporation** [www.americanfibercement.com](http://www.americanfibercement.com)

(303) 972-5107

6901 S Pierce St #180, Littleton, CO 80128

Ref.:

Vertical Panel Joint  
Option 1

Date: 11/19/2021

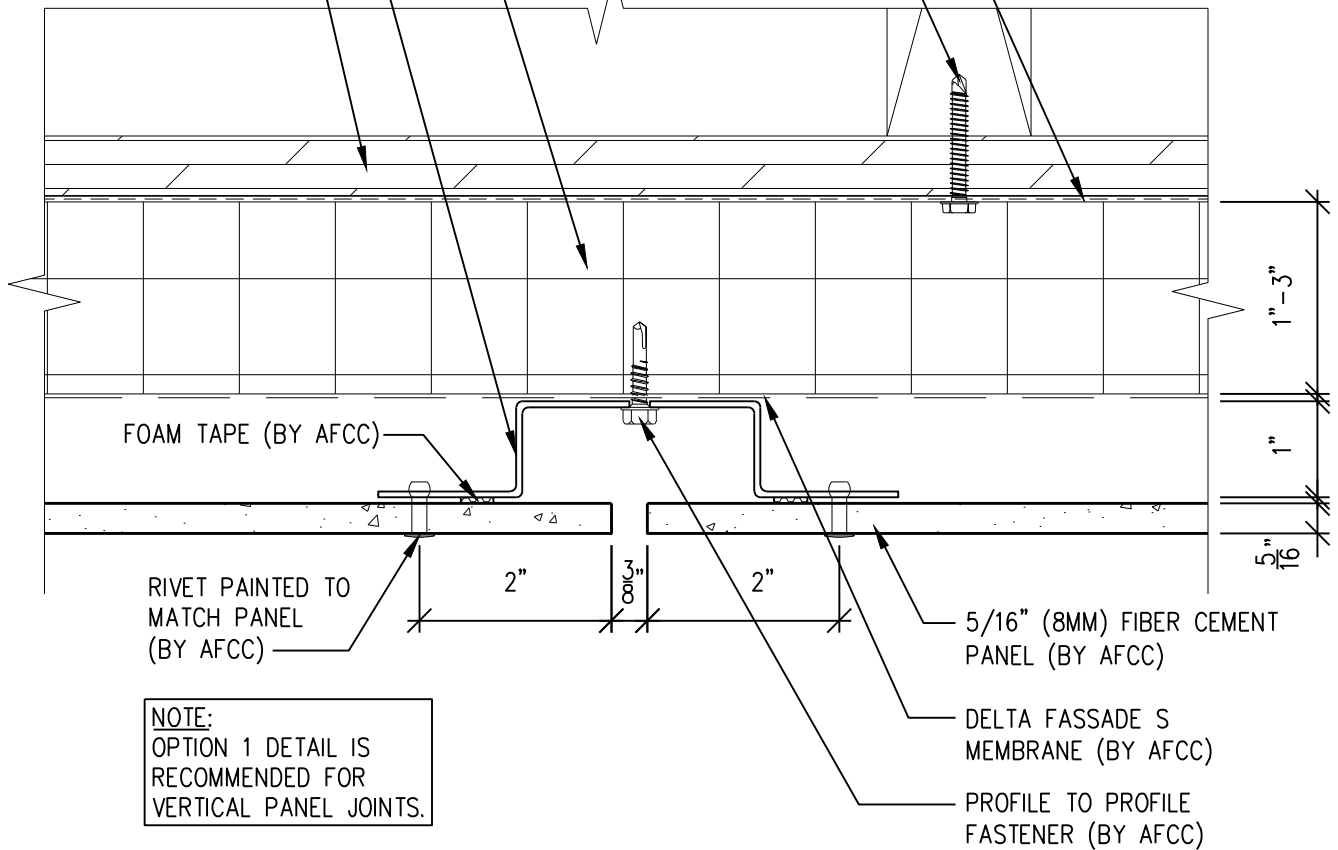
# Two-Layer Steel Attachment System

INSULATION (BY OTHERS) W/  
HORIZ Z-CHANNEL (BY AFCC)

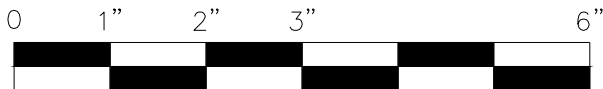
1" VERT HAT-CHANNEL W/  
G90 OR BLACK POWDER COAT  
FINISH, SPACING PER PANEL  
FASTENERS (BY OTHERS)

SHEATHING (BY OTHERS)

OPTIONAL AIR BARRIER  
(BY OTHERS)  
PROFILE TO STUD  
FASTENER (BY AFCC)



**NOTE:**  
OPTION 1 DETAIL IS  
RECOMMENDED FOR  
VERTICAL PANEL JOINTS.



SCALE: 6"=1'-0"

**NOTES:**

1. PANEL VERTICAL AND HORIZONTAL JOINT SPACING SHOULD BE 3/8" TYPICAL.



**American Fiber  
Cement Corporation** [www.americanfibercement.com](http://www.americanfibercement.com)

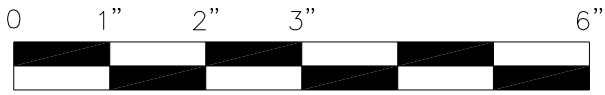
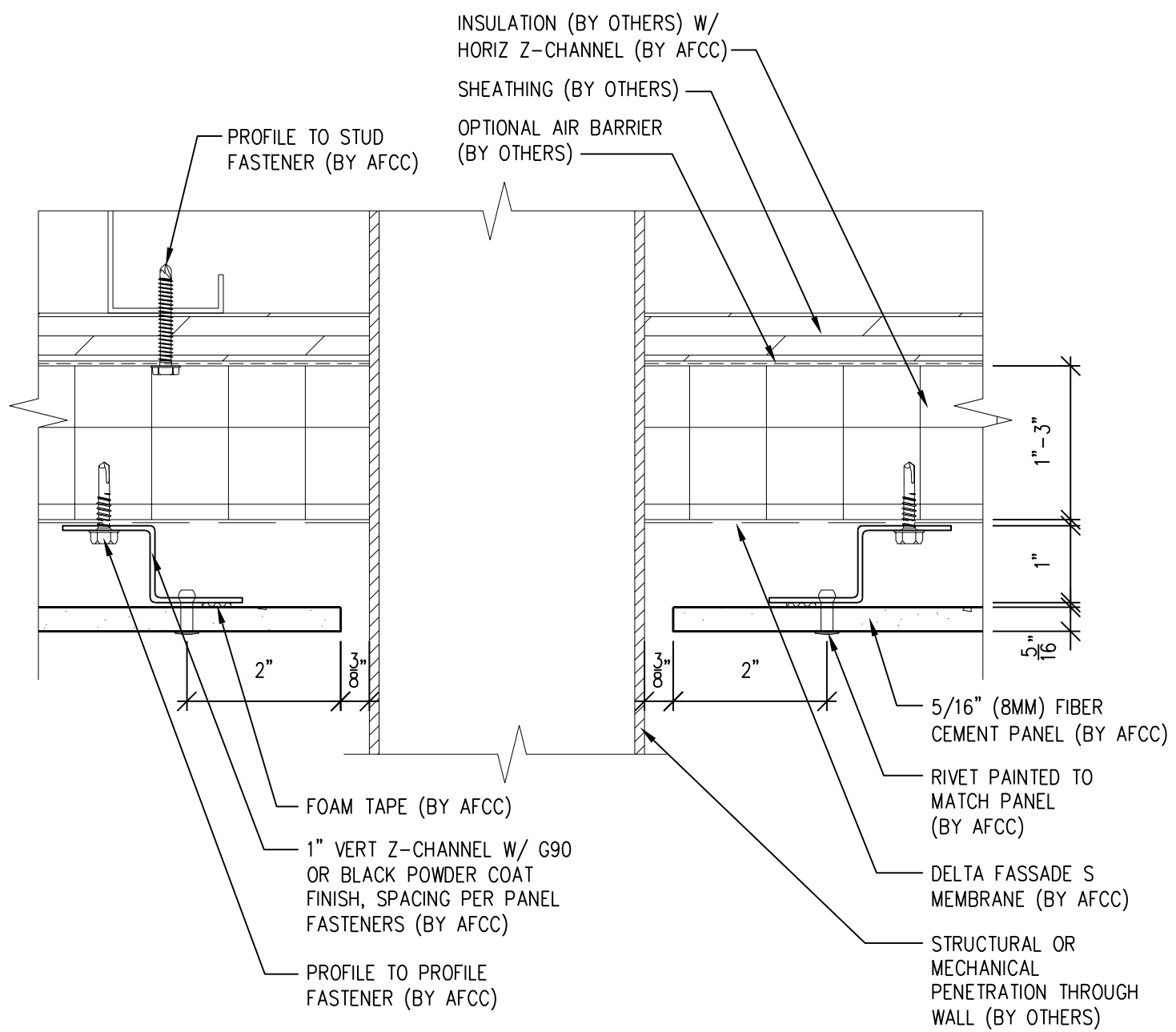
(303) 972-5107

6901 S Pierce St #180, Littleton, CO 80128

Ref.:  
**Vertical Panel Joint  
Option 2**

Date: 11/19/2021

# Two-Layer Steel Attachment System



SCALE: 6" = 1' - 0"

**NOTES:**

1. PANEL VERTICAL AND HORIZONTAL JOINT SPACING SHOULD BE 3/8" TYPICAL.



**American Fiber Cement Corporation** www.americanfibercement.com

(303) 972-5107

6901 S Pierce St #180, Littleton, CO 80128

Ref.:  
**Vertical Panel Break @  
Penetration**

Date: 11/04/2021

# Two-Layer Steel Attachment System

PROFILE TO STUD  
FASTENER (BY AFCC)

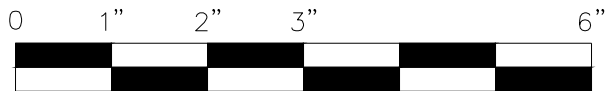
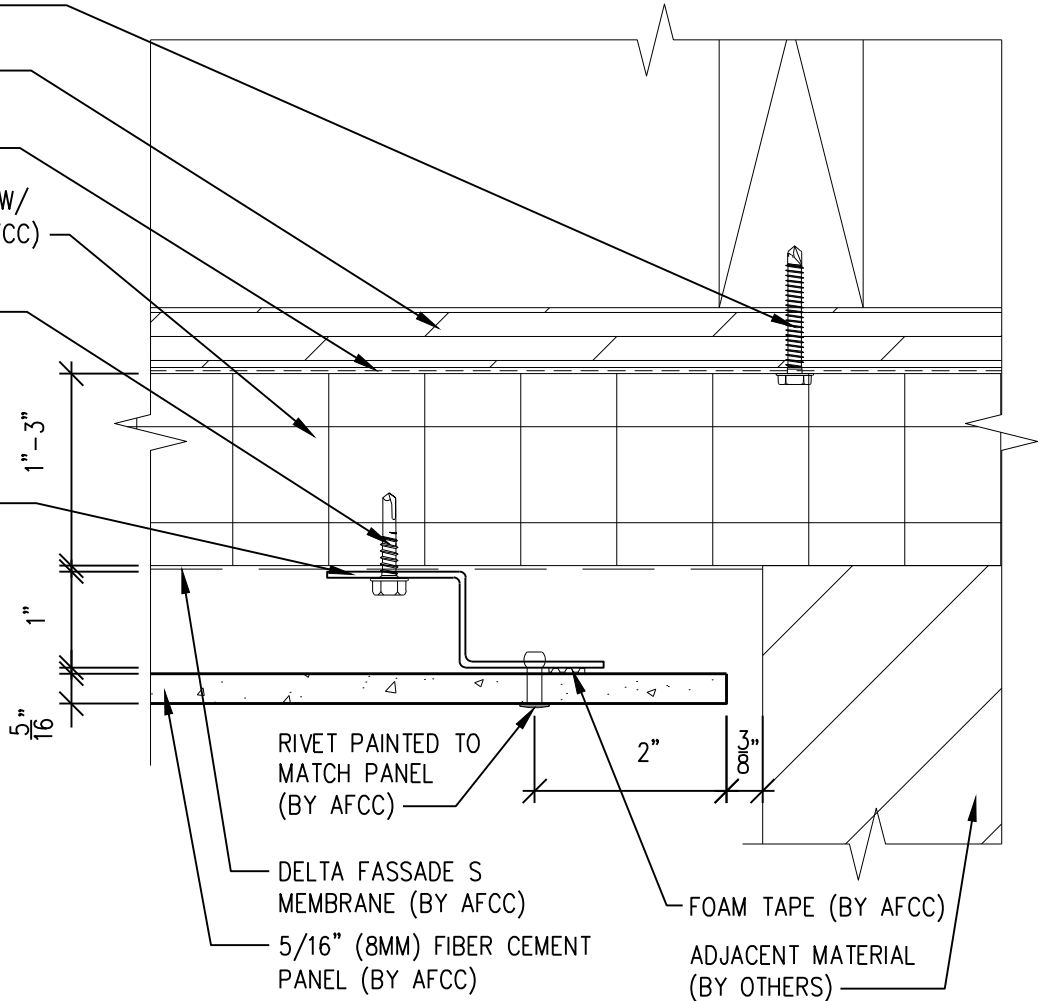
SHEATHING (BY OTHERS)

OPTIONAL AIR BARRIER  
(BY OTHERS)

INSULATION (BY OTHERS) W/  
HORIZ Z-CHANNEL (BY AFCC)

PROFILE TO PROFILE  
FASTENER (BY AFCC)

1" VERT Z-CHANNEL W/  
G90 OR BLACK POWDER  
COAT FINISH, SPACING  
PER PANEL FASTENERS  
(BY AFCC)



SCALE: 6"=1'-0"

**NOTES:**

1. PANEL VERTICAL AND HORIZONTAL JOINT SPACING SHOULD BE 3/8" TYPICAL.



**American Fiber  
Cement Corporation**

(303) 972-5107

[www.americanfibercement.com](http://www.americanfibercement.com)

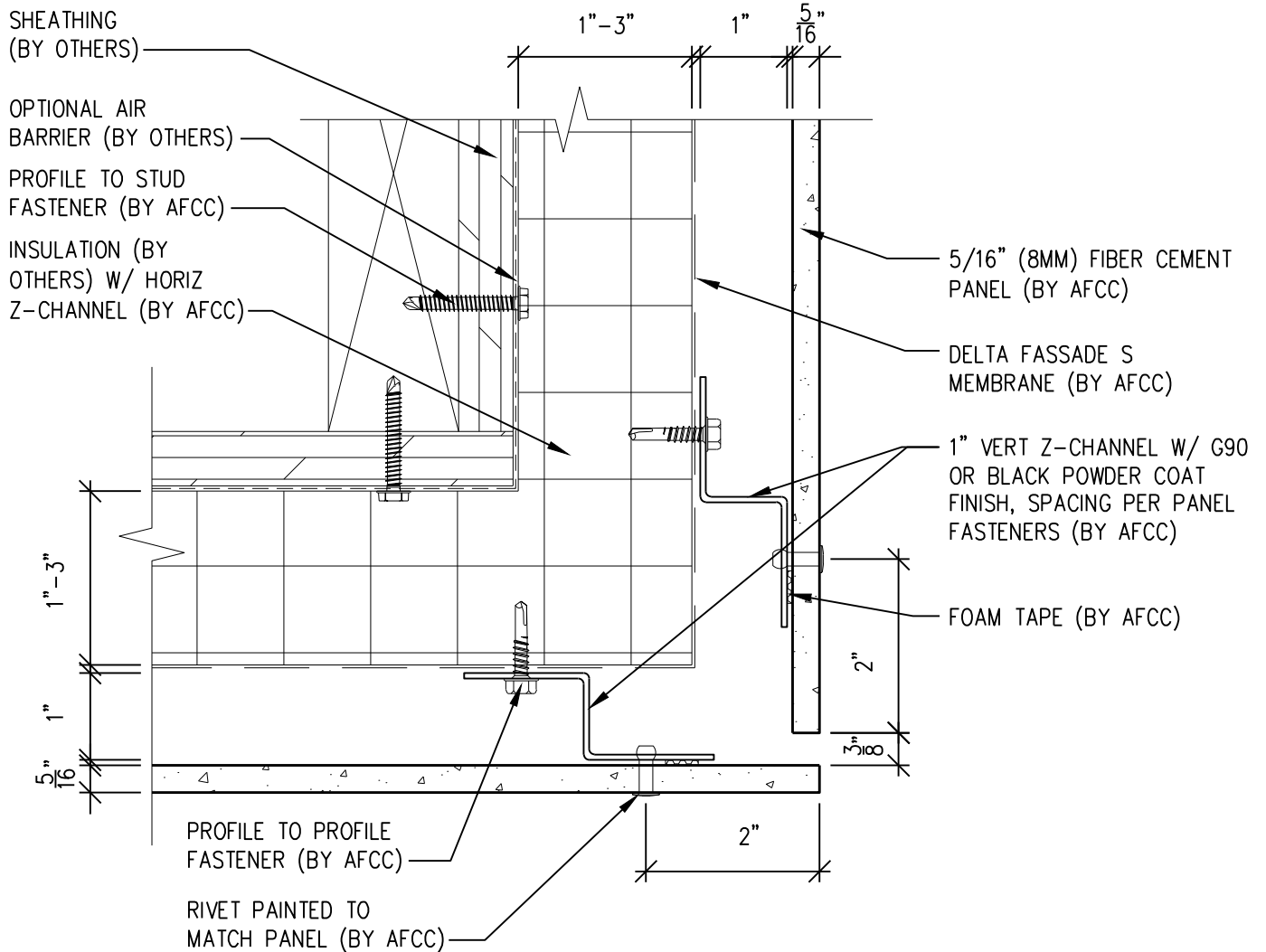
6901 S Pierce St #180, Littleton, CO 80128

Ref.:

Panel Edge @  
Butt Joint

Date: 11/04/2021

# Two-Layer Steel Attachment System



**NOTES:**

1. PANEL VERTICAL AND HORIZONTAL JOINT SPACING SHOULD BE 3/8" TYPICAL.



SCALE: 6"=1'-0"



**American Fiber  
Cement Corporation**

(303) 972-5107

[www.americanfibercement.com](http://www.americanfibercement.com)

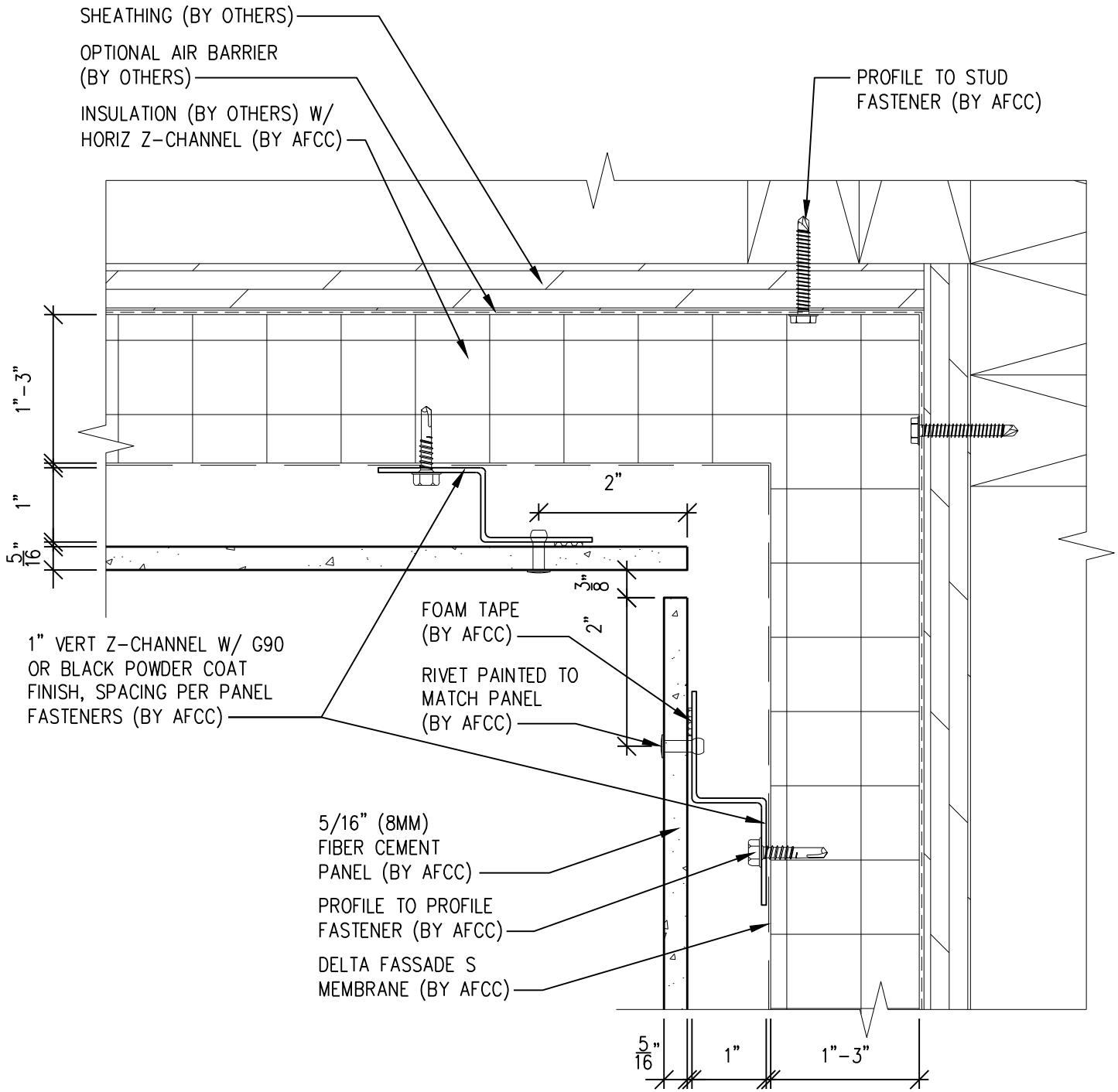
6901 S Pierce St #180, Littleton, CO 80128

Ref.:

**Panels @  
Outside Corner**

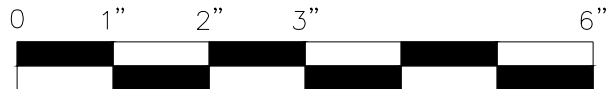
Date: 11/04/2020

# Two-Layer Steel Attachment System



**NOTES:**

1. PANEL VERTICAL AND HORIZONTAL JOINT SPACING SHOULD BE 3/8" TYPICAL.



SCALE: 6"=1'-0"



**American Fiber  
Cement Corporation**

(303) 972-5107

[www.americanfibercement.com](http://www.americanfibercement.com)

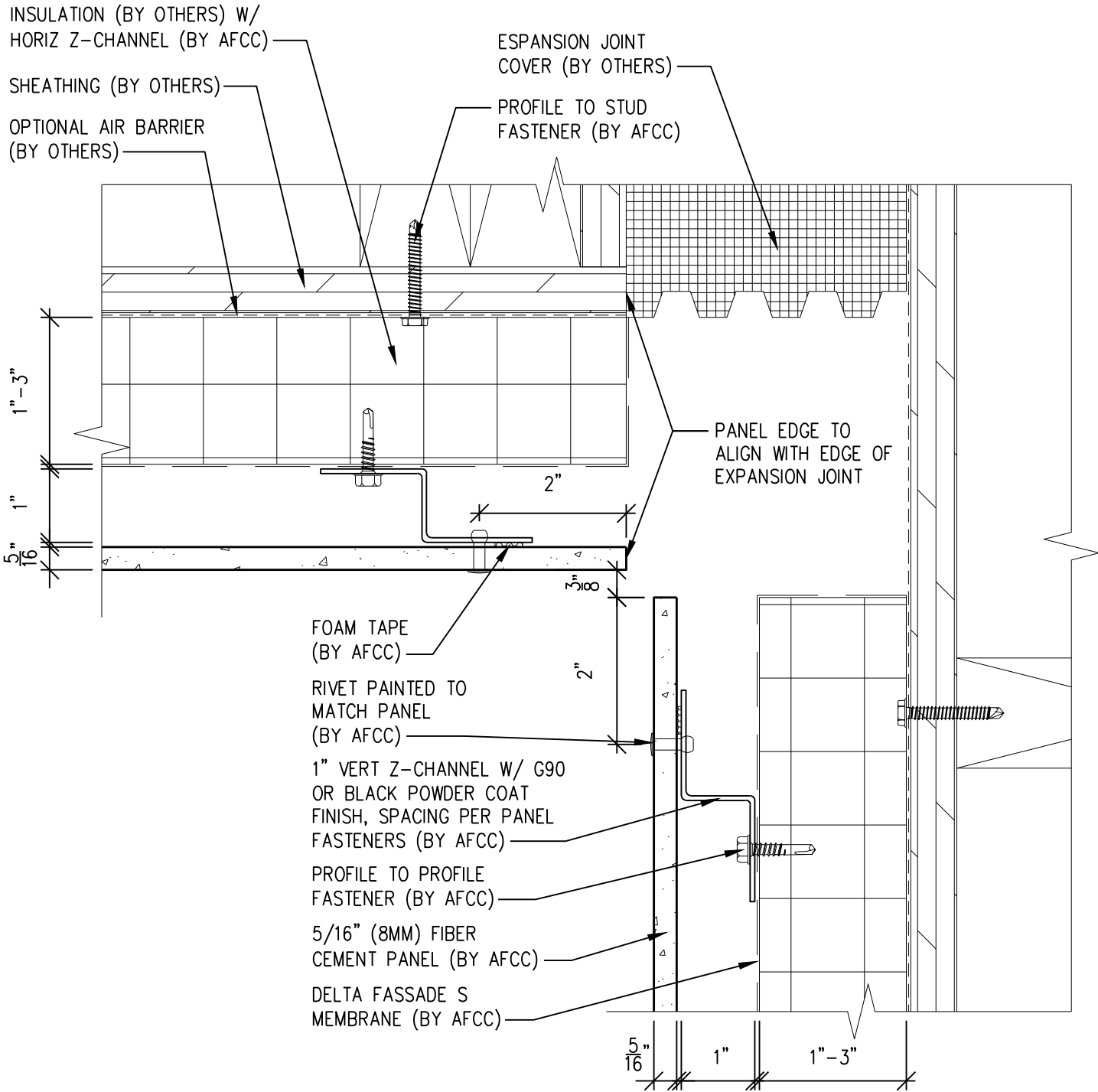
6901 S Pierce St #180, Littleton, CO 80128

Ref.:

**Panels @  
Inside Corner**

Date: 11/04/2021

# Two-Layer Steel Attachment System



**NOTES:**

1. PANEL VERTICAL AND HORIZONTAL JOINT SPACING SHOULD BE 3/8" TYPICAL.



SCALE: 6"=1'-0"



**American Fiber  
Cement Corporation**

(303) 972-5107  
www.americanfibercement.com

6901 S Pierce St #180, Littleton, CO 80128

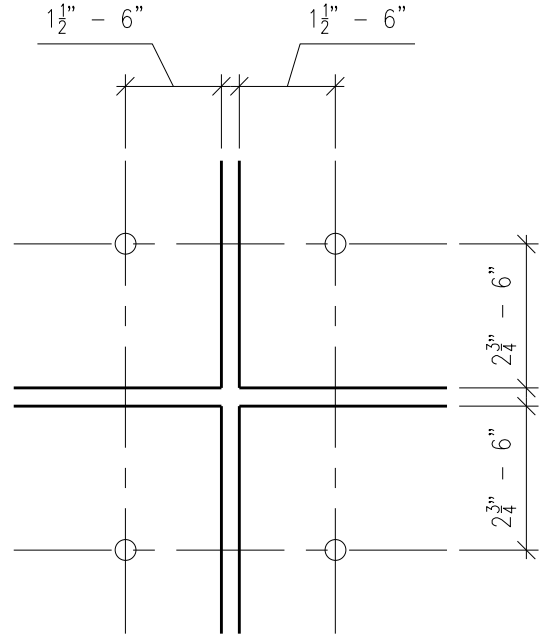
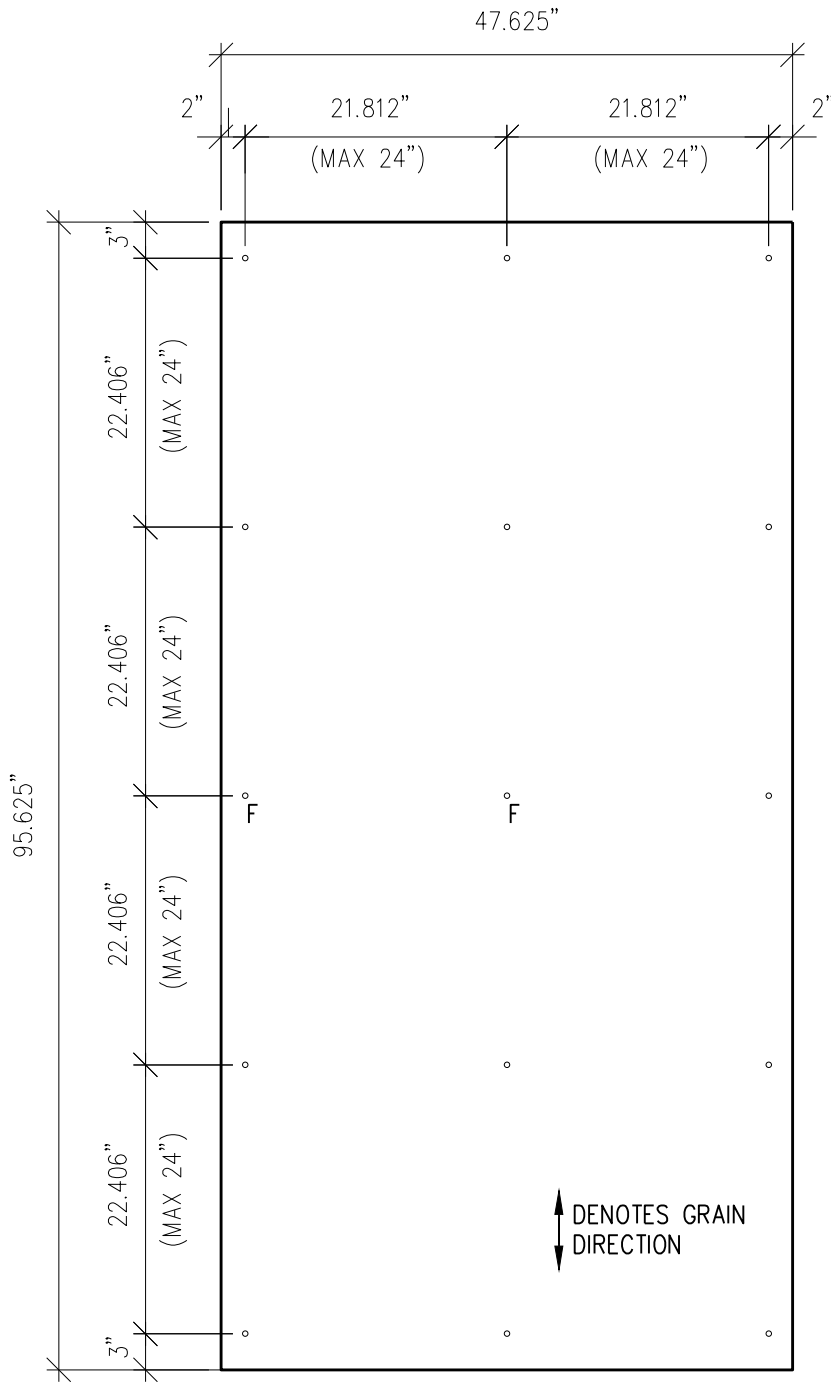
Ref.:

Expansion Joint @  
Inside Corner

Date: 11/04/2021



# Two-Layer Steel Attachment System



**TYP PANEL EDGE FASTENER**  
3"=1'-0"

**DRILLING KEY:**

F = FIXED POINT 21/64"  
UNMARKED HOLE = GLIDING POINT 7/16"



SCALE: 3/4"=1'-0"

**NOTES:**

1. PANEL VERTICAL AND HORIZONTAL JOINT SPACING SHOULD BE 3/8" TYPICAL.



**American Fiber  
Cement Corporation**

(303) 972-5107

[www.americanfibercement.com](http://www.americanfibercement.com)

Ref.:

Typical  
Fastener Layout

Date: 11/10/2021

6901 S Pierce St #180, Littleton, CO 80128