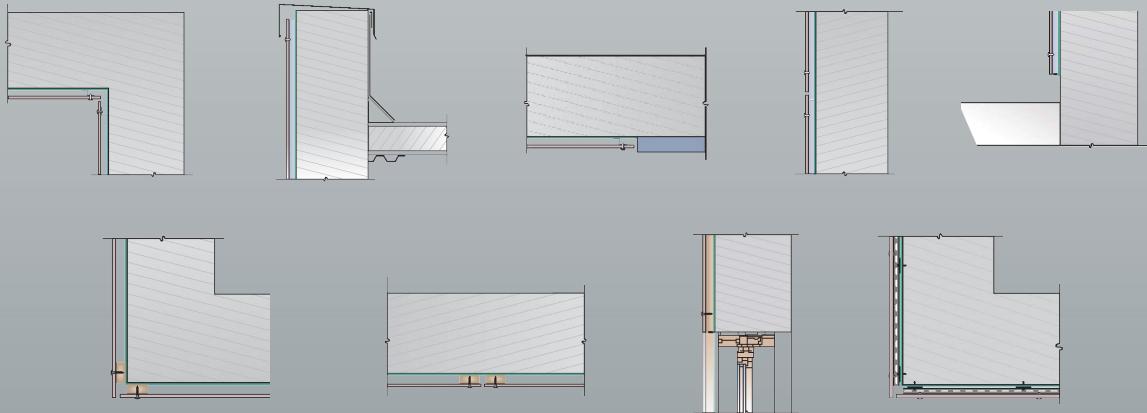


Two-Layer Steel and SMARTci Green Girt Attachment System with Rivets



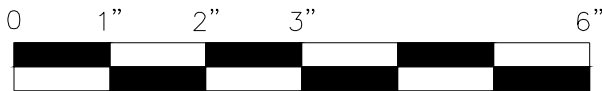
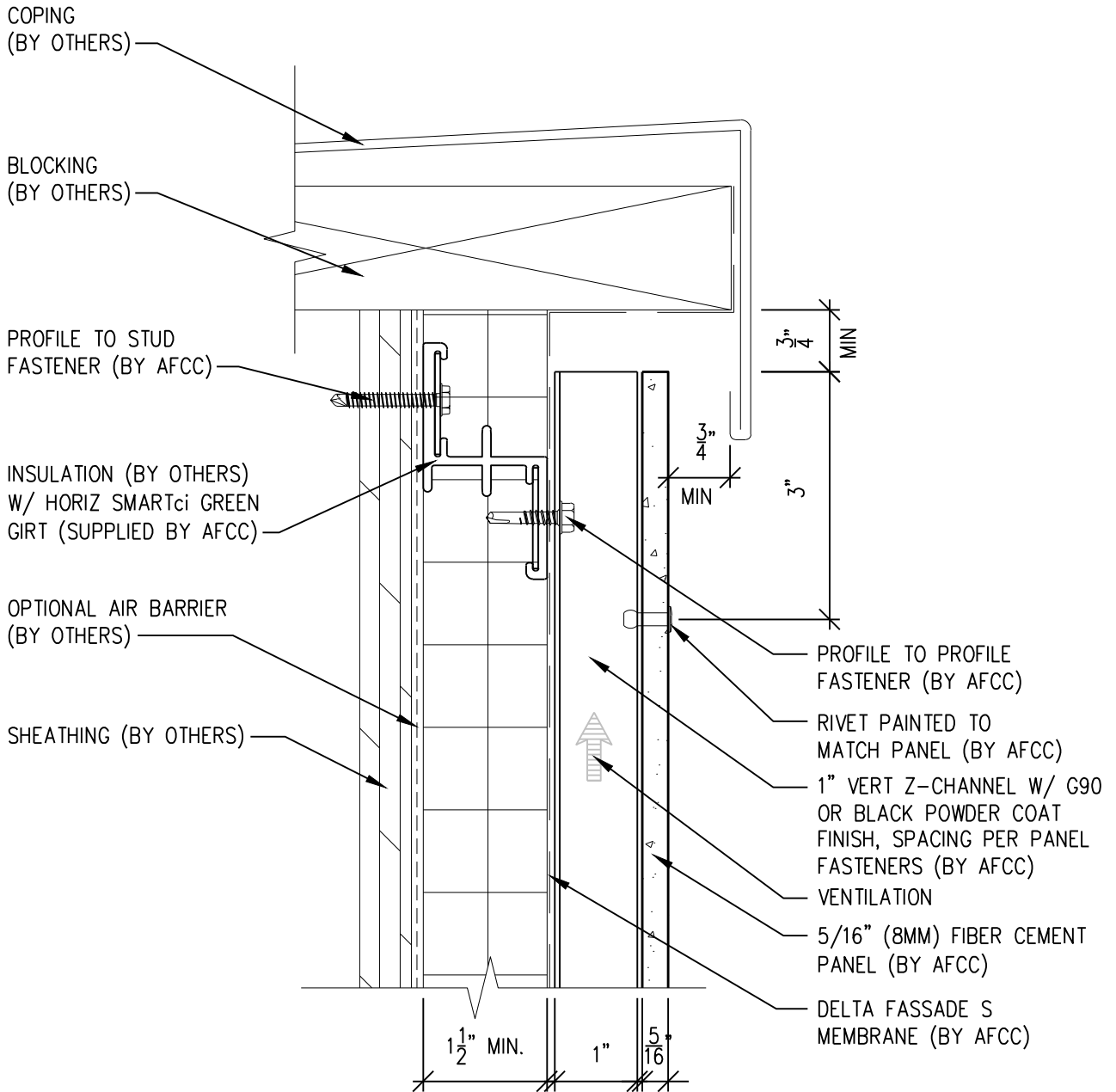


American Fiber Cement Corporation

Typical Details

- Page 3: Top Panel @ Coping
- Page 4: Top Panel @ Soffit
- Page 5: Top of Panel @ F.C.P Soffit
- Page 6: Horizontal Joint @ Continuous Substrate
- Page 7: Horizontal Joint @ Break In Substrate
- Page 8: Horizontal Joint @ Expansion Joint
- Page 9: Horizontal Panel Break @ Penetration
- Page 10: Bottom of Panel @ Wall Base
- Page 11: Bottom of Panel @ Open Termination
- Page 12: Bottom of Panel @ Low Roof Flashing
- Page 13: Bottom of Panel @ Soffit
- Page 14: Bottom of Panel @ Soffit (Alternate)
- Page 15: Bottom of Panel @ F.C.P. Soffit
- Page 16: Bottom of Panel @ F.C.P Soffit (Alternate)
- Page 17: Soffit Termination @ Adjacent Material
- Page 18: Bottom of Panel @ Window Head
- Page 19: Bottom of Panel @ Window Head (Alternate)
- Page 20: F.C.P Return @ Window Head
- Page 21: Top of Panel @ Window Sill
- Page 22: Panel Edge @ Window Jamb
- Page 23: Panel Edge @ Window Jamb (Alternate)
- Page 24: F.C.P Return @ Window Jamb
- Page 25: Vertical Panel Joint Option 1
- Page 26: Vertical Panel Joint Option 2
- Page 27: Vertical Panel Break @ Penetration
- Page 28: Panel Edge @ Butt Joint
- Page 29: Panels @ Outside Corner
- Page 30: Panels @ Inside Corner
- Page 31: Expansion Joint @ Inside Corner
- Page 32: Typical Fastener Layout

Two-Layer Steel Attachment System with SMARTci Green Girt



SCALE: 6"=1'-0"

NOTES:

1. PANEL VERTICAL AND HORIZONTAL JOINT SPACING SHOULD BE 3/8" TYPICAL.



**American Fiber
Cement Corporation**

(303) 972-5107

www.americanfibercement.com

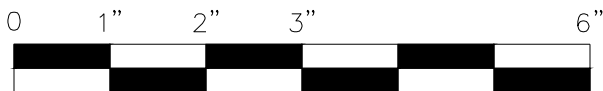
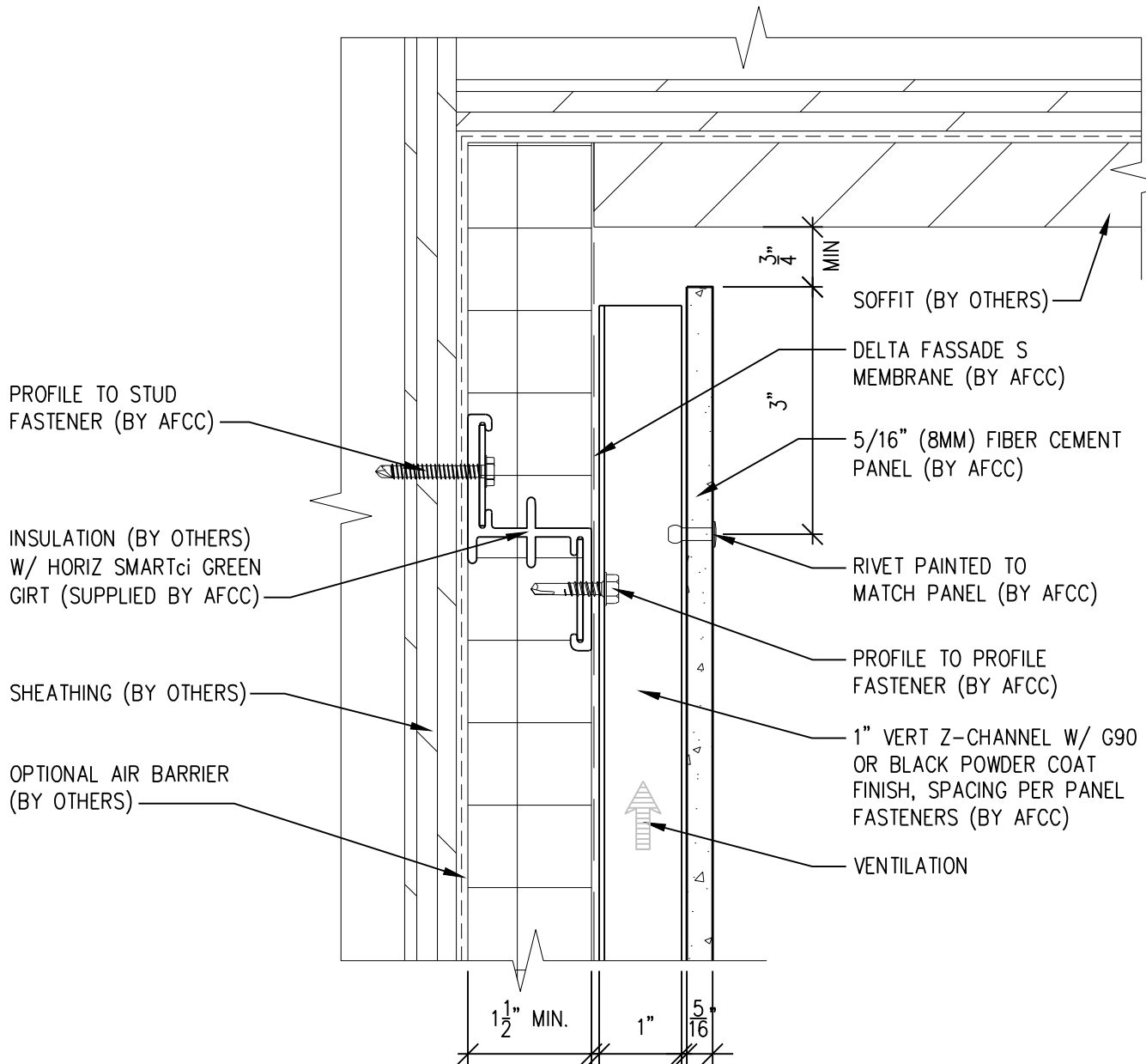
6901 S Pierce St #180, Littleton, CO 80128

Ref.:

Top of Panel @
Coping

Date: 11/19/2021

Two-Layer Steel Attachment System with SMARTci Green Girt



SCALE: 6" = 1'-0"

NOTES:

1. PANEL VERTICAL AND HORIZONTAL JOINT SPACING SHOULD BE 3/8" TYPICAL.



American Fiber Cement Corporation www.americanfibercement.com

(303) 972-5107

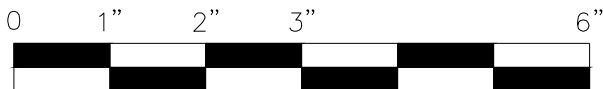
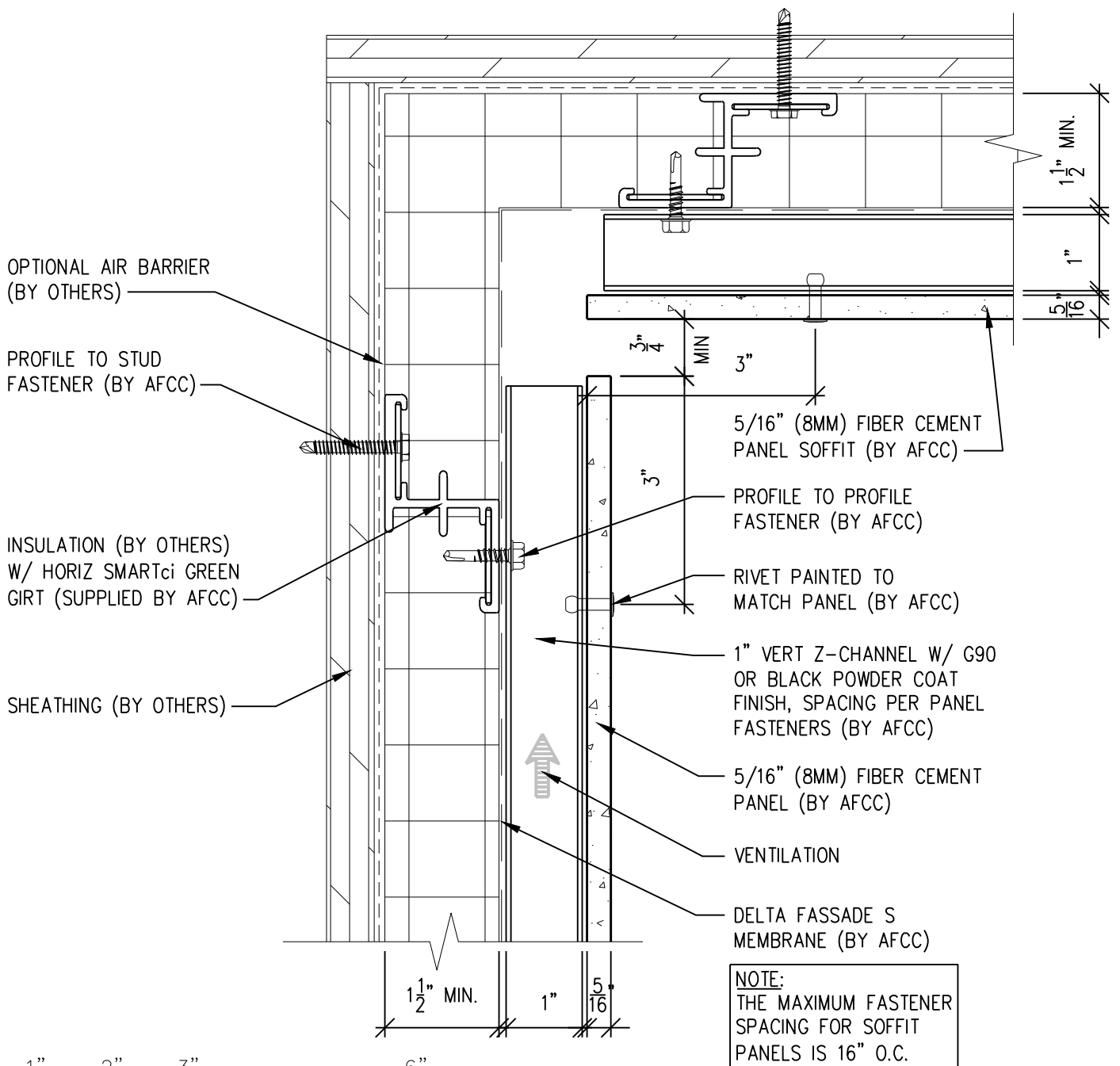
6901 S Pierce St #180, Littleton, CO 80128

Ref.:

Top of Panel @
Soffit

Date: 11/19/2021

Two-Layer Steel Attachment System with SMARTci Green Girt



SCALE: 6"=1'-0"

NOTES:

1. PANEL VERTICAL AND HORIZONTAL JOINT SPACING SHOULD BE 3/8" TYPICAL.



**American Fiber
Cement Corporation**

(303) 972-5107

www.americanfibercement.com

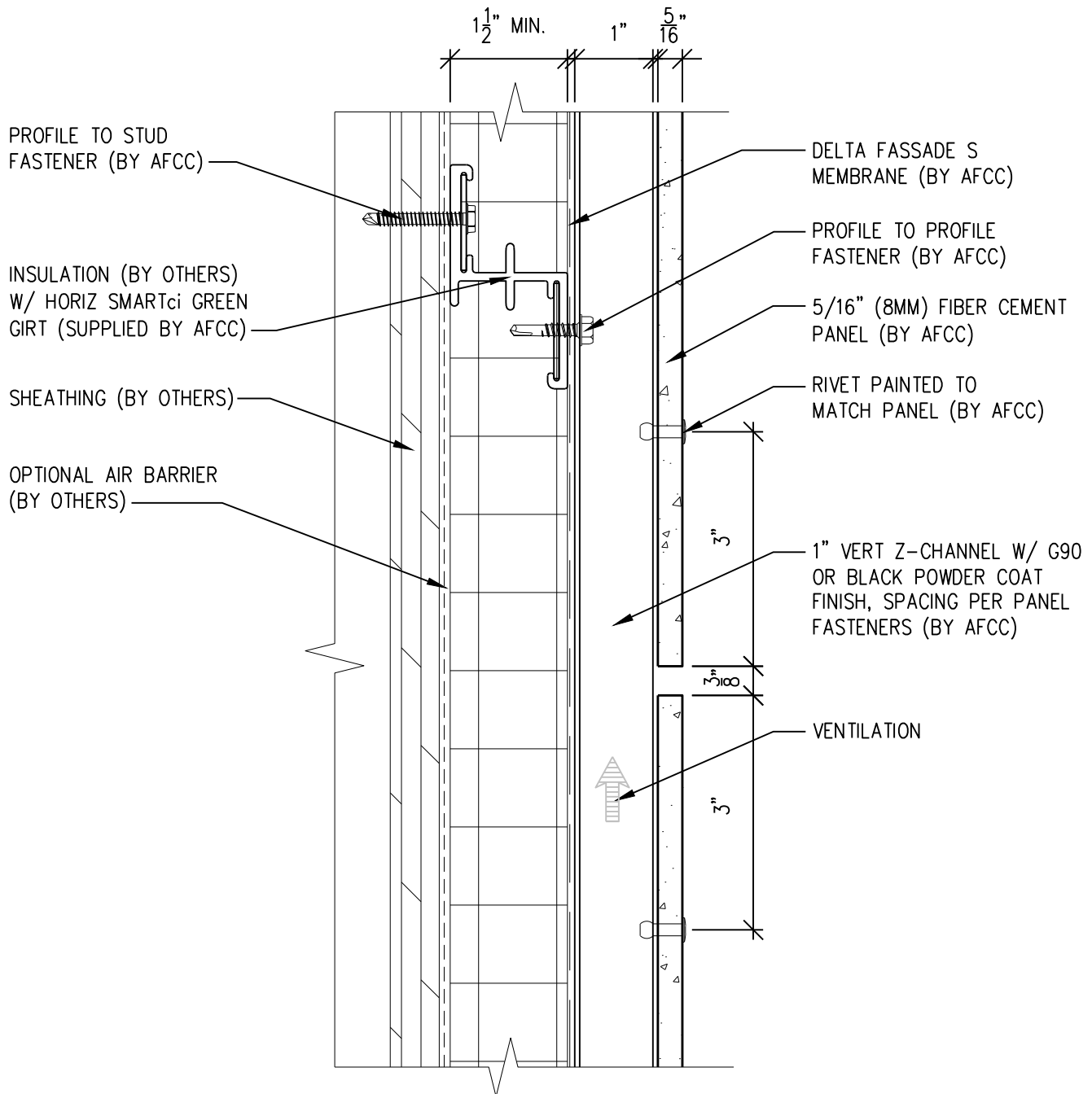
6901 S Pierce St #180, Littleton, CO 80128

Ref.:

Top of Panel @
F.C.P. Soffit

Date: 11/19/2021

Two-Layer Steel Attachment System with SMARTci Green Girt



SCALE: 6" = 1'-0"

NOTES:

1. PANEL VERTICAL AND HORIZONTAL JOINT SPACING SHOULD BE 3/8" TYPICAL.



American Fiber Cement Corporation (303) 972-5107
www.americanfibercement.com

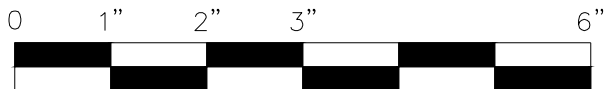
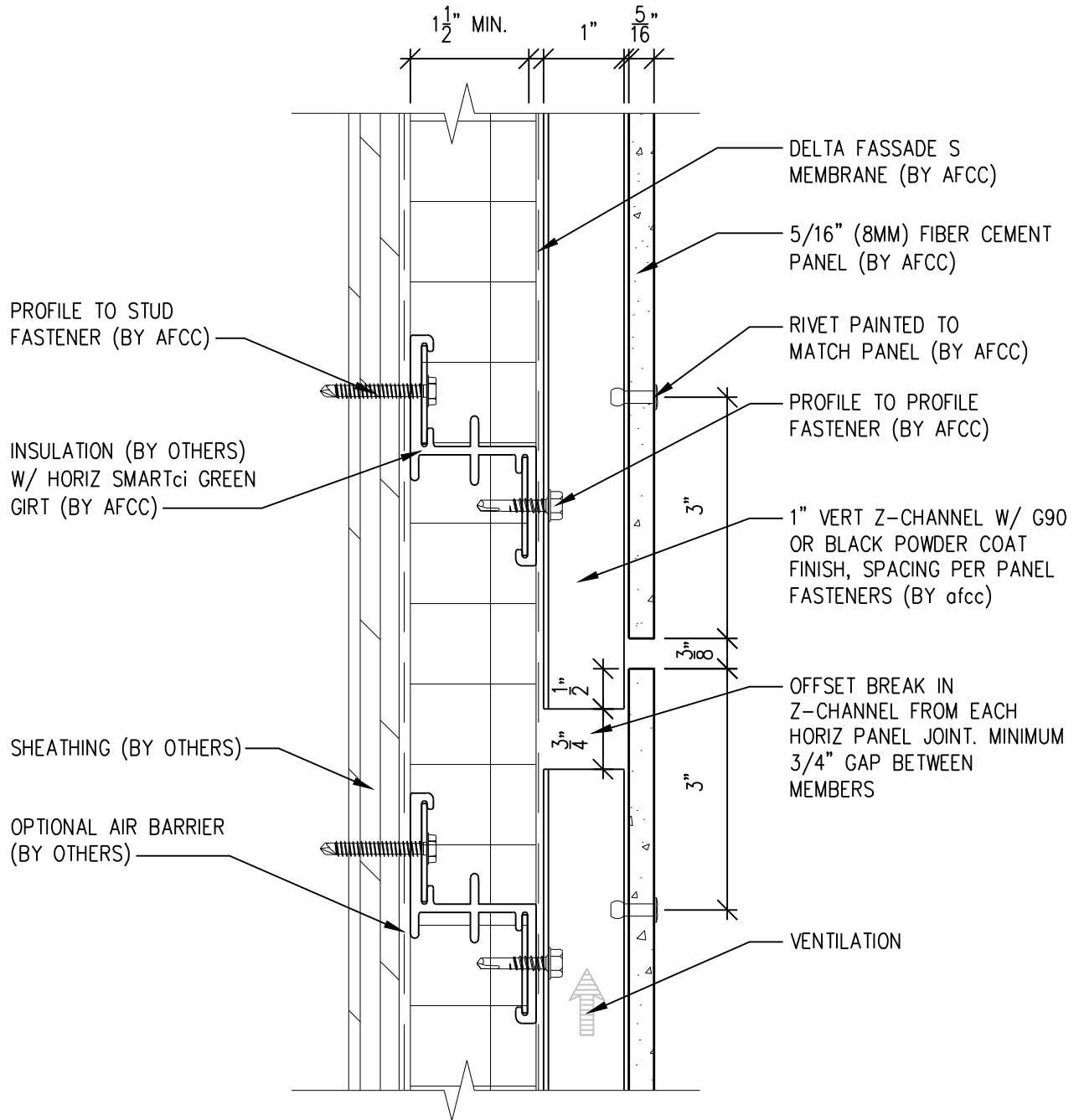
6901 S Pierce St #180, Littleton, CO 80128

Ref.:

Horizontal Joint @
Continuous Substrate

Date: 11/19/2021

Two-Layer Steel Attachment System with SMARTci Green Girt



SCALE: 6"=1'-0"

NOTES:

1. PANEL VERTICAL AND HORIZONTAL JOINT SPACING SHOULD BE 3/8" TYPICAL.



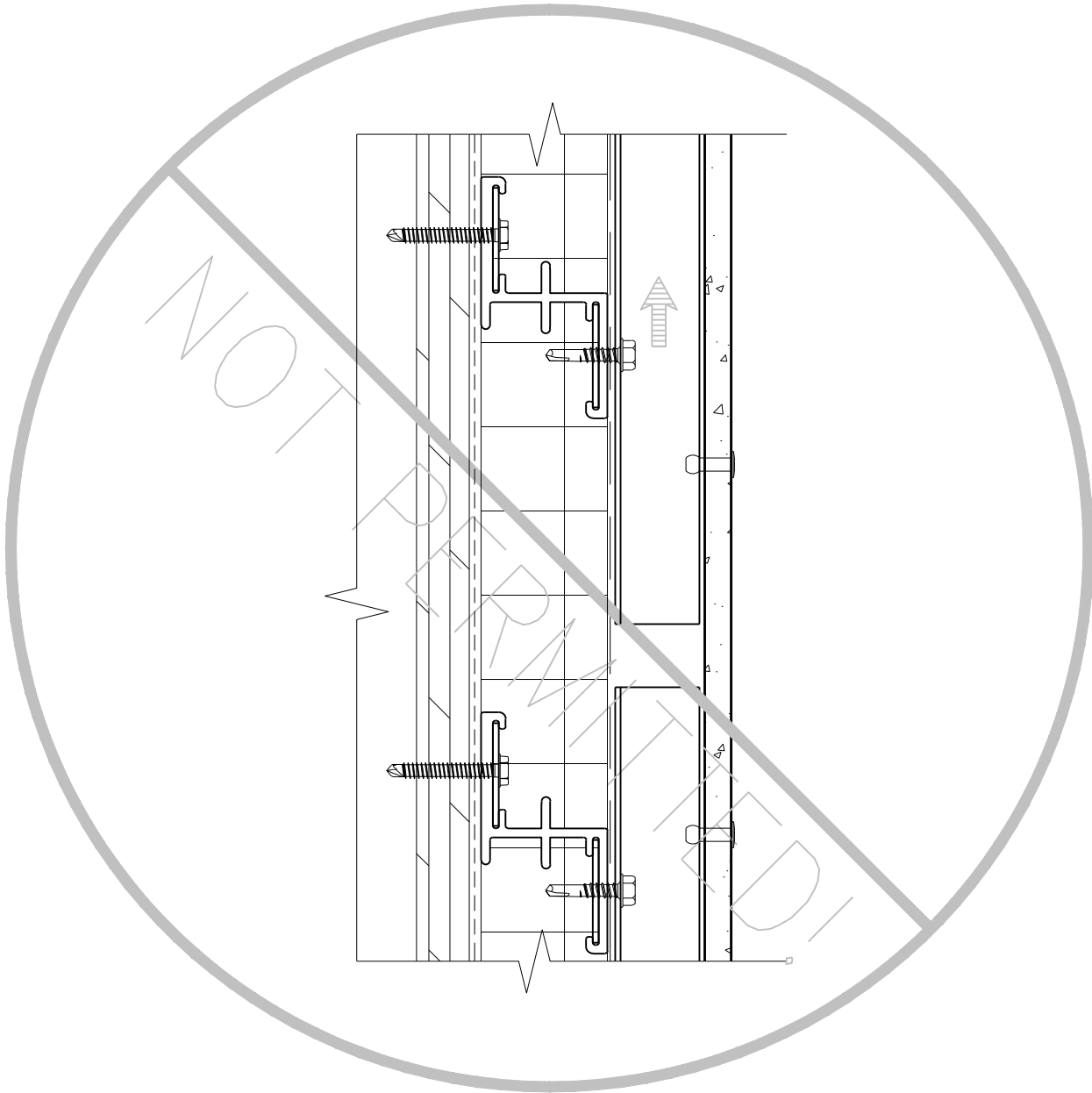
American Fiber Cement Corporation (303) 972-5107
www.americanfibercement.com

6901 S Pierce St #180, Littleton, CO 80128

Ref.: Horizontal Joint @ Break in Substrate

Date: 11/19/2021

Two-Layer Steel Attachment System with SMARTci Green Girt



SCALE: 6"=1'-0"

NOTES:

1. PANEL VERTICAL AND HORIZONTAL JOINT SPACING SHOULD BE 3/8" TYPICAL.



**American Fiber
Cement Corporation** (303) 972-5107
www.americanfibercement.com

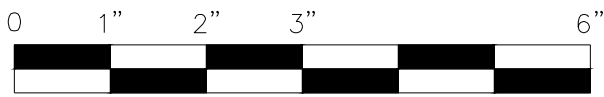
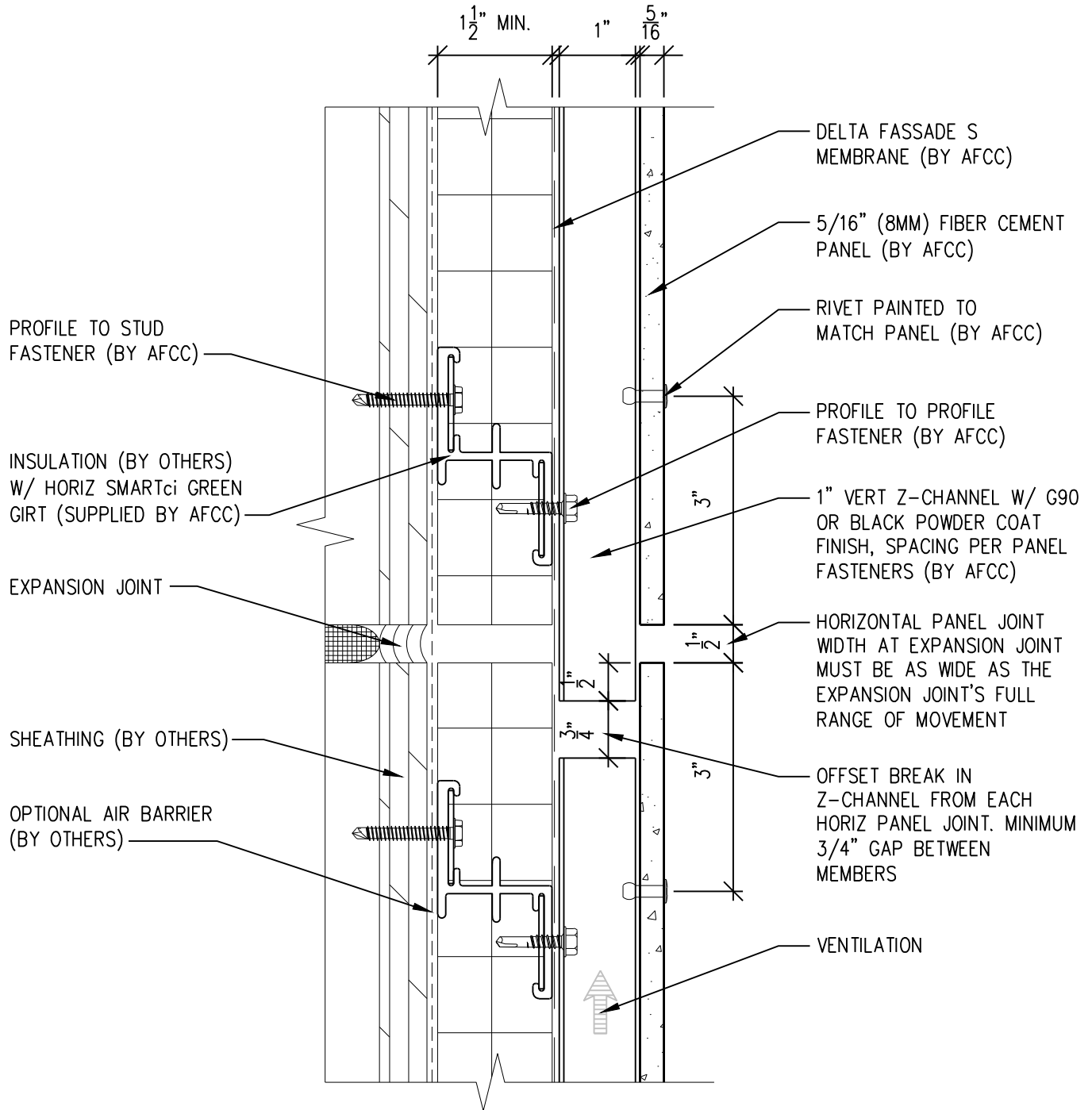
6901 S Pierce St #180, Littleton, CO 80128

Ref.:

**Not Permitted @
Break in Substrate**

Date: 11/19/2021

Two-Layer Steel Attachment System with SMARTci Green Girt



SCALE: 6" = 1'-0"

NOTES:

1. PANEL VERTICAL AND HORIZONTAL JOINT SPACING SHOULD BE 3/8" TYPICAL.



American Fiber Cement Corporation (303) 972-5107
www.americanfibercement.com

6901 S Pierce St #180, Littleton, CO 80128

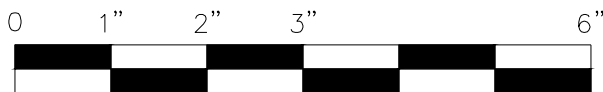
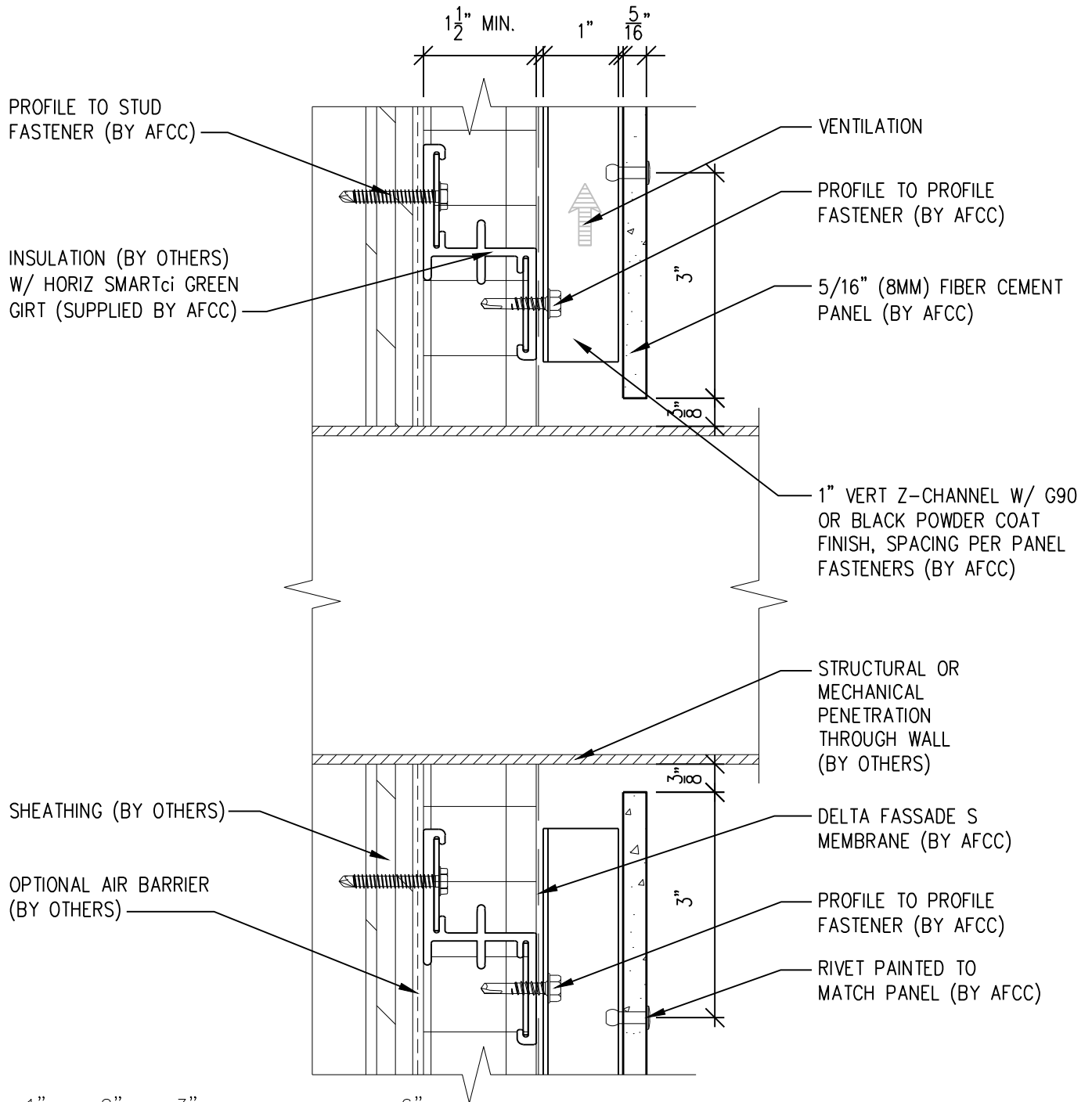
Ref.:

Horizontal Joint @
Expansion Joint

Date: 11/19/2021

Two-Layer Steel Attachment System

with SMARTci Green Girt



SCALE: 6" = 1'-0"

NOTES:

1. PANEL VERTICAL AND HORIZONTAL JOINT SPACING SHOULD BE 3/8" TYPICAL.



American Fiber Cement Corporation www.americanfibercement.com

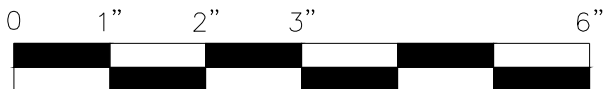
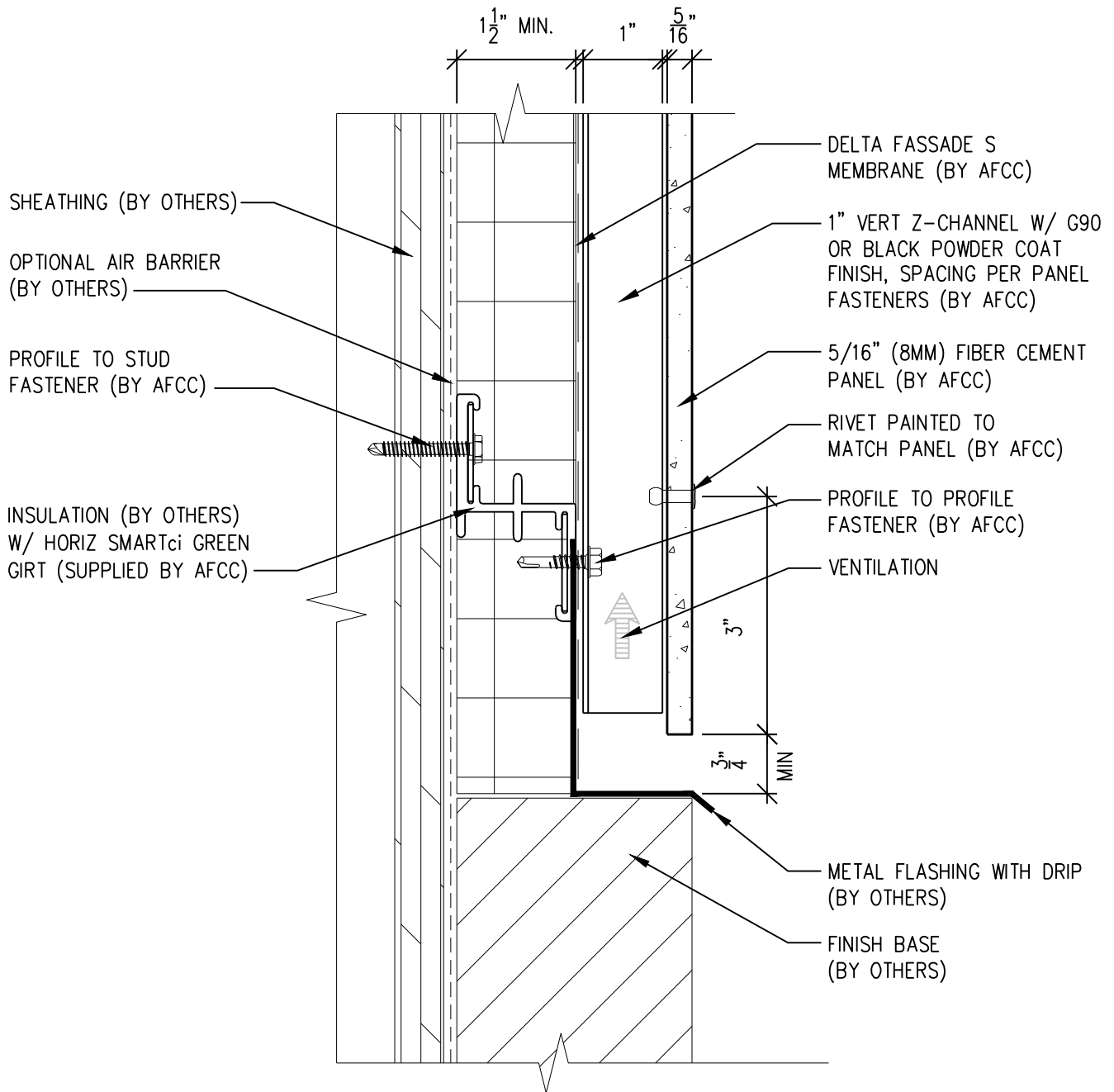
(303) 972-5107

6901 S Pierce St #180, Littleton, CO 80128

Ref.:
Horizontal Panel Break @
Penetration

Date: 11/19/2021

Two-Layer Steel Attachment System with SMARTci Green Girt



SCALE: 6"=1'-0"

NOTES:

1. PANEL VERTICAL AND HORIZONTAL JOINT SPACING SHOULD BE 3/8" TYPICAL.



**American Fiber
Cement Corporation**

(303) 972-5107

www.americanfibercement.com

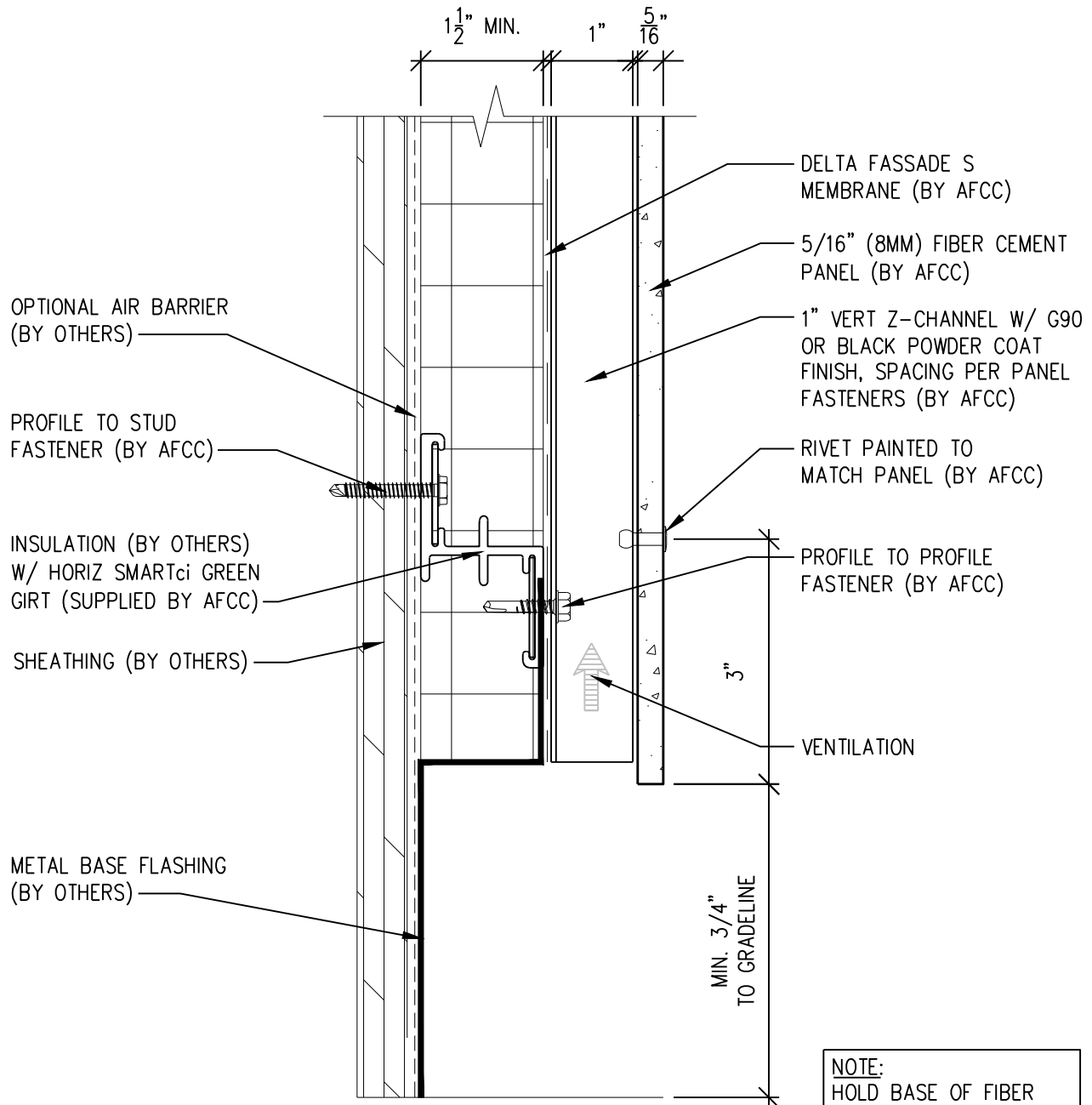
6901 S Pierce St #180, Littleton, CO 80128

Ref.:

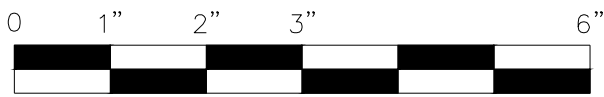
Bottom of Panel @
Wall Base

Date: 11/19/2021

Two-Layer Steel Attachment System with SMARTci Green Girt



NOTE:
HOLD BASE OF FIBER CEMENT PANEL 6"–12" OFF GRADE BASED ON EXPECTED SNOW BUILDUP



SCALE: 6" = 1'-0"

NOTES:

1. PANEL VERTICAL AND HORIZONTAL JOINT SPACING SHOULD BE 3/8" TYPICAL.

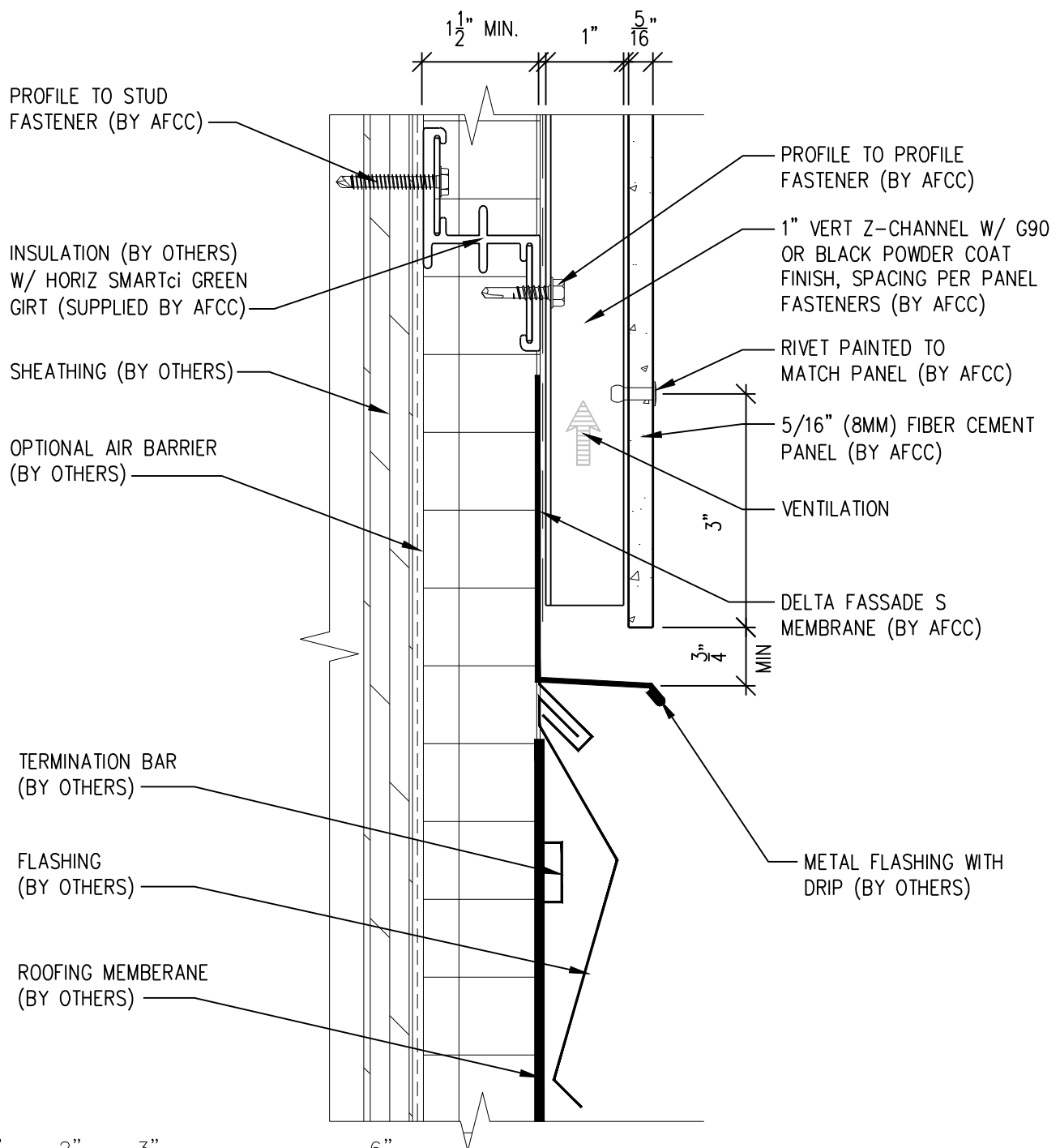


American Fiber Cement Corporation
www.americanfibercement.com
6901 S Pierce St #180, Littleton, CO 80128

Ref.:
**Bottom of Panel @
Open Termination**

Date: 11/19/2021

Two-Layer Steel Attachment System with SMARTci Green Girt



NOTES:
1. PANEL VERTICAL AND HORIZONTAL JOINT SPACING SHOULD BE 3/8" TYPICAL.

SCALE: 6" = 1'-0"



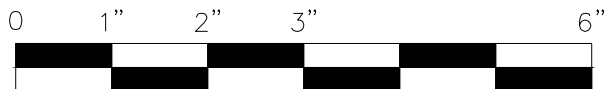
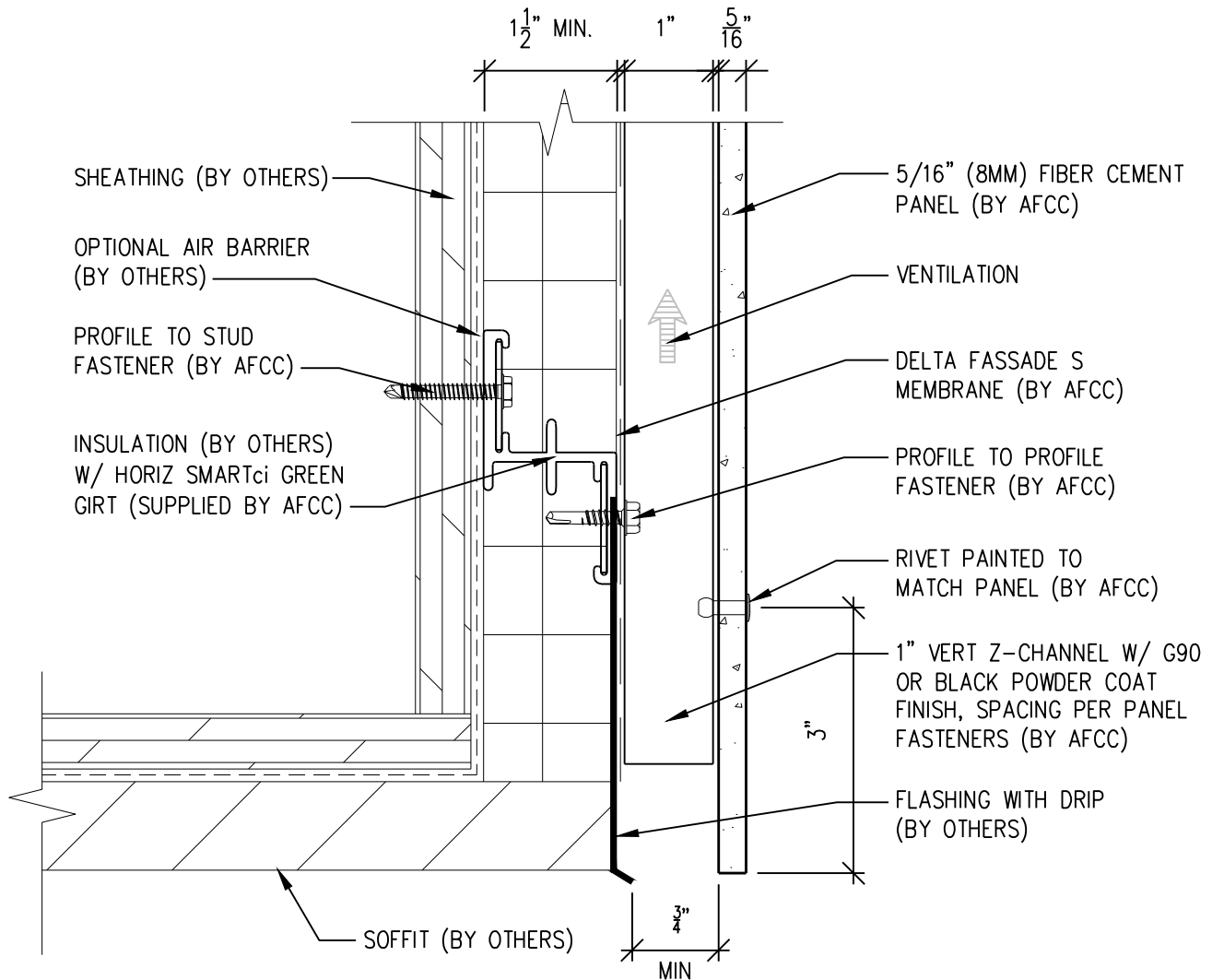
American Fiber Cement Corporation www.americanfibercement.com
(303) 972-5107

6901 S Pierce St #180, Littleton, CO 80128

Ref.:
**Bottom of Panel @
Low Roof Flashing**

Date: 11/19/2021

Two-Layer Steel Attachment System with SMARTci Green Girt



SCALE: 6"=1'-0"

NOTES:

1. PANEL VERTICAL AND HORIZONTAL JOINT SPACING SHOULD BE 3/8" TYPICAL.



**American Fiber
Cement Corporation**

(303) 972-5107

www.americanfibercement.com

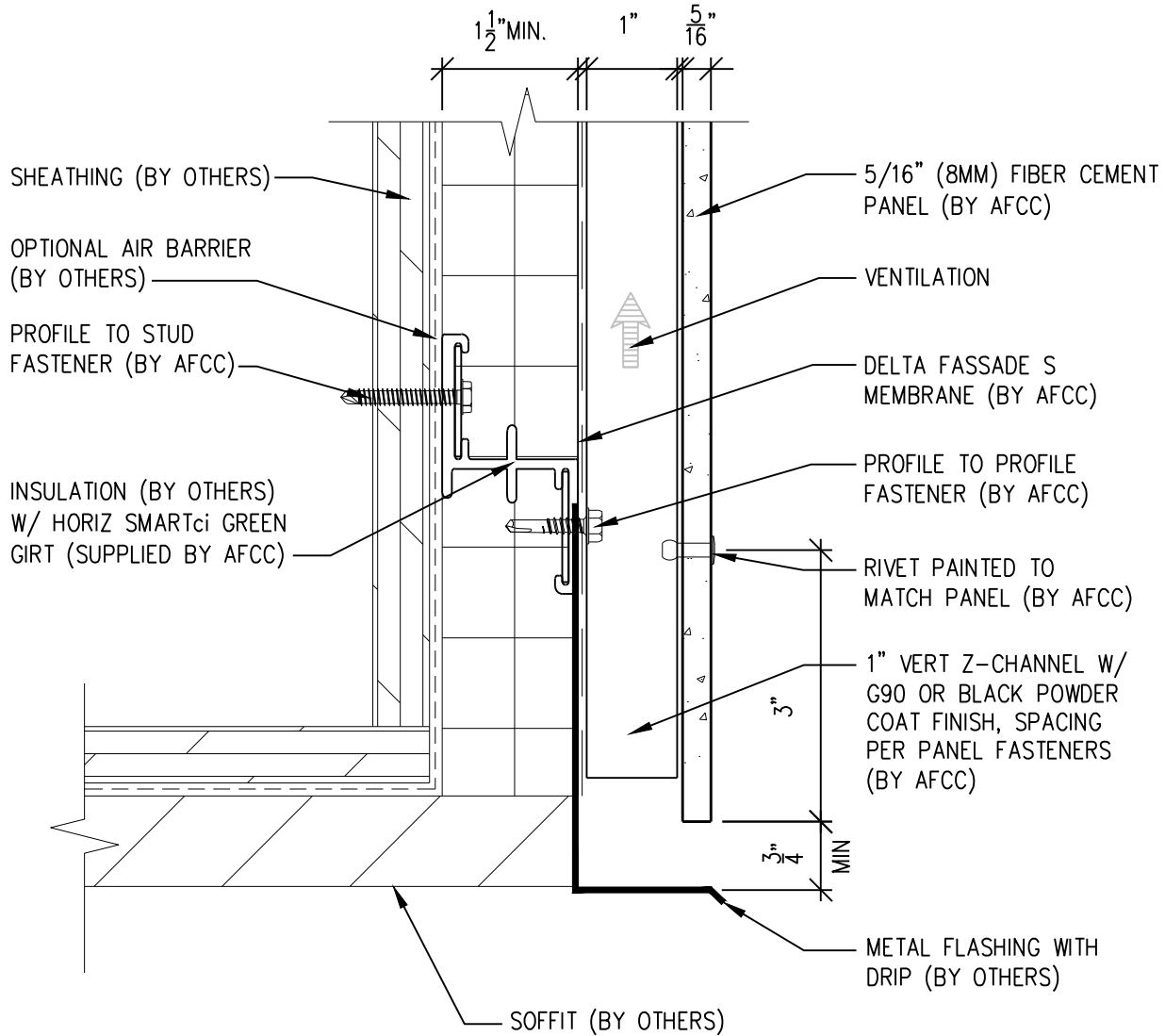
6901 S Pierce St #180, Littleton, CO 80128

Ref.:

Bottom of Panel @
Soffit

Date: 11/19/2021

Two-Layer Steel Attachment System with SMARTci Green Girt



SCALE: 6" = 1'-0"

NOTES:

1. PANEL VERTICAL AND HORIZONTAL JOINT SPACING SHOULD BE 3/8" TYPICAL.



American Fiber Cement Corporation www.americanfibercement.com

(303) 972-5107

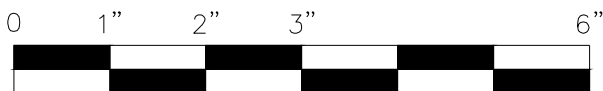
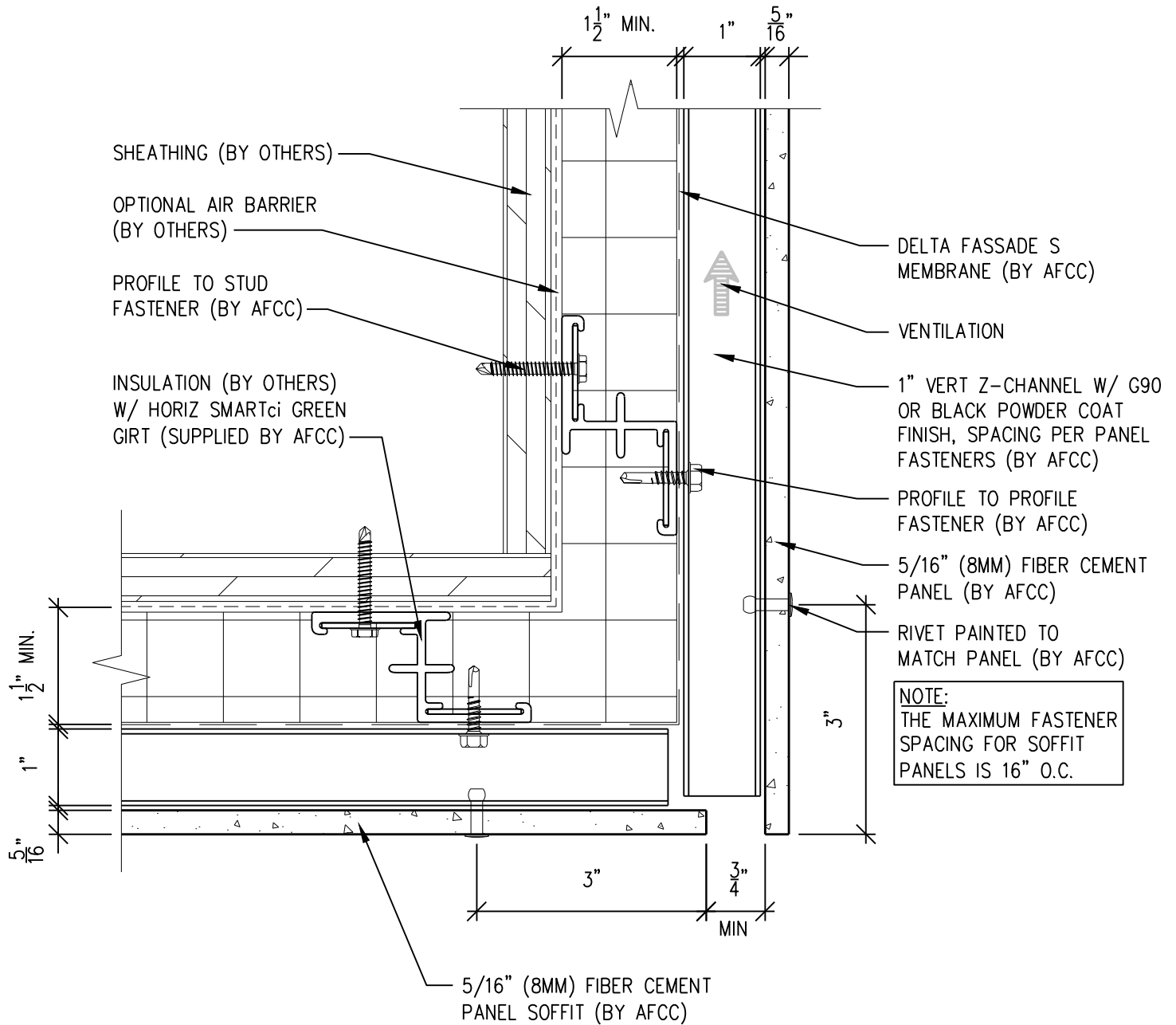
6901 S Pierce St #180, Littleton, CO 80128

Ref.:

Bottom of Panel @
Soffit (Alternate)

Date: 11/19/2021

Two-Layer Steel Attachment System with SMARTci Green Girt



SCALE: 6" = 1'-0"

NOTES:

1. PANEL VERTICAL AND HORIZONTAL JOINT SPACING SHOULD BE 3/8" TYPICAL.



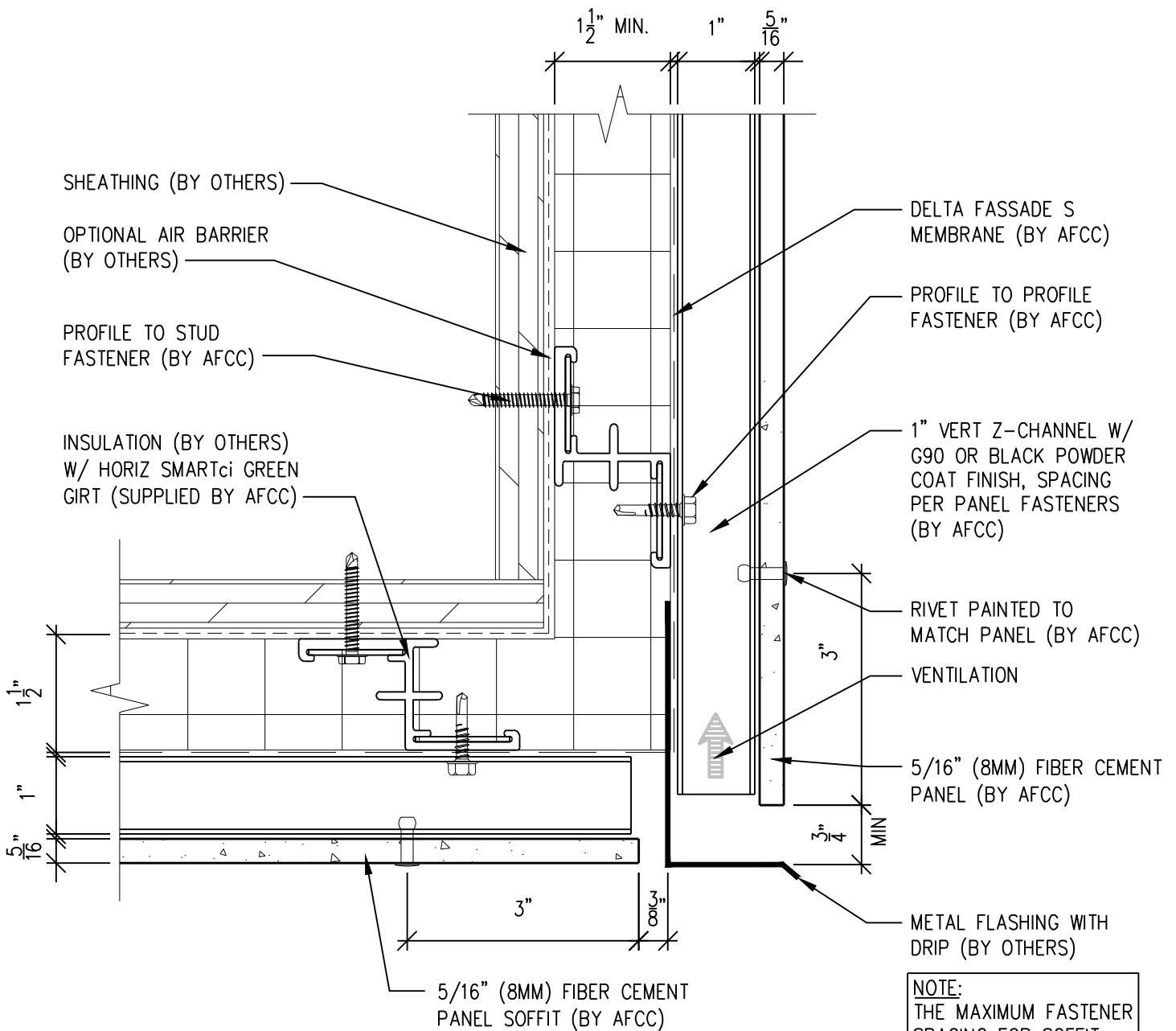
American Fiber Cement Corporation (303) 972-5107
www.americanfibercement.com

6901 S Pierce St #180, Littleton, CO 80128

Ref.:
Bottom of Panel @
F.C.P. Soffit

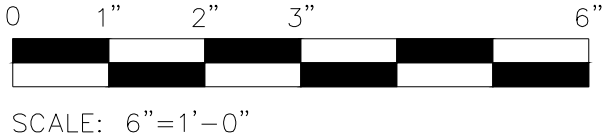
Date: 11/19/2021

Two-Layer Steel Attachment System with SMARTci Green Girt



NOTE:
THE MAXIMUM FASTENER SPACING FOR SOFFIT PANELS IS 16" O.C.

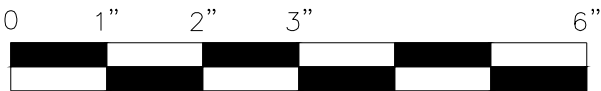
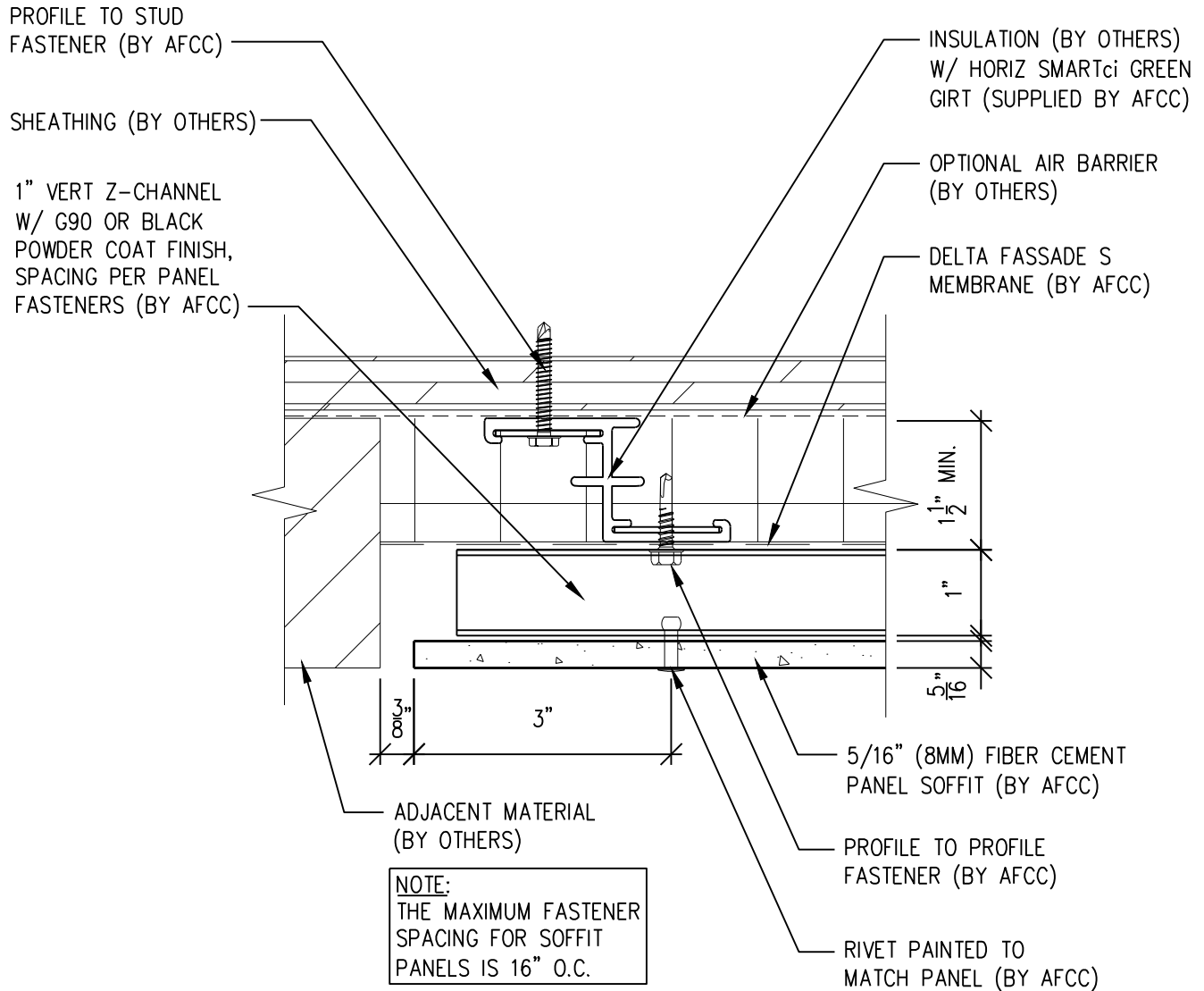
- NOTES:**
- PANEL VERTICAL AND HORIZONTAL JOINT SPACING SHOULD BE 3/8" TYPICAL.



American Fiber Cement Corporation (303) 972-5107
www.americanfibercement.com
6901 S Pierce St #180, Littleton, CO 80128

Ref.:
Bottom of Panel @
F.C.P. Soffit (Alternate)
Date: 11/19/2021

Two-Layer Steel Attachment System with SMARTci Green Girt



SCALE: 6"=1'-0"

NOTES:

1. PANEL VERTICAL AND HORIZONTAL JOINT SPACING SHOULD BE 3/8" TYPICAL.



**American Fiber
Cement Corporation**

(303) 972-5107

www.americanfibercement.com

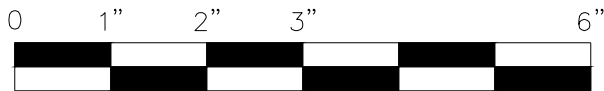
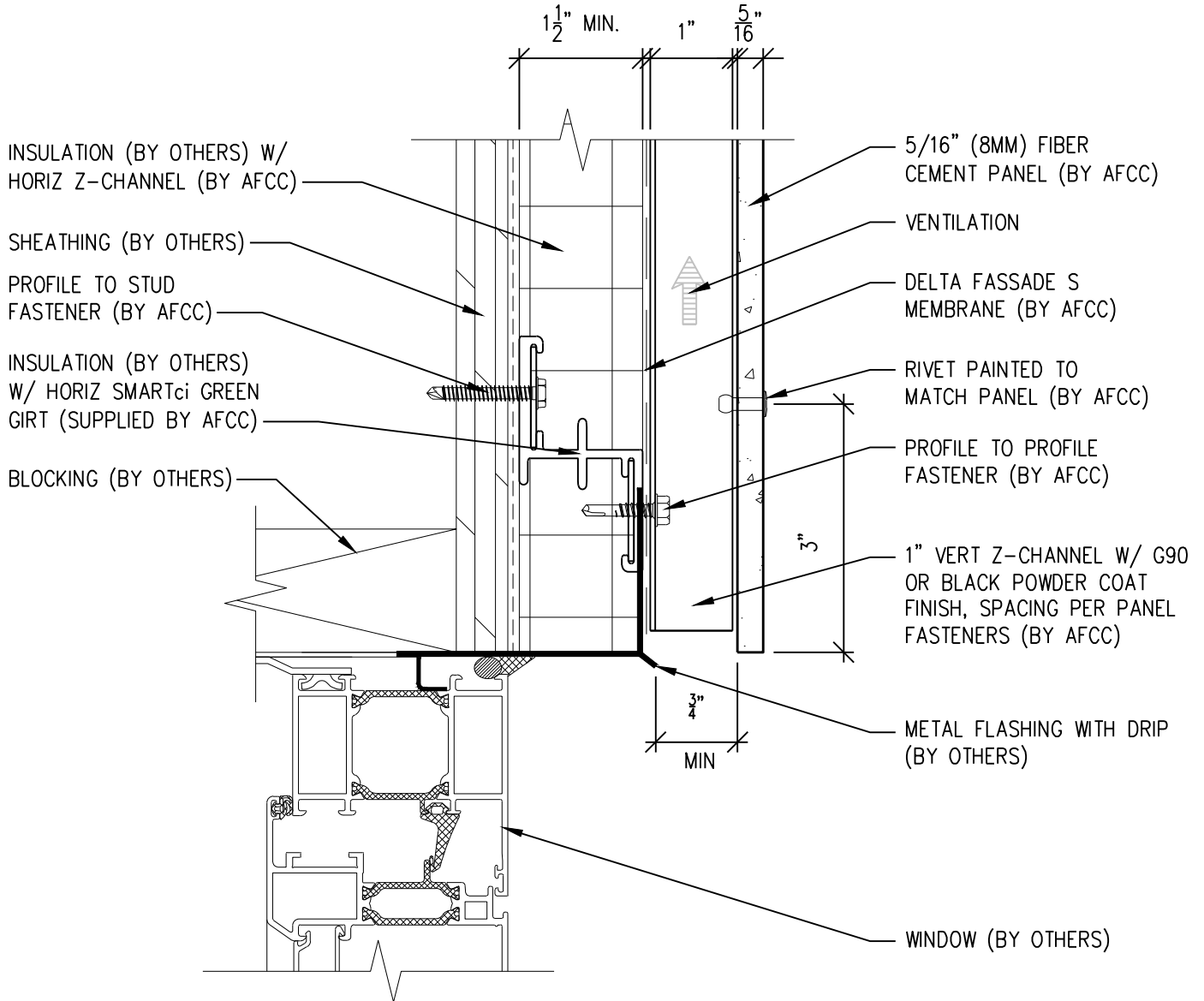
6901 S Pierce St #180, Littleton, CO 80128

Ref.:

**Soffit Termination @
Adjacent Material**

Date: 11/19/2021

Two-Layer Steel Attachment System with SMARTci Green Girt



SCALE: 6"=1'-0"

NOTES:

1. PANEL VERTICAL AND HORIZONTAL JOINT SPACING SHOULD BE 3/8" TYPICAL.



**American Fiber
Cement Corporation**

(303) 972-5107

www.americanfibercement.com

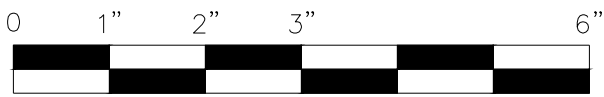
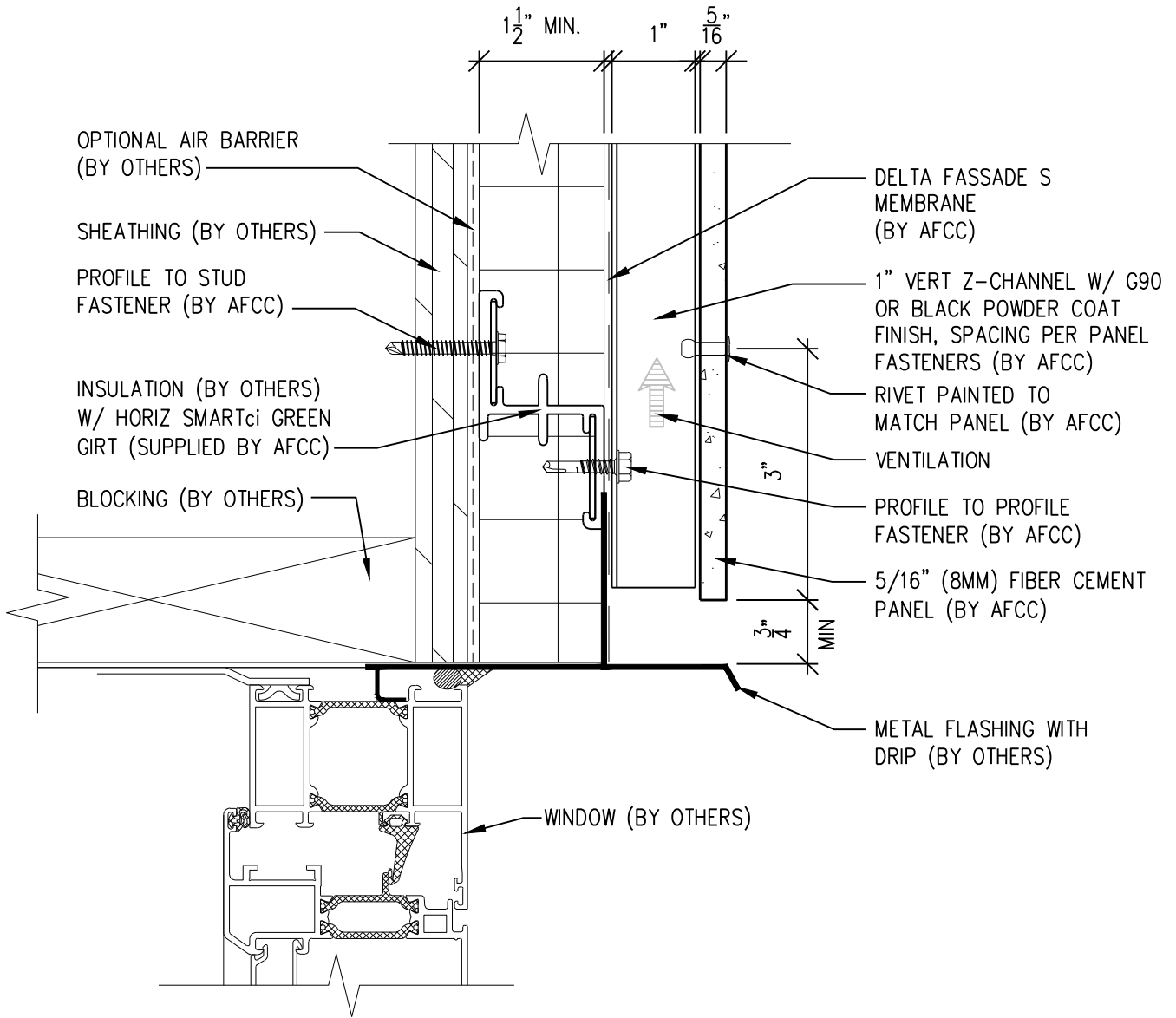
6901 S Pierce St #180, Littleton, CO 80128

Ref.:

Bottom of Panel @
Window Head

Date: 11/19/2021

Two-Layer Steel Attachment System with SMARTci Green Girt



SCALE: 6" = 1'-0"

NOTES:

1. PANEL VERTICAL AND HORIZONTAL JOINT SPACING SHOULD BE 3/8" TYPICAL.



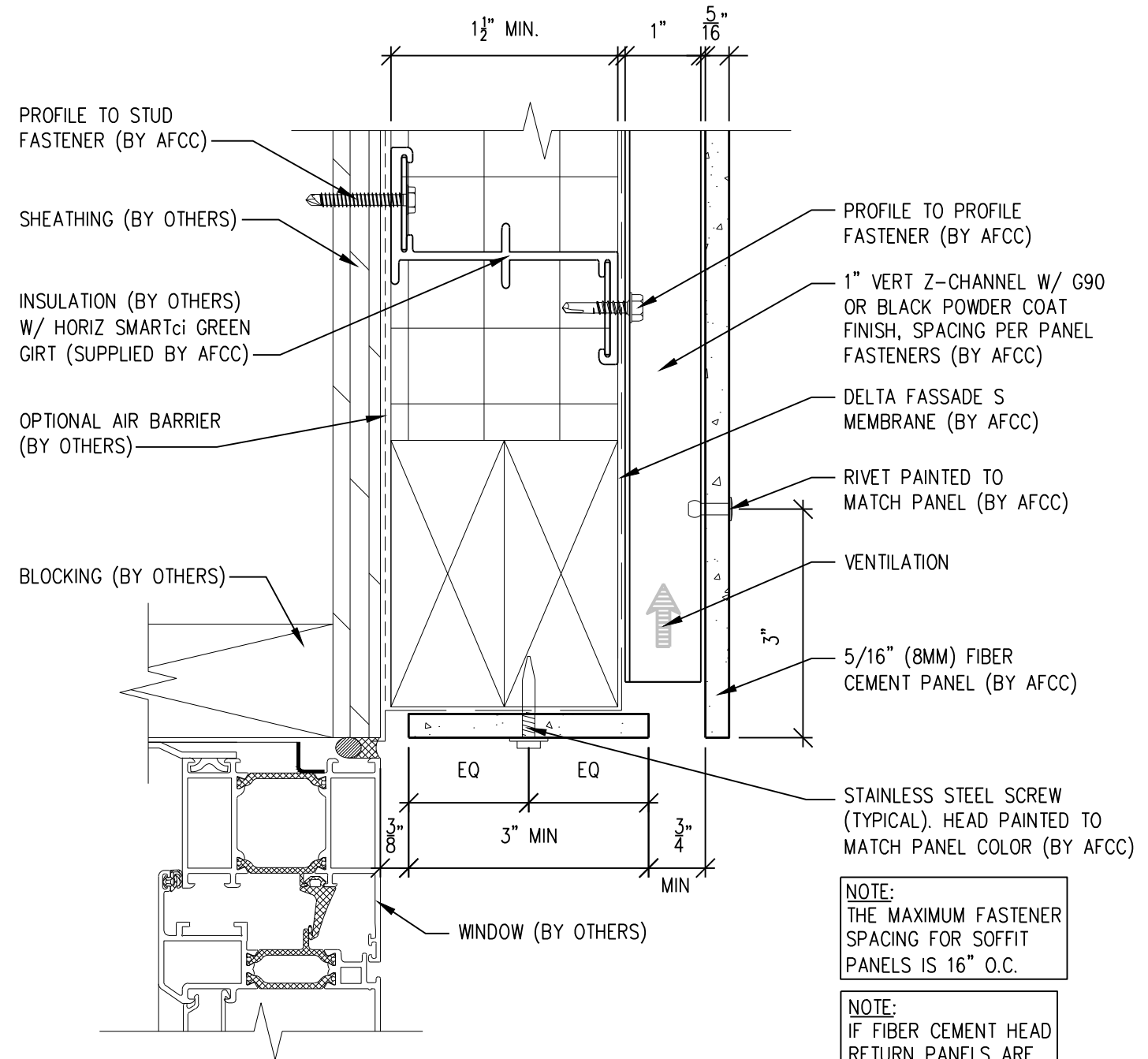
American Fiber Cement Corporation
 (303) 972-5107
www.americanfibercement.com

6901 S Pierce St #180, Littleton, CO 80128

Ref.:
 Bottom of Panel @
 Window Head (Alternate)

Date: 11/19/2021

Two-Layer Steel Attachment System with SMARTci Green Girt

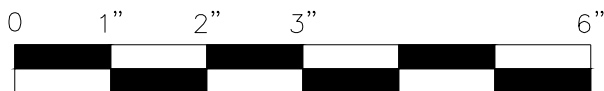


NOTE:
THE MAXIMUM FASTENER SPACING FOR SOFFIT PANELS IS 16" O.C.

NOTE:
IF FIBER CEMENT HEAD RETURN PANELS ARE LESS THAN 3" WIDE, ADHESIVE ATTACHMENT WILL BE REQUIRED.

NOTES:

1. PANEL VERTICAL AND HORIZONTAL JOINT SPACING SHOULD BE 3/8" TYPICAL.



SCALE: 6"=1'-0"



**American Fiber
Cement Corporation**

(303) 972-5107

www.americanfibercement.com

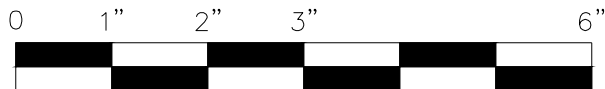
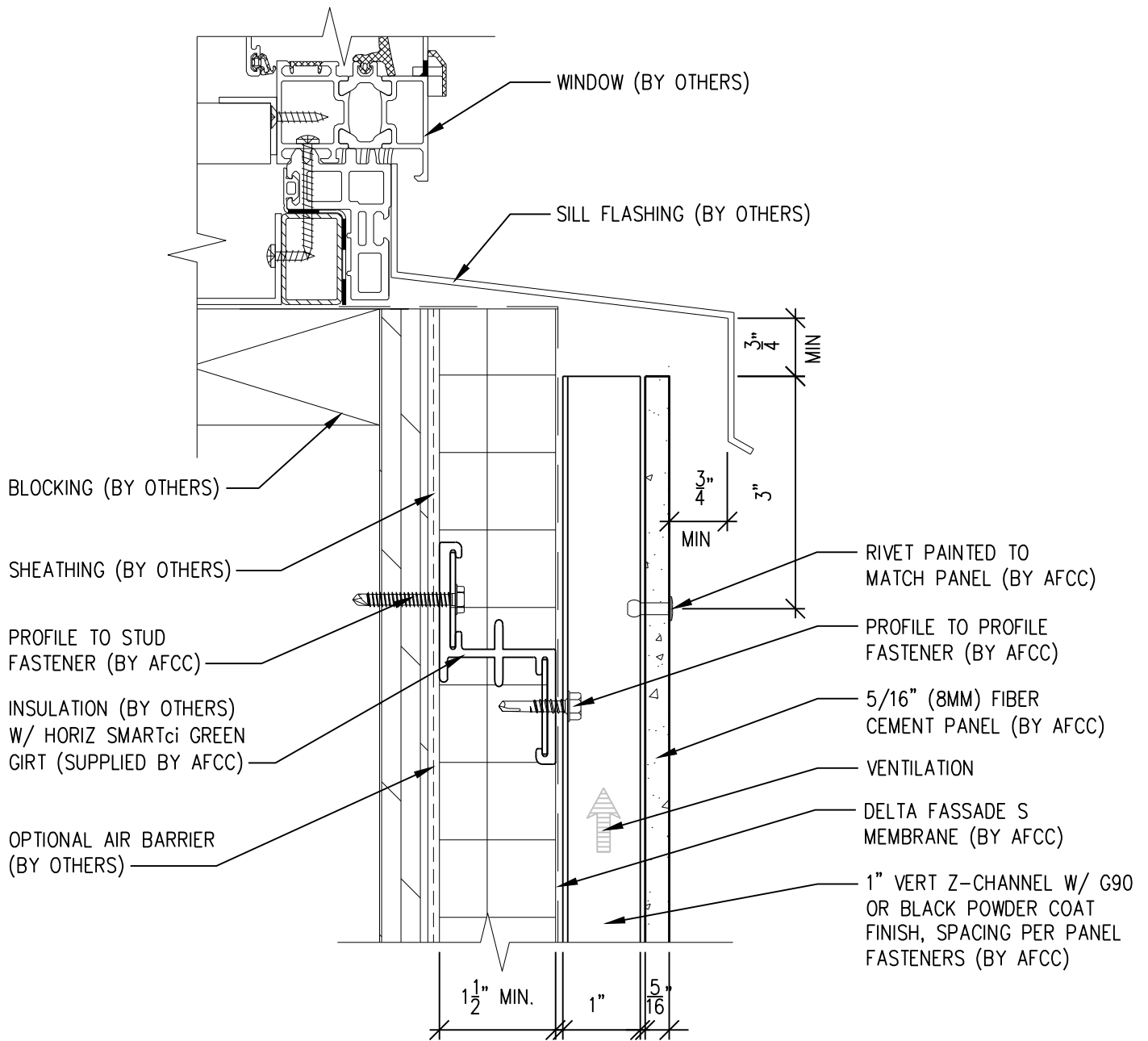
6901 S Pierce St #180, Littleton, CO 80128

Ref.:

F.C.P. Return @
Window Head

Date: 11/19/2021

Two-Layer Steel Attachment System with SMARTci Green Girt



SCALE: 6"=1'-0"

NOTES:

1. PANEL VERTICAL AND HORIZONTAL JOINT SPACING SHOULD BE 3/8" TYPICAL.



**American Fiber
Cement Corporation**

(303) 972-5107

www.americanfibercement.com

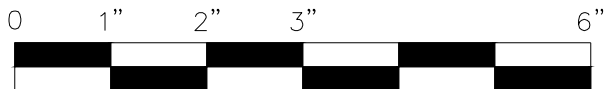
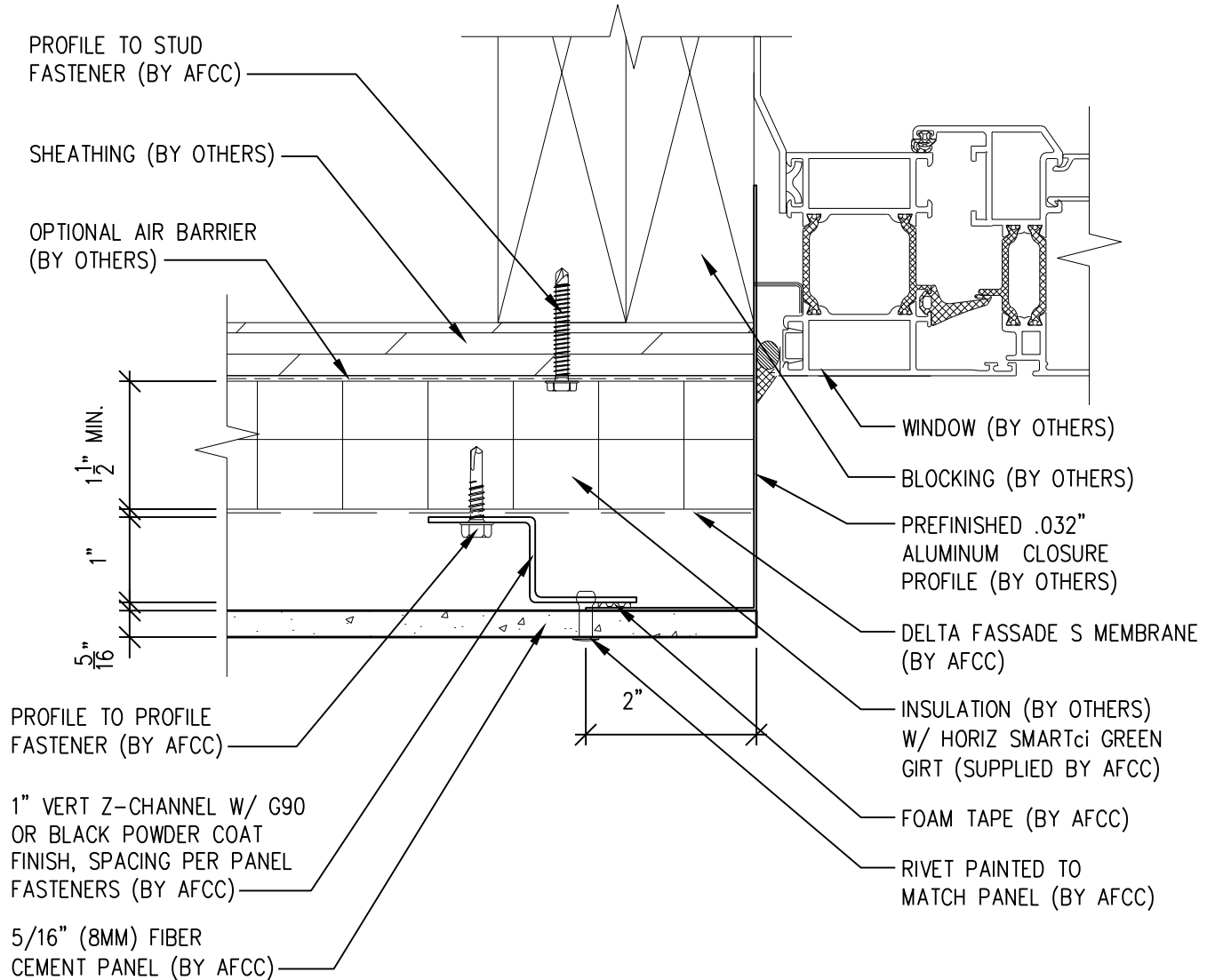
6901 S Pierce St #180, Littleton, CO 80128

Ref.:

Top of Panel @
Window Sill

Date: 11/19/2021

Two-Layer Steel Attachment System with SMARTci Green Girt



SCALE: 6"=1'-0"

NOTES:

1. PANEL VERTICAL AND HORIZONTAL JOINT SPACING SHOULD BE 3/8" TYPICAL.



American Fiber Cement Corporation (303) 972-5107
www.americanfibercement.com

6901 S Pierce St #180, Littleton, CO 80128

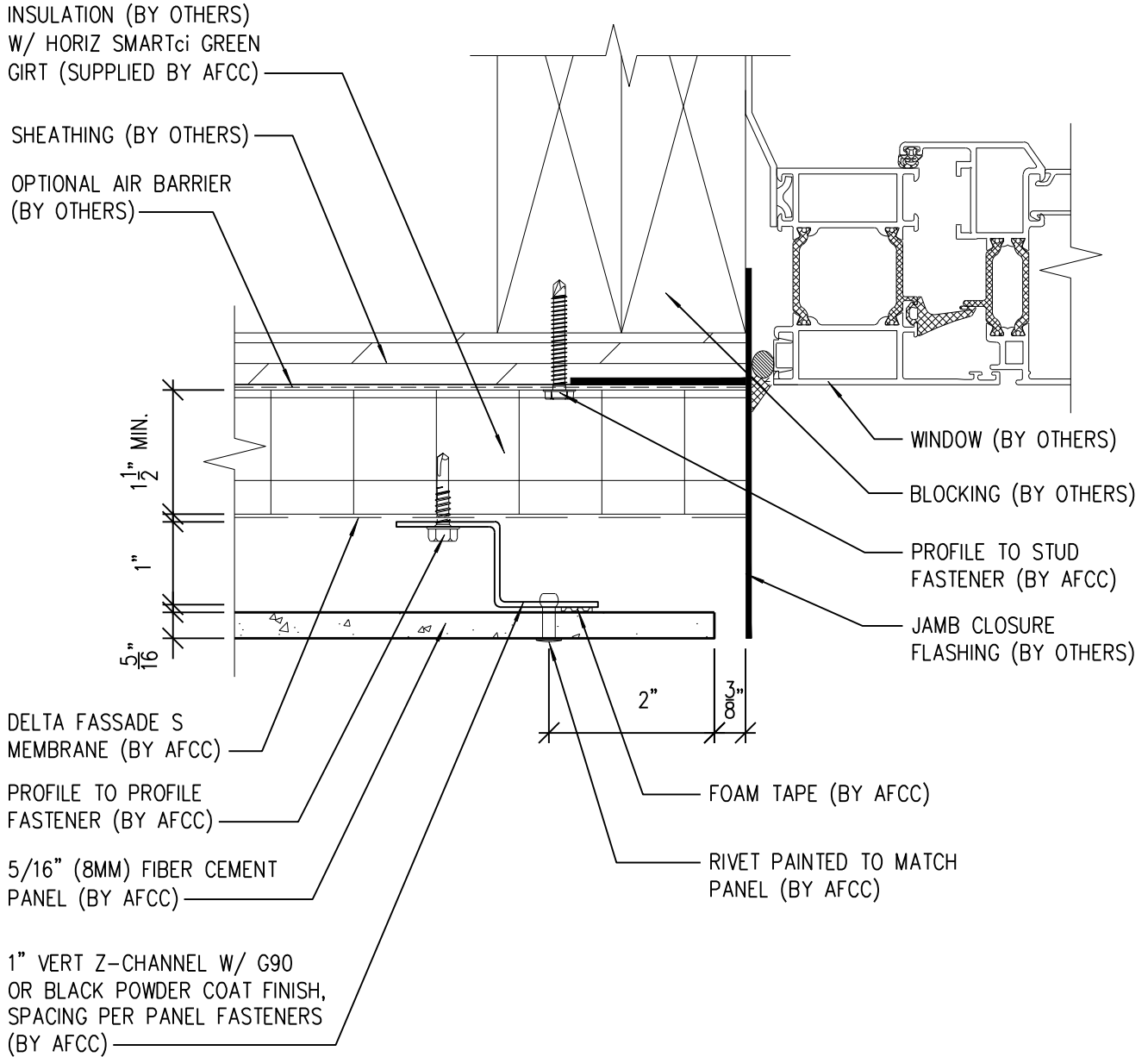
Ref.:

Panel Edge @
Window Jamb

Date: 11/19/2021

Two-Layer Steel Attachment System

with SMARTci Green Girt



SCALE: 6"=1'-0"

NOTES:

1. PANEL VERTICAL AND HORIZONTAL JOINT SPACING SHOULD BE 3/8" TYPICAL.



**American Fiber
Cement Corporation**

(303) 972-5107

www.americanfibercement.com

Ref.:

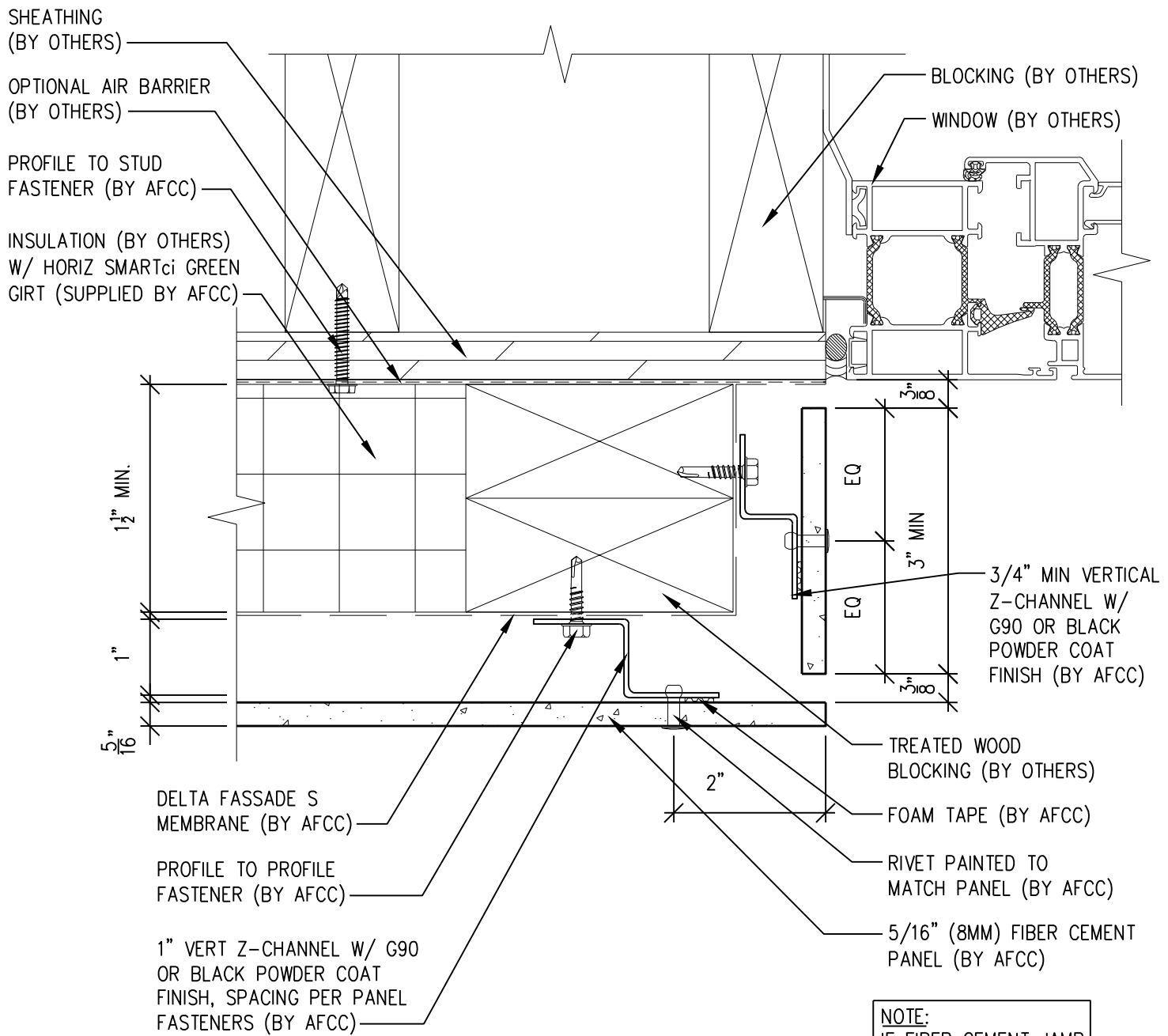
**Panel Edge @
Window Jamb (Alternate)**

Date: 11/19/2021

6901 S Pierce St #180, Littleton, CO 80128

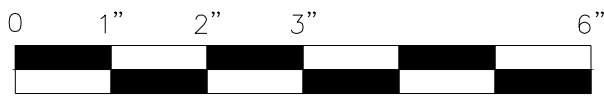
Two-Layer Steel Attachment System

with SMARTci Green Girt



1 1/2" MIN.
1"
5/16"

NOTE:
IF FIBER CEMENT JAMB
RETURN PANELS ARE
LESS THAN 3" WIDE,
ADHESIVE ATTACHMENT
WILL BE REQUIRED.



SCALE: 6" = 1'-0"

NOTES:

1. PANEL VERTICAL AND HORIZONTAL JOINT SPACING SHOULD BE 3/8" TYPICAL.



American Fiber Cement Corporation www.americanfibercement.com

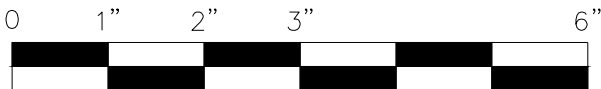
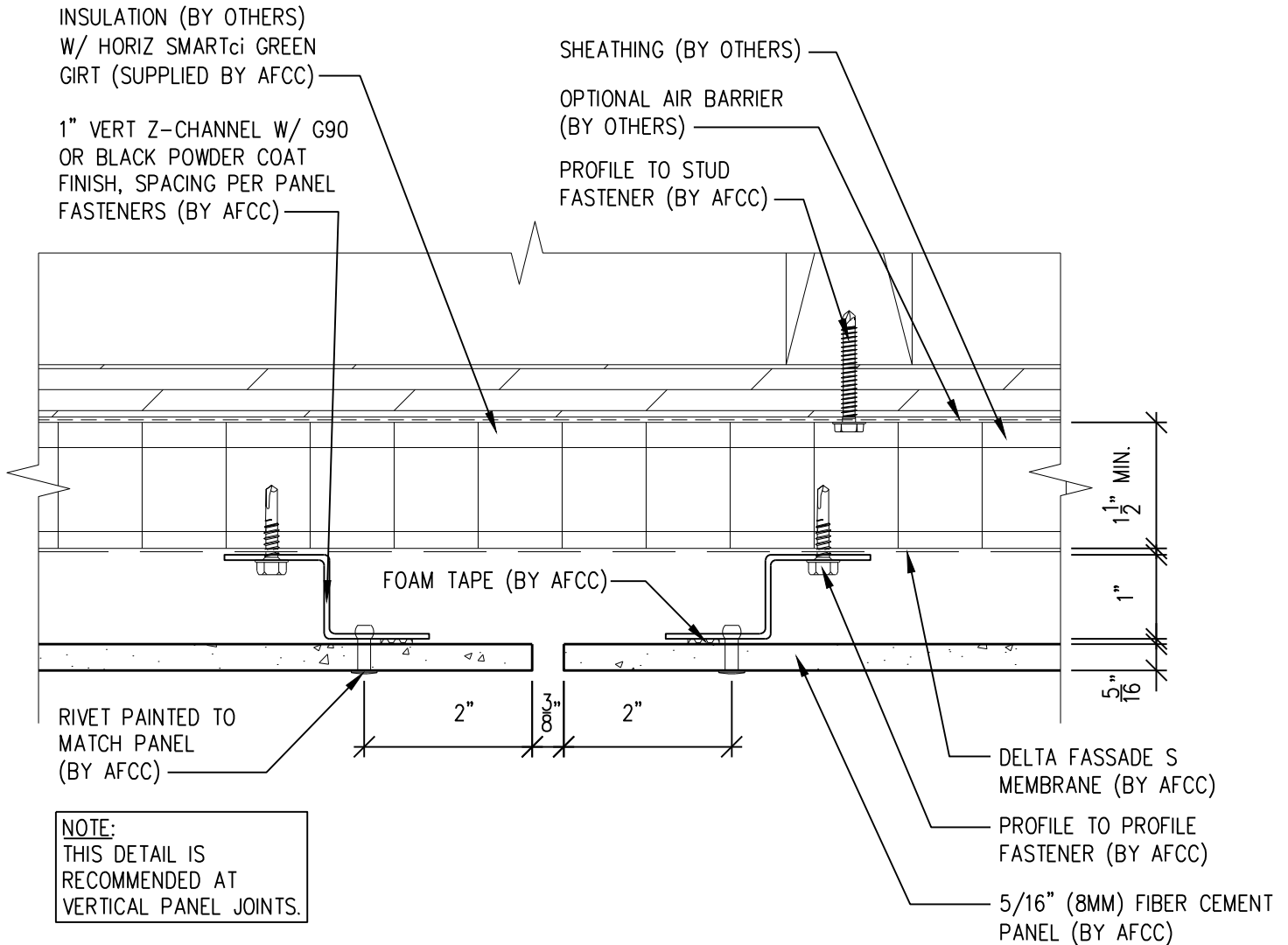
(303) 972-5107

6901 S Pierce St #180, Littleton, CO 80128

Ref.:
**F.C.P. Return @
Window Jamb**

Date: 11/19/2021

Two-Layer Steel Attachment System with SMARTci Green Girt



SCALE: 6"=1'-0"

NOTES:

1. PANEL VERTICAL AND HORIZONTAL JOINT SPACING SHOULD BE 3/8" TYPICAL.



**American Fiber
Cement Corporation** www.americanfibercement.com

(303) 972-5107

6901 S Pierce St #180, Littleton, CO 80128

Ref.:

Vertical Panel Joint
Option 1

Date: 11/19/2021

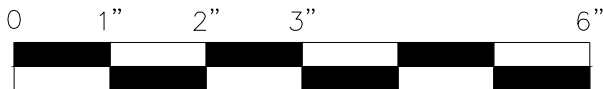
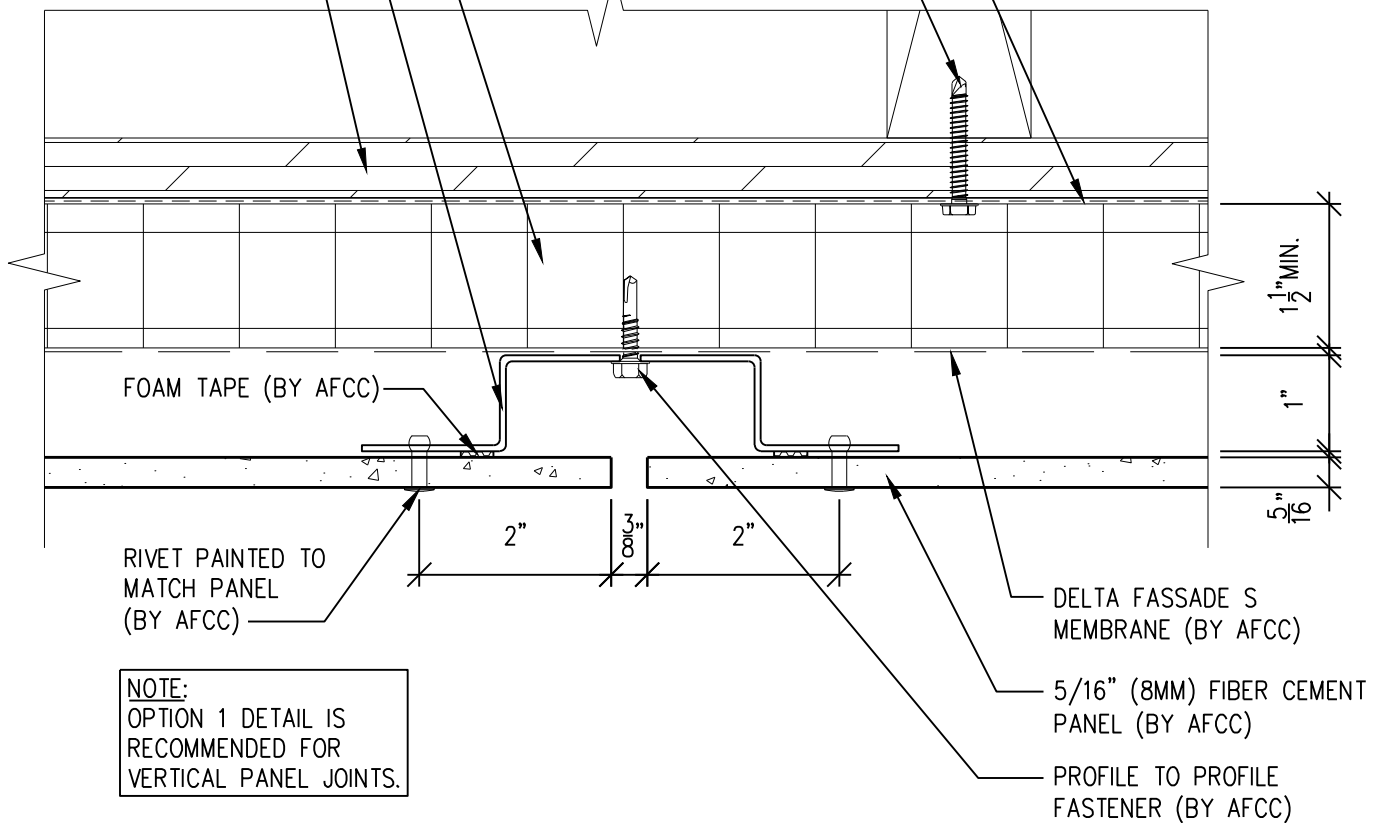
Two-Layer Steel Attachment System with SMARTci Green Girt

INSULATION (BY OTHERS)
W/ HORIZ SMARTci GREEN
GIRT (SUPPLIED BY AFCC)

1" VERT HAT-CHANNEL W/
G90 OR BLACK POWDER COAT
FINISH, SPACING PER PANEL
FASTENERS (BY OTHERS)

SHEATHING (BY OTHERS)

OPTIONAL AIR BARRIER
(BY OTHERS)
PROFILE TO STUD
FASTENER (BY AFCC)



SCALE: 6"=1'-0"

NOTES:

1. PANEL VERTICAL AND HORIZONTAL JOINT SPACING SHOULD BE 3/8" TYPICAL.



**American Fiber
Cement Corporation**

(303) 972-5107

www.americanfibercement.com

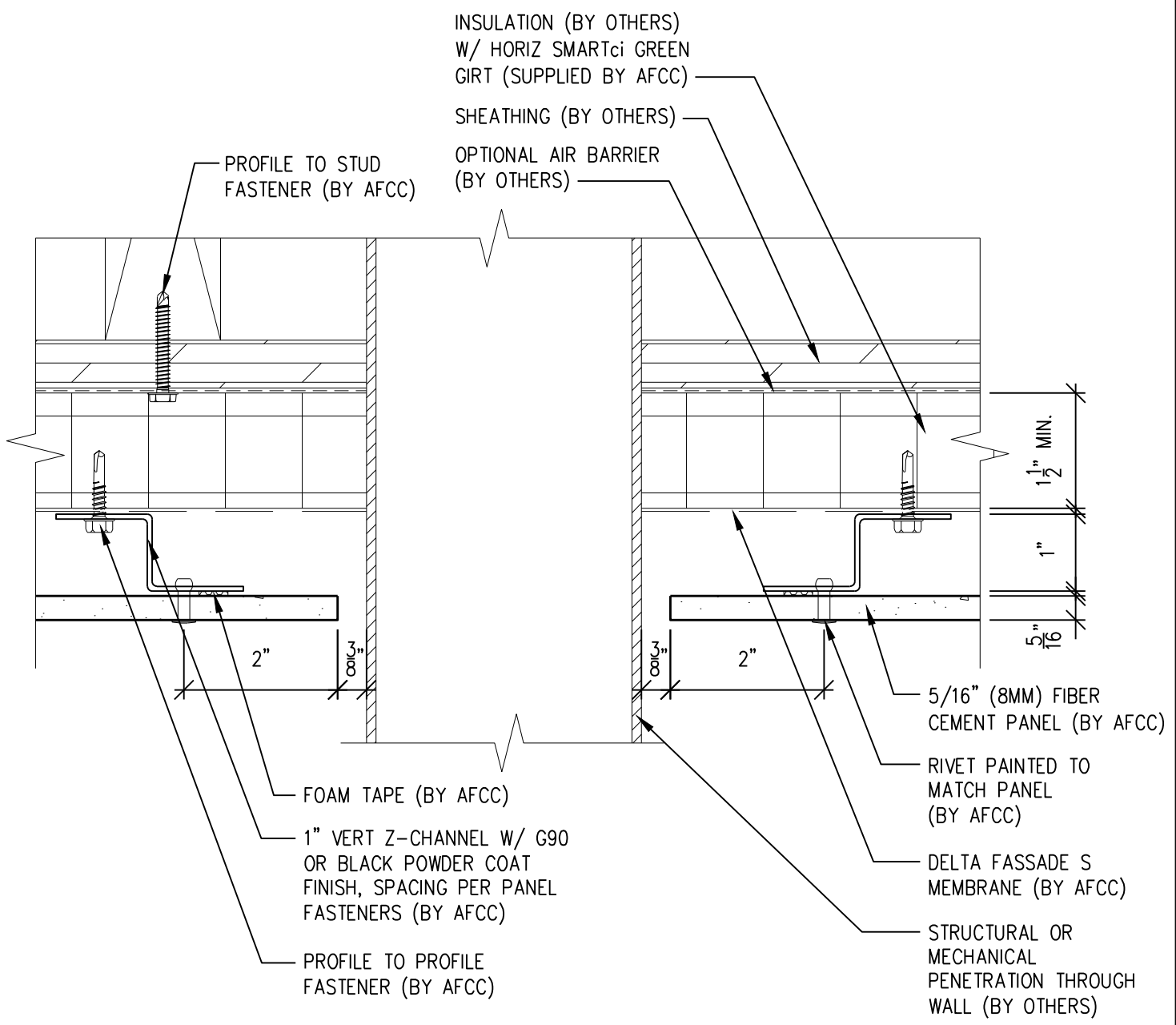
Ref.:

Vertical Panel Joint
Option 2

Date: 11/19/2021

6901 S Pierce St #180, Littleton, CO 80128

Two-Layer Steel Attachment System with SMARTci Green Girt



SCALE: 6" = 1'-0"

NOTES:

1. PANEL VERTICAL AND HORIZONTAL JOINT SPACING SHOULD BE 3/8" TYPICAL.



American Fiber Cement Corporation www.americanfibercement.com
(303) 972-5107

6901 S Pierce St #180, Littleton, CO 80128

Ref.:
Vertical Panel Break @ Penetration

Date: 11/19/2021

Two-Layer Steel Attachment System with SMARTci Green Girt

PROFILE TO STUD
FASTENER (BY AFCC)

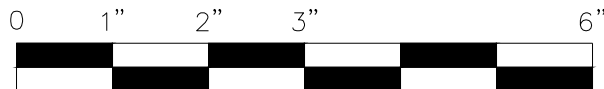
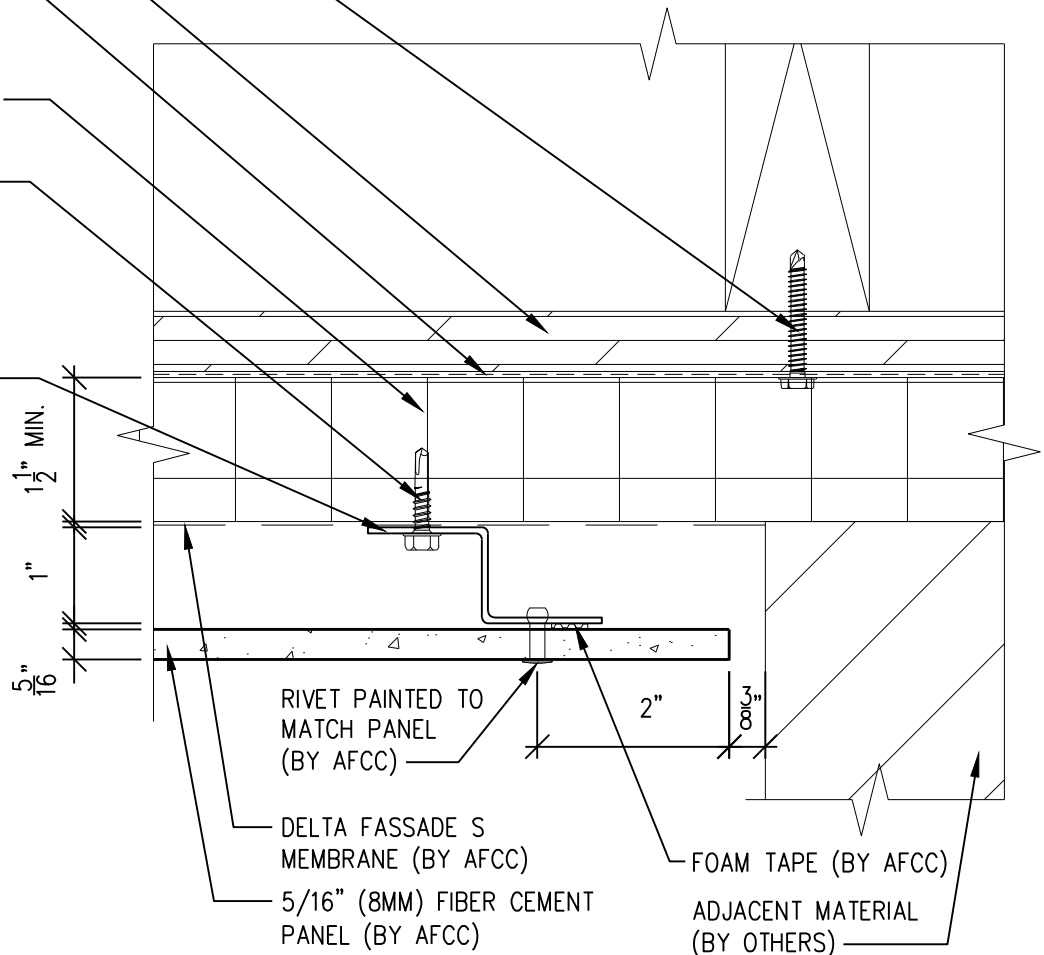
SHEATHING (BY OTHERS)

OPTIONAL AIR BARRIER
(BY OTHERS)

INSULATION (BY OTHERS)
W/ HORIZ SMARTci GREEN
GIRT (SUPPLIED BY AFCC)

PROFILE TO PROFILE
FASTENER (BY AFCC)

1" VERT Z-CHANNEL W/
G90 OR BLACK POWDER
COAT FINISH, SPACING
PER PANEL FASTENERS
(BY AFCC)



SCALE: 6"=1'-0"

NOTES:

1. PANEL VERTICAL AND HORIZONTAL JOINT SPACING SHOULD BE 3/8" TYPICAL.



**American Fiber
Cement Corporation**

(303) 972-5107

www.americanfibercement.com

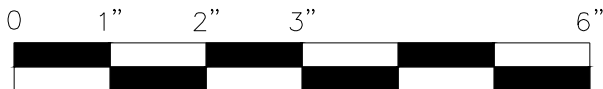
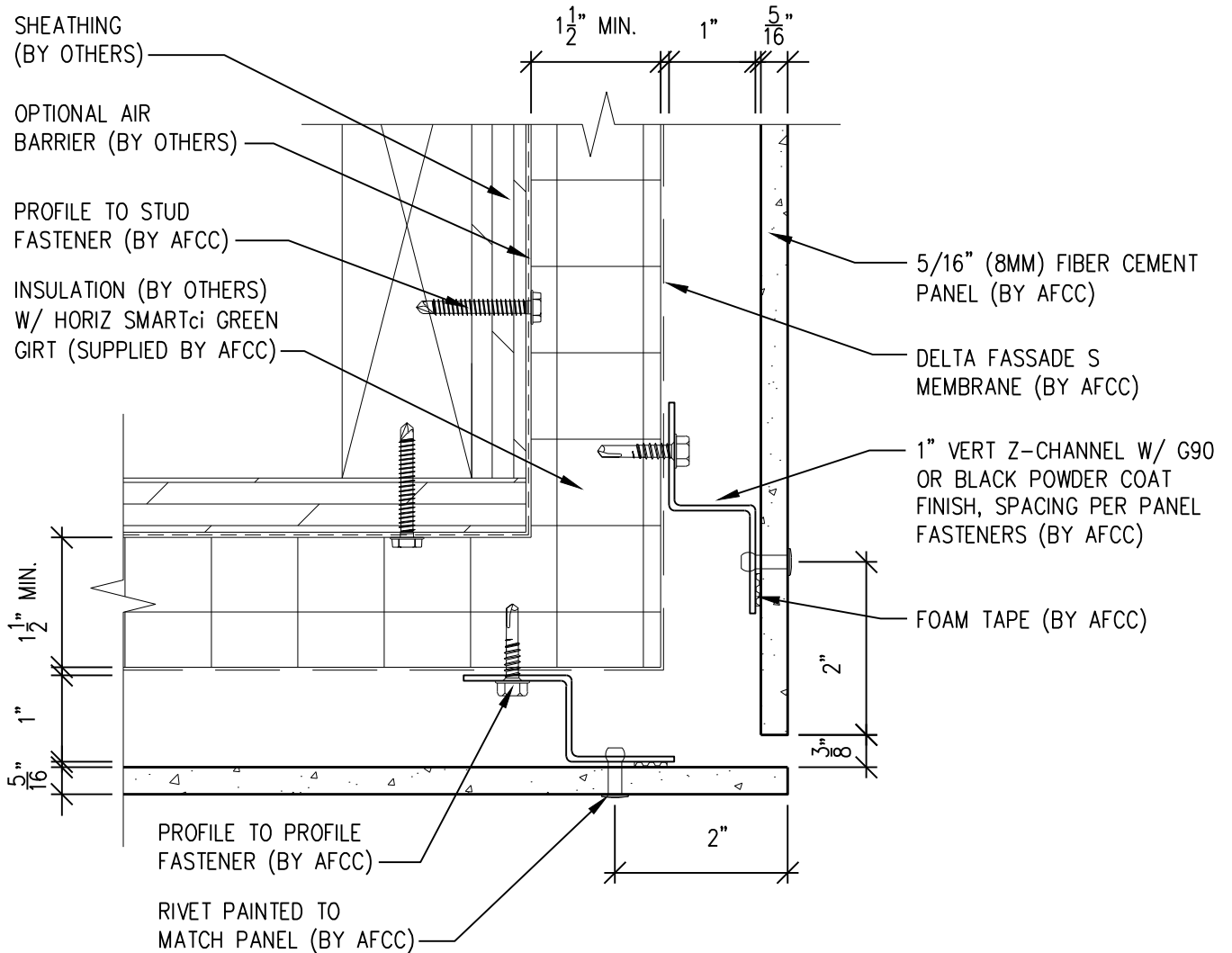
Ref.:

**Panel Edge @
Butt Joint**

Date: 11/19/2021

6901 S Pierce St #180, Littleton, CO 80128

Two-Layer Steel Attachment System with SMARTci Green Girt



SCALE: 6" = 1'-0"

NOTES:

1. PANEL VERTICAL AND HORIZONTAL JOINT SPACING SHOULD BE 3/8" TYPICAL.



**American Fiber
Cement Corporation**

(303) 972-5107

www.americanfibercement.com

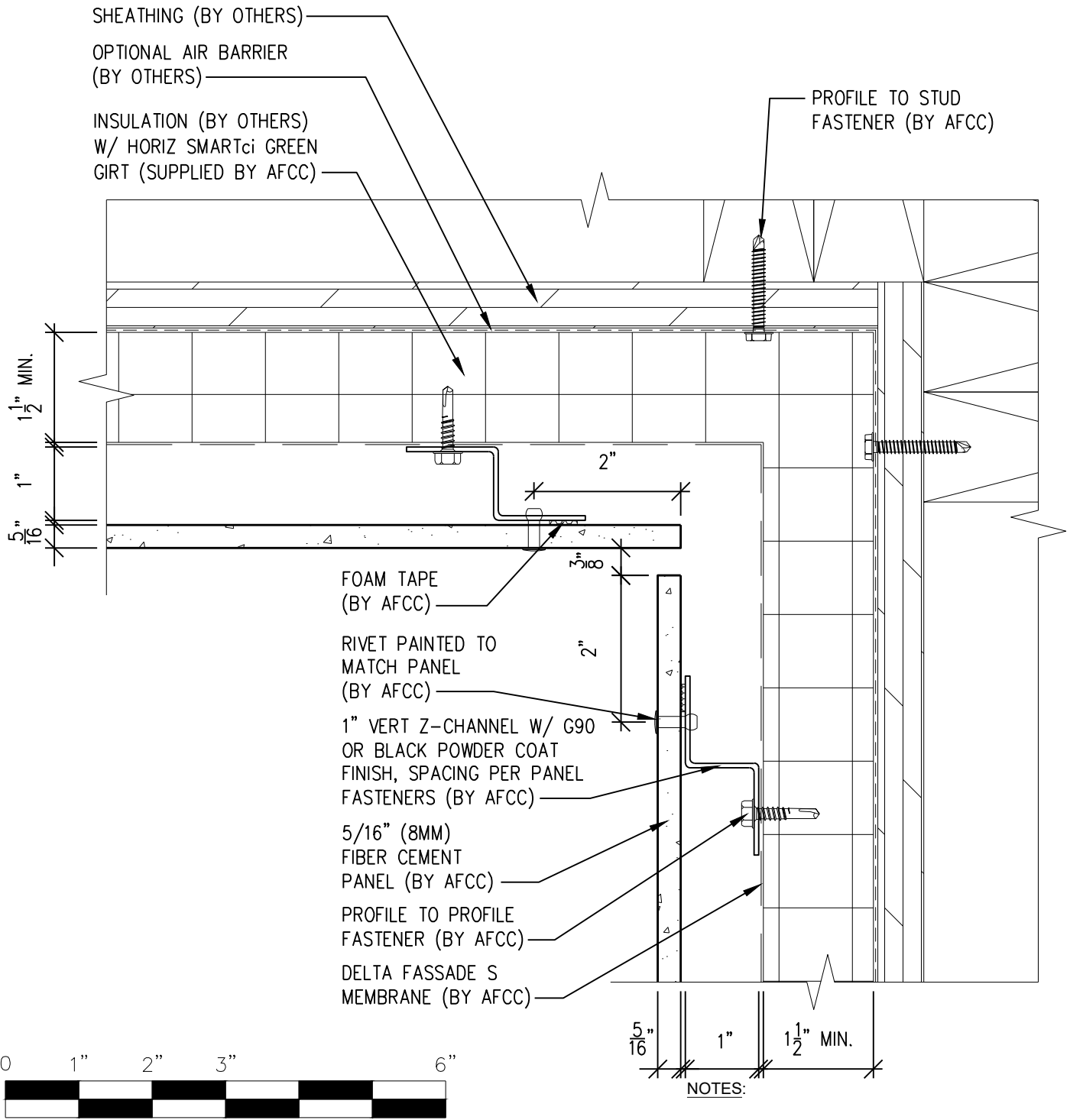
6901 S Pierce St #180, Littleton, CO 80128

Ref.:

**Panels @
Outside Corner**

Date: 11/19/2021

Two-Layer Steel Attachment System with SMARTci Green Girt



SCALE: 6"=1'-0"



**American Fiber
Cement Corporation**

(303) 972-5107

www.americanfibercement.com

6901 S Pierce St #180, Littleton, CO 80128

Ref.:

**Panels @
Inside Corner**

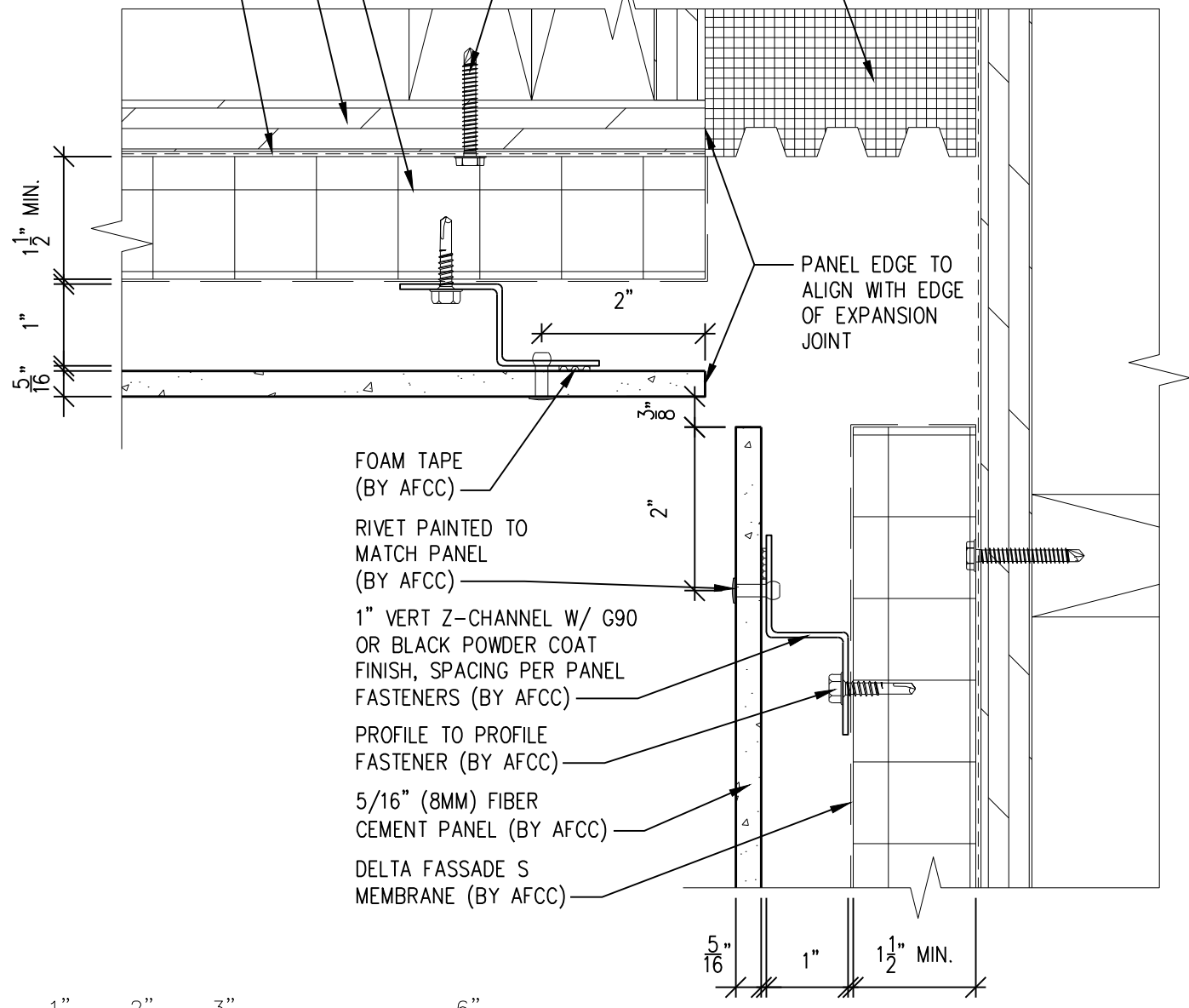
Date: 11/19/2021

Two-Layer Steel Attachment System

with SMARTci Green Girt

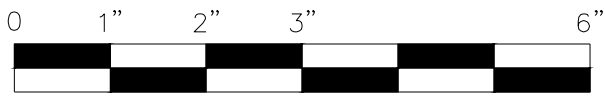
INSULATION (BY OTHERS)
 W/ HORIZ SMARTci GREEN
 GIRTS (SUPPLIED BY AFCC)
 SHEATHING (BY OTHERS)
 OPTIONAL AIR BARRIER
 (BY OTHERS)

EXPANSION JOINT
 COVER (BY OTHERS)
 PROFILE TO STUD
 FASTENER (BY AFCC)



FOAM TAPE (BY AFCC)
 RIVET PAINTED TO MATCH PANEL (BY AFCC)
 1" VERT Z-CHANNEL W/ G90 OR BLACK POWDER COAT FINISH, SPACING PER PANEL FASTENERS (BY AFCC)
 PROFILE TO PROFILE FASTENER (BY AFCC)
 5/16" (8MM) FIBER CEMENT PANEL (BY AFCC)
 DELTA FASSADE S MEMBRANE (BY AFCC)

PANEL EDGE TO ALIGN WITH EDGE OF EXPANSION JOINT



SCALE: 6"=1'-0"

NOTES:

1. PANEL VERTICAL AND HORIZONTAL JOINT SPACING SHOULD BE 3/8" TYPICAL.



American Fiber Cement Corporation www.americanfibercement.com

(303) 972-5107

6901 S Pierce St #180, Littleton, CO 80128

Ref.:

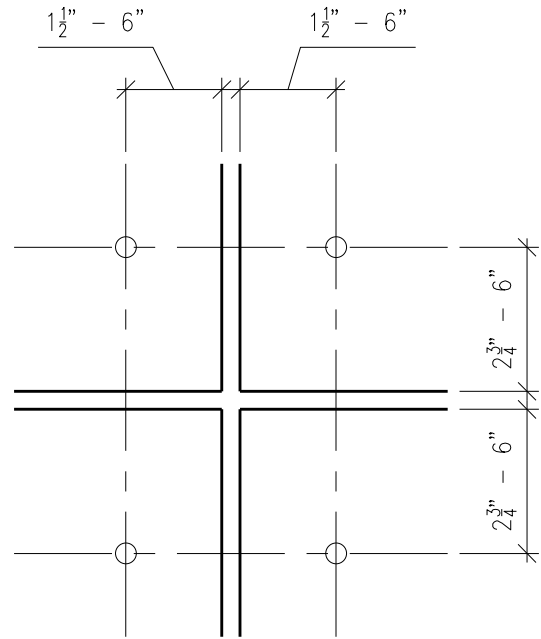
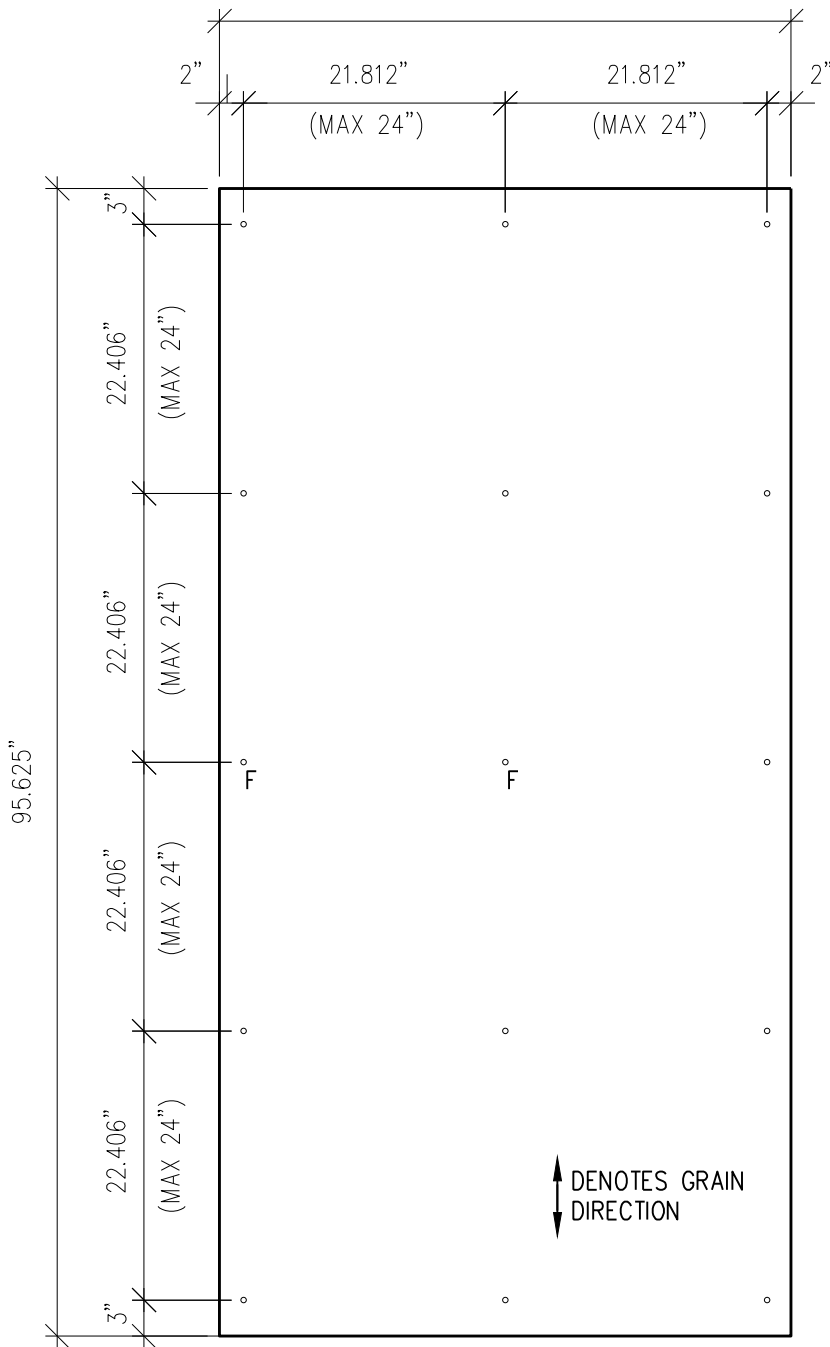
Expansion Joint @ Inside Corner

Date: 11/19/2021

Two-Layer Steel Attachment System

with SMARTci Green Girt

47.625"

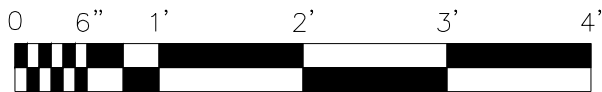


TYP PANEL EDGE FASTENER

3"=1'-0"

DRILLING KEY:

F = FIXED POINT 21/64"
 UNMARKED HOLE = GLIDING POINT 7/16"



SCALE: 3/4"=1'-0"

NOTES:

- PANEL VERTICAL AND HORIZONTAL JOINT SPACING SHOULD BE 3/8" TYPICAL.



American Fiber Cement Corporation (303) 972-5107
www.americanfibercement.com

6901 S Pierce St #180, Littleton, CO 80128

Ref.:

Typical
Fastener Layout

Date: 11/19/2021