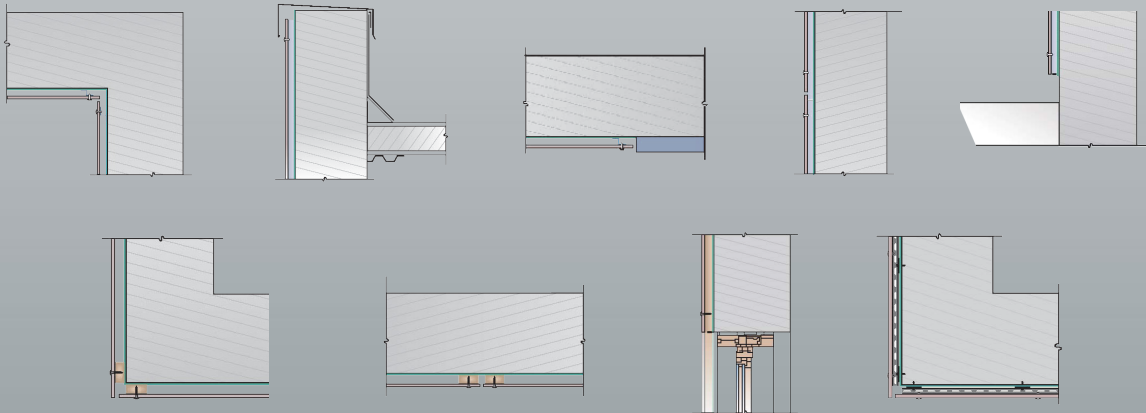


XKELEX X-Z19PF Aluminum Attachment System with Rivets





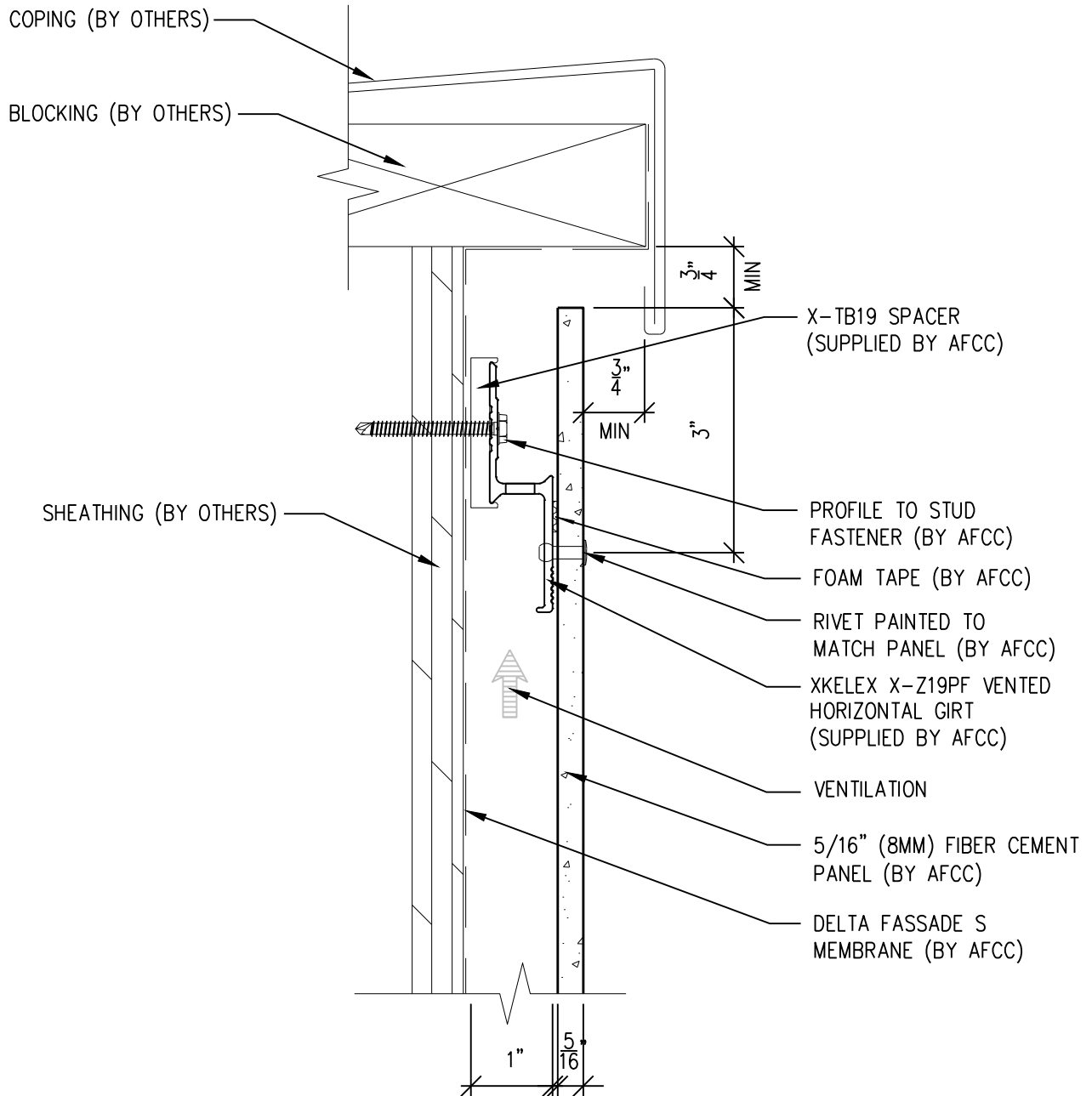
American Fiber Cement Corporation

XKELEX Details

- Page 3: Top Panel @ Coping
- Page 4: Top Panel @ Soffit
- Page 5: Top Panel @ F.C.P Soffit
- Page 6: Horizontal Panel Joint
- Page 7: Bottom of Panel @ Wall Base
- Page 8: Bottom of Panel @ Open Termination
- Page 9: Bottom of Panel @ Low Roof Flashing
- Page 10: Bottom of Panel @ Soffit
- Page 11: Bottom of Panel @ Soffit (Alternate)
- Page 12: Bottom of Panel @ F.C.P Soffit
- Page 13: Bottom of Panel @ F.C.P Soffit (Alternate)
- Page 14: Soffit Termination @ Adjacent Material
- Page 15: Bottom of Panel @ Window Head
- Page 16: Bottom of Panel @ Window Head (Alternate)
- Page 17: Top of Panel @ Window Sill
- Page 18: Panel Edge @ Window Jam
- Page 19: Panel Edge @ Window Jam (Alternate)
- Page 20: Vertical Joint @ Continuous Substrate
- Page 21: Vertical Joint @ Break in Substrate
- Page 22: Not Permitted @ Break in Substrate
- Page 23: Panel Edge @ Butt Joint
- Page 24: Panels @ Outside Corner
- Page 25: Panels @ Inside Corner
- Page 26: Typical Fastener Layout

One-Layer Aluminum Attachment System

XKELEX X-Z19PF GIRT



SCALE: 6"=1'-0"

NOTES:

1. PANEL VERTICAL AND HORIZONTAL JOINT SPACING SHOULD BE 3/8" TYPICAL.



**American Fiber
Cement Corporation**

(303) 972-5107
www.americanfibercement.com

6901 S Pierce St #180, Littleton, CO 80128

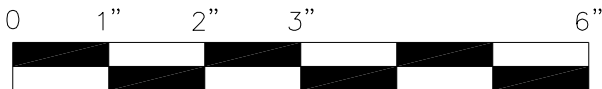
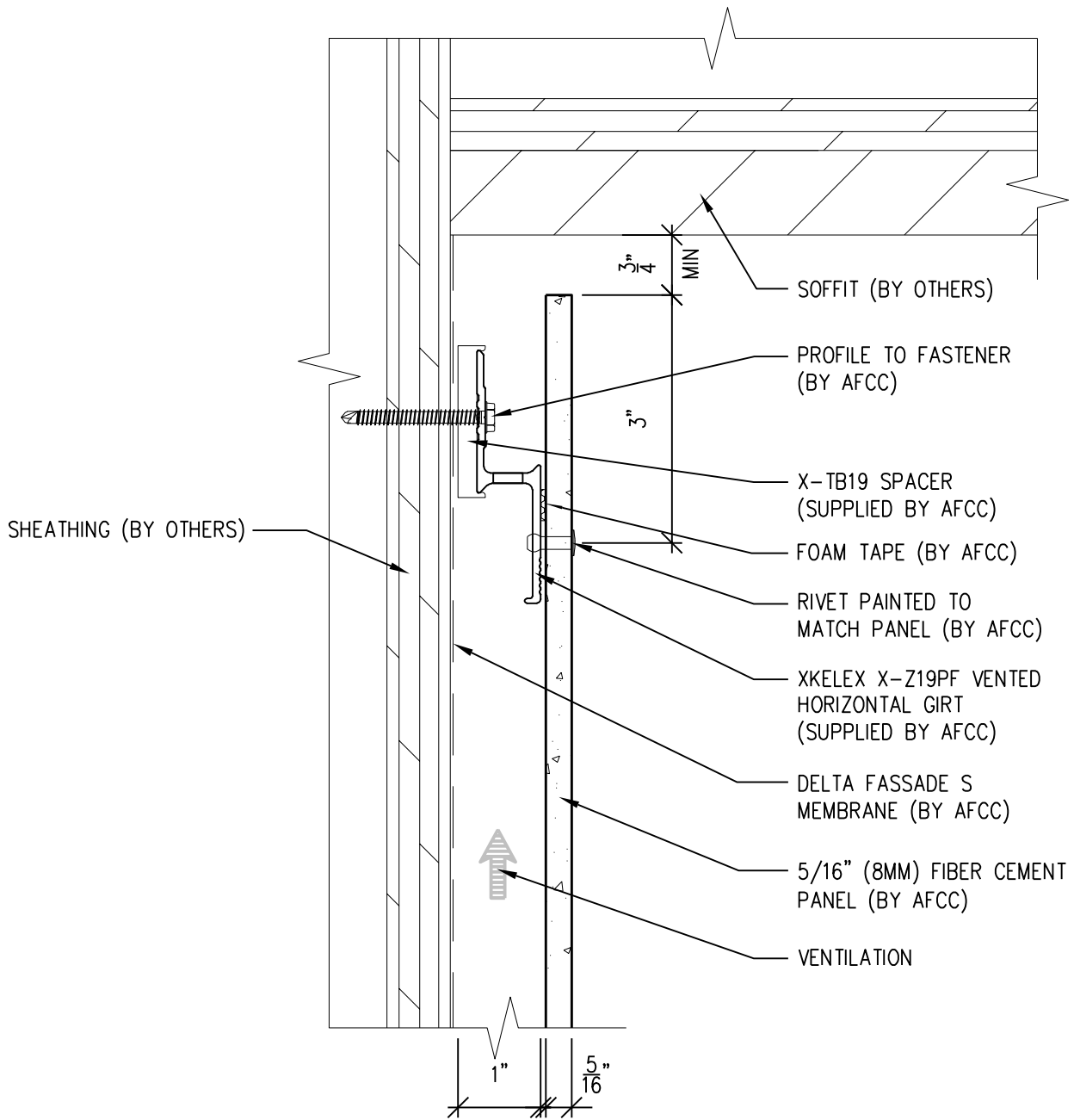
Ref.:

Top of Panel @
Coping

Date: 11/19/2021

One-Layer Aluminum Attachment System

XKELEX X-Z19PF GIRT



SCALE: 6"=1'-0"

NOTES:

1. PANEL VERTICAL AND HORIZONTAL JOINT SPACING SHOULD BE 3/8" TYPICAL.



**American Fiber
Cement Corporation**

(303) 972-5107

www.americanfibercement.com

6901 S Pierce St #180, Littleton, CO 80128

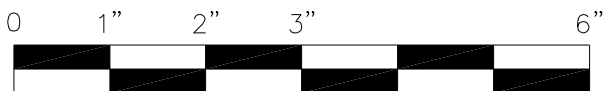
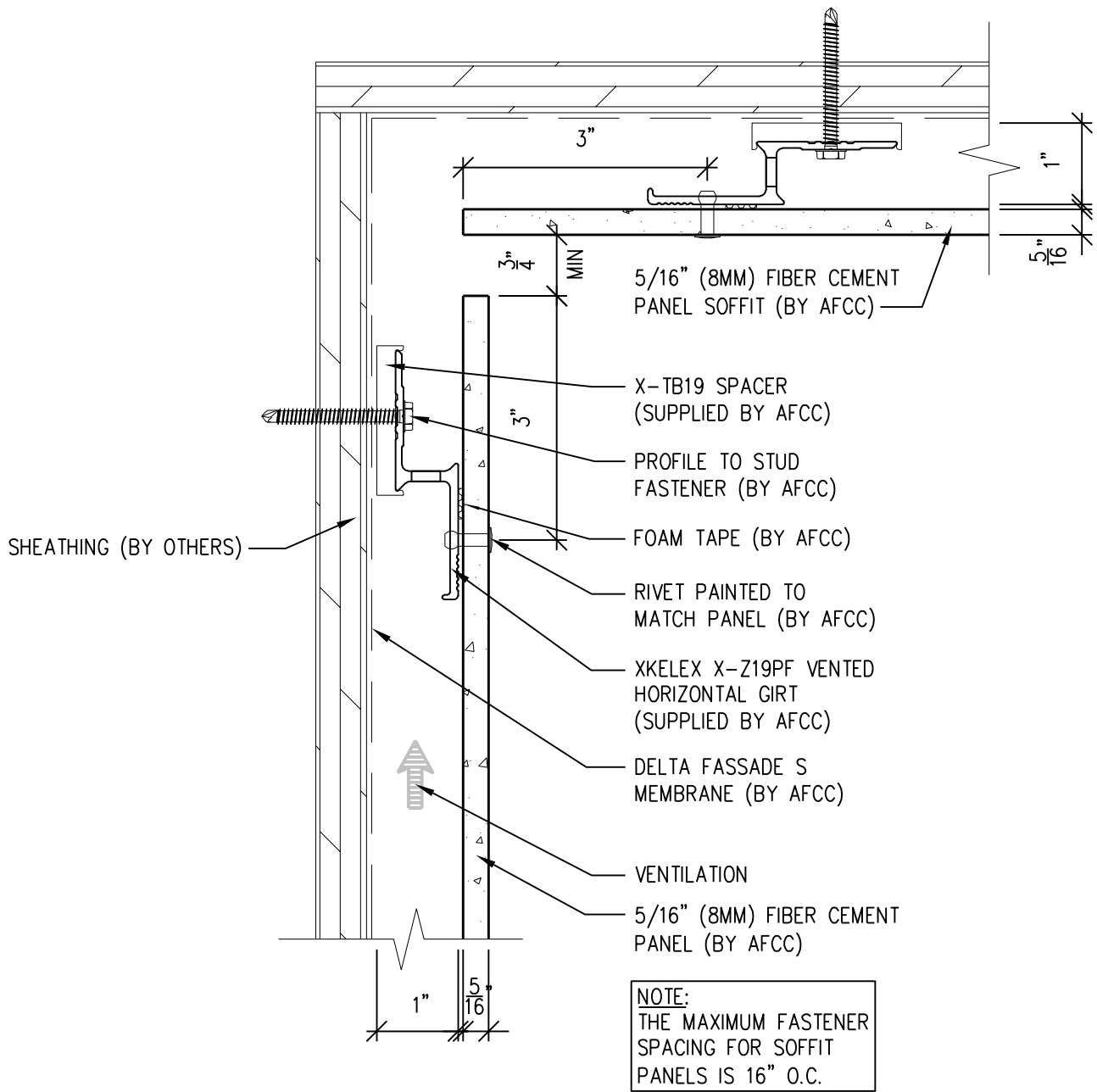
Ref.:

Top of Panel @
Soffit

Date: 11/19/2021

One-Layer Aluminum Attachment System

XKELEX X-Z19PF GIRT



SCALE: 6"=1'-0"

NOTES:

1. PANEL VERTICAL AND HORIZONTAL JOINT SPACING SHOULD BE 3/8" TYPICAL.



American Fiber Cement Corporation (303) 972-5107
www.americanfibercement.com

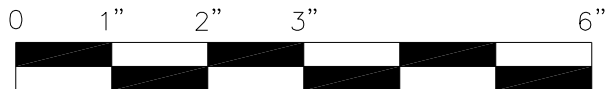
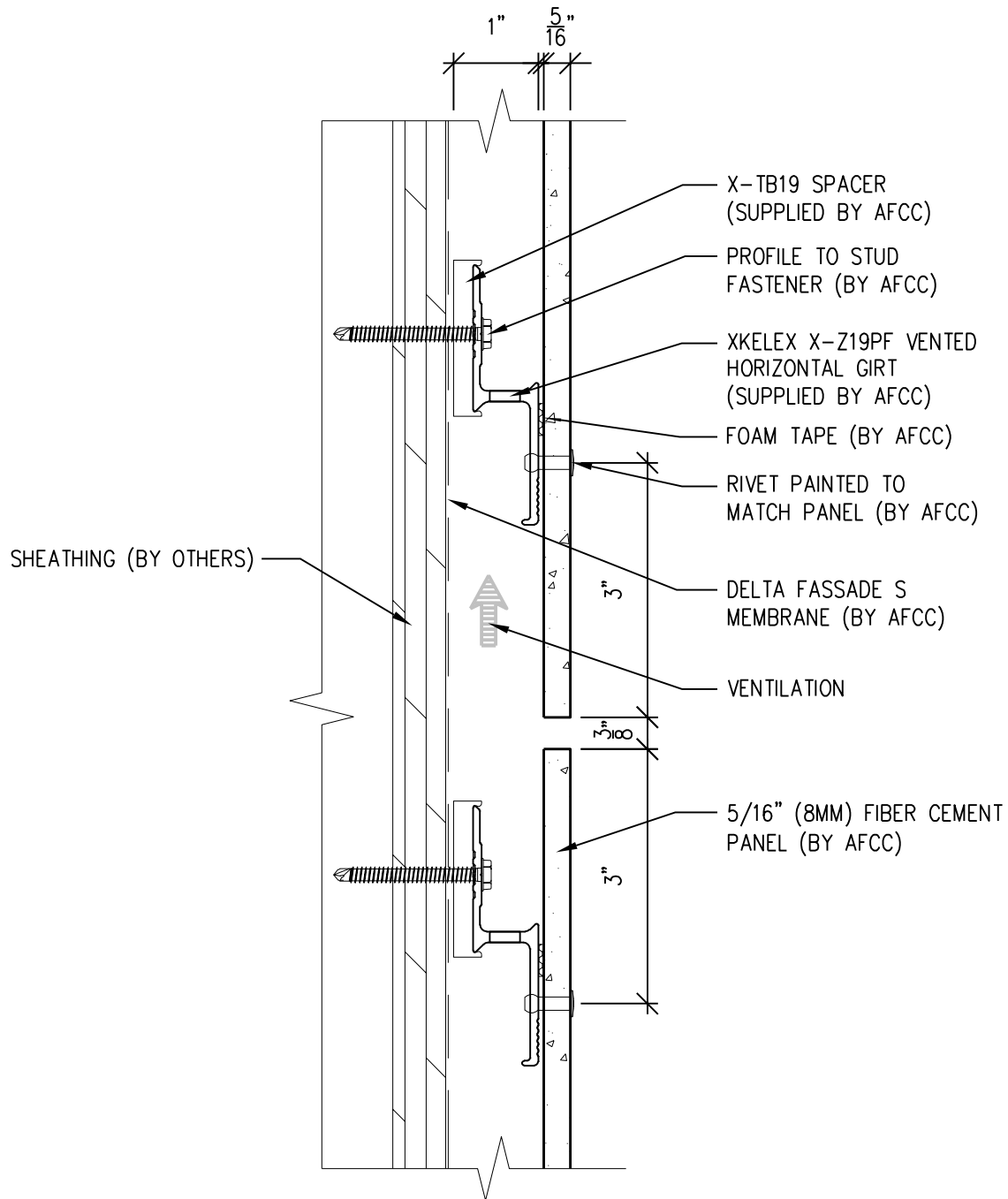
6901 S Pierce St #180, Littleton, CO 80128

Ref.:
Top of Panel @
F.C.P. Soffit

Date: 11/19/2021

One-Layer Aluminum Attachment System

XKELEX X-Z19PF GIRT



SCALE: 6"=1'-0"

NOTES:

1. PANEL VERTICAL AND HORIZONTAL JOINT SPACING SHOULD BE 3/8" TYPICAL.



**American Fiber
Cement Corporation**

(303) 972-5107

www.americanfibercement.com

6901 S Pierce St #180, Littleton, CO 80128

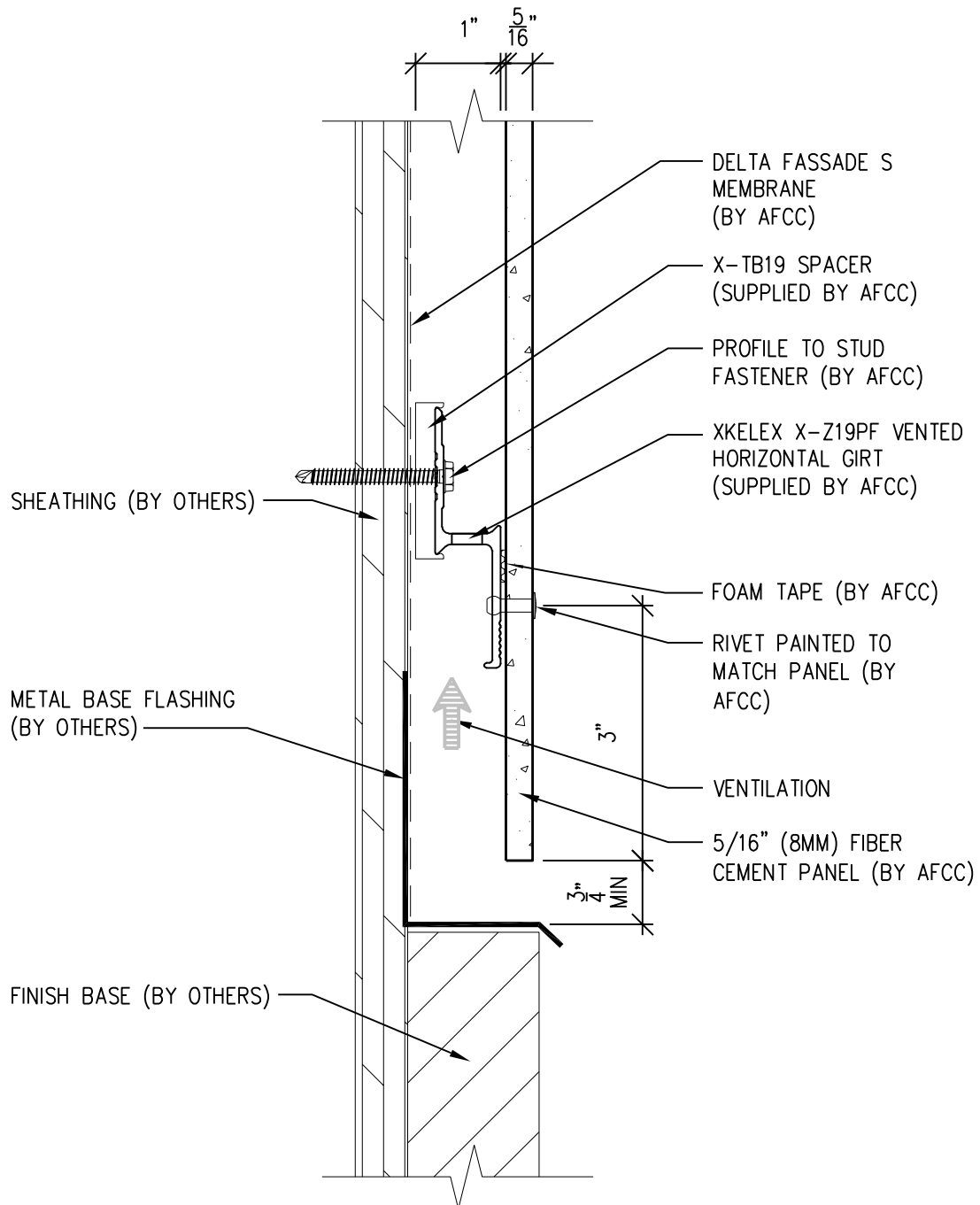
Ref.:

Horizontal Panel Joint

Date: 11/19/2021

One-Layer Aluminum Attachment System

XKELEX X-Z19PF GIRT



SCALE: 6" = 1'-0"

NOTES:

1. PANEL VERTICAL AND HORIZONTAL JOINT SPACING SHOULD BE 3/8" TYPICAL.



**American Fiber
Cement Corporation**

(303) 972-5107

www.americanfibercement.com

6901 S Pierce St #180, Littleton, CO 80128

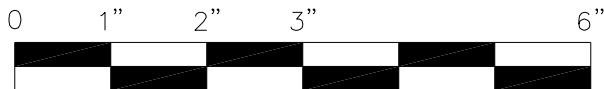
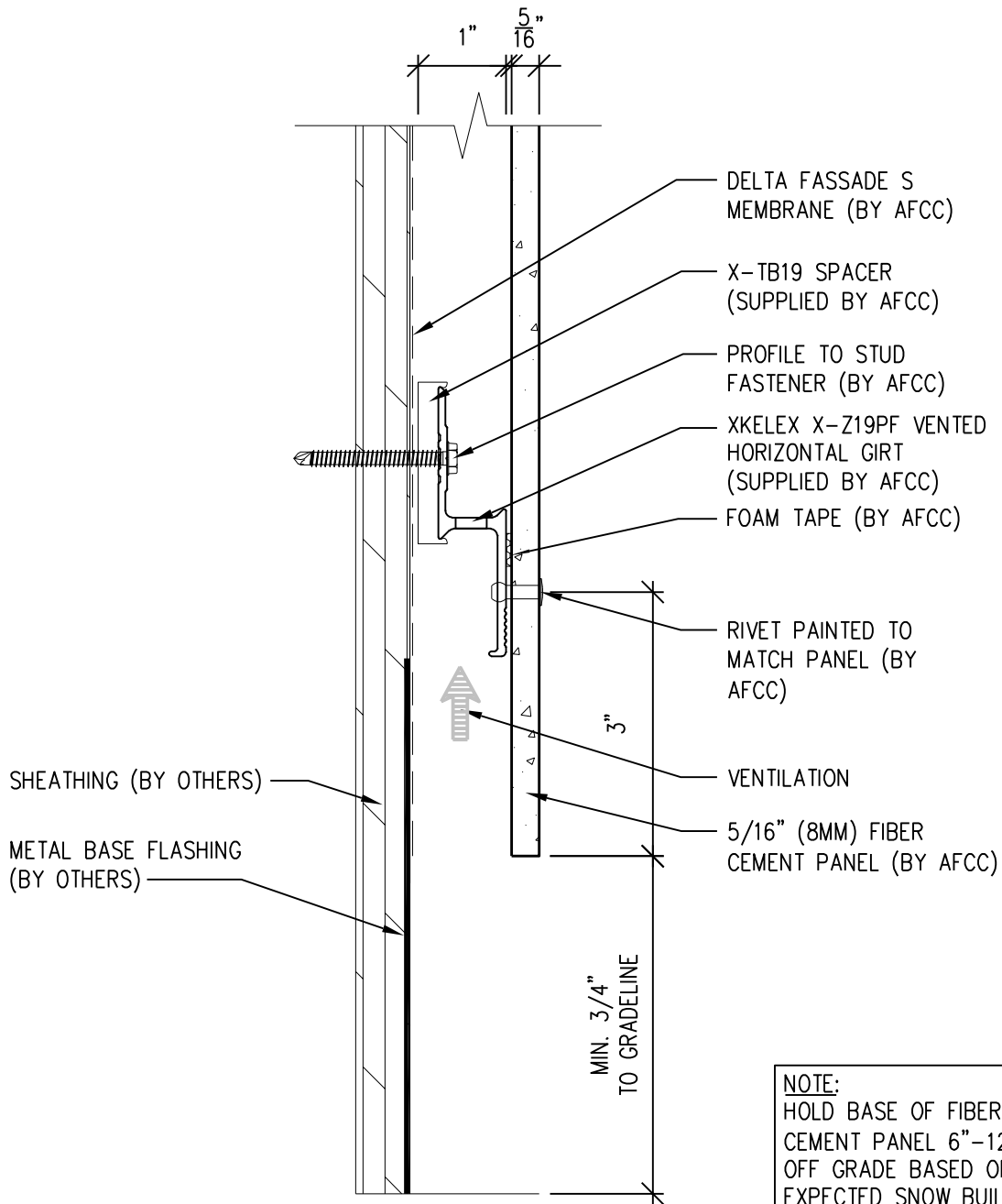
Ref.:

Bottom of Panel @
Wall Base

Date: 11/19/2021

One-Layer Aluminum Attachment System

XKELEX X-Z19PF GIRT



SCALE: 6"=1'-0"

NOTES:

1. PANEL VERTICAL AND HORIZONTAL JOINT SPACING SHOULD BE 3/8" TYPICAL.



**American Fiber
Cement Corporation**

(303) 972-5107

www.americanfibercement.com

6901 S Pierce St #180, Littleton, CO 80128

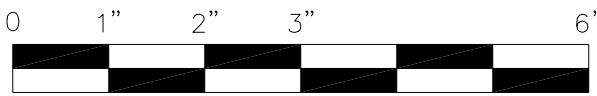
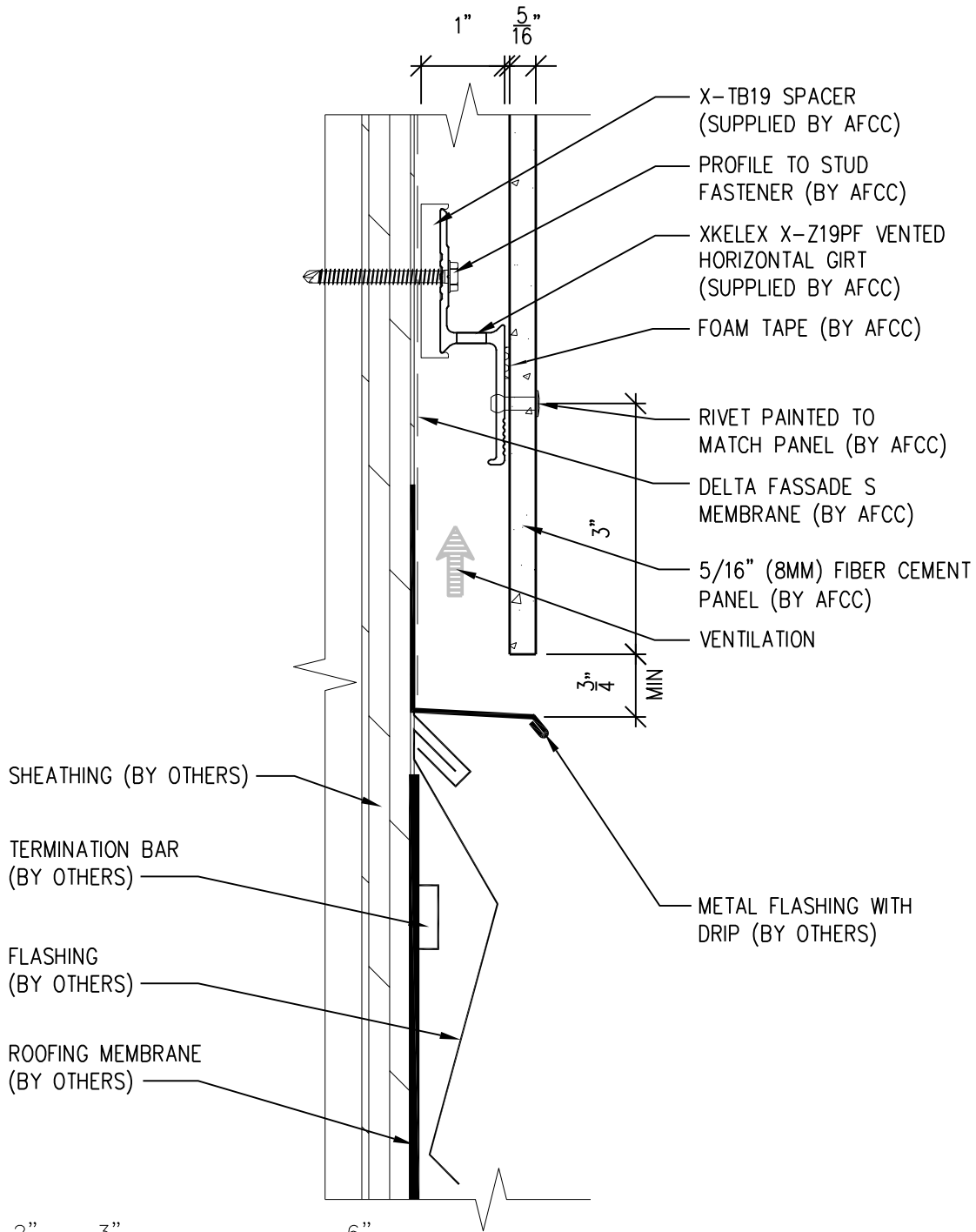
Ref.:

Bottom of Panel @
Open Termination

Date: 11/19/2021

One-Layer Aluminum Attachment System

XKELEX X-Z19PF GIRT



SCALE: 6"=1'-0"

NOTES:

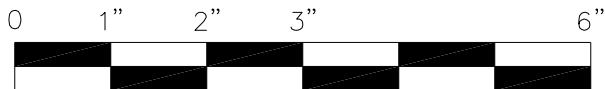
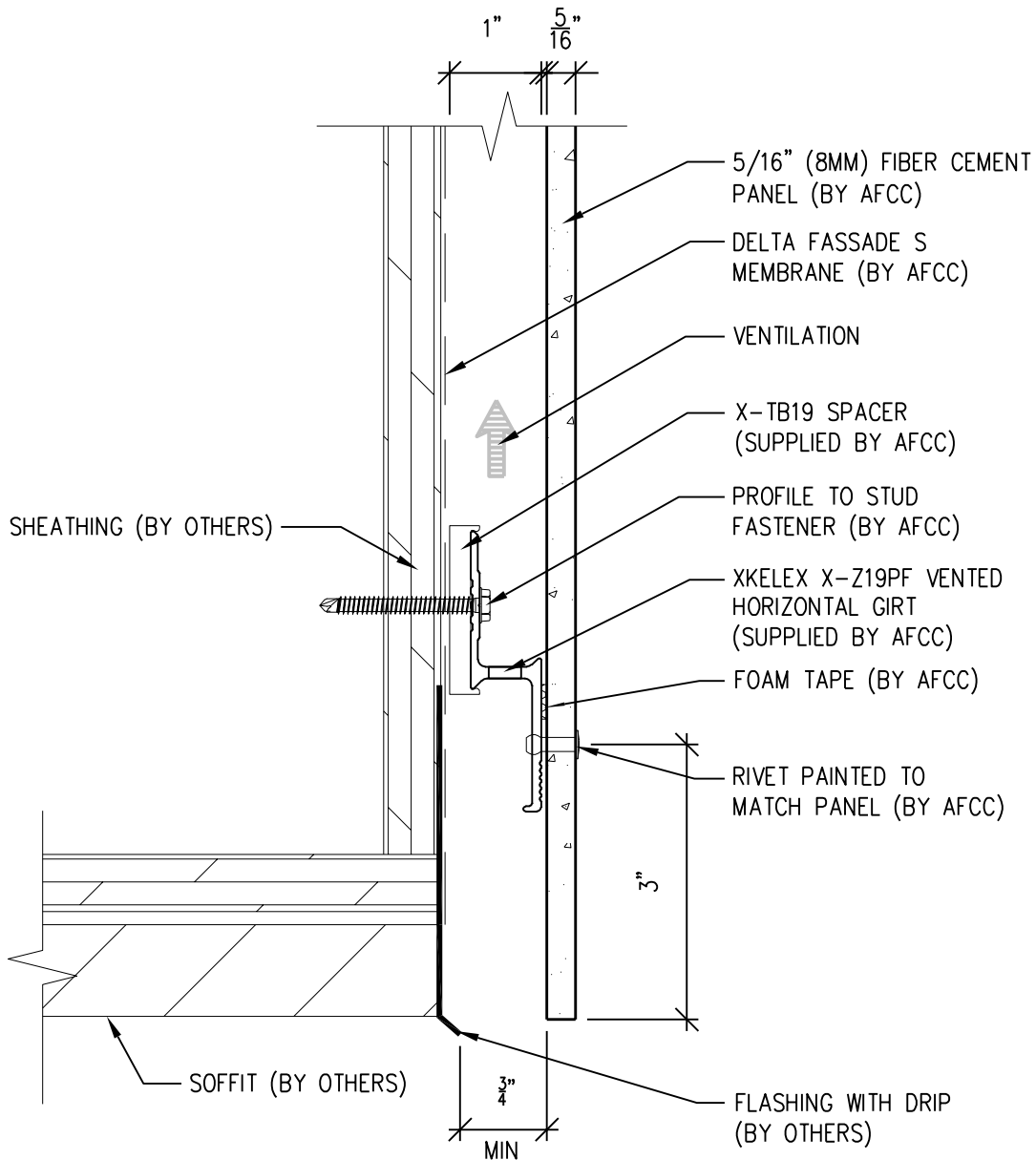
1. PANEL VERTICAL AND HORIZONTAL JOINT SPACING SHOULD BE 3/8" TYPICAL.

 **American Fiber Cement Corporation** (303) 972-5107
www.americanfibercement.com
 6901 S Pierce St #180, Littleton, CO 80128

Ref.: Bottom of Panel @ Low Roof Flashing
 Date: 11/19/2021

One-Layer Aluminum Attachment System

XKELEX X-Z19PF GIRT



SCALE: 6"=1'-0"

NOTES:

1. PANEL VERTICAL AND HORIZONTAL JOINT SPACING SHOULD BE 3/8" TYPICAL.



**American Fiber
Cement Corporation**

(303) 972-5107

www.americanfibercement.com

6901 S Pierce St #180, Littleton, CO 80128

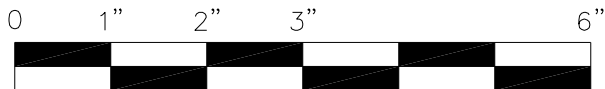
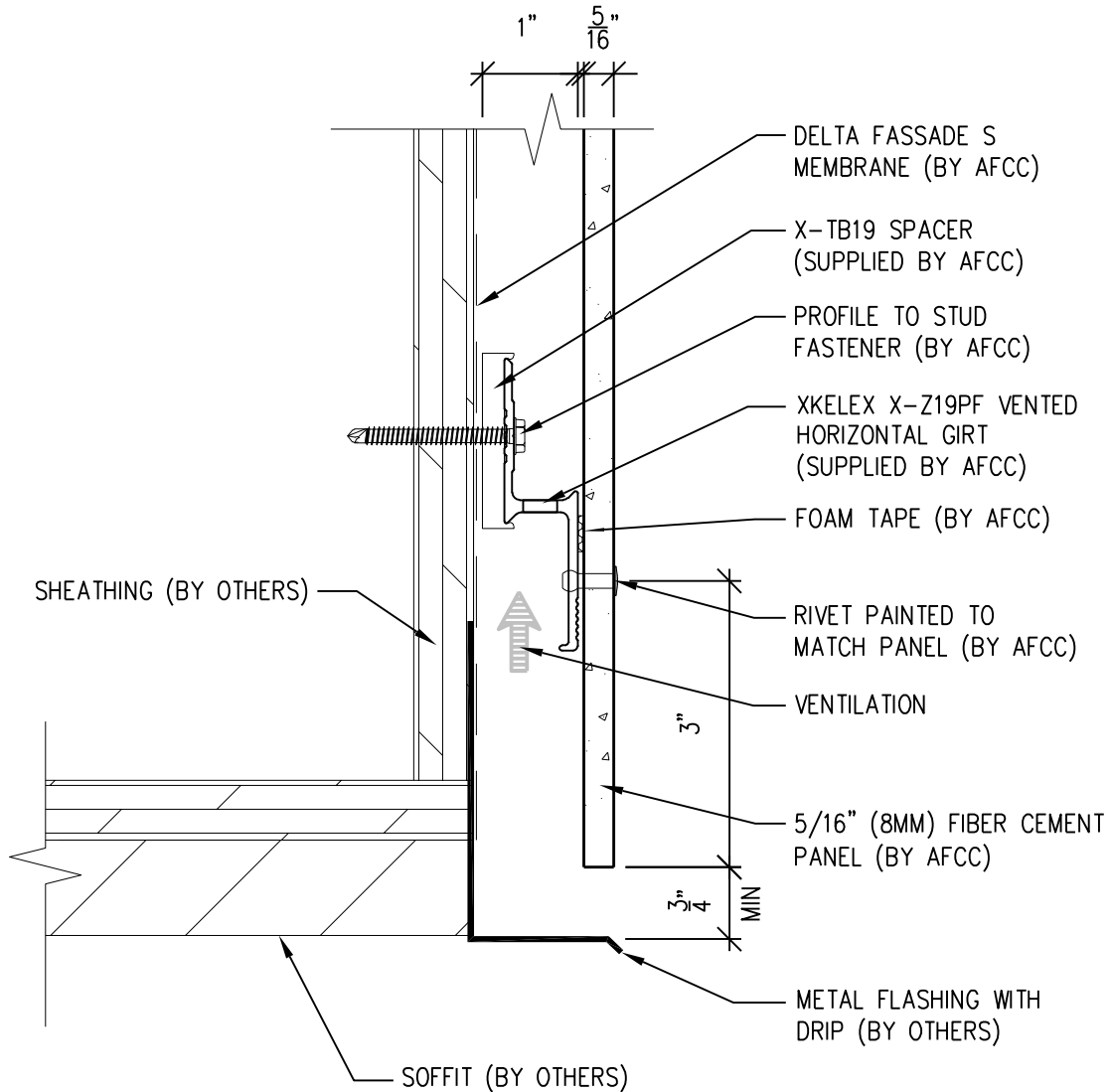
Ref.:

Bottom of Panel @
Soffit

Date: 11/19/2021

One-Layer Aluminum Attachment System

XKELEX X-Z19PF GIRT



SCALE: 6"=1'-0"

NOTES:

1. PANEL VERTICAL AND HORIZONTAL JOINT SPACING SHOULD BE 3/8" TYPICAL.



**American Fiber
Cement Corporation**

(303) 972-5107

www.americanfibercement.com

6901 S Pierce St #180, Littleton, CO 80128

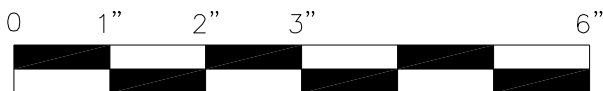
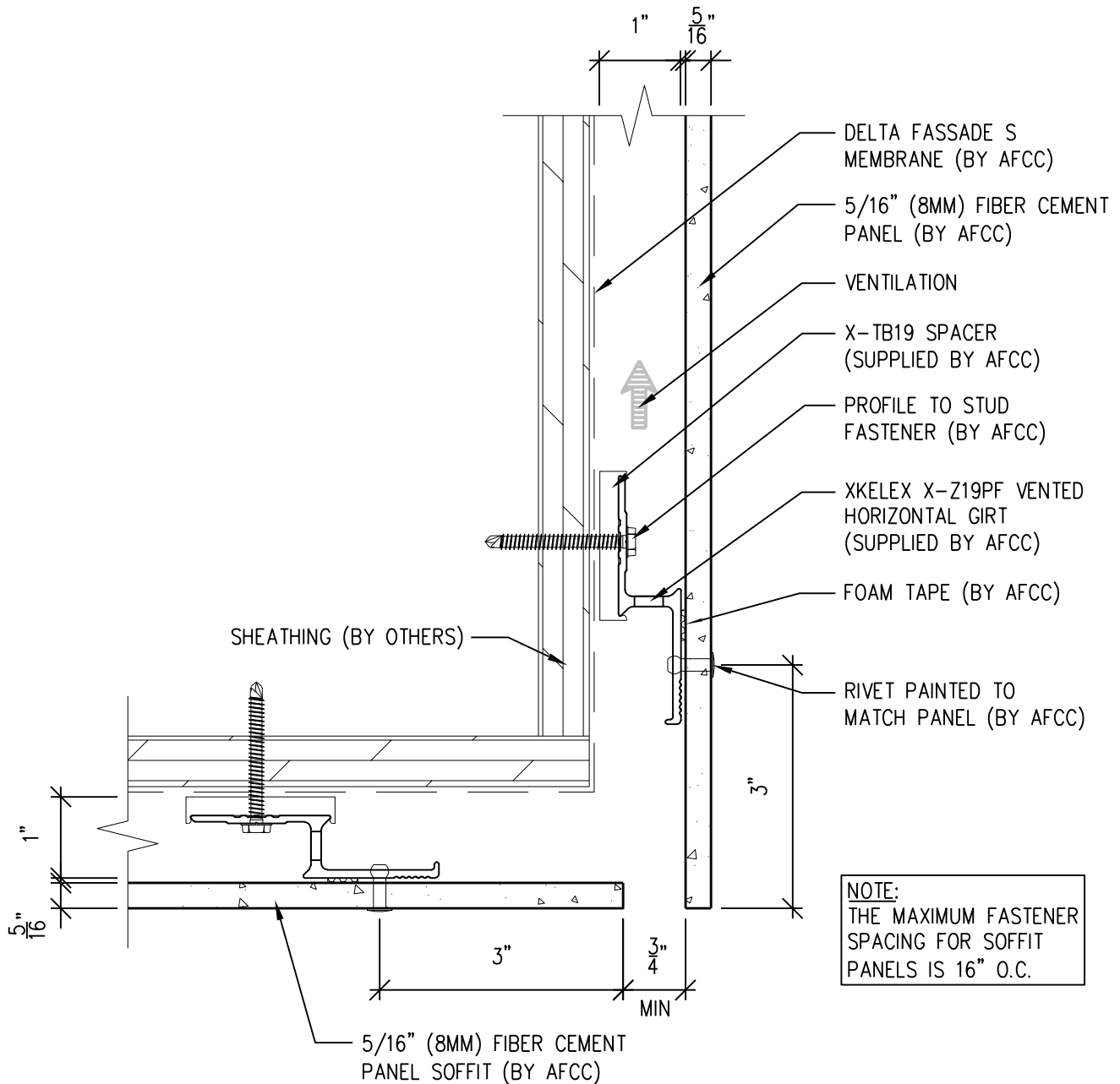
Ref.:

Bottom of Panel @
Soffit (Alternate)

Date: 11/19/2021

One-Layer Aluminum Attachment System

XKELEX X-Z19PF GIRT



SCALE: 6"=1'-0"

NOTES:

1. PANEL VERTICAL AND HORIZONTAL JOINT SPACING SHOULD BE 3/8" TYPICAL.



**American Fiber
Cement Corporation**

(303) 972-5107

www.americanfibercement.com

6901 S Pierce St #180, Littleton, CO 80128

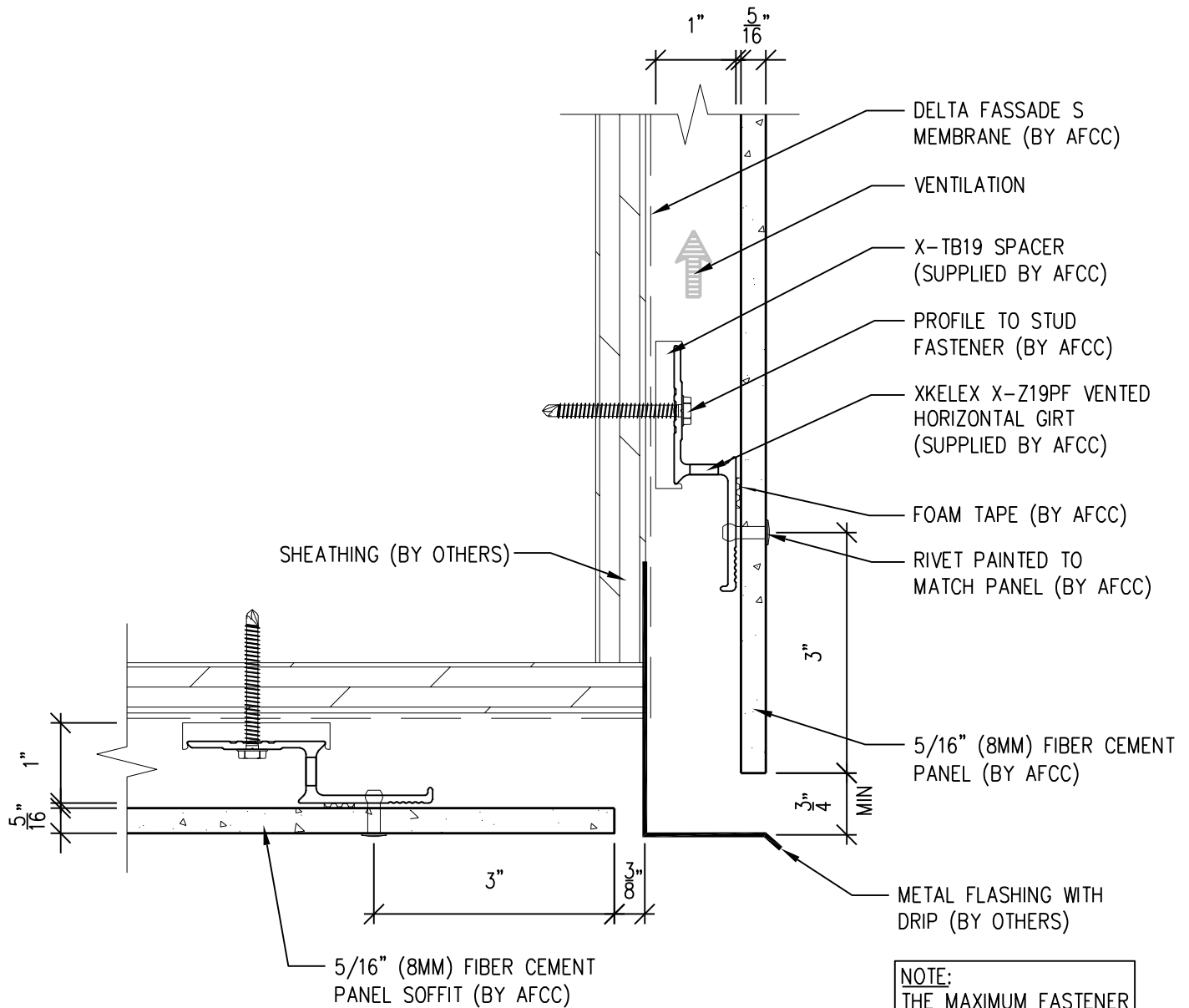
Ref.:

Bottom of Panel @
F.C.P. Soffit

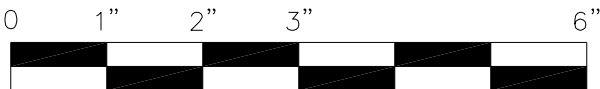
Date: 11/19/2021

One-Layer Aluminum Attachment System

XKELEX X-Z19PF GIRT



NOTE:
THE MAXIMUM FASTENER SPACING FOR SOFFIT PANELS IS 16" O.C.



SCALE: 6"=1'-0"

NOTES:

1. PANEL VERTICAL AND HORIZONTAL JOINT SPACING SHOULD BE 3/8" TYPICAL.



American Fiber Cement Corporation

(303) 972-5107

www.americanfibercement.com

6901 S Pierce St #180, Littleton, CO 80128

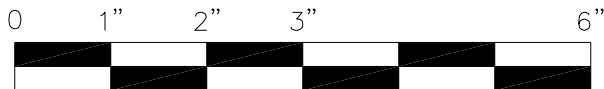
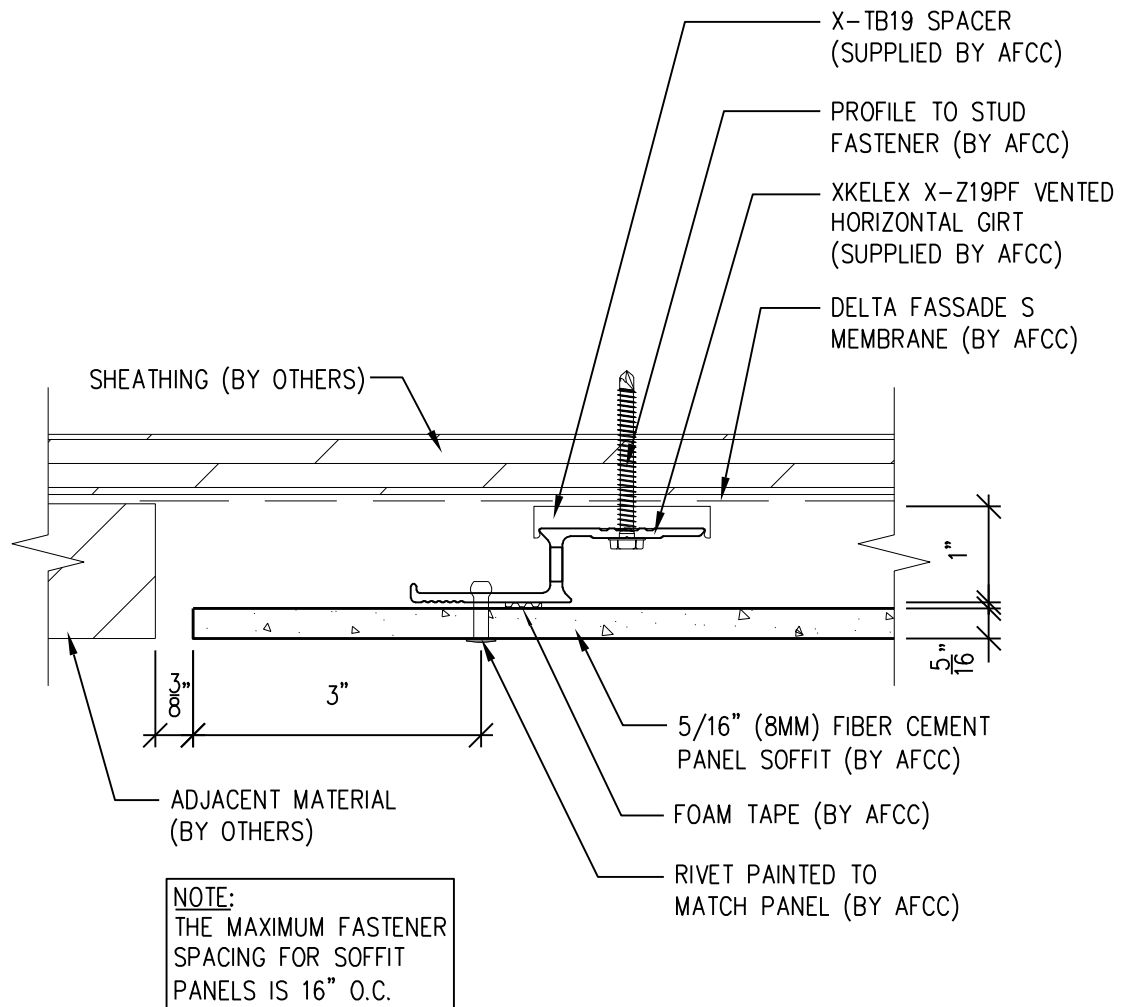
Ref.:

Bottom of Panel @
F.C.P. Soffit (Alternate)

Date: 11/19/2021

One-Layer Aluminum Attachment System

XKELEX X-Z19PF GIRT



SCALE: 6"=1'-0"

NOTES:

1. PANEL VERTICAL AND HORIZONTAL JOINT SPACING SHOULD BE 3/8" TYPICAL.



**American Fiber
Cement Corporation**

(303) 972-5107

www.americanfibercement.com

6901 S Pierce St #180, Littleton, CO 80128

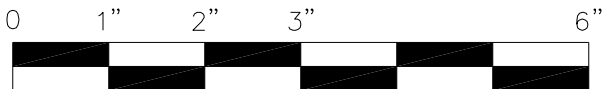
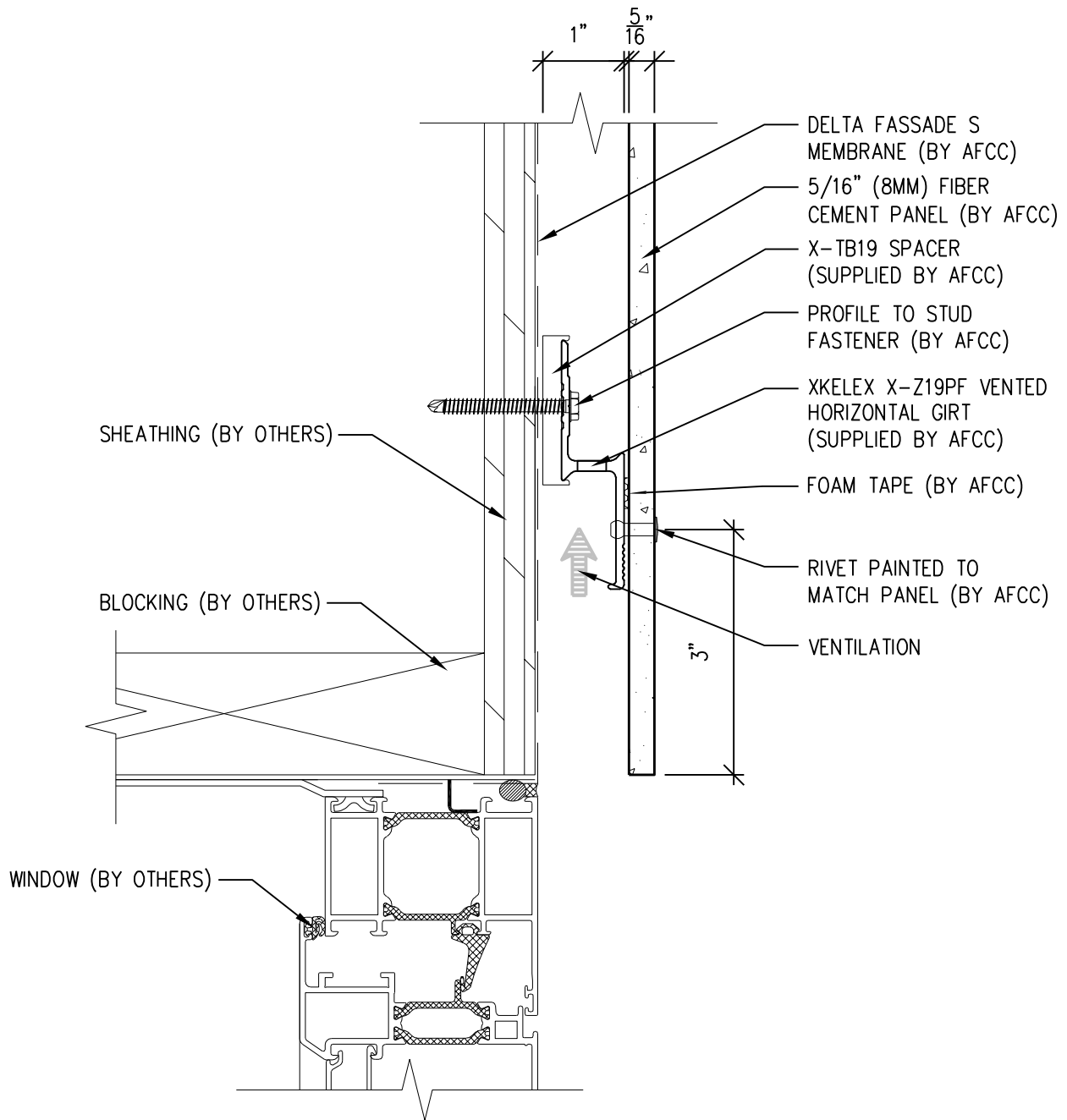
Ref.:

**Soffit Termination @
Adjacent Material**

Date: 11/19/2021

One-Layer Aluminum Attachment System

XKELEX X-Z19PF GIRT



SCALE: 6"=1'-0"

NOTES:

1. PANEL VERTICAL AND HORIZONTAL JOINT SPACING SHOULD BE 3/8" TYPICAL.



**American Fiber
Cement Corporation**

(303) 972-5107

www.americanfibercement.com

6901 S Pierce St #180, Littleton, CO 80128

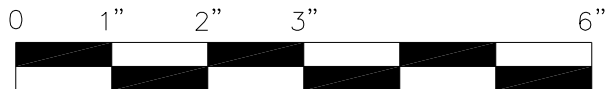
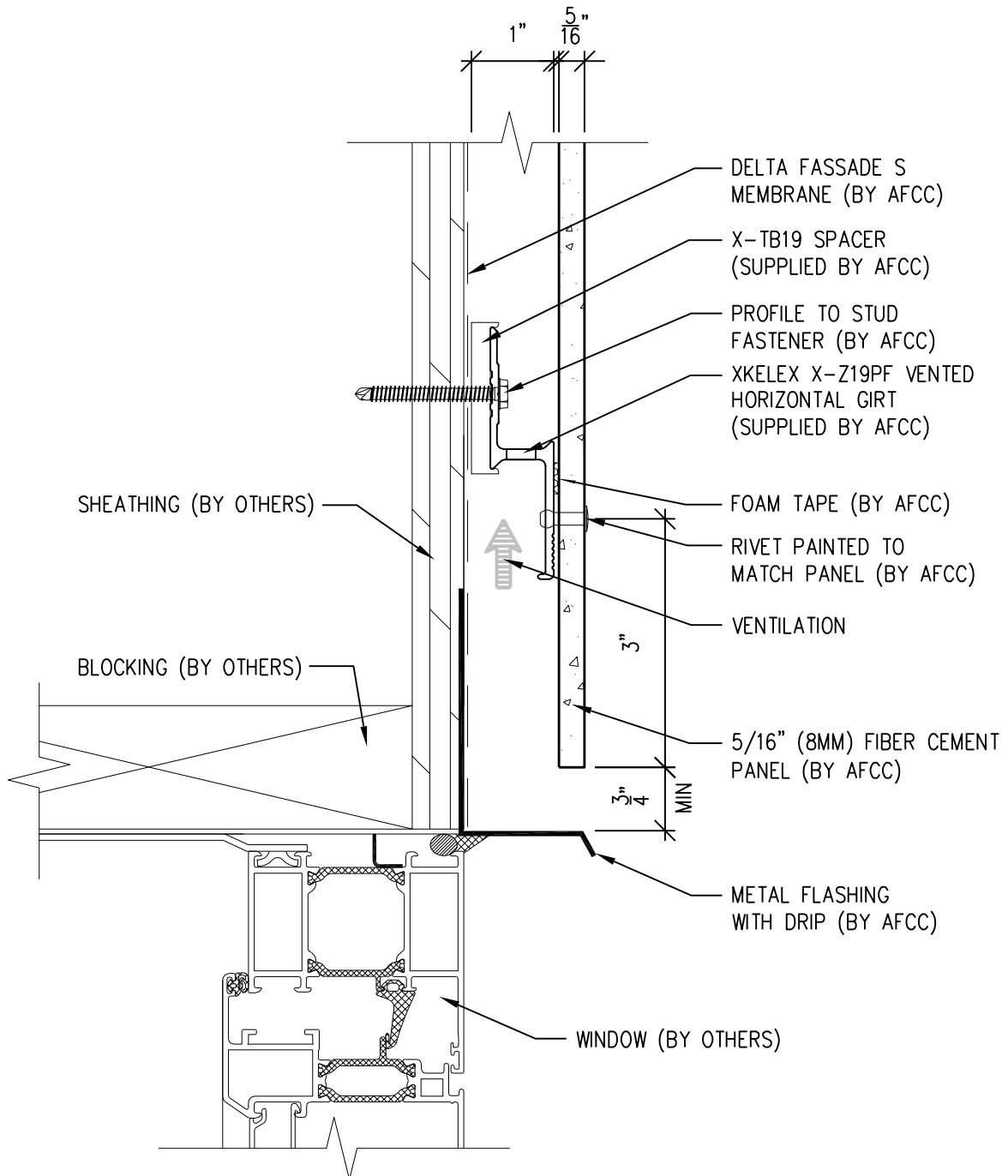
Ref.:

Bottom of Panel @
Window Head

Date: 11/19/2021

One-Layer Aluminum Attachment System

XKELEX X-Z19PF GIRT



SCALE: 6"=1'-0"

NOTES:

1. PANEL VERTICAL AND HORIZONTAL JOINT SPACING SHOULD BE 3/8" TYPICAL.



**American Fiber
Cement Corporation**

(303) 972-5107

www.americanfibercement.com

6901 S Pierce St #180, Littleton, CO 80128

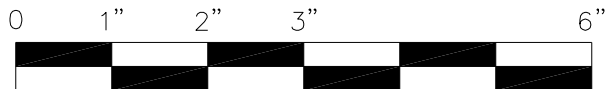
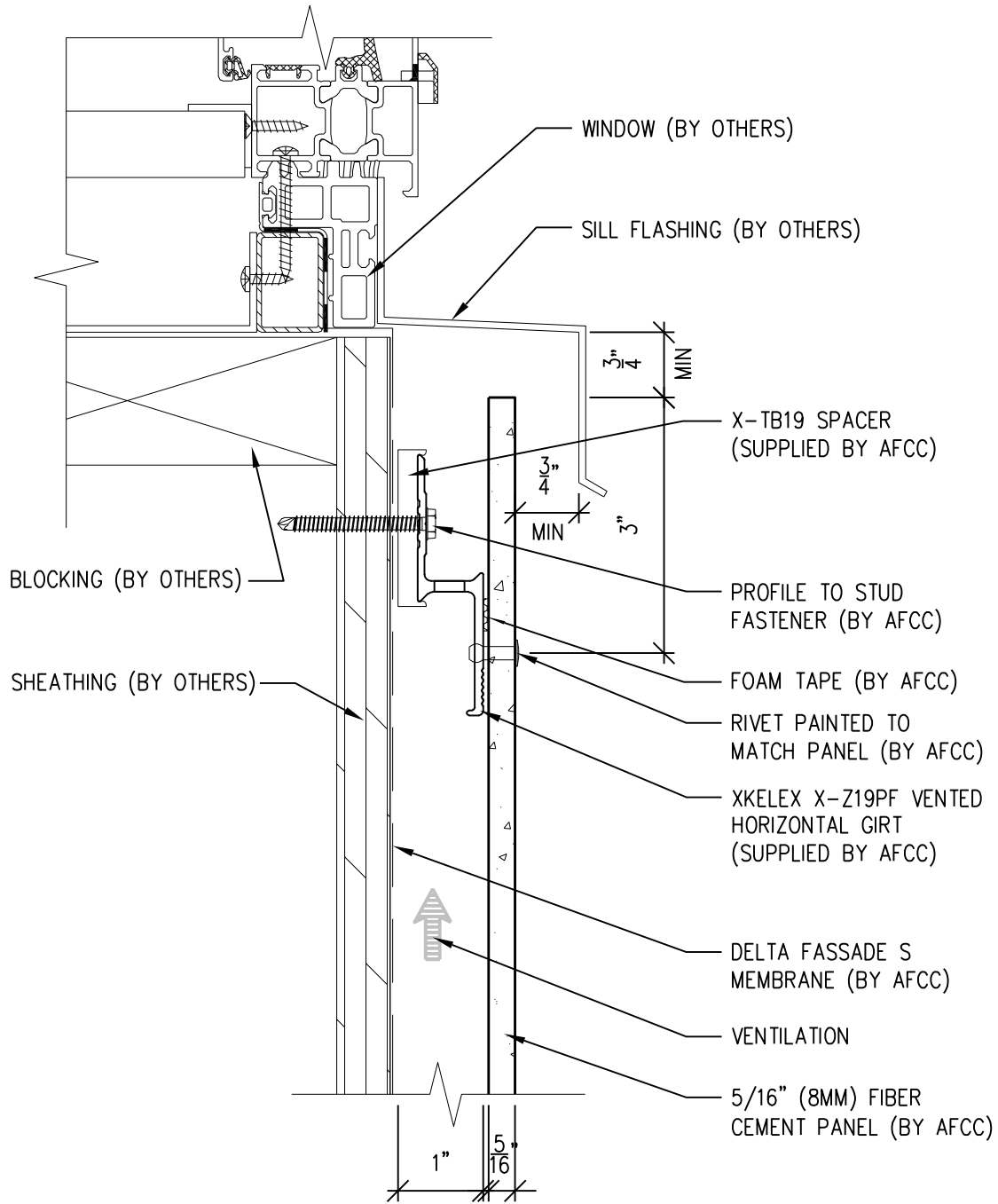
Ref.:

Bottom of Panel @
Window Head (Alternate)

Date: 11/19/2021

One-Layer Aluminum Attachment System

XKELEX X-Z19PF GIRT



SCALE: 6"=1'-0"

NOTES:

1. PANEL VERTICAL AND HORIZONTAL JOINT SPACING SHOULD BE 3/8" TYPICAL.



**American Fiber
Cement Corporation**

(303) 972-5107

www.americanfibercement.com

6901 S Pierce St #180, Littleton, CO 80128

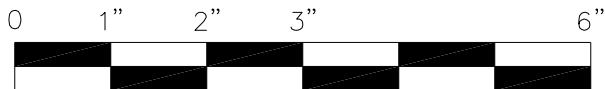
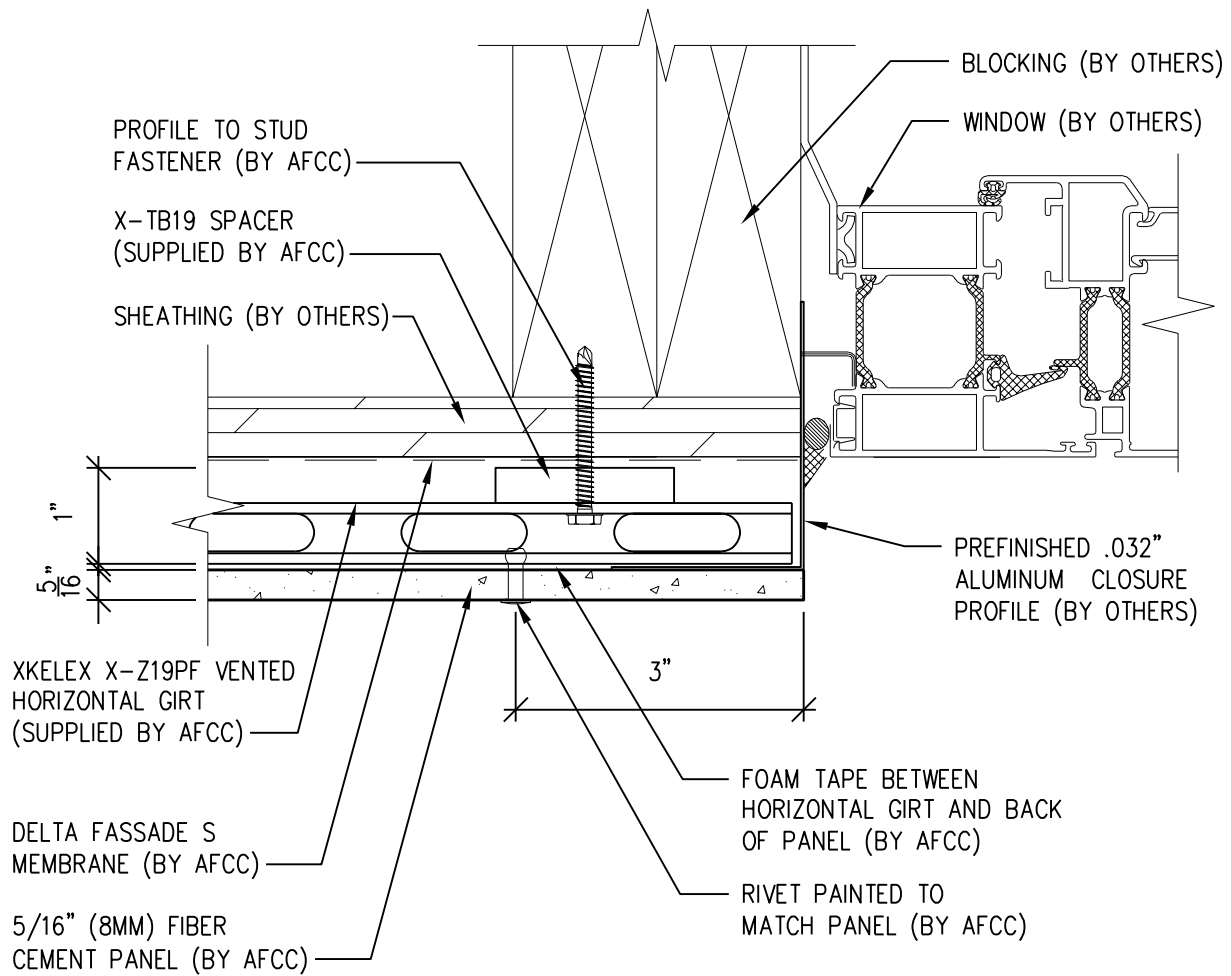
Ref.:

Top of Panel @
Window Sill

Date: 11/19/2021

One-Layer Aluminum Attachment System

XKELEX X-Z19PF GIRT



SCALE: 6"=1'-0"

NOTES:

1. PANEL VERTICAL AND HORIZONTAL JOINT SPACING SHOULD BE 3/8" TYPICAL.



**American Fiber
Cement Corporation**

(303) 972-5107

www.americanfibercement.com

6901 S Pierce St #180, Littleton, CO 80128

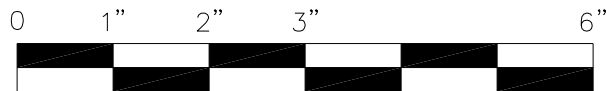
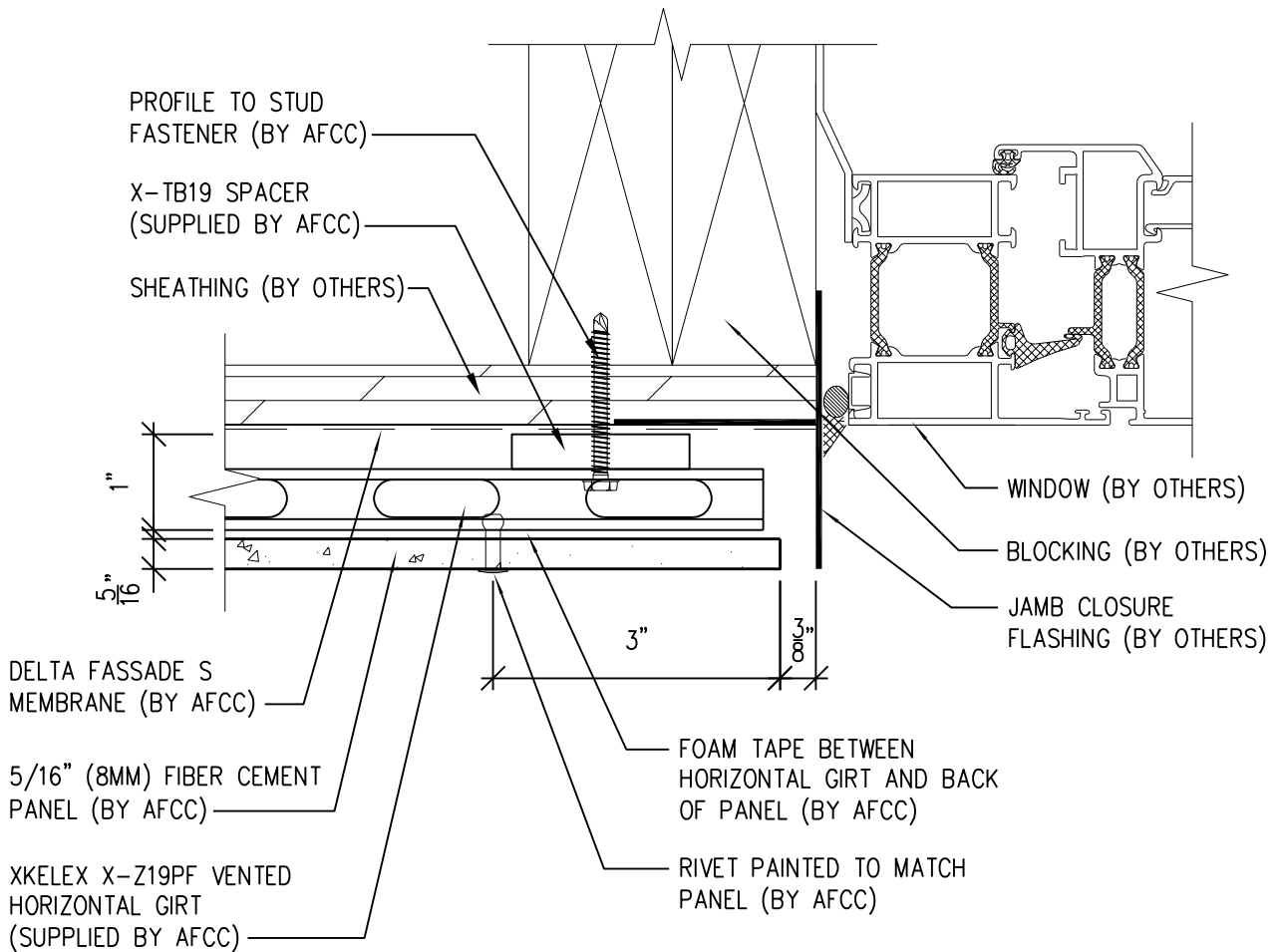
Ref.:

Panel Edge @
Window Jamb

Date: 11/19/2021

One-Layer Aluminum Attachment System

XKELEX X-Z19PF GIRT



SCALE: 6"=1'-0"

NOTES:

1. PANEL VERTICAL AND HORIZONTAL JOINT SPACING SHOULD BE 3/8" TYPICAL.



**American Fiber
Cement Corporation**

(303) 972-5107
www.americanfibercement.com

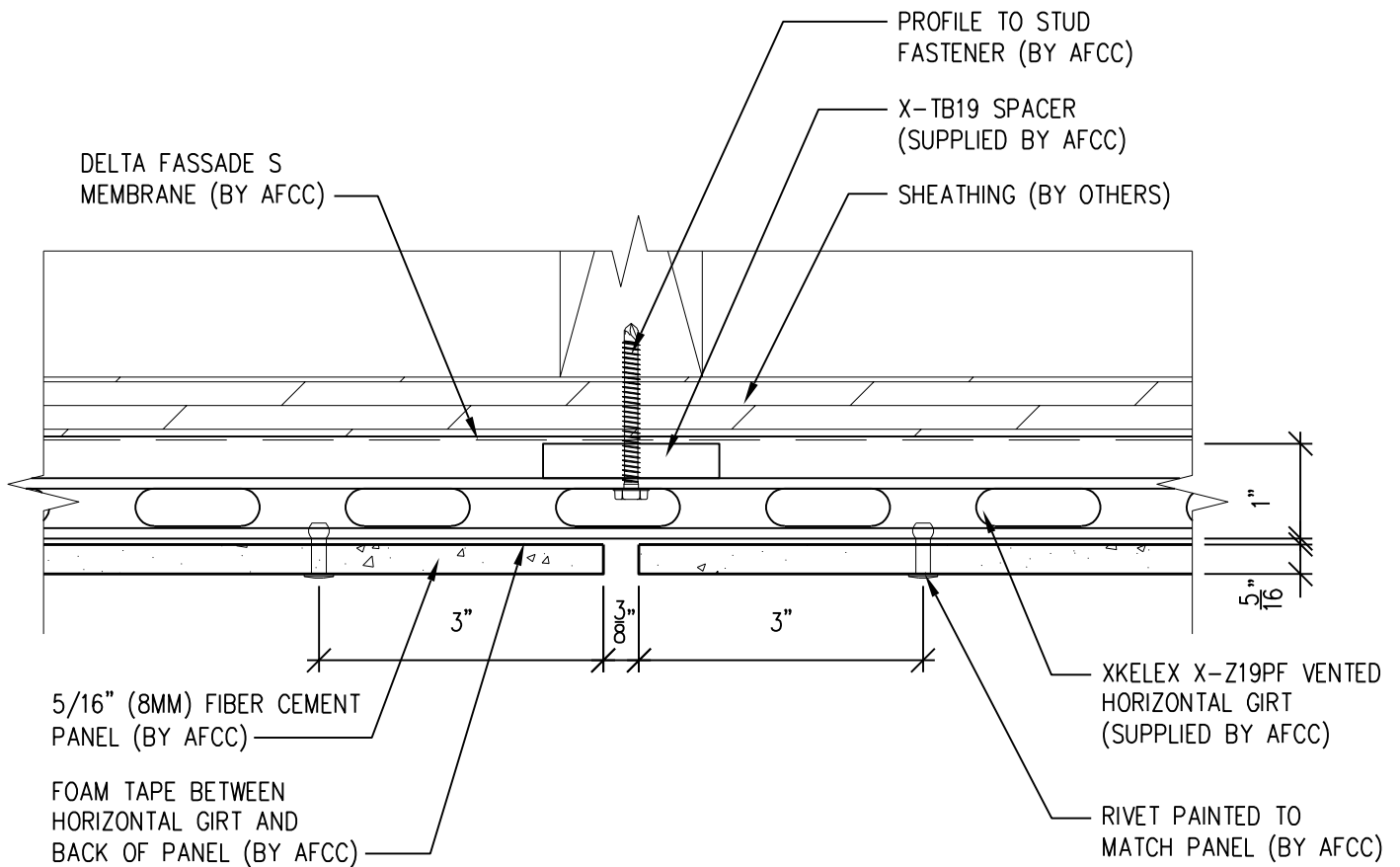
6901 S Pierce St #180, Littleton, CO 80128

Ref.:
Panel Edge @
Window Jamb (Alternate)

Date: 11/19/2021

One-Layer Aluminum Attachment System

XKELEX X-Z19PF GIRT



SCALE: 6"=1'-0"

NOTES:

1. PANEL VERTICAL AND HORIZONTAL JOINT SPACING SHOULD BE 3/8" TYPICAL.



**American Fiber
Cement Corporation**

(303) 972-5107

www.americanfibercement.com

6901 S Pierce St #180, Littleton, CO 80128

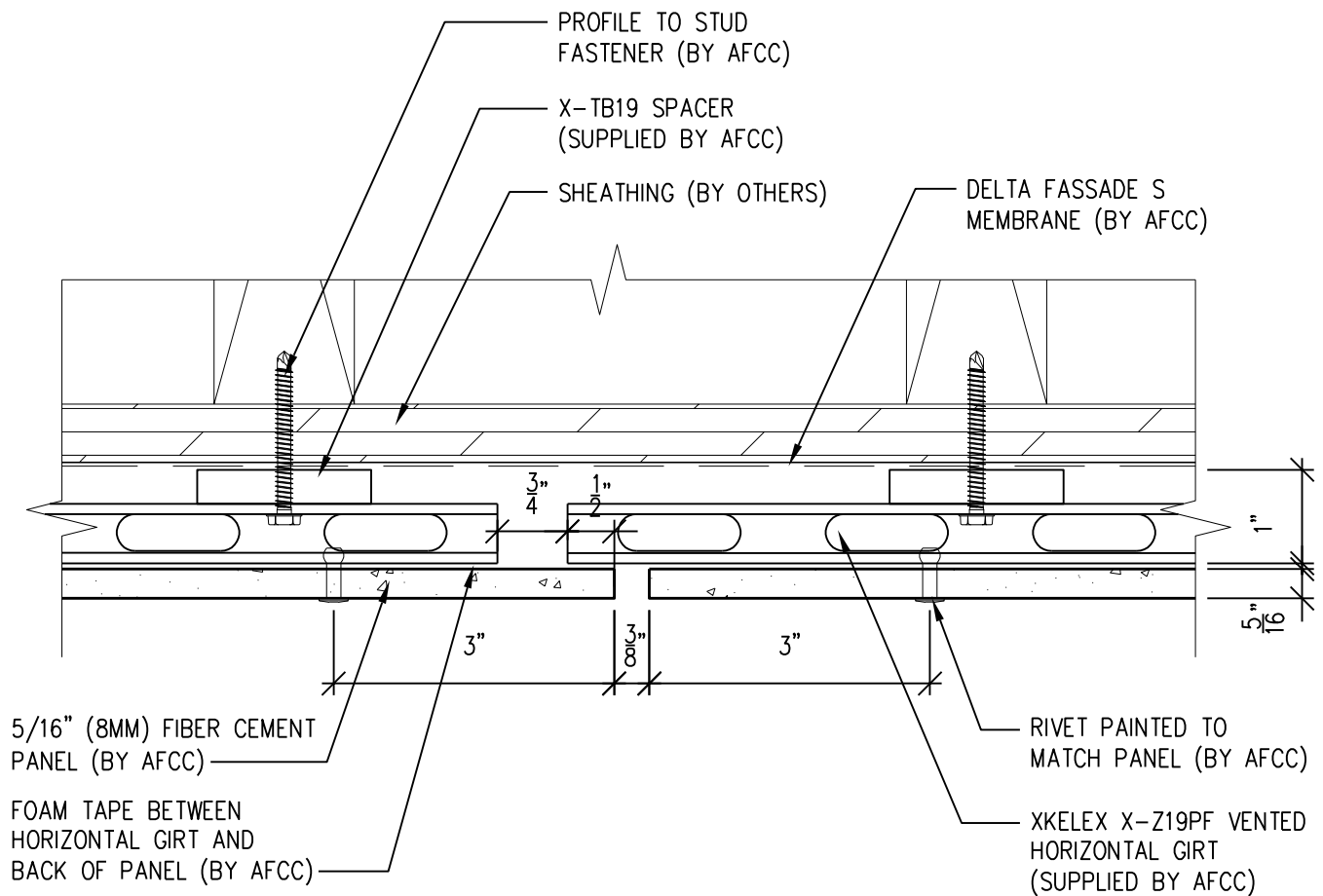
Ref.:

Vertical Joint @
Continuous Substrate

Date: 11/19/2021

One-Layer Aluminum Attachment System

XKELEX X-Z19PF GIRT



SCALE: 6"=1'-0"

NOTES:

- PANEL VERTICAL AND HORIZONTAL JOINT SPACING SHOULD BE 3/8" TYPICAL.



**American Fiber
Cement Corporation**

(303) 972-5107

www.americanfibercement.com

6901 S Pierce St #180, Littleton, CO 80128

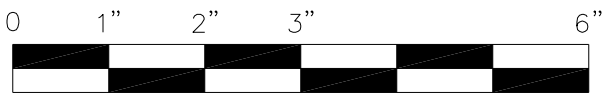
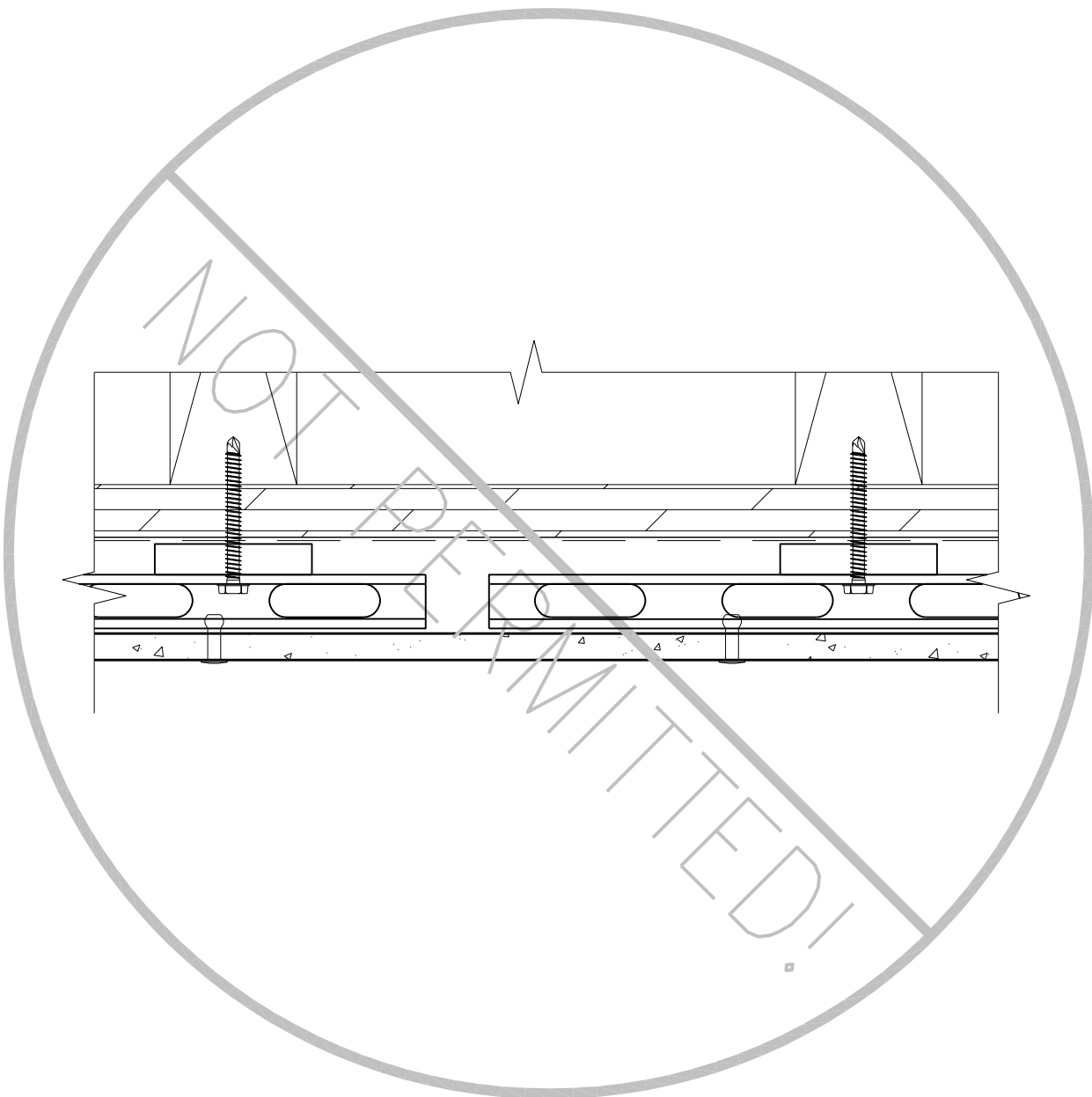
Ref.:

Vertical Joint @
Break in Substrate

Date: 11/19/2021

One-Layer Aluminum Attachment System

XKELEX X-Z19PF GIRT



SCALE: 6"=1'-0"

NOTES:

- 1. PANEL VERTICAL AND HORIZONTAL JOINT SPACING SHOULD BE 3/8" TYPICAL.



American Fiber Cement Corporation (303) 972-5107
www.americanfibercement.com

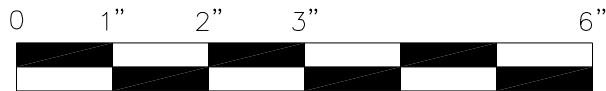
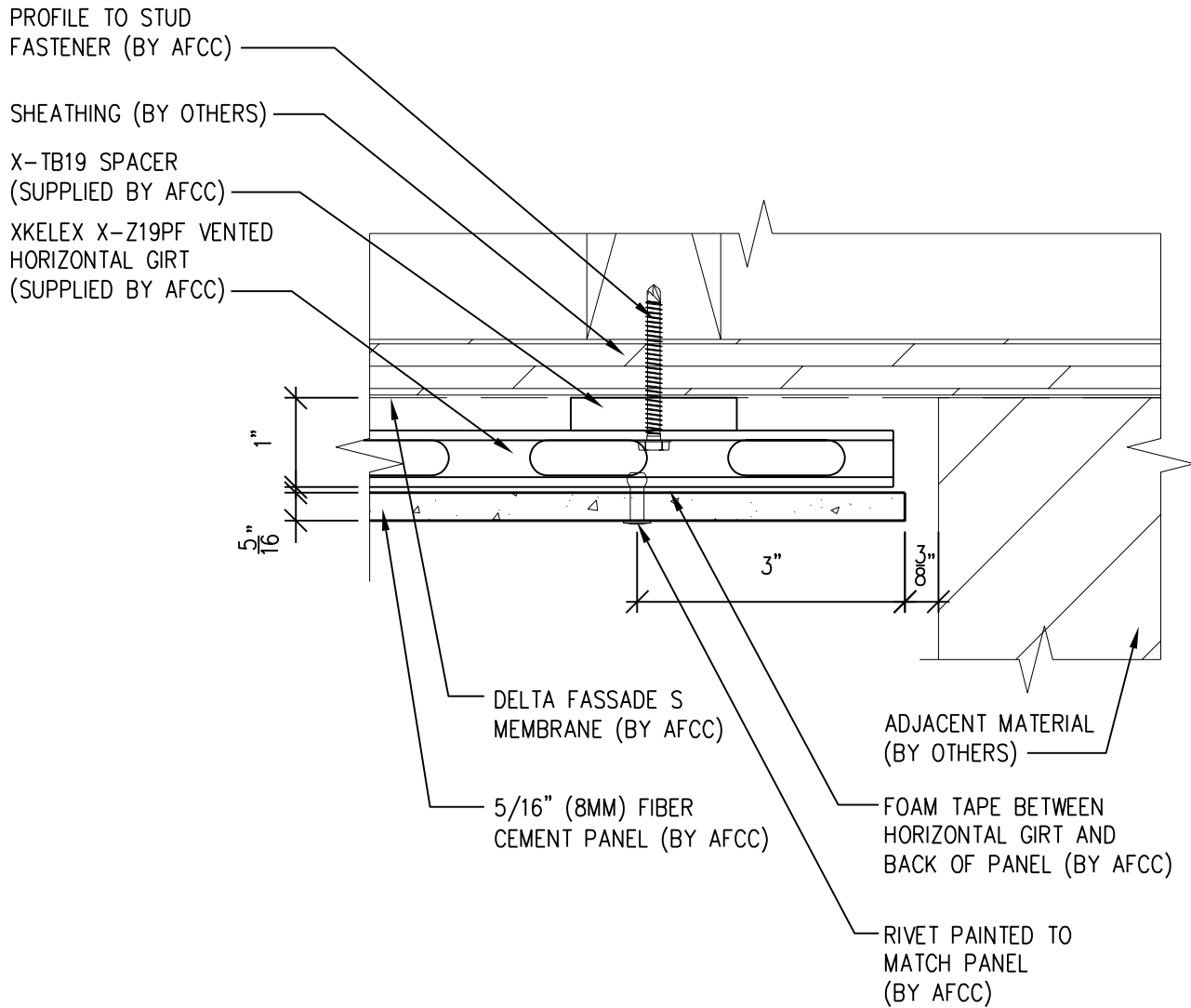
Ref.:
**Not Permitted @
Break in Substrate**

Date: 11/19/2021

6901 S Pierce St #180, Littleton, CO 80128

One-Layer Aluminum Attachment System

XKELEX X-Z19PF GIRT



SCALE: 6"=1'-0"

NOTES:

1. PANEL VERTICAL AND HORIZONTAL JOINT SPACING SHOULD BE 3/8" TYPICAL.



**American Fiber
Cement Corporation**

(303) 972-5107

www.americanfibercement.com

6901 S Pierce St #180, Littleton, CO 80128

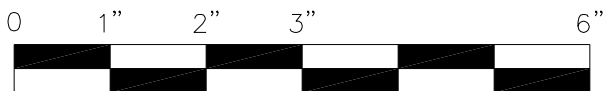
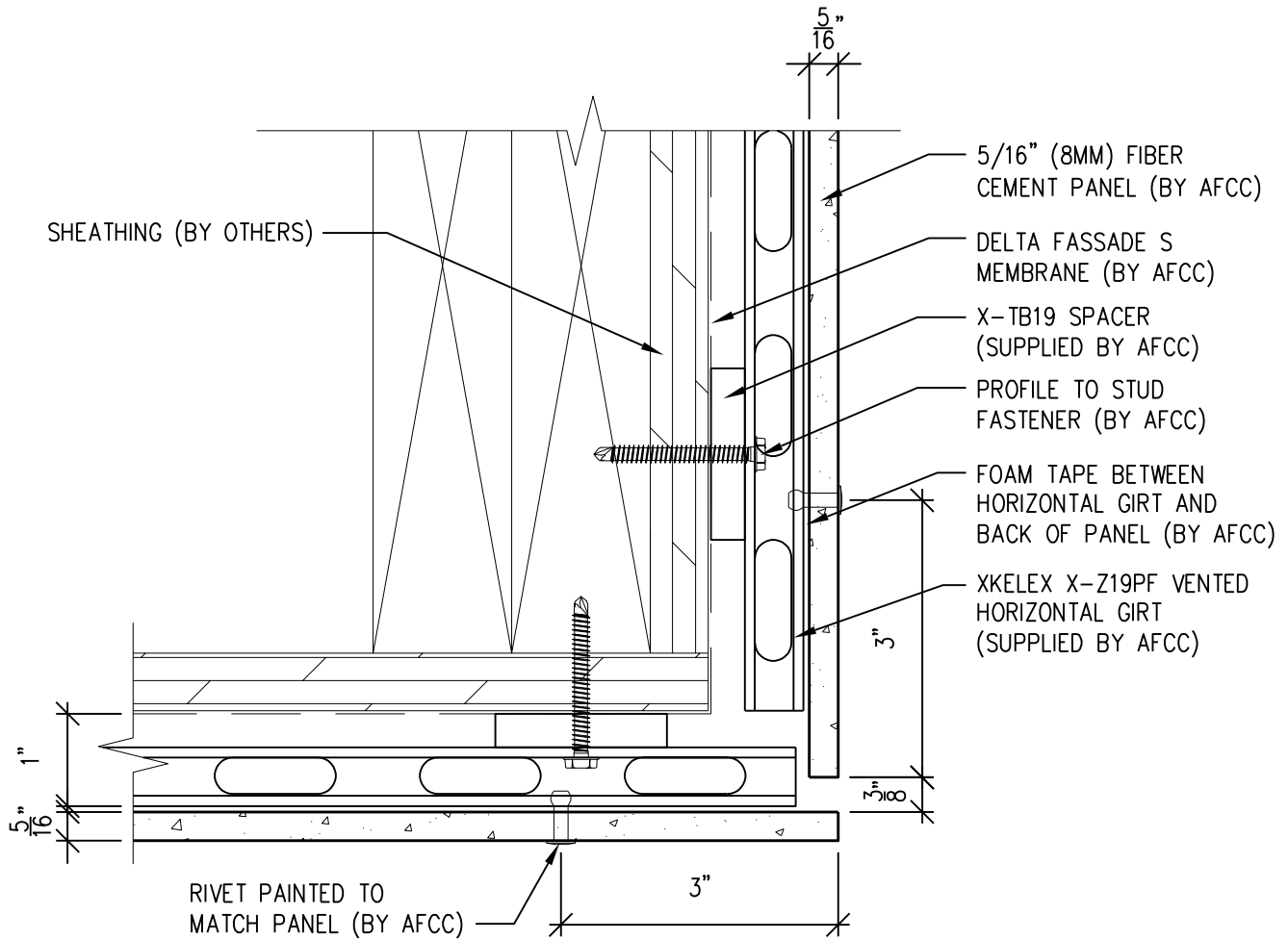
Ref.:

Panel Edge @
Butt Joint

Date: 11/19/2021

One-Layer Aluminum Attachment System

XKELEX X-Z19PF GIRT



SCALE: 6" = 1'-0"

NOTES:

1. PANEL VERTICAL AND HORIZONTAL JOINT SPACING SHOULD BE 3/8" TYPICAL.



American Fiber Cement Corporation
 (303) 972-5107
www.americanfibercement.com

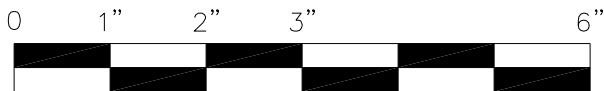
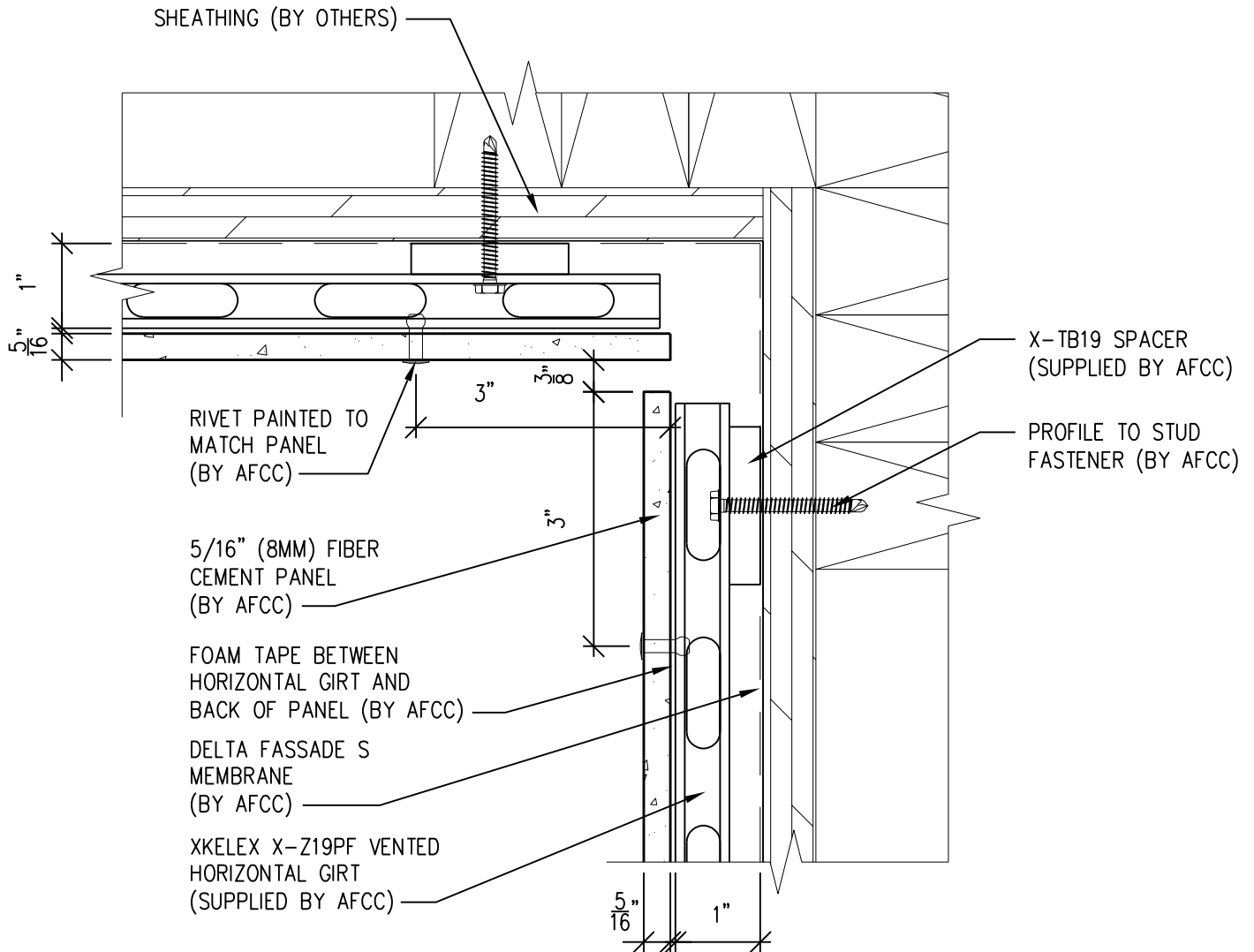
6901 S Pierce St #180, Littleton, CO 80128

Ref.:
**Panels @
 Outside Corner**

Date: 11/19/2021

One-Layer Aluminum Attachment System

XKELEX X-Z19PF GIRT



SCALE: 6"=1'-0"

NOTES:

1. PANEL VERTICAL AND HORIZONTAL JOINT SPACING SHOULD BE 3/8" TYPICAL.



**American Fiber
Cement Corporation**

(303) 972-5107
www.americanfibercement.com

6901 S Pierce St #180, Littleton, CO 80128

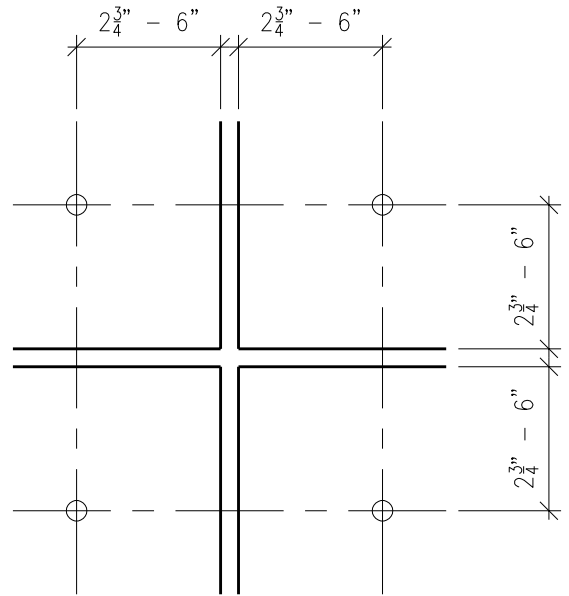
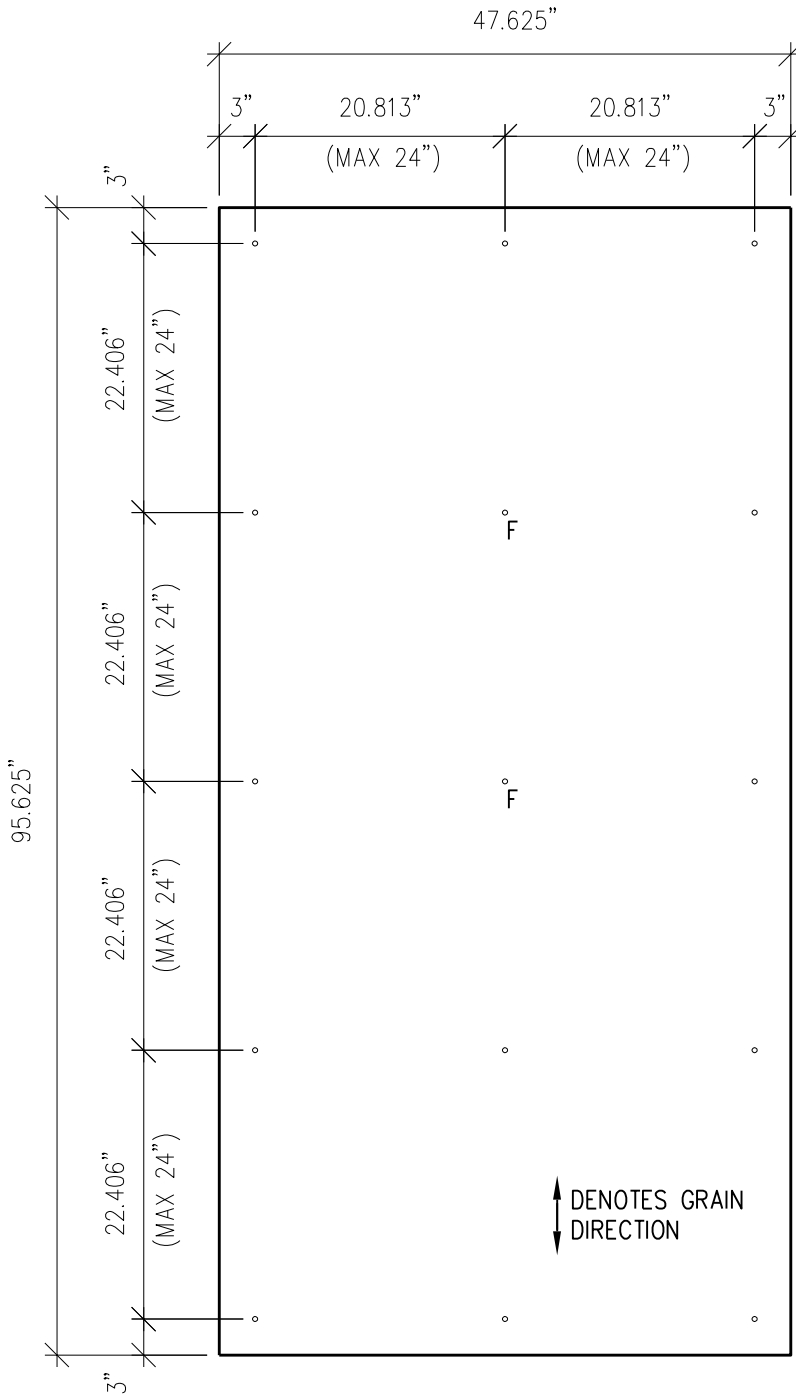
Ref.:

**Panels @
Inside Corner**

Date: 11/19/2021

One-Layer Aluminum Attachment System

XKELEX X-Z19PF GIRT



TYP PANEL EDGE FASTENER

3"=1'-0"

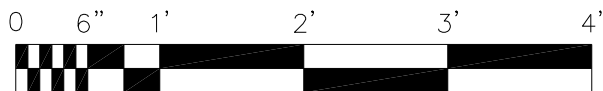
DRILLING KEY:

F = FIXED POINT $21/64"$

UNMARKED HOLE = GLIDING POINT $7/16"$

NOTES:

1. PANEL VERTICAL AND HORIZONTAL JOINT SPACING SHOULD BE $3/8"$ TYPICAL.



SCALE: $3/4" = 1'-0"$



**American Fiber
Cement Corporation**

(303) 972-5107

www.americanfibercement.com

6901 S Pierce St #180, Littleton, CO 80128

Ref.:

Typical
Fastener Layout

Date: 11/19/2021