

TerraSlat Detail Set - Two Layer Horizontal Layout



AMERICAN
FIBER CEMENT



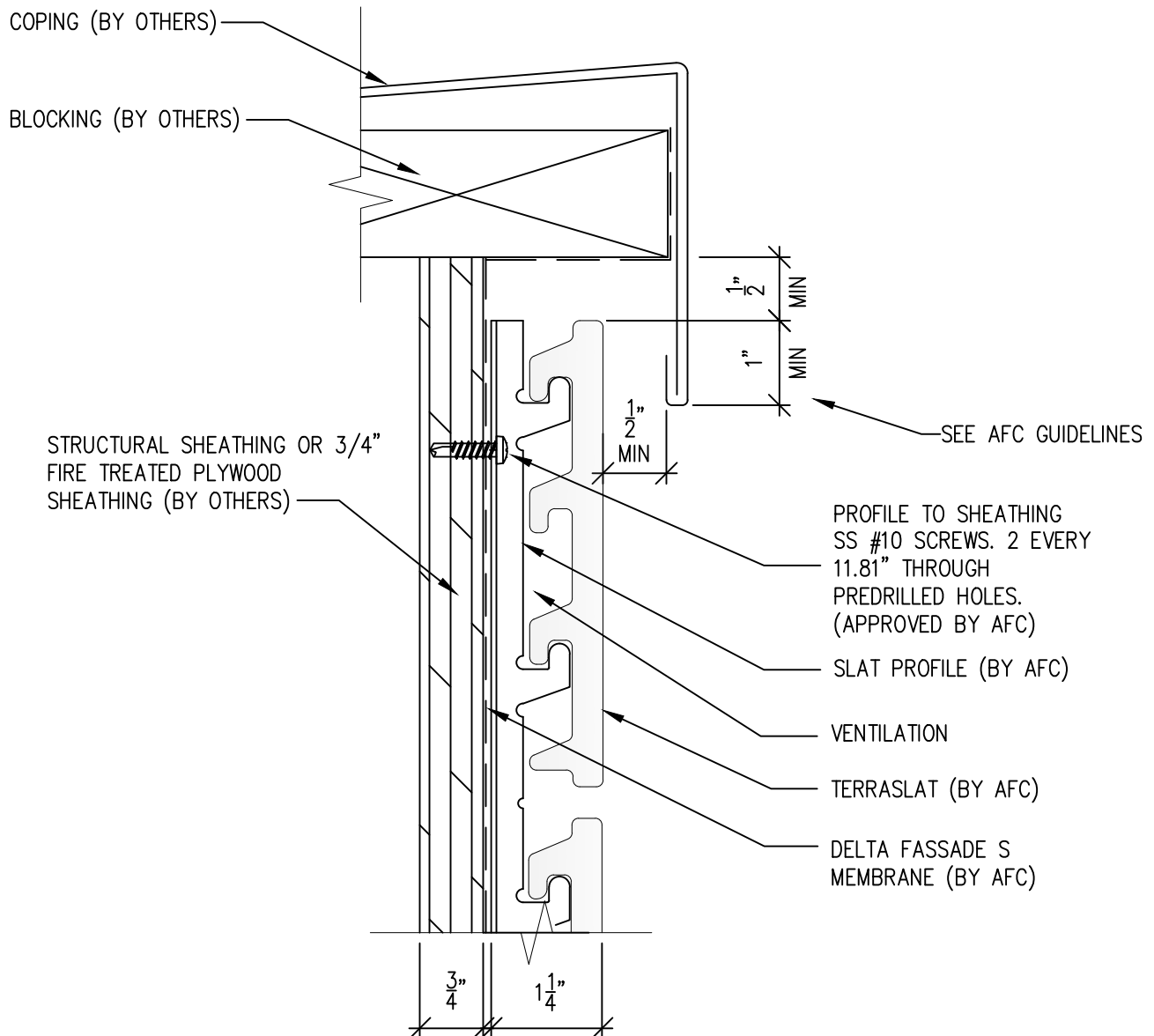
AFC TerraSlat by Tonality®



Typical Details

Page 3:	Top of Slat @ Coping	Page 30:	Horizontal Joint@Continuous Substrate
Page 4:	Top Slat @ Soffit	Page 31:	Horizontal Joint@Break in Substrate
Page 5:	Top of Slat @ AFC TerraSlat Soffit	Page 32:	Bottom of Slat@Wall Base
Page 6:	Horizontal Joint @ Continuous Substrate	Page 33:	Bottom of Slat@Open Termination
Page 7:	Horizontal Joint @ Break In Substrate	Page 34:	Bottom of Slat@Low Roof Flashing
Page 8:	Bottom of Slat @ Wall Base	Page 35:	Bottom of Slat@Soffit (Alternate)
Page 9:	Bottom of Slat @ Open Termination	Page 36:	Bottom of Slat@F.C.P Soffit
Page 10:	Bottom of Slat @ Low Roof Flashing	Page 37:	Bottom of Slat@F.C.P Soffit (Alternate)
Page 11:	Bottom of Slat @ Soffit	Page 38:	Soffit Termination@Adjacent Material
Page 12:	Bottom of Slat @ Soffit (Alternate)	Page 39:	Bottom of Slat@Window Head
Page 13:	Bottom of Slat @ Soffit	Page 40:	Top of Slat@Window Sill
Page 14:	Bottom of Slat @ F.C.P Soffit	Page 41:	Slat Edge@Window Jam
Page 15:	Bottom of Slat @F.C.P. Soffit (Alternate)	Page 42:	Vertical Slat Joint
Page 16:	Soffit Termination @ Adjacent Material	Page 43:	Slat Edge@Window Jamb Alternate
Page 17:	Bottom of Slat @ Window Head	Page 44:	Slat Edge@Butt Joint
Page 18:	Bottom of Slat @ Window Head (Alternate)	Page 45:	Slat@Outside Corner
Page 19:	Top of Slat @ Window Sill	Page 46:	Slats@Outside Corner Alternate
Page 20:	Slat Edge @ Window Jamb	Page 47:	Slat@Inside Corner
Page 21:	Vertical Slat Joint	Page 48:	Cladiator Slotted Z
Page 22:	Slat Edge @ Window Jamb (Alternate)		
Page 23:	Slat Edge @ Butt Joint		
Page 24:	Slats @ Outside Corner		
Page 25:	Slat @ Outside Corner		
Page 26:	Slat @ Inside Corner		
Page 27:	Top of Slat@Coping		
Page 28:	Top of Slat@Soffit		
Page 29:	Top of Slat@AFC TerraSlat Soffit		

TerraSlat Detail Set-Single Layer Horizontal Layout



SCALE: 6"=1'-0"

NOTES:

1. PANEL VERTICAL AND HORIZONTAL JOINT SPACING SHOULD BE 3/8" TYPICAL.

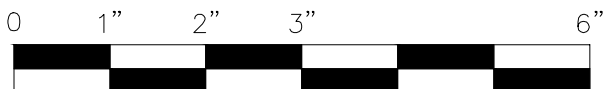
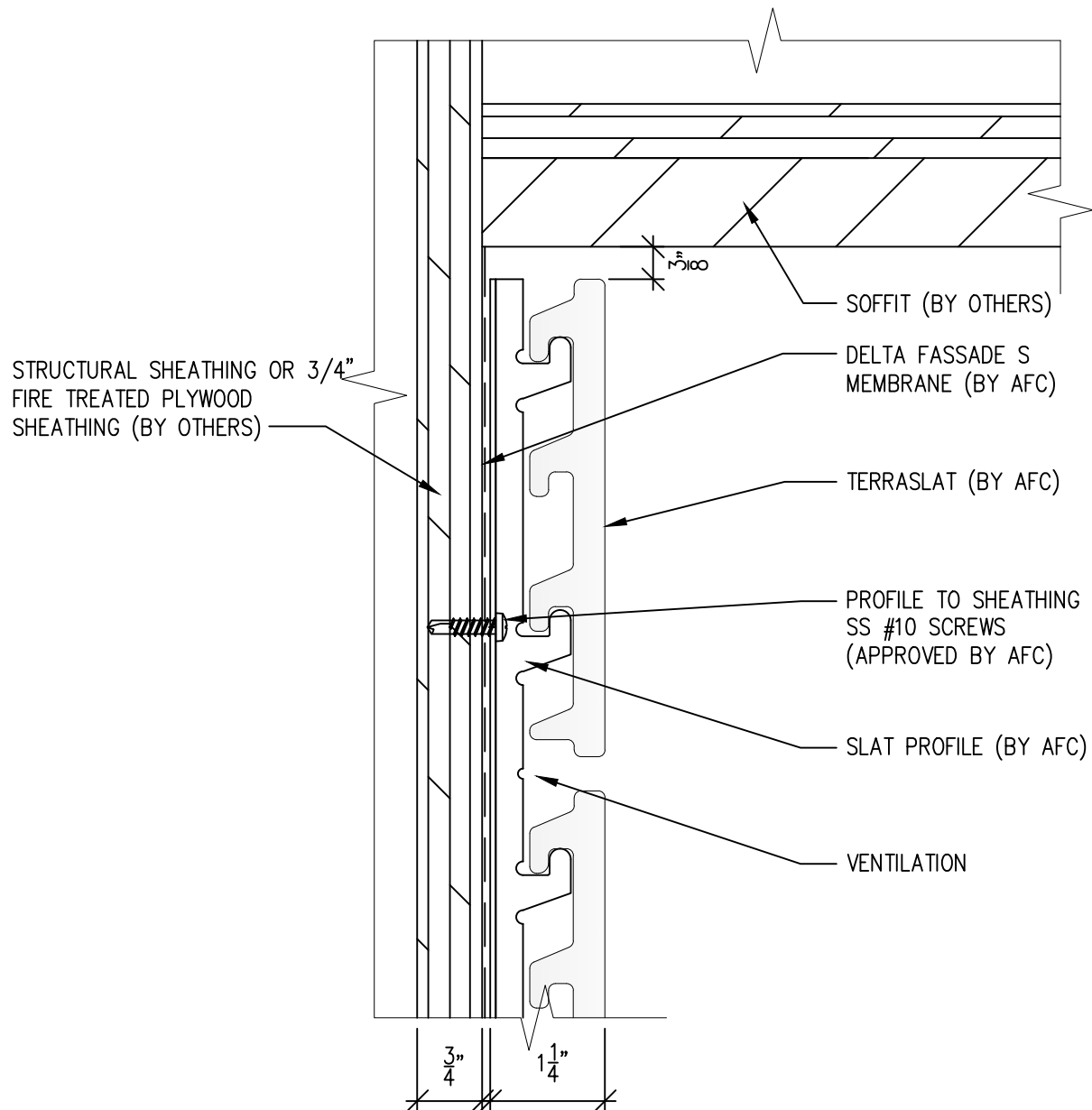


(303) 972-5107
6901 S Pierce St #180
Littleton, CO 80128
www.americanfibercement.com

Ref.:
Top of Slat @ Coping

Date: 04/2024

TerraSlat Detail Set-Single Layer Horizontal Layout



SCALE: 6"=1'-0"

NOTES:

1. PANEL VERTICAL AND HORIZONTAL JOINT SPACING SHOULD BE 3/8" TYPICAL.

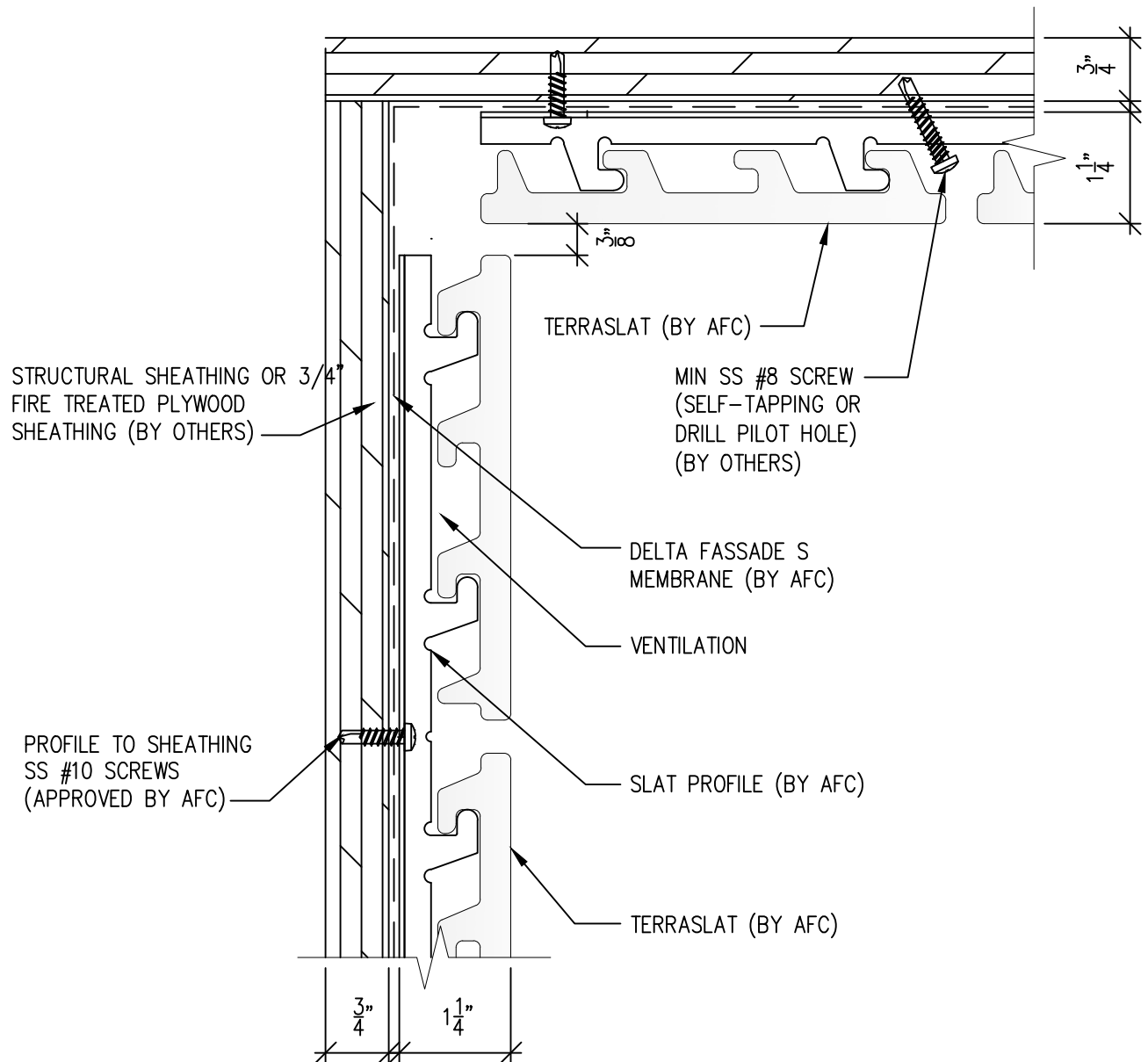


(303) 972-5107
6901 S Pierce St #180
Littleton, CO 80128
www.americanfibercement.com

Ref.:
Top of Slat @
Soffit

Date: 04/2024

TerraSlat Detail Set-Single Layer Horizontal Layout



SCALE: 6"=1'-0"

NOTES:

1. PANEL VERTICAL AND HORIZONTAL JOINT SPACING SHOULD BE 3/8" TYPICAL.

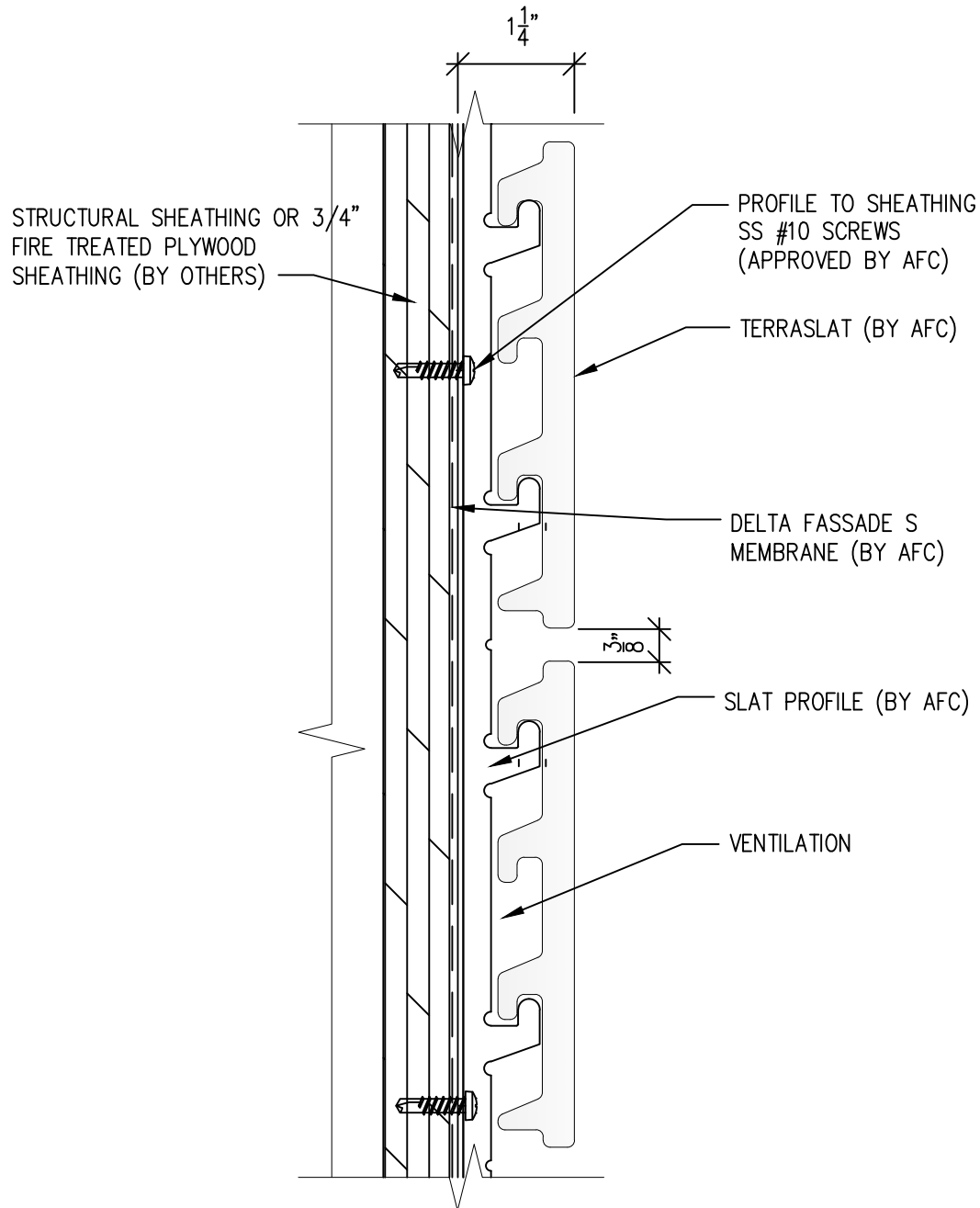


(303) 972-5107
6901 S Pierce St #180
Littleton, CO 80128
www.americanfibercement.com

Ref.:
Top of Slat @
AFC TerraSlat Soffit

Date: 04/2024

TerraSlat Detail Set-Single Layer Horizontal Layout



SCALE: 6"=1'-0"

NOTES:

1. PANEL VERTICAL AND HORIZONTAL JOINT SPACING SHOULD BE 3/8" TYPICAL.

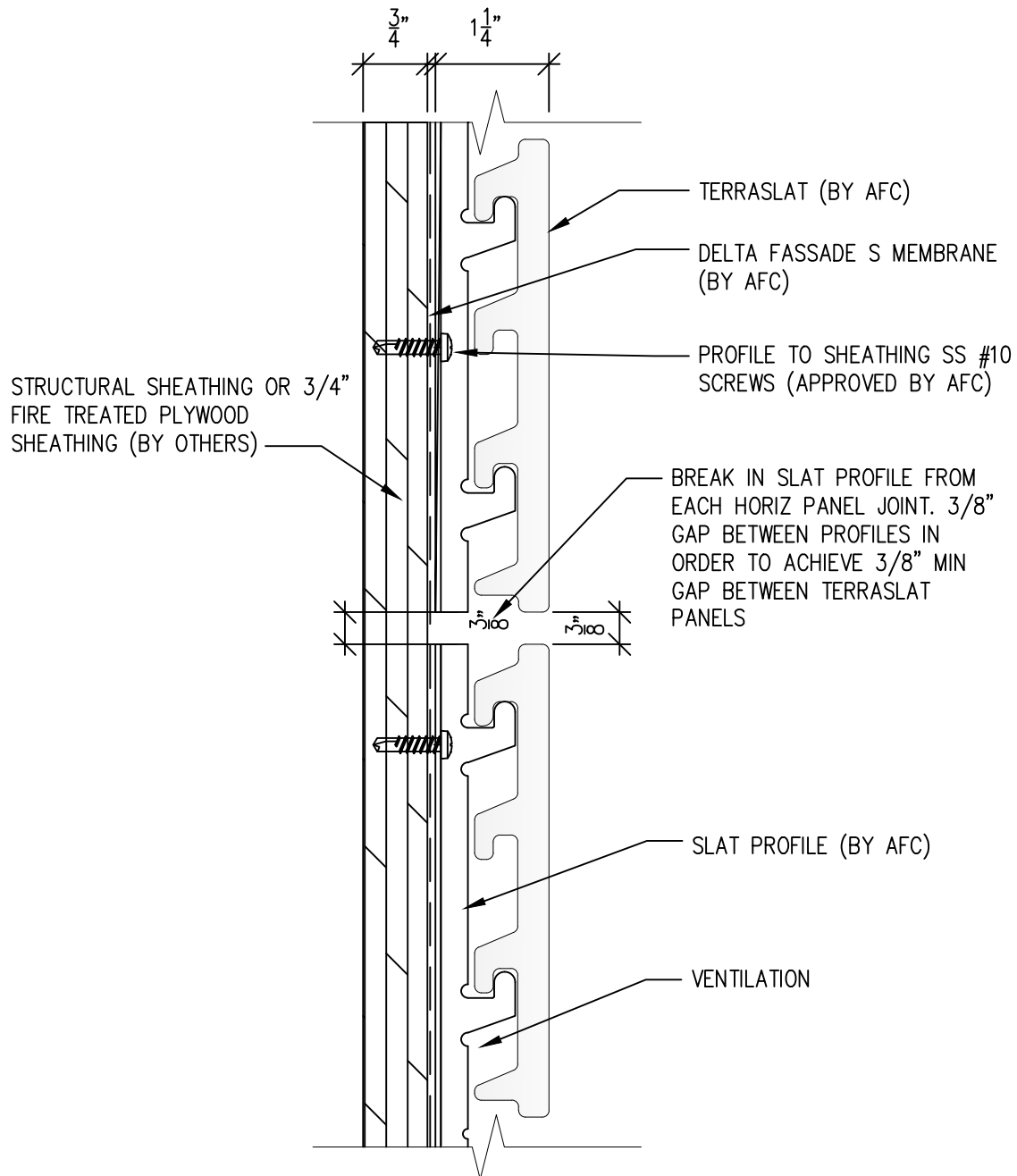


(303) 972-5107
6901 S Pierce St #180
Littleton, CO 80128
www.americanfibercement.com

Ref.: Horizontal Joint @
Continuous Substrate

Date: 04/2024

TerraSlat Detail Set-Single Layer Horizontal Layout



SCALE: 6"=1'-0"

NOTES:

1. PANEL VERTICAL AND HORIZONTAL JOINT SPACING SHOULD BE 3/8" TYPICAL.



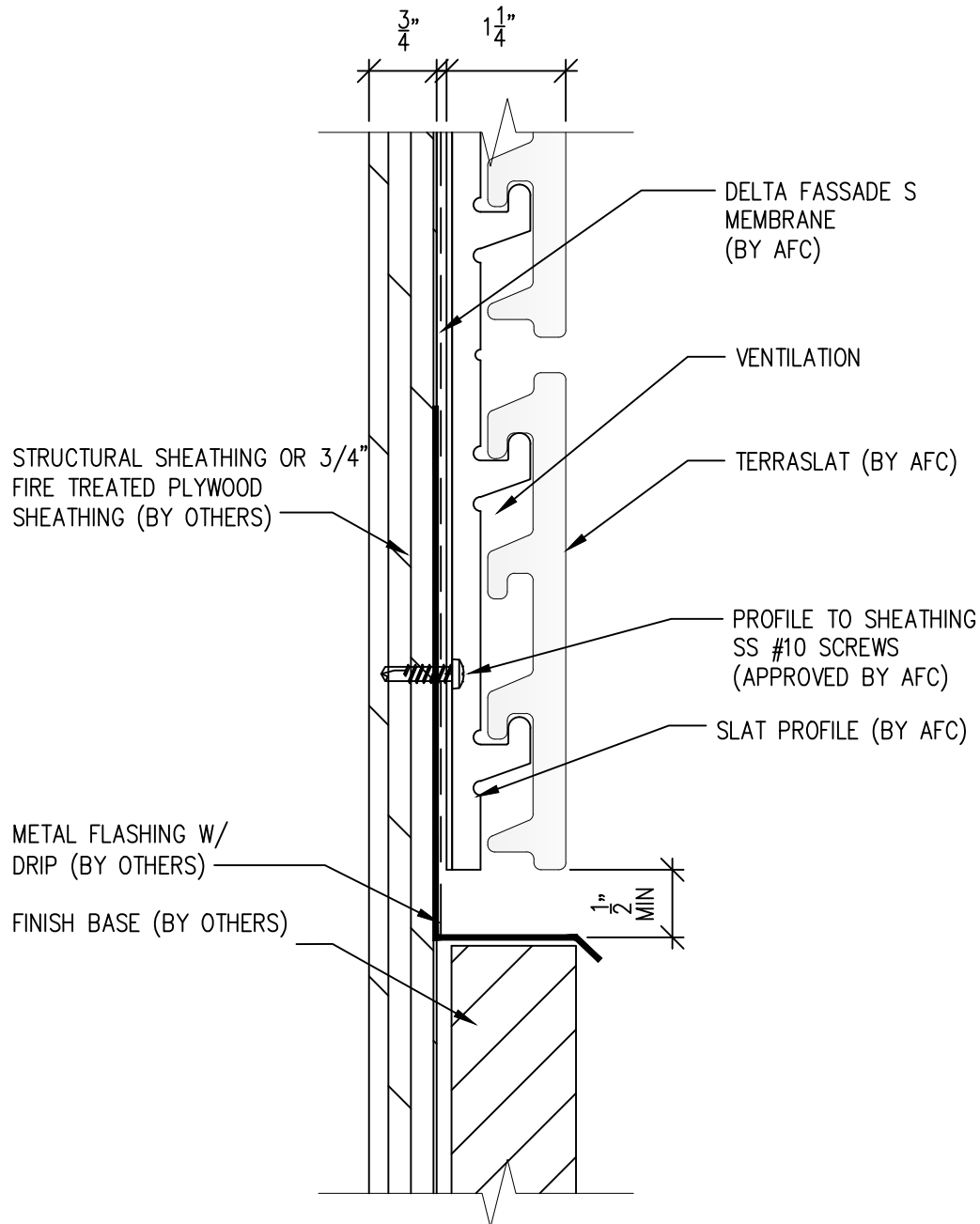
(303) 972-5107
6901 S Pierce St #180
Littleton, CO 80128

www.americanfibercement.com

Ref.:
Horizontal Joint @
Break in Substrate

Date: 04/2024

TerraSlat Detail Set-Single Layer Horizontal Layout



SCALE: 6"=1'-0"

NOTES:

1. PANEL VERTICAL AND HORIZONTAL JOINT SPACING SHOULD BE 3/8" TYPICAL.

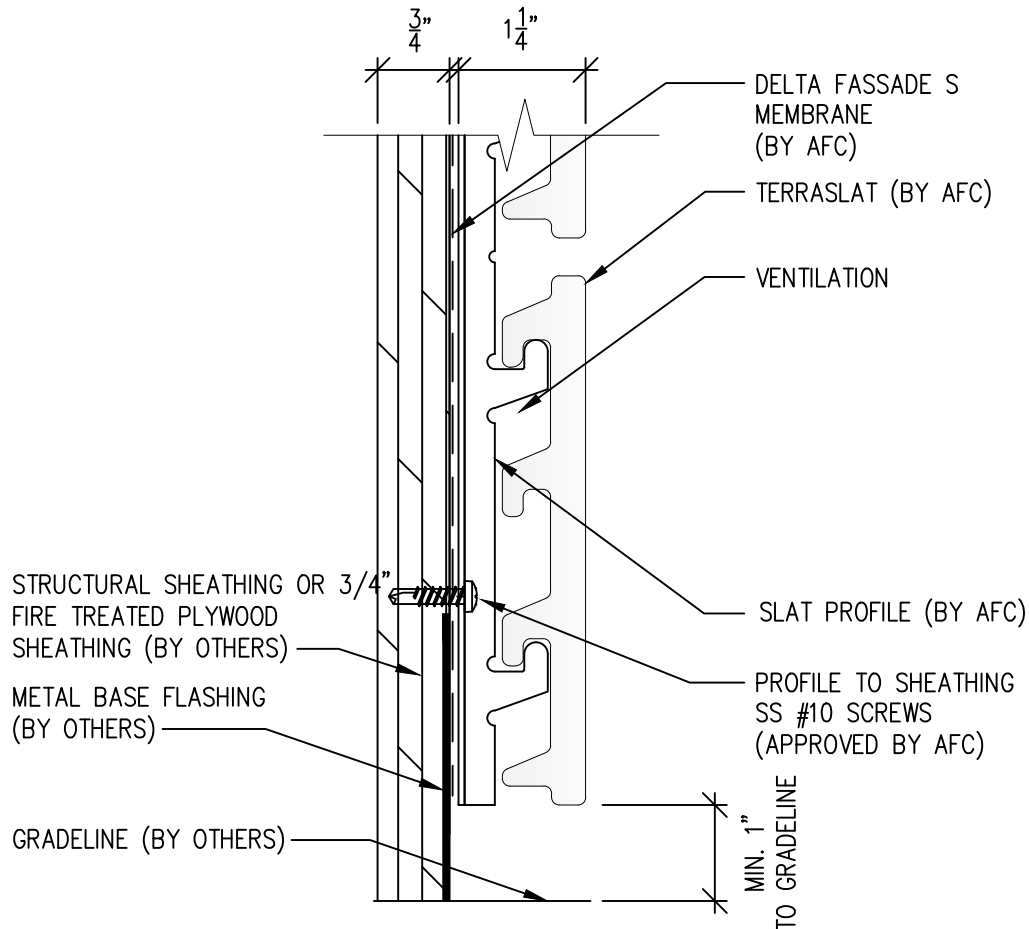


(303) 972-5107
6901 S Pierce St #180
Littleton, CO 80128
www.americanfibercement.com

Ref.:
Bottom of Slat @
Wall Base

Date: 04/2024

TerraSlat Detail Set-Single Layer Horizontal Layout



NOTE:
HOLD BASE OF TERRASLAT
PANEL 6"-12" OFF GRADE
BASED ON EXPECTED SNOW
BUILDUP



SCALE: 6"=1'-0"

NOTES:

1. PANEL VERTICAL AND HORIZONTAL JOINT SPACING SHOULD BE 3/8" TYPICAL.

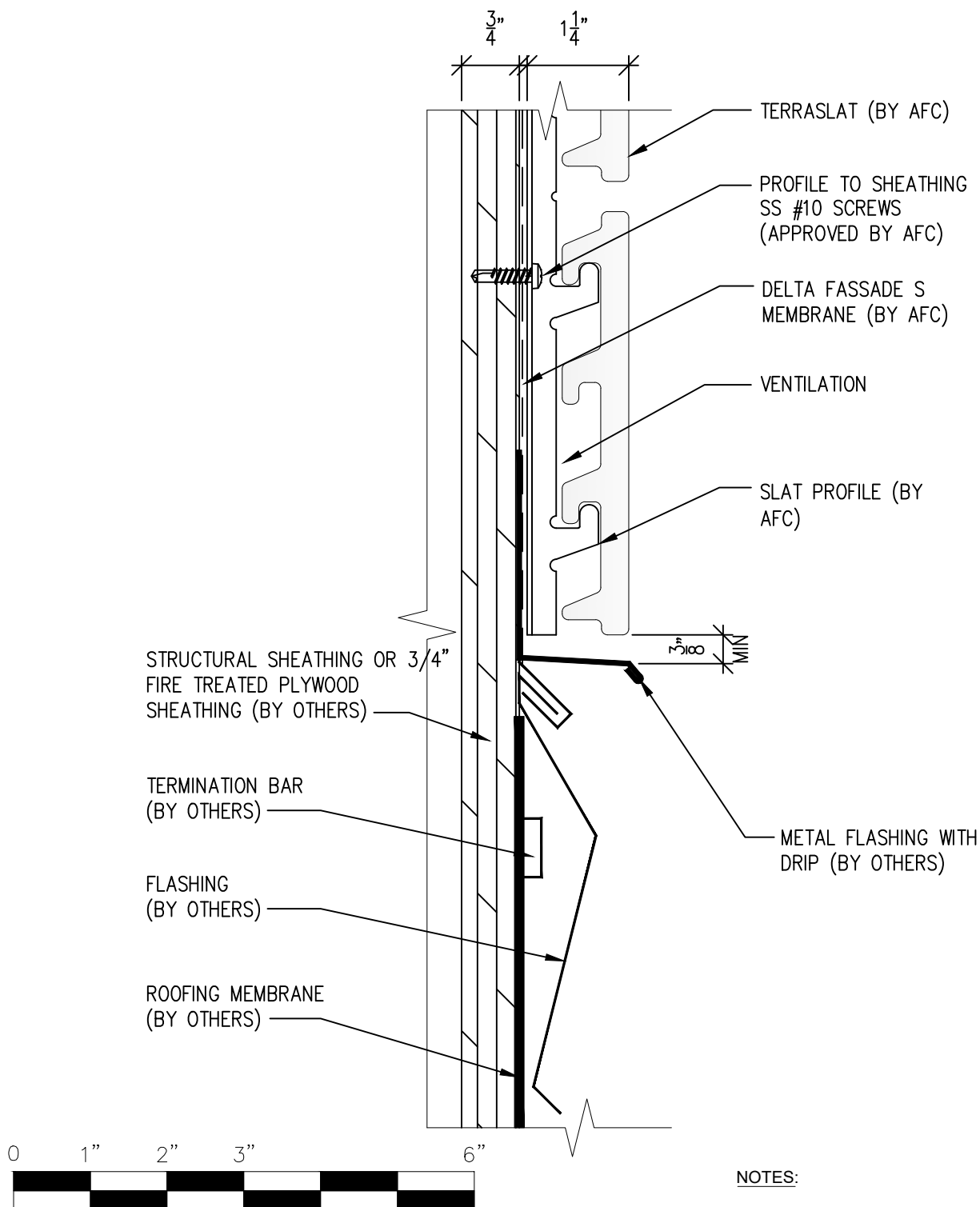


(303) 972-5107
6901 S Pierce St #180
Littleton, CO 80128
www.americanfibercement.com

Ref.:
Bottom of Slat @
Open Termination

Date: 04/2024

TerraSlat Detail Set-Single Layer Horizontal Layout

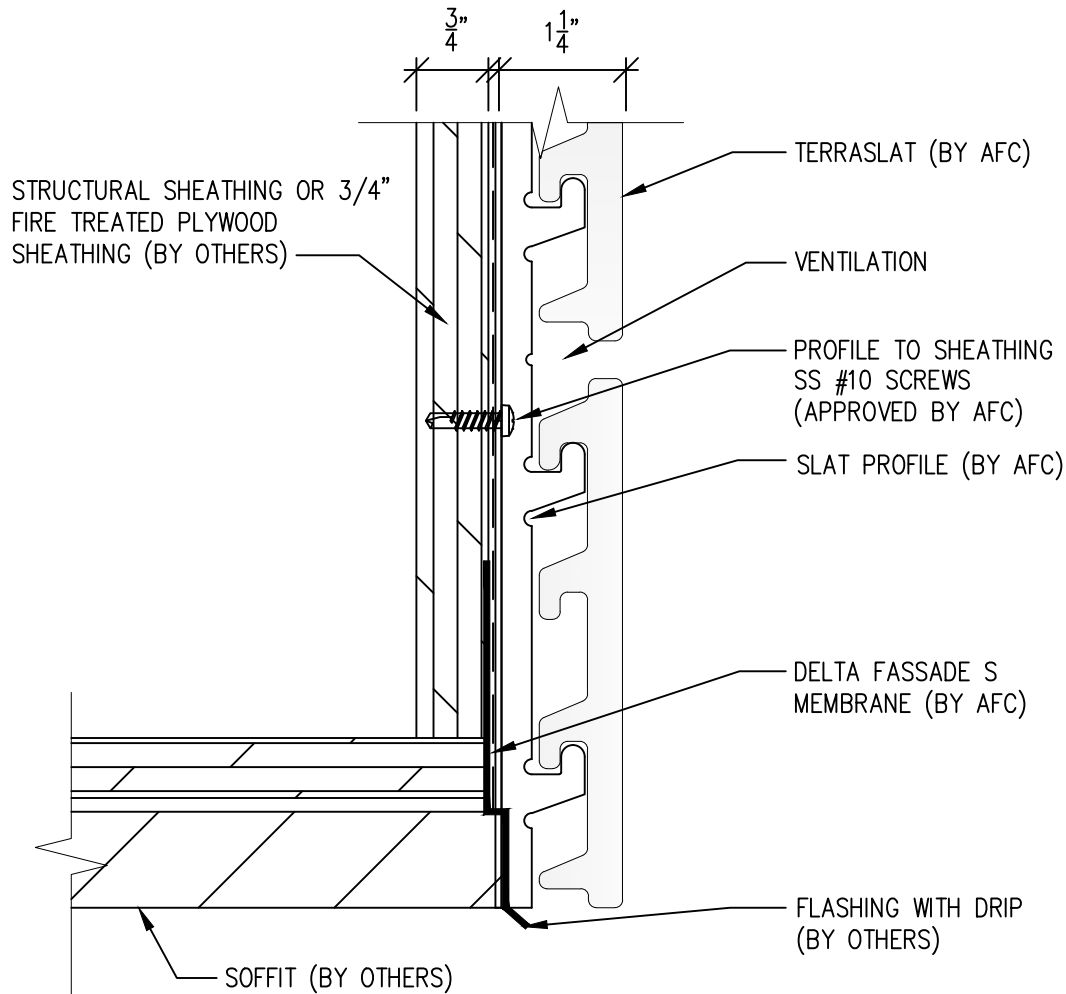


(303) 972-5107
6901 S Pierce St #180
Littleton, CO 80128
www.americanfibercement.com

Ref.:
Bottom of Slat @
Low Roof Flashing

Date: 04/2024

TerraSlat Detail Set-Single Layer Horizontal Layout



SCALE: 6"=1'-0"

NOTES:

1. PANEL VERTICAL AND HORIZONTAL JOINT SPACING SHOULD BE 3/8" TYPICAL.

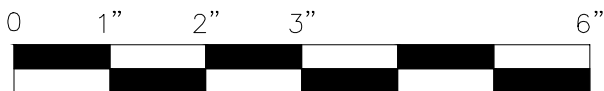
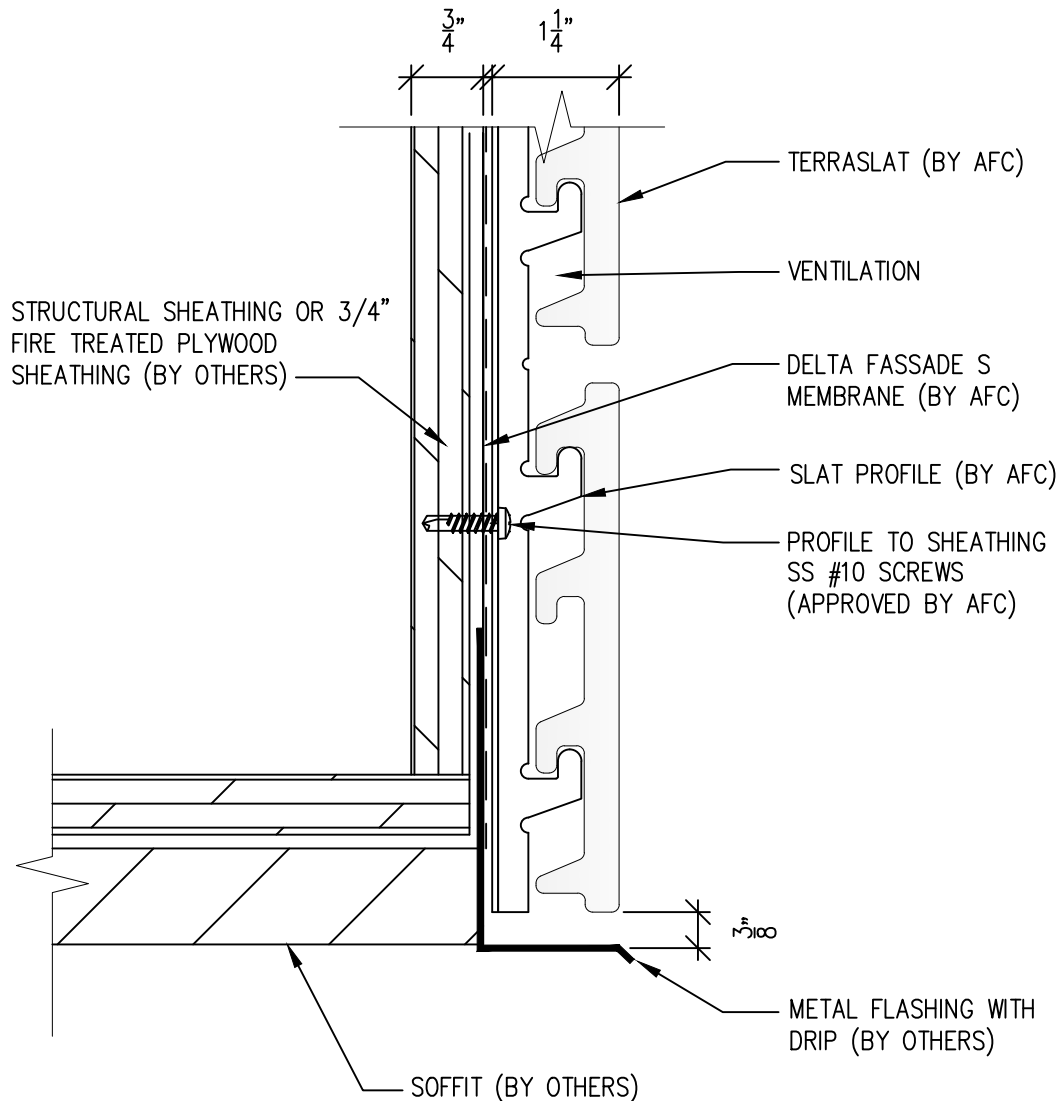


(303) 972-5107
6901 S Pierce St #180
Littleton, CO 80128
www.americanfibercement.com

Ref.:
Bottom of Slat @
Soffit

Date: 04/2024

TerraSlat Detail Set-Single Layer Horizontal Layout



SCALE: 6"=1'-0"

NOTES:

1. PANEL VERTICAL AND HORIZONTAL JOINT SPACING SHOULD BE 3/8" TYPICAL.

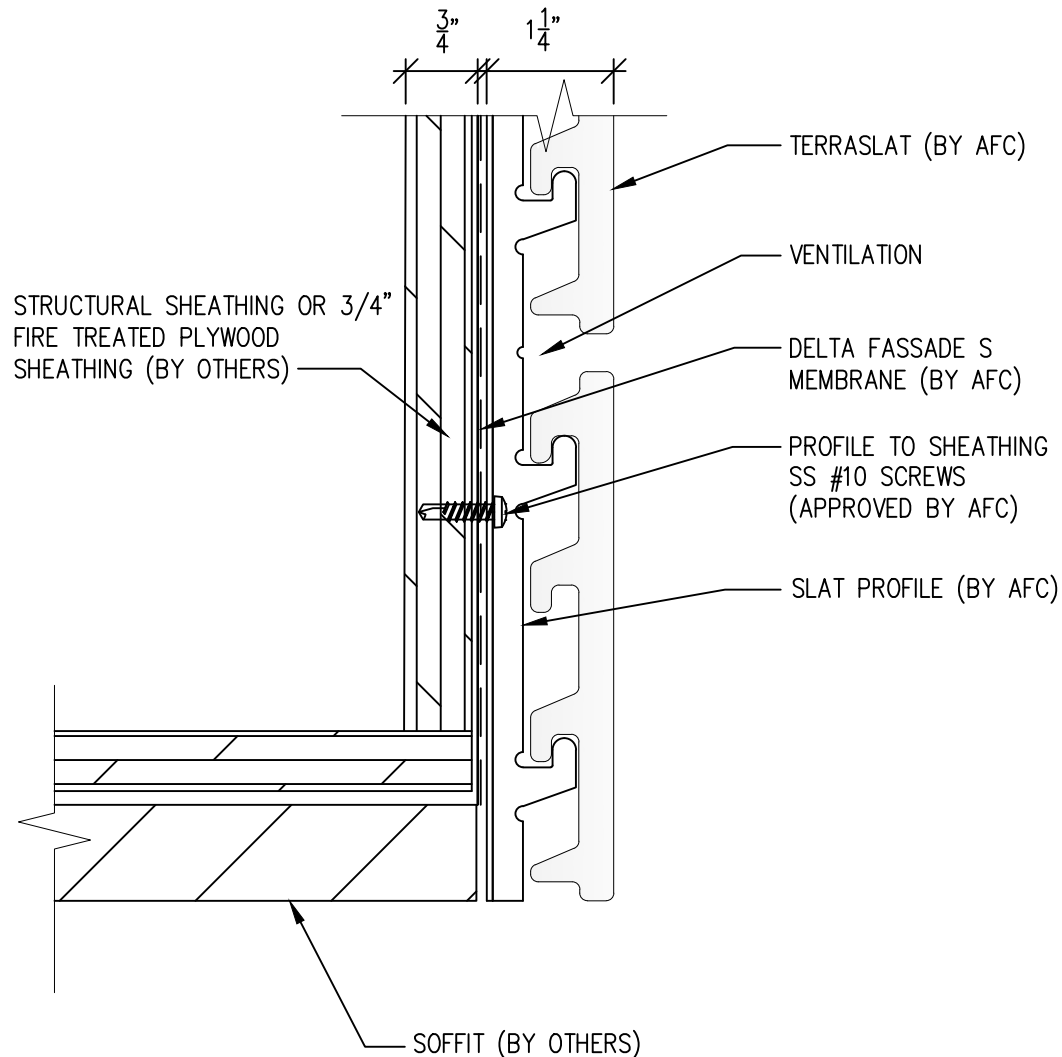


(303) 972-5107
6901 S Pierce St #180
Littleton, CO 80128
www.americanfibercement.com

Ref.:
Bottom of Slat @
Soffit(Alternate)

Date: 04/2024

TerraSlat Detail Set-Single Layer Horizontal Layout



SCALE: 6"=1'-0"

NOTES:

1. PANEL VERTICAL AND HORIZONTAL JOINT SPACING SHOULD BE 3/8" TYPICAL.

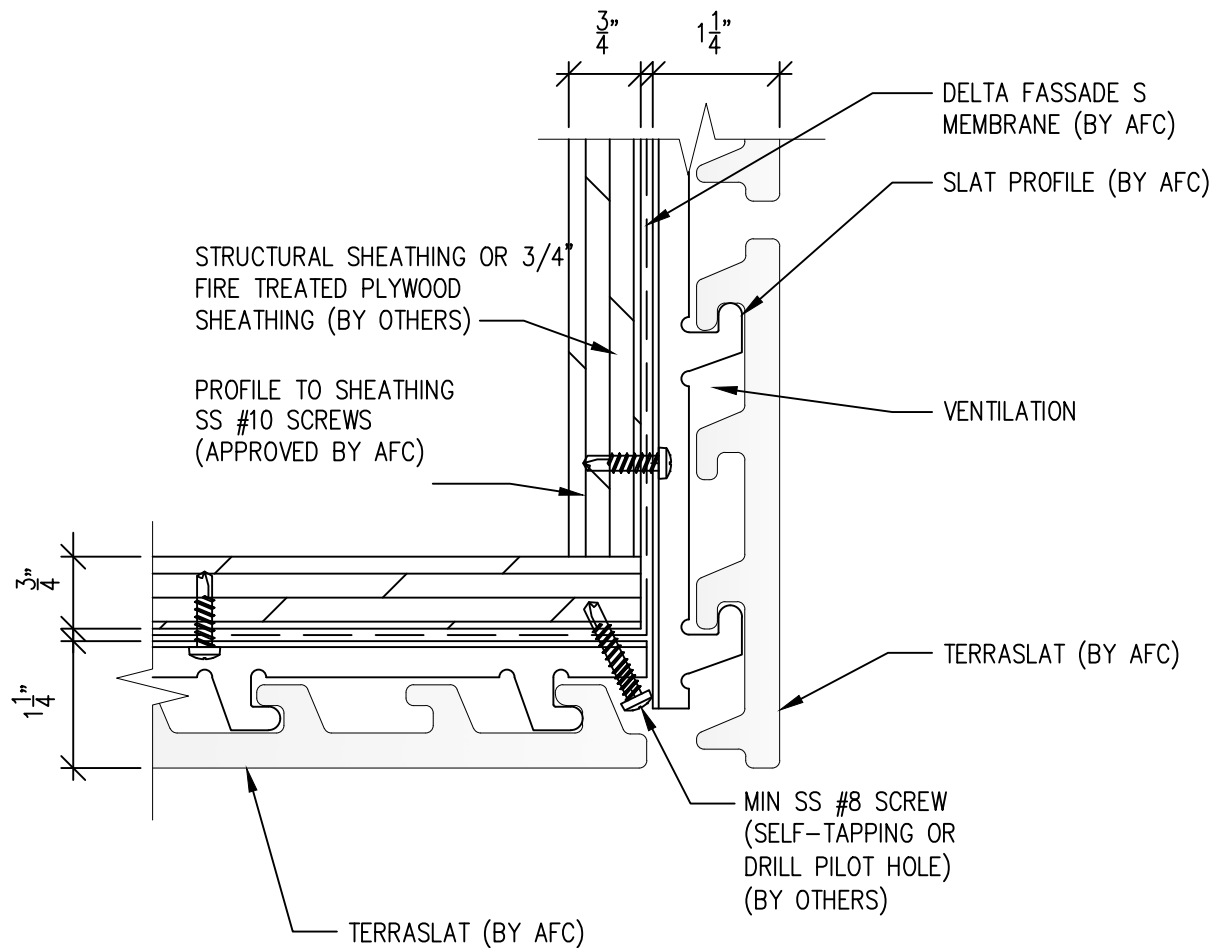


(303) 972-5107
6901 S Pierce St #180
Littleton, CO 80128
www.americanfibercement.com

Ref.:
Bottom of Slat @
Soffit

Date: 04/2024

TerraSlat Detail Set-Single Layer Horizontal Layout



SCALE: 6"=1'-0"

NOTES:

1. PANEL VERTICAL AND HORIZONTAL JOINT SPACING SHOULD BE 3/8" TYPICAL.

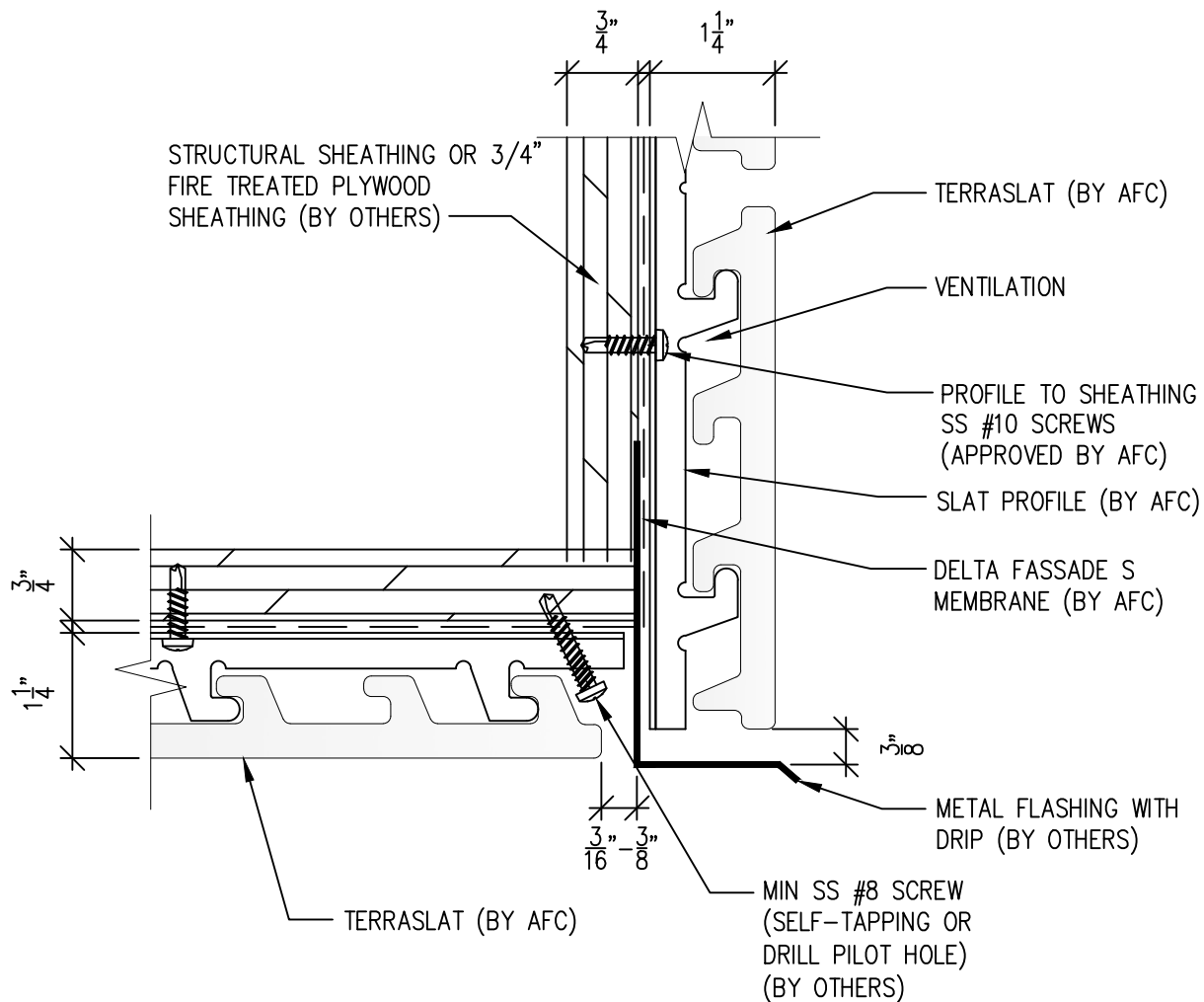


(303) 972-5107
6901 S Pierce St #180
Littleton, CO 80128
www.americanfibercement.com

Ref.:
Bottom of Slat @
F.C.P Soffit

Date: 04/2024

TerraSlat Detail Set-Single Layer Horizontal Layout



SCALE: 6"=1'-0"

NOTES:

1. PANEL VERTICAL AND HORIZONTAL JOINT SPACING SHOULD BE 3/8" TYPICAL.



(303) 972-5107
6901 S Pierce St #180
Littleton, CO 80128

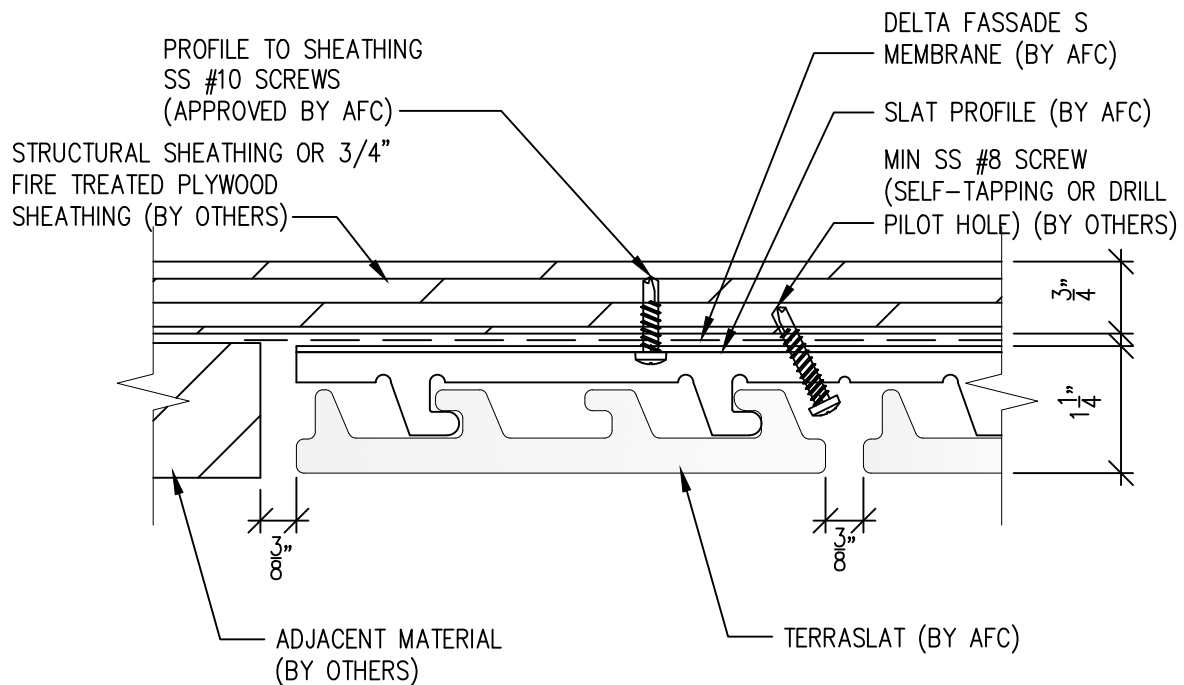
www.americanfibercement.com

Ref.:

Bottom of Slat @
F.C.P Soffit(Alternate)

Date: 04/2024

TerraSlat Detail Set-Single Layer Horizontal Layout



SCALE: 6"=1'-0"

NOTES:

1. PANEL VERTICAL AND HORIZONTAL JOINT SPACING SHOULD BE 3/8" TYPICAL.



(303) 972-5107
6901 S Pierce St #180
Littleton, CO 80128

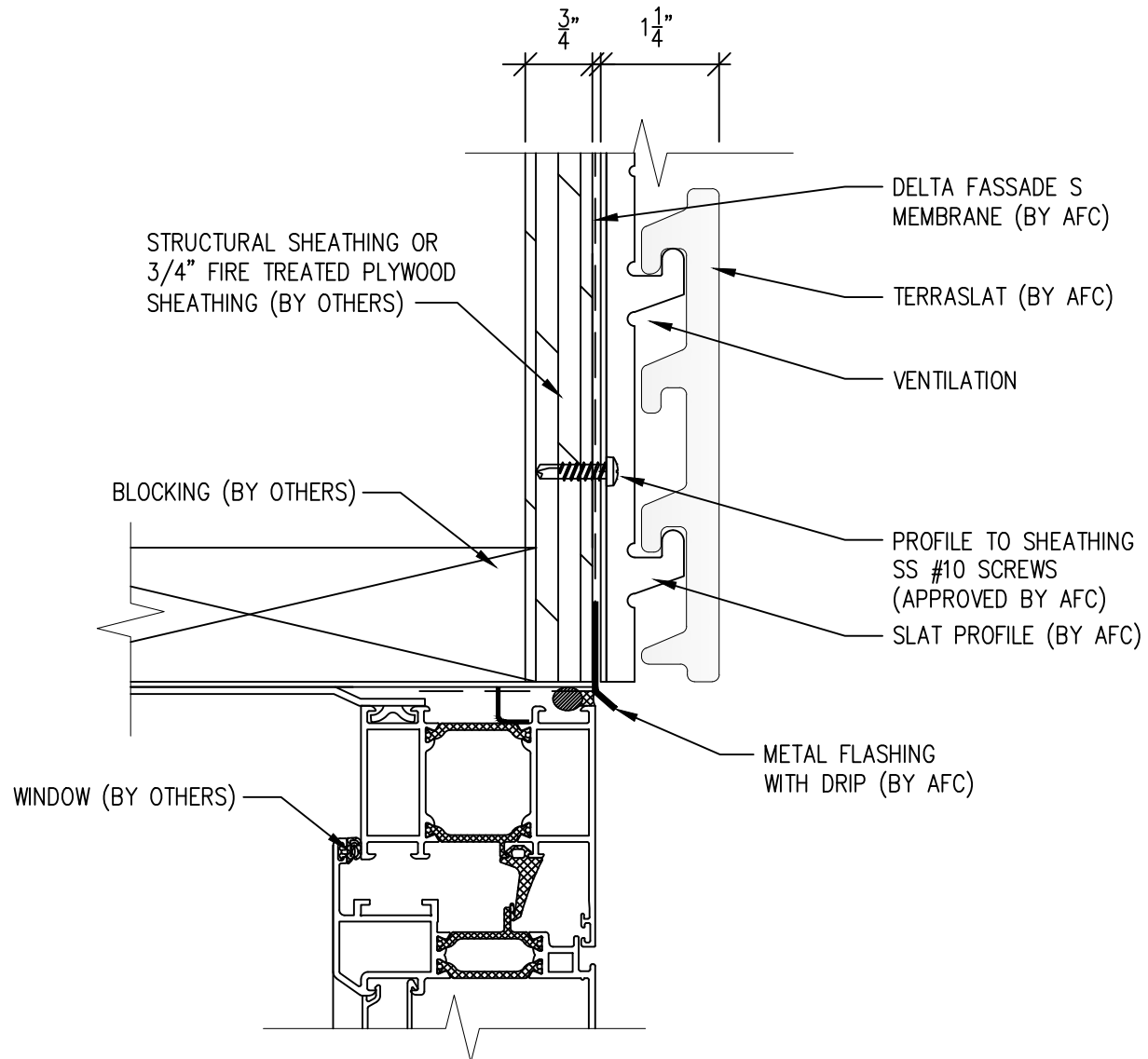
www.americanfibercement.com

Ref.:

Soffit Termination @
Adjacent Material

Date: 04/2024

TerraSlat Detail Set-Single Layer Horizontal Layout



SCALE: 6"=1'-0"

NOTES:

1. PANEL VERTICAL AND HORIZONTAL JOINT SPACING SHOULD BE 3/8" TYPICAL.

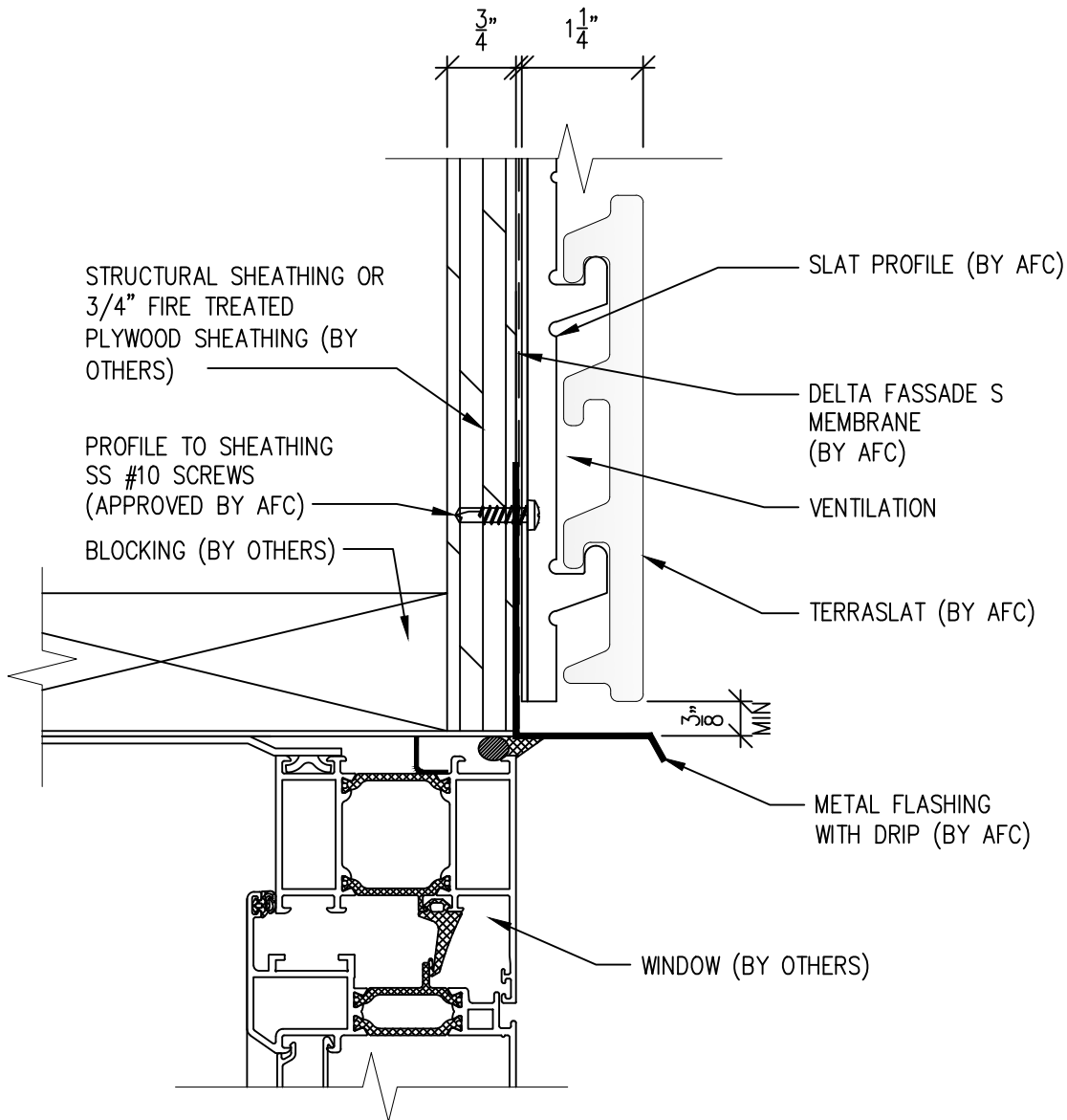


(303) 972-5107
6901 S Pierce St #180
Littleton, CO 80128
www.americanfibercement.com

Ref.:
Bottom of Slat @
Window Head

Date: 04/2024

TerraSlat Detail Set-Single Layer Horizontal Layout



SCALE: 6"=1'-0"

NOTES:

1. PANEL VERTICAL AND HORIZONTAL JOINT SPACING SHOULD BE 3/8" TYPICAL.



(303) 972-5107
6901 S Pierce St #180
Littleton, CO 80128

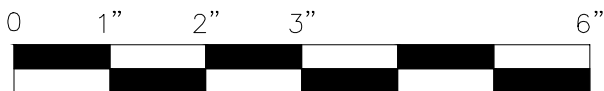
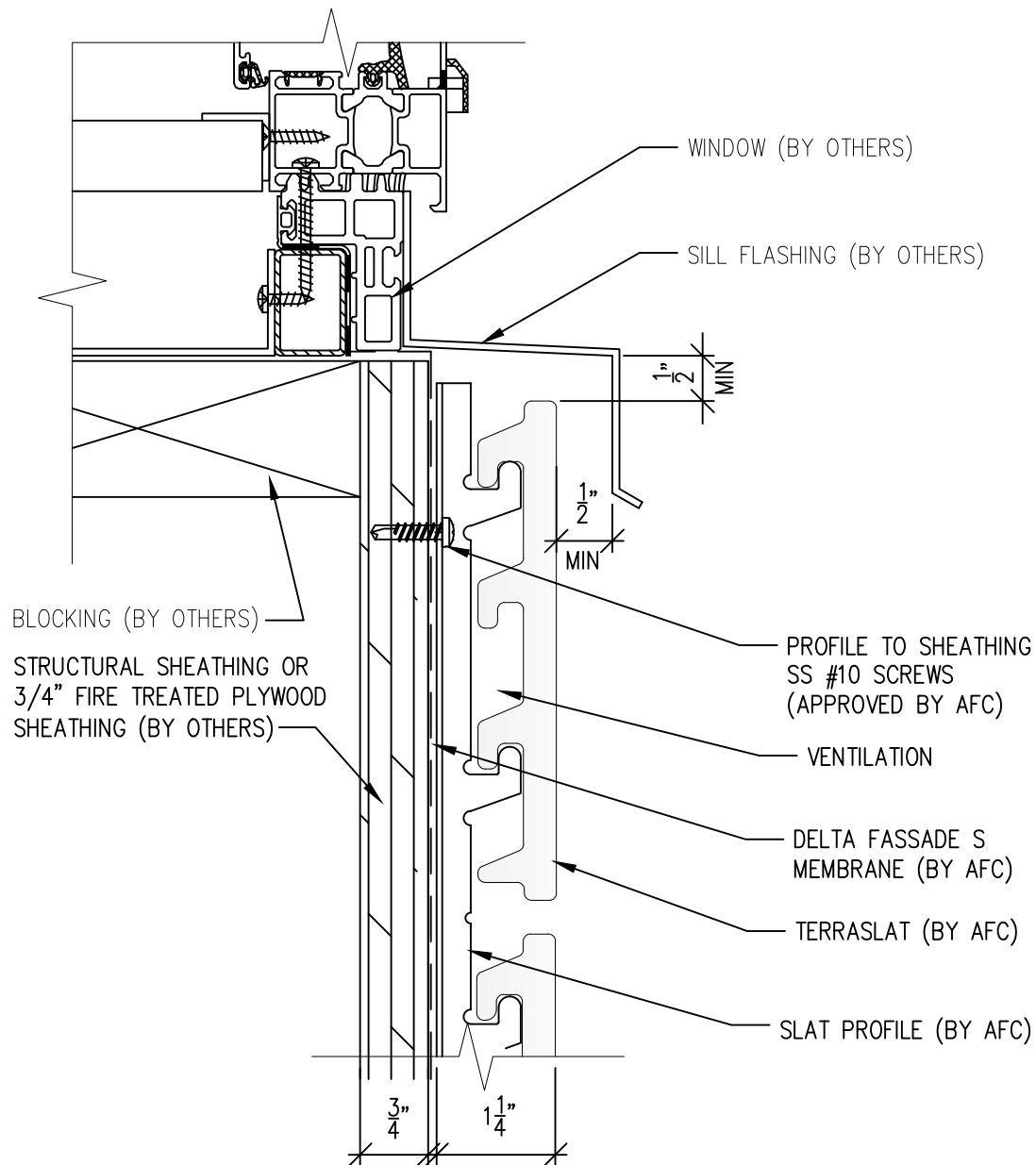
www.americanfibercement.com

Ref.:

Bottom of Slat @
Window Head (Alternate)

Date: 04/2024

TerraSlat Detail Set-Single Layer Horizontal Layout



SCALE: 6"=1'-0"

NOTES:

1. PANEL VERTICAL AND HORIZONTAL JOINT SPACING SHOULD BE 3/8" TYPICAL.



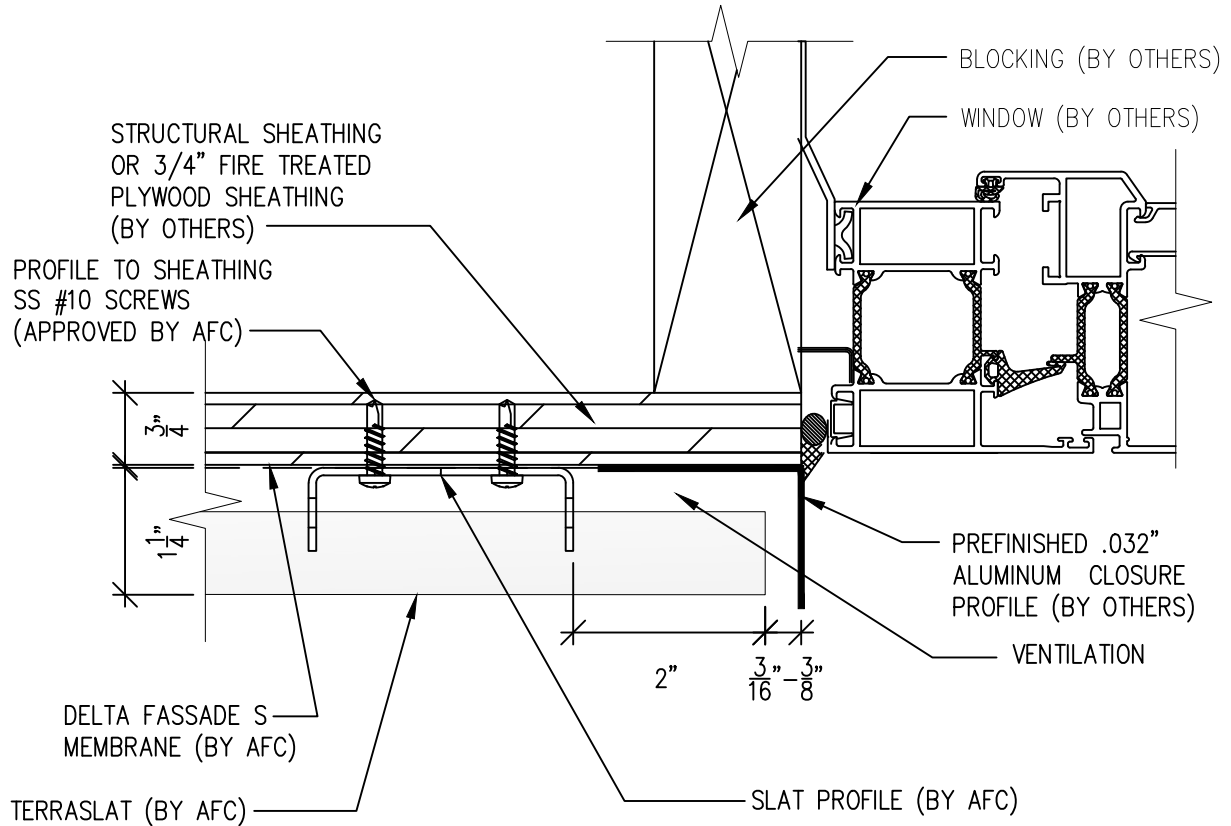
(303) 972-5107
6901 S Pierce St #180
Littleton, CO 80128

www.americanfibercement.com

Ref.:
Top of Slat @
Window Sill

Date: 04/2024

TerraSlat Detail Set-Single Layer Horizontal Layout



SCALE: 6"=1'-0"

NOTES:

1. PANEL VERTICAL AND HORIZONTAL JOINT SPACING SHOULD BE 3/8" TYPICAL.

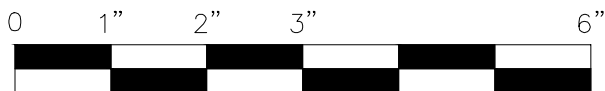
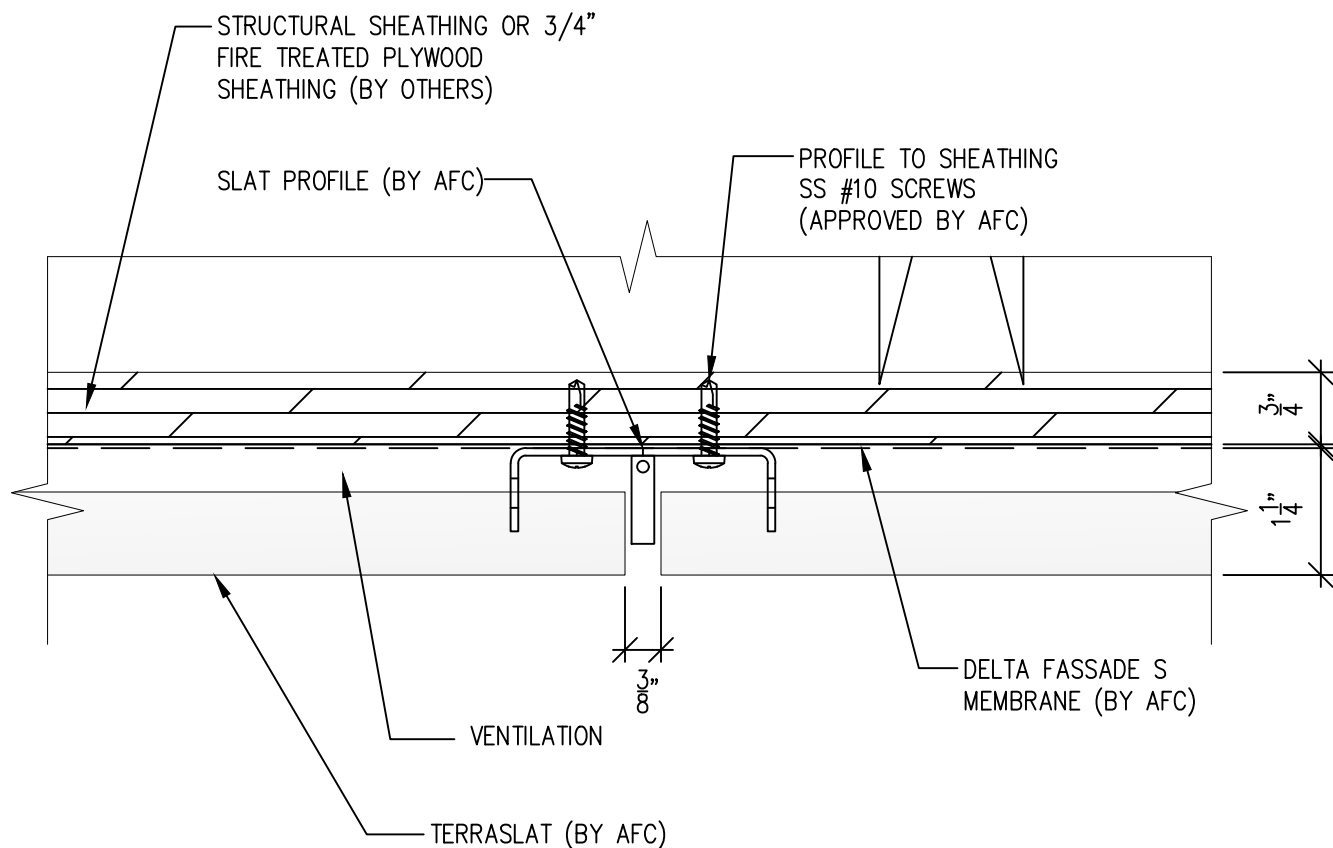


(303) 972-5107
6901 S Pierce St #180
Littleton, CO 80128
www.americanfibercement.com

Ref.:
Slat Edge @
Window Jamb

Date: 04/2024

TerraSlat Detail Set-Single Layer Horizontal Layout



SCALE: 6"=1'-0"

NOTES:

1. PANEL VERTICAL AND HORIZONTAL JOINT SPACING SHOULD BE 3/8" TYPICAL.

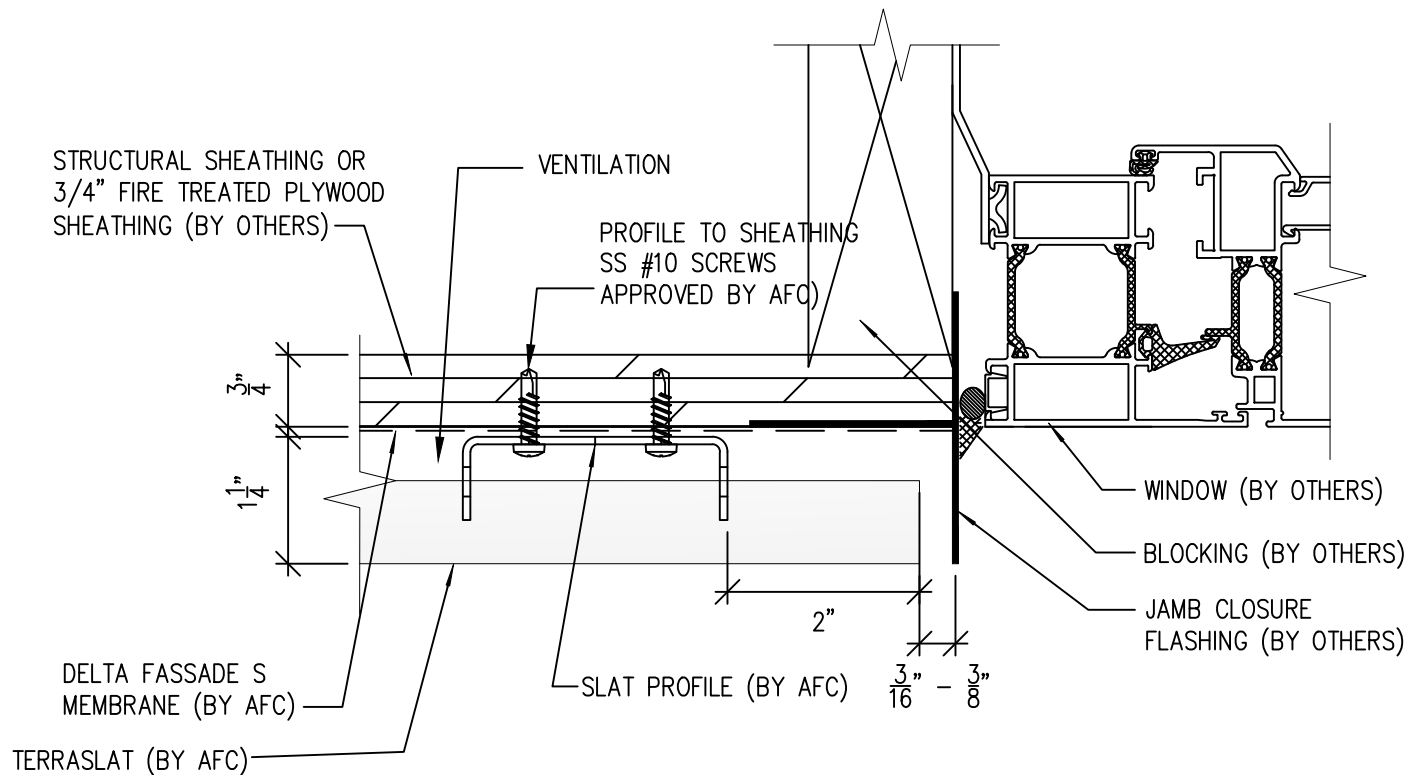


(303) 972-5107
6901 S Pierce St #180
Littleton, CO 80128
www.americanfibercement.com

Ref.:
Vertical Slat Joint

Date: 04/2024

TerraSlat Detail Set-Single Layer Horizontal Layout



SCALE: 6"=1'-0"

NOTES:

1. PANEL VERTICAL AND HORIZONTAL JOINT SPACING SHOULD BE 3/8" TYPICAL.



(303) 972-5107
6901 S Pierce St #180
Littleton, CO 80128

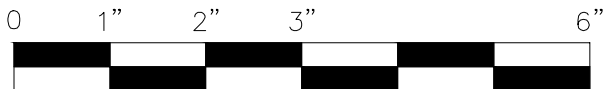
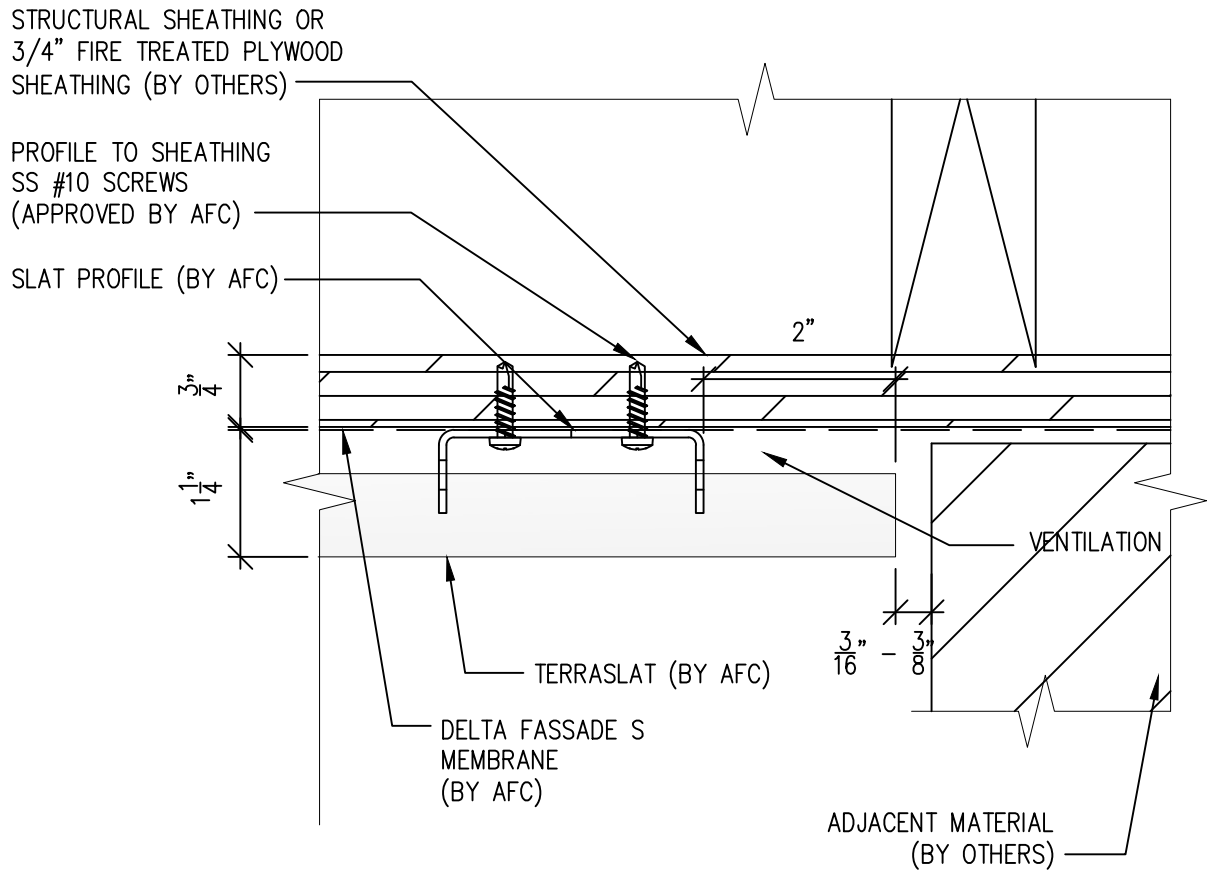
www.americanfibercement.com

Ref.:

Slat Edge @ Window Jamb
Alternate

Date: 04/2024

TerraSlat Detail Set-Single Layer Horizontal Layout



SCALE: 6"=1'-0"

NOTES:

1. PANEL VERTICAL AND HORIZONTAL JOINT SPACING SHOULD BE 3/8" TYPICAL.

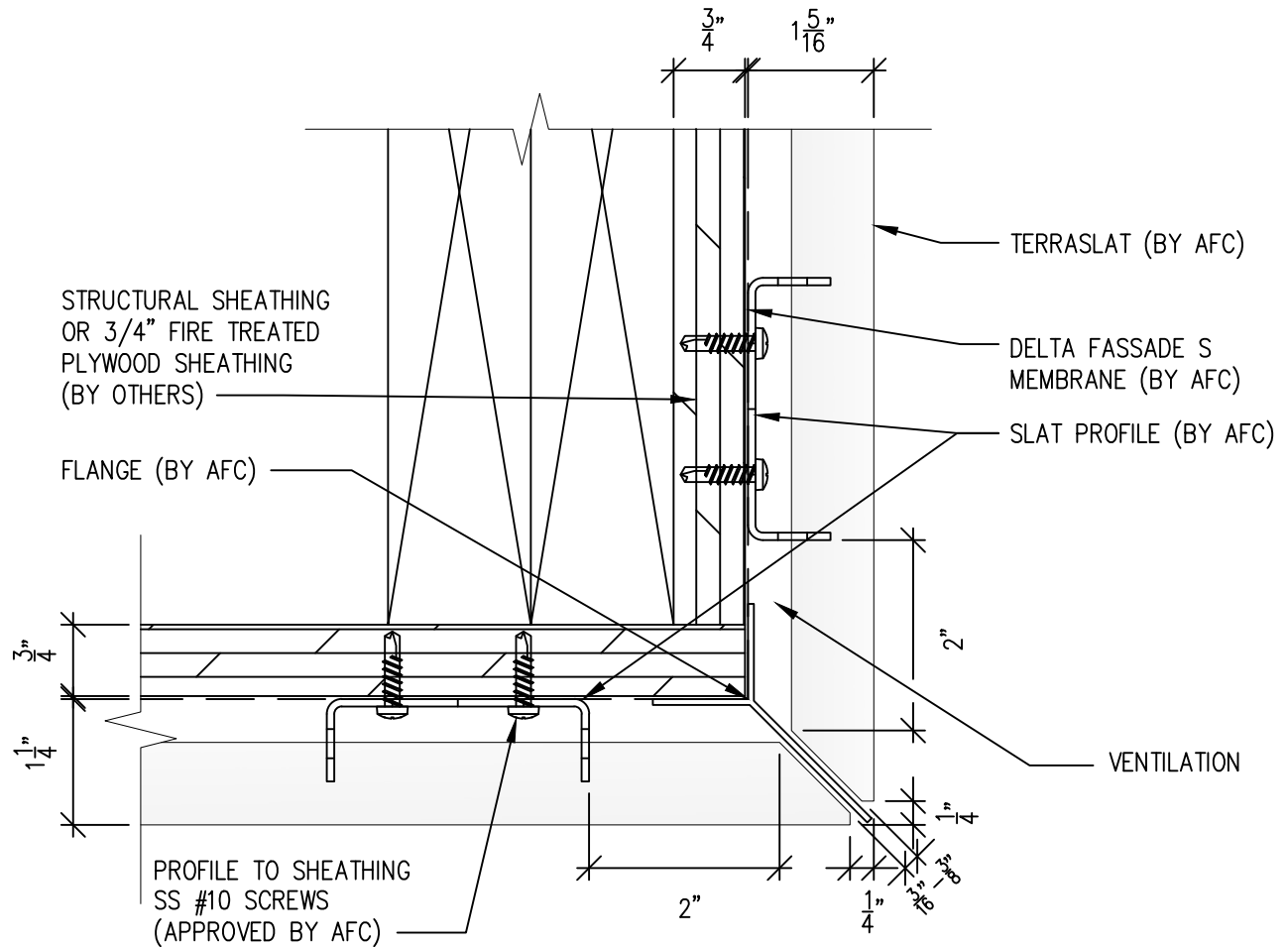


(303) 972-5107
6901 S Pierce St #180
Littleton, CO 80128
www.americanfibercement.com

Ref.:
Slat Edge @
Butt Joint

Date: 04/2024

TerraSlat Detail Set-Single Layer Horizontal Layout



SCALE: 6"=1'-0"

NOTES:

1. PANEL VERTICAL AND HORIZONTAL JOINT SPACING SHOULD BE 3/8" TYPICAL.



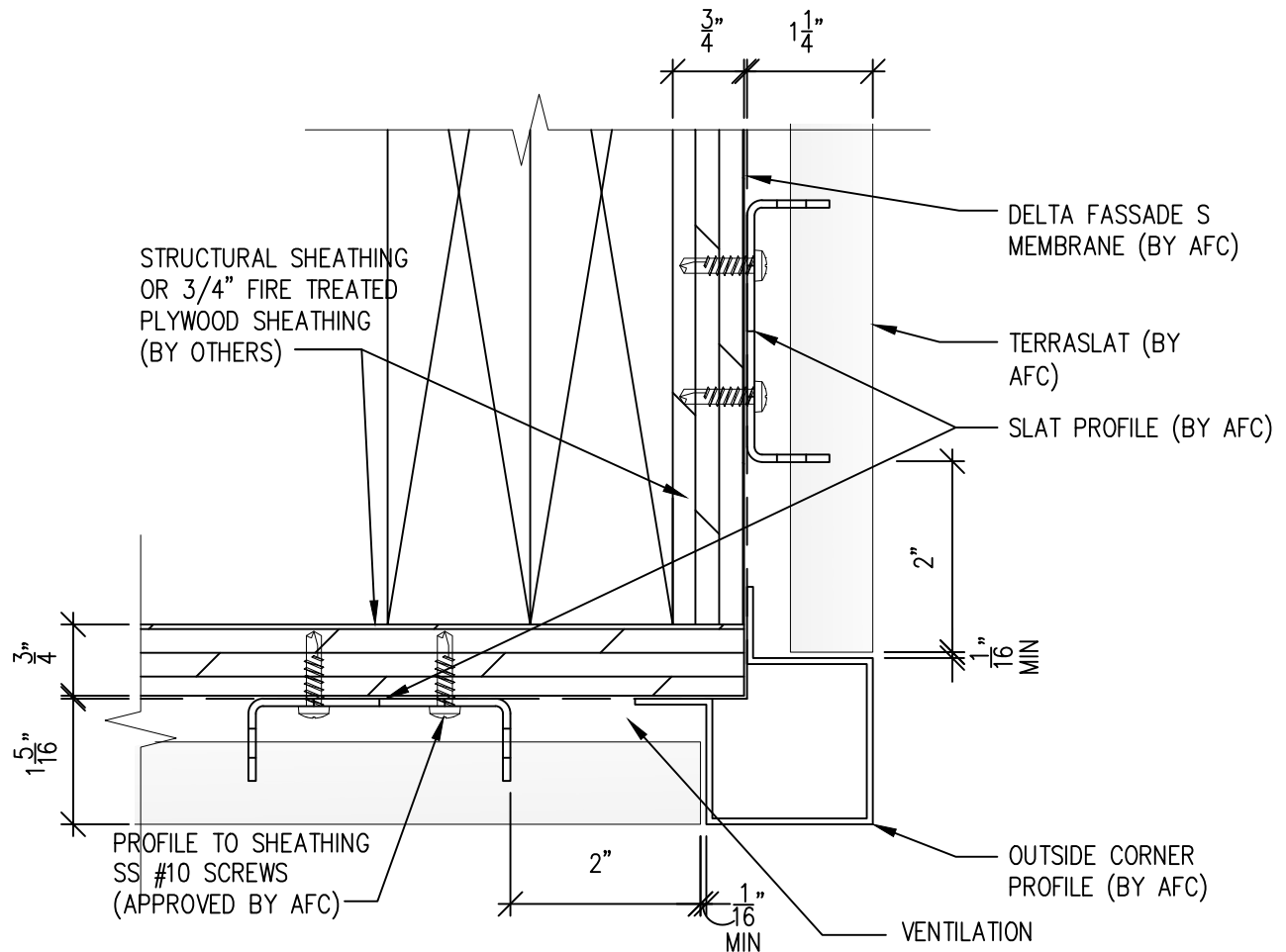
(303) 972-5107
6901 S Pierce St #180
Littleton, CO 80128

www.americanfibercement.com

Ref.:
Slats @
Outside Corner

Date: 04/2024

TerraSlat Detail Set-Single Layer Horizontal Layout



SCALE: 6"=1'-0"

NOTES:

1. PANEL VERTICAL AND HORIZONTAL JOINT SPACING SHOULD BE $\frac{3}{8}$ " TYPICAL.



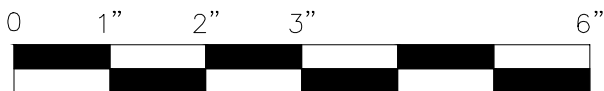
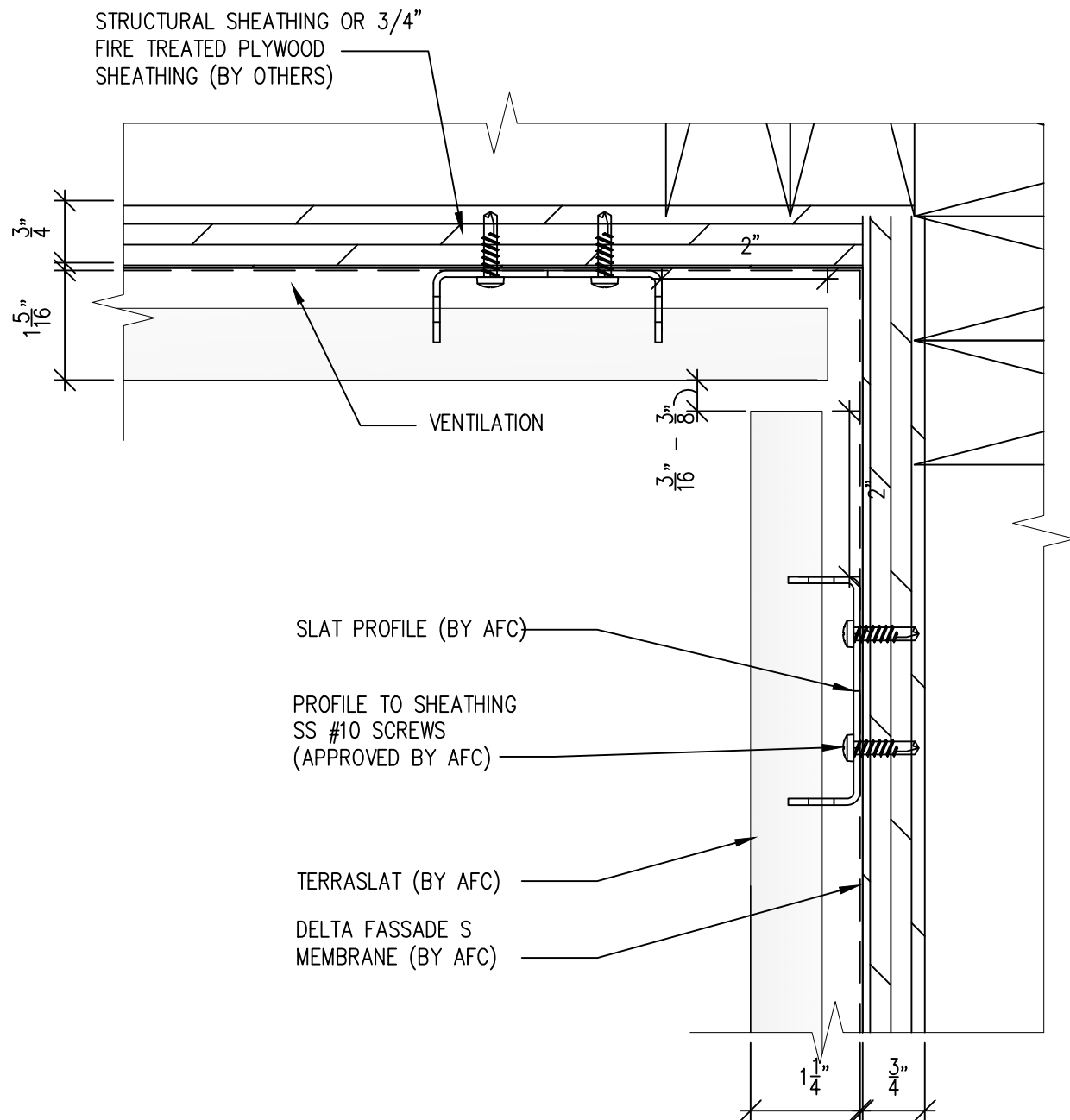
(303) 972-5107
6901 S Pierce St #180
Littleton, CO 80128

www.americanfibercement.com

Ref.:
Slat @
Outside Corner

Date: 04/2024

TerraSlat Detail Set-Single Layer Horizontal Layout



SCALE: 6"=1'-0"

NOTES:

1. PANEL VERTICAL AND HORIZONTAL JOINT SPACING SHOULD BE 3/8" TYPICAL.

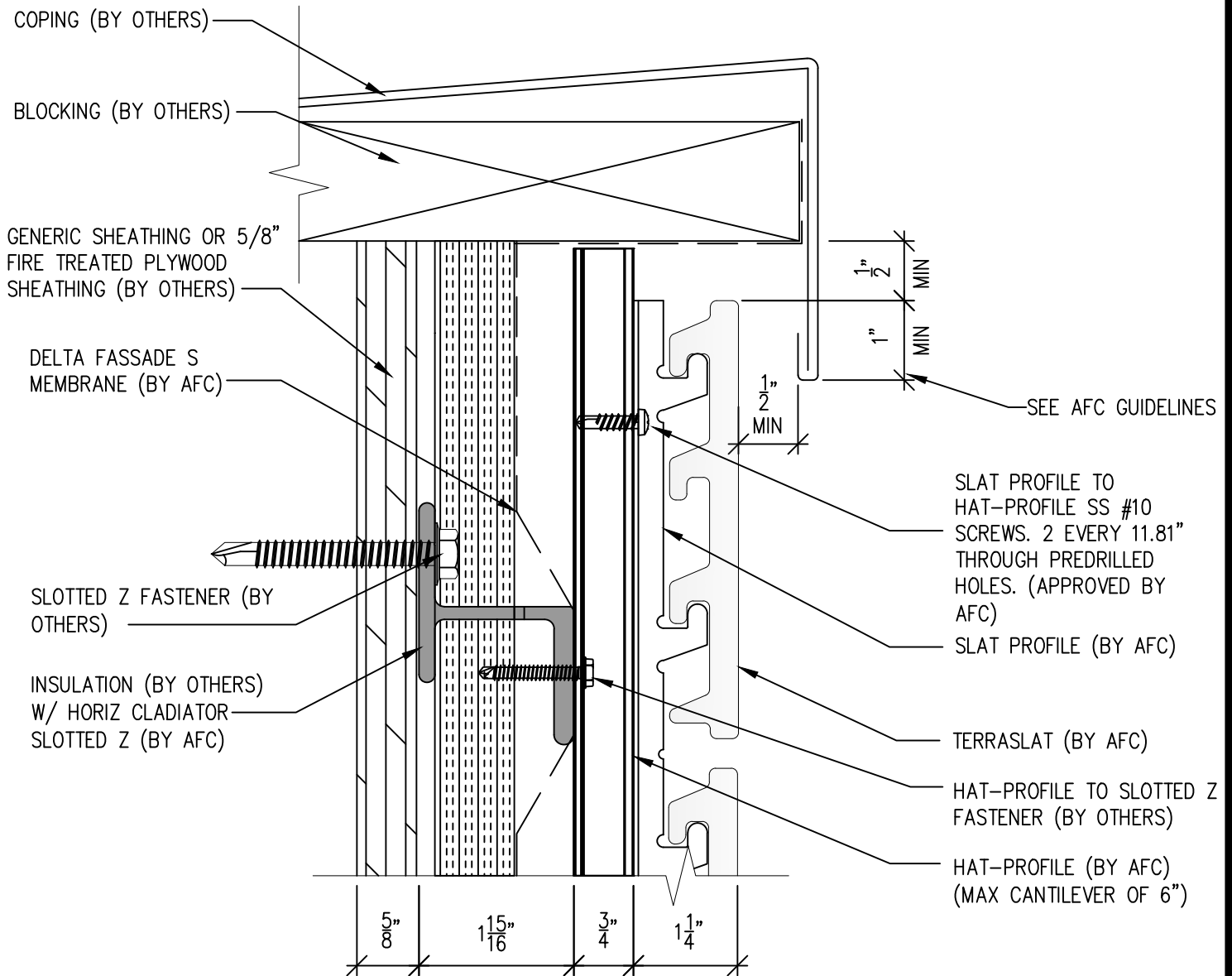


(303) 972-5107
6901 S Pierce St #180
Littleton, CO 80128
www.americanfibercement.com

Ref.:
Slat @
Inside Corner

Date: 04/2024

TerraSlat Detail Set-Two Layer Horizontal Layout

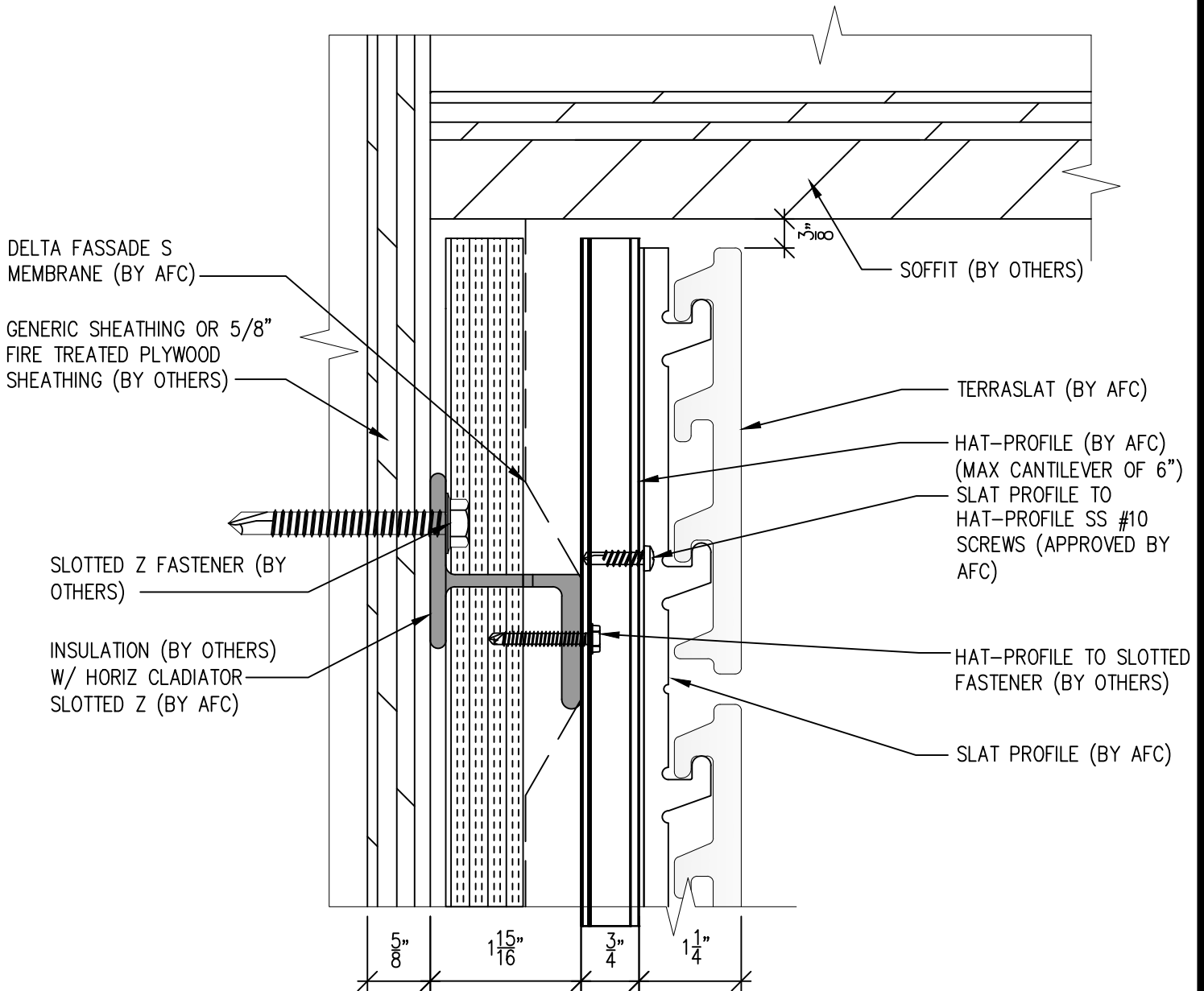


(303) 972-5107
6901 S Pierce St #180
Littleton, CO 80128
www.americanfibercement.com

Ref.:
Top of Slat @ Coping

Date: 04/2024

TerraSlat Detail Set-Two Layer Horizontal Layout



SCALE: 6"=1'-0"

NOTES:

1. PANEL VERTICAL AND HORIZONTAL JOINT SPACING SHOULD BE 3/8" TYPICAL.

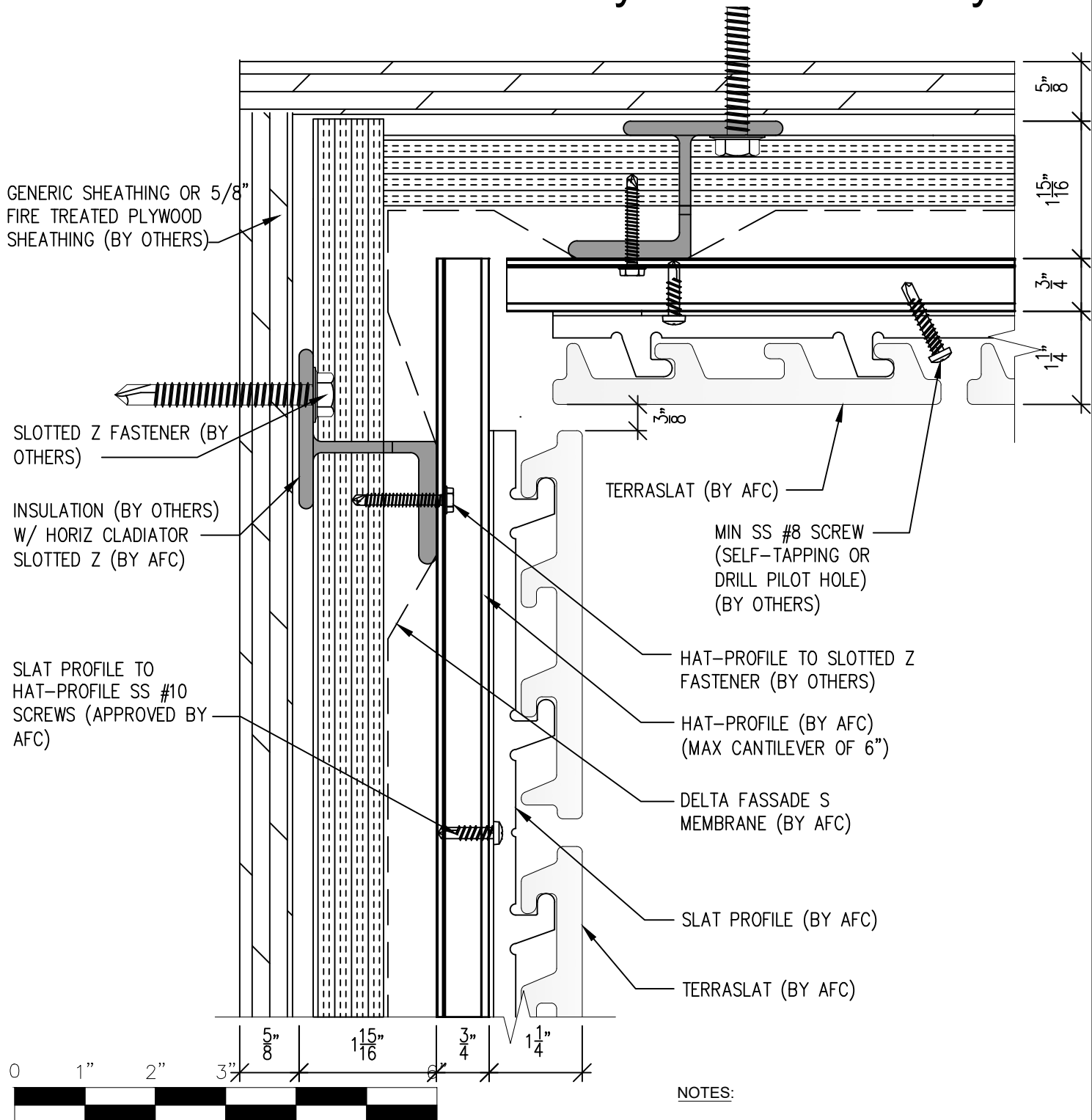


(303) 972-5107
6901 S Pierce St #180
Littleton, CO 80128
www.americanfibercement.com

Ref.:
Top of Slat @
Soffit

Date: 04/2024

TerraSlat Detail Set-Two Layer Horizontal Layout



NOTES:

1. PANEL VERTICAL AND HORIZONTAL JOINT SPACING SHOULD BE 3/8" TYPICAL.



(303) 972-5107
6901 S Pierce St #180
Littleton, CO 80128

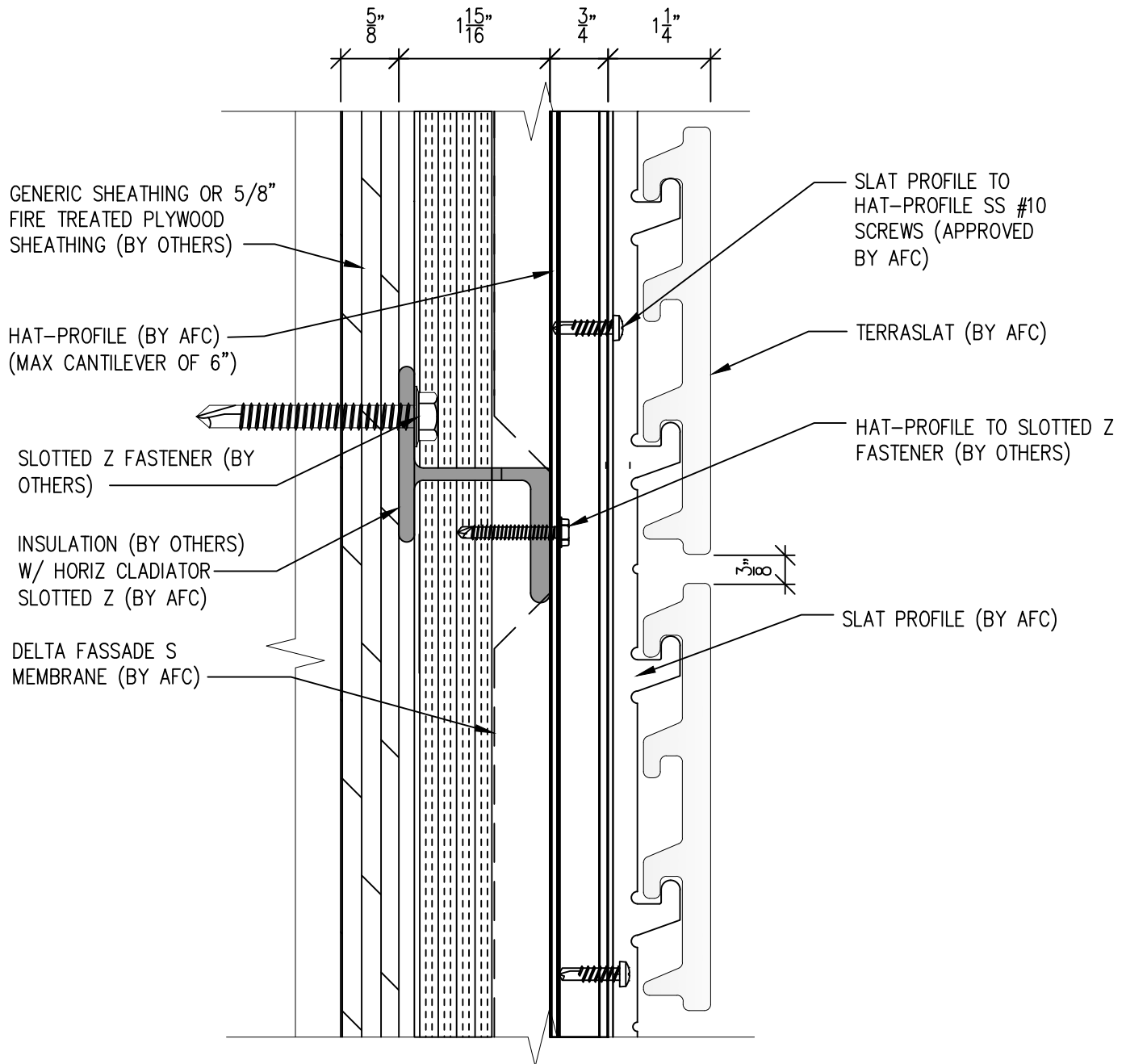
www.americanfibercement.com

Ref.:

Top of Slat @
AFC TerraSlat Soffit

Date: 04/2024

TerraSlat Detail Set-Two Layer Horizontal Layout



SCALE: 6"=1'-0"

NOTES:

1. PANEL VERTICAL AND HORIZONTAL JOINT SPACING SHOULD BE 3/8" TYPICAL.

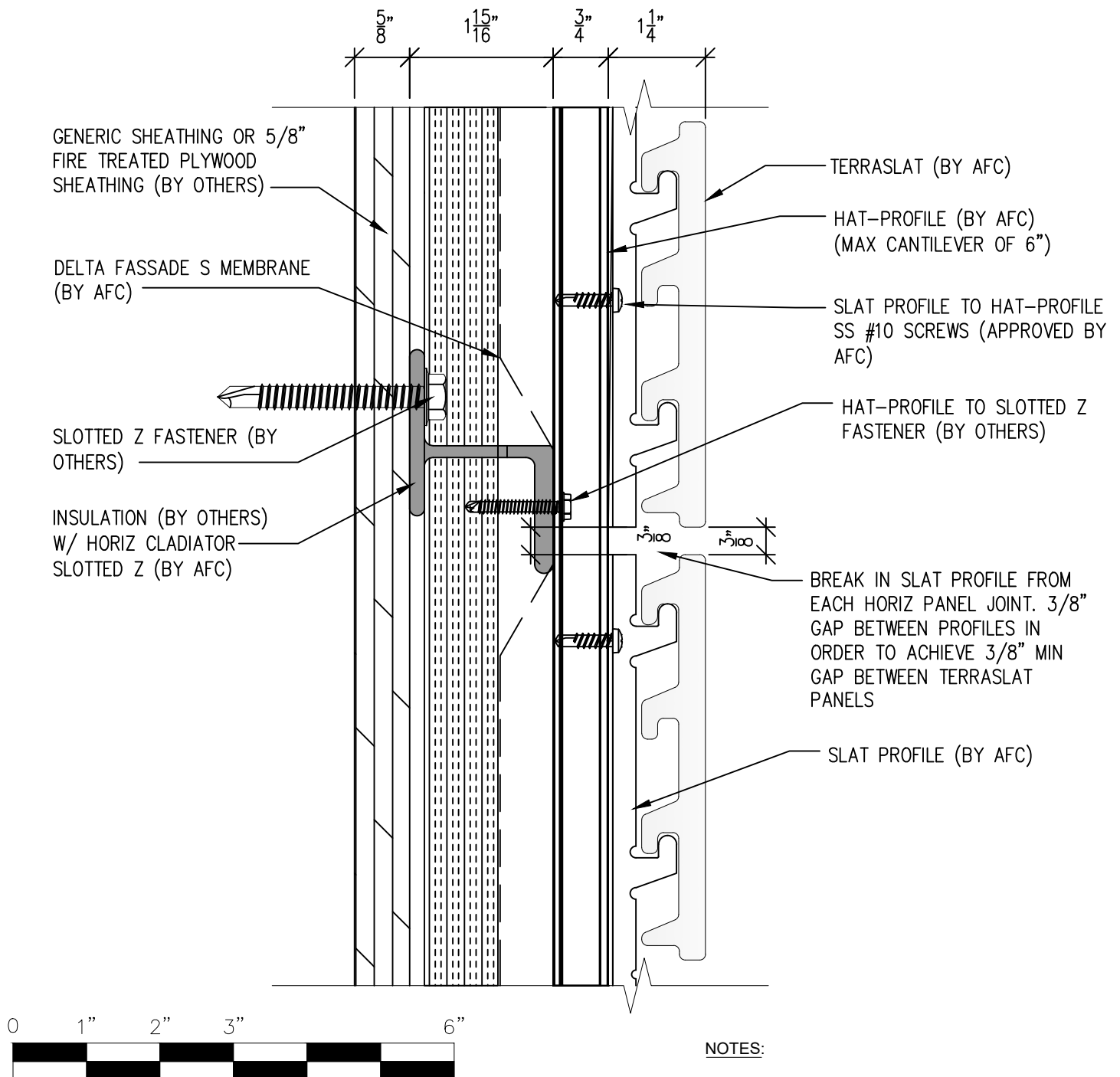


(303) 972-5107
6901 S Pierce St #180
Littleton, CO 80128
www.americanfibercement.com

Ref.: Horizontal Joint @
Continuous Substrate

Date: 04/2024

TerraSlat Detail Set-Two Layer Horizontal Layout



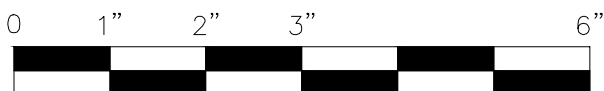
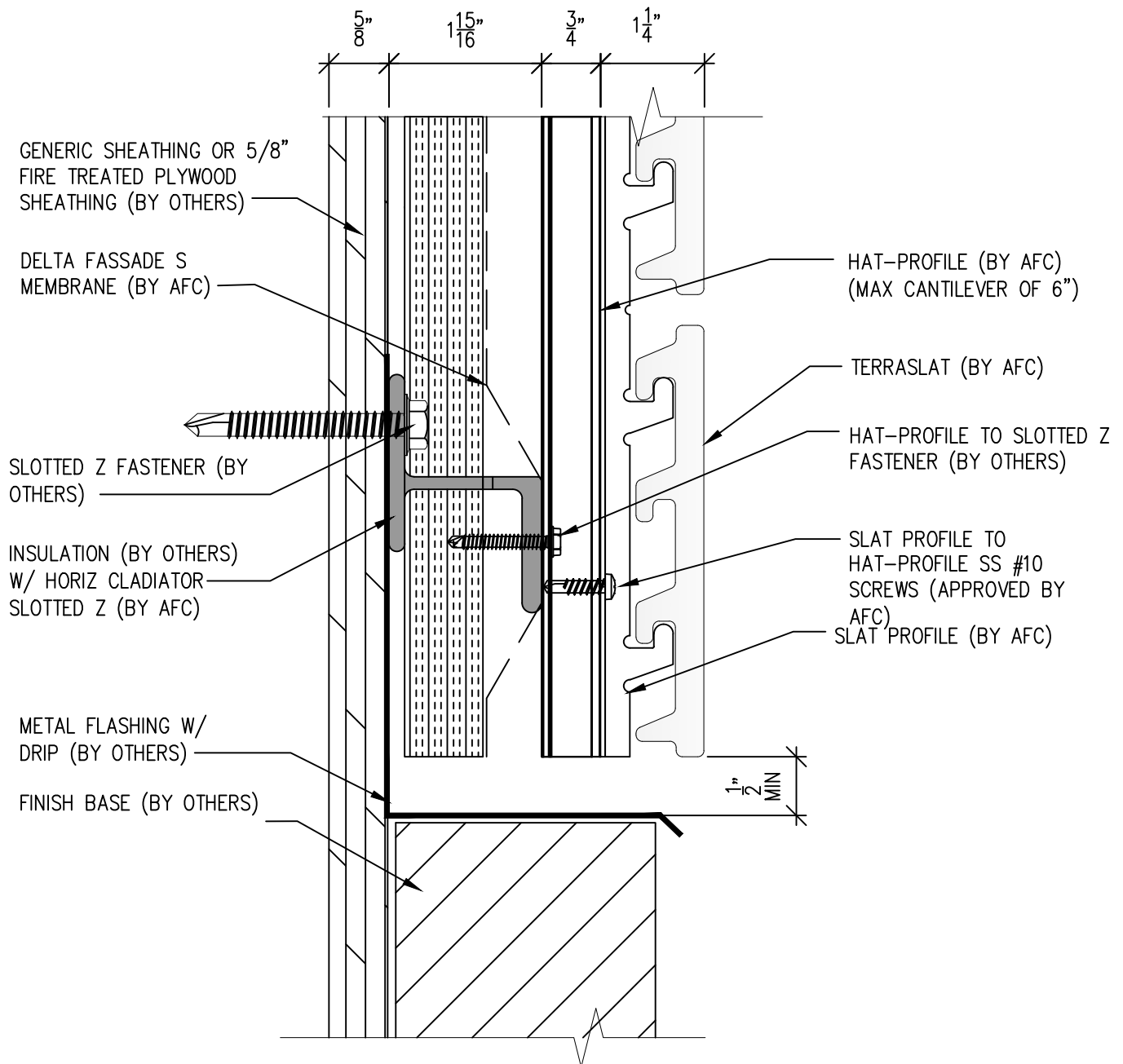
(303) 972-5107
6901 S Pierce St #180
Littleton, CO 80128

www.americanfibercement.com

Ref.:
Horizontal Joint @
Break in Substrate

Date: 04/2024

TerraSlat Detail Set-Two Layer Horizontal Layout



SCALE: 6"=1'-0"

NOTES:

1. PANEL VERTICAL AND HORIZONTAL JOINT SPACING SHOULD BE 3/8" TYPICAL.



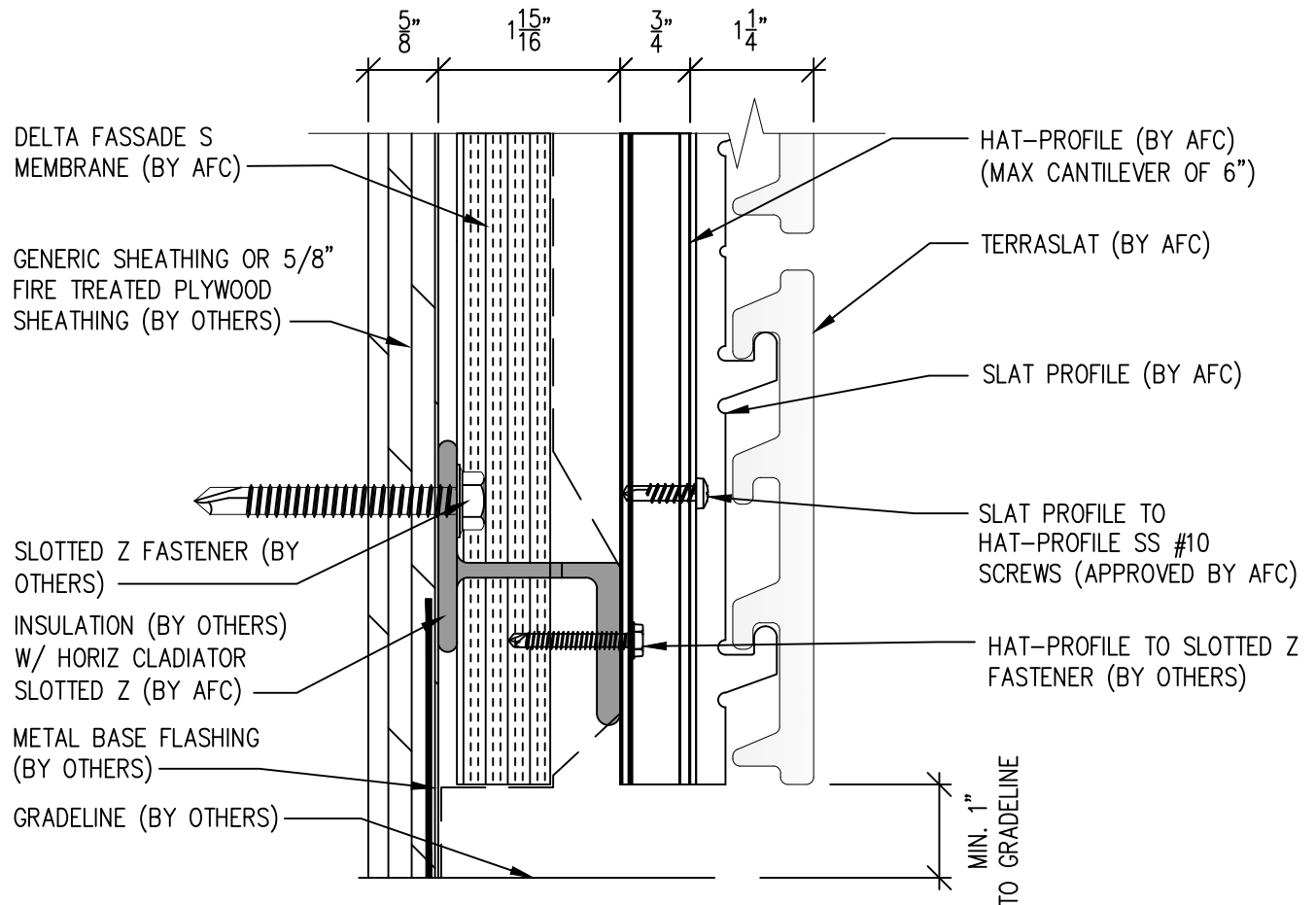
(303) 972-5107
6901 S Pierce St #180
Littleton, CO 80128

www.americanfibercement.com

Ref.:
Bottom of Slat @
Wall Base

Date: 04/2024

TerraSlat Detail Set-Two Layer Horizontal Layout



NOTE:
HOLD BASE OF TERRASLAT PANEL 6"-12" OFF GRADE BASED ON EXPECTED SNOW BUILDUP



SCALE: 6"=1'-0"

NOTES:

1. PANEL VERTICAL AND HORIZONTAL JOINT SPACING SHOULD BE 3/8" TYPICAL.



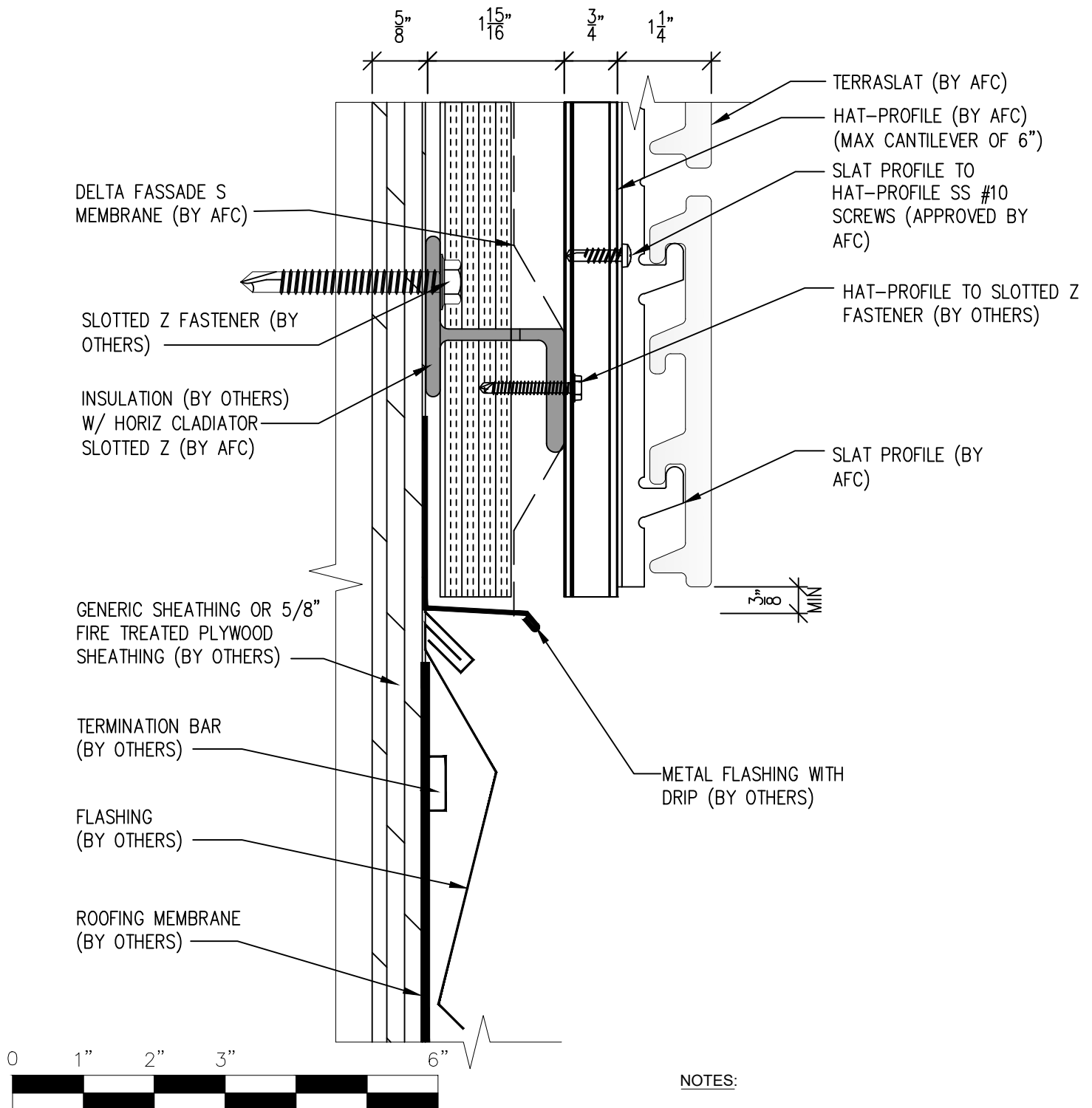
(303) 972-5107
6901 S Pierce St #180
Littleton, CO 80128

www.americanfibercement.com

Ref.:
Bottom of Slat @
Open Termination

Date: 04/2024

TerraSlat Detail Set-Two Layer Horizontal Layout



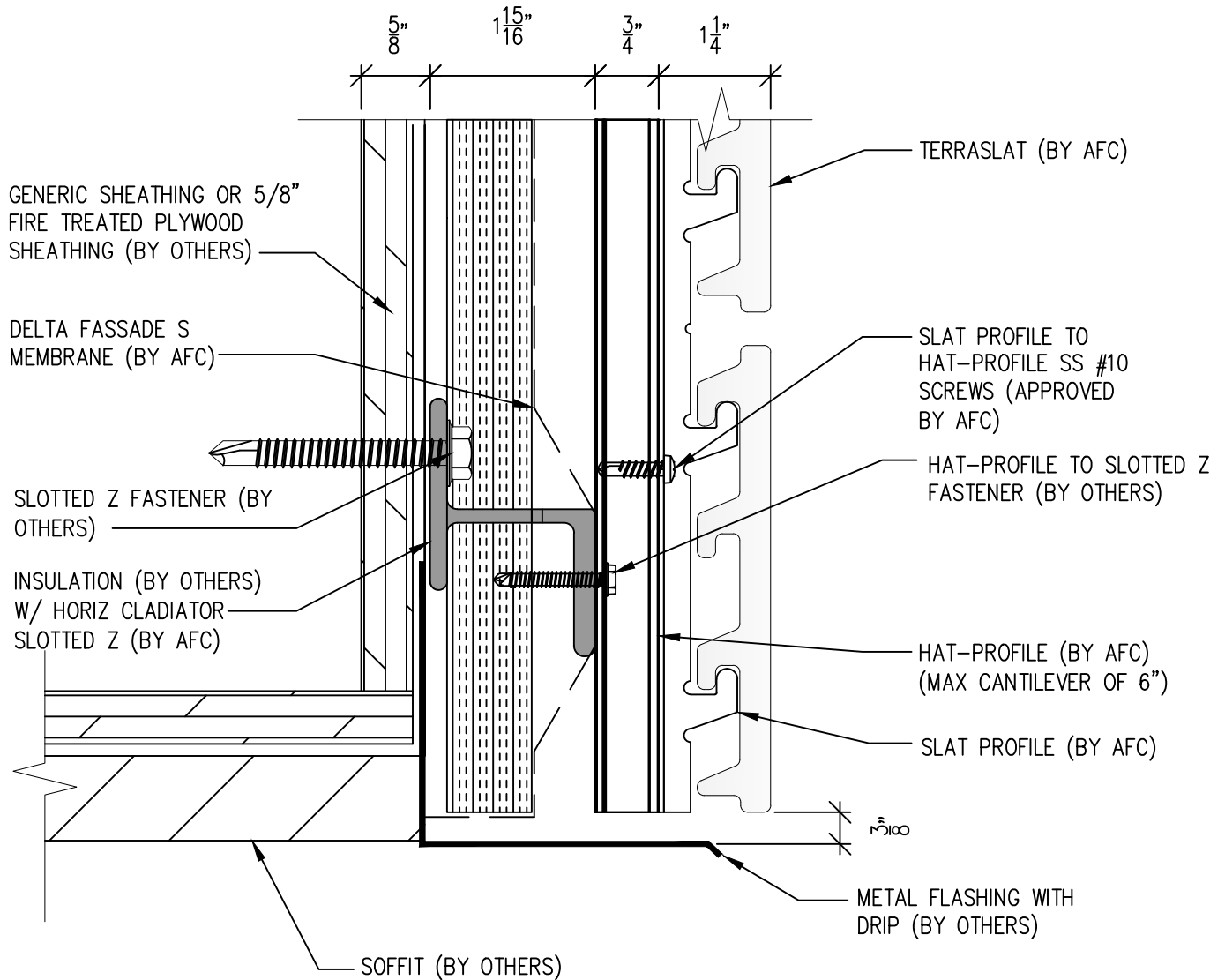
(303) 972-5107
6901 S Pierce St #180
Littleton, CO 80128

www.americanfibercement.com

Ref.:
Bottom of Slat @
Low Roof Flashing

Date: 04/2024

TerraSlat Detail Set-Two Layer Horizontal Layout



SCALE: 6"=1'-0"

NOTES:

1. PANEL VERTICAL AND HORIZONTAL JOINT SPACING SHOULD BE 3/8" TYPICAL.



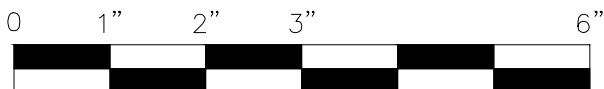
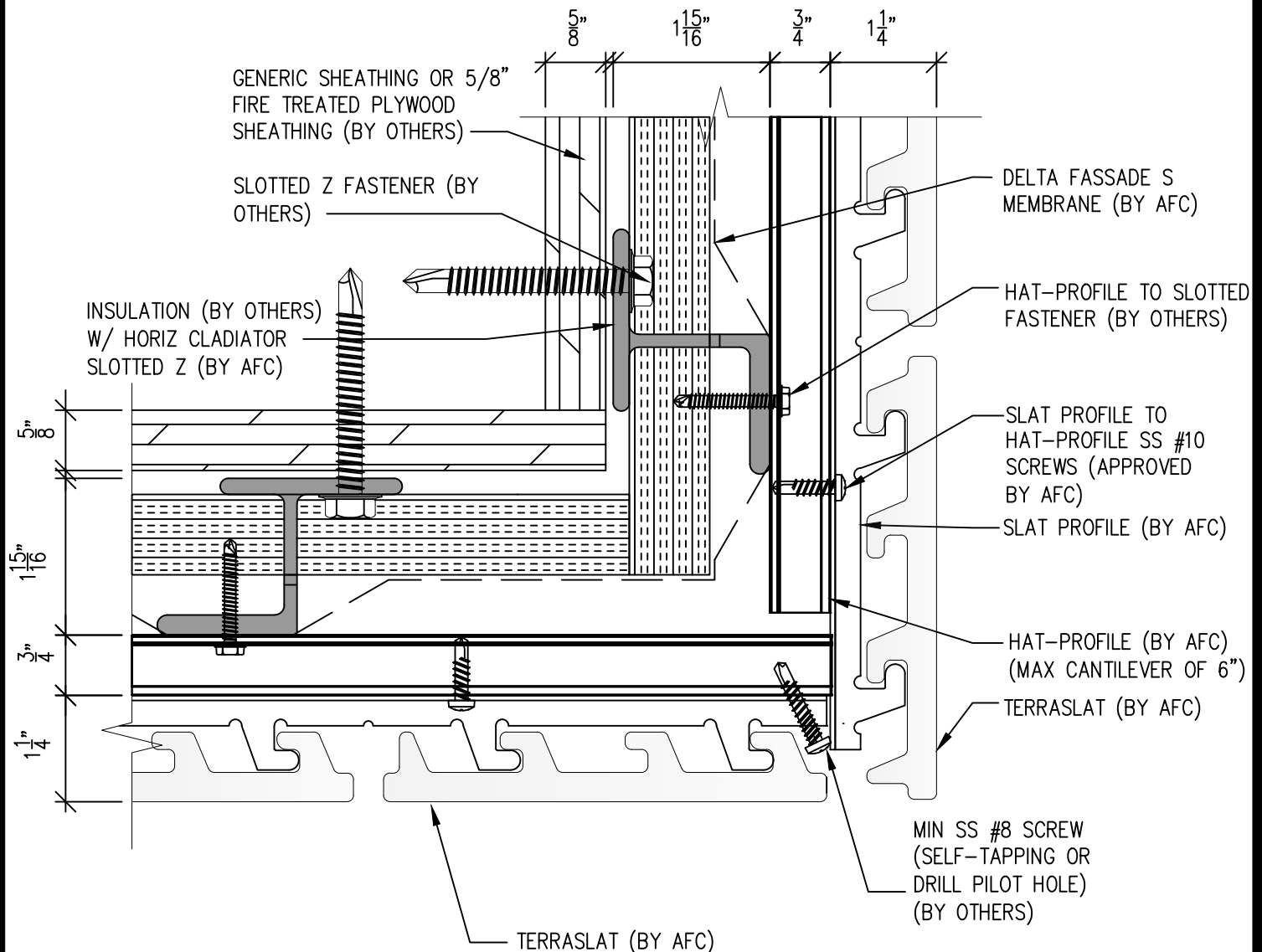
(303) 972-5107
6901 S Pierce St #180
Littleton, CO 80128

www.americanfibercement.com

Ref.:
Bottom of Slat @
Soffit(Alternate)

Date: 04/2024

TerraSlat Detail Set-Two Layer Horizontal Layout



SCALE: 6"=1'-0"

NOTES:

1. PANEL VERTICAL AND HORIZONTAL JOINT SPACING SHOULD BE 3/8" TYPICAL.



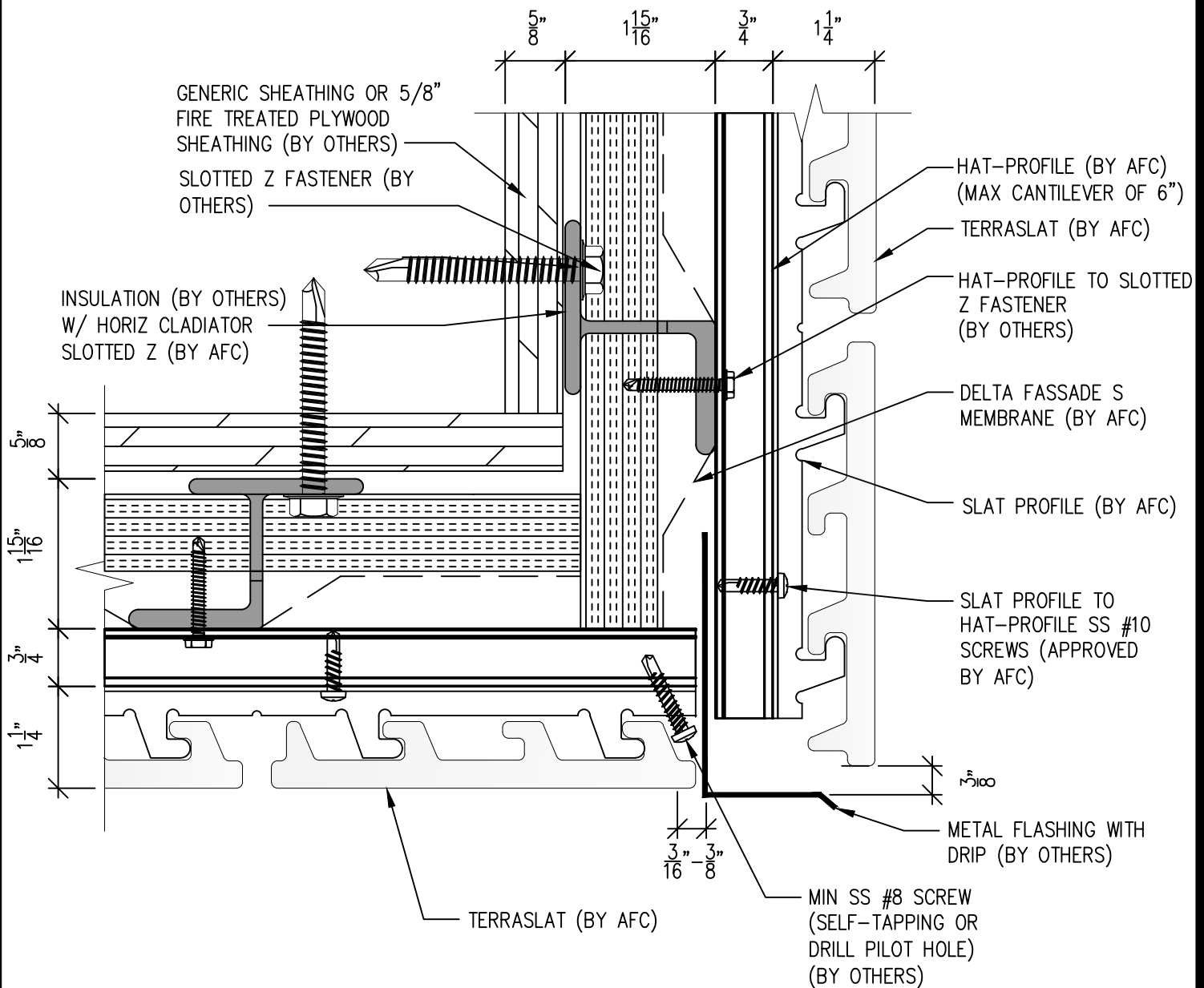
(303) 972-5107
6901 S Pierce St #180
Littleton, CO 80128

www.americanfibercement.com

Ref.:
Bottom of Slat @
F.C.P Soffit

Date: 04/2024

TerraSlat Detail Set-Two Layer Horizontal Layout

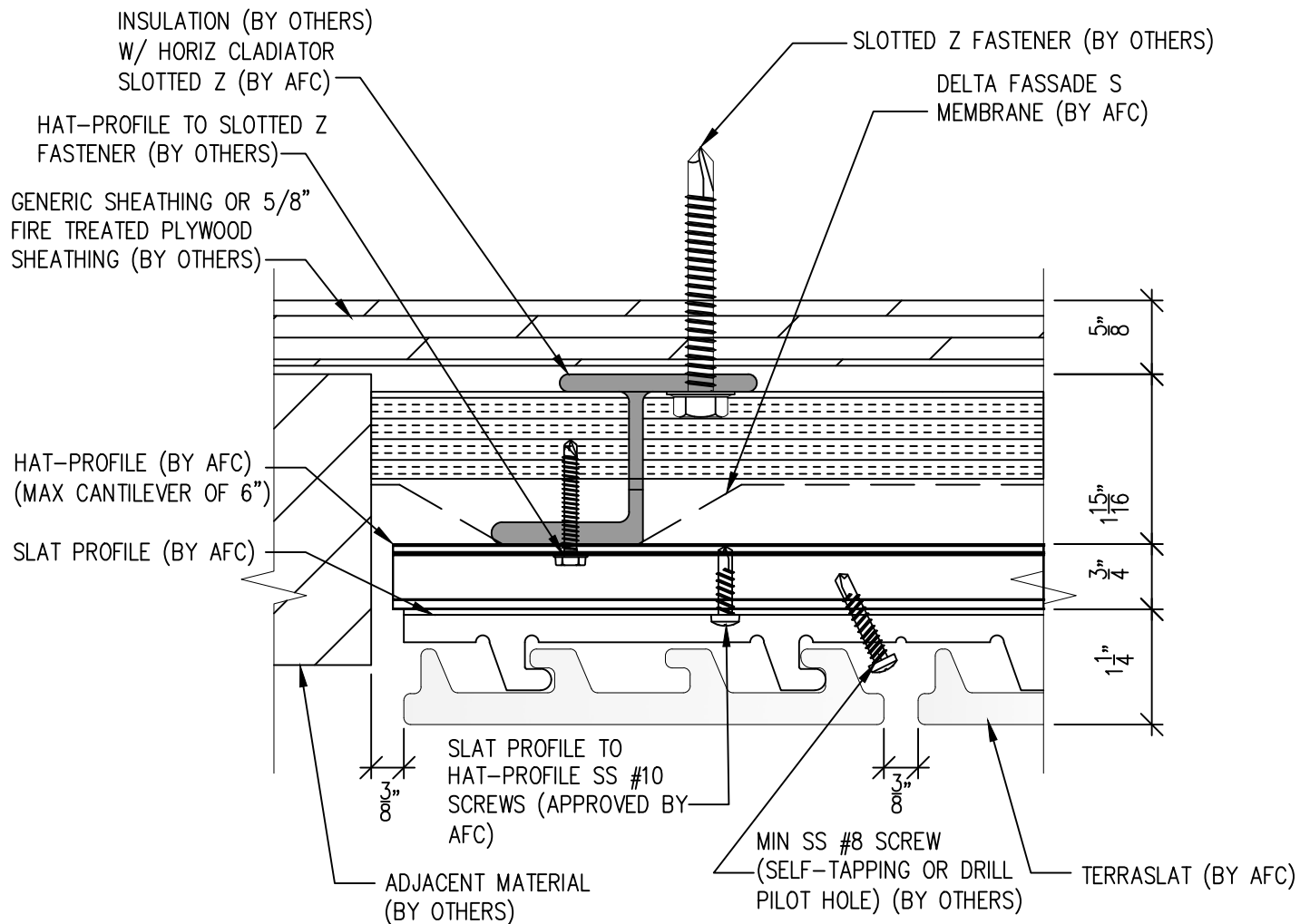


(303) 972-5107
6901 S Pierce St #180
Littleton, CO 80128
www.americanfibercement.com

Ref.:
Bottom of Slat @
F.C.P Soffit(Alternate)

Date: 04/2024

TerraSlat Detail Set-Two Layer Horizontal Layout



SCALE: 6"=1'-0"

NOTES:

1. PANEL VERTICAL AND HORIZONTAL JOINT SPACING SHOULD BE 3/8" TYPICAL.

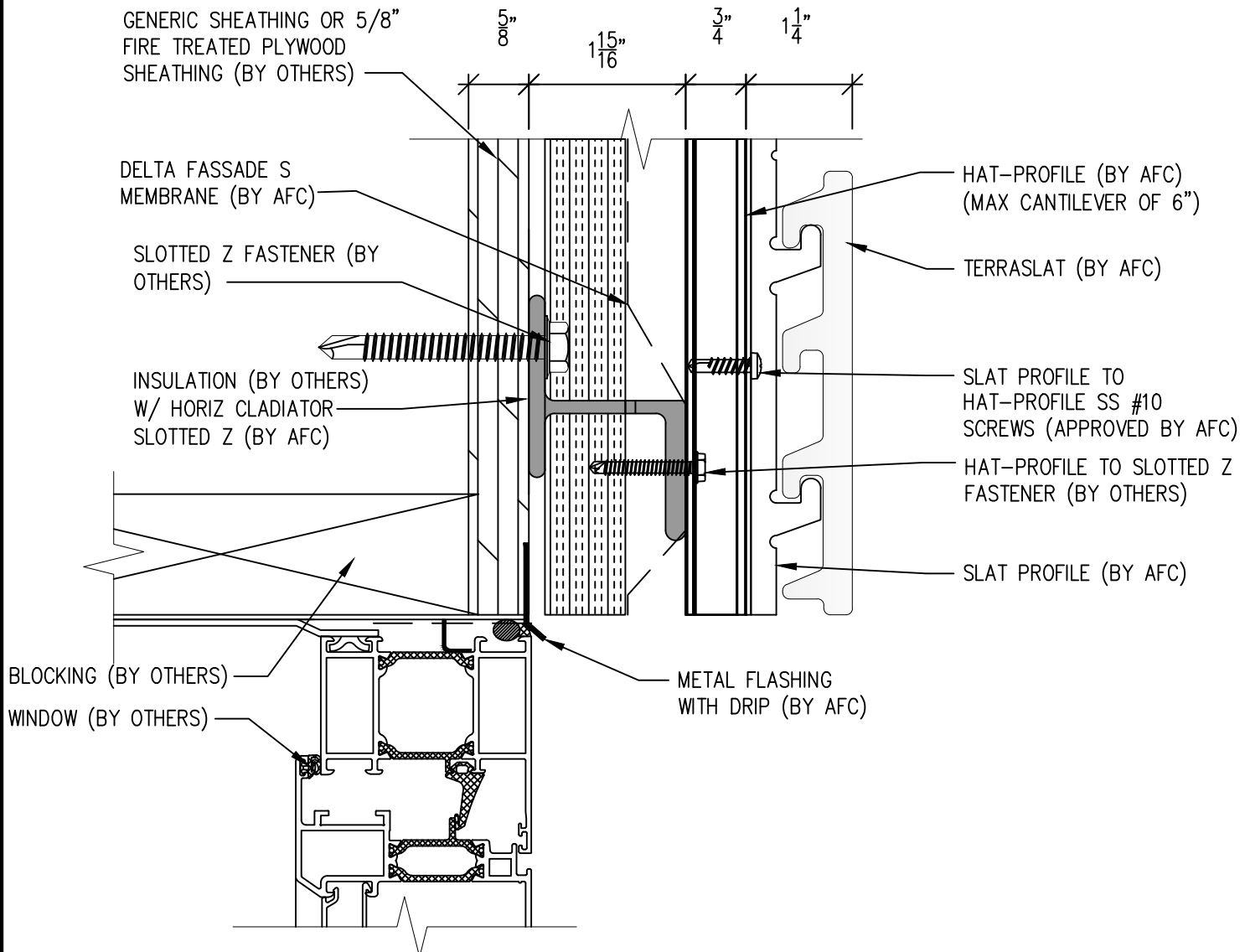


(303) 972-5107
6901 S Pierce St #180
Littleton, CO 80128
www.americanfibercement.com

Ref.:
Soffit Termination @
Adjacent Material

Date: 04/2024

TerraSlat Detail Set-Two Layer Horizontal Layout



NOTES:

1. PANEL VERTICAL AND HORIZONTAL JOINT SPACING SHOULD BE 3/8" TYPICAL.



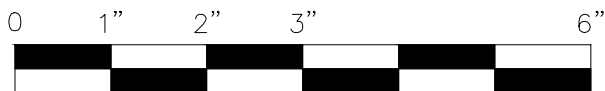
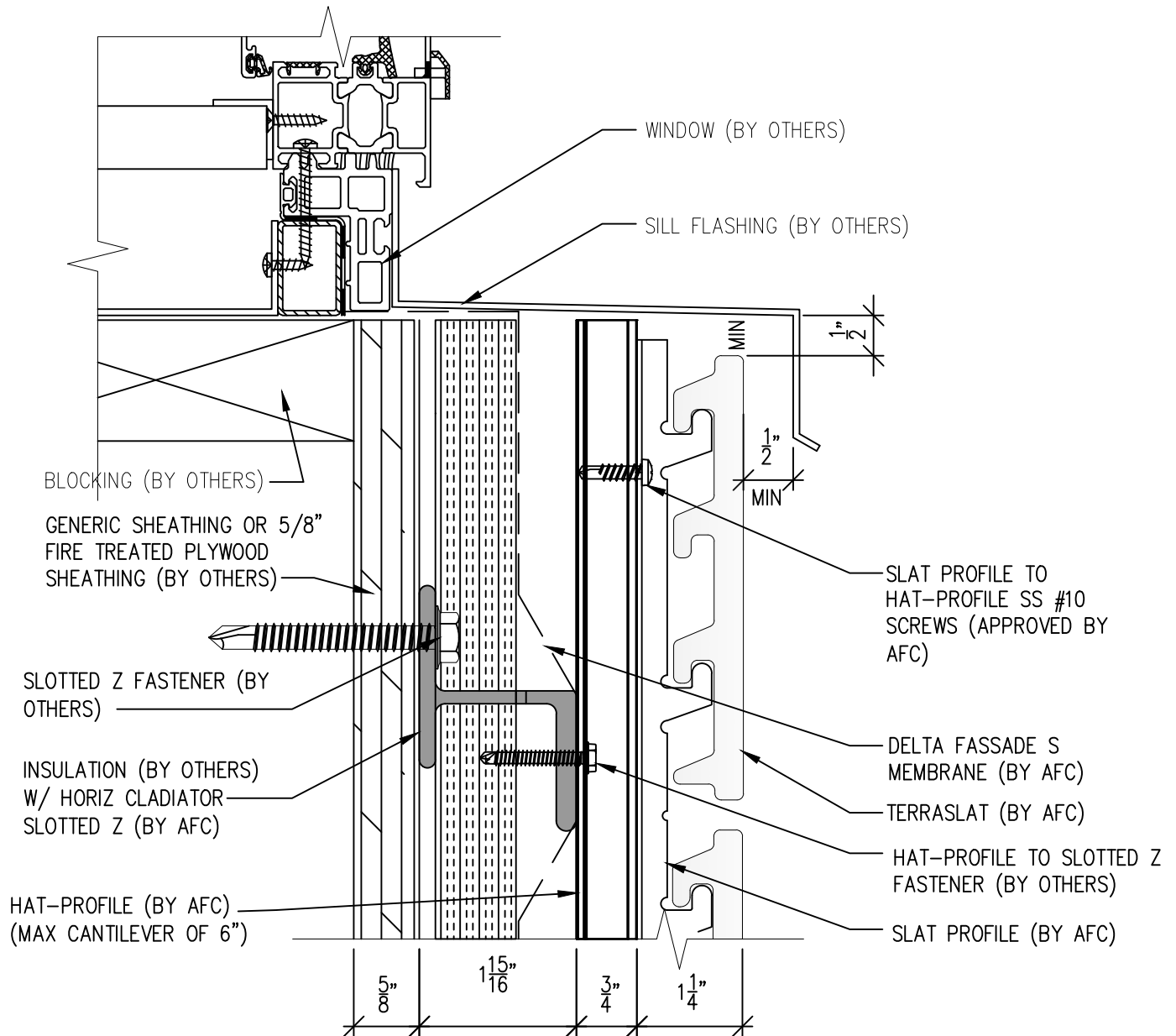
(303) 972-5107
6901 S Pierce St #180
Littleton, CO 80128

www.americanfibercement.com

Ref.:
Bottom of Slat @
Window Head

Date: 04/2024

TerraSlat Detail Set-Two Layer Horizontal Layout



SCALE: 6"=1'-0"

NOTES:

1. PANEL VERTICAL AND HORIZONTAL JOINT SPACING SHOULD BE 3/8" TYPICAL.

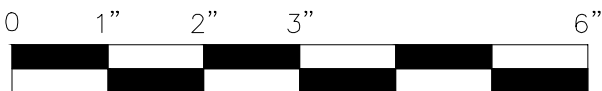
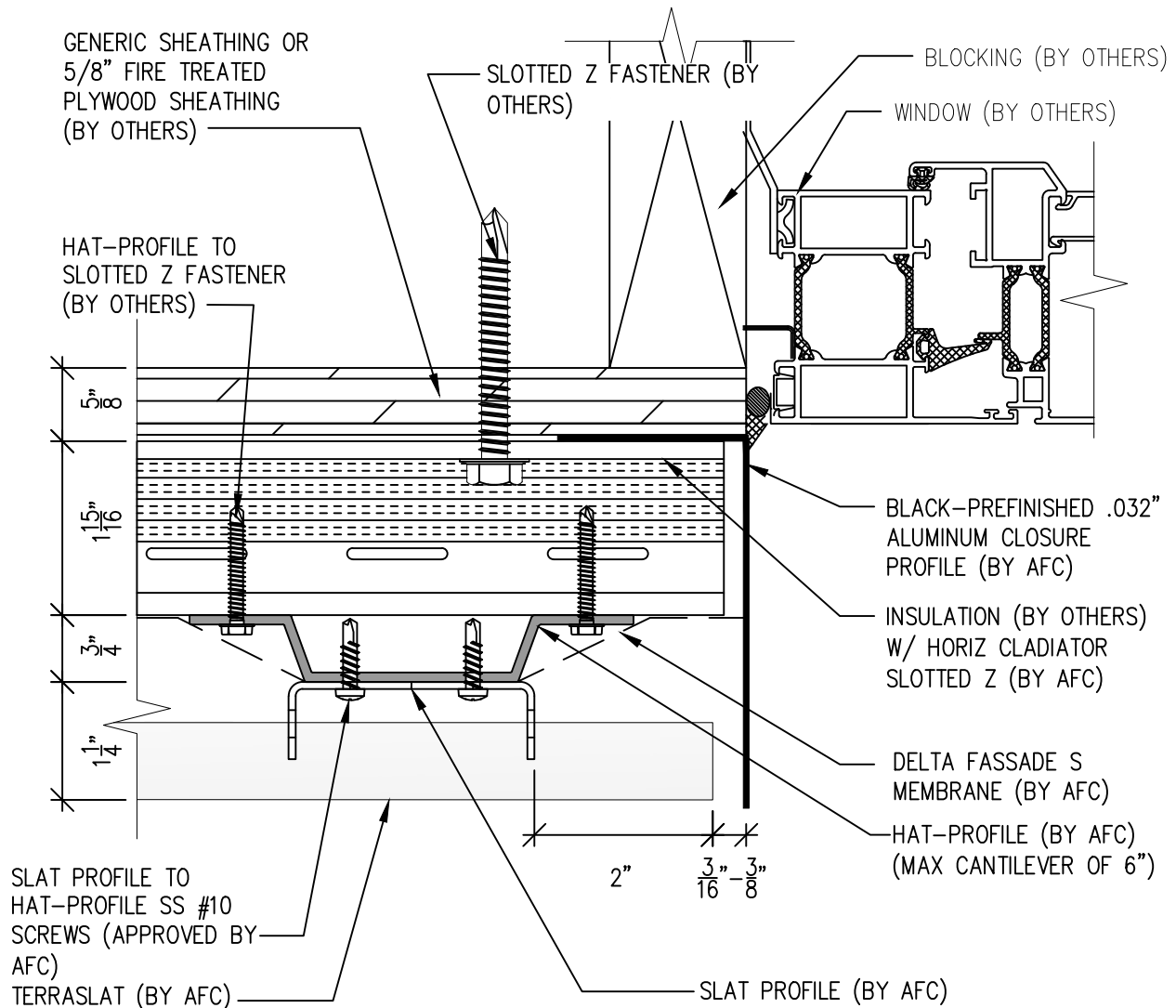


(303) 972-5107
6901 S Pierce St #180
Littleton, CO 80128
www.americanfibercement.com

Ref.:
Top of Slat @
Window Sill

Date: 04/2024

TerraSlat Detail Set-Two Layer Horizontal Layout



SCALE: 6"=1'-0"

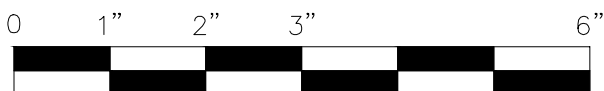
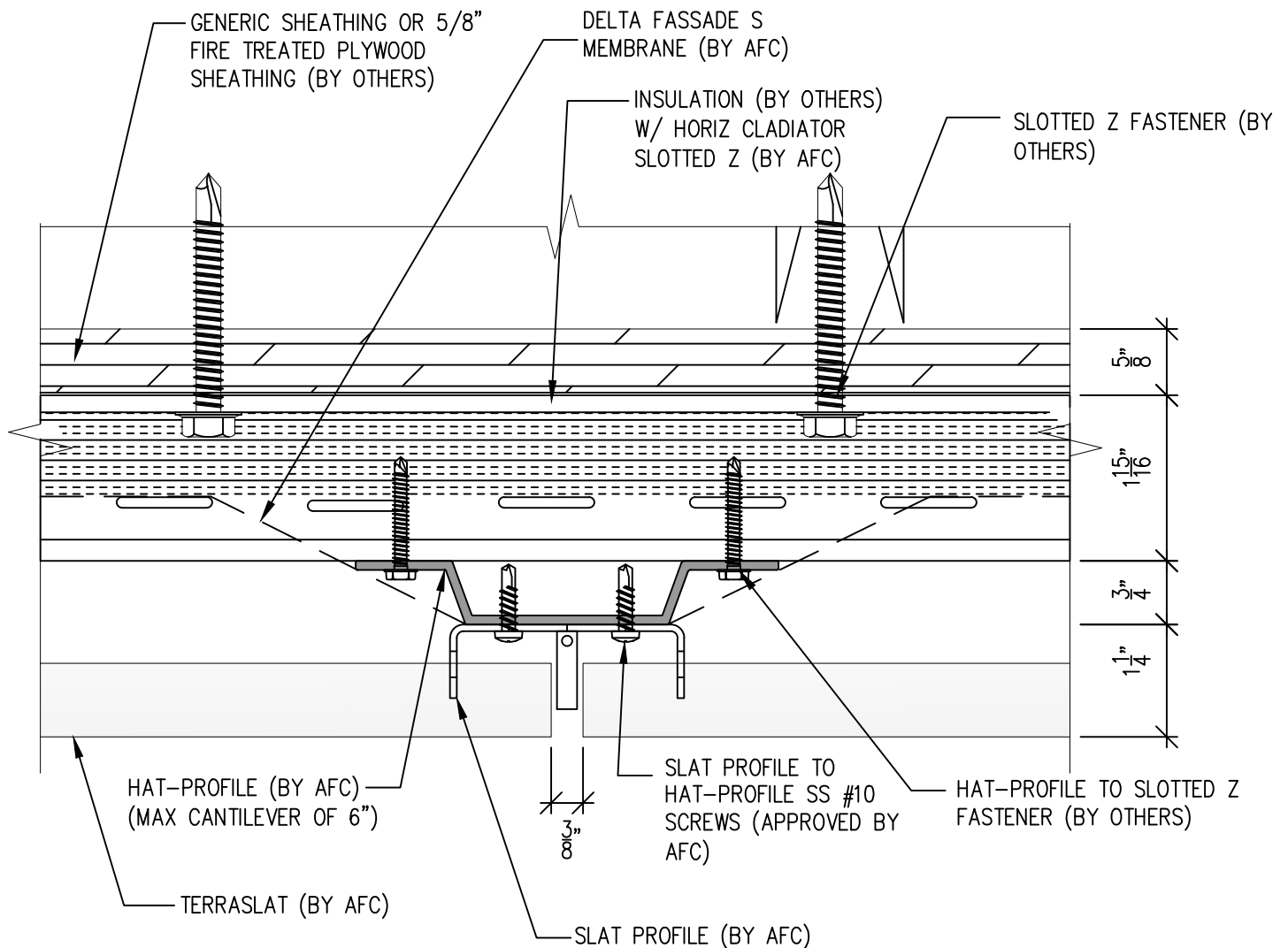


(303) 972-5107
6901 S Pierce St #180
Littleton, CO 80128
www.americanfibercement.com

Ref.:
Slat Edge @
Window Jamb

Date: 04/2024

TerraSlat Detail Set-Two Layer Horizontal Layout



SCALE: 6"=1'-0"

NOTES:

1. PANEL VERTICAL AND HORIZONTAL JOINT SPACING SHOULD BE 3/8" TYPICAL.

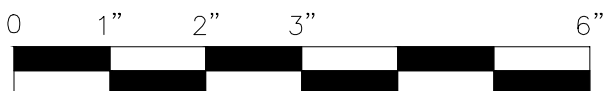
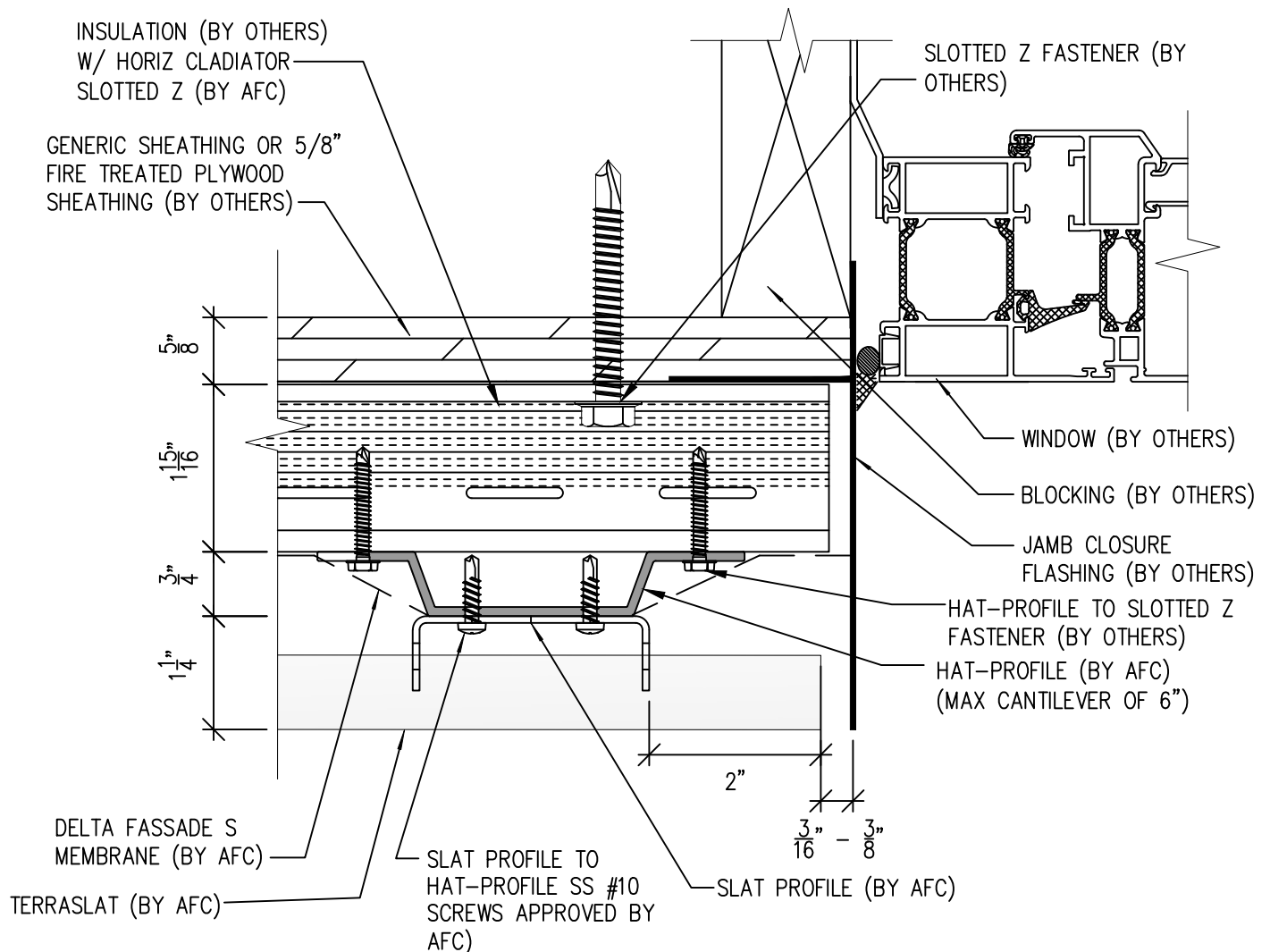


(303) 972-5107
6901 S Pierce St #180
Littleton, CO 80128
www.americanfibercement.com

Ref.:
Vertical Slat Joint

Date: 04/2024

TerraSlat Detail Set-Two Layer Horizontal Layout



SCALE: 6"=1'-0"

NOTES:

1. PANEL VERTICAL AND HORIZONTAL JOINT SPACING SHOULD BE 3/8" TYPICAL.



(303) 972-5107
6901 S Pierce St #180
Littleton, CO 80128

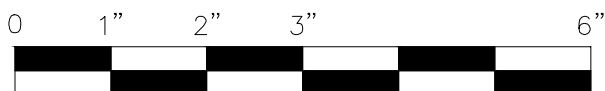
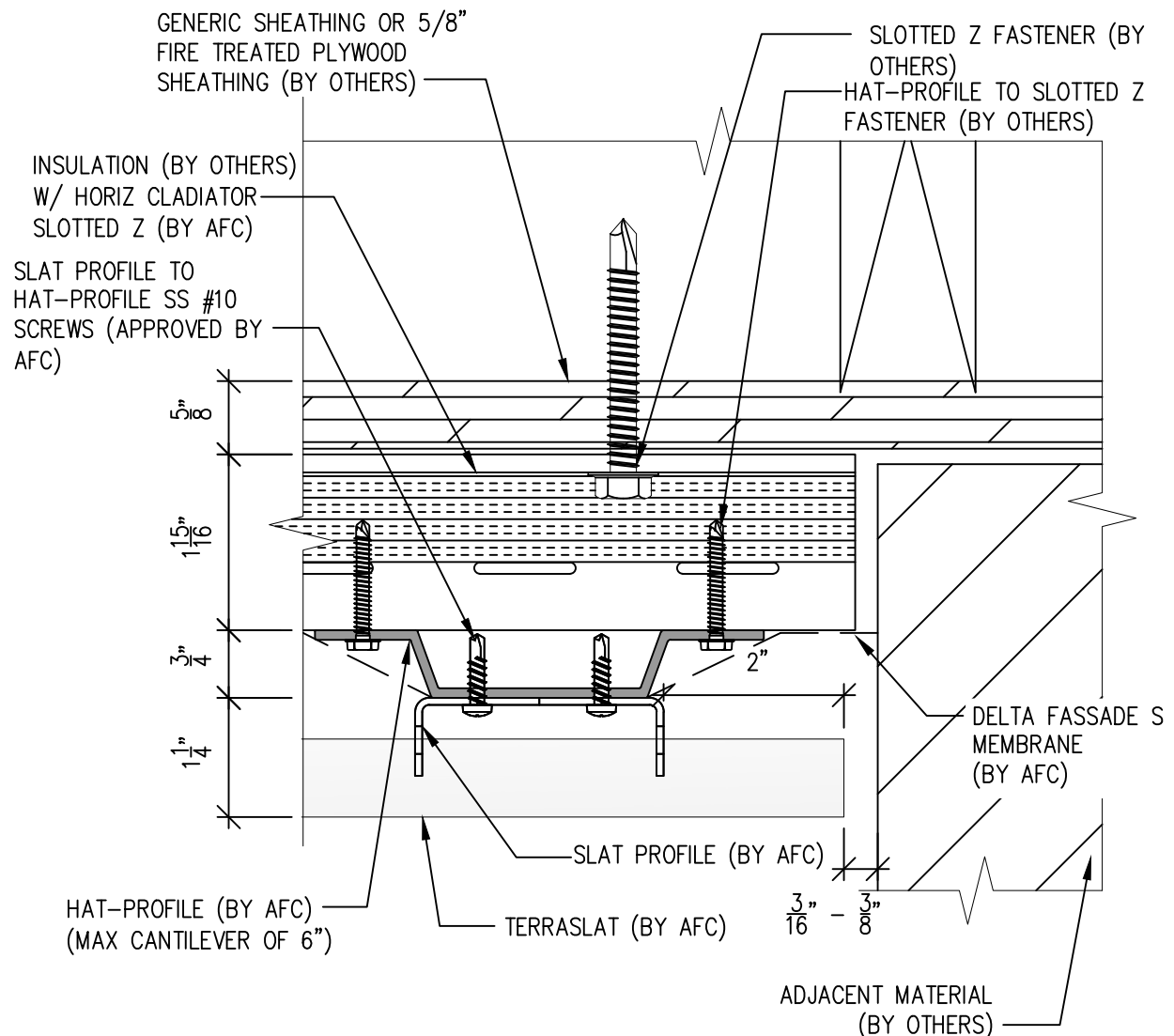
www.americanfibercement.com

Ref.:

Slat Edge @ Window Jamb
Alternate

Date: 04/2024

TerraSlat Detail Set-Two Layer Horizontal Layout



SCALE: 6"=1'-0"

NOTES:

1. PANEL VERTICAL AND HORIZONTAL JOINT SPACING SHOULD BE 3/8" TYPICAL.



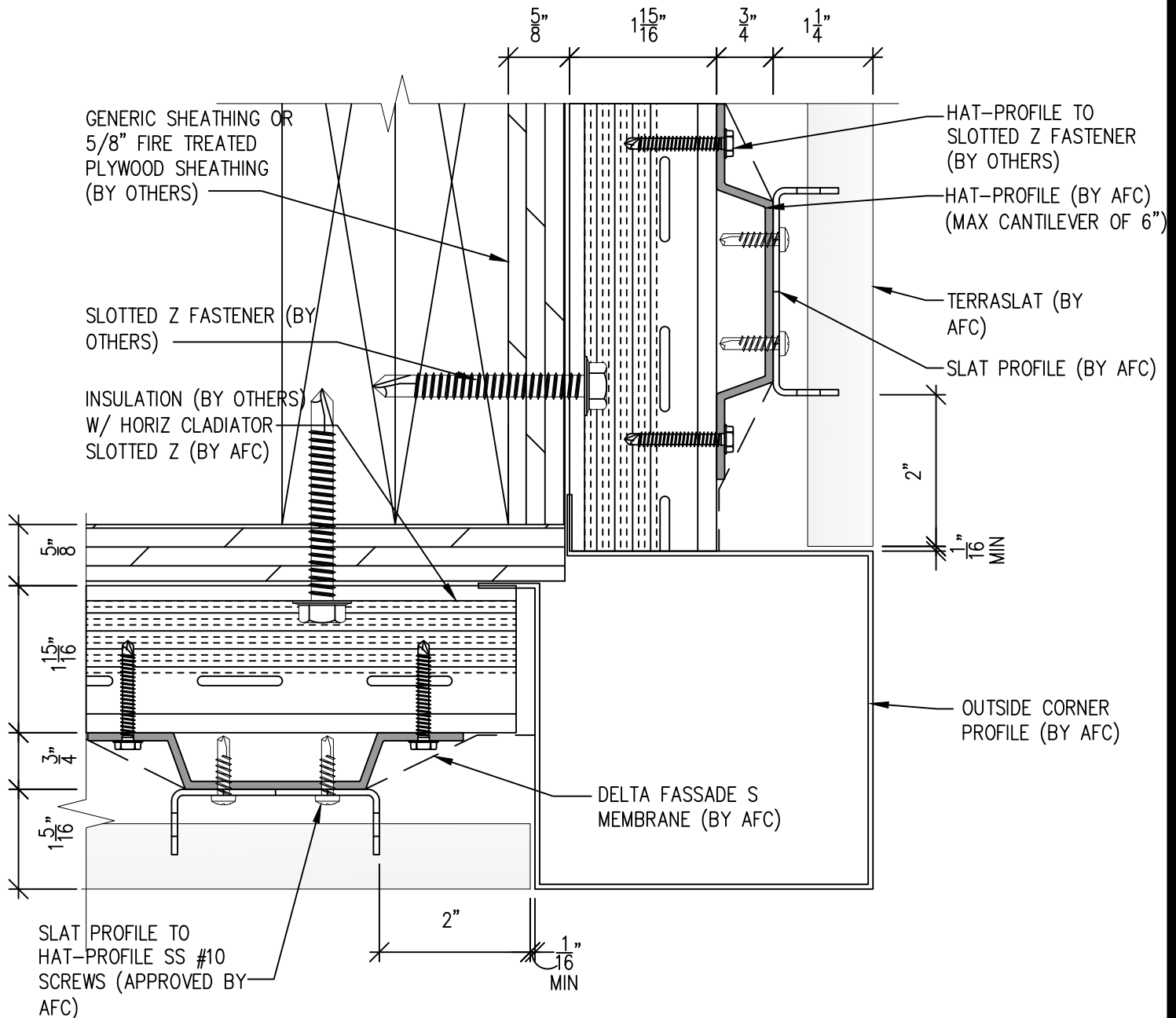
(303) 972-5107
6901 S Pierce St #180
Littleton, CO 80128

www.americanfibercement.com

Ref.:
Slat Edge @
Butt Joint

Date: 04/2024

TerraSlat Detail Set-Two Layer Horizontal Layout



SCALE: 6"=1'-0"

NOTES:

- PANEL VERTICAL AND HORIZONTAL JOINT SPACING SHOULD BE 3/8" TYPICAL.



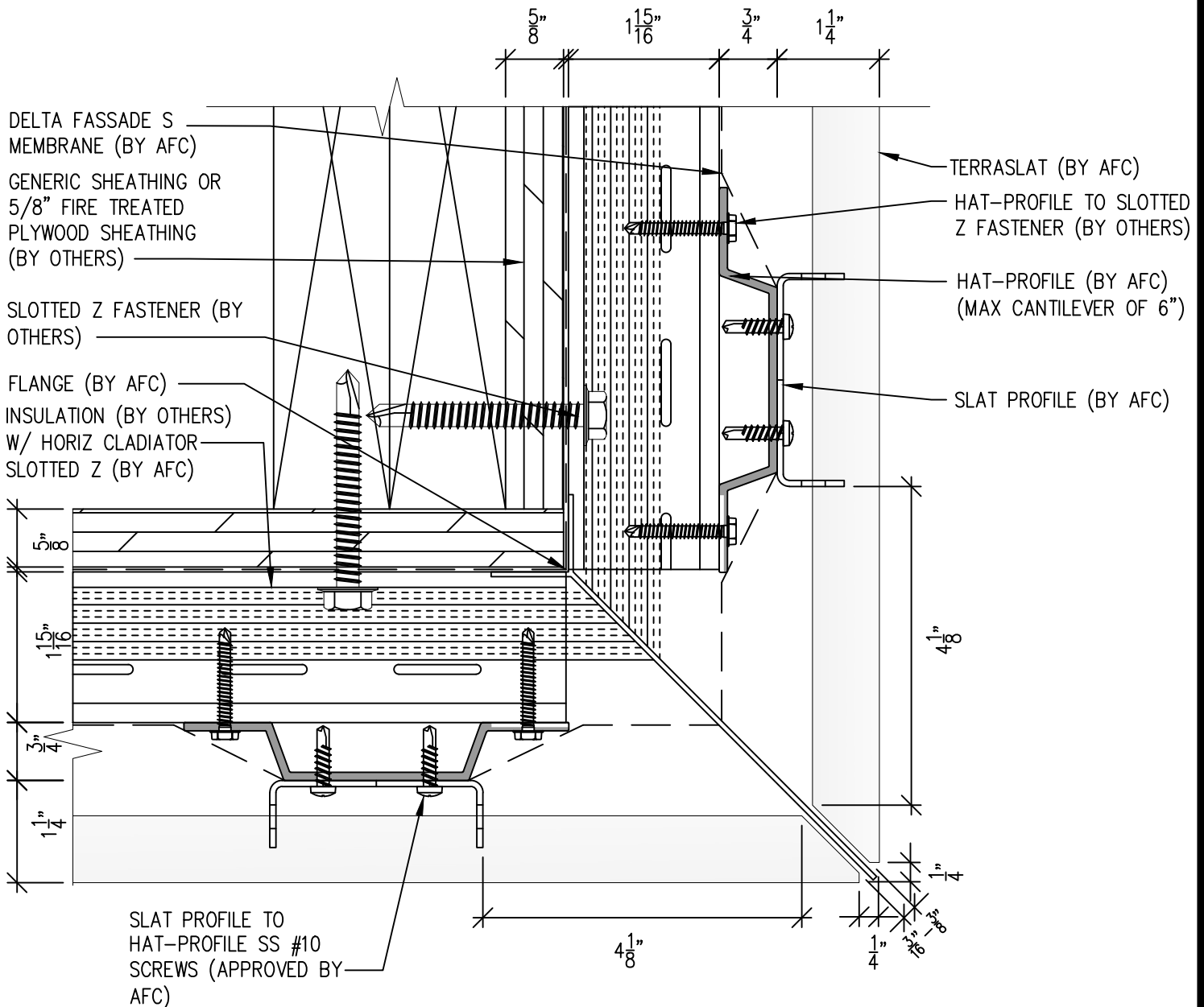
(303) 972-5107
6901 S Pierce St #180
Littleton, CO 80128

www.americanfibercement.com

Ref.:
Slat @
Outside Corner

Date: 04/2024

TerraSlat Detail Set-Two Layer Horizontal Layout



SCALE: 6"=1'-0"

NOTES:

1. PANEL VERTICAL AND HORIZONTAL JOINT SPACING SHOULD BE 3/8" TYPICAL.

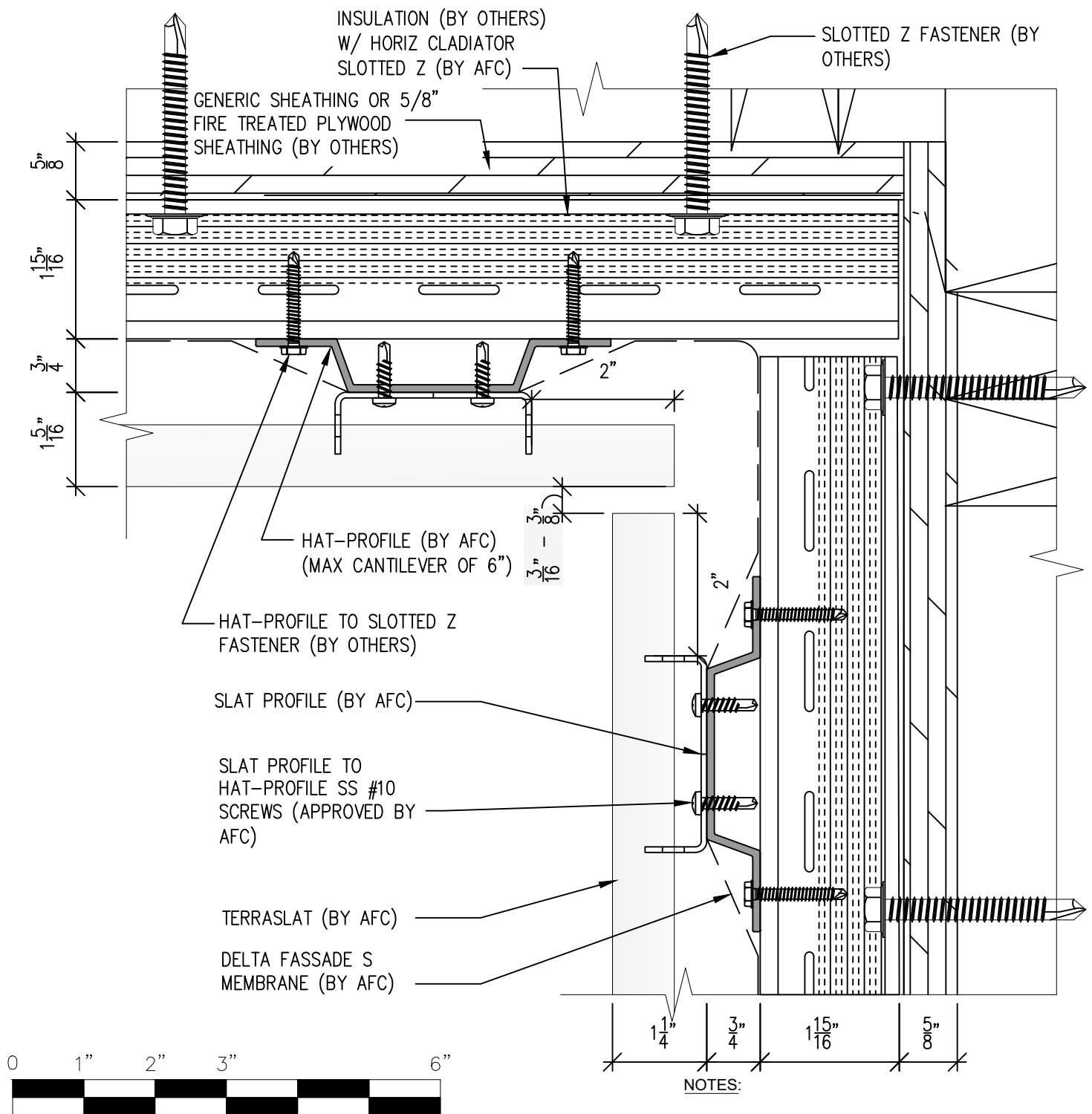


(303) 972-5107
6901 S Pierce St #180
Littleton, CO 80128
www.americanfibercement.com

Ref.:
Slats @
Outside Corner Alternate

Date: 04/2024

TerraSlat Detail Set-Two Layer Horizontal Layout



1. PANEL VERTICAL AND HORIZONTAL JOINT SPACING SHOULD BE 3/8" TYPICAL.



SCALE: 6"=1'-0"



(303) 972-5107
6901 S Pierce St #180
Littleton, CO 80128

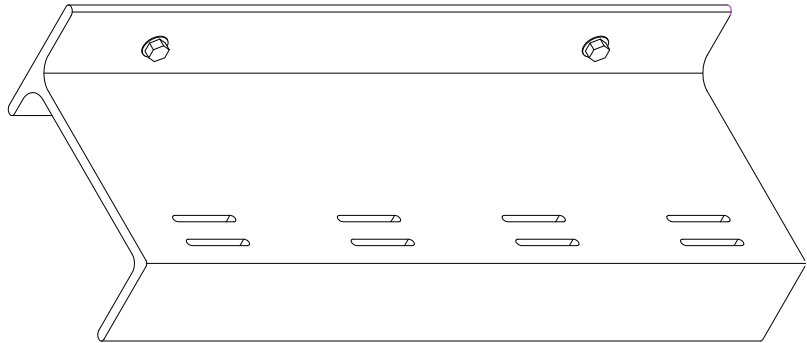
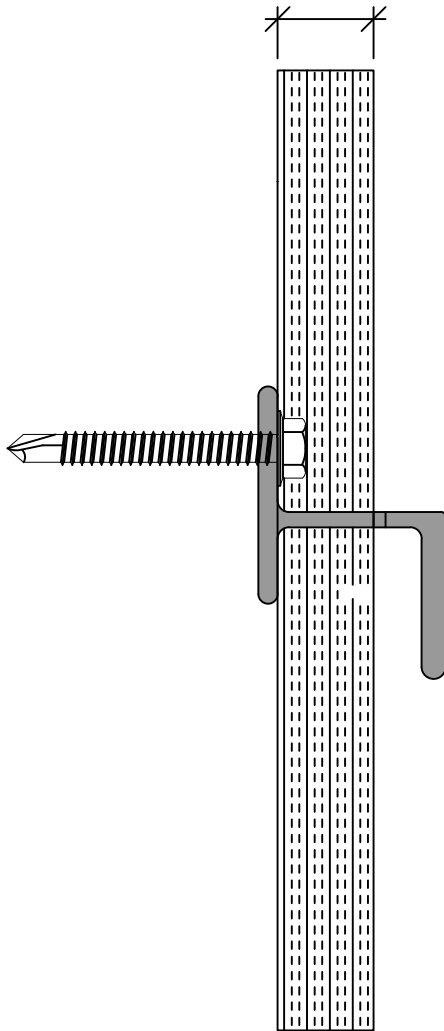
www.americanfibercement.com

Ref.:
Slat @
Inside Corner

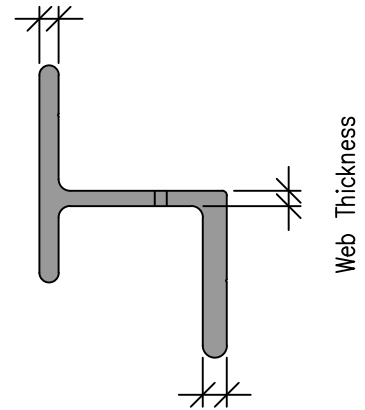
Date: 04/2024

CLADIATOR SLOTTED Z SPECIFICATIONS

1" – 5"
Insulation Thickness Range



Wall Flange Thickness



Screw Flange Thickness

1/4" (Stud) 1/4" (Concrete) X 1 OR 1-1/2 HWH SS SDS
FASTENER SIZE ADJUSTED BY STRUCTURAL ENGINEER



Insulation Depth	Screw Flange Thickness	Web Thickness	Wall Flange Thickness	Slotted Z Depth
1	0.25	0.16	0.2	1.95
1.5	0.25	0.16	0.2	2.45
2	0.25	0.16	0.2	3.45
2.5	0.25	0.16	0.2	3.95
3	0.25	0.16	0.2	4.45
3.5	0.25	0.16	0.2	4.95
4	0.25	0.16	0.2	5.5
4.5	0.25	0.16	0.2	6
5	0.25	0.25	0.25	6.5
5.5	0.25	0.25	0.25	6.5
Dimension are in inches				



SCALE: 6"=1'-0"



(303) 972-5107
6901 S Pierce St #180
Littleton, CO 80128
www.americanfibercement.com

Ref.:
Cladiator Slotted Z

Date: 04/2024