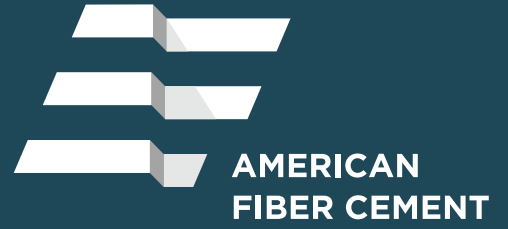


# TerraSlat Detail Set - Two Layer Vertical Layout

---



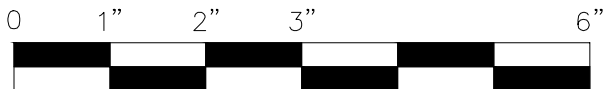
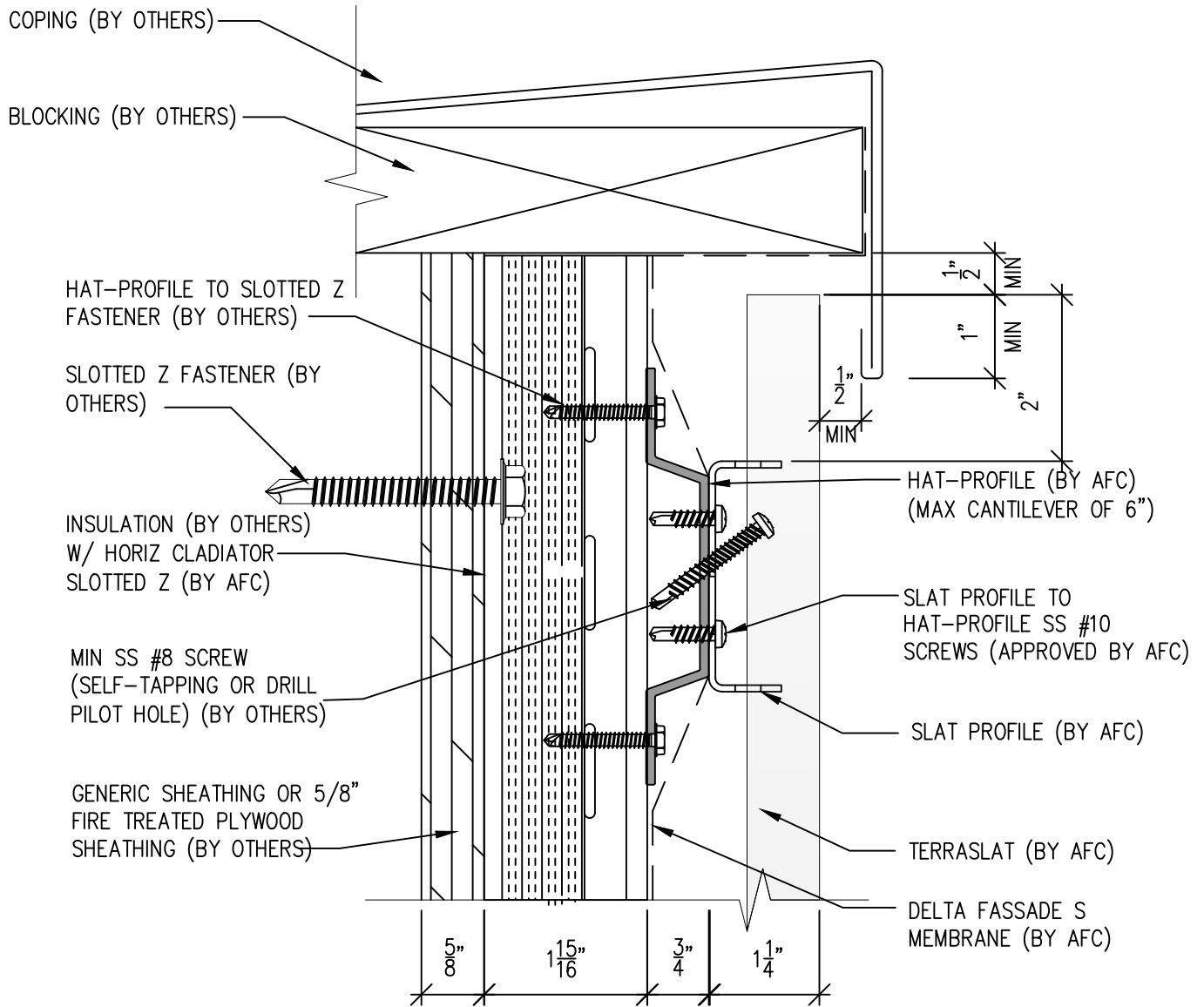
AFC TerraSlat by Tonality®



## Typical Details

Page 3:	Top of Slat @ Coping
Page 4:	Top of Slat @ Soffit
Page 5:	Top of Slat @ AFC TerraSlat Soffit
Page 6:	Horizontal Joint @ Continuous Substrate
Page 7:	Bottom of Slat @ Wall Base
Page 8:	Bottom of Slat @ Open Termination
Page 9:	Bottom of Slat @ Low Roof Flashing
Page 10:	Bottom of Slat @ Soffit
Page 11:	Bottom of Slat @ F.C.P Soffit
Page 12:	Soffit Termination @ Adjacent Material
Page 13:	Bottom of Slat @ Window Head
Page 14:	Top of Slat @ Window Sill
Page 15:	Slat Edge @ Window Jamb
Page 16:	Vertical Slat Joint
Page 17:	Slat Edge @ Window Jamb (Alternate)
Page 18:	Slat Edge @ Butt Joint
Page 19:	Slats @ Outside Corner
Page 20:	Slats @ Inside Corner
Page 21:	Cladiator Slotted Z

# TerraSlat Detail Set-Two Layer Vertical Layout



SCALE: 6"=1'-0"

## NOTES:

1. PANEL VERTICAL AND HORIZONTAL JOINT SPACING SHOULD BE 3/8" TYPICAL.

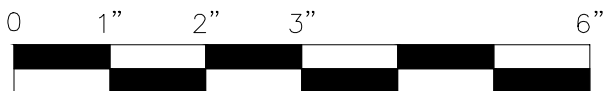
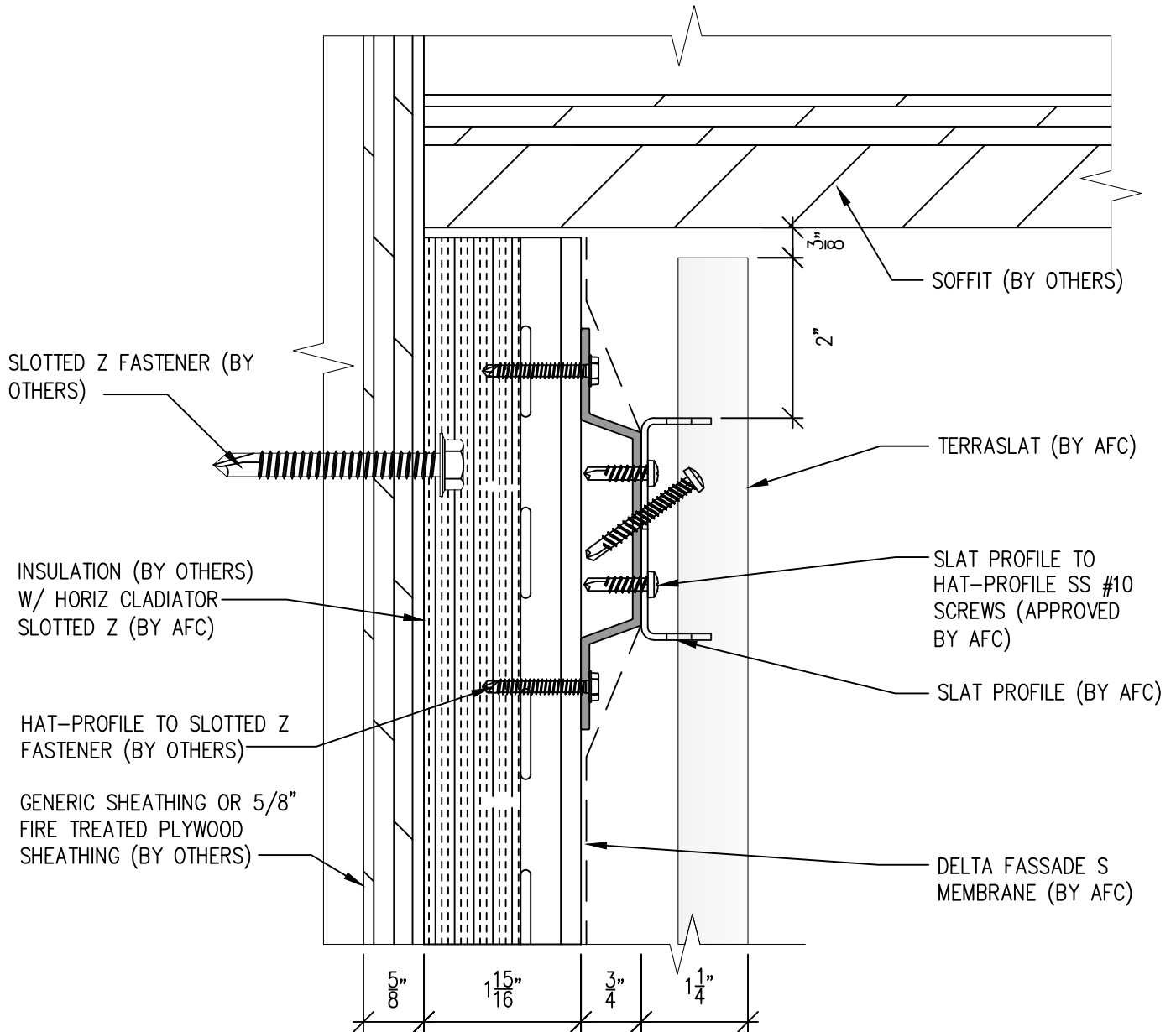


(303) 972-5107  
6901 S Pierce St #180  
Littleton, CO 80128  
[www.americanfibercement.com](http://www.americanfibercement.com)

Ref.:  
Top of Slat @ Coping

Date: 8/2024

# TerraSlat Detail Set-Two Layer Vertical Layout



SCALE: 6"=1'-0"

## NOTES:

1. PANEL VERTICAL AND HORIZONTAL JOINT SPACING SHOULD BE 3/8" TYPICAL.

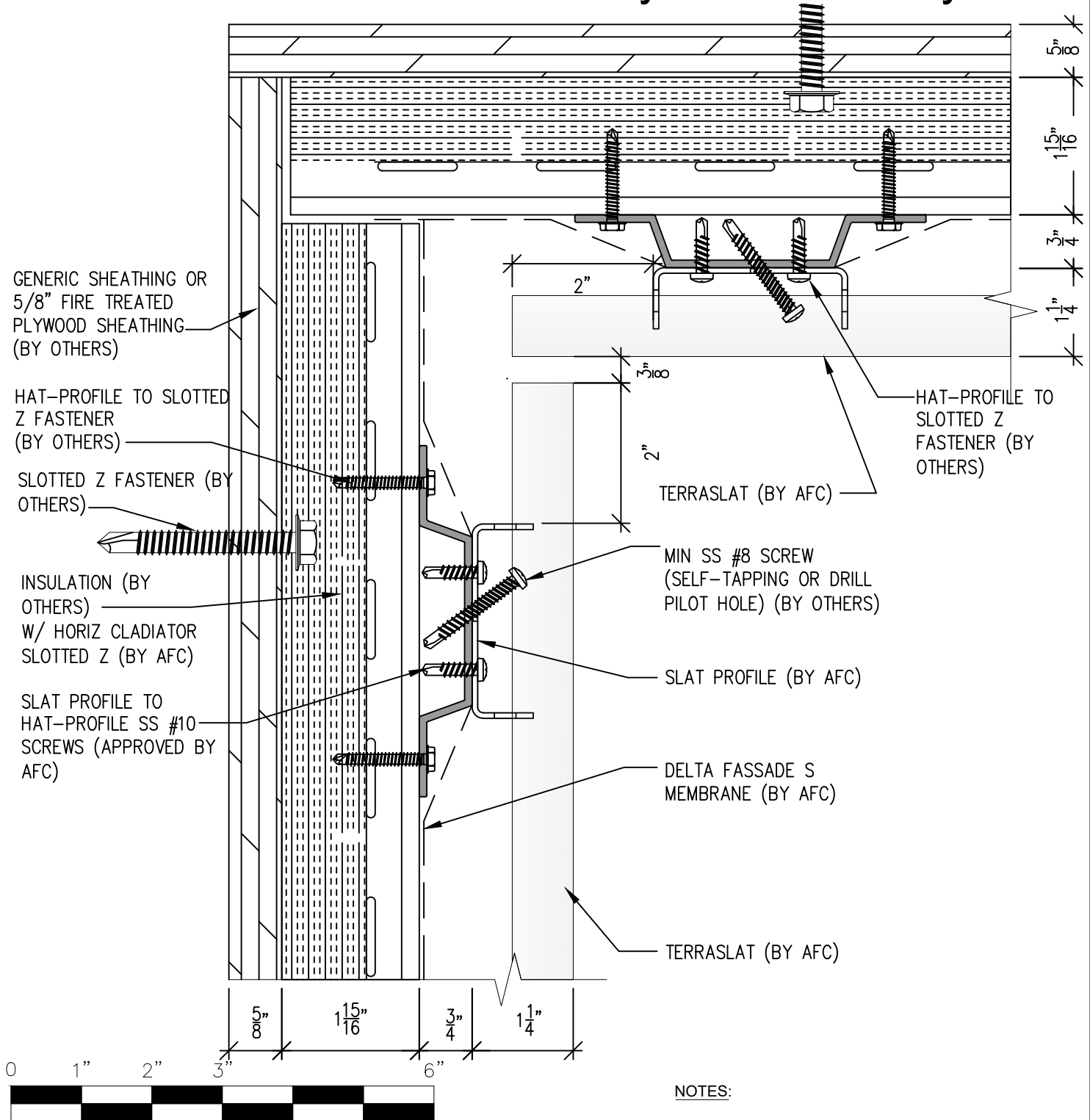


(303) 972-5107  
6901 S Pierce St #180  
Littleton, CO 80128  
[www.americanfibercement.com](http://www.americanfibercement.com)

Ref.:  
Top of Slat @  
Soffit

Date: 8/2024

# TerraSlat Detail Set-Two Layer Vertical Layout



## NOTES:

1. PANEL VERTICAL AND HORIZONTAL JOINT SPACING SHOULD BE 3/8" TYPICAL.



(303) 972-5107  
6901 S Pierce St #180  
Littleton, CO 80128

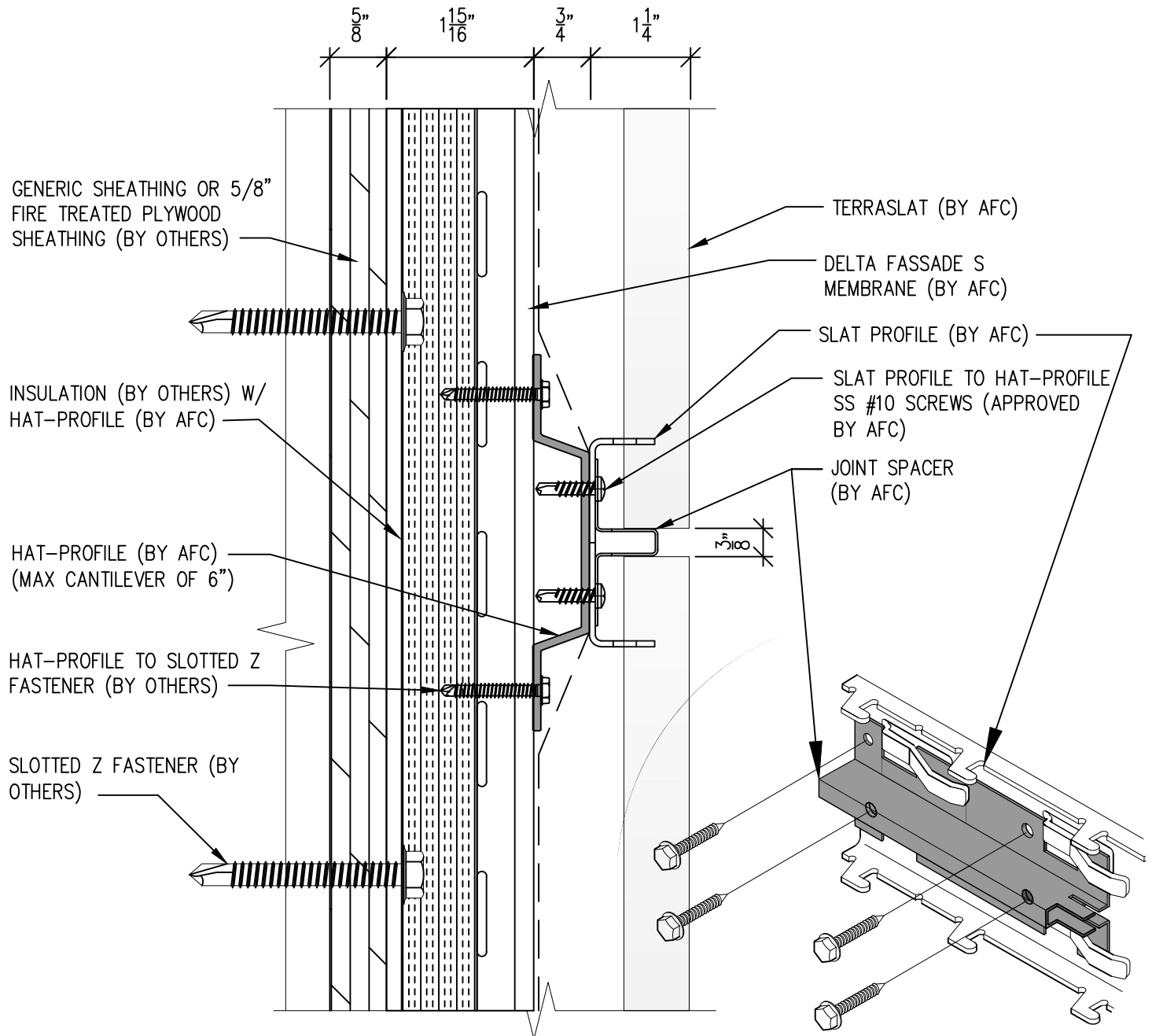
[www.americanfibercement.com](http://www.americanfibercement.com)

Ref.:

Top of Slat @  
AFC TerraSlat Soffit

Date: 8/2024

# TerraSlat Detail Set-Two Layer Vertical Layout



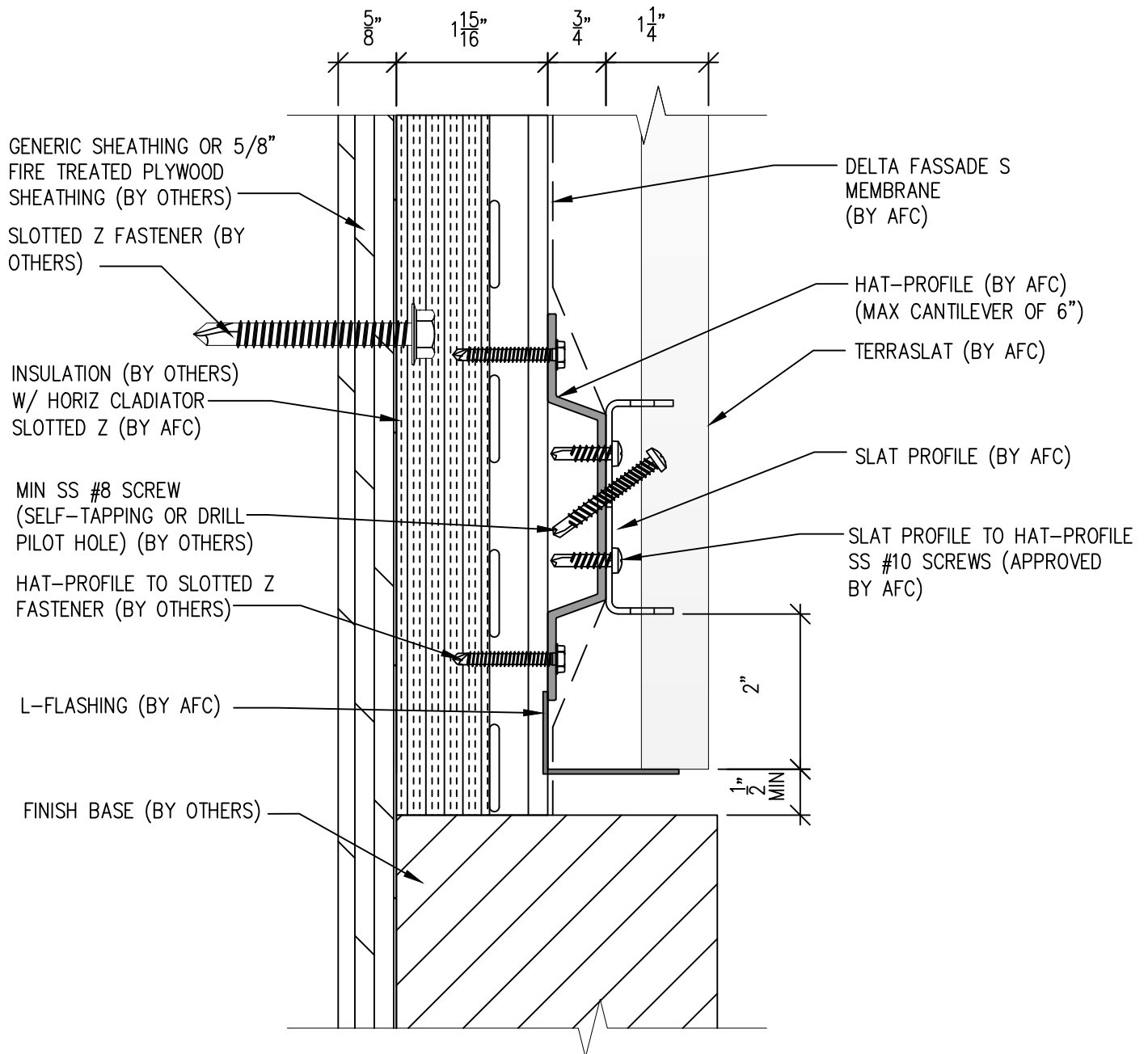
(303) 972-5107  
6901 S Pierce St #180  
Littleton, CO 80128

[www.americanfibercement.com](http://www.americanfibercement.com)

Ref.: Horizontal Joint @  
Continuous Substrate

Date: 8/2024

# TerraSlat Detail Set-Two Layer Vertical Layout



SCALE: 6"=1'-0"

## NOTES:

1. PANEL VERTICAL AND HORIZONTAL JOINT SPACING SHOULD BE 3/8" TYPICAL.



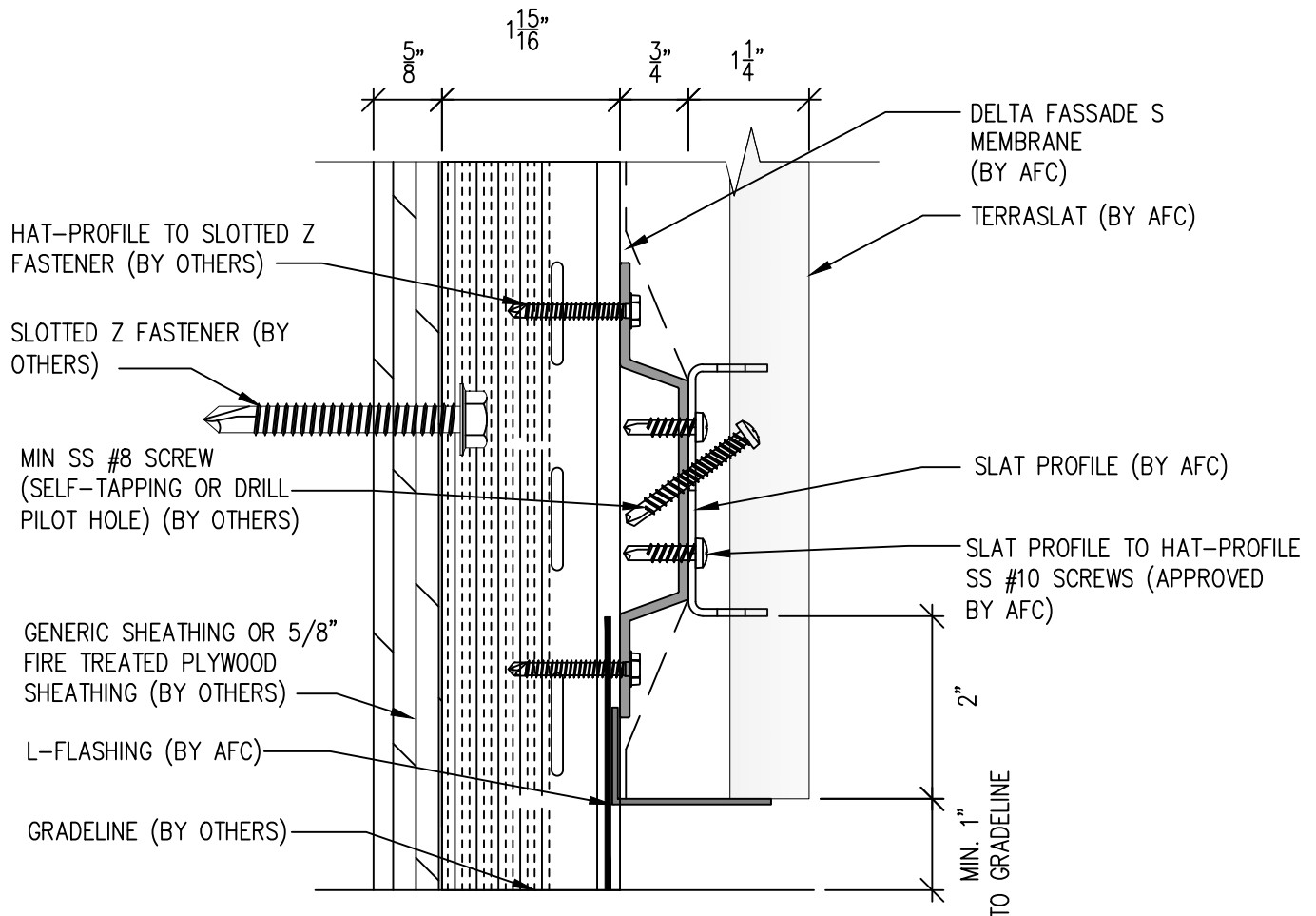
(303) 972-5107  
6901 S Pierce St #180  
Littleton, CO 80128

[www.americanfibercement.com](http://www.americanfibercement.com)

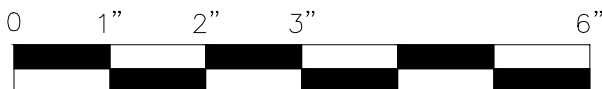
Ref.:  
Bottom of Slat @  
Wall Base

Date: 8/2024

# TerraSlat Detail Set-Two Layer Vertical Layout



**NOTE:**  
HOLD BASE OF TERRASLAT  
PANEL 6"-12" OFF GRADE  
BASED ON EXPECTED SNOW  
BUILDUP



SCALE: 6"=1'-0"

## NOTES:

1. PANEL VERTICAL AND HORIZONTAL JOINT SPACING SHOULD BE 3/8" TYPICAL.



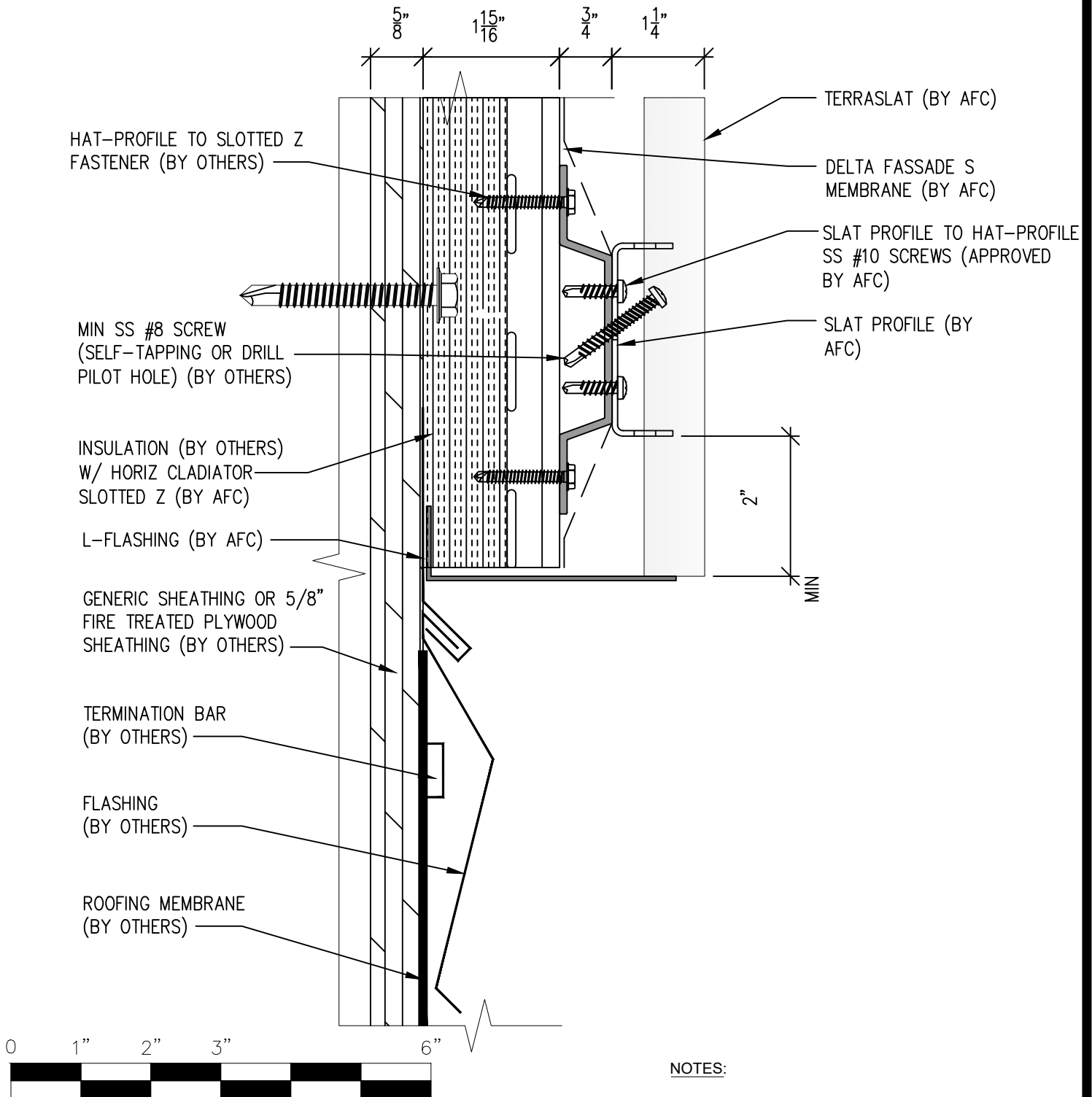
(303) 972-5107  
6901 S Pierce St #180  
Littleton, CO 80128

[www.americanfibercement.com](http://www.americanfibercement.com)

Ref.:  
Bottom of Slat @  
Open Termination

Date: 8/2024

# TerraSlat Detail Set-Two Layer Vertical Layout



## NOTES:

1. PANEL VERTICAL AND HORIZONTAL JOINT SPACING SHOULD BE 3/8" TYPICAL.

SCALE: 6"=1'-0"



(303) 972-5107  
6901 S Pierce St #180  
Littleton, CO 80128

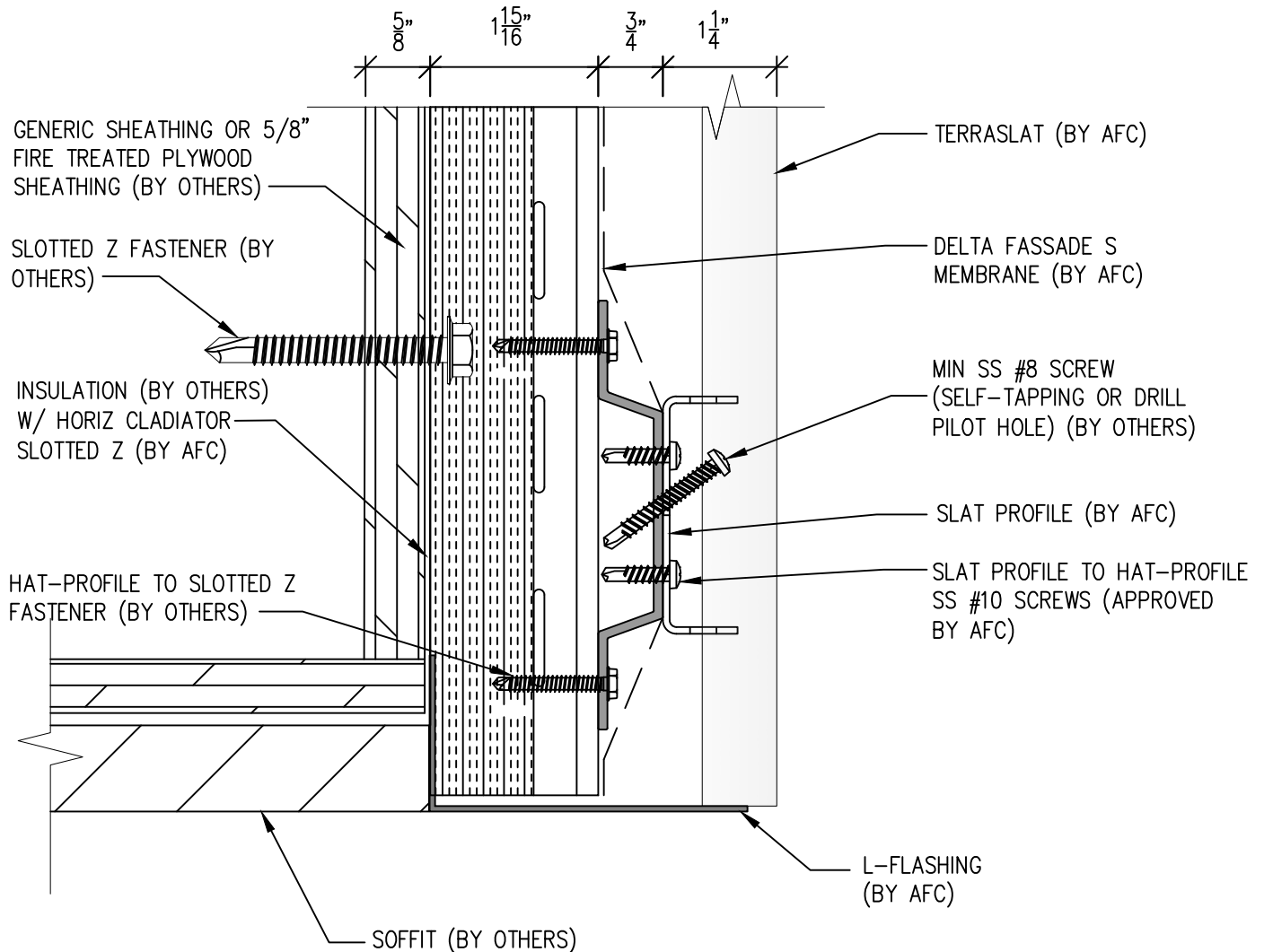
[www.americanfibercement.com](http://www.americanfibercement.com)

Ref.:

Bottom of Slat @  
Low Roof Flashing

Date: 8/2024

# TerraSlat Detail Set-Two Layer Vertical Layout



SCALE: 6"=1'-0"

## NOTES:

1. PANEL VERTICAL AND HORIZONTAL JOINT SPACING SHOULD BE 3/8" TYPICAL.



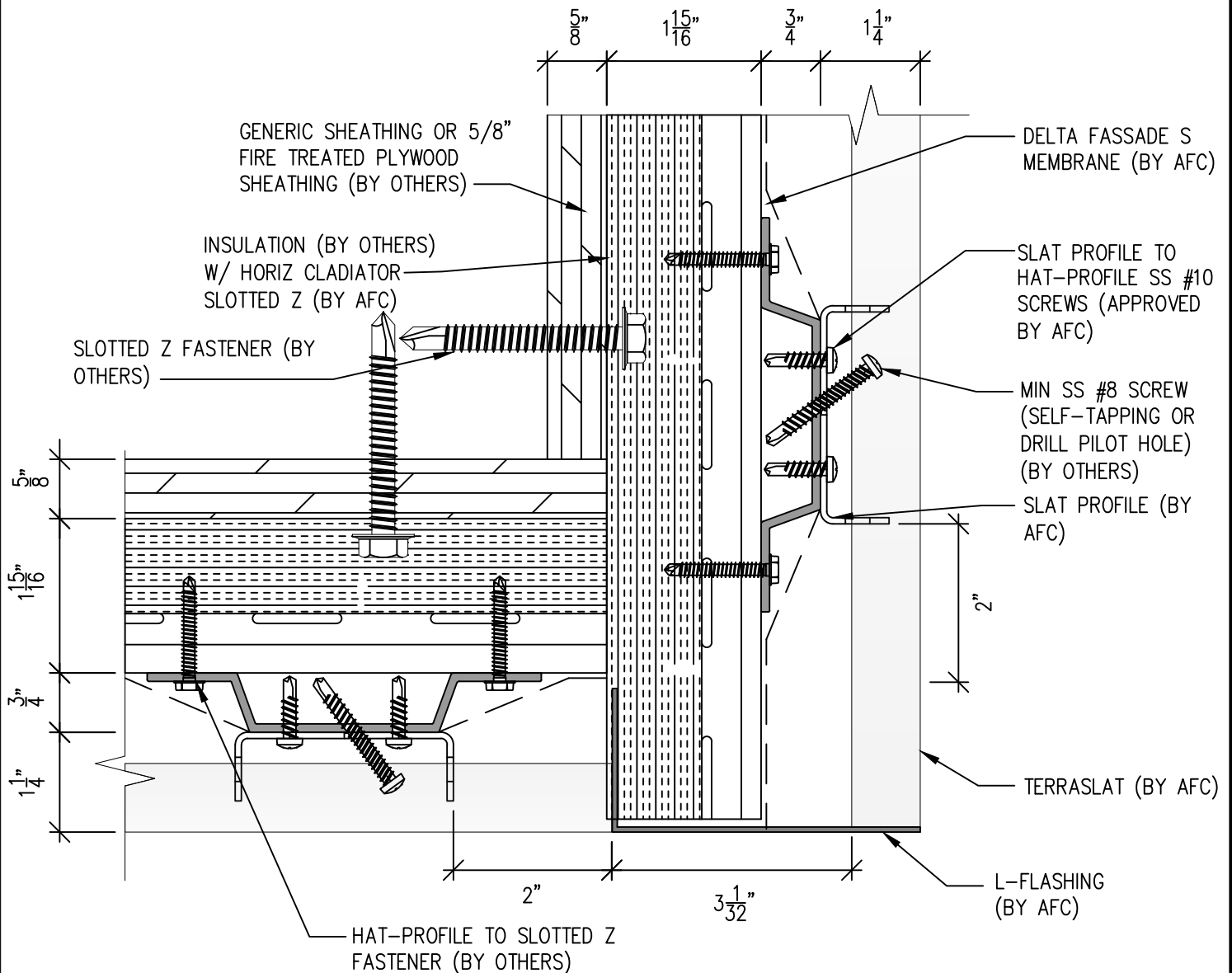
(303) 972-5107  
6901 S Pierce St #180  
Littleton, CO 80128

[www.americanfibercement.com](http://www.americanfibercement.com)

Ref.:  
Bottom of Slat @  
Soffit

Date: 8/2024

# TerraSlat Detail Set-Two Layer Vertical Layout



SCALE: 6"=1'-0"

## NOTES:

1. PANEL VERTICAL AND HORIZONTAL JOINT SPACING SHOULD BE 3/8" TYPICAL.

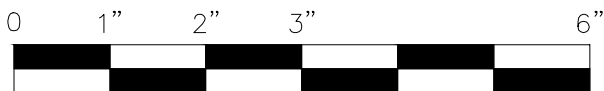
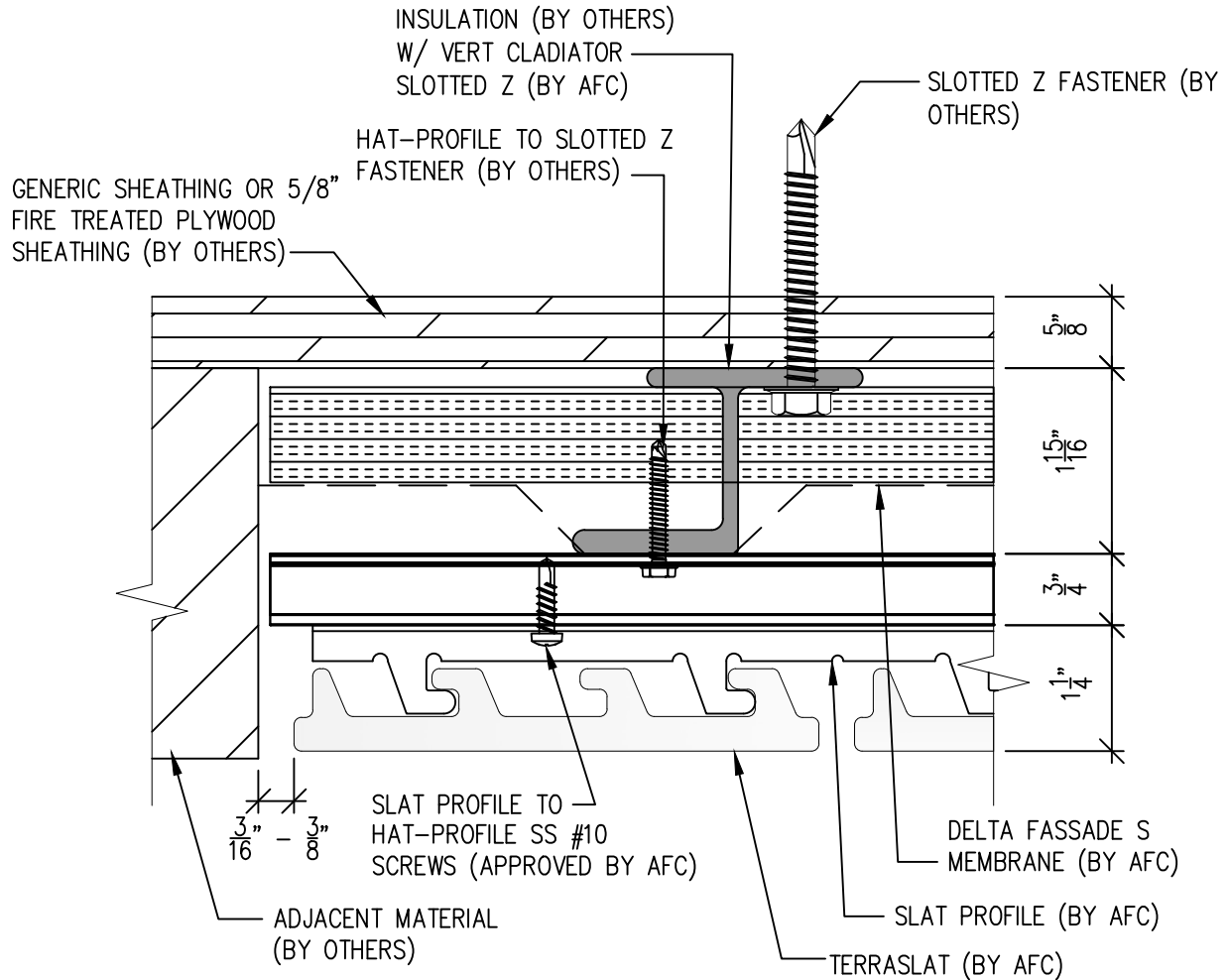


(303) 972-5107  
6901 S Pierce St #180  
Littleton, CO 80128  
[www.americanfibercement.com](http://www.americanfibercement.com)

Ref.:  
Bottom of Slat @  
F.C.P Soffit

Date: 8/2024

# TerraSlat Detail Set-Two Layer Vertical Layout



SCALE: 6"=1'-0"

## NOTES:

1. PANEL VERTICAL AND HORIZONTAL JOINT SPACING SHOULD BE 3/8" TYPICAL.

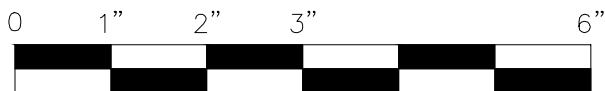
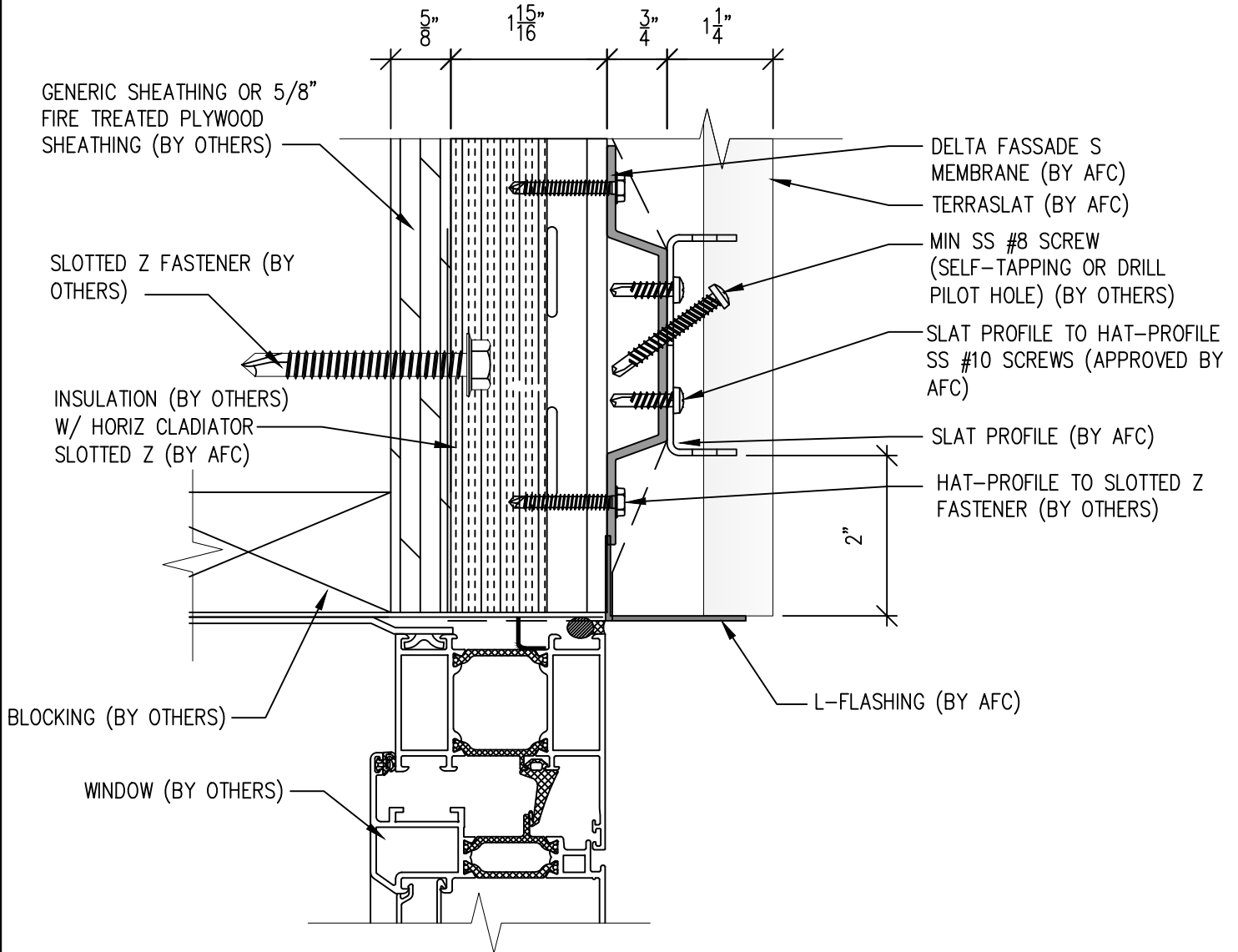


(303) 972-5107  
6901 S Pierce St #180  
Littleton, CO 80128  
[www.americanfibercement.com](http://www.americanfibercement.com)

Ref.:  
Soffit Termination @  
Adjacent Material

Date: 8/2024

# TerraSlat Detail Set-Two Layer Vertical Layout



SCALE: 6"=1'-0"

## NOTES:

1. PANEL VERTICAL AND HORIZONTAL JOINT SPACING SHOULD BE 3/8" TYPICAL.

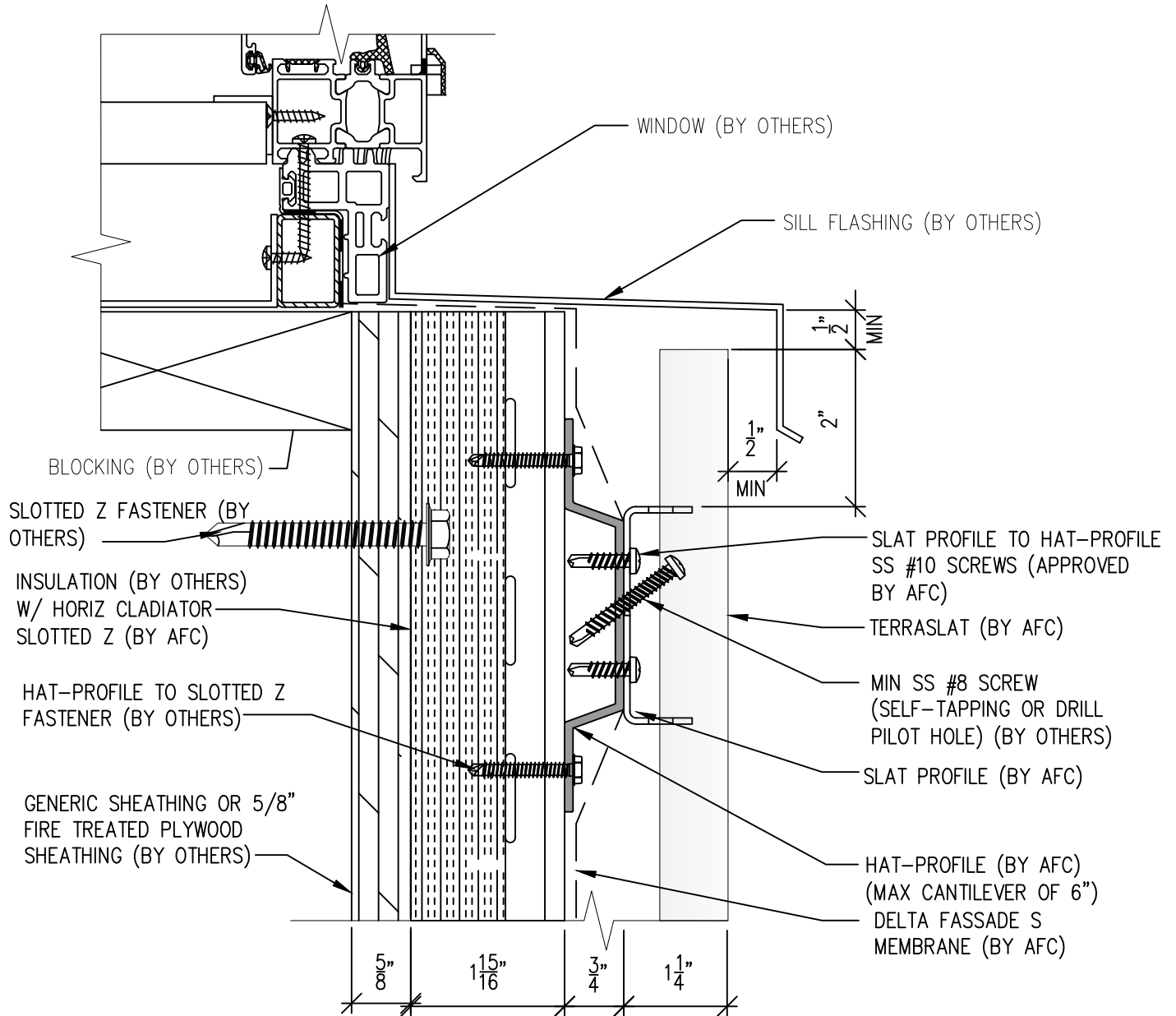


(303) 972-5107  
6901 S Pierce St #180  
Littleton, CO 80128  
[www.americanfibercement.com](http://www.americanfibercement.com)

Ref.:  
Bottom of Slat @  
Window Head

Date: 8/2024

# TerraSlat Detail Set-Two Layer Vertical Layout



SCALE: 6"=1'-0"

## NOTES:

1. PANEL VERTICAL AND HORIZONTAL JOINT SPACING SHOULD BE 3/8" TYPICAL.



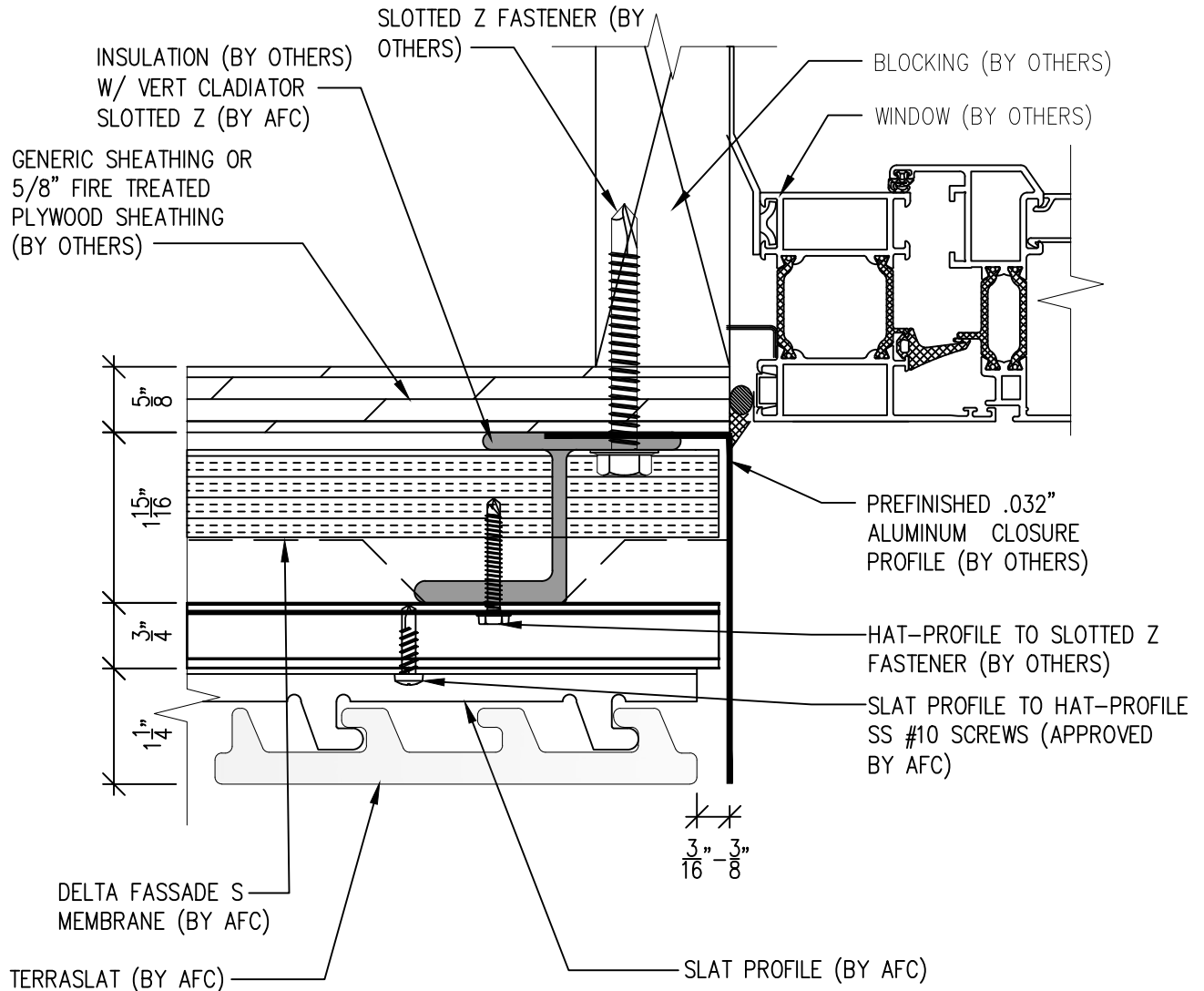
(303) 972-5107  
6901 S Pierce St #180  
Littleton, CO 80128

[www.americanfibercement.com](http://www.americanfibercement.com)

Ref.:  
Top of Slat @  
Window Sill

Date: 8/2024

# TerraSlat Detail Set-Two Layer Vertical Layout



SCALE: 6"=1'-0"

## NOTES:

1. PANEL VERTICAL AND HORIZONTAL JOINT SPACING SHOULD BE 3/8" TYPICAL.



(303) 972-5107  
6901 S Pierce St #180  
Littleton, CO 80128

[www.americanfibercement.com](http://www.americanfibercement.com)

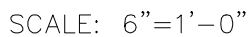
Ref.:  
Slat Edge @  
Window Jamb

Date: 8/2024

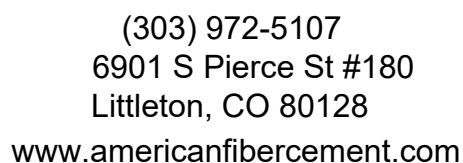
The diagram illustrates a cross-section of a building facade assembly. The components and dimensions are as follows:

- Top Layer:** GENERIC SHEATHING OR 5/8" FIRE TREATED PLYWOOD SHEATHING (BY OTHERS). Thickness: 5/8".
- Insulation:** INSULATION (BY OTHERS) W/ HORIZ CLADIATOR SLOTTED Z (BY AFC). Thickness: 1 15/16".
- Fasteners:** SLOTTED Z FASTENER (BY OTHERS) and HAT-PROFILE TO SLOTTED Z FASTENER (BY OTHERS).
- Delta Fassade S Membrane:** DELTA FASSADE S MEMBRANE (BY AFC). Thickness: 3/8".
- Terraslat:** TERRASLAT (BY AFC). Thickness: 1 1/4".
- Slats:** SLAT PROFILE (BY AFC). Thickness: 1 15/16".
- Fasteners:** SLAT PROFILE TO HAT-PROFILE SS #10 SCREWS (APPROVED BY AFC).
- Hat-Profile:** HAT-PROFILE (BY AFC) (MAX CANTILEVER OF 6").

**NOTE:**  
 OPTION 1 DETAIL IS RECOMMENDED FOR VERTICAL PANEL JOINTS.



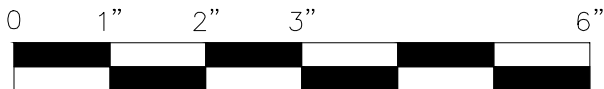
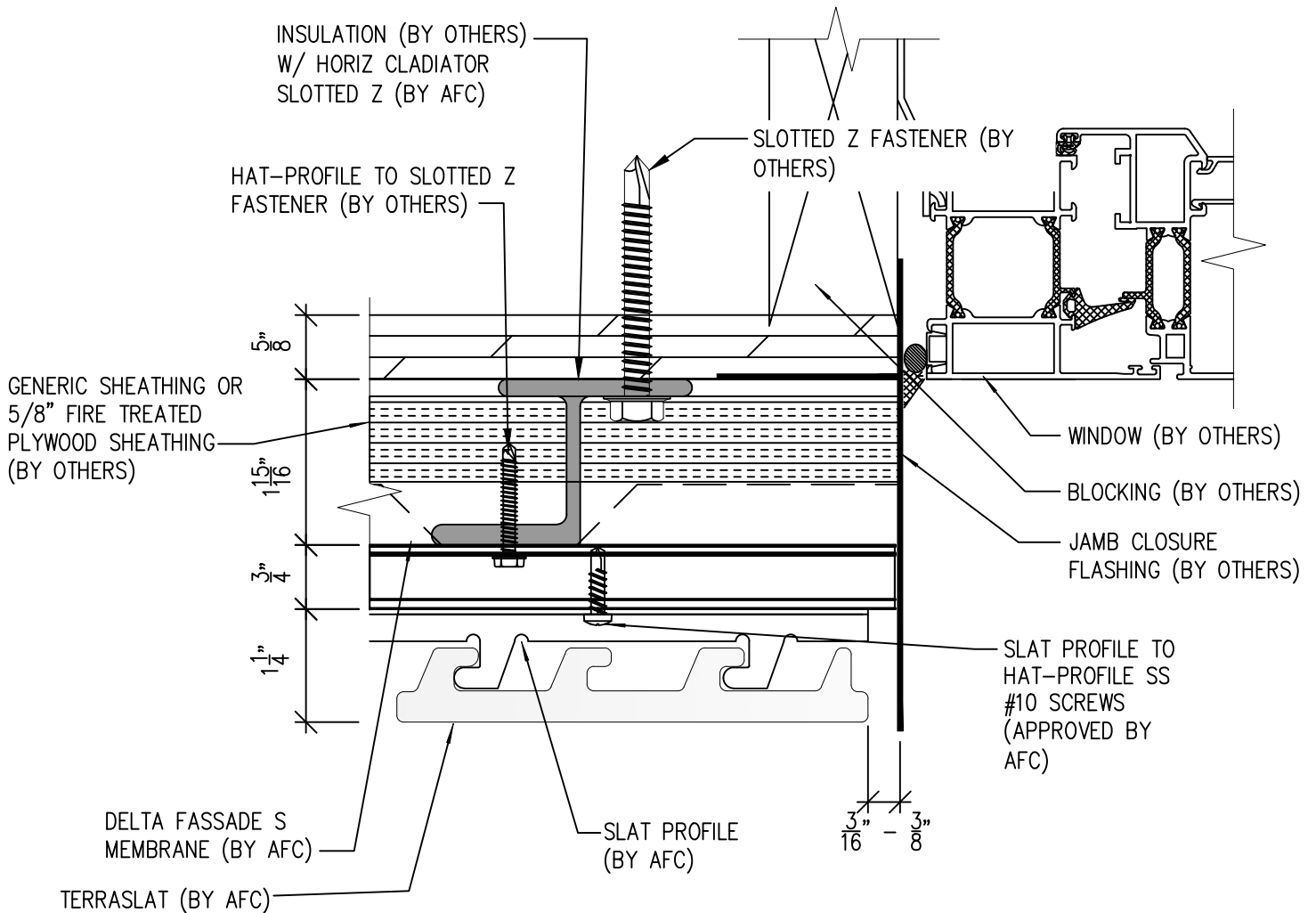
1. PANEL VERTICAL AND HORIZONTAL JOINT SPACING SHOULD BE 3/8" TYPICAL.



Ref.:  
Vertical Slat Joint

Date: 8/2024

# TerraSlat Detail Set-Two Layer Vertical Layout



SCALE: 6"=1'-0"

## NOTES:

1. PANEL VERTICAL AND HORIZONTAL JOINT SPACING SHOULD BE 3/8" TYPICAL.



(303) 972-5107  
6901 S Pierce St #180  
Littleton, CO 80128

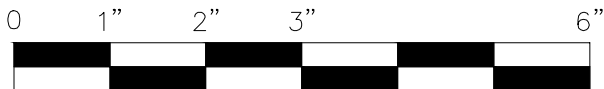
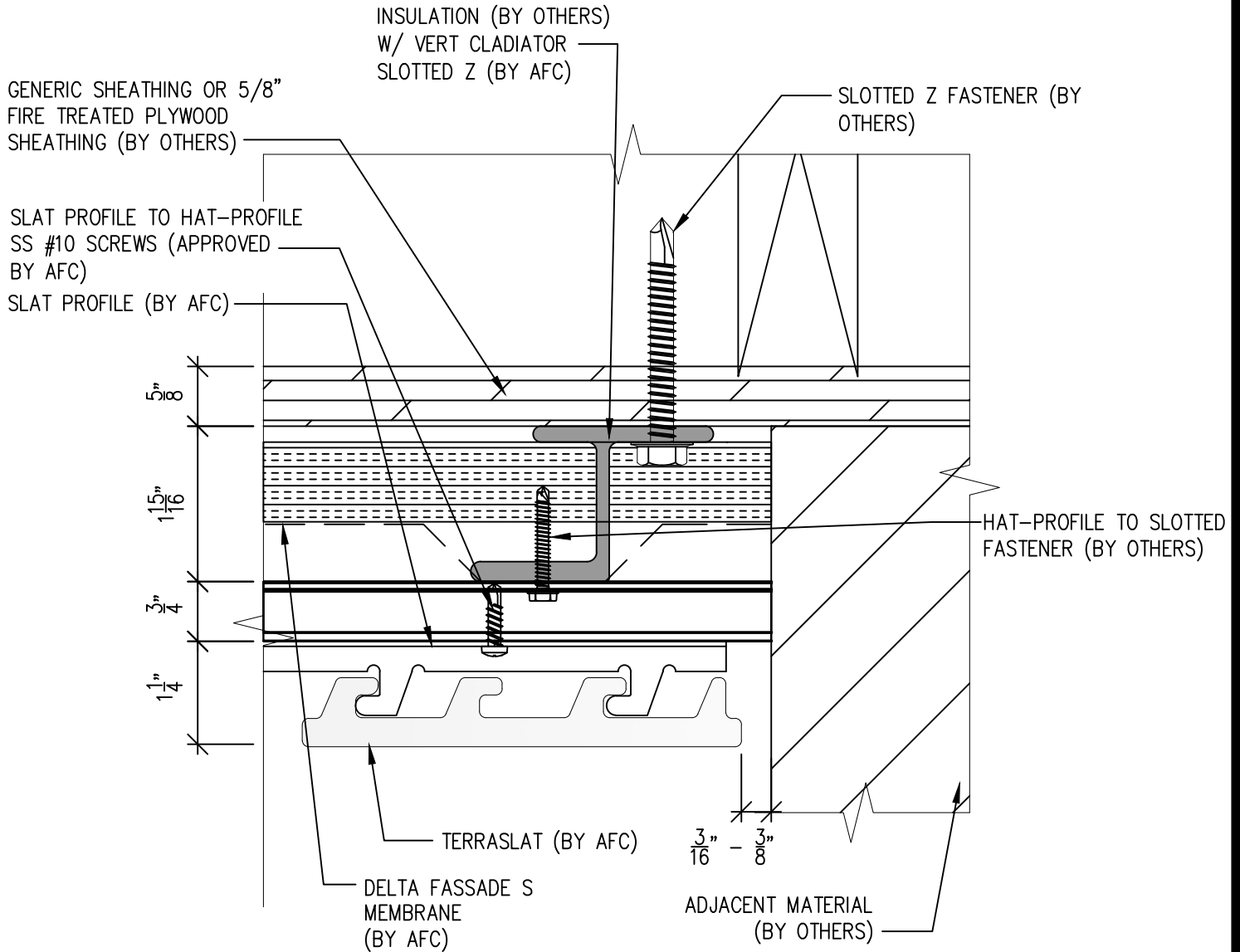
[www.americanfibercement.com](http://www.americanfibercement.com)

Ref.:

Slat Edge @ Window Jamb  
Alternate

Date: 8/2024

# TerraSlat Detail Set-Two Layer Vertical Layout



SCALE: 6"=1'-0"

## NOTES:

1. PANEL VERTICAL AND HORIZONTAL JOINT SPACING SHOULD BE 3/8" TYPICAL.

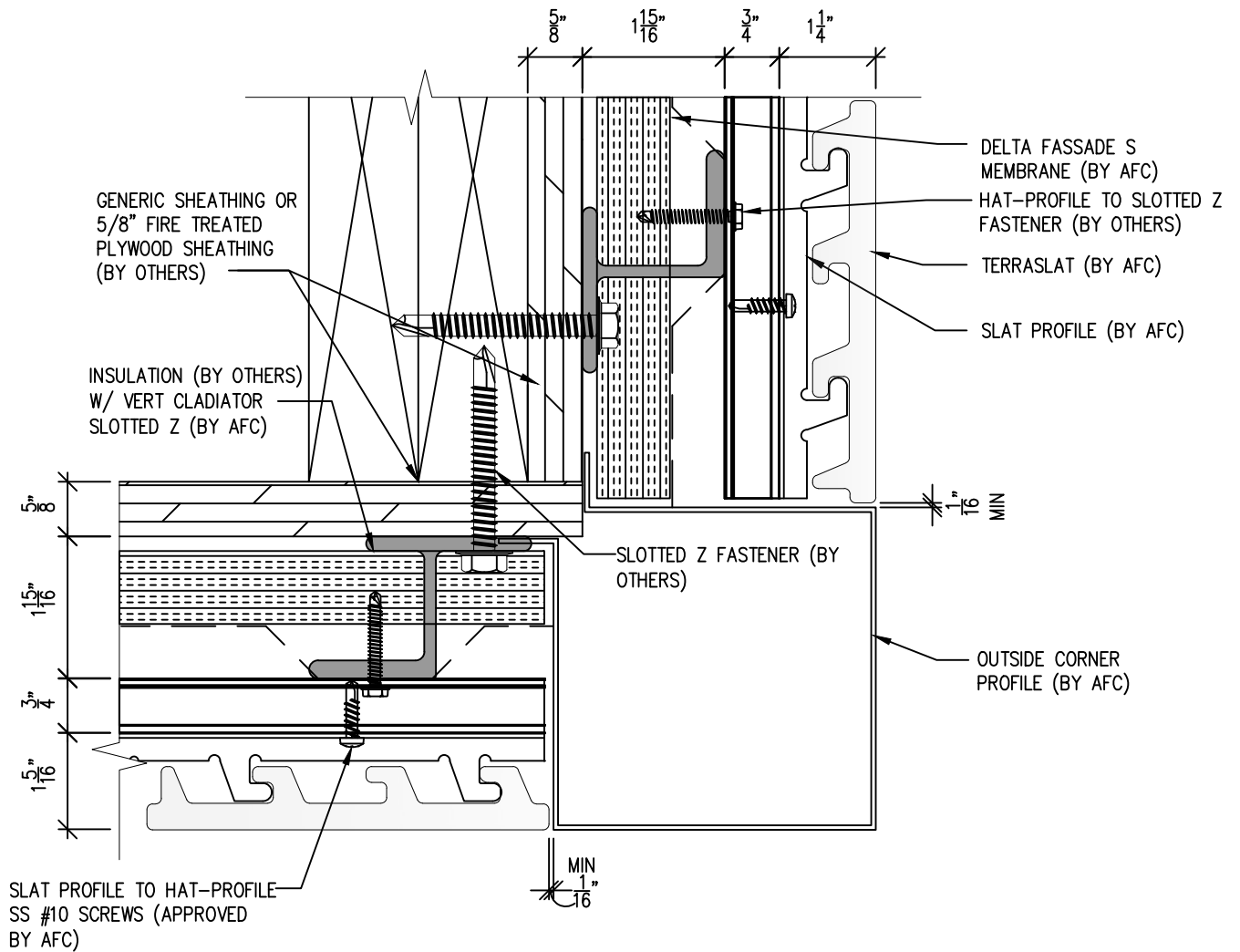


(303) 972-5107  
6901 S Pierce St #180  
Littleton, CO 80128  
[www.americanfibercement.com](http://www.americanfibercement.com)

Ref.:  
Slat Edge @  
Butt Joint

Date: 8/2024

# TerraSlat Detail Set-Two Layer Vertical Layout



SCALE: 6"=1'-0"

## NOTES:

1. PANEL VERTICAL AND HORIZONTAL JOINT SPACING SHOULD BE 3/8" TYPICAL.

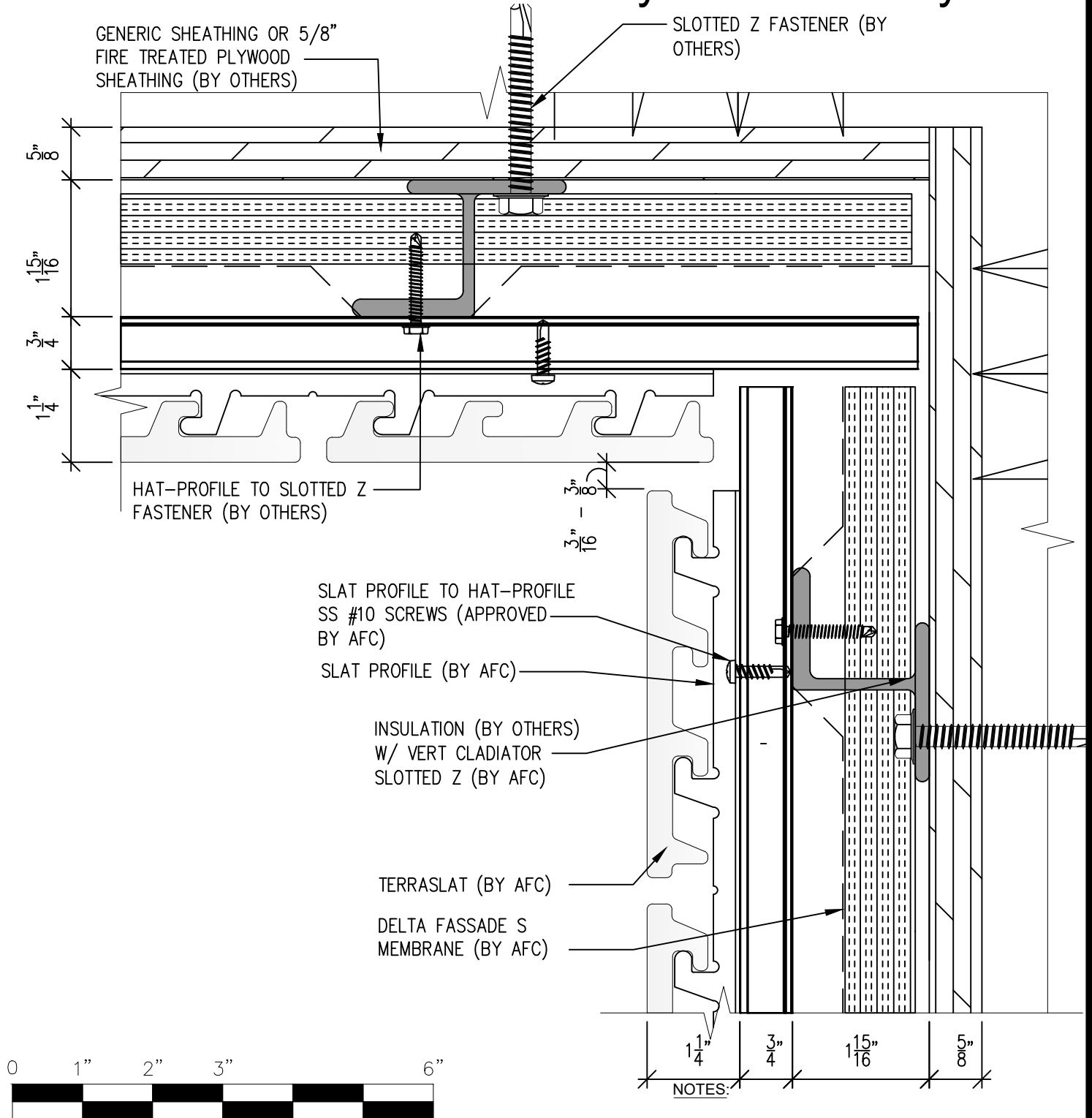


(303) 972-5107  
6901 S Pierce St #180  
Littleton, CO 80128  
[www.americanfibercement.com](http://www.americanfibercement.com)

Ref.:  
Slats @  
Outside Corner

Date: 8/2024

# TerraSlat Detail Set-Two Layer Vertical Layout



1. PANEL VERTICAL AND HORIZONTAL JOINT SPACING SHOULD BE 3/8" TYPICAL.

SCALE: 6"=1'-0"

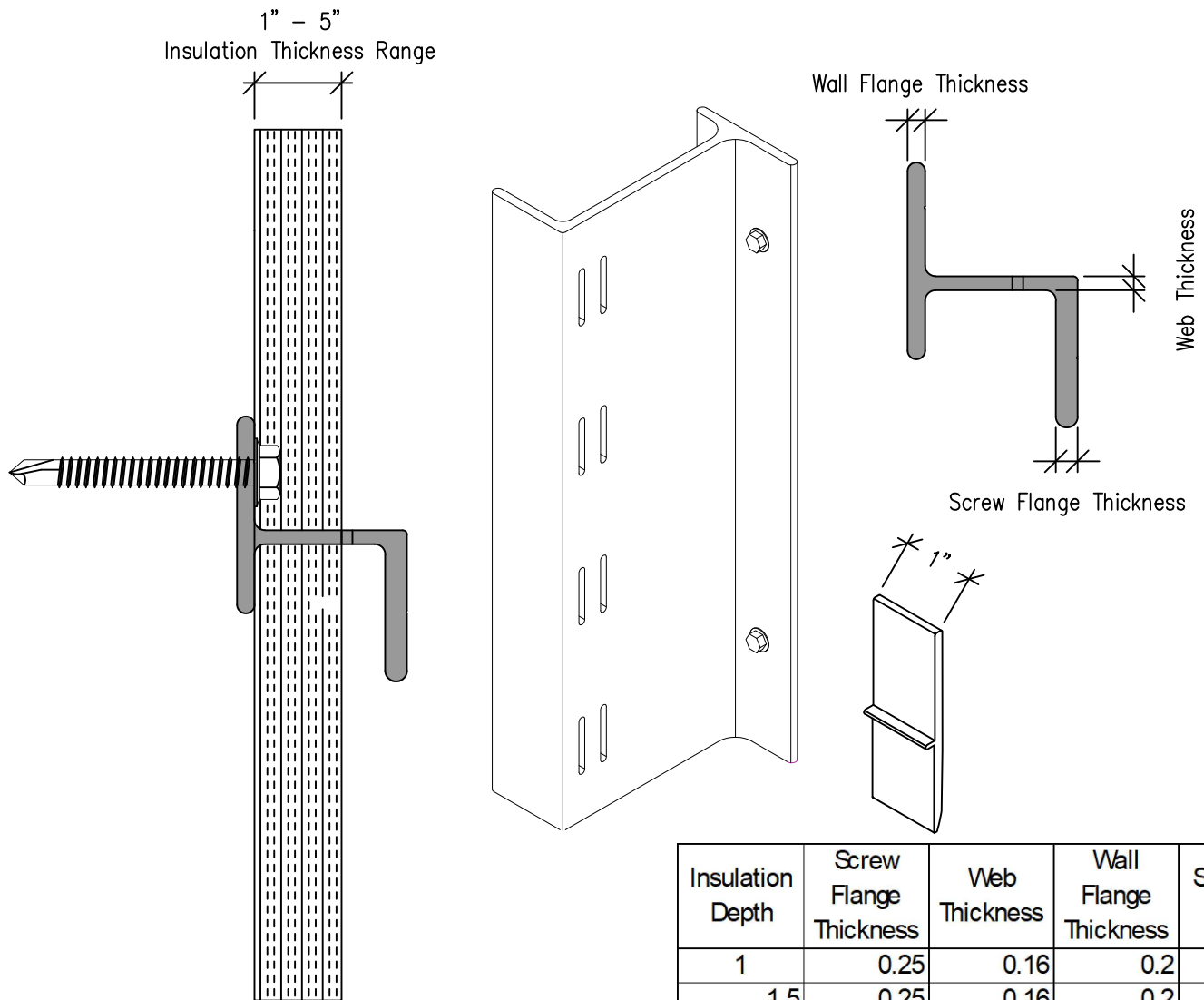


(303) 972-5107  
6901 S Pierce St #180  
Littleton, CO 80128  
[www.americanfibercement.com](http://www.americanfibercement.com)

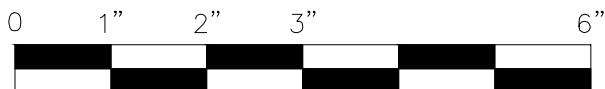
Ref.:  
Slats @  
Inside Corner

Date: 8/2024

# CLADIATOR SLOTTED Z SPECIFICATIONS



1/4" (Stud) 1/4" (Concrete) X 1 OR 1-1/2 HWH SS SDS  
FASTENER SIZE ADJUSTED BY STRUCTURAL ENGINEER



SCALE: 6"=1'-0"

Insulation Depth	Screw Flange Thickness	Web Thickness	Wall Flange Thickness	Slotted Z Depth
1	0.25	0.16	0.2	1.95
1.5	0.25	0.16	0.2	2.45
2	0.25	0.16	0.2	3.45
2.5	0.25	0.16	0.2	3.95
3	0.25	0.16	0.2	4.45
3.5	0.25	0.16	0.2	4.95
4	0.25	0.16	0.2	5.5
4.5	0.25	0.16	0.2	6
5	0.25	0.25	0.25	6.5
5.5	0.25	0.25	0.25	6.5

Dimension are in inches



(303) 972-5107  
6901 S Pierce St #180  
Littleton, CO 80128  
[www.americanfibercement.com](http://www.americanfibercement.com)

Ref.:  
Cladiator Slotted Z

Date: 8/2024