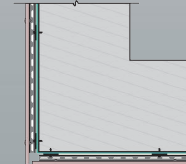
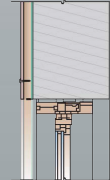
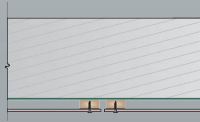
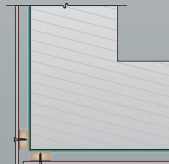
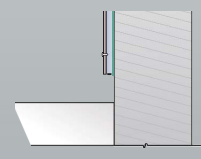
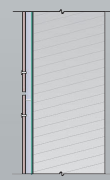
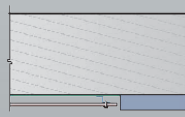
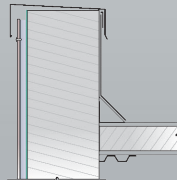
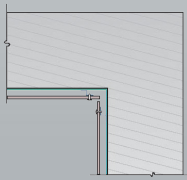
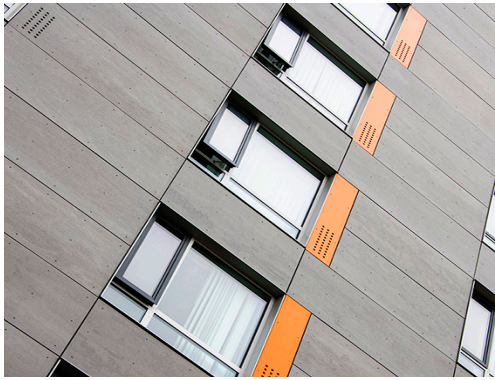


XKELEX X-Z19PF Aluminum Attachment System with Rivets





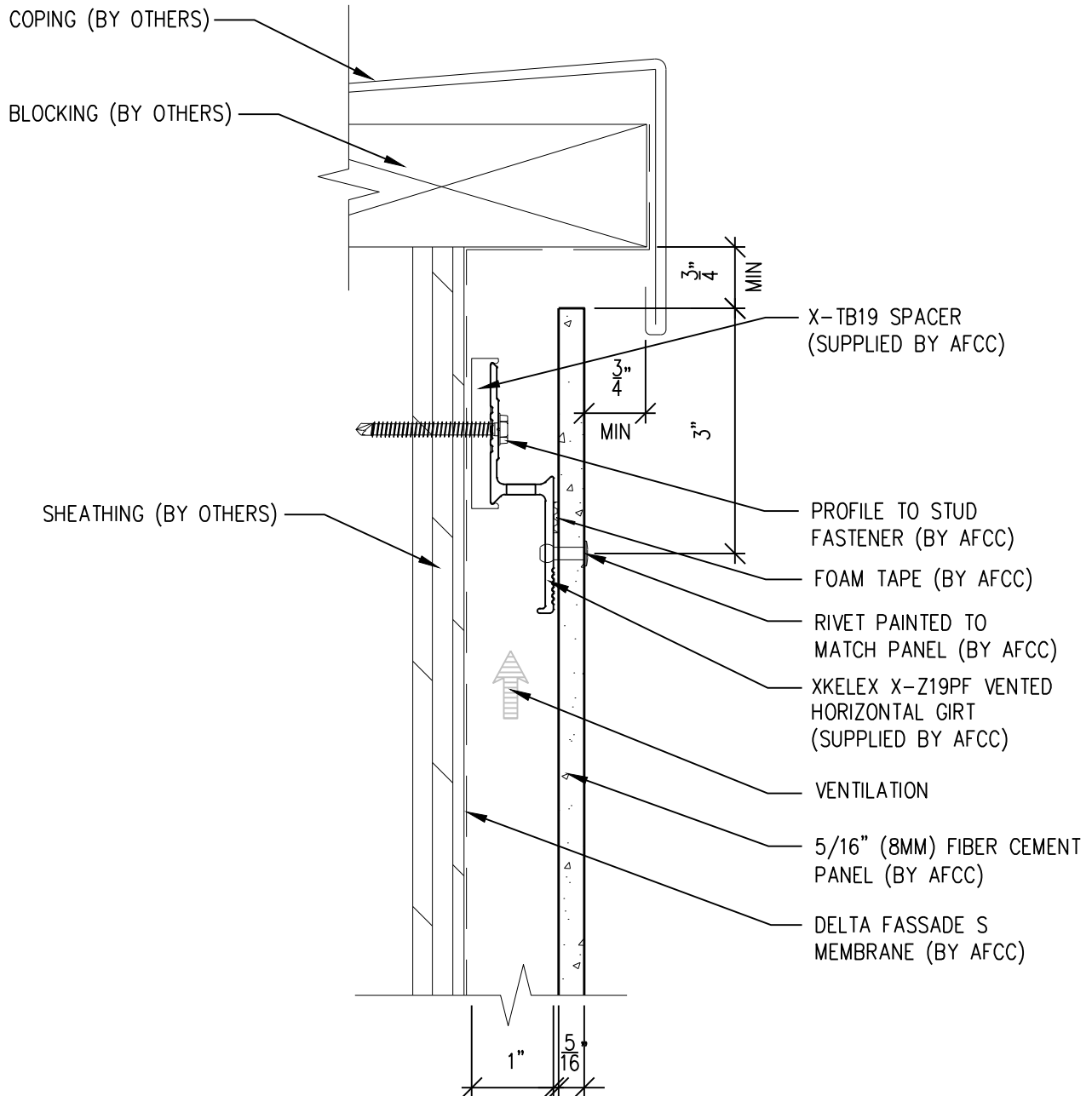
American Fiber Cement Corporation

XKELEX Typical Details

Page 1:	Top Panel @ Coping
Page 2:	Top Panel @ Soffit
Page 3:	Top Panel @ F.C.P Soffit
Page 4:	Horizontal Panel Joint
Page 5:	Bottom of Panel @ Wall Base
Page 6:	Bottom of Panel @ Open Termination
Page 7:	Bottom of Panel @ Low Roof Flashing
Page 8:	Bottom of Panel @ Soffit
Page 9:	Bottom of Panel @ Soffit (Alternate)
Page 10:	Bottom of Panel @ F.C.P Soffit
Page 11:	Bottom of Panel @ F.C.P Soffit (Alternate)
Page 12:	Soffit Termination @ Adjacent Material
Page 13:	Bottom of Panel @ Window Head
Page 14:	Bottom of Panel @ Window Head (Alternate)
Page 15:	Top of Panel @ Window Sill
Page 16:	Panel Edge @ Window Jam
Page 17:	Panel Edge @ Window Jam (Alternate)
Page 18:	Vertical Joint @ Continuous Substrate
Page 19:	Vertical Joint @ Break in Substrate
Page 20:	Not Permitted @ Break in Substrate
Page 21:	Panel Edge @ Butt Joint
Page 22:	Panels @ Outside Corner
Page 23:	Panels @ Inside Corner
Page 24:	Typical Fastener Layout

One-Layer Aluminum Attachment System

XKELEX X-Z19PF GIRT



SCALE: 6"=1'-0"

NOTES:

1. PANEL VERTICAL AND HORIZONTAL JOINT SPACING SHOULD BE 3/8" TYPICAL.



**American Fiber
Cement Corporation**

(303) 972-5107

www.americanfibercement.com

6901 S Pierce St #180, Littleton, CO 80128

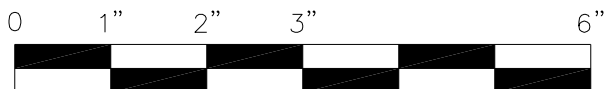
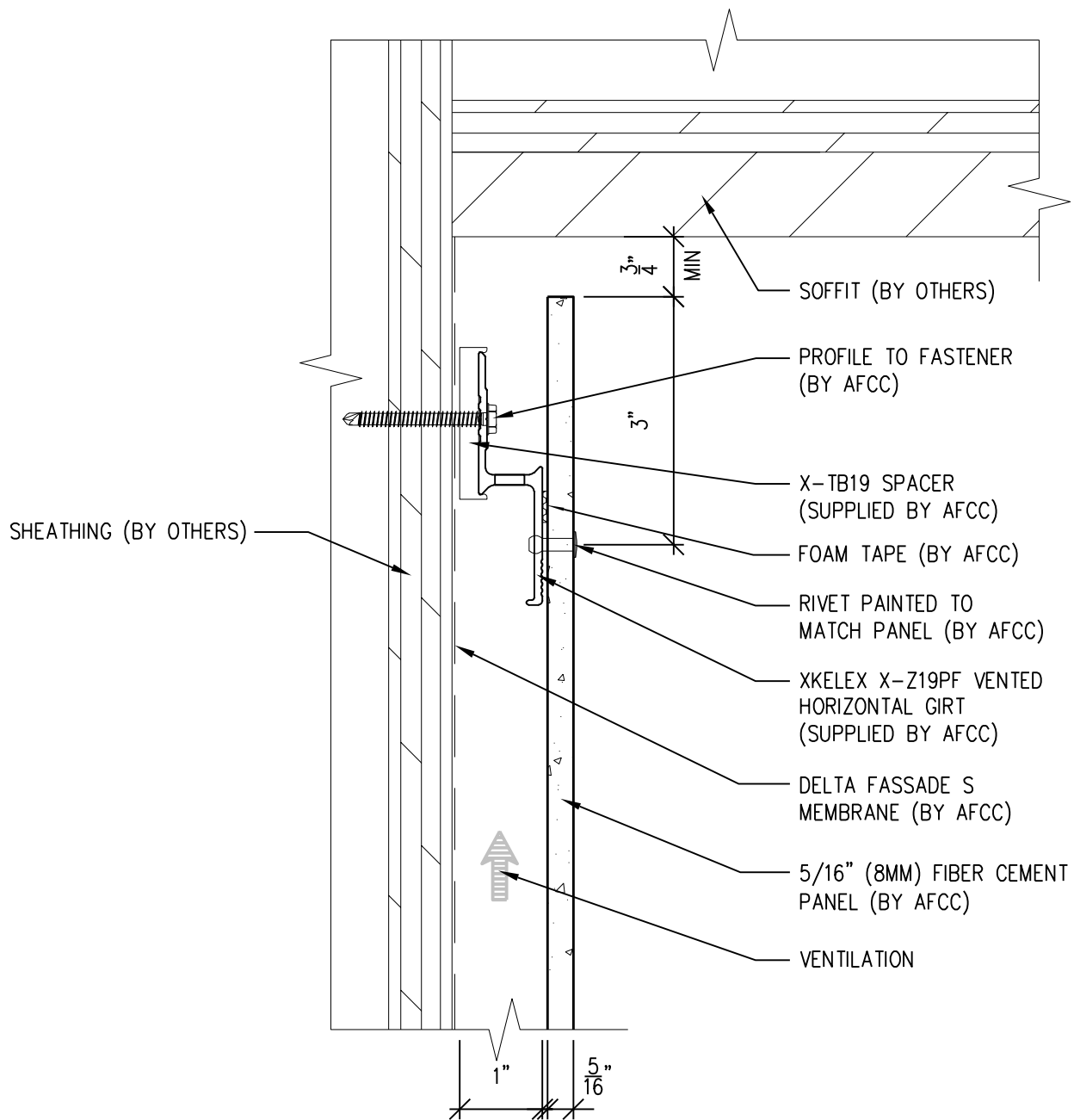
Ref.:

Top of Panel @
Coping

Date: 11/19/2021

One-Layer Aluminum Attachment System

XKELEX X-Z19PF GIRT



SCALE: 6"=1'-0"

NOTES:

1. PANEL VERTICAL AND HORIZONTAL JOINT SPACING SHOULD BE 3/8" TYPICAL.



**American Fiber
Cement Corporation**

(303) 972-5107

www.americanfibercement.com

6901 S Pierce St #180, Littleton, CO 80128

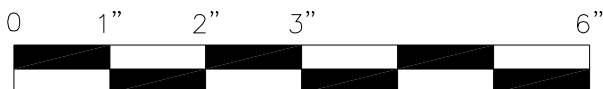
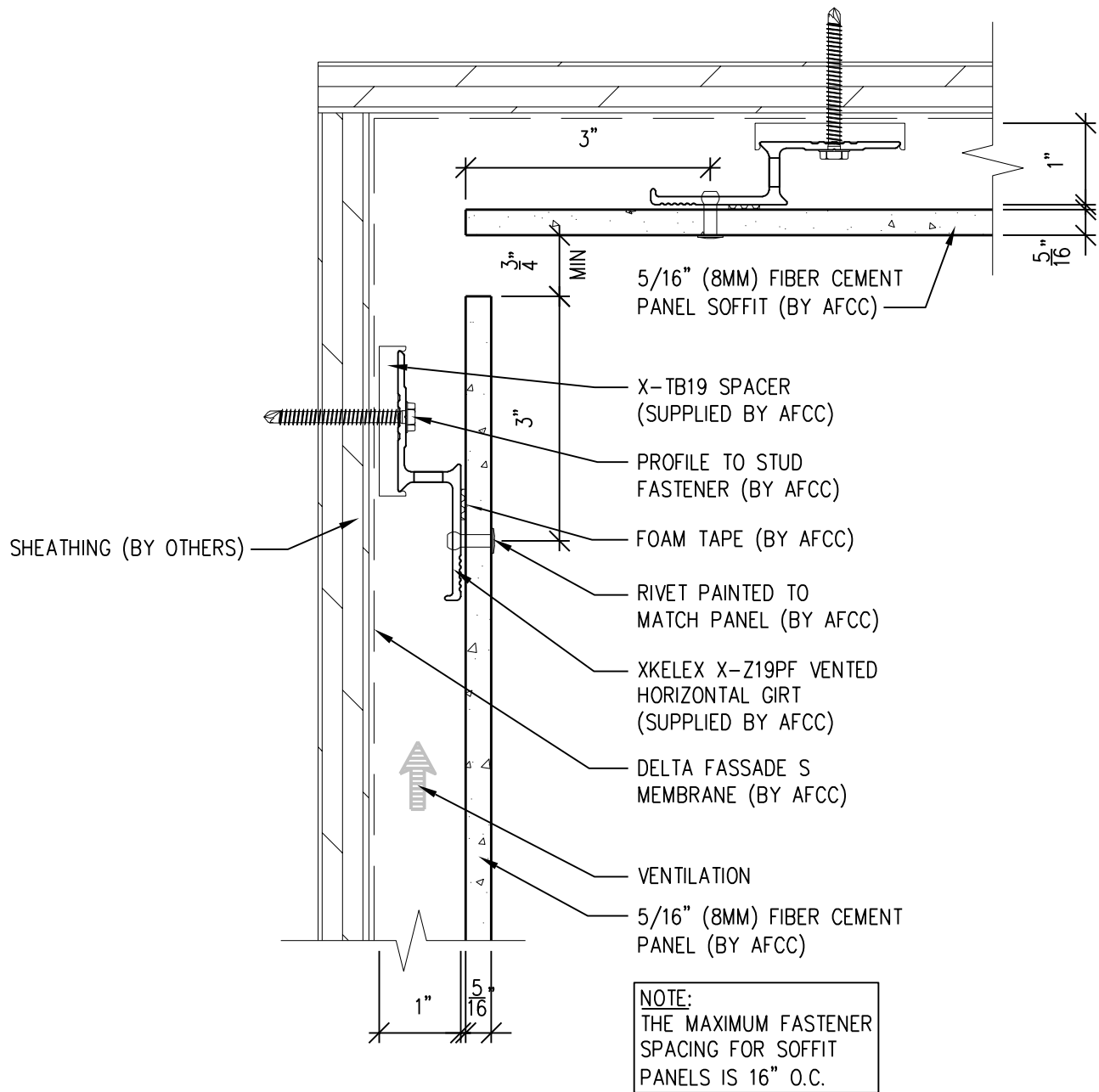
Ref.:

Top of Panel @
Soffit

Date: 11/19/2021

One-Layer Aluminum Attachment System

XKELEX X-Z19PF GIRT



SCALE: 6"=1'-0"

NOTES:

1. PANEL VERTICAL AND HORIZONTAL JOINT SPACING SHOULD BE 3/8" TYPICAL.



**American Fiber
Cement Corporation**

(303) 972-5107

www.americanfibercement.com

6901 S Pierce St #180, Littleton, CO 80128

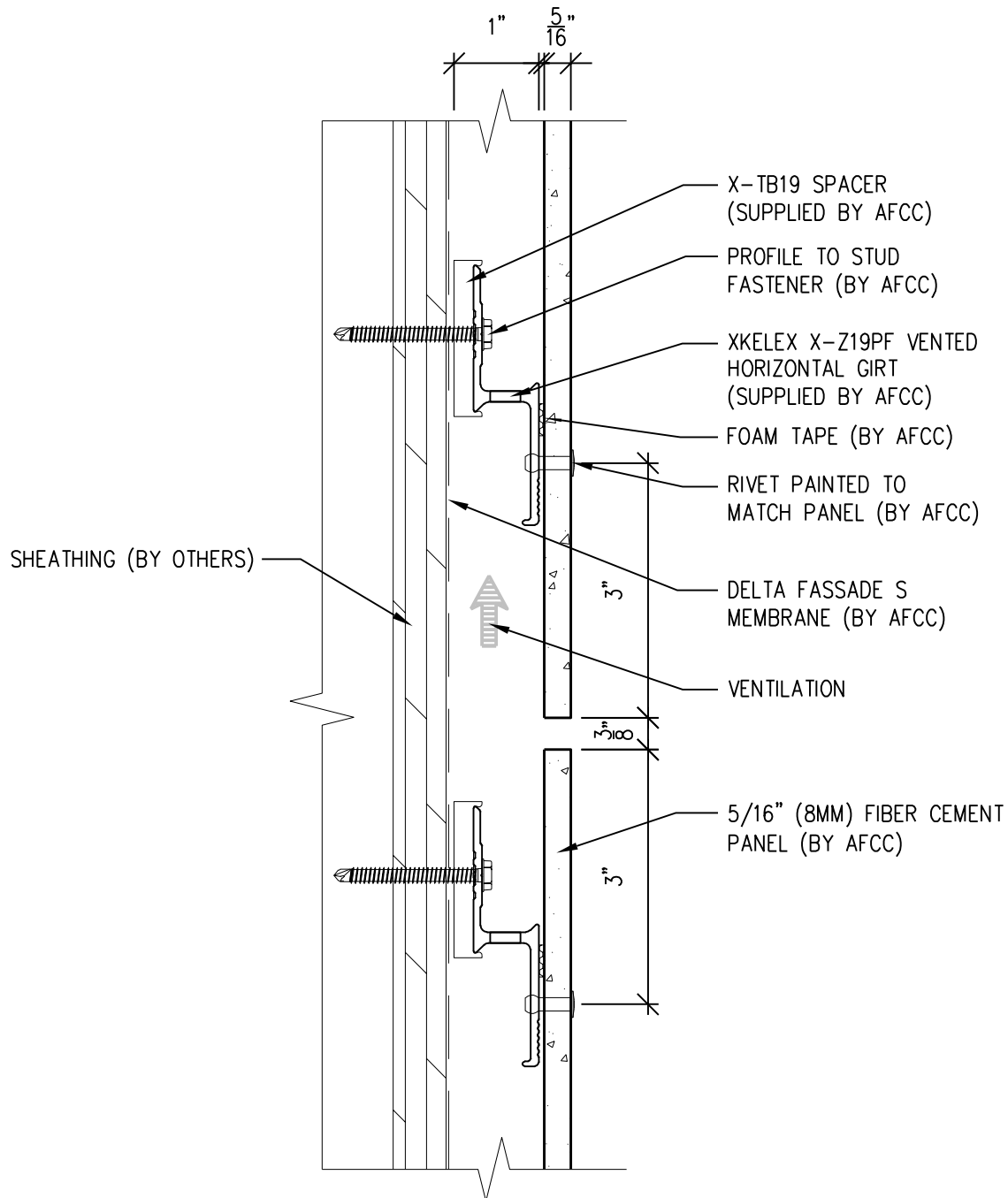
Ref.:

Top of Panel @
F.C.P. Soffit

Date: 11/19/2021

One-Layer Aluminum Attachment System

XKELEX X-Z19PF GIRT



NOTES:

1. PANEL VERTICAL AND HORIZONTAL JOINT SPACING SHOULD BE 3/8" TYPICAL.



SCALE: 6"=1'-0"



**American Fiber
Cement Corporation**

(303) 972-5107

www.americanfibercement.com

6901 S Pierce St #180, Littleton, CO 80128

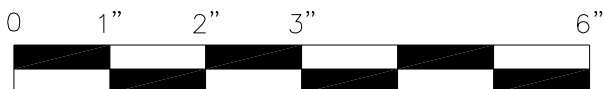
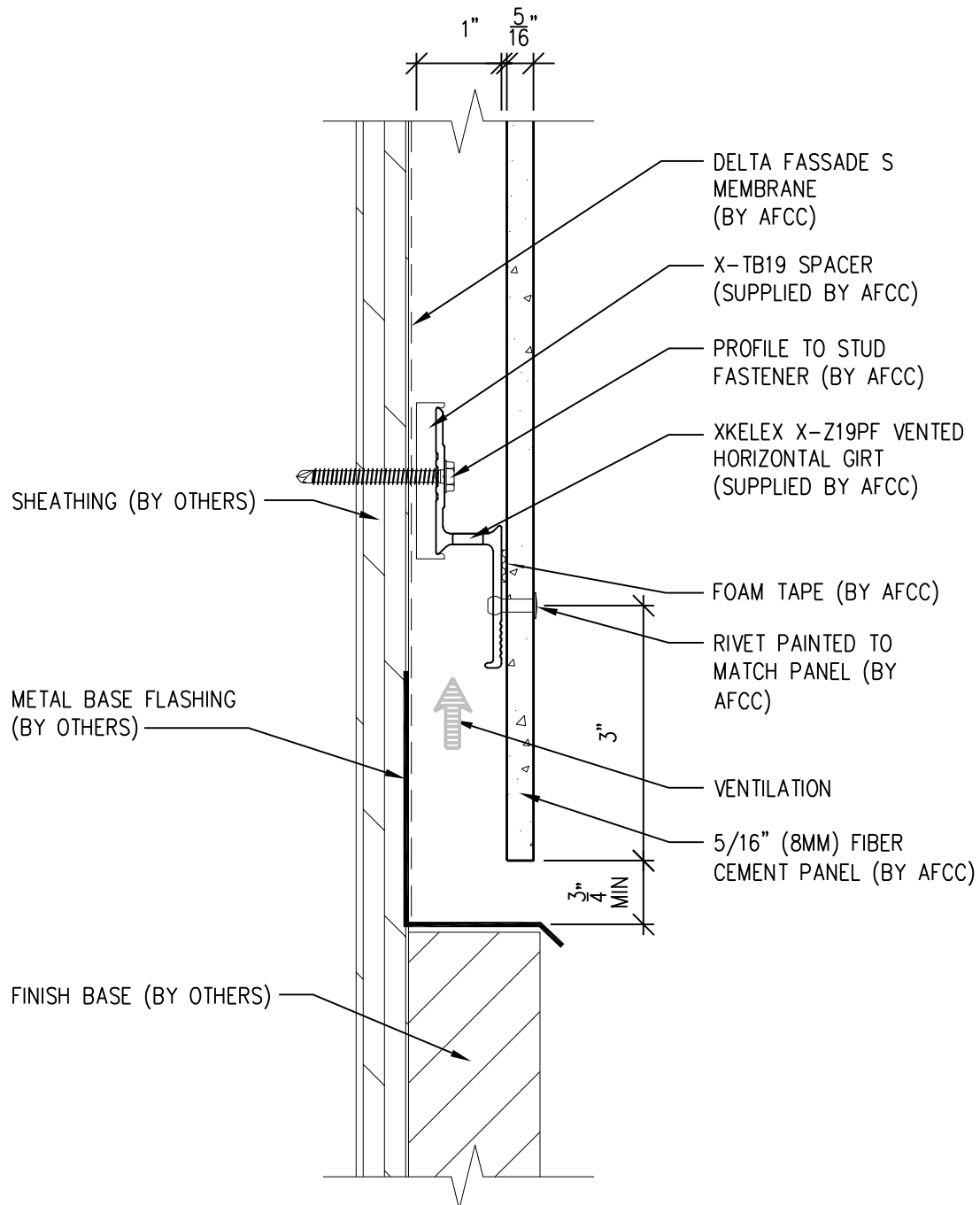
Ref.:

Horizontal Panel Joint

Date: 11/19/2021

One-Layer Aluminum Attachment System

XKELEX X-Z19PF GIRT



SCALE: 6"=1'-0"

NOTES:

1. PANEL VERTICAL AND HORIZONTAL JOINT SPACING SHOULD BE 3/8" TYPICAL.



**American Fiber
Cement Corporation**

(303) 972-5107

www.americanfibercement.com

6901 S Pierce St #180, Littleton, CO 80128

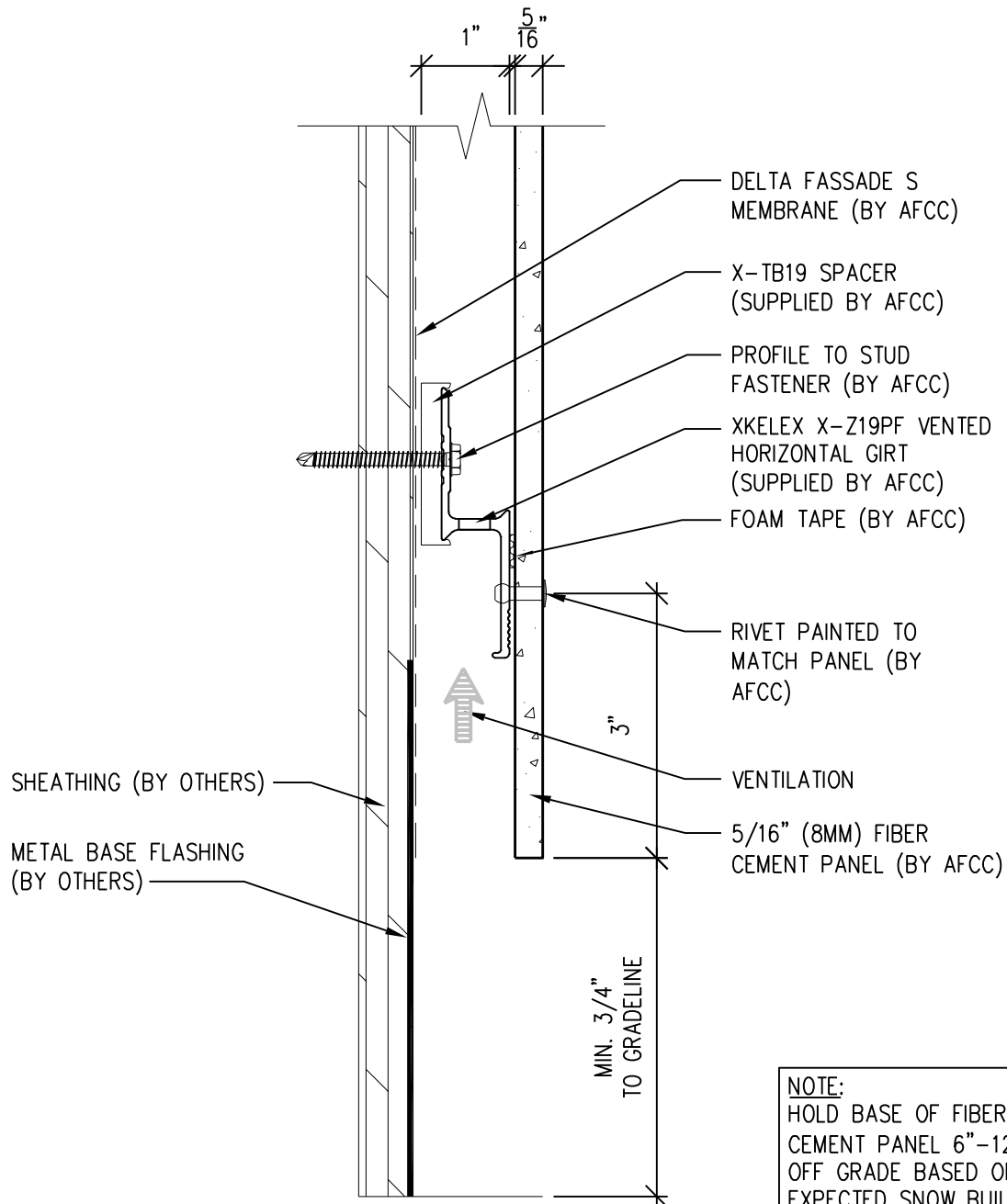
Ref.:

Bottom of Panel @
Wall Base

Date: 11/19/2021

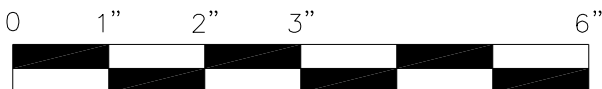
One-Layer Aluminum Attachment System

XKELEX X-Z19PF GIRT



NOTES:

1. PANEL VERTICAL AND HORIZONTAL JOINT SPACING SHOULD BE 3/8" TYPICAL.



SCALE: 6"=1'-0"

Ref.:

Bottom of Panel @
Open Termination



**American Fiber
Cement Corporation**

(303) 972-5107

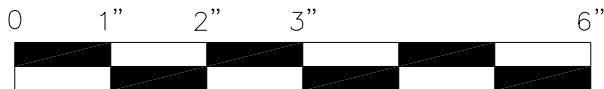
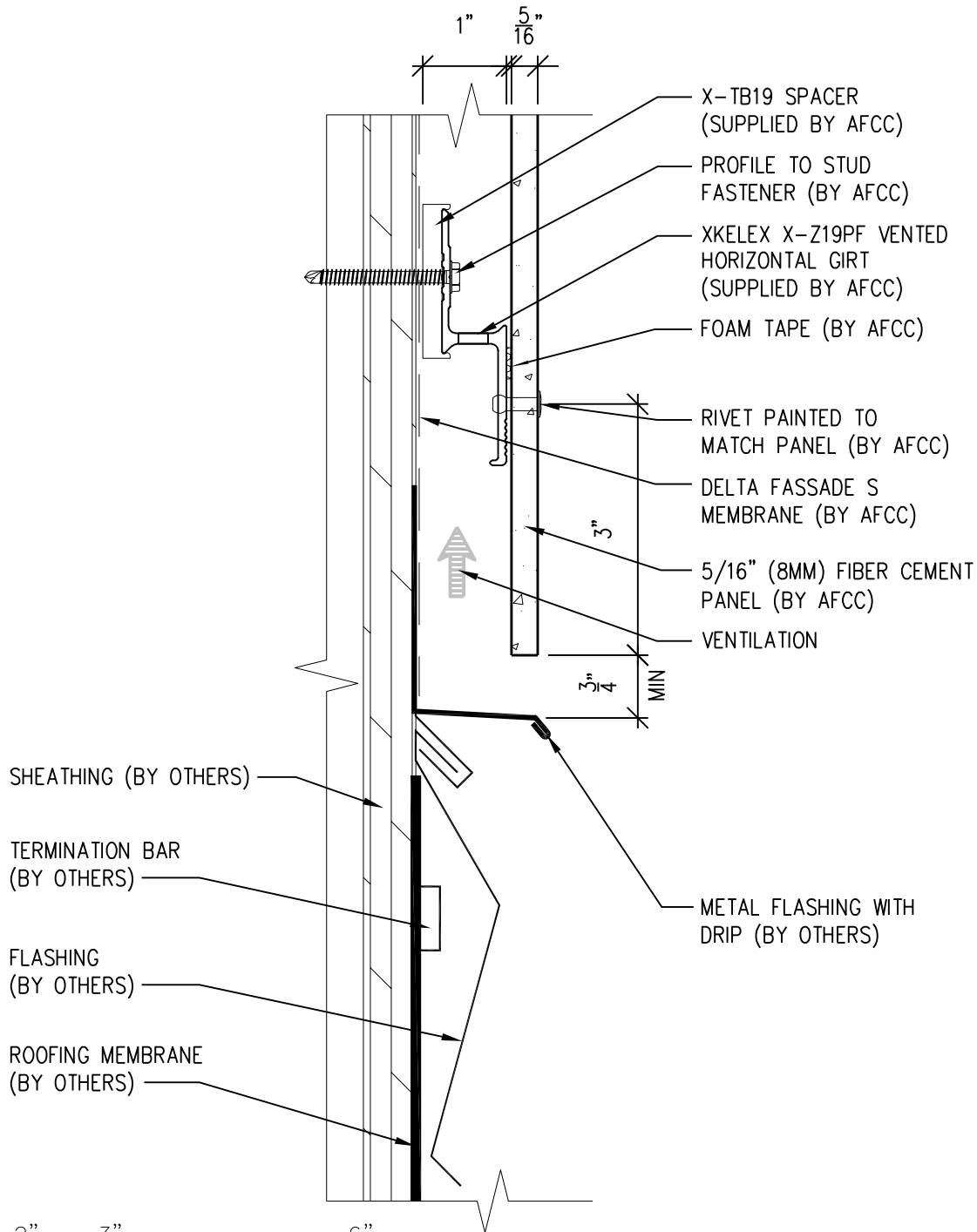
www.americanfibercement.com

6901 S Pierce St #180, Littleton, CO 80128

Date: 11/19/2021

One-Layer Aluminum Attachment System

XKELEX X-Z19PF GIRT



SCALE: 6"=1'-0"

NOTES:

1. PANEL VERTICAL AND HORIZONTAL JOINT SPACING SHOULD BE 3/8" TYPICAL.



**American Fiber
Cement Corporation**

(303) 972-5107

www.americanfibercement.com

6901 S Pierce St #180, Littleton, CO 80128

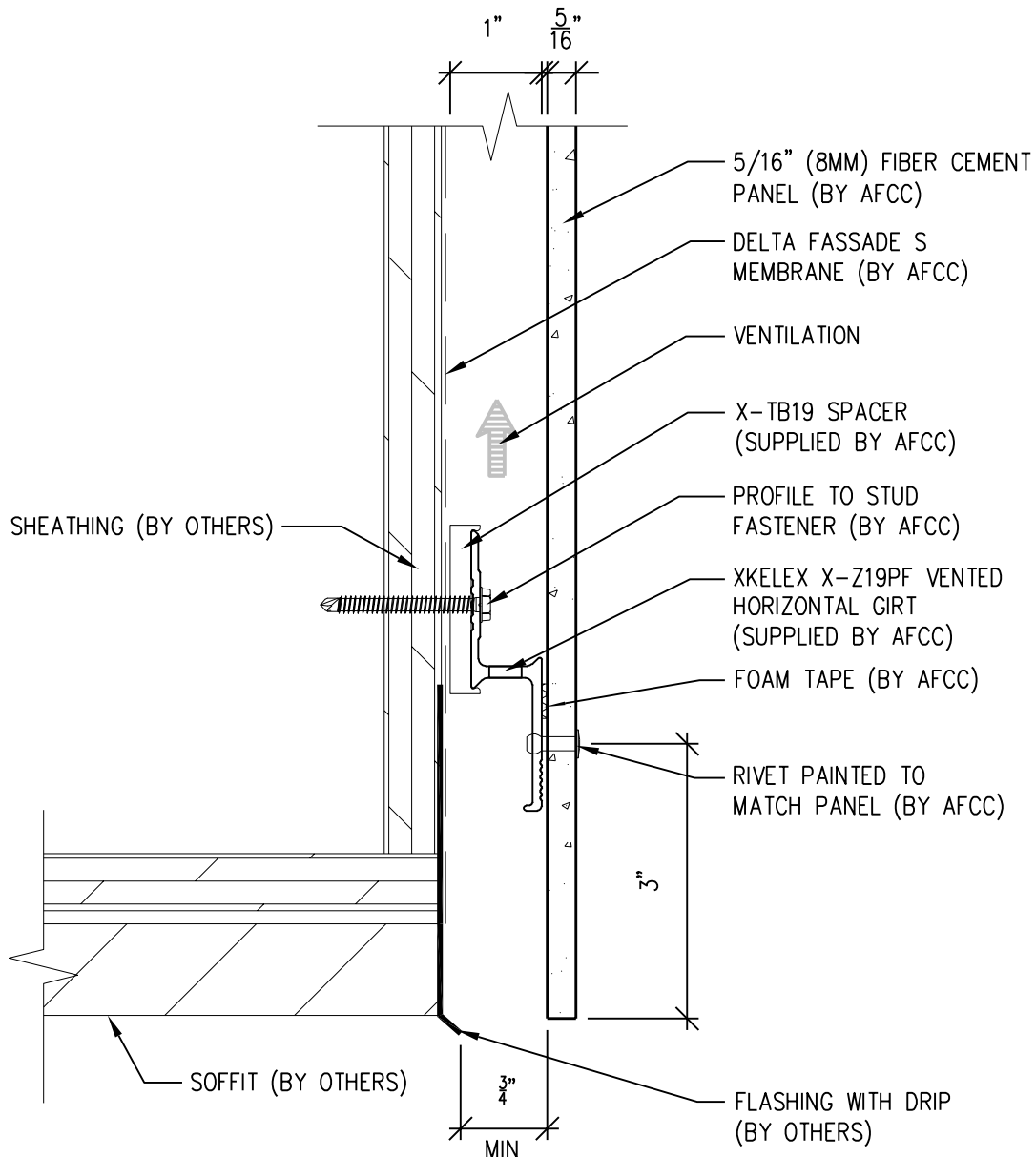
Ref.:

Bottom of Panel @
Low Roof Flashing

Date: 11/19/2021

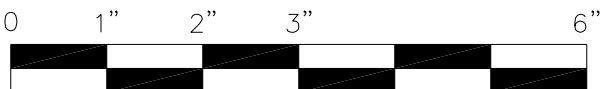
One-Layer Aluminum Attachment System

XKELEX X-Z19PF GIRT



NOTES:

1. PANEL VERTICAL AND HORIZONTAL JOINT SPACING SHOULD BE 3/8" TYPICAL.



SCALE: 6"=1'-0"

Ref.:

Bottom of Panel @
Soffit



**American Fiber
Cement Corporation**

(303) 972-5107

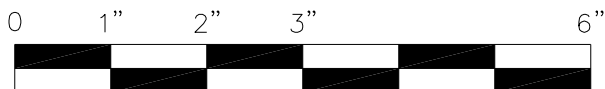
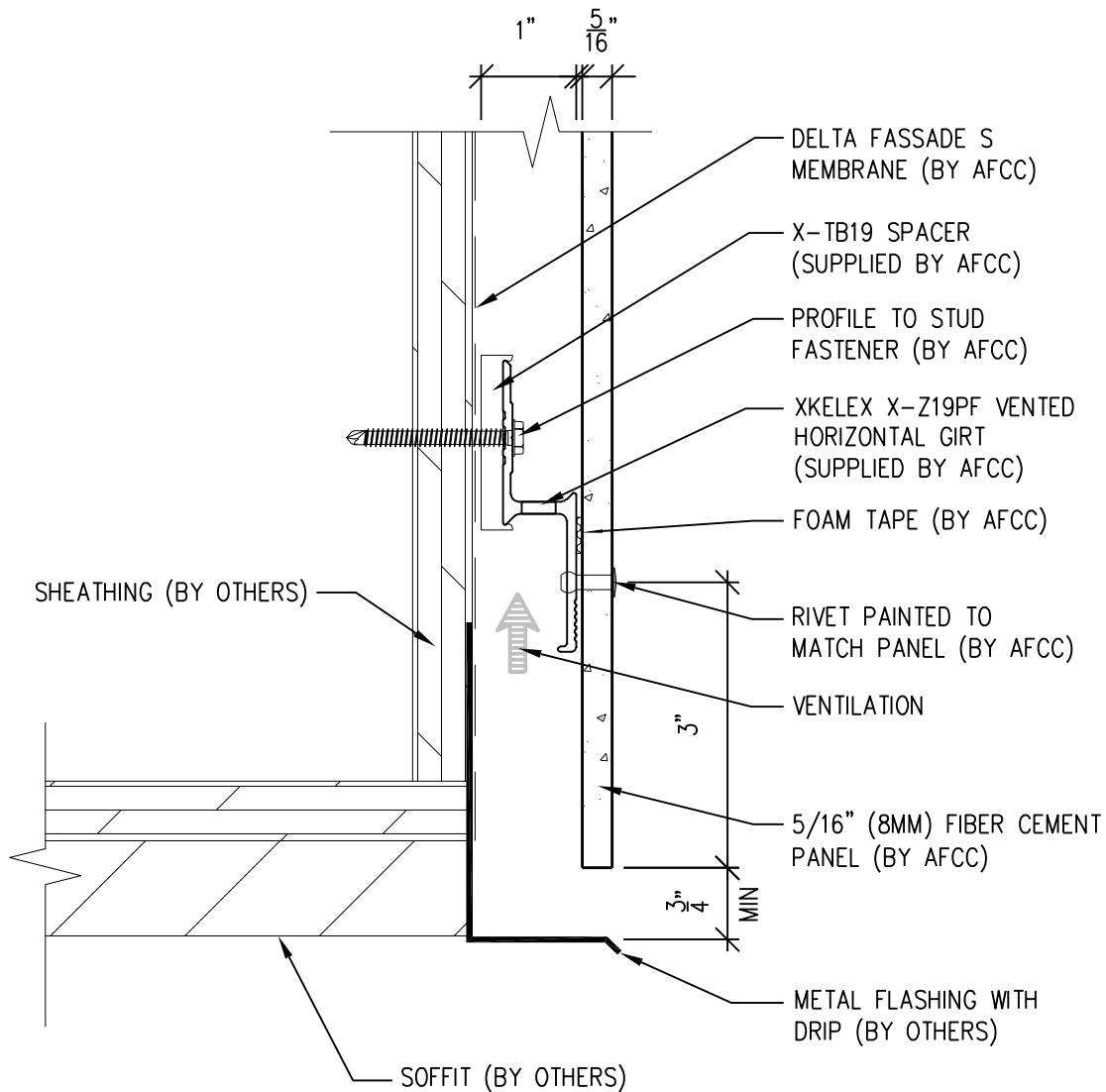
www.americanfibercement.com

6901 S Pierce St #180, Littleton, CO 80128

Date: 11/19/2021

One-Layer Aluminum Attachment System

XKELEX X-Z19PF GIRT



SCALE: 6"=1'-0"

NOTES:

1. PANEL VERTICAL AND HORIZONTAL JOINT SPACING SHOULD BE 3/8" TYPICAL.



**American Fiber
Cement Corporation**

(303) 972-5107

www.americanfibercement.com

6901 S Pierce St #180, Littleton, CO 80128

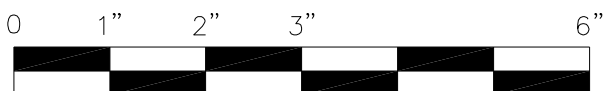
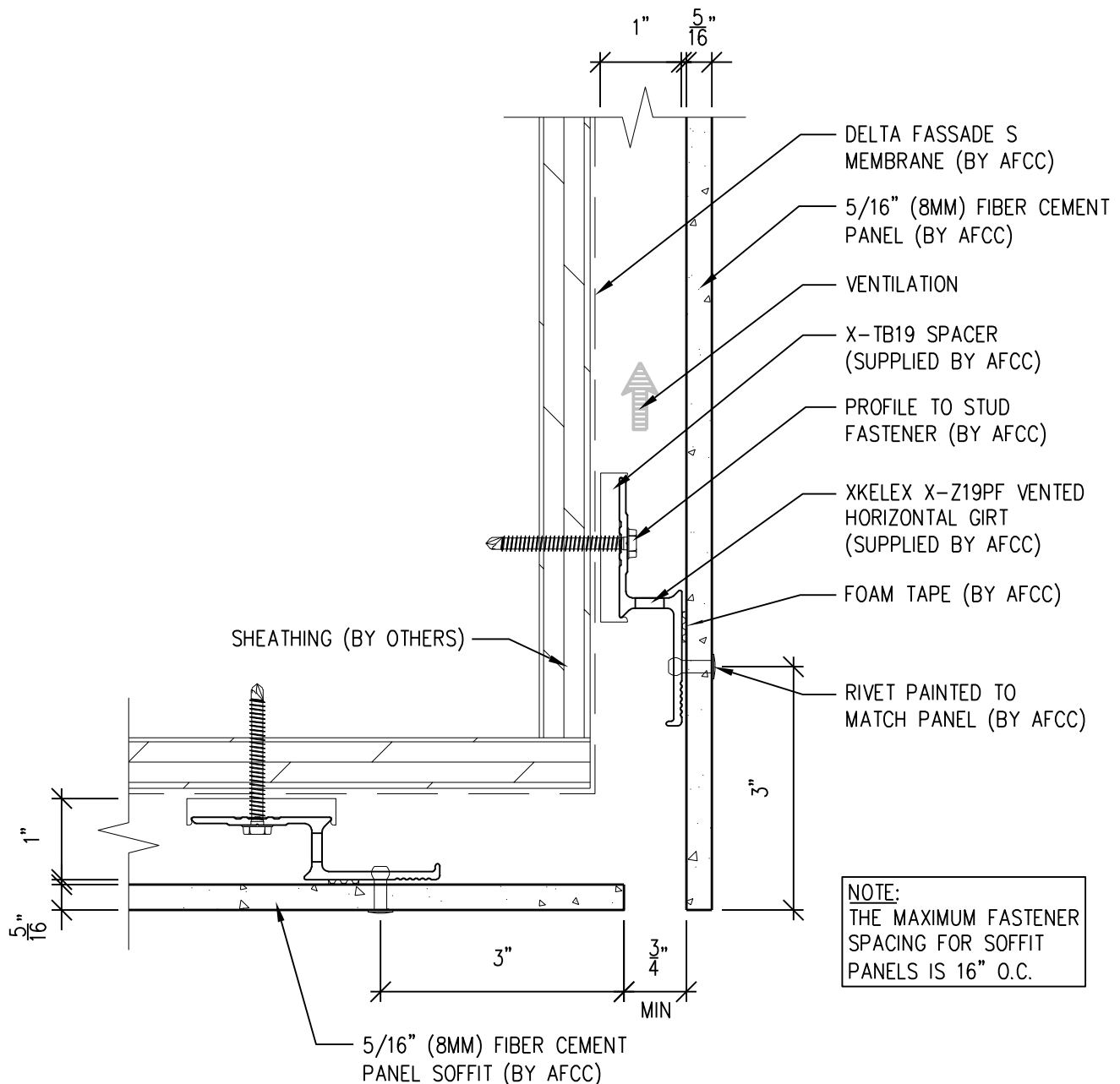
Ref.:

Bottom of Panel @
Soffit (Alternate)

Date: 11/19/2021

One-Layer Aluminum Attachment System

XKELEX X-Z19PF GIRT



SCALE: 6"=1'-0"

NOTES:

1. PANEL VERTICAL AND HORIZONTAL JOINT SPACING SHOULD BE 3/8" TYPICAL.



**American Fiber
Cement Corporation**

(303) 972-5107

www.americanfibercement.com

6901 S Pierce St #180, Littleton, CO 80128

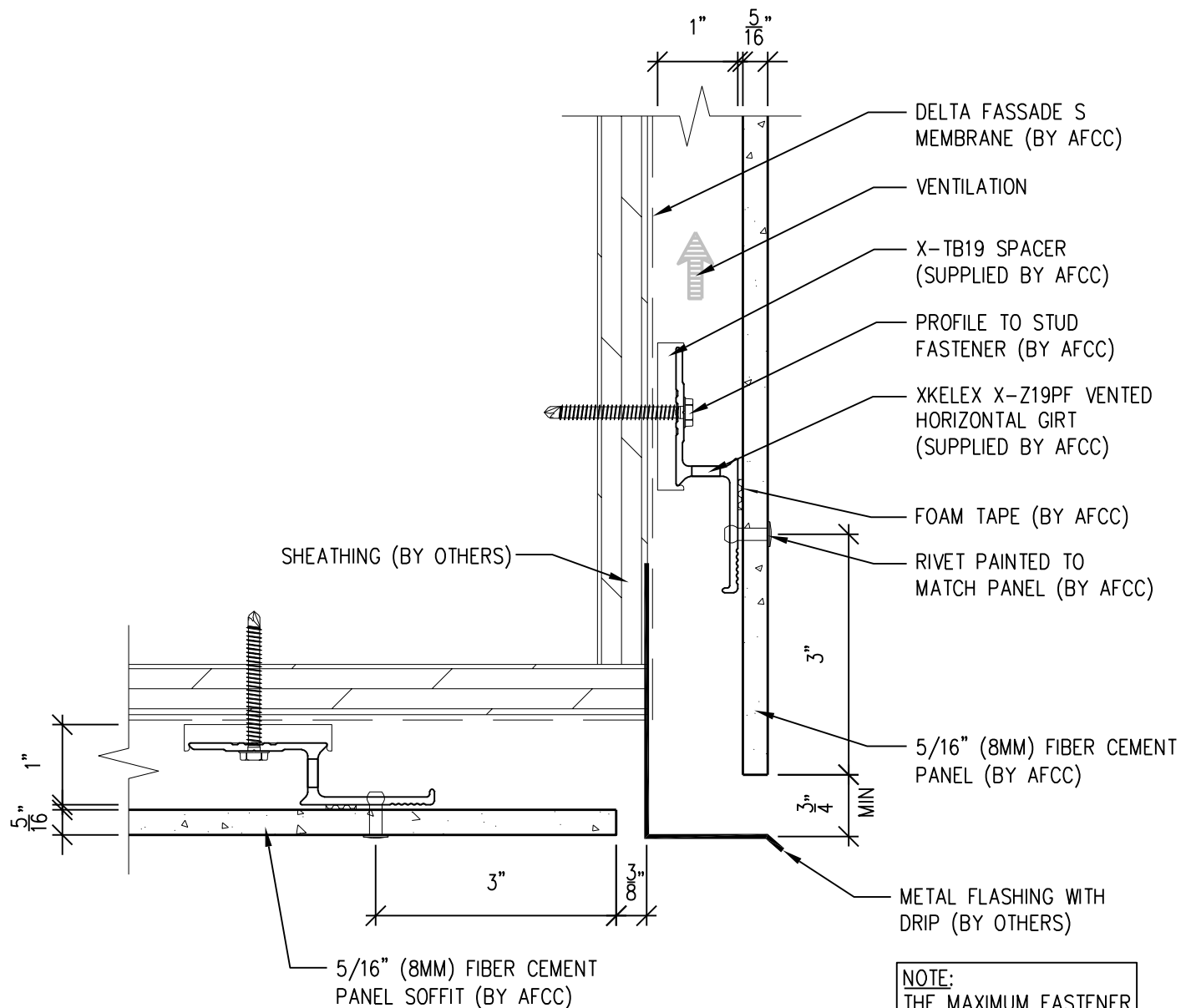
Ref.:

Bottom of Panel @
F.C.P. Soffit

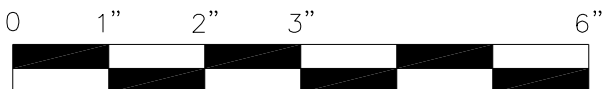
Date: 11/19/2021

One-Layer Aluminum Attachment System

XKELEX X-Z19PF GIRT



NOTE:
THE MAXIMUM FASTENER
SPACING FOR SOFFIT
PANELS IS 16" O.C.



SCALE: 6"=1'-0"

NOTES:

1. PANEL VERTICAL AND HORIZONTAL JOINT SPACING SHOULD BE 3/8" TYPICAL.



**American Fiber
Cement Corporation**

(303) 972-5107

www.americanfibercement.com

6901 S Pierce St #180, Littleton, CO 80128

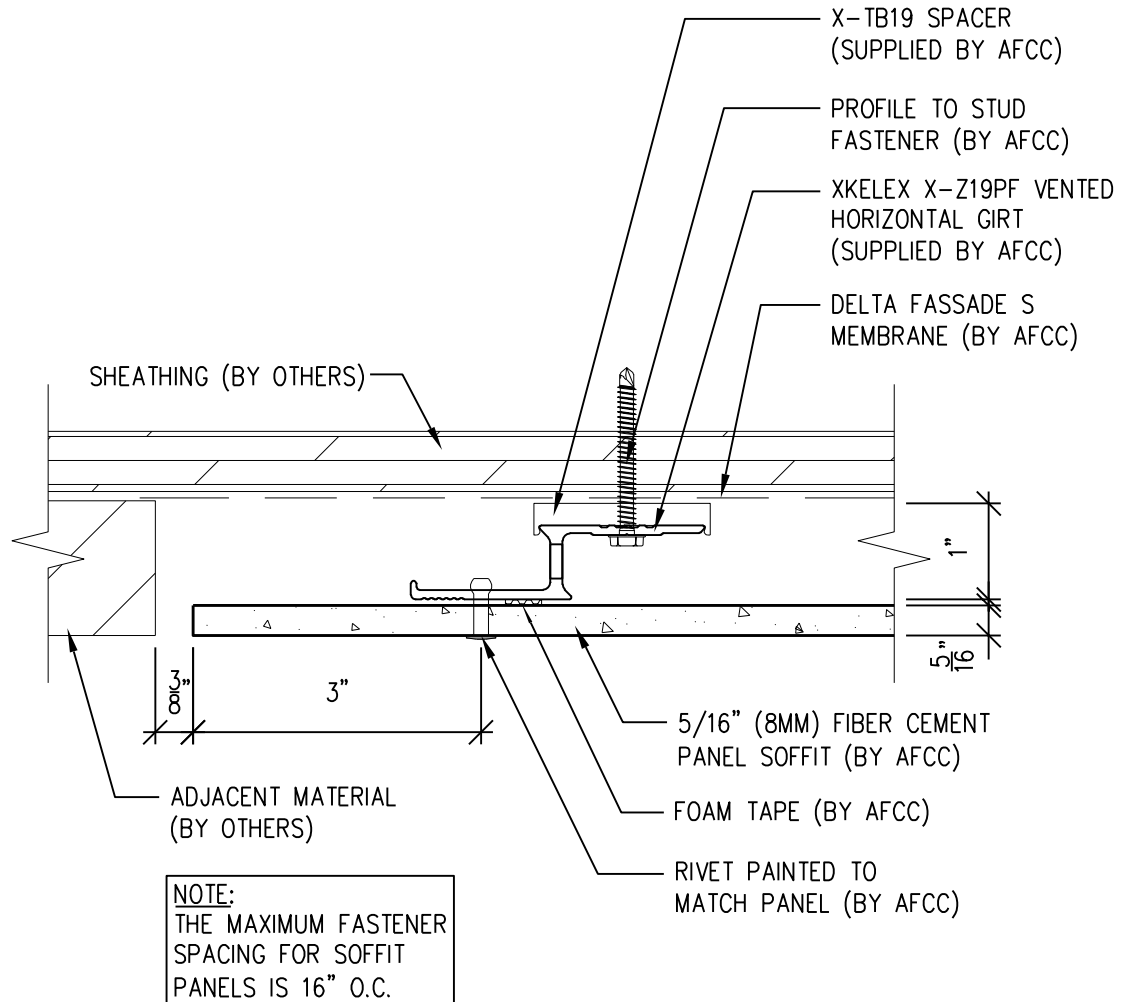
Ref.:

Bottom of Panel @
F.C.P. Soffit (Alternate)

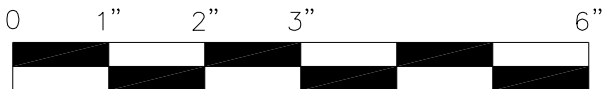
Date: 11/19/2021

One-Layer Aluminum Attachment System

XKELEX X-Z19PF GIRT



NOTE:
THE MAXIMUM FASTENER
SPACING FOR SOFFIT
PANELS IS 16" O.C.



SCALE: 6"=1'-0"

NOTES:

1. PANEL VERTICAL AND HORIZONTAL JOINT SPACING SHOULD BE 3/8" TYPICAL.



**American Fiber
Cement Corporation**

(303) 972-5107

www.americanfibercement.com

6901 S Pierce St #180, Littleton, CO 80128

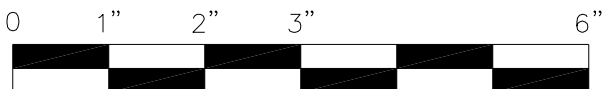
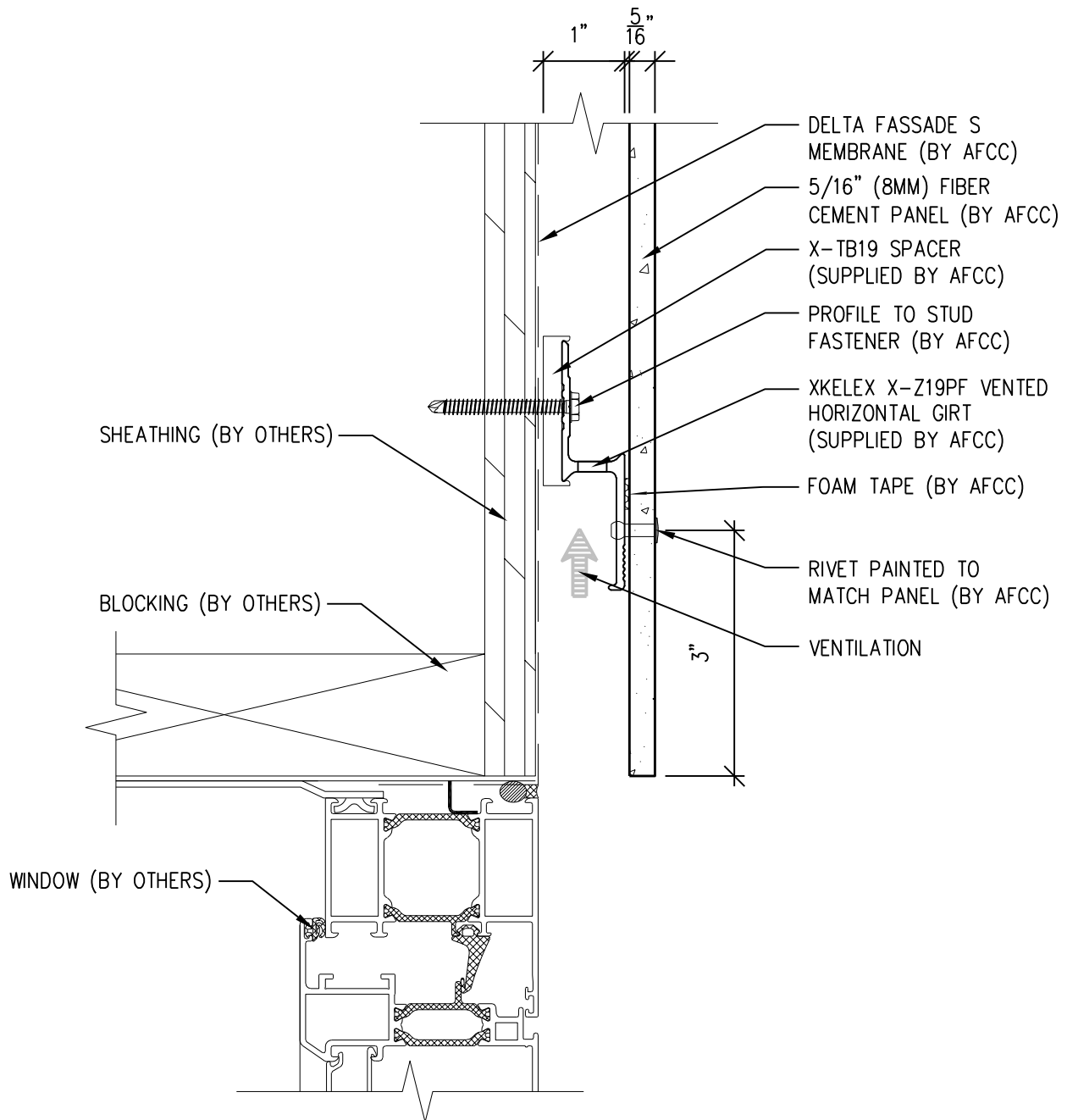
Ref.:

**Soffit Termination @
Adjacent Material**

Date: 11/19/2021

One-Layer Aluminum Attachment System

XKELEX X-Z19PF GIRT



SCALE: 6"=1'-0"

NOTES:

1. PANEL VERTICAL AND HORIZONTAL JOINT SPACING SHOULD BE 3/8" TYPICAL.



**American Fiber
Cement Corporation**

(303) 972-5107

www.americanfibercement.com

6901 S Pierce St #180, Littleton, CO 80128

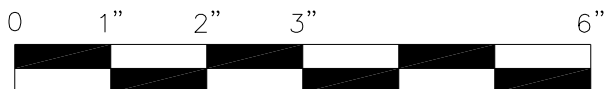
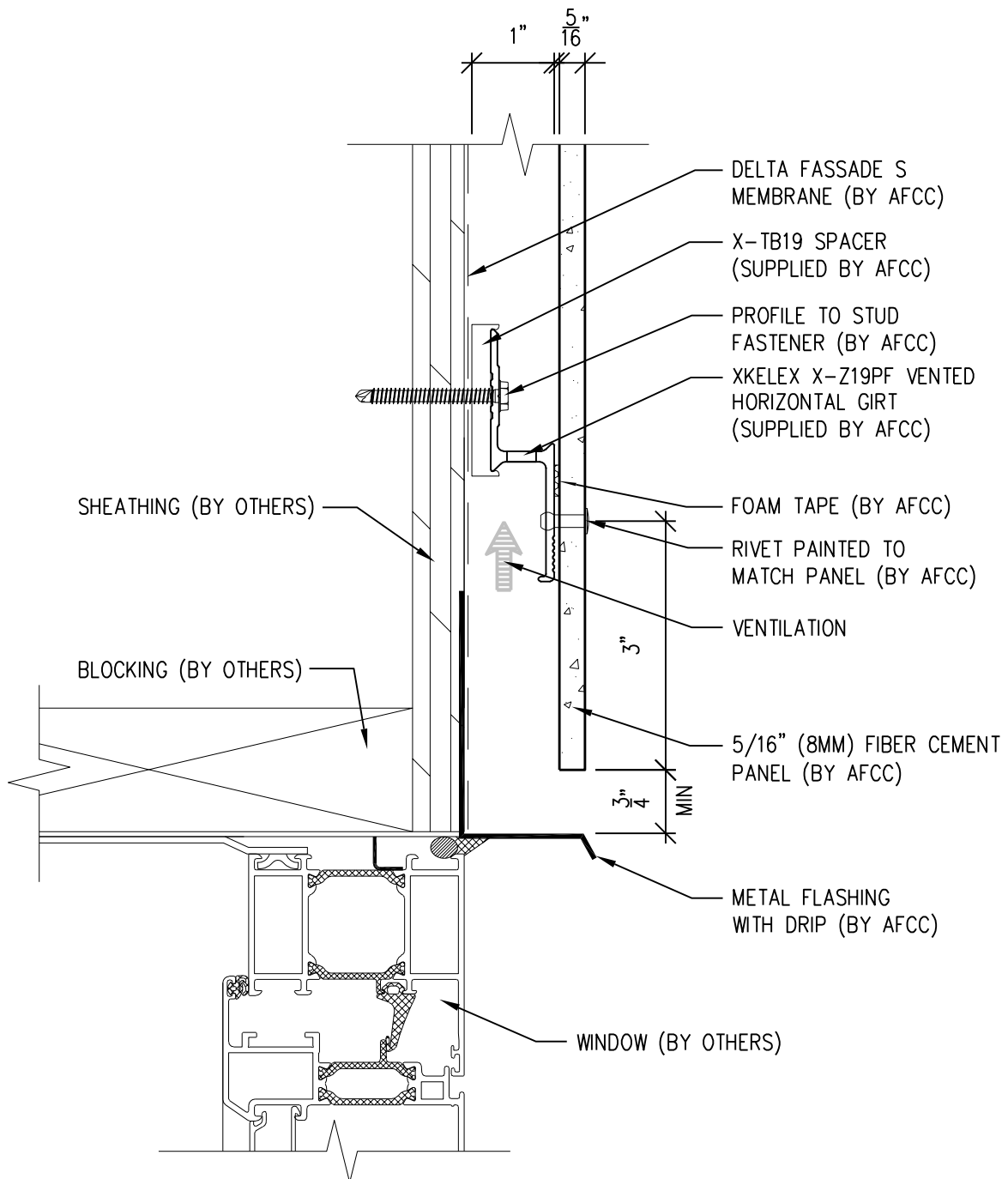
Ref.:

Bottom of Panel @
Window Head

Date: 11/19/2021

One-Layer Aluminum Attachment System

XKELEX X-Z19PF GIRT



SCALE: 6"=1'-0"

NOTES:

1. PANEL VERTICAL AND HORIZONTAL JOINT SPACING SHOULD BE 3/8" TYPICAL.



**American Fiber
Cement Corporation**

(303) 972-5107

www.americanfibercement.com

6901 S Pierce St #180, Littleton, CO 80128

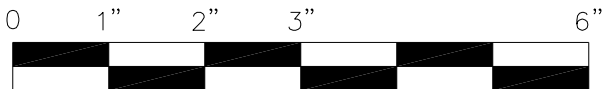
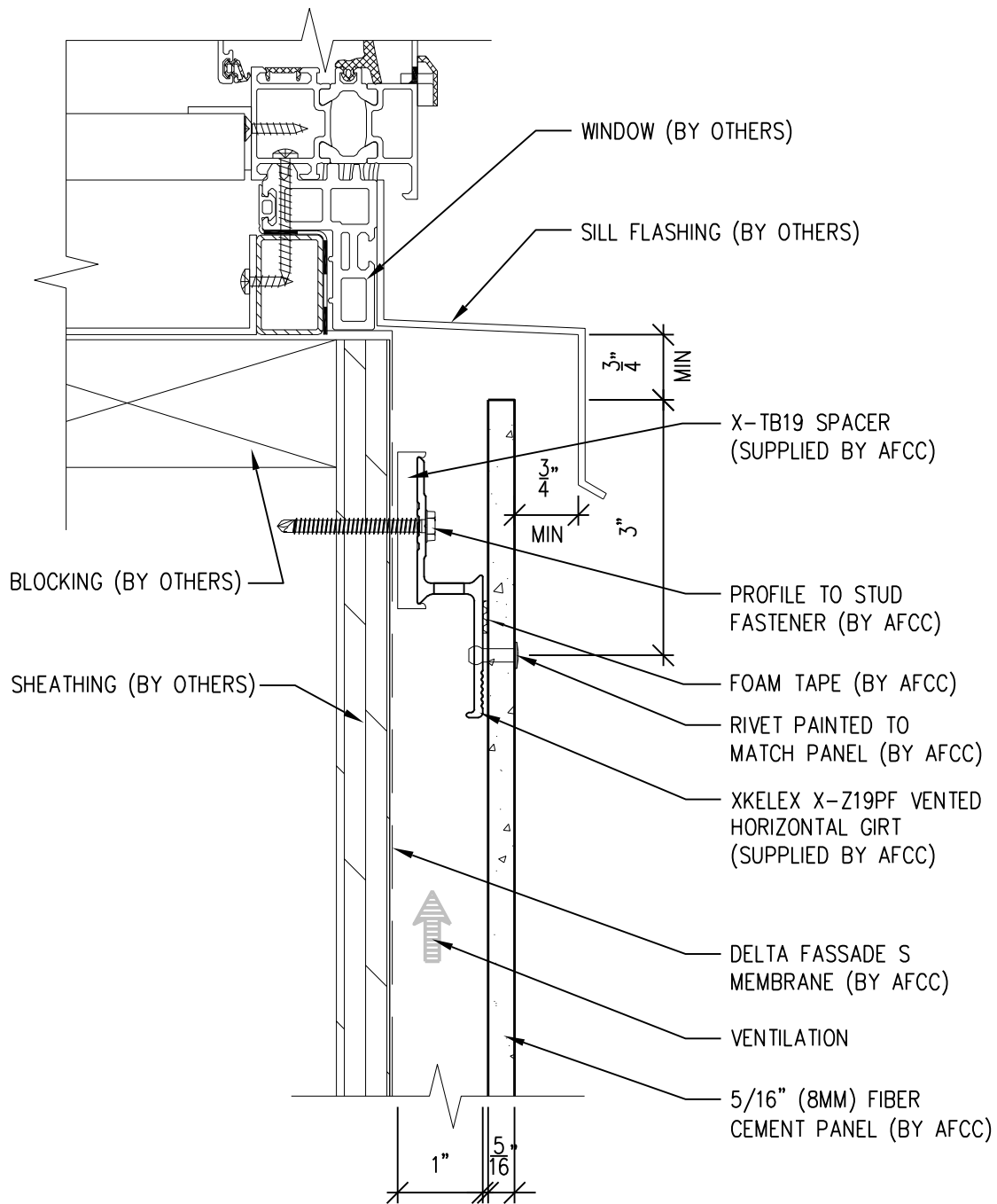
Ref.:

Bottom of Panel @
Window Head (Alternate)

Date: 11/19/2021

One-Layer Aluminum Attachment System

XKELEX X-Z19PF GIRT



SCALE: 6"=1'-0"

NOTES:

1. PANEL VERTICAL AND HORIZONTAL JOINT SPACING SHOULD BE 3/8" TYPICAL.



**American Fiber
Cement Corporation**

(303) 972-5107

www.americanfibercement.com

6901 S Pierce St #180, Littleton, CO 80128

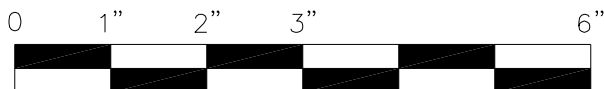
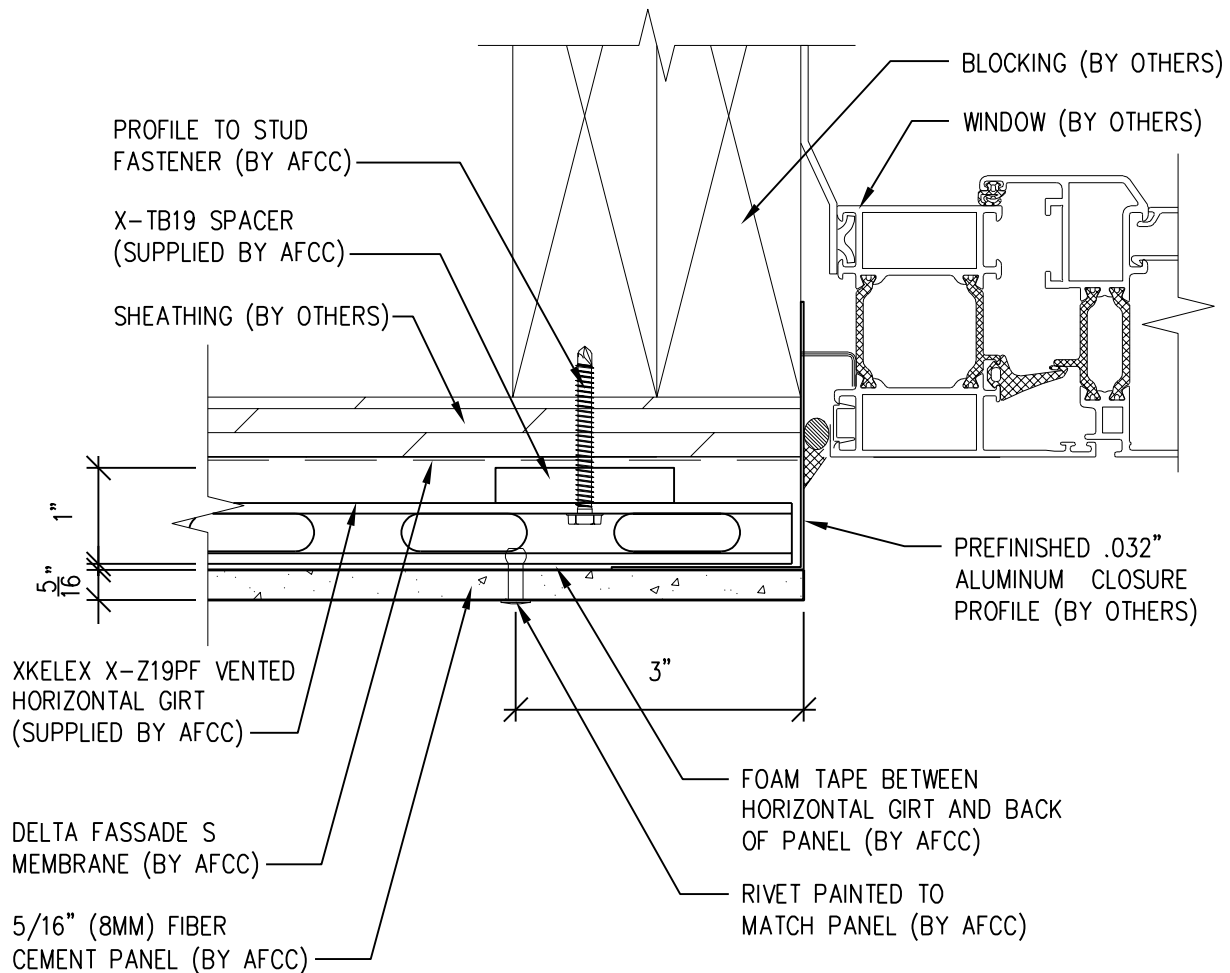
Ref.:

Top of Panel @
Window Sill

Date: 11/19/2021

One-Layer Aluminum Attachment System

XKELEX X-Z19PF GIRT



SCALE: 6"=1'-0"

NOTES:

1. PANEL VERTICAL AND HORIZONTAL JOINT SPACING SHOULD BE 3/8" TYPICAL.



**American Fiber
Cement Corporation**

(303) 972-5107

www.americanfibercement.com

6901 S Pierce St #180, Littleton, CO 80128

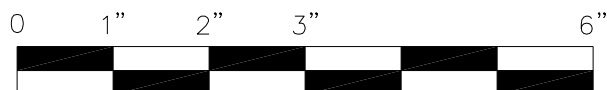
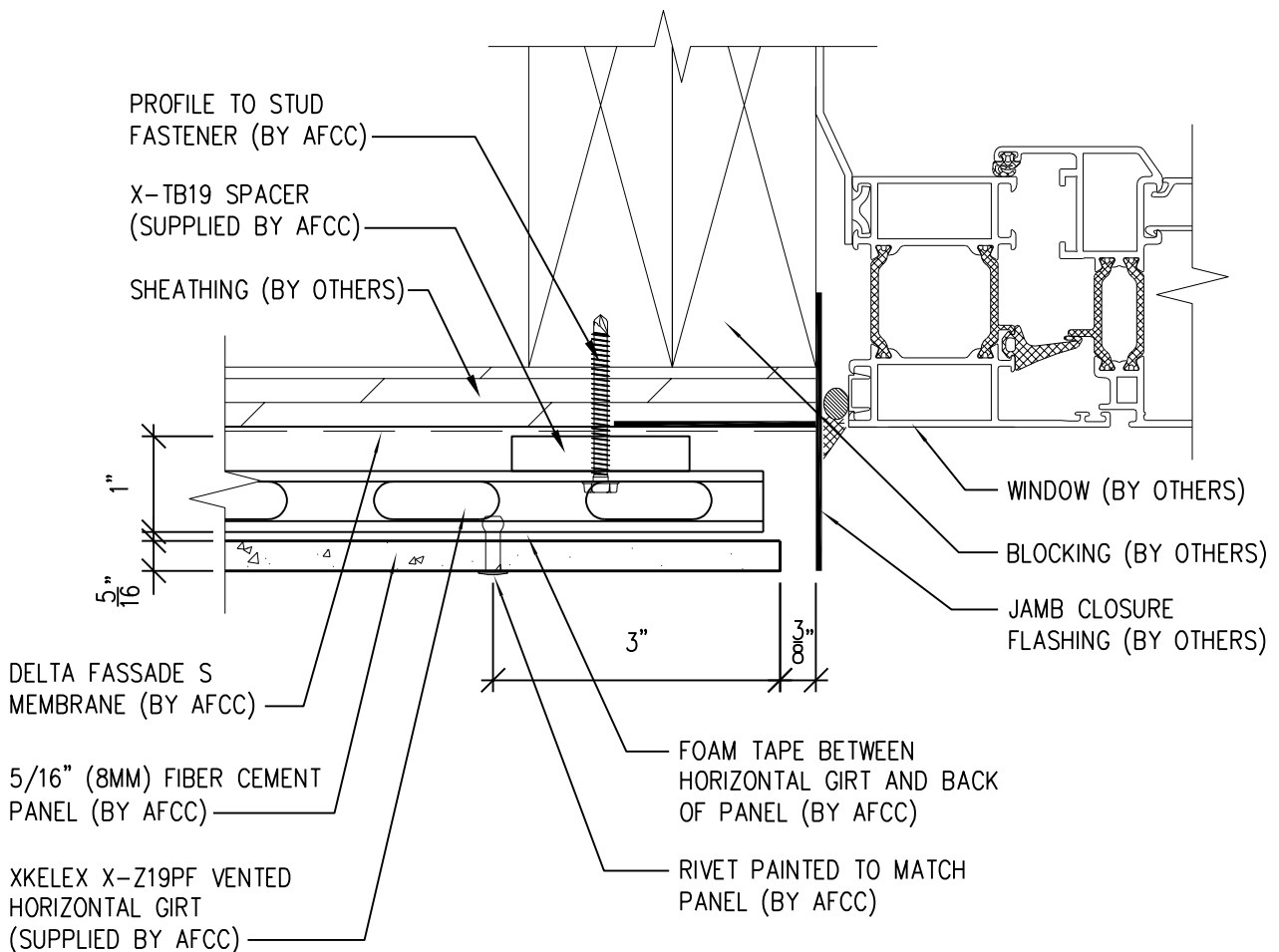
Ref.:

**Panel Edge @
Window Jamb**

Date: 11/19/2021

One-Layer Aluminum Attachment System

XKELEX X-Z19PF GIRT



SCALE: 6"=1'-0"

NOTES:

1. PANEL VERTICAL AND HORIZONTAL JOINT SPACING SHOULD BE 3/8" TYPICAL.



**American Fiber
Cement Corporation**

(303) 972-5107

www.americanfibercement.com

6901 S Pierce St #180, Littleton, CO 80128

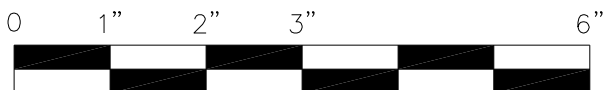
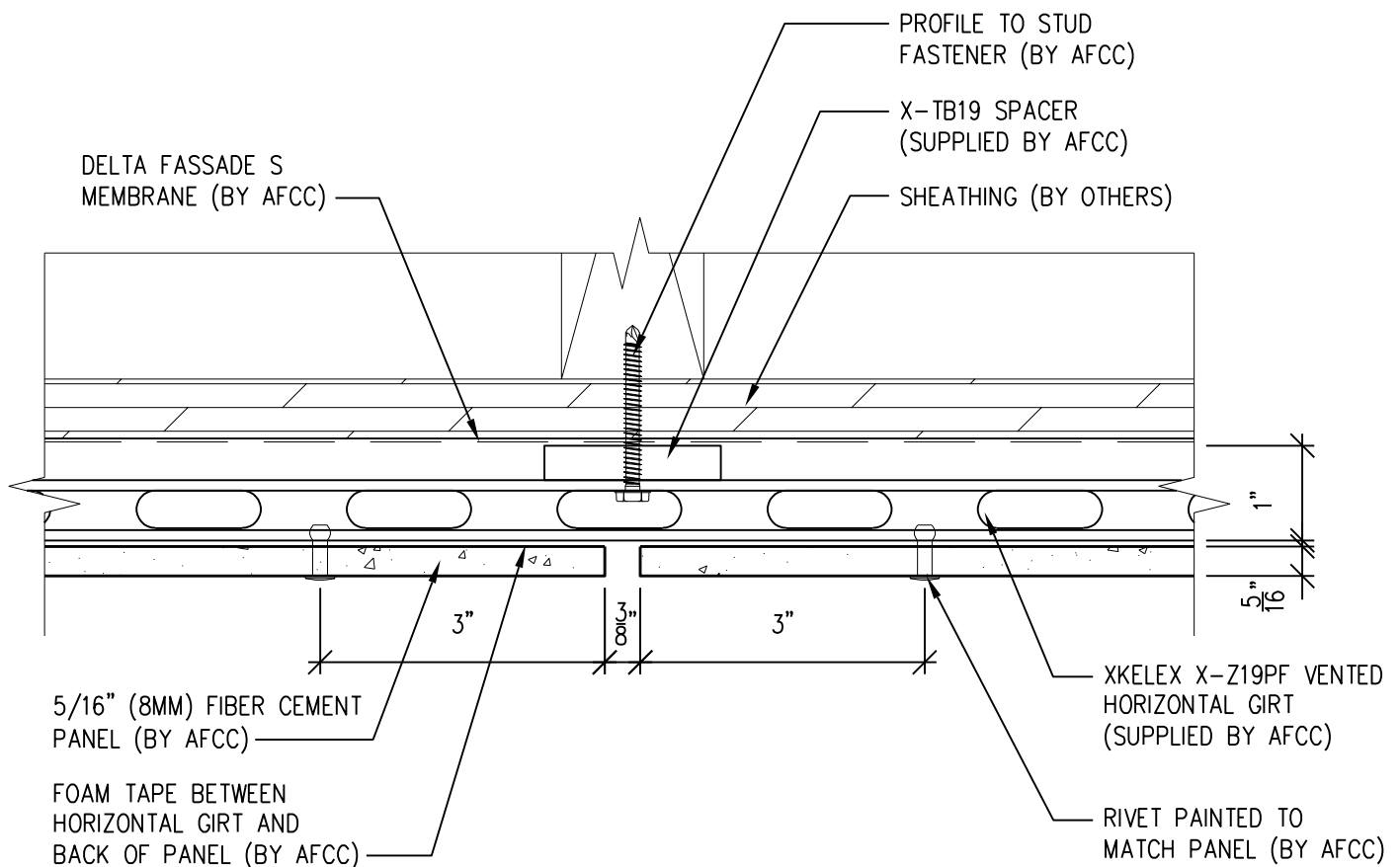
Ref.:

Panel Edge @
Window Jamb (Alternate)

Date: 11/19/2021

One-Layer Aluminum Attachment System

XKELEX X-Z19PF GIRT



SCALE: 6"=1'-0"

NOTES:

1. PANEL VERTICAL AND HORIZONTAL JOINT SPACING SHOULD BE 3/8" TYPICAL.



**American Fiber
Cement Corporation**

(303) 972-5107

www.americanfibercement.com

6901 S Pierce St #180, Littleton, CO 80128

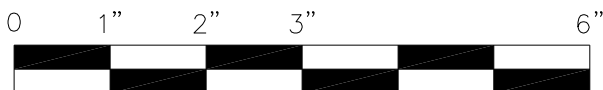
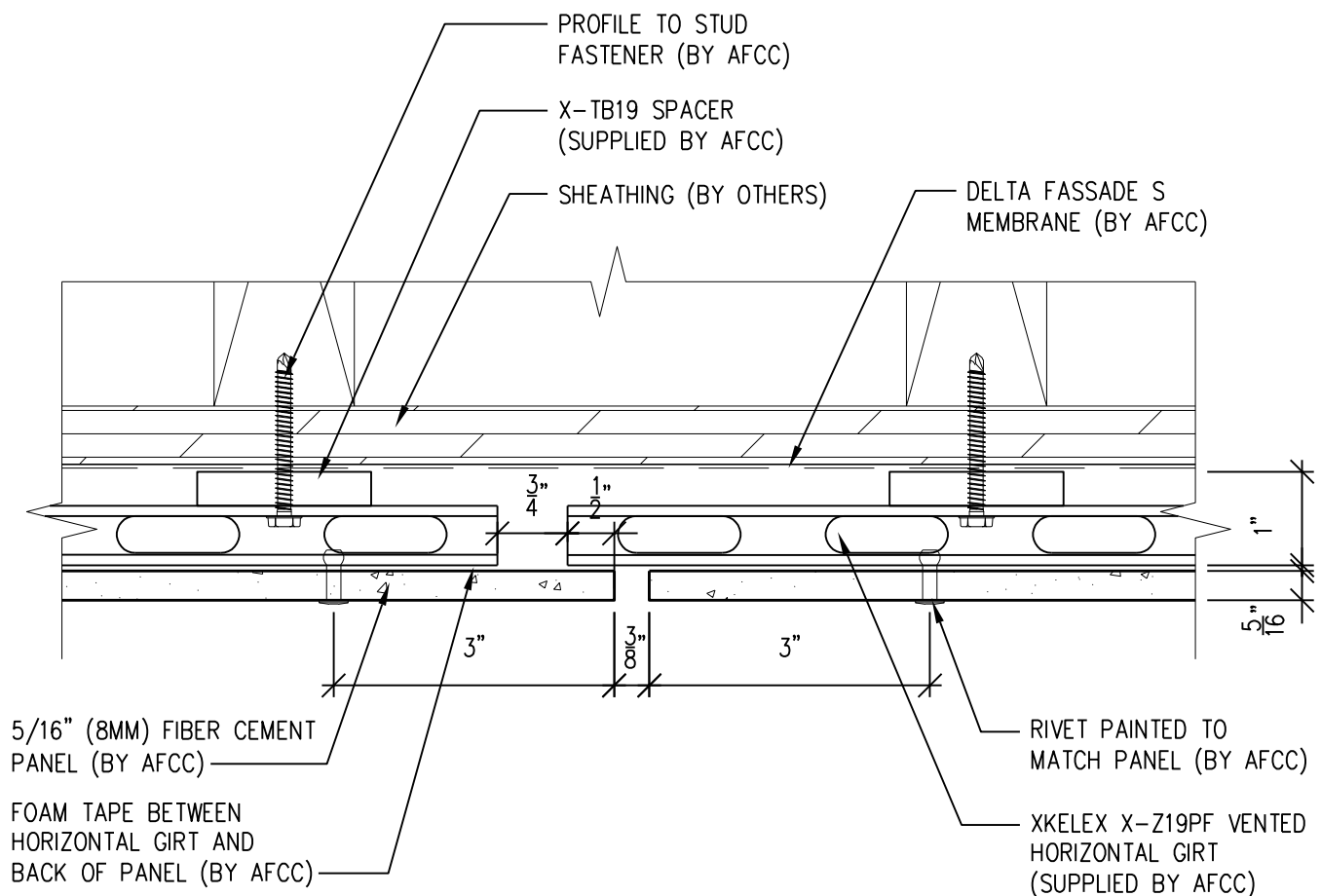
Ref.:

Vertical Joint @
Continuous Substrate

Date: 11/19/2021

One-Layer Aluminum Attachment System

XKELEX X-Z19PF GIRT



SCALE: 6"=1'-0"

NOTES:

1. PANEL VERTICAL AND HORIZONTAL JOINT SPACING SHOULD BE 3/8" TYPICAL.



**American Fiber
Cement Corporation**

(303) 972-5107

www.americanfibercement.com

6901 S Pierce St #180, Littleton, CO 80128

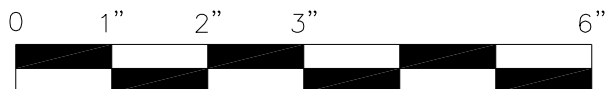
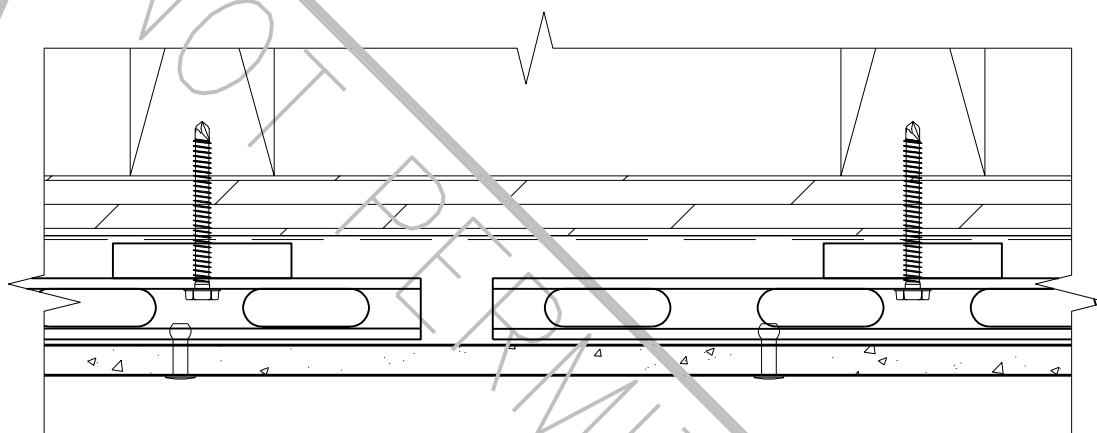
Ref.:

Vertical Joint @
Break in Substrate

Date: 11/19/2021

One-Layer Aluminum Attachment System

XKELEX X-Z19PF GIRT



SCALE: 6"=1'-0"

NOTES:

1. PANEL VERTICAL AND HORIZONTAL JOINT SPACING SHOULD BE 3/8" TYPICAL.



**American Fiber
Cement Corporation**

(303) 972-5107

www.americanfibercement.com

6901 S Pierce St #180, Littleton, CO 80128

Ref.:

**Not Permitted @
Break in Substrate**

Date: 11/19/2021

One-Layer Aluminum Attachment System

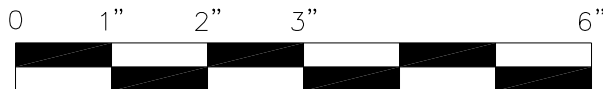
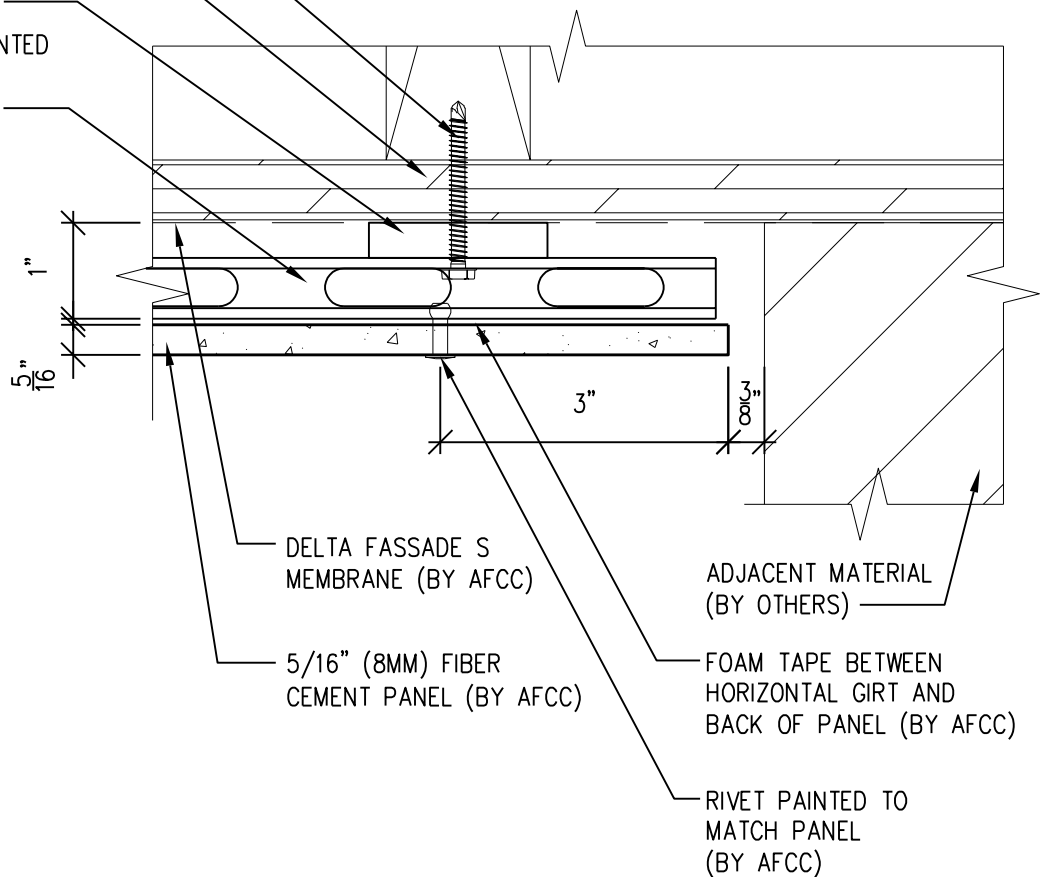
XKELEX X-Z19PF GIRT

PROFILE TO STUD
FASTENER (BY AFCC)

SHEATHING (BY OTHERS)

X-TB19 SPACER
(SUPPLIED BY AFCC)

XKELEX X-Z19PF VENTED
HORIZONTAL GIRT
(SUPPLIED BY AFCC)



SCALE: 6"=1'-0"

NOTES:

1. PANEL VERTICAL AND HORIZONTAL JOINT SPACING SHOULD BE 3/8" TYPICAL.



**American Fiber
Cement Corporation**

(303) 972-5107

www.americanfibercement.com

6901 S Pierce St #180, Littleton, CO 80128

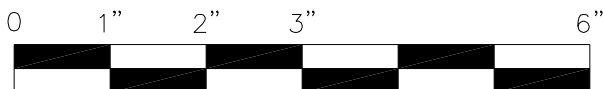
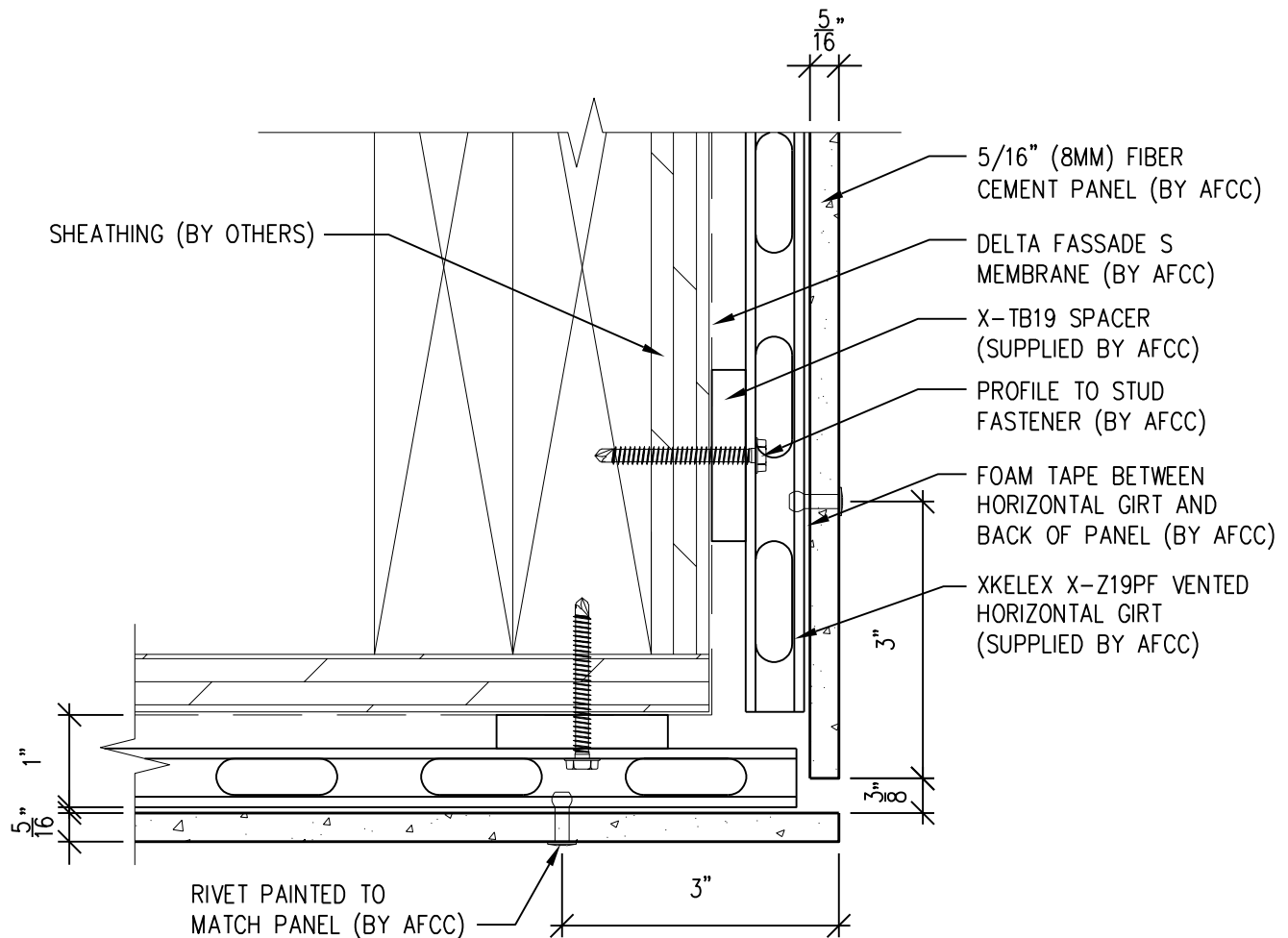
Ref.:

Panel Edge @
Butt Joint

Date: 11/19/2021

One-Layer Aluminum Attachment System

XKELEX X-Z19PF GIRT



SCALE: 6"=1'-0"

NOTES:

1. PANEL VERTICAL AND HORIZONTAL JOINT SPACING SHOULD BE 3/8" TYPICAL.



**American Fiber
Cement Corporation**

(303) 972-5107

www.americanfibercement.com

6901 S Pierce St #180, Littleton, CO 80128

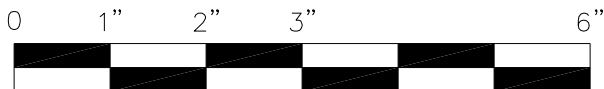
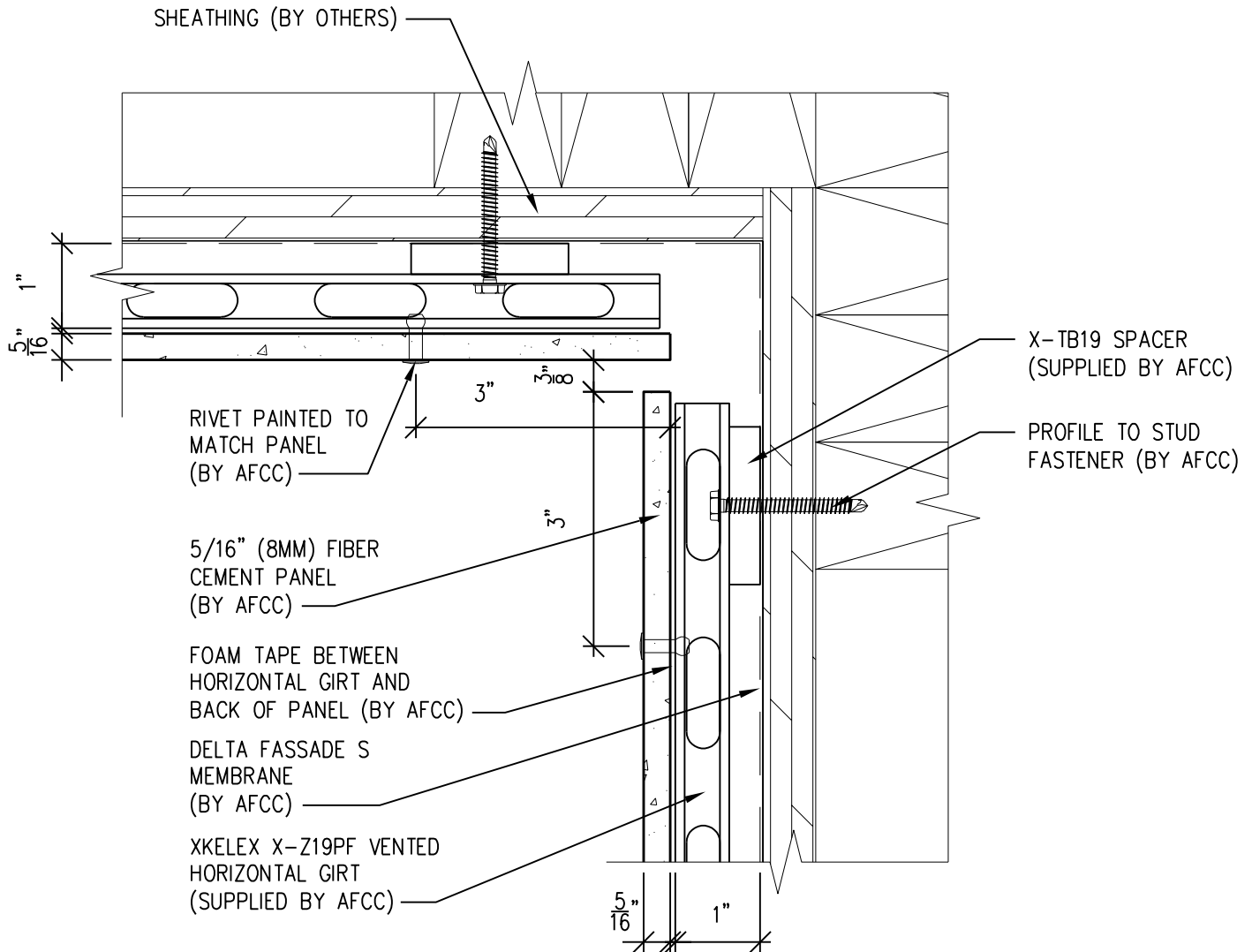
Ref.:

**Panels @
Outside Corner**

Date: 11/19/2021

One-Layer Aluminum Attachment System

XKELEX X-Z19PF GIRT



SCALE: 6"=1'-0"

NOTES:

1. PANEL VERTICAL AND HORIZONTAL JOINT SPACING SHOULD BE 3/8" TYPICAL.



**American Fiber
Cement Corporation**

(303) 972-5107

www.americanfibercement.com

6901 S Pierce St #180, Littleton, CO 80128

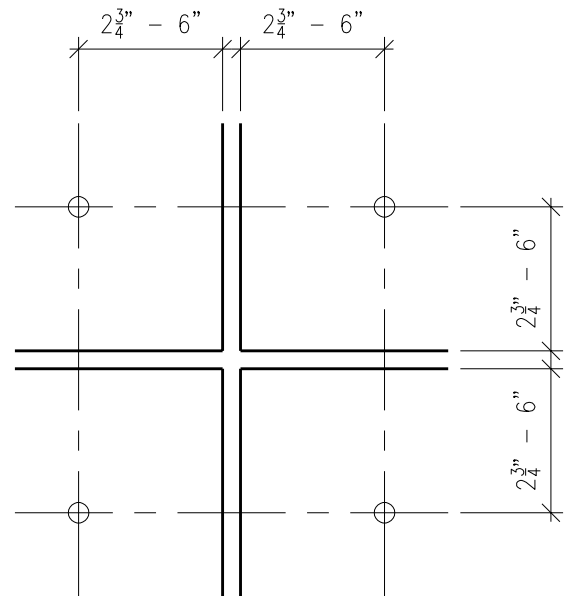
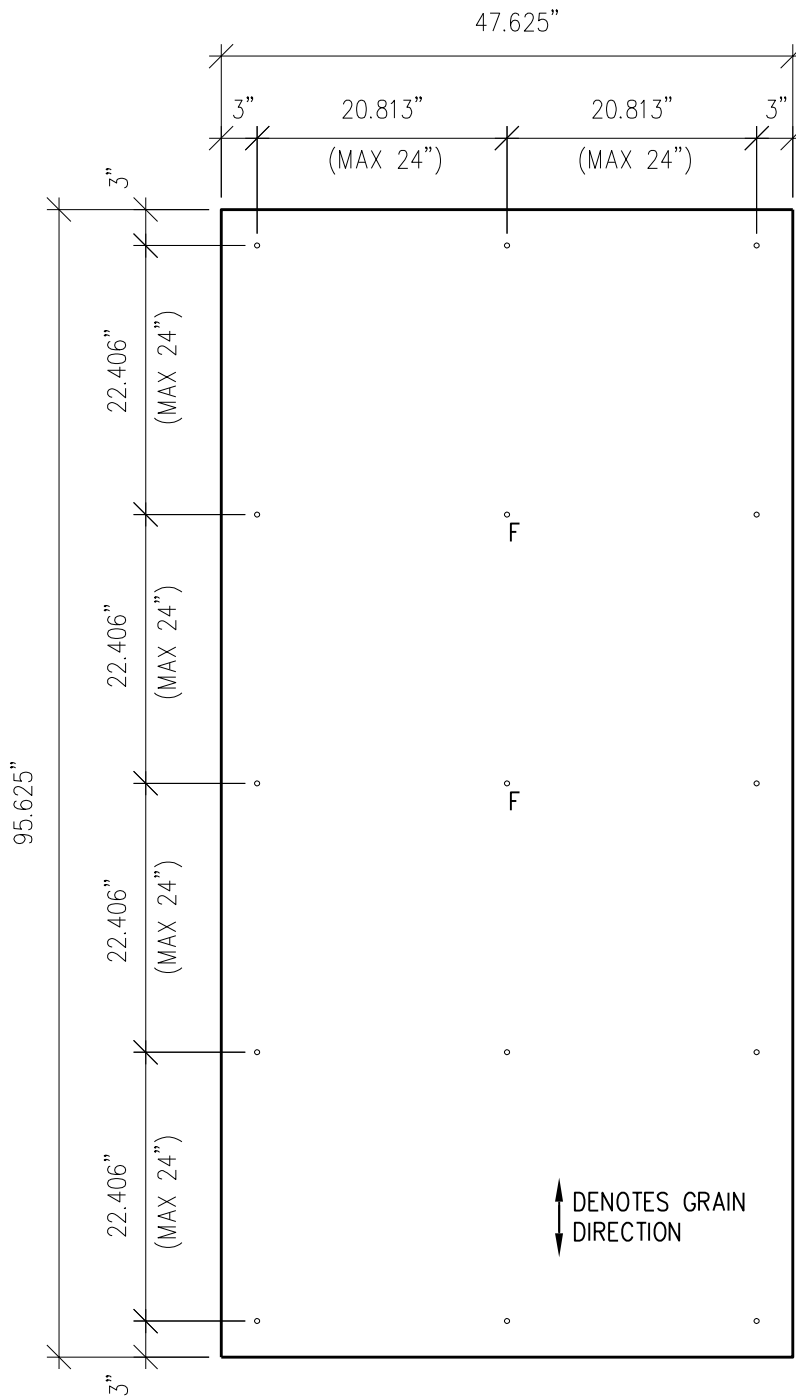
Ref.:

**Panels @
Inside Corner**

Date: 11/19/2021

One-Layer Aluminum Attachment System

XKELEX X-Z19PF GIRT



TYP PANEL EDGE FASTENER

3"=1'-0"

DRILLING KEY:

F = FIXED POINT 21/64"

UNMARKED HOLE = GLIDING POINT 7/16"

NOTES:

- PANEL VERTICAL AND HORIZONTAL JOINT SPACING SHOULD BE 3/8" TYPICAL.



**American Fiber
Cement Corporation**

(303) 972-5107

www.americanfibercement.com

6901 S Pierce St #180, Littleton, CO 80128

Ref.:

Typical
Fastener Layout

Date: 11/19/2021