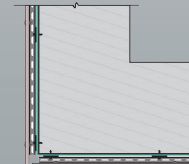
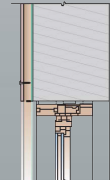
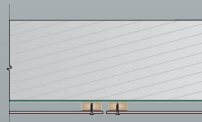
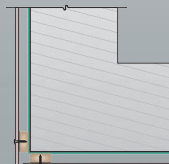
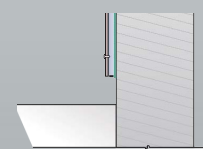
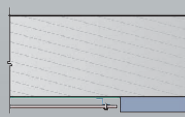
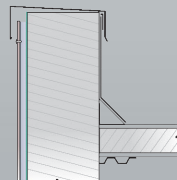
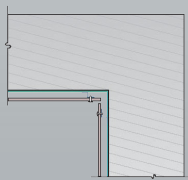
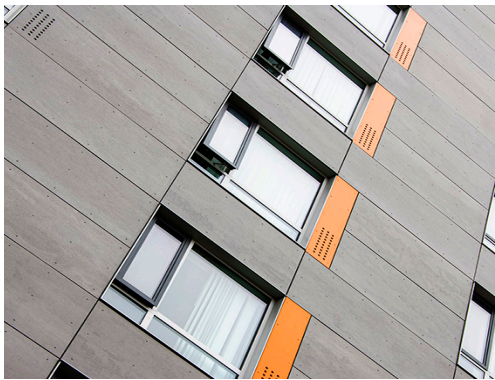


Two-Layer Steel Attachment System with Adhesive





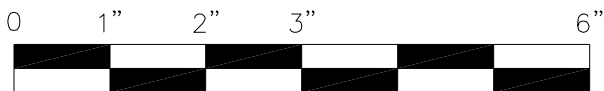
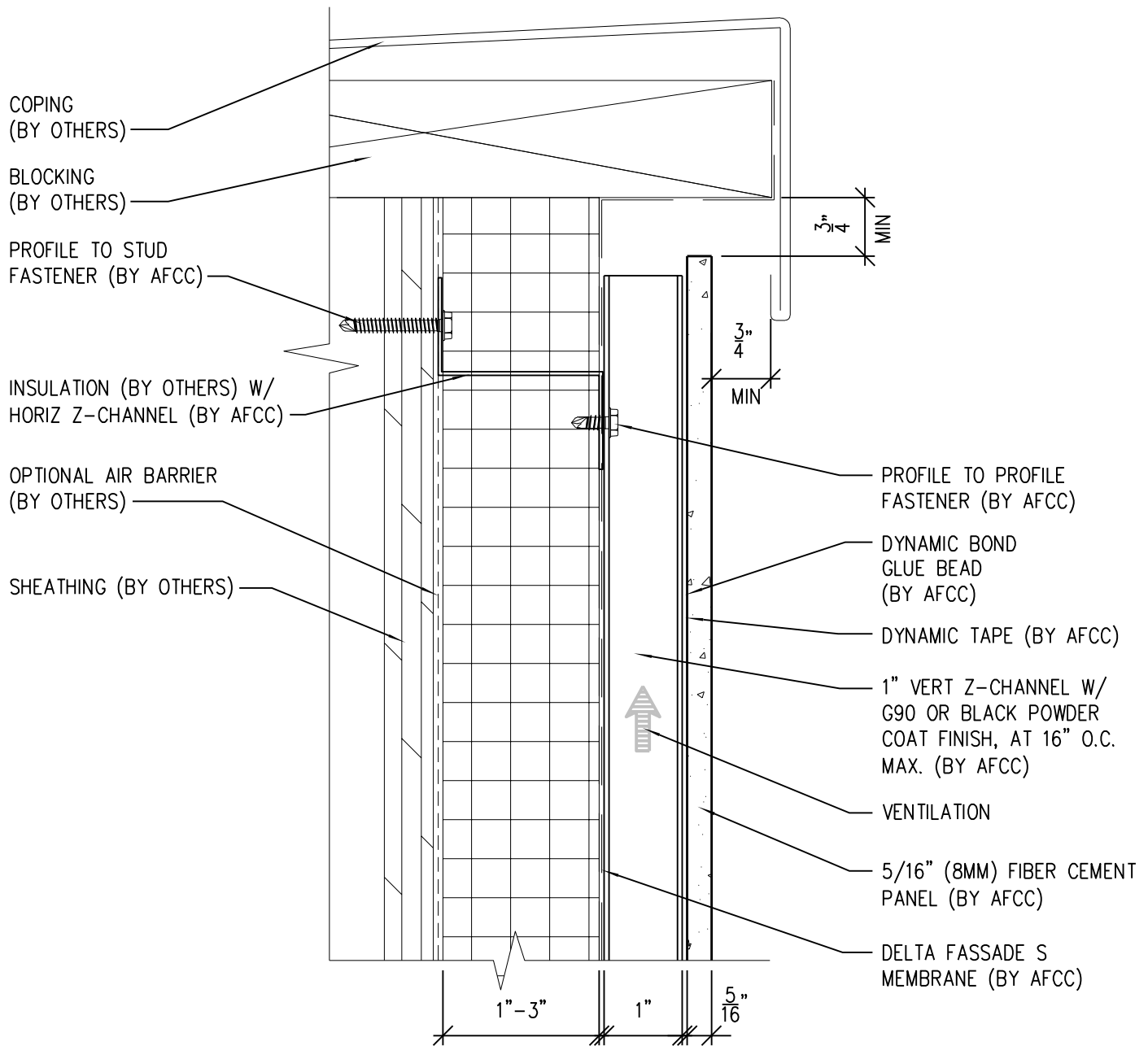
American Fiber Cement Corporation

Typical Details

Page 3:	Top Panel @ Coping
Page 4:	Top Panel @ Soffit
Page 5:	Top of Panel @ F.C.P Soffit
Page 6:	Horizontal Joint @ Continuous Substrate
Page 7:	Horizontal Joint @ Break In Substrate
Page 8:	Not Permitted @ Break in Substrate
Page 9:	Bottom of Panel @ Wall Base
Page 10:	Bottom of Panel @ Open Termination
Page 11:	Bottom of Panel @ Low Roof Flashing
Page 12:	Bottom of Panel @ Soffit
Page 13:	Bottom of Panel @ Soffit (Alternate)
Page 14:	Bottom of Panel @ F.C.P Soffit
Page 15:	Bottom of Panel @ F.C.P Soffit (Alternate)
Page 16:	Soffit Termination @ Adjacent Material
Page 17:	Bottom of Panel @ Window Head
Page 18:	Bottom of Panel @ Window Head (Alternate)
Page 19:	Top of Panel @ Window Sill
Page 20:	Panel Edge @ Window Jamb
Page 21:	Panel Edge @ Window Jamb (Alternate)
Page 22:	Vertical Panel Joint Option 1
Page 23:	Vertical Panel Joint Option 2
Page 24:	Panel Edge @ Butt Joint
Page 25:	Panels @ Outside Corner
Page 26:	Panels @ Inside Corner
Page 27:	Dynamic Bond Typical Detail

Two-Layer Steel Attachment System

with Dynamic Bond Adhesive Fastening



SCALE: 6"=1'-0"

NOTES:

1. PANEL VERTICAL AND HORIZONTAL JOINT SPACING SHOULD BE 3/8" TYPICAL.



**American Fiber
Cement Corporation**

(303) 972-5107

www.americanfibercement.com

6901 S Pierce St #180, Littleton, CO 80128

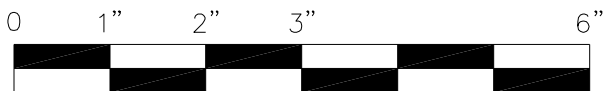
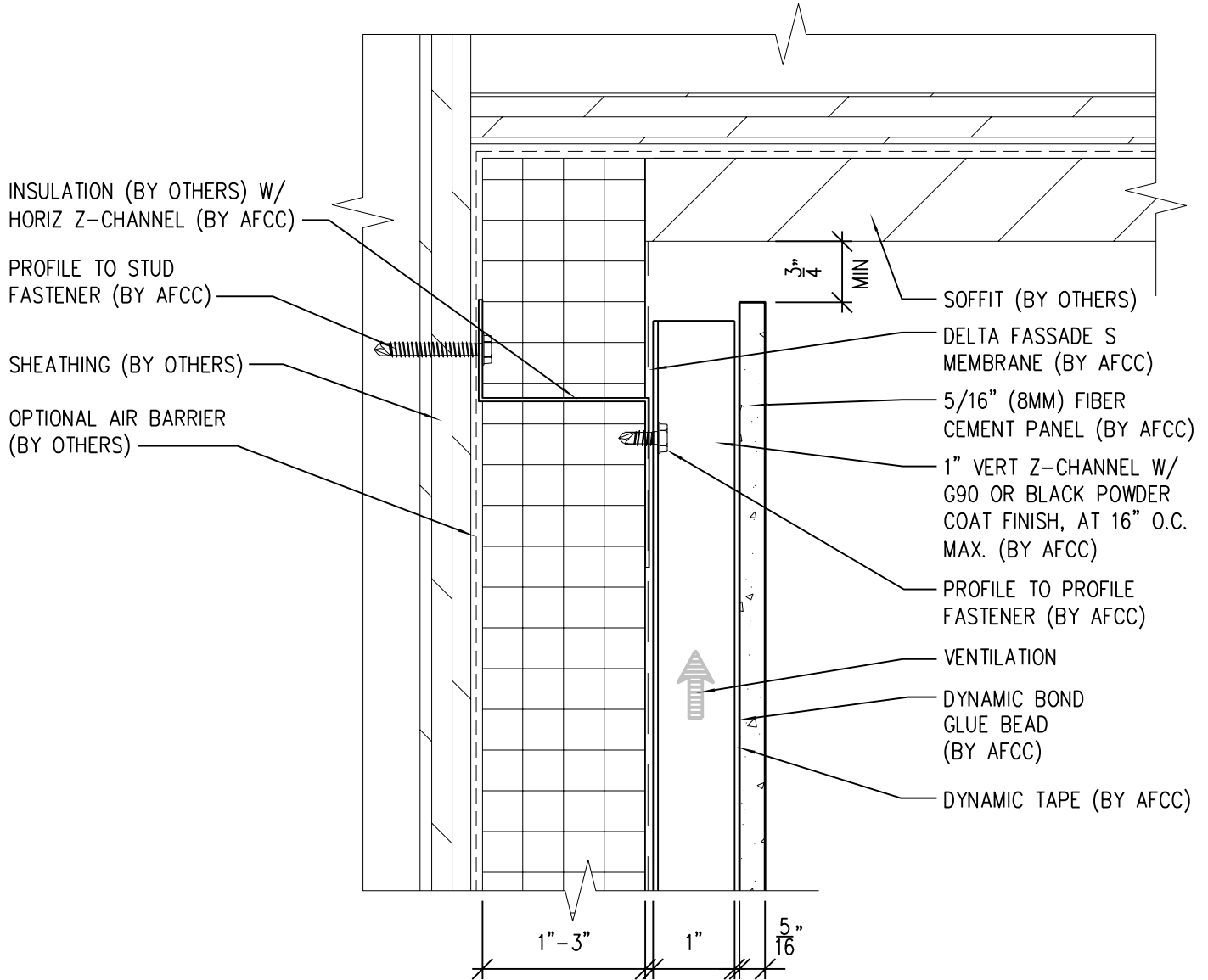
Ref.:

Top of Panel @
Coping

Date: 11/26/2021

Two-Layer Steel Attachment System

with Dynamic Bond Adhesive Fastening



SCALE: 6"=1'-0"

NOTES:

1. PANEL VERTICAL AND HORIZONTAL JOINT SPACING SHOULD BE 3/8" TYPICAL.



**American Fiber
Cement Corporation**

(303) 972-5107

www.americanfibercement.com

6901 S Pierce St #180, Littleton, CO 80128

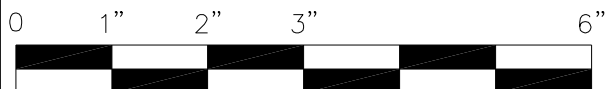
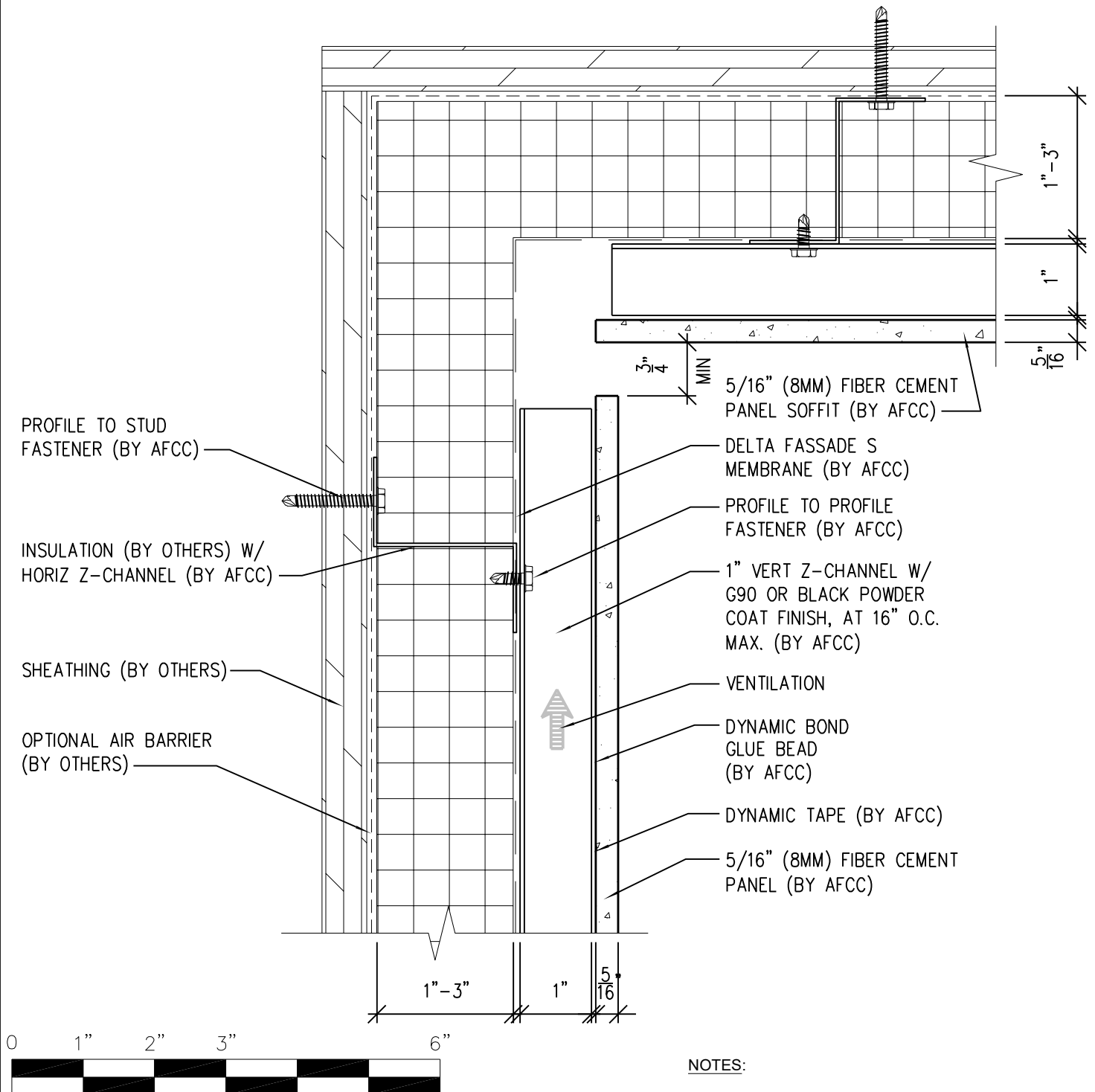
Ref.:

Top of Panel @
Soffit

Date: 11/26/2021

Two-Layer Steel Attachment System

with Dynamic Bond Adhesive Fastening



SCALE: 6"=1'-0"

NOTES:

1. PANEL VERTICAL AND HORIZONTAL JOINT SPACING SHOULD BE 3/8" TYPICAL.



**American Fiber
Cement Corporation**

(303) 972-5107

www.americanfibercement.com

6901 S Pierce St #180, Littleton, CO 80128

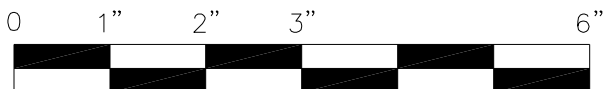
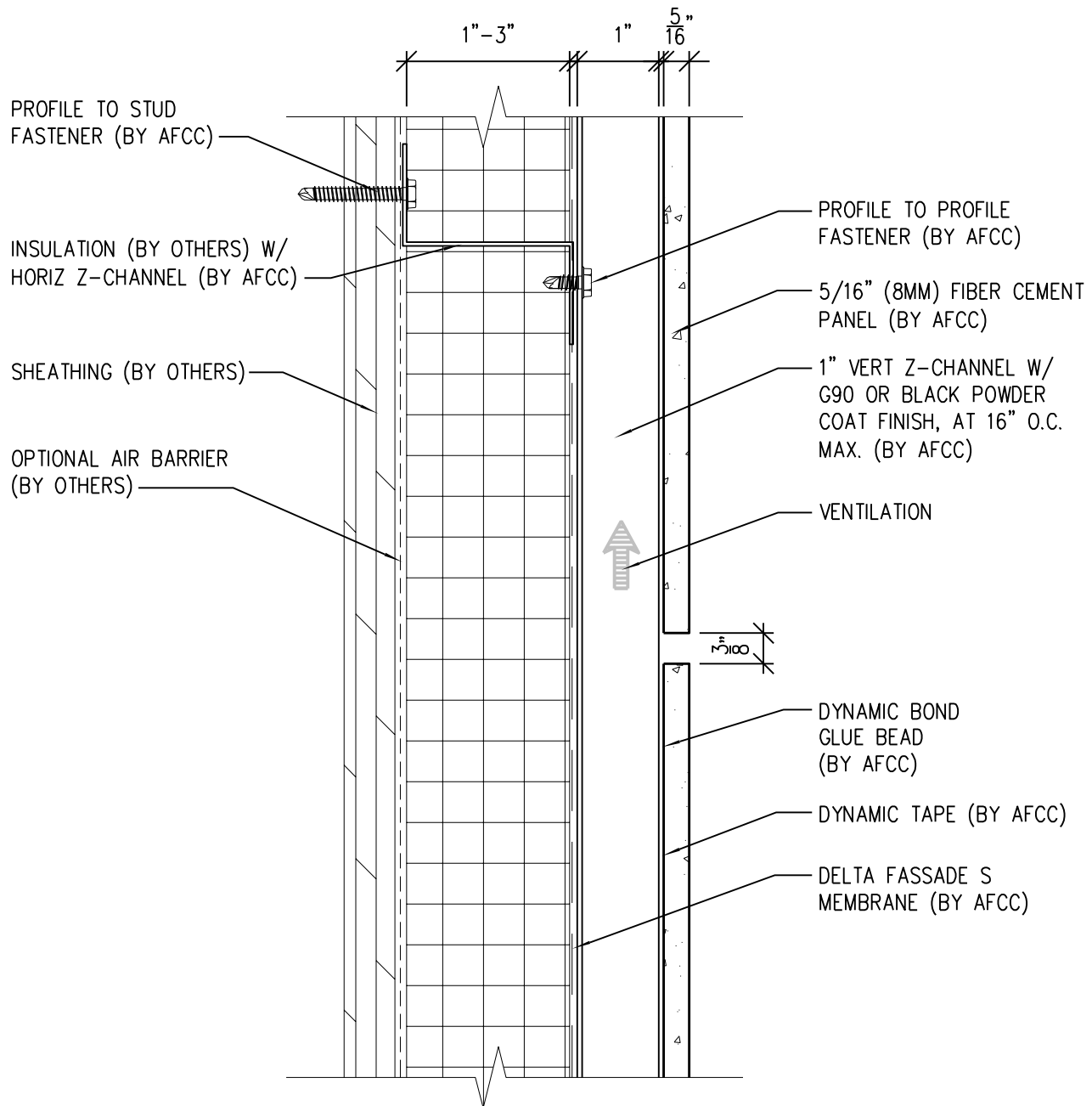
Ref.:

Top of Panel @
F.C.P. Soffit

Date: 11/26/2021

Two-Layer Steel Attachment System

with Dynamic Bond Adhesive Fastening



SCALE: 6"=1'-0"

NOTES:

1. PANEL VERTICAL AND HORIZONTAL JOINT SPACING SHOULD BE 3/8" TYPICAL.



**American Fiber
Cement Corporation**

(303) 972-5107

www.americanfibercement.com

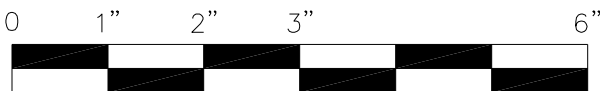
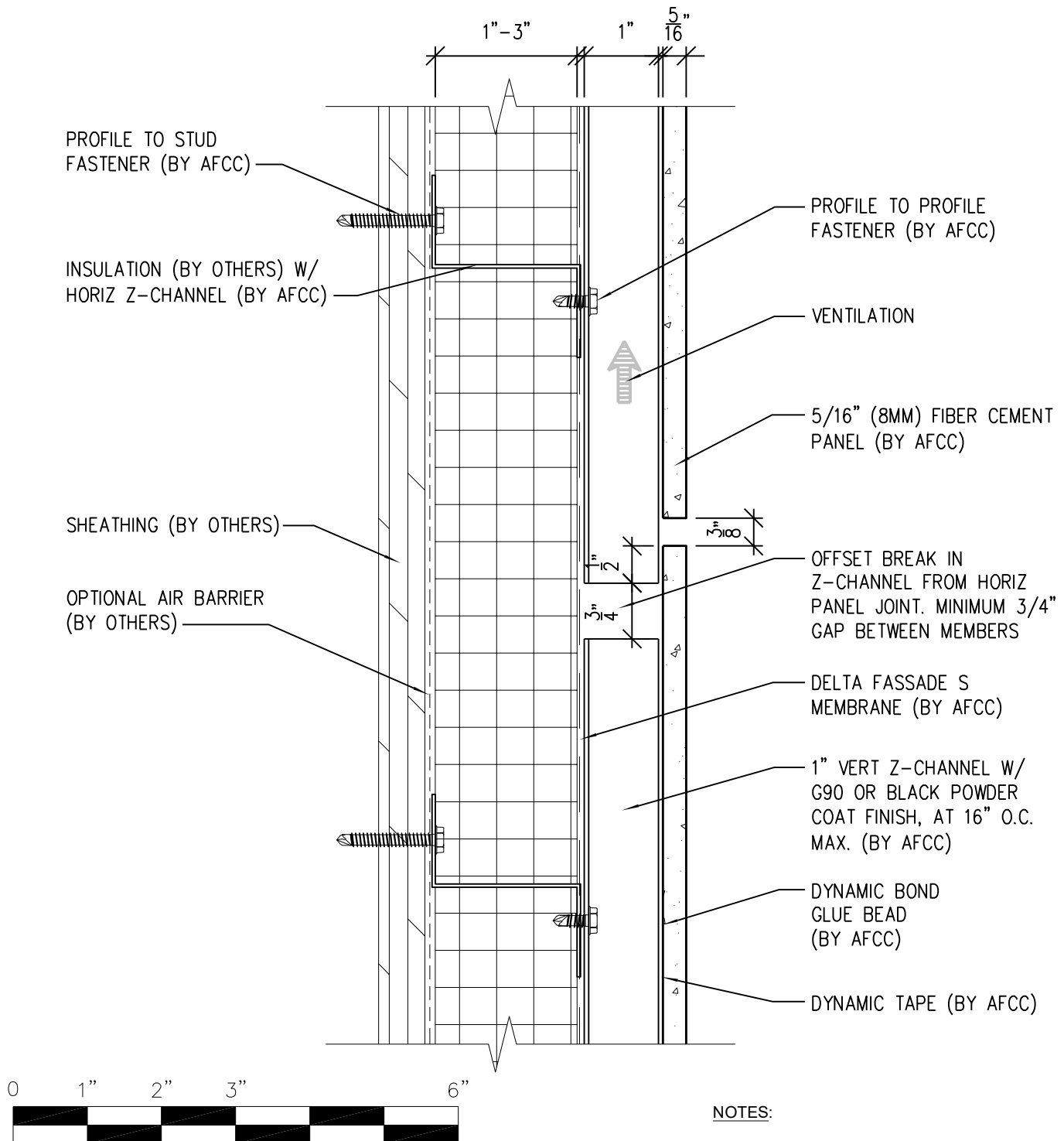
6901 S Pierce St #180, Littleton, CO 80128

Ref.:

Horizontal Joint @
Continuous Substrate

Date: 11/26/2021

Two-Layer Steel Attachment System with Dynamic Bond Adhesive Fastening



SCALE: 6"=1'-0"

NOTES:

1. PANEL VERTICAL AND HORIZONTAL JOINT SPACING SHOULD BE 3/8" TYPICAL.



**American Fiber
Cement Corporation**

(303) 972-5107

www.americanfibercement.com

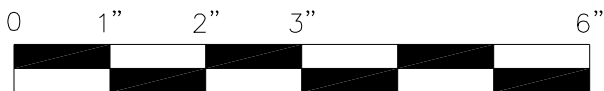
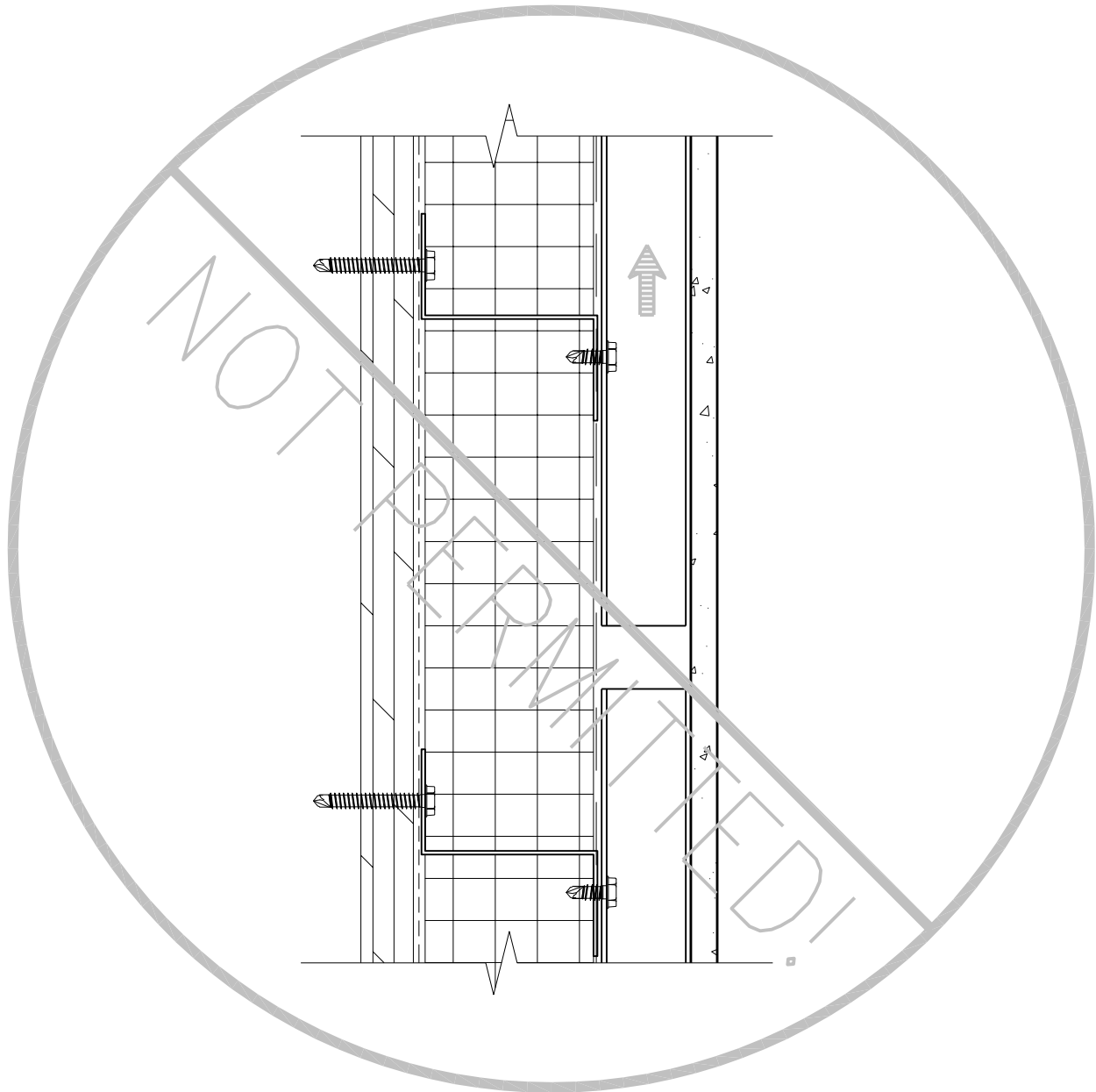
6901 S Pierce St #180, Littleton, CO 80128

Ref.:

**Horizontal Joint @
Break in Substrate**

Date: 11/26/2021

Two-Layer Steel Attachment System with Dynamic Bond Adhesive Fastening



SCALE: 6"=1'-0"

NOTES:

1. PANEL VERTICAL AND HORIZONTAL JOINT SPACING SHOULD BE 3/8" TYPICAL.



**American Fiber
Cement Corporation**

(303) 972-5107

www.americanfibercement.com

6901 S Pierce St #180, Littleton, CO 80128

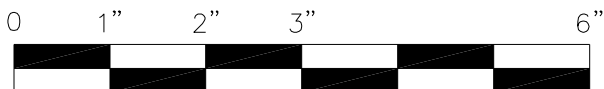
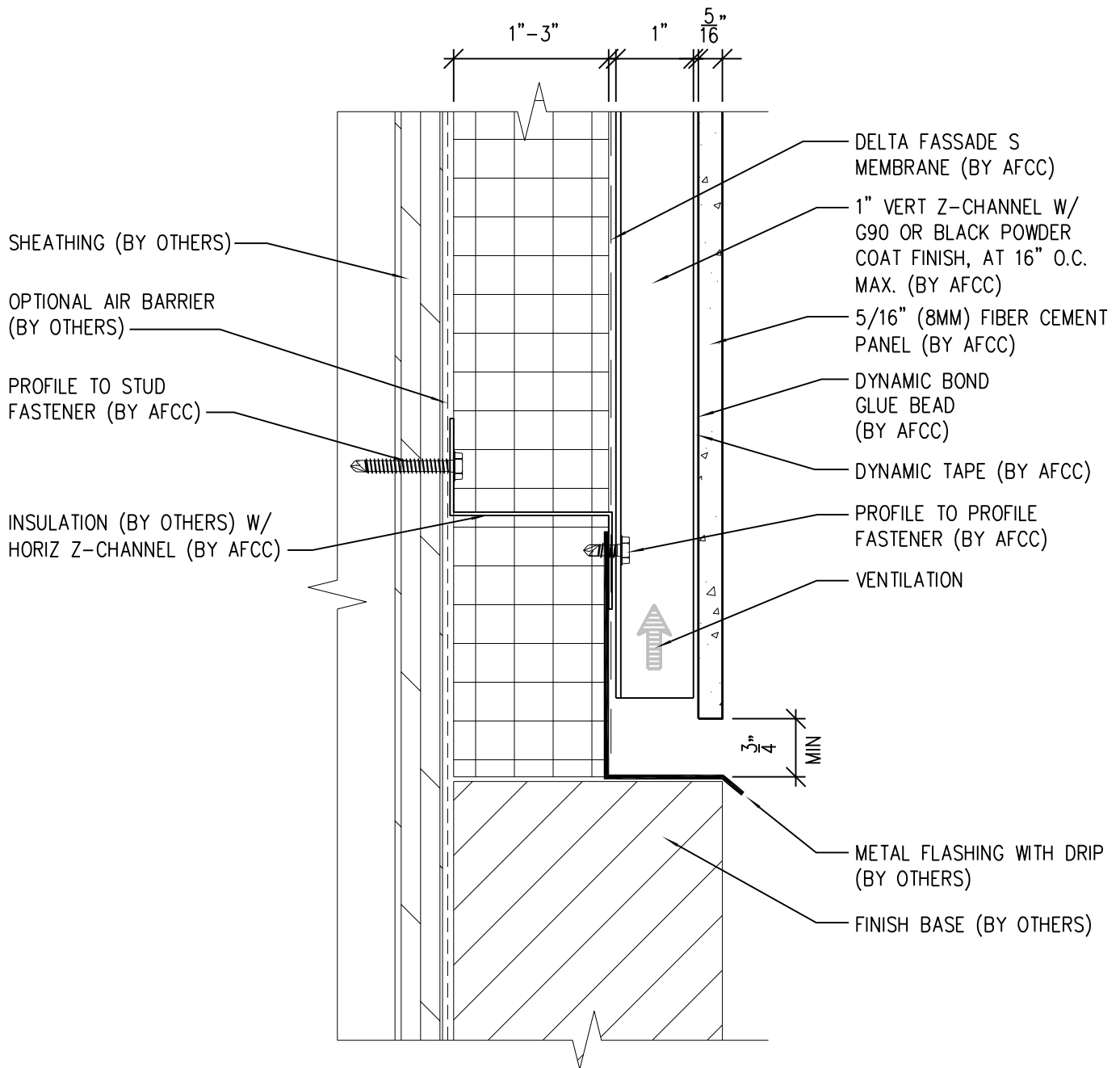
Ref.:

**Not Permitted @
Break in Substrate**

Date: 11/26/2021

Two-Layer Steel Attachment System

with Dynamic Bond Adhesive Fastening



SCALE: 6"=1'-0"

NOTES:

1. PANEL VERTICAL AND HORIZONTAL JOINT SPACING SHOULD BE 3/8" TYPICAL.



**American Fiber
Cement Corporation**

(303) 972-5107

www.americanfibercement.com

6901 S Pierce St #180, Littleton, CO 80128

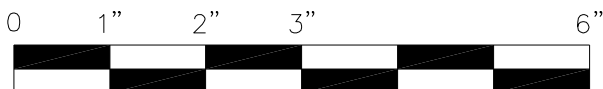
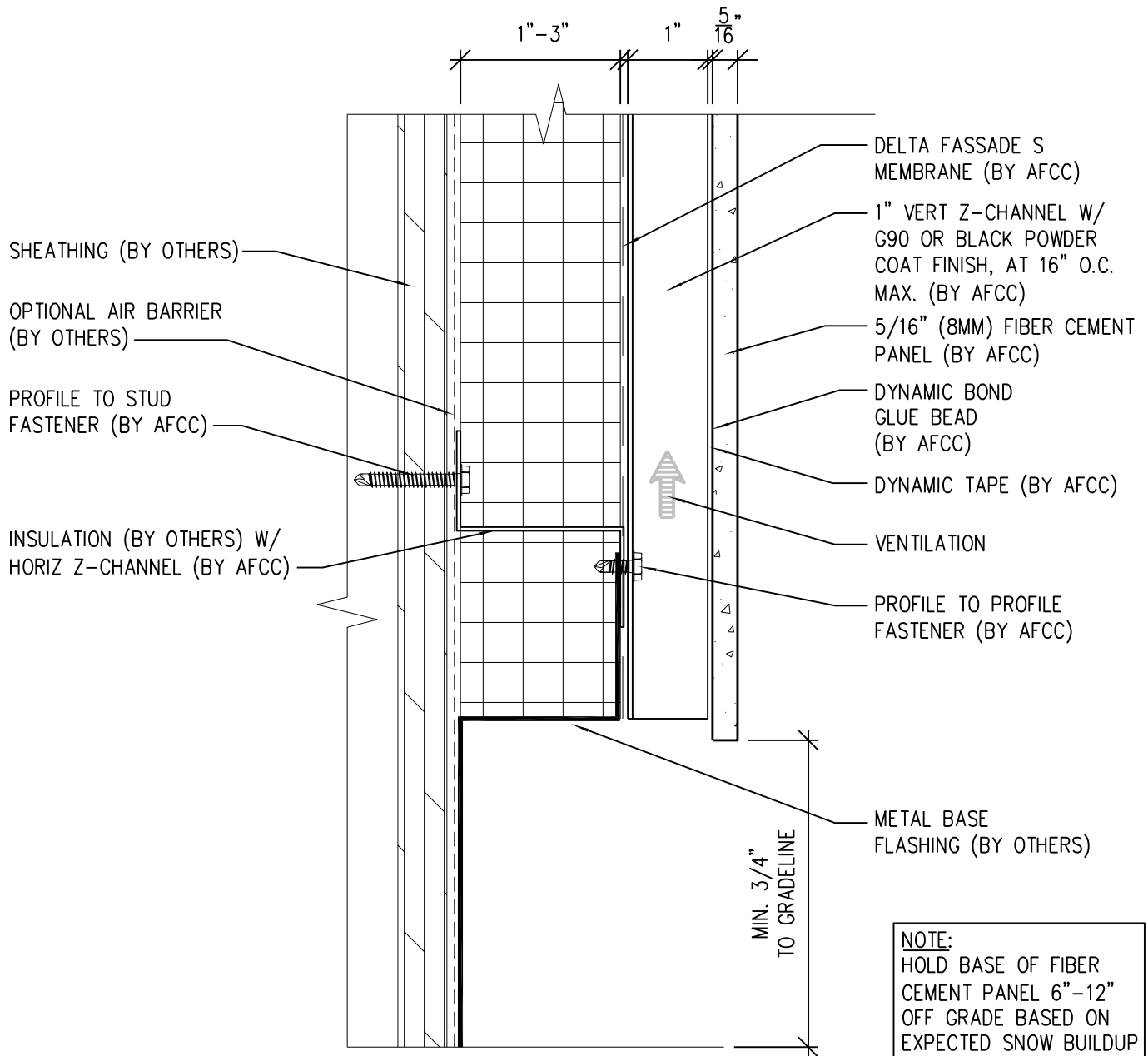
Ref.:

Bottom of Panel @
Wall Base

Date: 11/26/2021

Two-Layer Steel Attachment System

with Dynamic Bond Adhesive Fastening



SCALE: 6"=1'-0"

NOTES:

1. PANEL VERTICAL AND HORIZONTAL JOINT SPACING SHOULD BE 3/8" TYPICAL.



**American Fiber
Cement Corporation**

(303) 972-5107

www.americanfibercement.com

6901 S Pierce St #180, Littleton, CO 80128

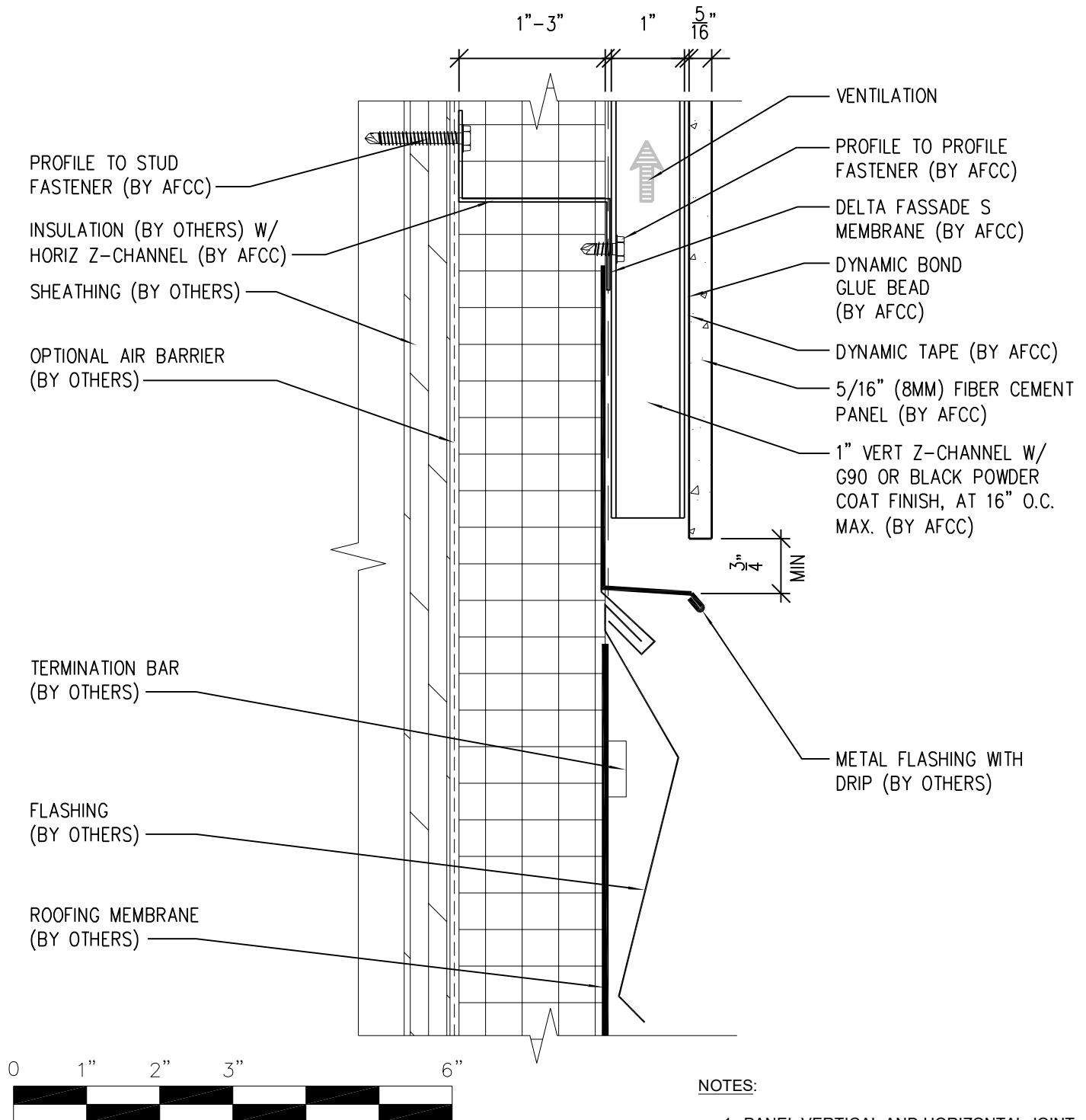
Ref.:

Bottom of Panel @
Open Termination

Date: 11/26/2021

Two-Layer Steel Attachment System

with Dynamic Bond Adhesive Fastening



**American Fiber
Cement Corporation**

(303) 972-5107

www.americanfibercement.com

6901 S Pierce St #180, Littleton, CO 80128

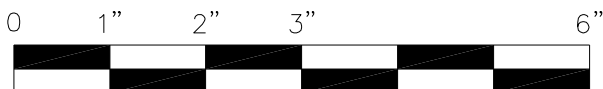
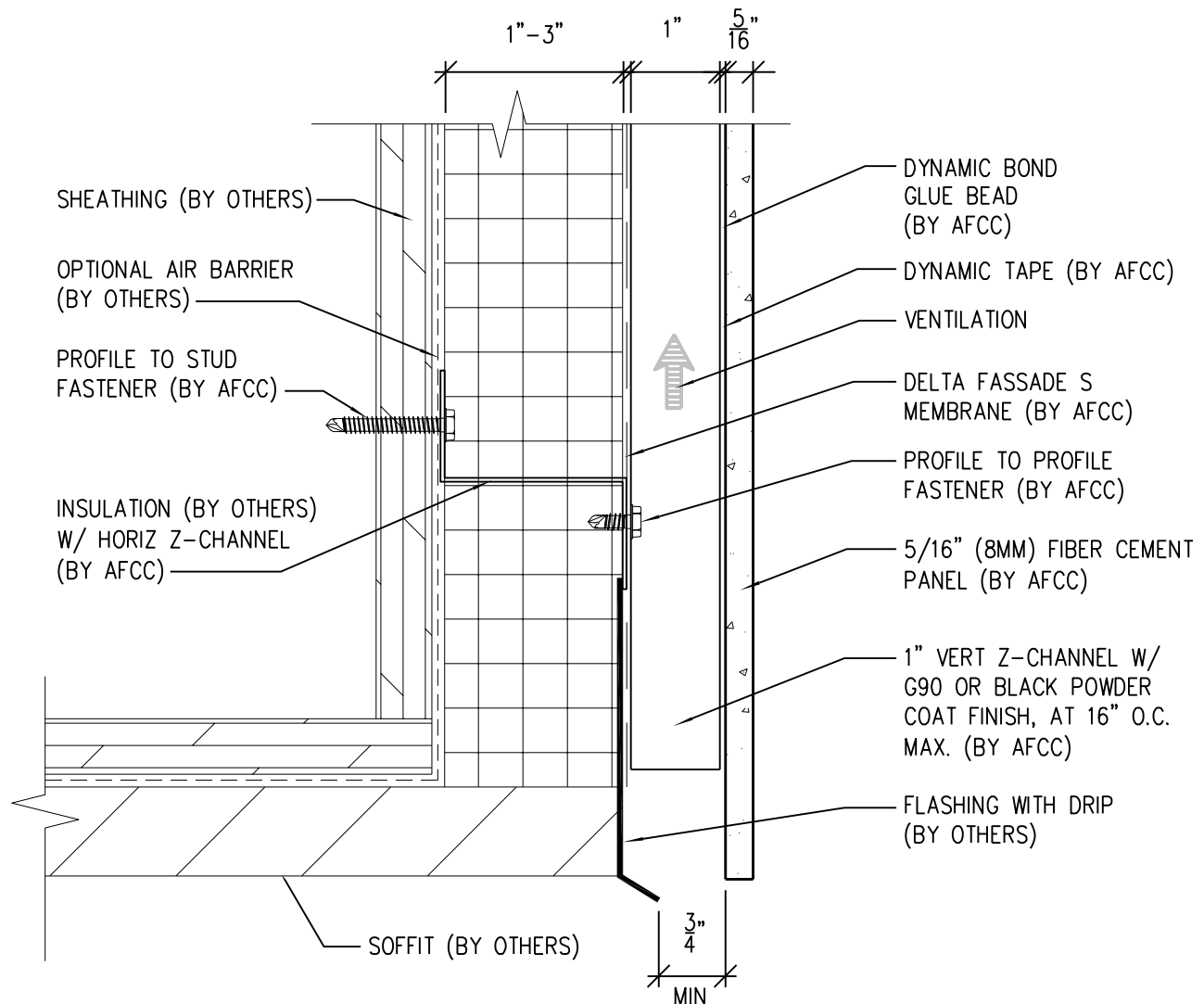
Ref.:

Bottom of Panel @
Low Roof Flashing

Date: 11/26/2021

Two-Layer Steel Attachment System

with Dynamic Bond Adhesive Fastening



SCALE: 6"=1'-0"

NOTES:

1. PANEL VERTICAL AND HORIZONTAL JOINT SPACING SHOULD BE 3/8" TYPICAL.



**American Fiber
Cement Corporation**

(303) 972-5107

www.americanfibercement.com

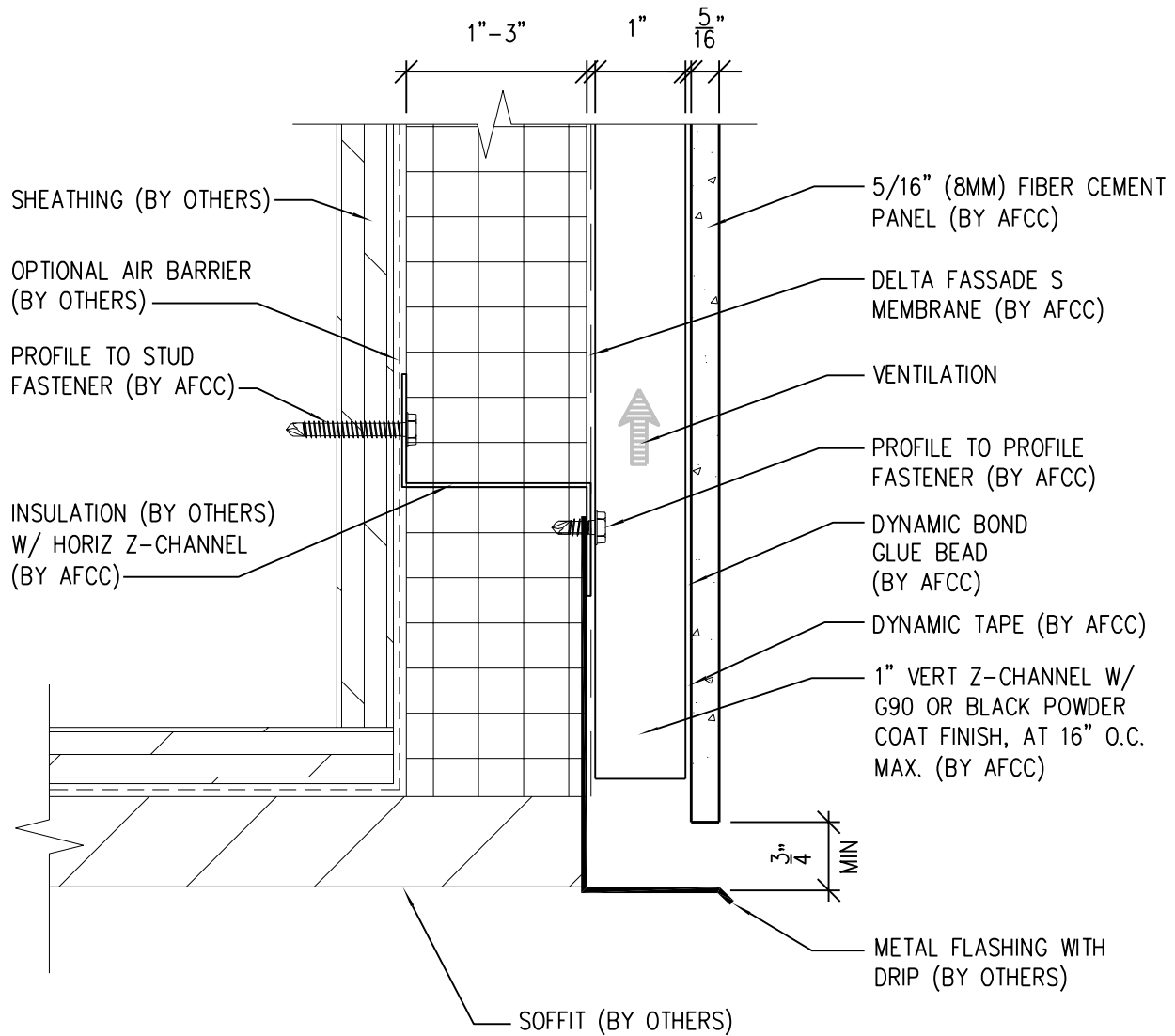
6901 S Pierce St #180, Littleton, CO 80128

Ref.:

Bottom of Panel @
Sofit

Date: 11/26/2021

Two-Layer Steel Attachment System with Dynamic Bond Adhesive Fastening



SCALE: 6"=1'-0"

NOTES:

1. PANEL VERTICAL AND HORIZONTAL JOINT SPACING SHOULD BE 3/8" TYPICAL.



**American Fiber
Cement Corporation**

(303) 972-5107

www.americanfibercement.com

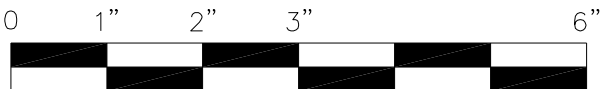
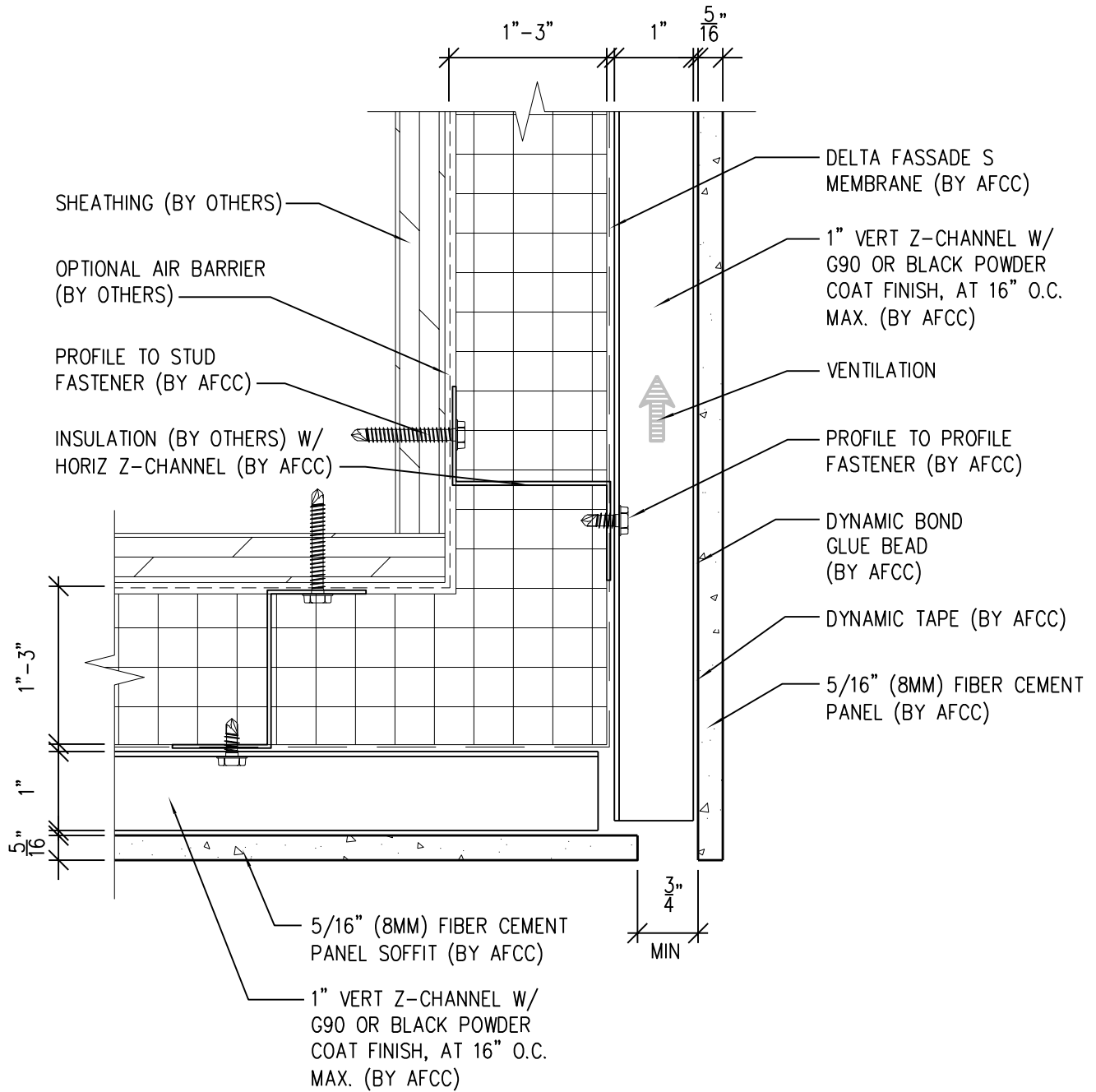
6901 S Pierce St #180, Littleton, CO 80128

Ref.:

Bottom of Panel @
Sofit (Alternate)

Date: 11/26/2021

with Dynamic Bond Adhesive Fastening



SCALE: 6"=1'-0"

NOTES:

1. PANEL VERTICAL AND HORIZONTAL JOINT SPACING SHOULD BE 3/8" TYPICAL.



**American Fiber
Cement Corporation**

(303) 972-5107

www.americanfibercement.com

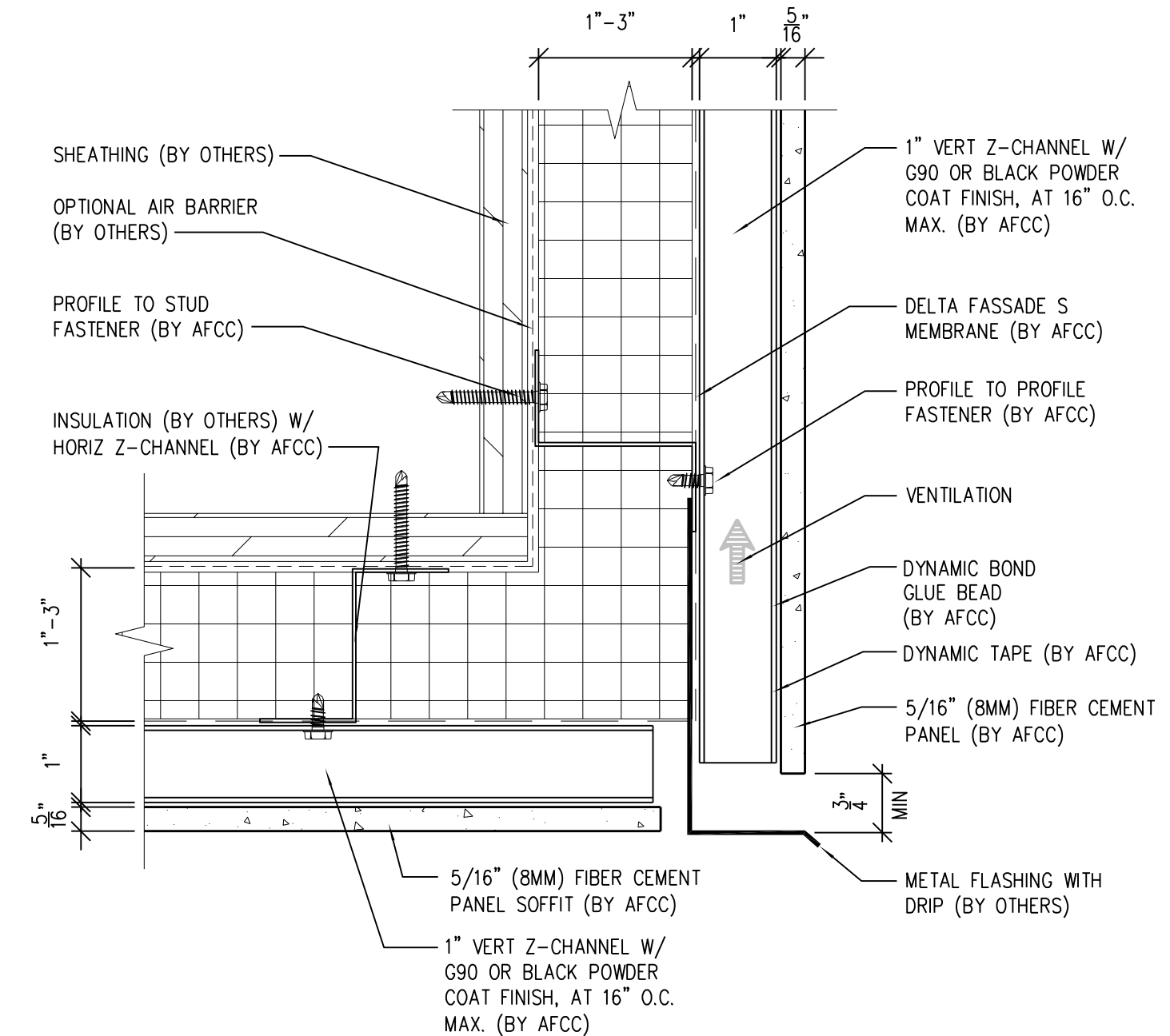
6901 S Pierce St #180, Littleton, CO 80128

Ref.:

Bottom of Panel @
F.C.P. Soffit

Date: 11/26/2021

with Dynamic Bond Adhesive Fastening



SCALE: 6"=1'-0"

NOTES:

1. PANEL VERTICAL AND HORIZONTAL JOINT SPACING SHOULD BE 3/8" TYPICAL.



**American Fiber
Cement Corporation**

(303) 972-5107

www.americanfibercement.com

6901 S Pierce St #180, Littleton, CO 80128

Ref.:

Bottom of Panel @
F.C.P. Soffit (Alternate)

Date: 11/26/2021

Two-Layer Steel Attachment System

with Dynamic Bond Adhesive Fastening

INSULATION (BY OTHERS)
W/ HORIZ Z-CHANNEL
(BY AFCC)

SHEATHING (BY OTHERS)

1" VERT Z-CHANNEL W/
G90 OR BLACK POWDER
COAT FINISH, AT 16" O.C.
MAX. (BY AFCC)

PROFILE TO STUD
FASTENER (BY AFCC)

OPTIONAL AIR BARRIER
(BY OTHERS)

DELTA FASSADE S
MEMBRANE (BY AFCC)

3"
8"

ADJACENT MATERIAL
(BY OTHERS)

5/16" (8MM) FIBER CEMENT
PANEL SOFFIT (BY AFCC)

DYNAMIC TAPE (BY AFCC)

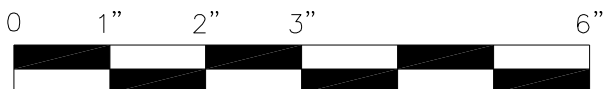
DYNAMIC BOND
GLUE BEAD
(BY AFCC)

PROFILE TO PROFILE
FASTENER (BY AFCC)

1" - 3"

1"

5/16"



SCALE: 6" = 1' - 0"

NOTES:

1. PANEL VERTICAL AND HORIZONTAL JOINT SPACING SHOULD BE 3/8" TYPICAL.



**American Fiber
Cement Corporation**

(303) 972-5107

www.americanfibercement.com

6901 S Pierce St #180, Littleton, CO 80128

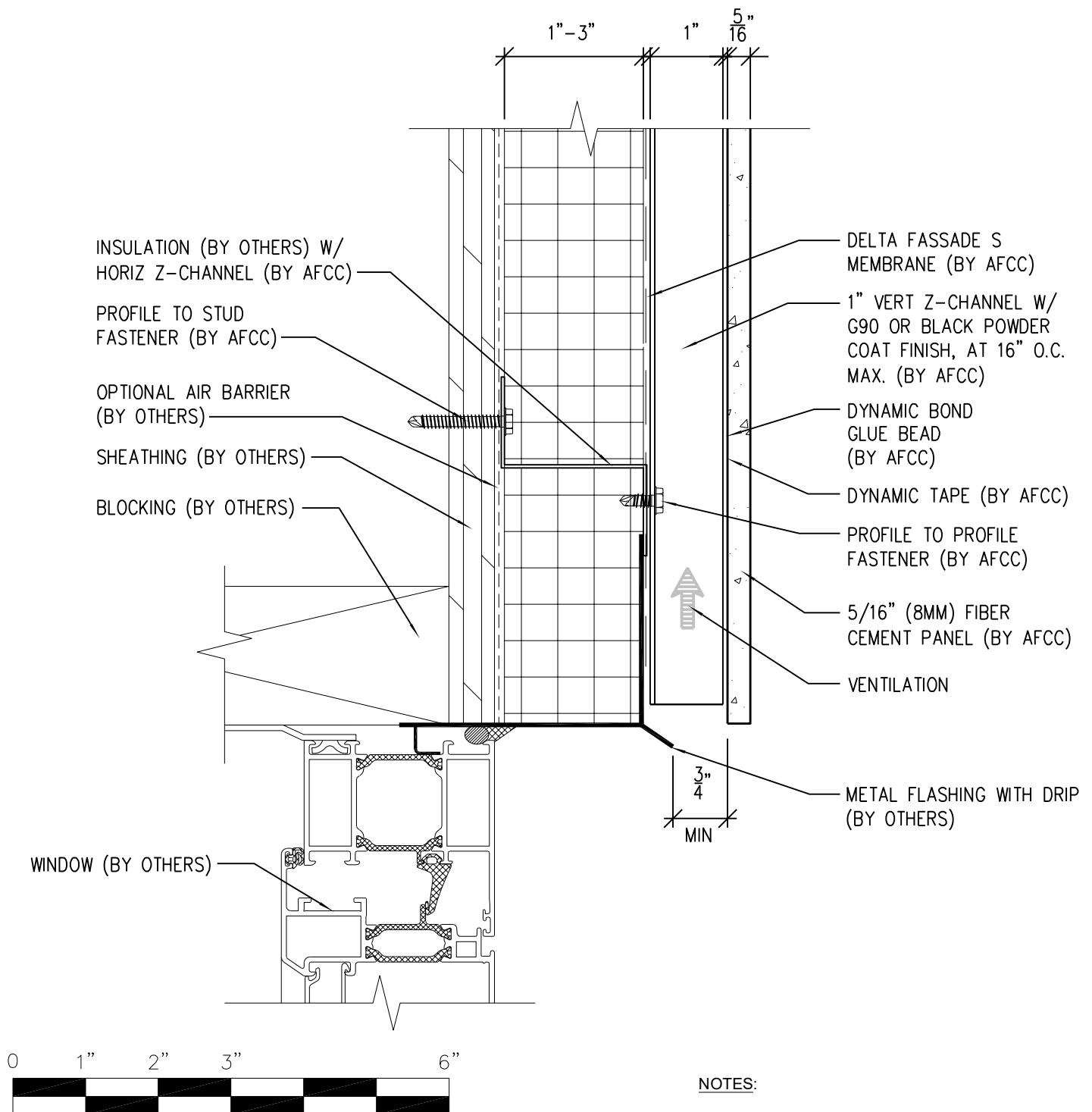
Ref.:

**Soffit Termination @
Adjacent Material**

Date: 11/26/2021

Two-Layer Steel Attachment System

with Dynamic Bond Adhesive Fastening



SCALE: 6"=1'-0"

NOTES:

1. PANEL VERTICAL AND HORIZONTAL JOINT SPACING SHOULD BE 3/8" TYPICAL.



**American Fiber
Cement Corporation**

(303) 972-5107

www.americanfibercement.com

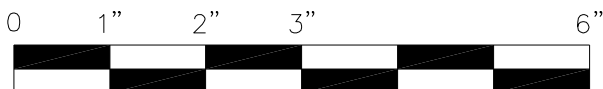
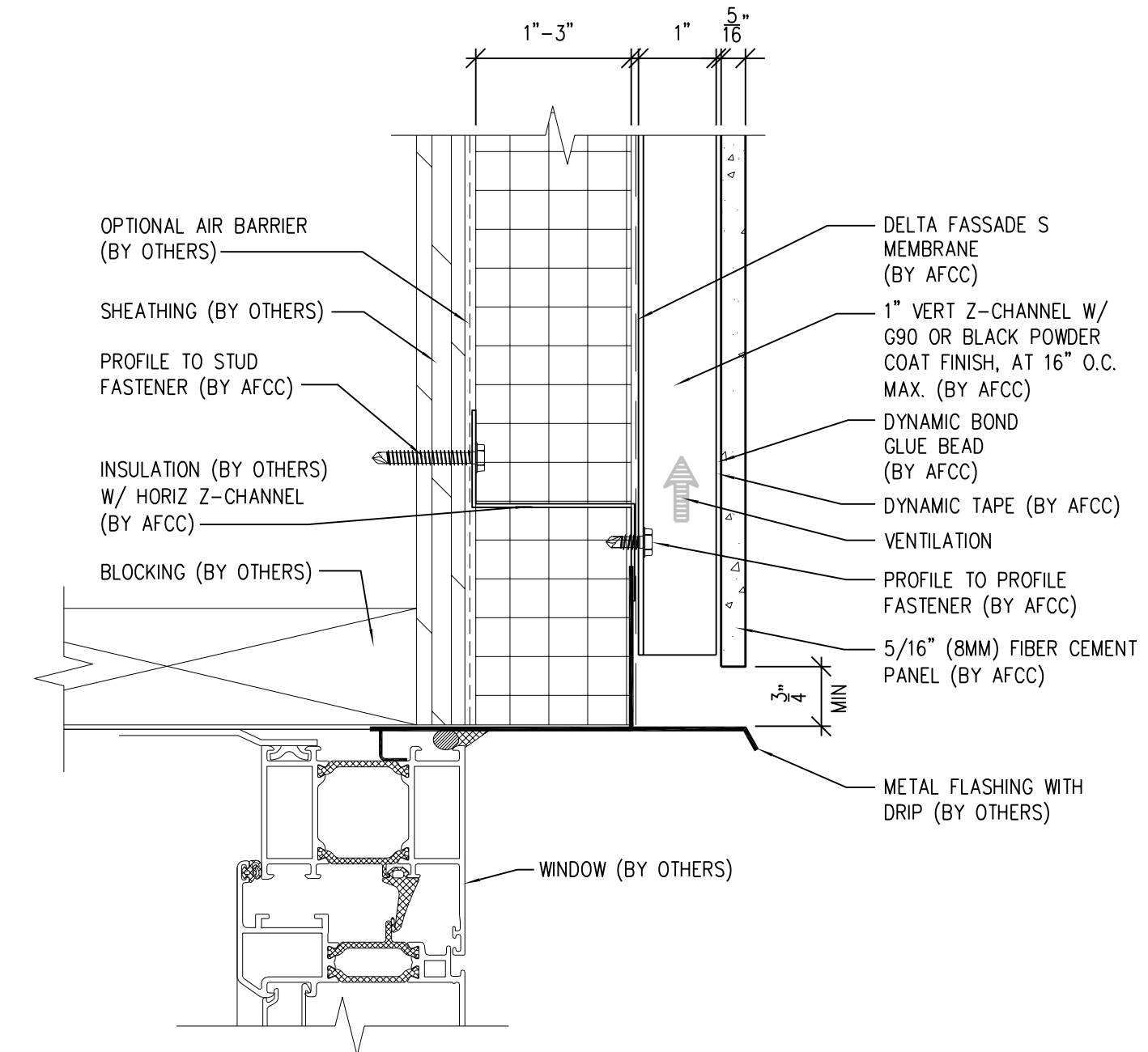
6901 S Pierce St #180, Littleton, CO 80128

Ref.:

Bottom of Panel @
Window Head

Date: 11/26/2021

Two-Layer Steel Attachment System with Dynamic Bond Adhesive Fastening



SCALE: 6"=1'-0"

NOTES:

1. PANEL VERTICAL AND HORIZONTAL JOINT SPACING SHOULD BE 3/8" TYPICAL.



**American Fiber
Cement Corporation**

(303) 972-5107

www.americanfibercement.com

6901 S Pierce St #180, Littleton, CO 80128

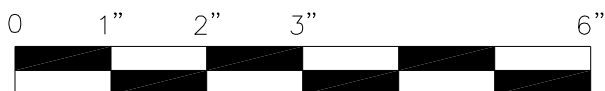
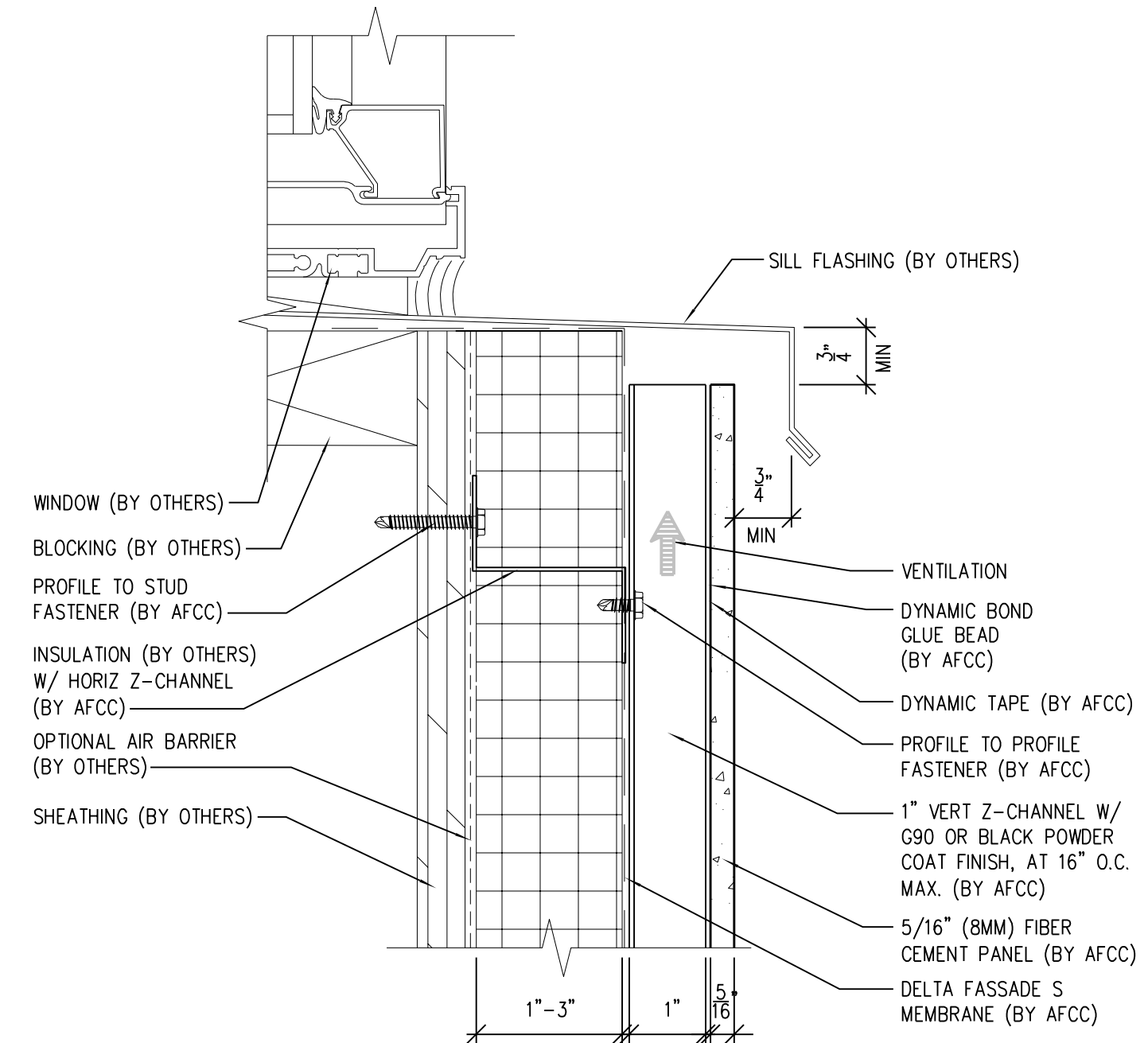
Ref.:

Bottom of Panel @
Window Head (Alternate)

Date: 11/26/2021

Two-Layer Steel Attachment System

with Dynamic Bond Adhesive Fastening



SCALE: 6"=1'-0"

NOTES:

1. PANEL VERTICAL AND HORIZONTAL JOINT SPACING SHOULD BE 3/8" TYPICAL.



**American Fiber
Cement Corporation**

(303) 972-5107

www.americanfibercement.com

6901 S Pierce St #180, Littleton, CO 80128

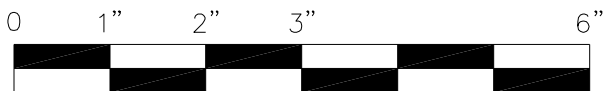
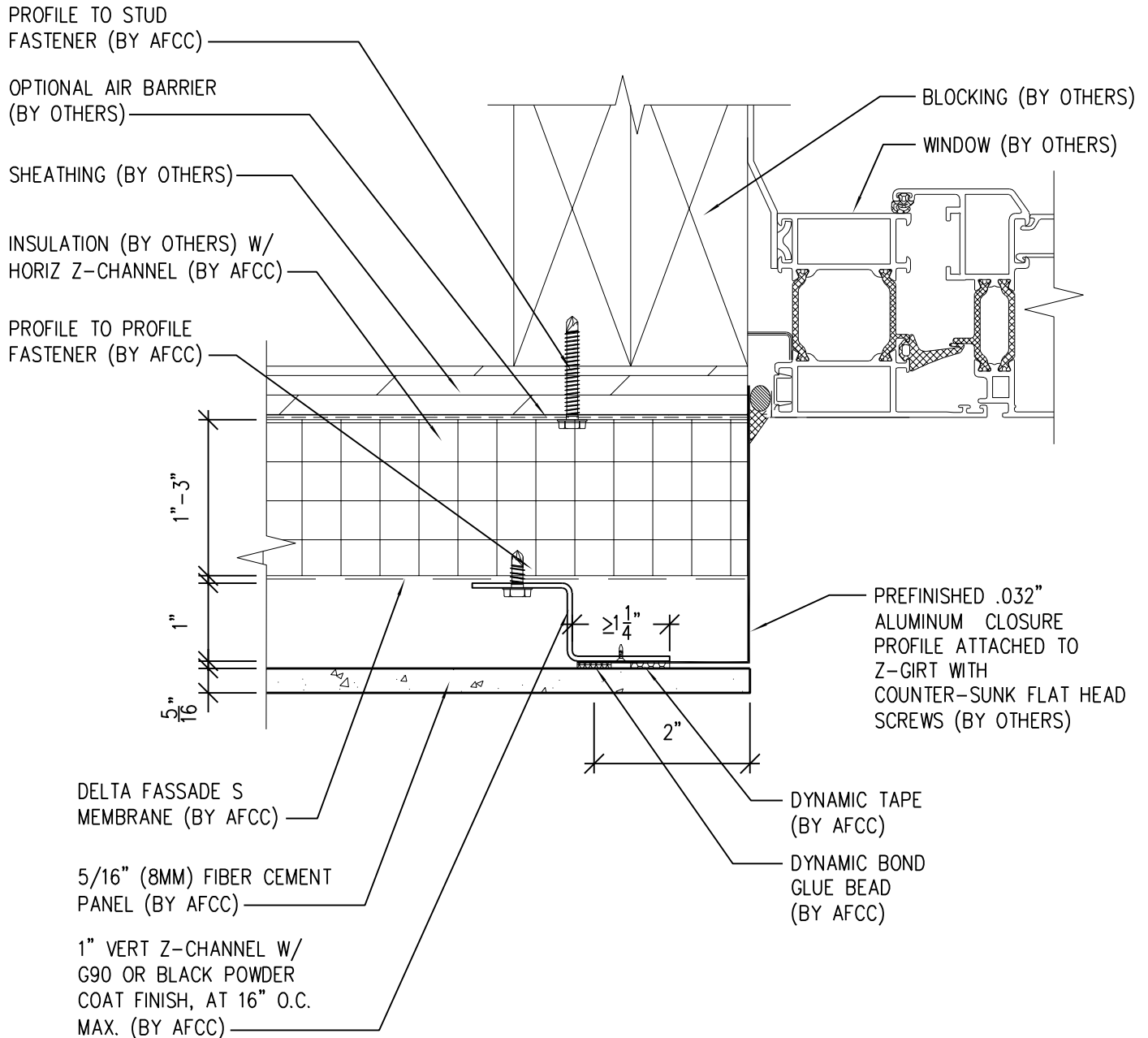
Ref.:

Top of Panel @
Window Sill

Date: 11/26/2021

Two-Layer Steel Attachment System

with Dynamic Bond Adhesive Fastening



SCALE: 6" = 1'-0"

NOTES:

1. PANEL VERTICAL AND HORIZONTAL JOINT SPACING SHOULD BE 3/8" TYPICAL.



**American Fiber
Cement Corporation**

(303) 972-5107

www.americanfibercement.com

6901 S Pierce St #180, Littleton, CO 80128

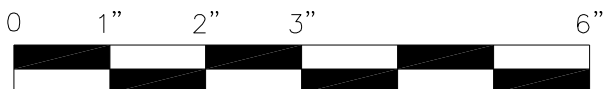
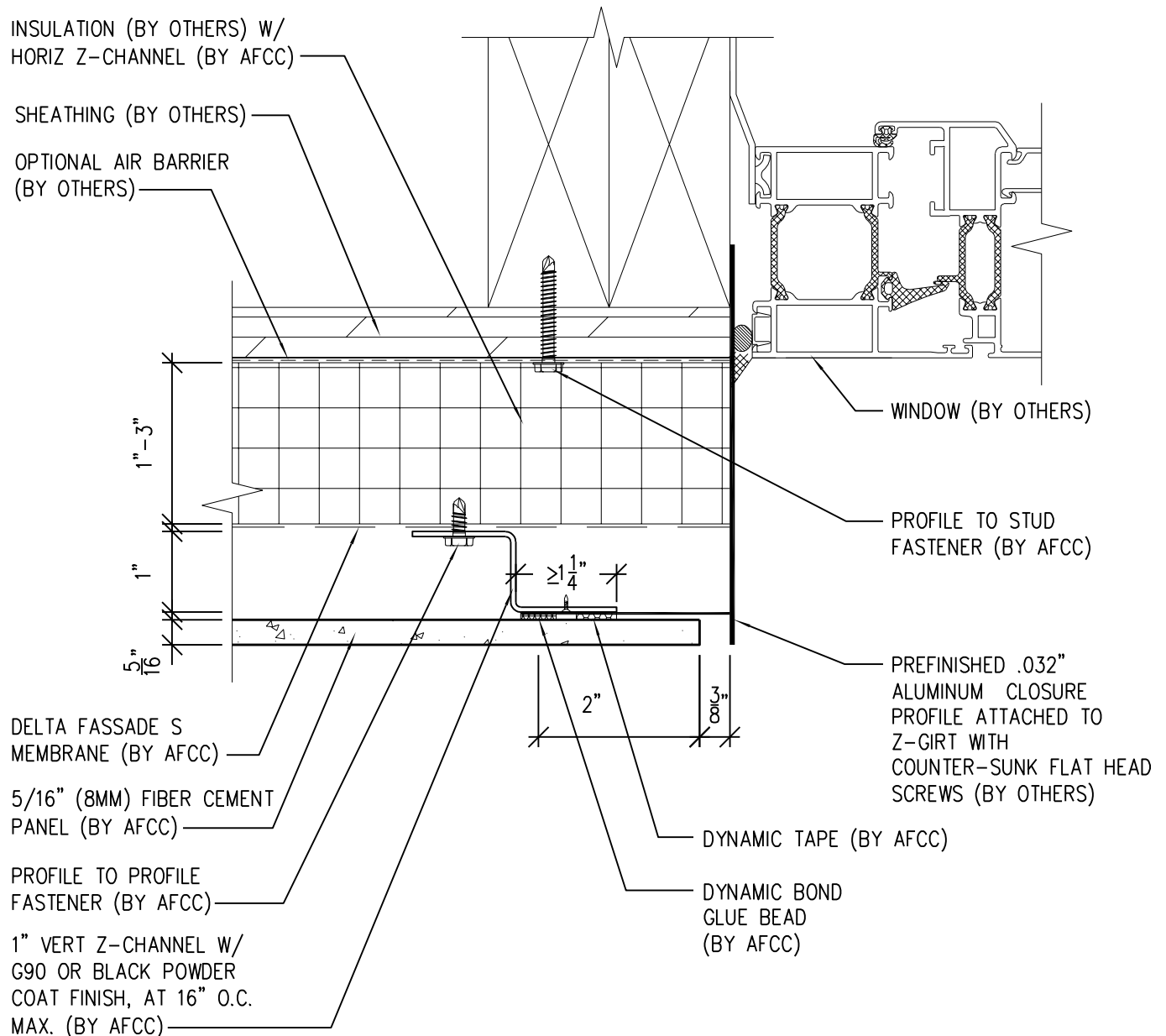
Ref.:

Panel Edge @
Window Jamb

Date: 11/26/2021

Two-Layer Steel Attachment System

with Dynamic Bond Adhesive Fastening



SCALE: 6" = 1' - 0"

NOTES:

1. PANEL VERTICAL AND HORIZONTAL JOINT SPACING SHOULD BE 3/8" TYPICAL.



**American Fiber
Cement Corporation**

(303) 972-5107

www.americanfibercement.com

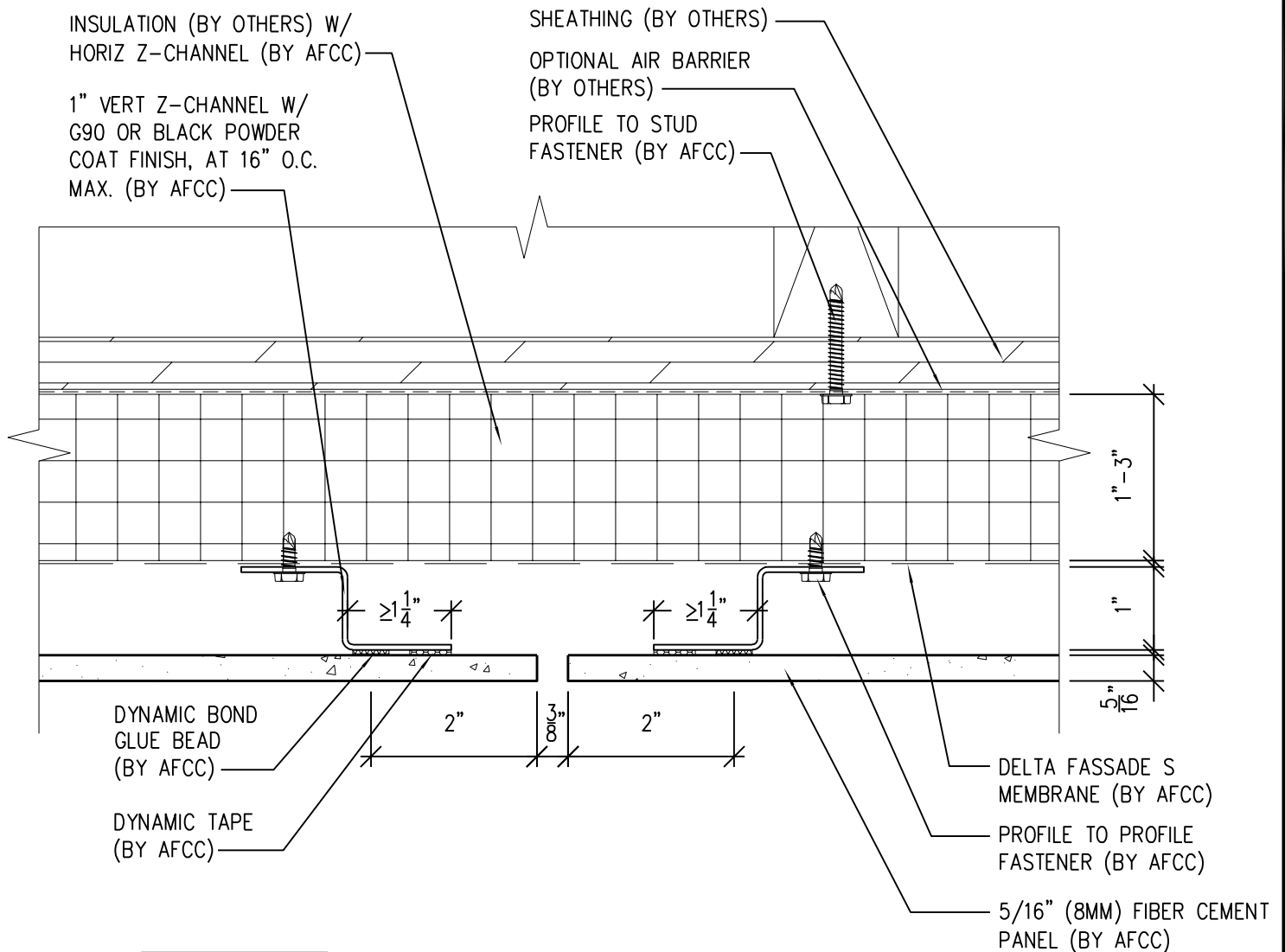
6901 S Pierce St #180, Littleton, CO 80128

Ref.:

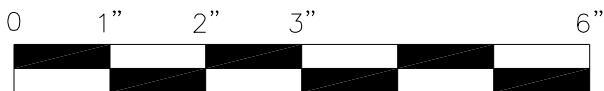
Panel Edge @
Window Jamb (Alternate)

Date: 11/26/2021

Two-Layer Steel Attachment System with Dynamic Bond Adhesive Fastening



NOTE:
THIS DETAIL IS
RECOMMENDED AT
VERTICAL PANEL
JOINTS.



SCALE: 6"=1'-0"

NOTES:

1. PANEL VERTICAL AND HORIZONTAL JOINT SPACING SHOULD BE 3/8" TYPICAL.



**American Fiber
Cement Corporation**

(303) 972-5107

www.americanfibercement.com

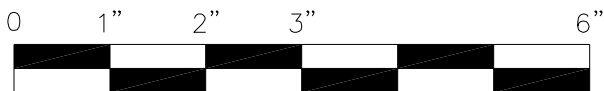
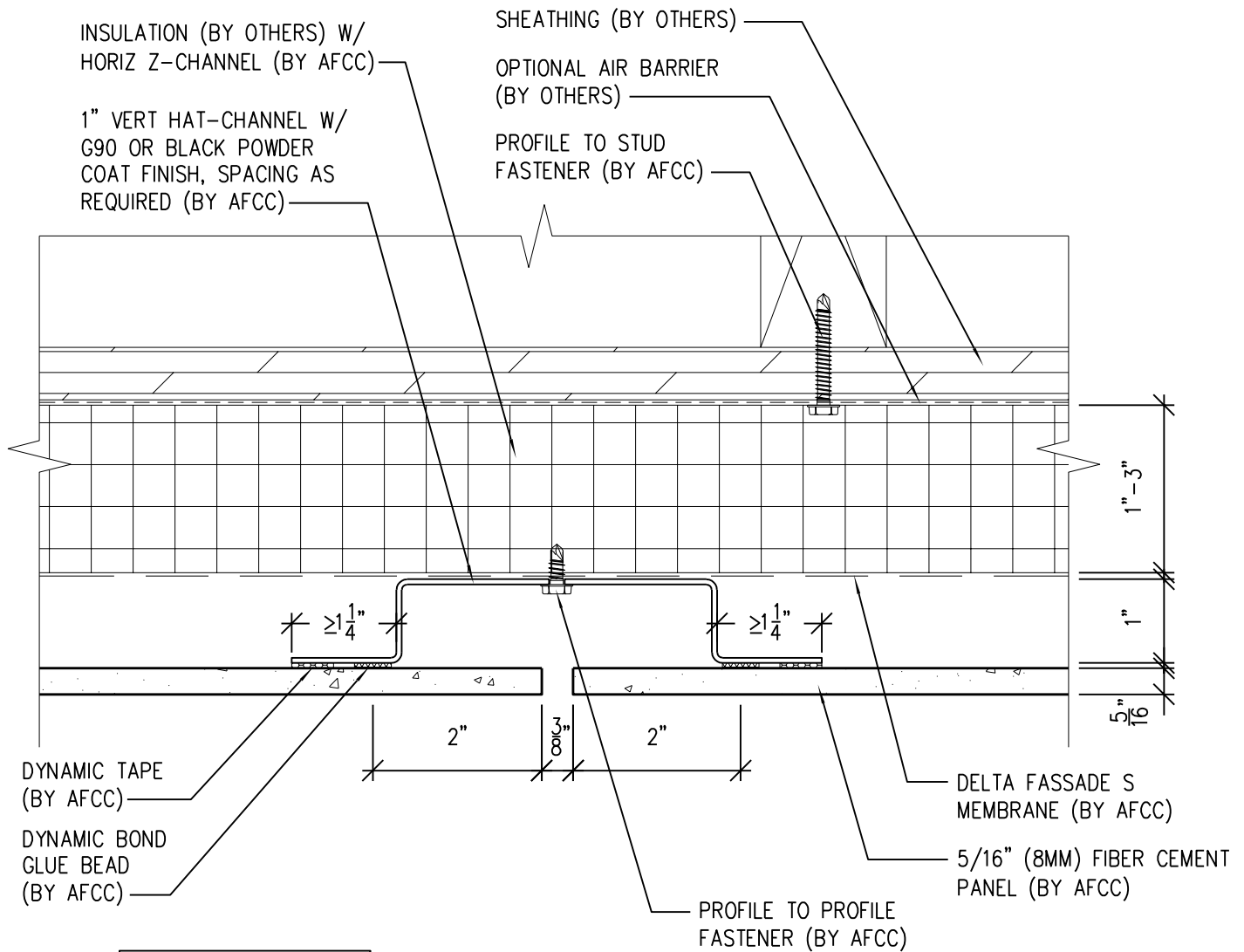
6901 S Pierce St #180, Littleton, CO 80128

Ref.:

**Vertical Panel Joint
Option 1**

Date: 11/26/2021

Two-Layer Steel Attachment System with Dynamic Bond Adhesive Fastening



SCALE: 6"=1'-0"

NOTES:

1. PANEL VERTICAL AND HORIZONTAL JOINT SPACING SHOULD BE 3/8" TYPICAL.



**American Fiber
Cement Corporation**

(303) 972-5107

www.americanfibercement.com

6901 S Pierce St #180, Littleton, CO 80128

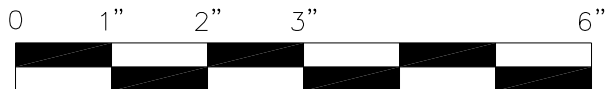
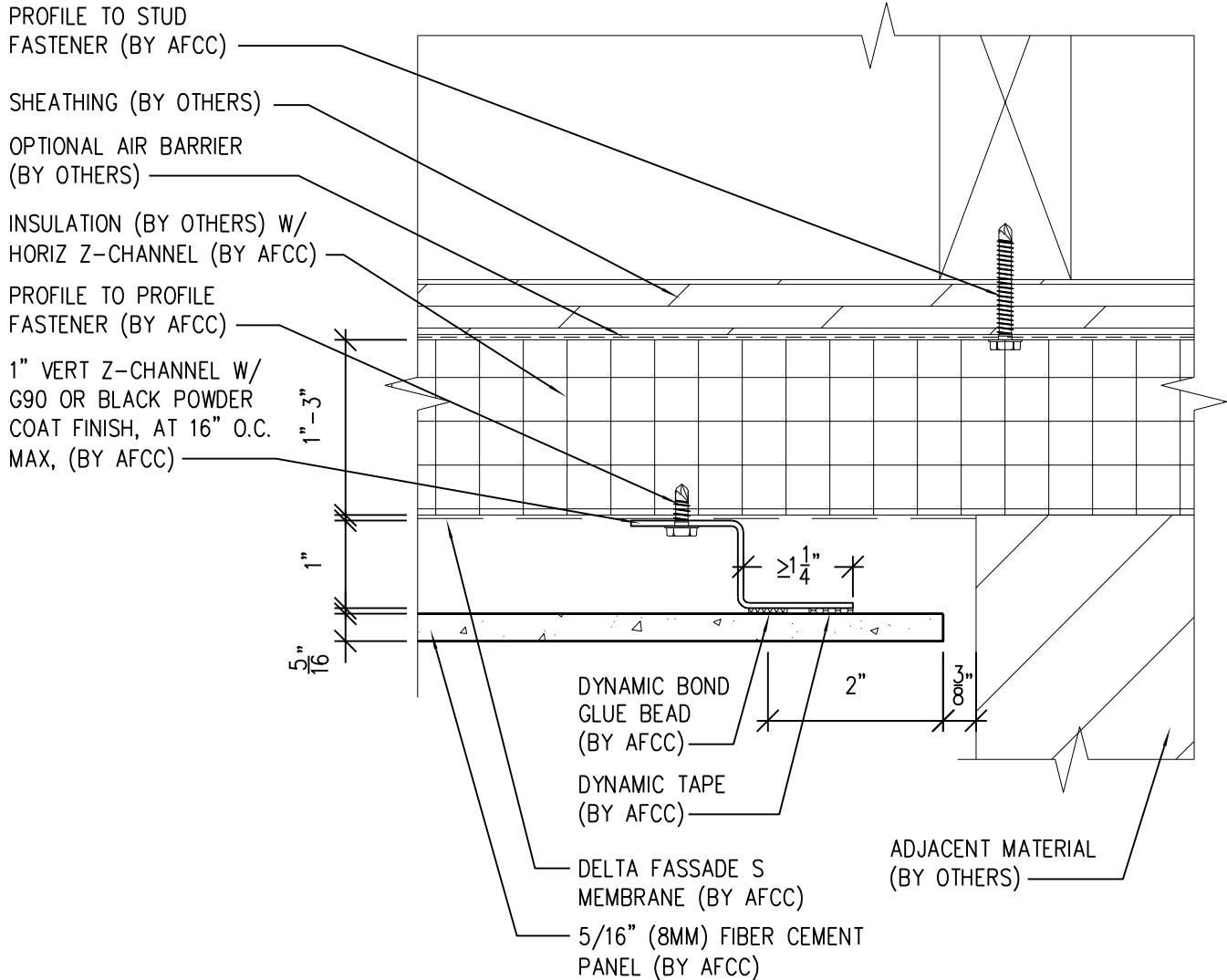
Ref.:

**Vertical Panel Joint
Option 2**

Date: 11/26/2021

Two-Layer Steel Attachment System

with Dynamic Bond Adhesive Fastening



SCALE: 6"=1'-0"

NOTES:

1. PANEL VERTICAL AND HORIZONTAL JOINT SPACING SHOULD BE 3/8" TYPICAL.



**American Fiber
Cement Corporation**

(303) 972-5107

www.americanfibercement.com

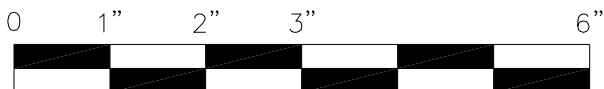
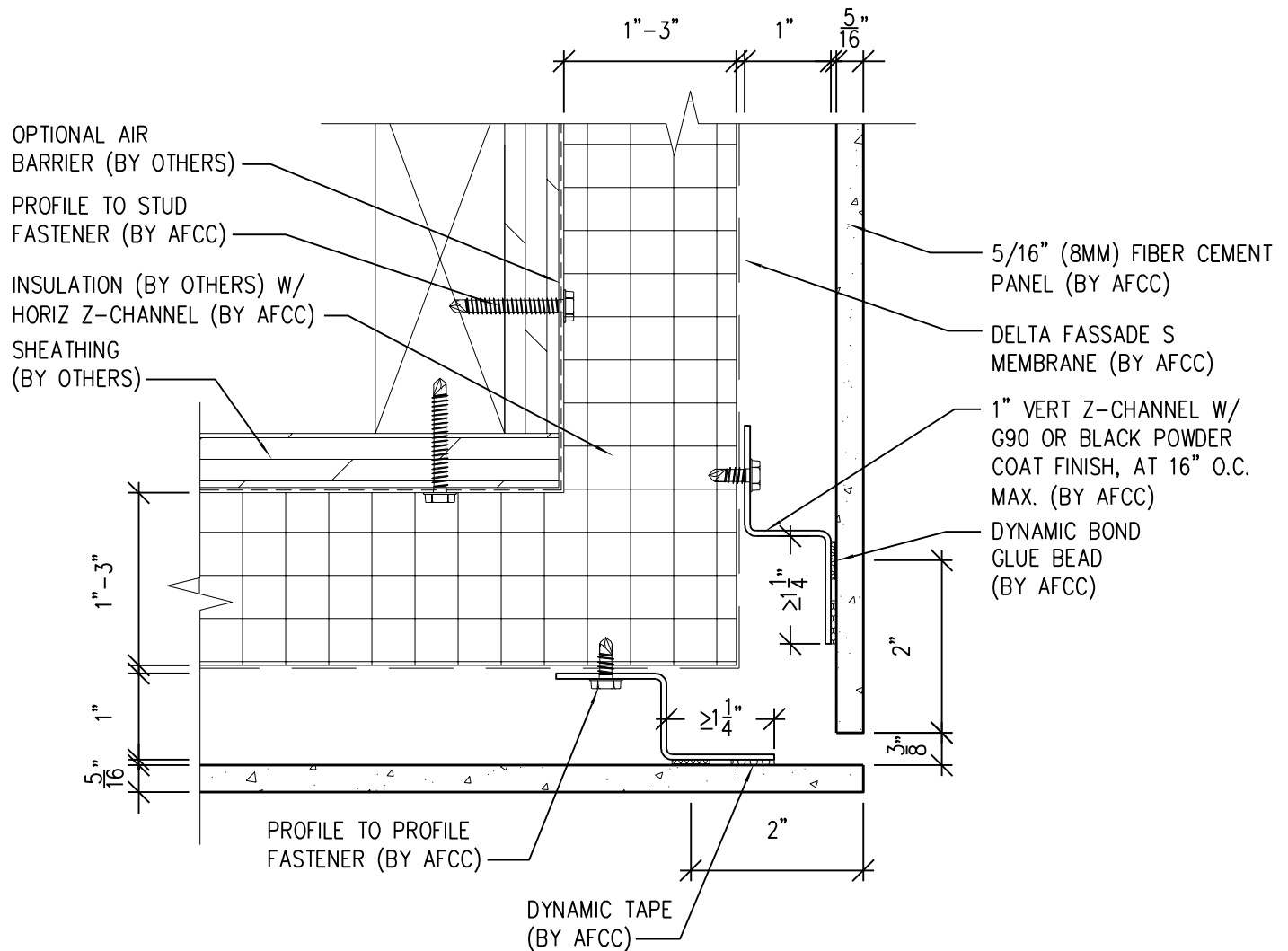
6901 S Pierce St #180, Littleton, CO 80128

Ref.:

Panel Edge @
Butt Joint

Date: 11/26/2021

Two-Layer Steel Attachment System with Dynamic Bond Adhesive Fastening



SCALE: 6"=1'-0"

NOTES:

1. PANEL VERTICAL AND HORIZONTAL JOINT SPACING SHOULD BE 3/8" TYPICAL.



**American Fiber
Cement Corporation**

(303) 972-5107

www.americanfibercement.com

6901 S Pierce St #180, Littleton, CO 80128

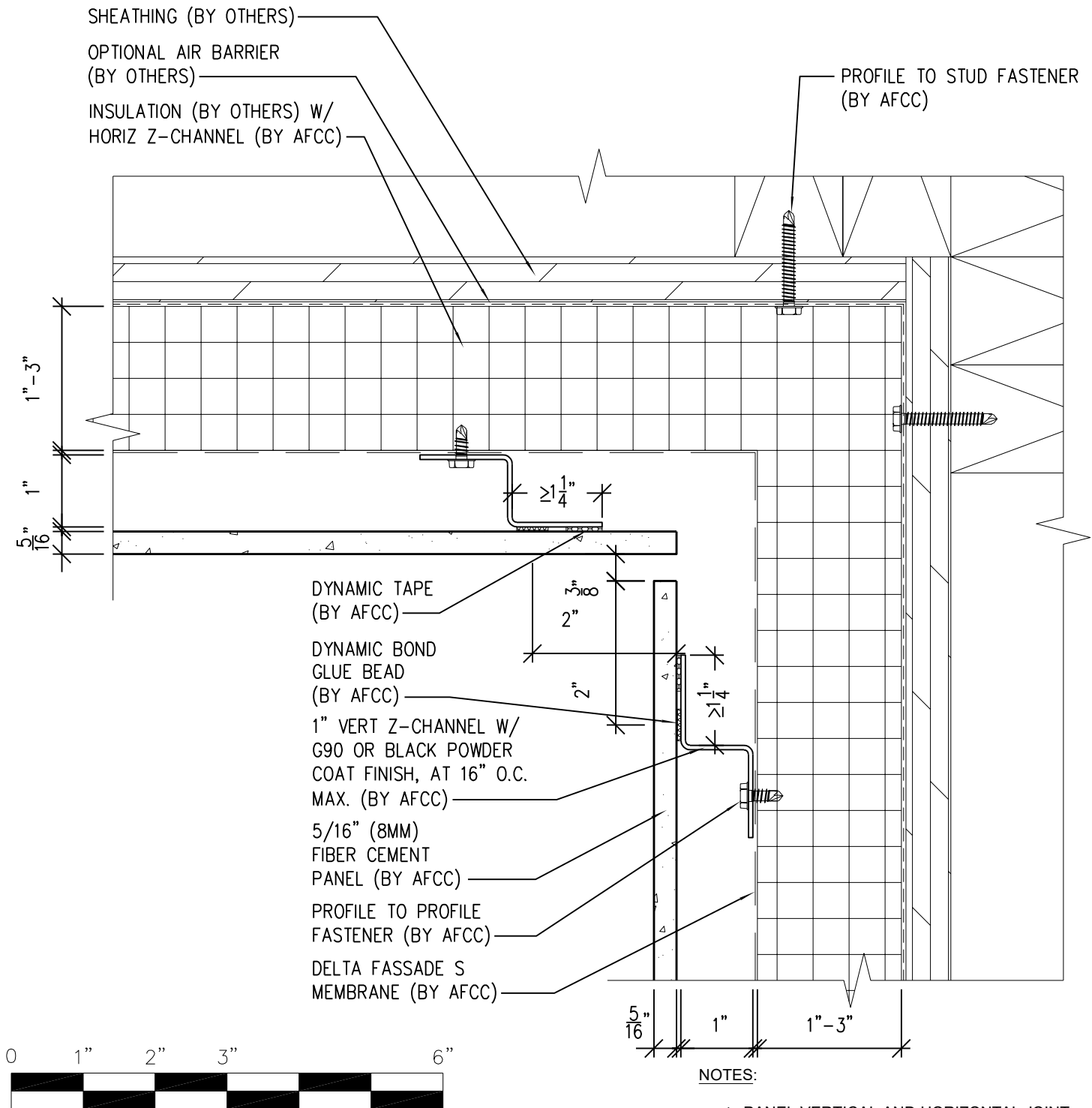
Ref.:

Panels @ Outside Corner

Date: 11/26/2021

Two-Layer Steel Attachment System

with Dynamic Bond Adhesive Fastening



**American Fiber
Cement Corporation**

(303) 972-5107

www.americanfibercement.com

6901 S Pierce St #180, Littleton, CO 80128

Ref.:

**Panels @
Inside Corner**

Date: 11/26/2021