



PRODUCT CATALOG
AFC TERRASLAT BY TONALITY®



Sustainable Processes



Micro-Processing

We start by grinding clay and fireclay into an ultra-fine grain (approximately 0.064 millimeters). Both raw materials are then placed in the press.



High-Pressure Compression

We compress the terracotta element at high pressure using a vacuum extrusion process, which guarantees a high level of solidity.



Homogenous Drying & Hot Glazing

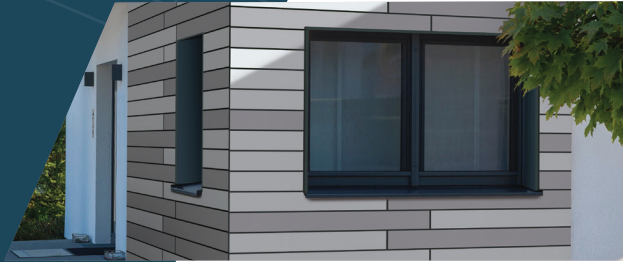
The terracotta elements are then dried and glazed. Multi-story roller dryers ensure homogenous drying. The traditional, digitally controlled hot-glazing process gives the final product the desired surface.



Sintering

The terracotta elements are fired at temperatures up to 1,200°C to the point of sintering. The material is compacted even further as the raw materials are fused together.

BUILDING A --- SUSTAINABLE FUTURE



Lasting Durability

AFC TerraSlat by Tonality® is made to stand the test of time. The terracotta slats are UV and frost-resistant, impact and scratch-proof, and colorfast. The facades require zero maintenance and last over 100 years.



Future-Driven Design

Made from 100% natural materials, the terracotta slats lack harmful additives and benefit both human health and the environment.



Reusable Materials

Facade elements and the supporting structure can be reused in future projects. The slats and mounting hardware can simply be removed and installed elsewhere, reducing CO₂ emissions caused by recycling.

NATURAL BEAUTY

ENDURING STRENGTH

Single-Shell Design

The terracotta slats have a low dead weight, which reduces static stress on the facade and makes it suitable for nearly any wall structure.

Ongoing Safety

Both the substructure and the facade elements are designed to withstand the roughest conditions and provide long-lasting safety.

Invisible Fastening

Slat installation is easy and uses invisible fastening points to create a seamless look.

Cost-Saving Structure

Tonality's patented hook technique facilitates short installation times, lowering overall project costs as a result.

Total Protection

The terracotta slats withstand extreme weather and temperatures — and even resist graffiti — retaining their shape or color in any conditions.

Easy Installation

The terracotta slats and aluminum system rail fit perfectly together for easy installation. The default pre-bent angle can be bent into the desired final position with traditional needle-nose pliers, and integrated pressure springs ensure a tension-free but secure fit. Once installed, the slats are secured by a broad locking pin in the profile.





AFC TerraSlat by Tonality®

Nominal Length

1250 mm
49 1/4 in.

Nominal Width

150 mm (5 7/8 in.)
including 10 mm open joints

Length

1240 mm
48 7/8 in.

Width

140 mm (5 1/2 in.)

Thickness

22 mm (7/8 in.)

Weight

30 +/- 2 kg/m² (6.14
+/- 0.41 lb/ft²)/ft²



ABOUT

AFC TerraSlat by Tonality is a sustainable terracotta facade designed to stand the test of time. Made from 100% natural materials, these eco-friendly slat elements combine lightweight construction with lasting durability while protecting human health and preserving the environment.

BENEFITS

- Maintenance-free
- UV and frost-resistant
- Single-shell design
- Impact and scratch-proof
- Resistant to graffiti
- Easy installation
- Invisible fastening
- Rear-ventilated
- 100-year life expectancy

COLORS

The terracotta slats are available in six modern design colors:



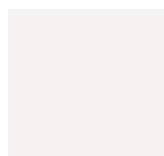
Black Matte
(70025)



Dark Grey
(70005)



Medium Grey
(70014)



White Matte
(70018)



Crème
(70004)



Brick Red
(70019)

SIZE

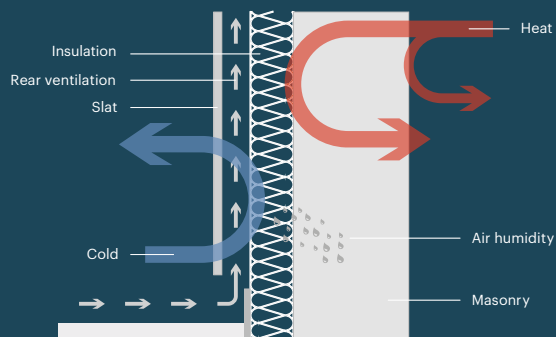
Their slim profile and low weight make these slats perfect for solid and wood frame construction. They stand out for their lifelong weather protection, lack of maintenance, and eco-friendly design.

ADVANTAGES OF THE REAR-VENTILATED TERRACOTTA FACADE

Rear-Ventilated Curtain Facade

The rear-ventilated curtain facade features separate insulation and weather protection functions. The space between the facade cladding and insulation allows air to circulate behind the facade cladding, removing any moisture. The curtain facade provides revolutionary levels of cost-effectiveness, ecology, and durability, making it a superior choice for new construction and renovations.

This sustainable solution also reduces energy costs and meets the requirements for energy-saving facades. When using adequate insulation thicknesses, the rear-ventilated curtain facade can achieve low-energy and passive house standards.





INSTALLATION

MADE SIMPLE

The Substructure at a Glance

The terracotta slats easily hook onto the 2.85m long supplied aluminum rails, making it possible to install 19 rows of slats at a time. This process guarantees a uniform joint pattern. The combination of open joints and invisible fastening creates a particularly classy appearance.

Installing Black Weather-Resistant Membrane

We recommend installing a black weather-resistant membrane underneath the substructure to create a perfect, dark joint pattern.

Aluminum Rail Direction

The terracotta slats may be oriented horizontally or vertically. For a horizontal orientation, the aluminum rails run vertically, and for a vertical orientation, the aluminum rails run horizontally. The cutting marks (grooves) of the aluminum system rail are ideal for alignment using a laser or string.

Mounting the Terracotta Slats

Slats should be mounted in the pre-installed profiles. Cross, half, or one-third bond is possible. To determine the material requirement, we recommend preparing a simple implementation plan in which the surface is outlined and the building openings (windows, doors, etc.) are marked and dimensioned. The desired bond is then applied to the surface. This approach makes it possible to determine the various profile types and terracotta slats precisely. See more information about the profile types in the installation guide.

Securing To Avoid Lateral Displacement

The slats are secured using a broad locking pin in the profile. The default pre-bent angle can be easily bent into the desired final position using a standard set of needle-nose pliers.



PROCESSING INSTRUCTIONS

The terracotta slats are suitable for small and large facade surfaces in various areas of construction. This includes wood frame construction, as terracotta and wood are a logical combination for ecology and sustainability. Carpenters are inherently familiar with slat formats, so most can fasten the facade system to a wooden supporting structure without additional effort. This convenience makes it possible to construct design-oriented wooden house facades that maintain their appearance while remaining maintenance-free throughout their service life.

NOTE:

For cutting the terracotta slats, we recommend using a customary wet cutter (cutter for stoneware with 3-5% water absorption).







AMERICAN
FIBER CEMENT

SERVING THE U.S. AND CANADA

Phone: 303.972.5107

6901 South Pierce Street, Suite 180
Littleton, CO 80128 USA

americanfibercement.com