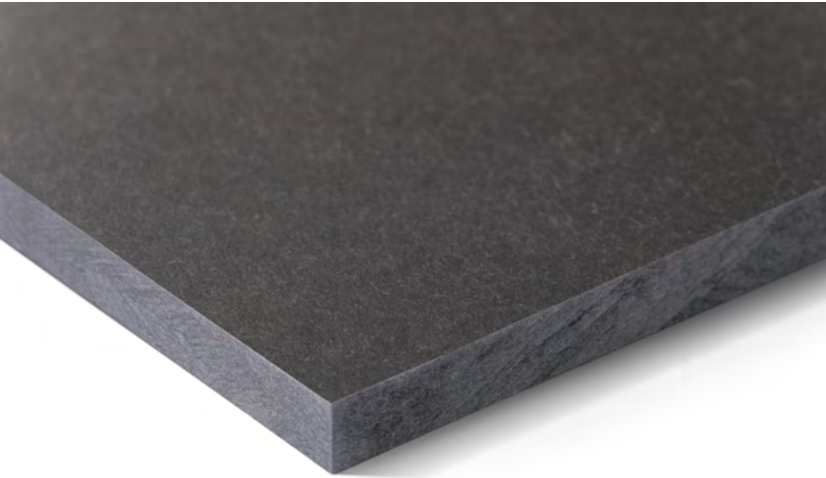


CARAT

Unique natural look and timeless beauty.
The translucent, slightly pigmented surface
adds to its expressive appearance.

CARAT



The naturally dried color line Carat creates clear expressiveness through a translucent, lightly pigmented surface. The throughout-coloring of the fiber cement panels creates monolithic and elegant-looking building envelopes.

The twenty shades of the Carat color line range from light to dark and from cool to warm shades, thus offering a particularly varied color spectrum. Carat is independent and simple and, at the same time, offers numerous color combinations.

Optionally, Carat is also available with a special HR coating that offers greater scratch resistance and protection against heavy soiling and graffiti.



House RnEve, Mönchhof, Austria. Architect: ad2 Architekten, Weiden am See, Austria. Photographer: Meraner & Hauser OHG/SNC, Bolzano, Italy.

Technical Data

Panels
The panel is colored through.
Coating: Translucent lightly pigmented

Panel format
Swisspearl Largo:
Maximum usable format 3,050 x 1,250 mm,
panel thickness 8.0 mm and 12 mm

For a detailed summary of the sizing
and color options, please refer to our
delivery program.

Mounting
Visible on wooden substructure:
Bolts with painted head

Visible on metal substructure:
Blind rivets with painted head

Invisible on metal substructure:
Undercut anchors

Technical Data
Detailed information can be found in
the DIM – “Design and Installation
Manual Largo.”

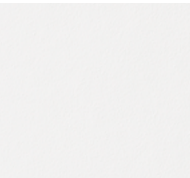
		
Crystal 8010	Granite 8060	Granite 8061
		
Granite 8062	Jade 8053	Azurite 8040
		
Anthracite 8021	Anthracite 8020	Anthracite 8023
		
Anthracite 8024		

Colors

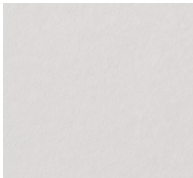
Twenty standard colors.

Special Coating Carat HR (optional)

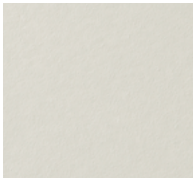
Carat HR (high-resistance) is a special transparent coating that has a high scratch resistance and offers protection against heavy soiling and graffiti. Carat HR is available in all Carat standard colors.



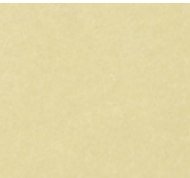
Ivory 8099



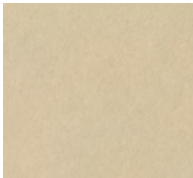
Ivory 8091



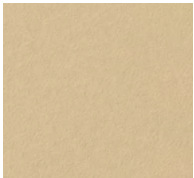
Ivory 8090



Limestone 8083



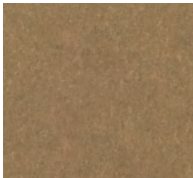
Sandstone 8000



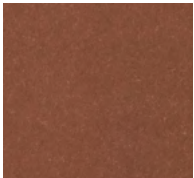
Sandstone 8002



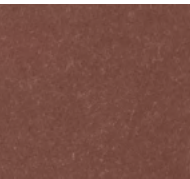
Amber 8075



Amber 8074



Coral 8034



Coral 8033



OMRRK National Museum, Budapest, Hungary. Architect: Narmer Építészeti Stúdió, Budapest, Hungary. Photographer: Meraner & Hauser OHG/SNC, Bolzano, Italy.



The OMRRK National Museum in Budapest was planned in an arrangement of four wings on the top two floors, running perpendicular to the main axis of the building. This strategy reduces the size of the building and allows for the design of spaces with natural light from two directions. The facades of the museum are clad in custom-colored, large-format Swisspearl panels.