

TerraSlat Detail Set - Single Layer Horizontal Layout



AMERICAN
FIBER CEMENT



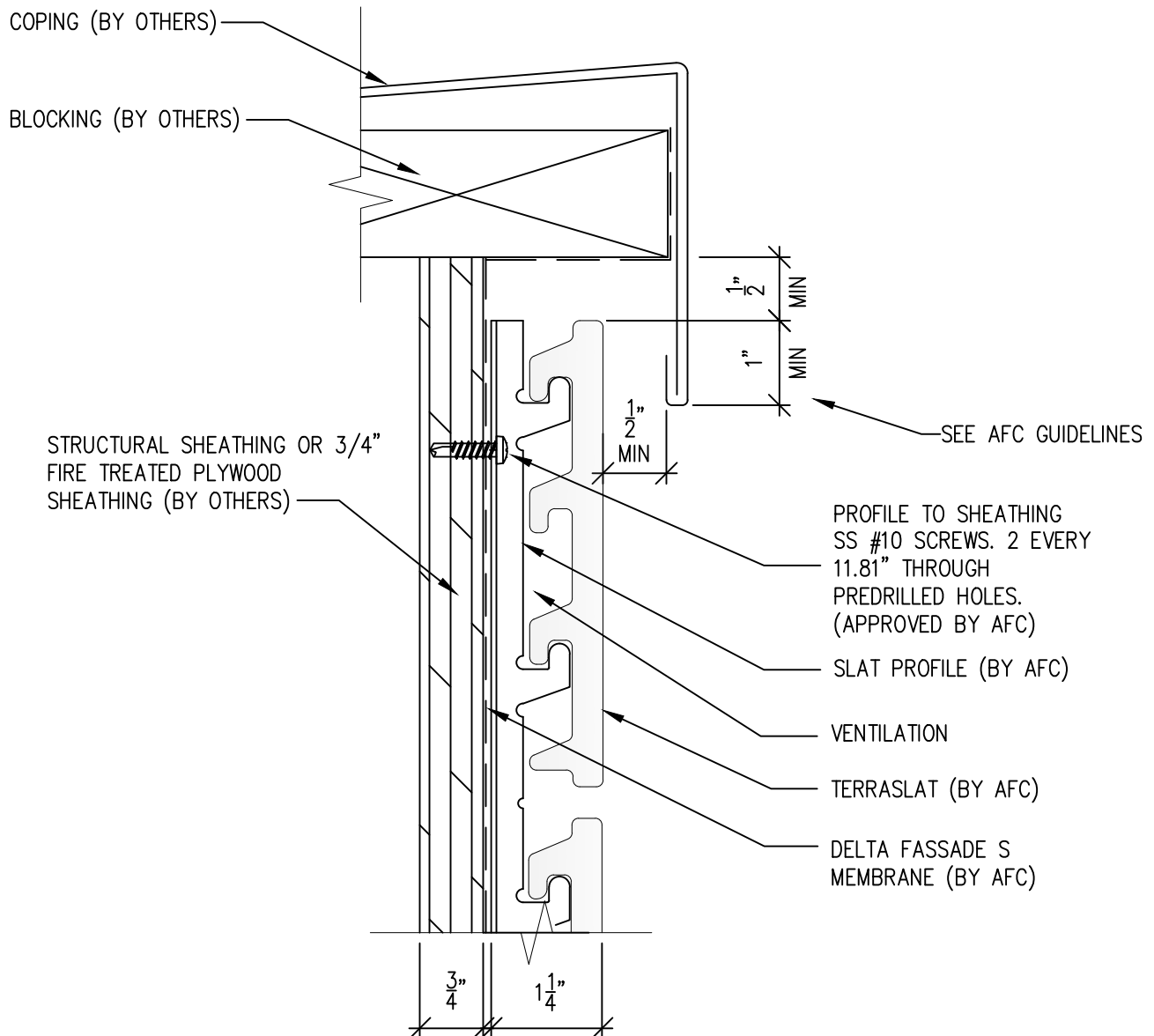
AFC TerraSlat by Tonality®



Typical Details

Page 3:	Top of Slat @ Coping
Page 4:	Top Slat @ Soffit
Page 5:	Top of Slat @ AFC TerraSlat Soffit
Page 6:	Horizontal Joint @ Continuous Substrate
Page 7:	Horizontal Joint @ Break In Substrate
Page 8:	Bottom of Slat @ Wall Base
Page 9:	Bottom of Slat @ Open Termination
Page 10:	Bottom of Slat @ Low Roof Flashing
Page 11:	Bottom of Slat @ Soffit
Page 12:	Bottom of Slat @ Soffit (Alternate)
Page 13:	Bottom of Slat @ Soffit
Page 14:	Bottom of Slat @ F.C.P Soffit
Page 15:	Bottom of Slat @F.C.P. Soffit (Alternate)
Page 16:	Soffit Termination @ Adjacent Material
Page 17:	Bottom of Slat @ Window Head
Page 18:	Bottom of Slat @ Window Head (Alternate)
Page 19:	Top of Slat @ Window Sill
Page 20:	Slat Edge @ Window Jamb
Page 21:	Vertical Slat Joint
Page 22:	Slat Edge @ Window Jamb (Alternate)
Page 23:	Slat Edge @ Butt Joint
Page 24:	Slats @ Outside Corner
Page 25:	Slat @ Outside Corner
Page 26:	Slat @ Inside Corner

TerraSlat Detail Set-Single Layer Horizontal Layout



SCALE: 6"=1'-0"

NOTES:

1. PANEL VERTICAL AND HORIZONTAL JOINT SPACING SHOULD BE 3/8" TYPICAL.

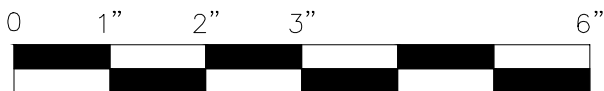
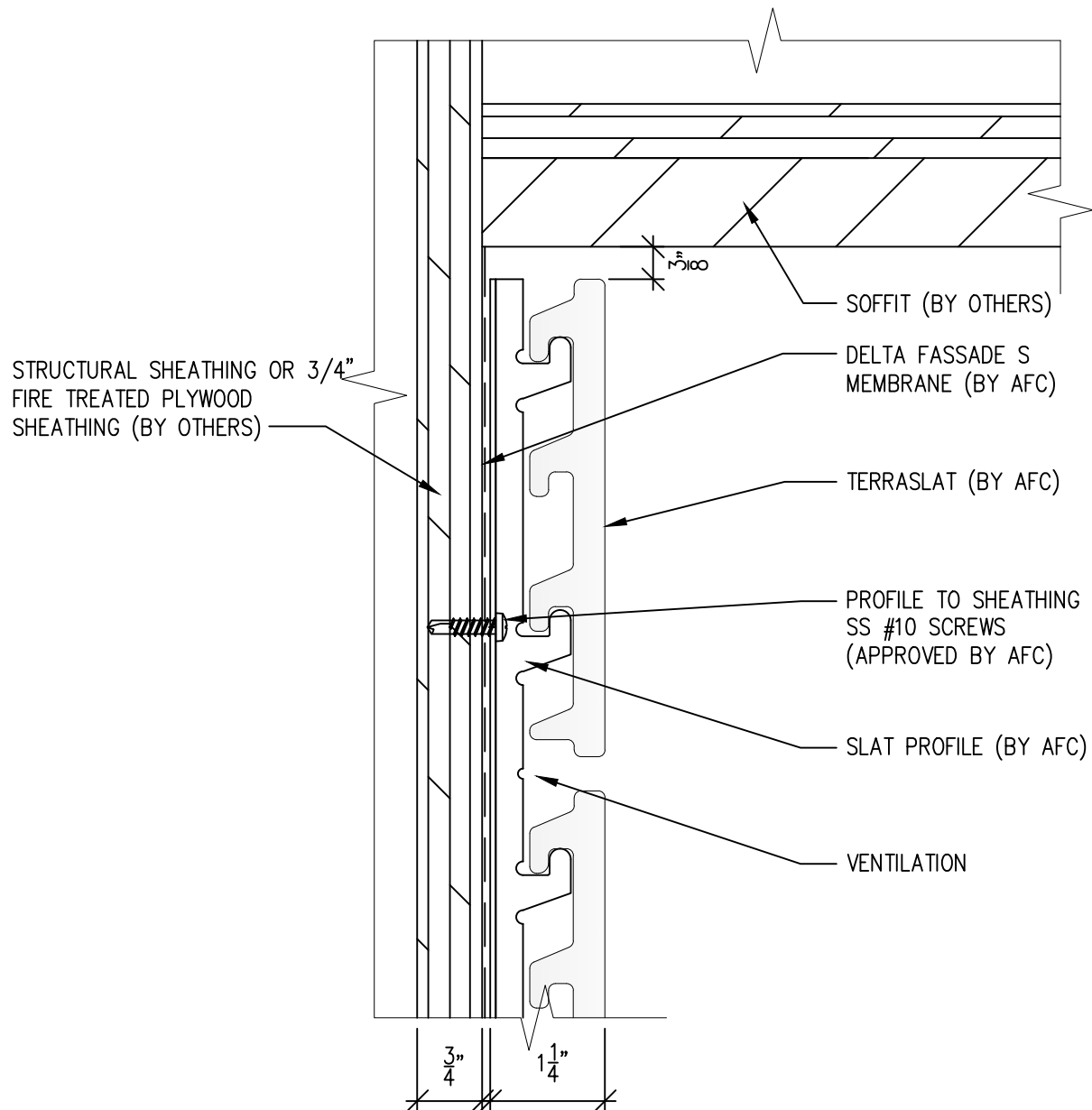


(303) 972-5107
6901 S Pierce St #180
Littleton, CO 80128
www.americanfibercement.com

Ref.:
Top of Slat @ Coping

Date: 04/2024

TerraSlat Detail Set-Single Layer Horizontal Layout



SCALE: 6"=1'-0"

NOTES:

1. PANEL VERTICAL AND HORIZONTAL JOINT SPACING SHOULD BE 3/8" TYPICAL.

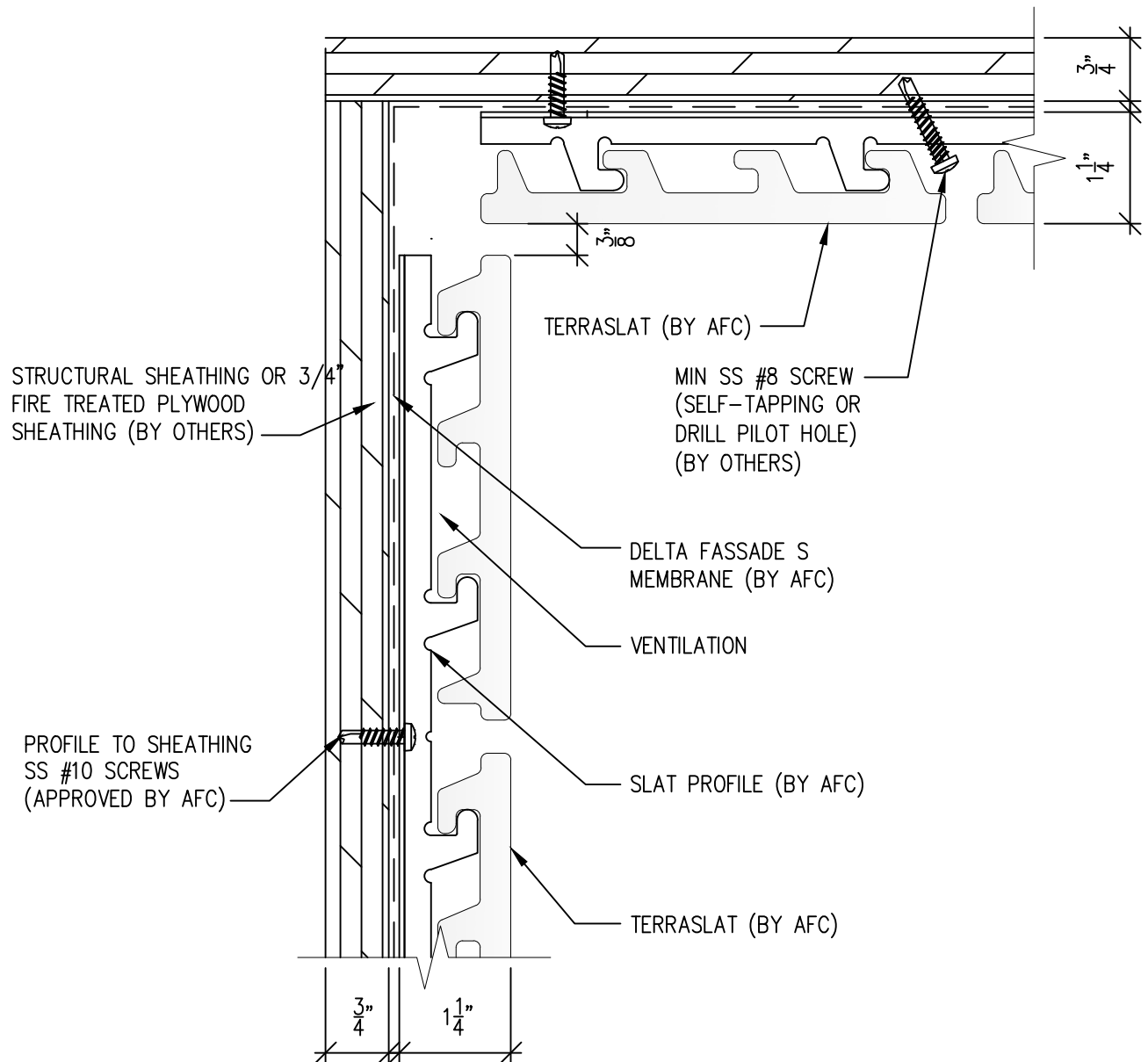


(303) 972-5107
6901 S Pierce St #180
Littleton, CO 80128
www.americanfibercement.com

Ref.:
Top of Slat @
Soffit

Date: 04/2024

TerraSlat Detail Set-Single Layer Horizontal Layout



SCALE: 6"=1'-0"

NOTES:

1. PANEL VERTICAL AND HORIZONTAL JOINT SPACING SHOULD BE 3/8" TYPICAL.



(303) 972-5107
6901 S Pierce St #180
Littleton, CO 80128

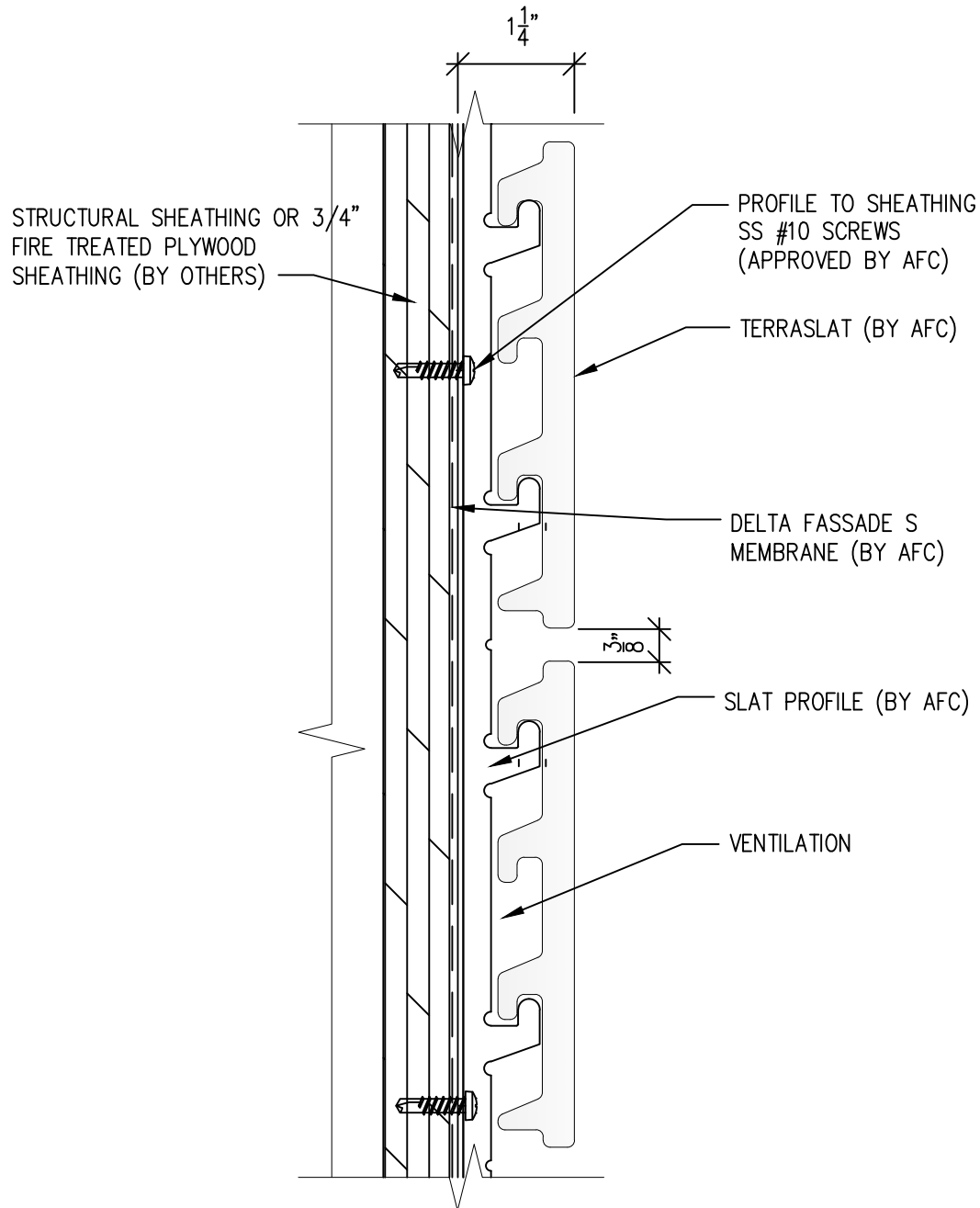
www.americanfibercement.com

Ref.:

Top of Slat @
AFC TerraSlat Soffit

Date: 04/2024

TerraSlat Detail Set-Single Layer Horizontal Layout



SCALE: 6"=1'-0"

NOTES:

1. PANEL VERTICAL AND HORIZONTAL JOINT SPACING SHOULD BE 3/8" TYPICAL.

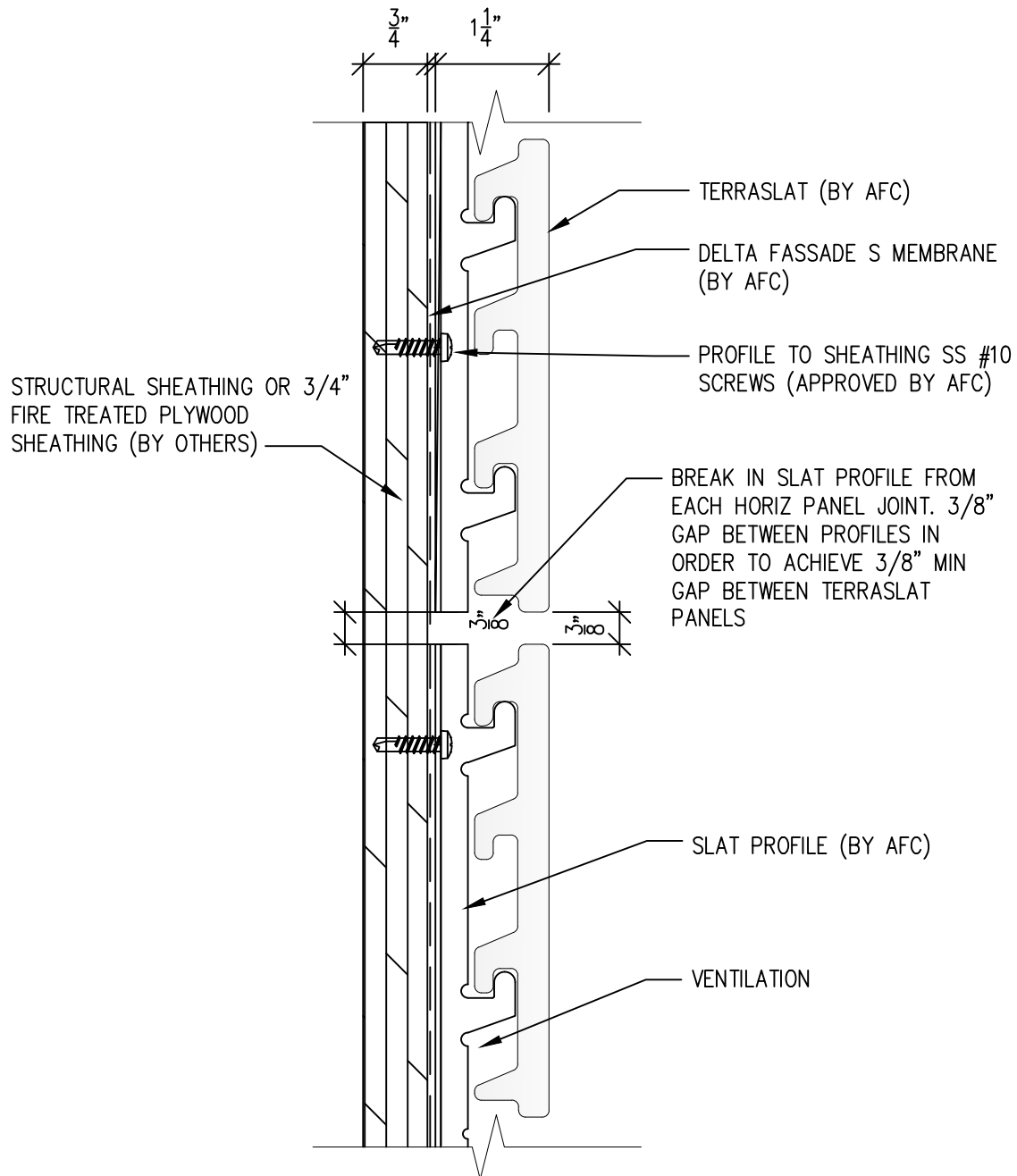


(303) 972-5107
6901 S Pierce St #180
Littleton, CO 80128
www.americanfibercement.com

Ref.: Horizontal Joint @
Continuous Substrate

Date: 04/2024

TerraSlat Detail Set-Single Layer Horizontal Layout



SCALE: 6"=1'-0"

NOTES:

1. PANEL VERTICAL AND HORIZONTAL JOINT SPACING SHOULD BE 3/8" TYPICAL.

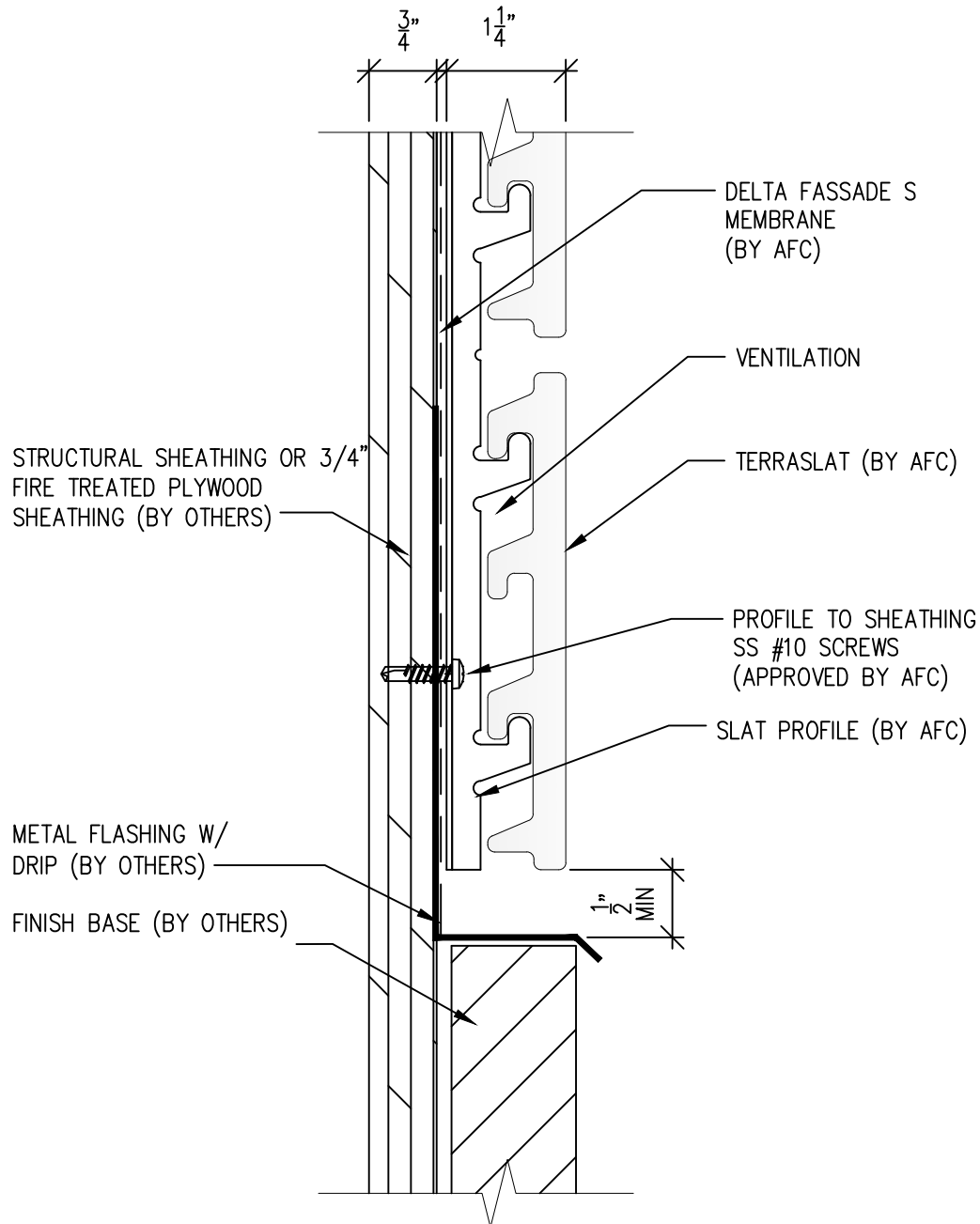


(303) 972-5107
6901 S Pierce St #180
Littleton, CO 80128
www.americanfibercement.com

Ref.:
Horizontal Joint @
Break in Substrate

Date: 04/2024

TerraSlat Detail Set-Single Layer Horizontal Layout



SCALE: 6"=1'-0"

NOTES:

1. PANEL VERTICAL AND HORIZONTAL JOINT SPACING SHOULD BE 3/8" TYPICAL.



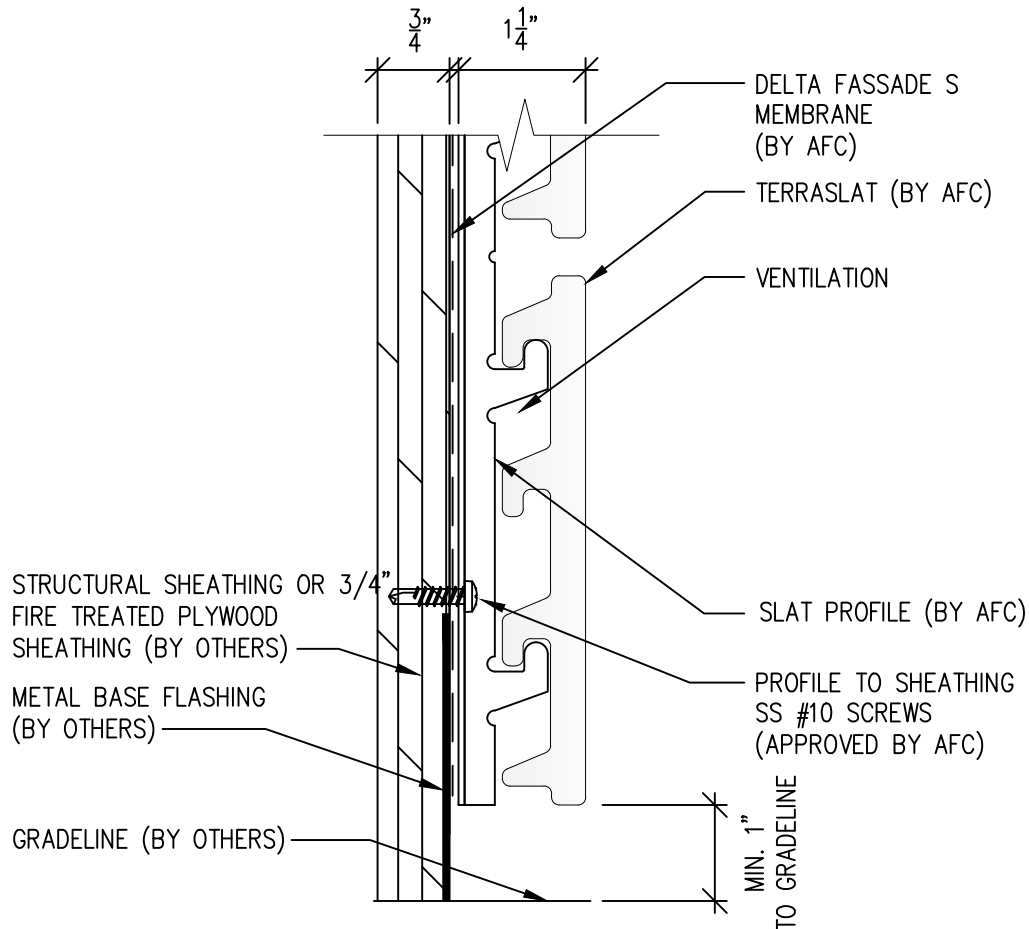
(303) 972-5107
6901 S Pierce St #180
Littleton, CO 80128

www.americanfibercement.com

Ref.:
Bottom of Slat @
Wall Base

Date: 04/2024

TerraSlat Detail Set-Single Layer Horizontal Layout



NOTE:
HOLD BASE OF TERRASLAT
PANEL 6"-12" OFF GRADE
BASED ON EXPECTED SNOW
BUILDUP



SCALE: 6"=1'-0"

NOTES:

1. PANEL VERTICAL AND HORIZONTAL JOINT SPACING SHOULD BE 3/8" TYPICAL.

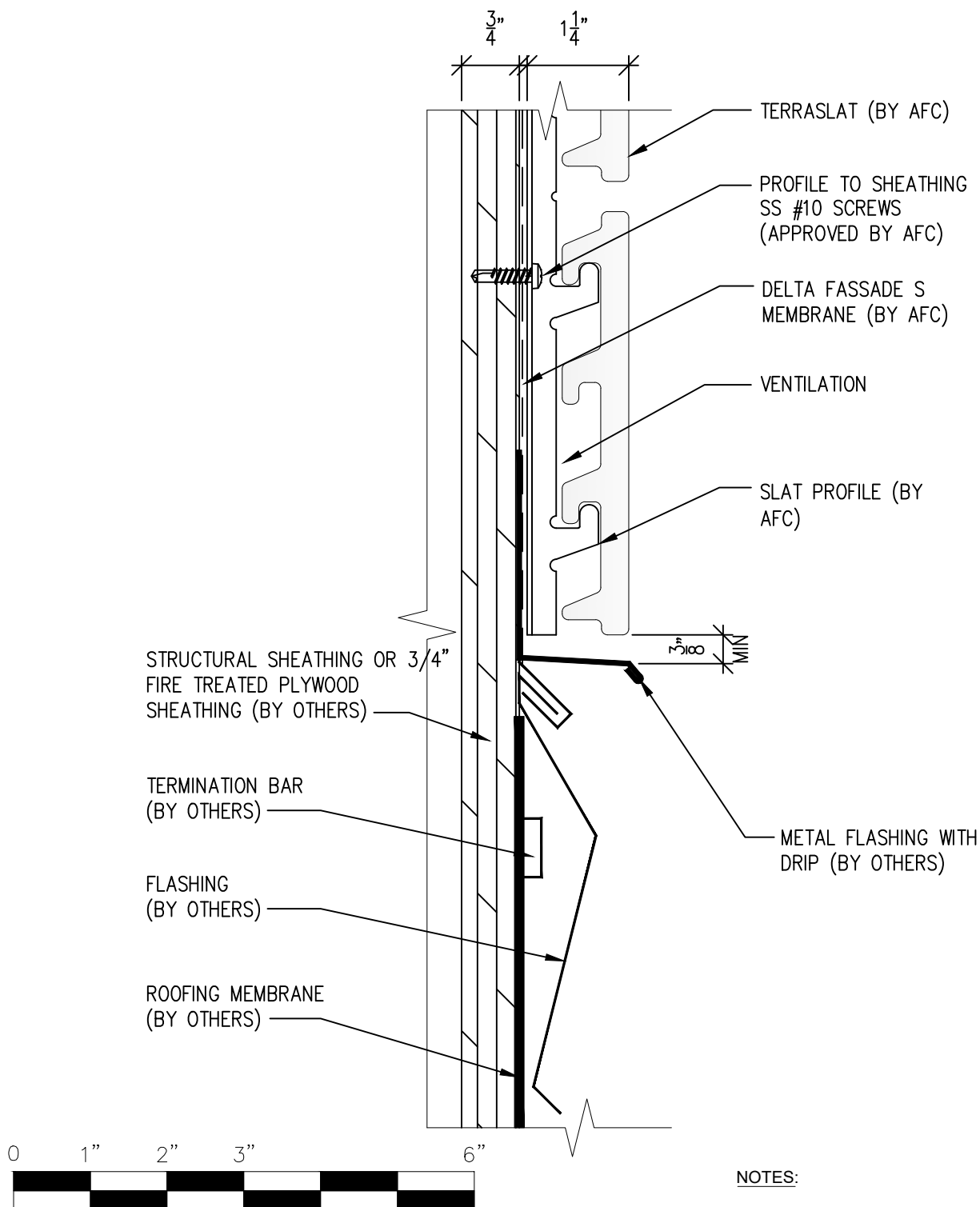


(303) 972-5107
6901 S Pierce St #180
Littleton, CO 80128
www.americanfibercement.com

Ref.:
Bottom of Slat @
Open Termination

Date: 04/2024

TerraSlat Detail Set-Single Layer Horizontal Layout



SCALE: 6"=1'-0"

NOTES:

1. PANEL VERTICAL AND HORIZONTAL JOINT SPACING SHOULD BE 3/8" TYPICAL.

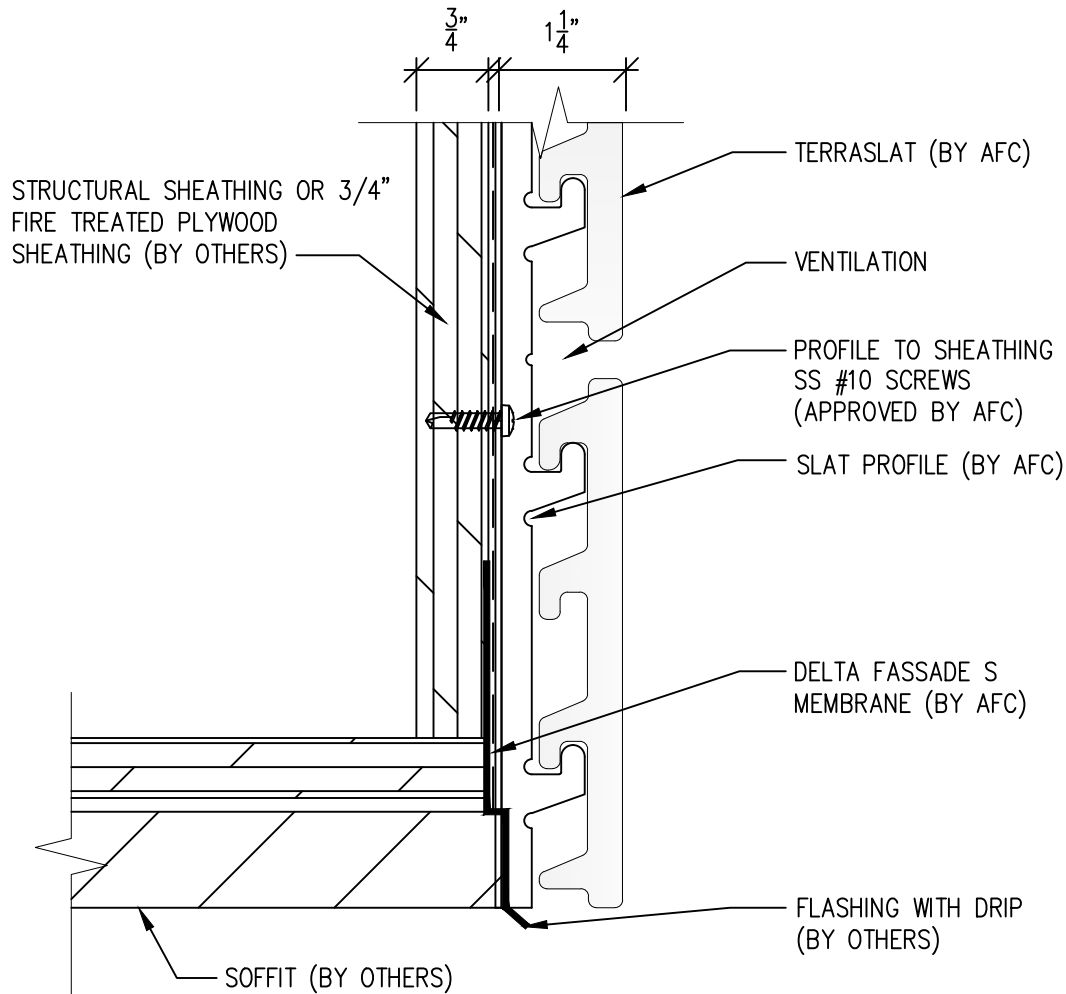


(303) 972-5107
6901 S Pierce St #180
Littleton, CO 80128
www.americanfibercement.com

Ref.:
Bottom of Slat @
Low Roof Flashing

Date: 04/2024

TerraSlat Detail Set-Single Layer Horizontal Layout



SCALE: 6"=1'-0"

NOTES:

1. PANEL VERTICAL AND HORIZONTAL JOINT SPACING SHOULD BE 3/8" TYPICAL.

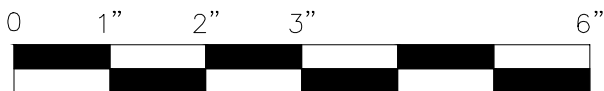
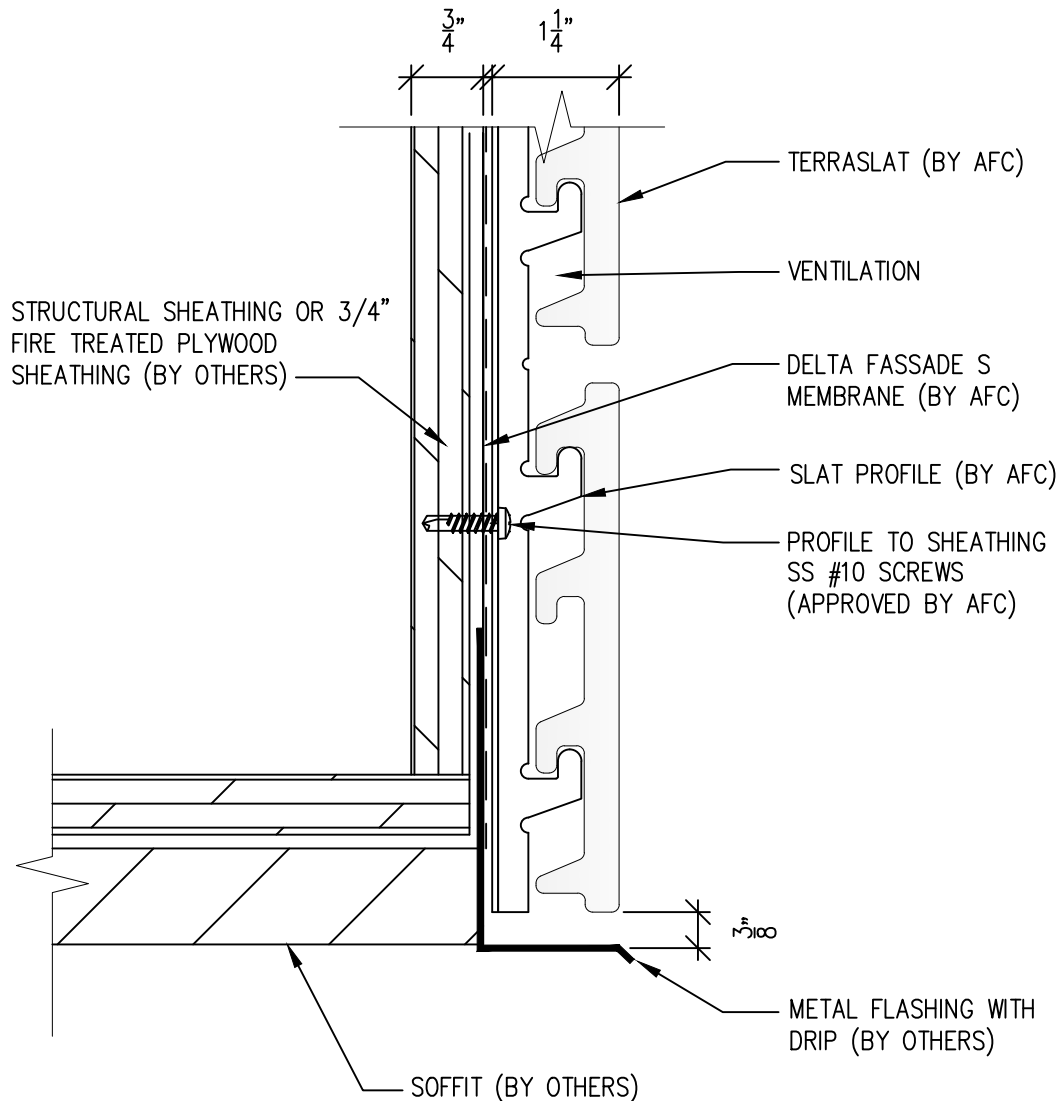


(303) 972-5107
6901 S Pierce St #180
Littleton, CO 80128
www.americanfibercement.com

Ref.:
Bottom of Slat @
Soffit

Date: 04/2024

TerraSlat Detail Set-Single Layer Horizontal Layout



SCALE: 6"=1'-0"

NOTES:

1. PANEL VERTICAL AND HORIZONTAL JOINT SPACING SHOULD BE 3/8" TYPICAL.



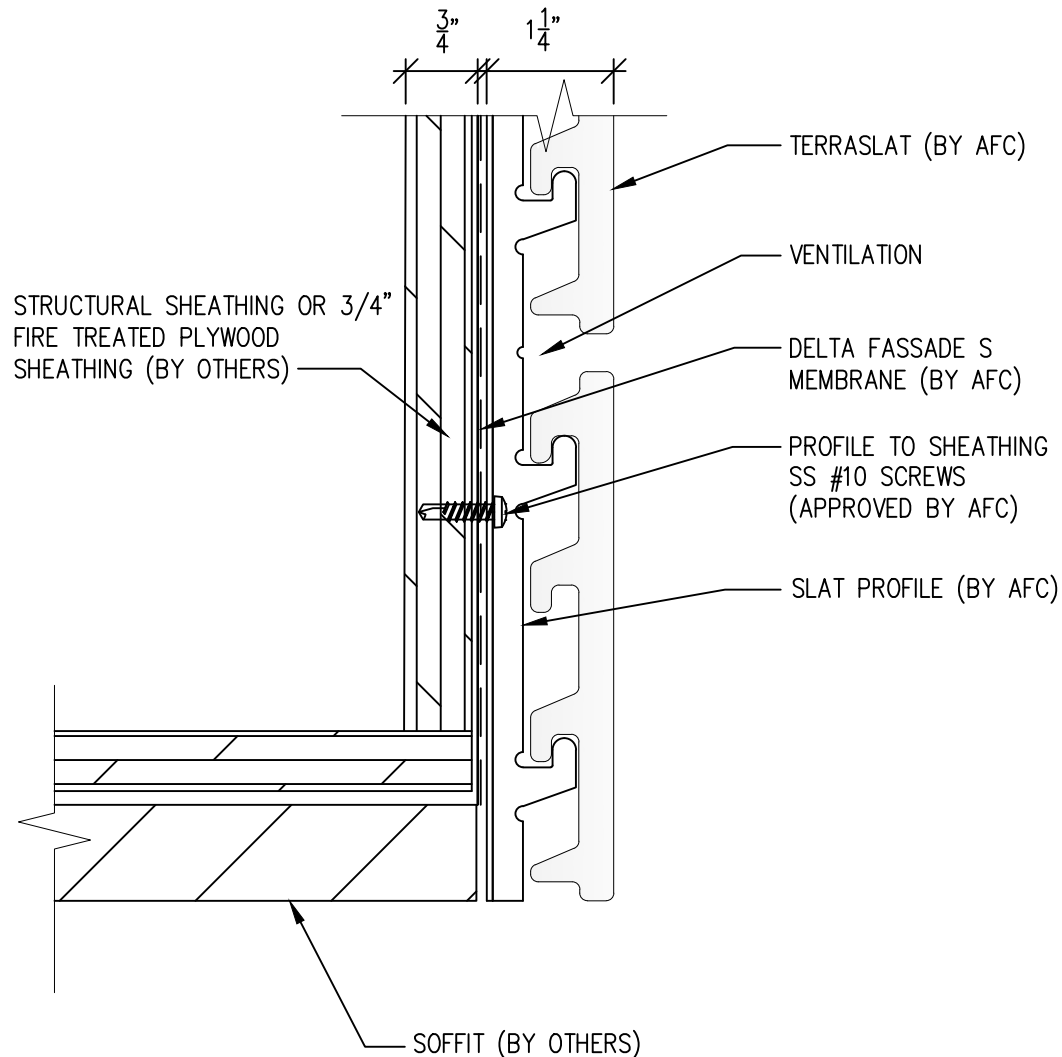
(303) 972-5107
6901 S Pierce St #180
Littleton, CO 80128

www.americanfibercement.com

Ref.:
Bottom of Slat @
Soffit(Alternate)

Date: 04/2024

TerraSlat Detail Set-Single Layer Horizontal Layout



SCALE: 6"=1'-0"

NOTES:

1. PANEL VERTICAL AND HORIZONTAL JOINT SPACING SHOULD BE 3/8" TYPICAL.

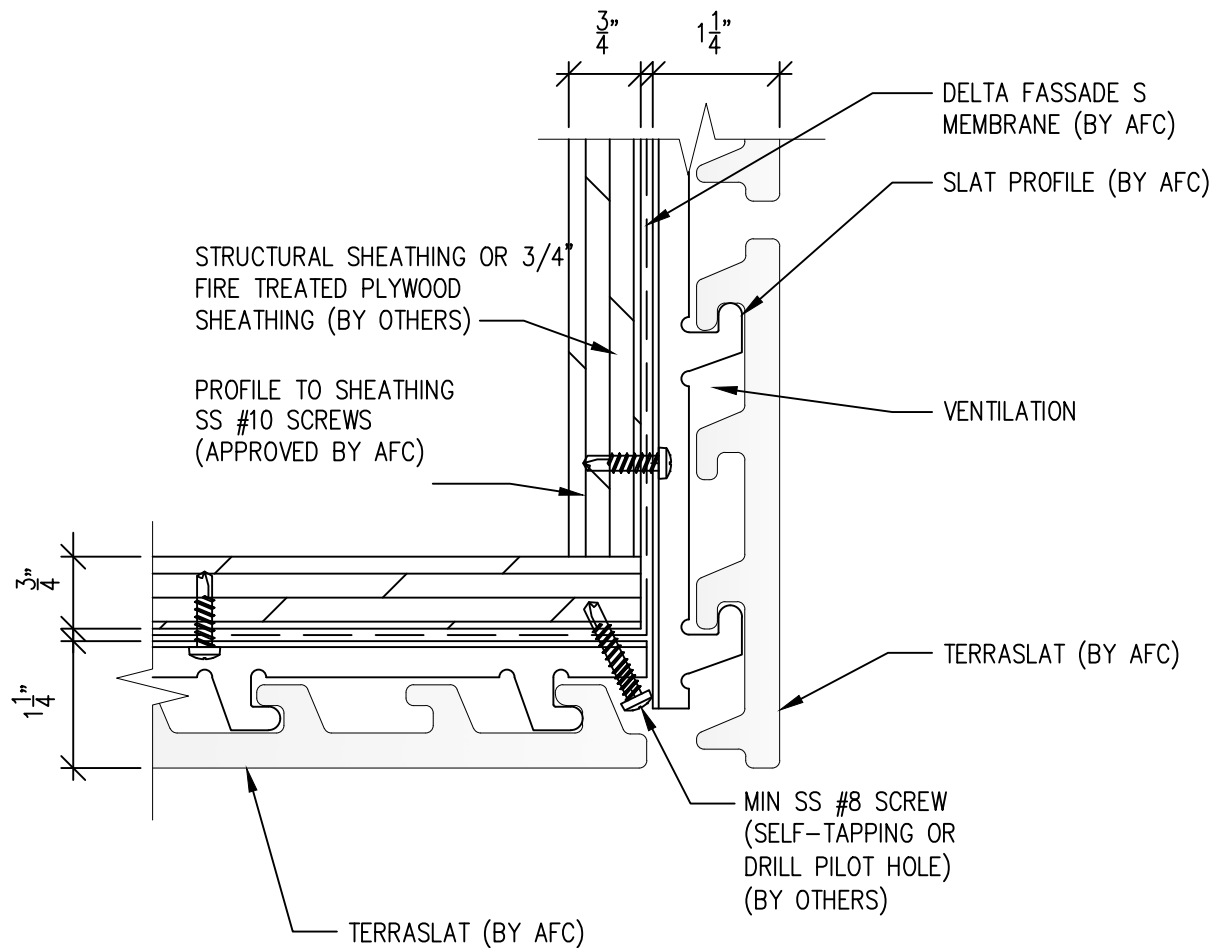


(303) 972-5107
6901 S Pierce St #180
Littleton, CO 80128
www.americanfibercement.com

Ref.:
Bottom of Slat @
Soffit

Date: 04/2024

TerraSlat Detail Set-Single Layer Horizontal Layout



SCALE: 6"=1'-0"

NOTES:

1. PANEL VERTICAL AND HORIZONTAL JOINT SPACING SHOULD BE 3/8" TYPICAL.

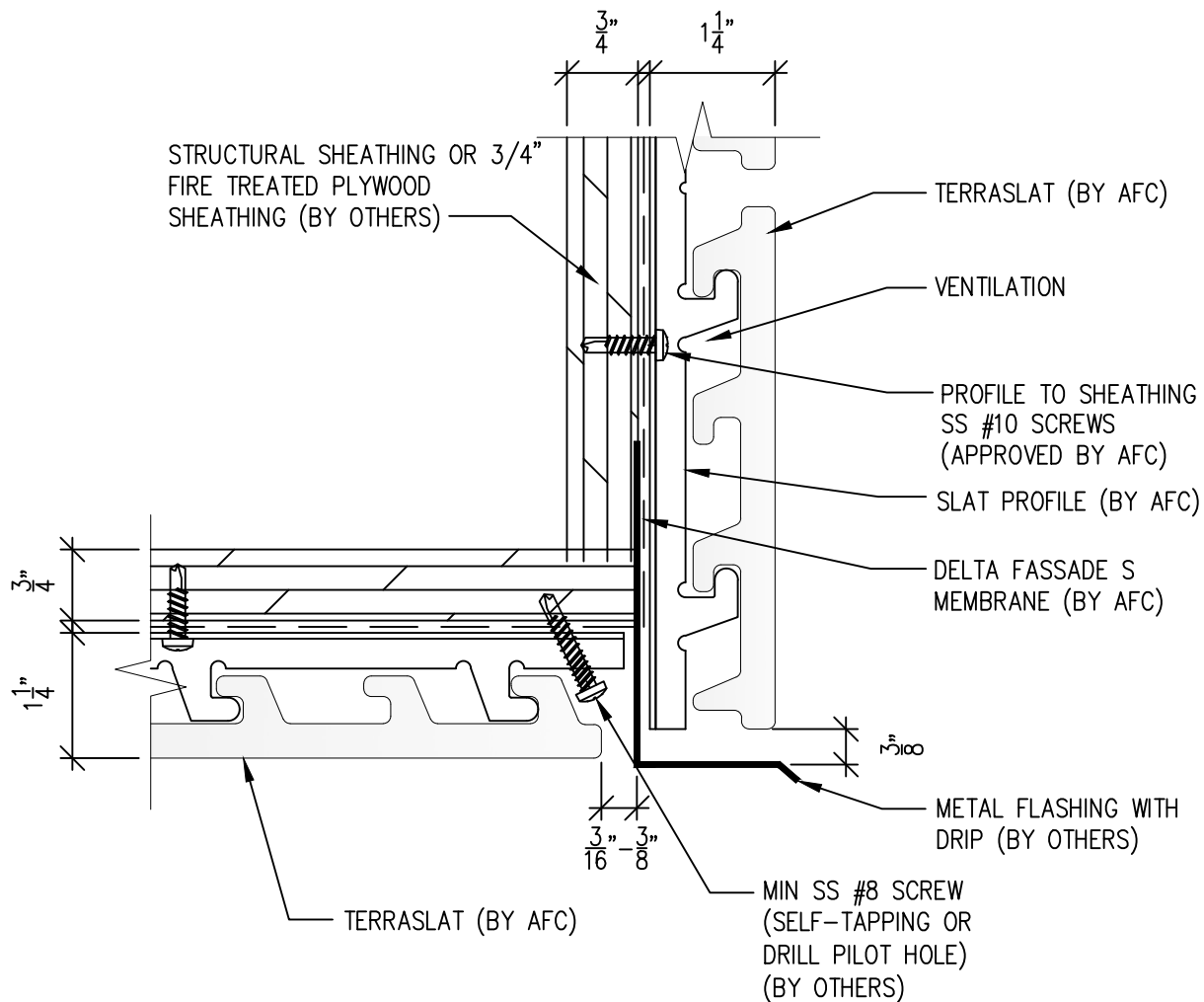


(303) 972-5107
6901 S Pierce St #180
Littleton, CO 80128
www.americanfibercement.com

Ref.:
Bottom of Slat @
F.C.P Soffit

Date: 04/2024

TerraSlat Detail Set-Single Layer Horizontal Layout



SCALE: 6"=1'-0"

NOTES:

1. PANEL VERTICAL AND HORIZONTAL JOINT SPACING SHOULD BE 3/8" TYPICAL.



(303) 972-5107
6901 S Pierce St #180
Littleton, CO 80128

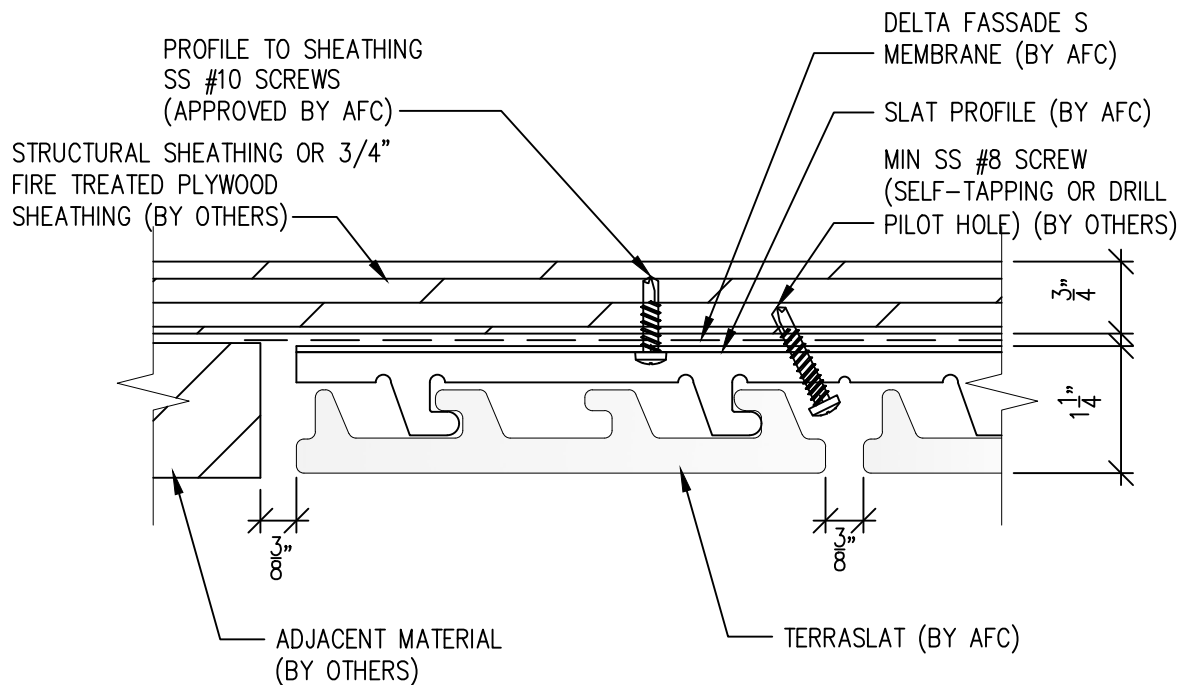
www.americanfibercement.com

Ref.:

Bottom of Slat @
F.C.P Soffit(Alternate)

Date: 04/2024

TerraSlat Detail Set-Single Layer Horizontal Layout



SCALE: 6"=1'-0"

NOTES:

1. PANEL VERTICAL AND HORIZONTAL JOINT SPACING SHOULD BE 3/8" TYPICAL.



(303) 972-5107
6901 S Pierce St #180
Littleton, CO 80128

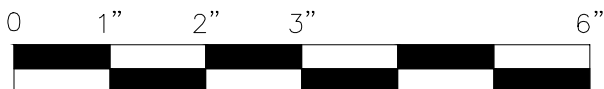
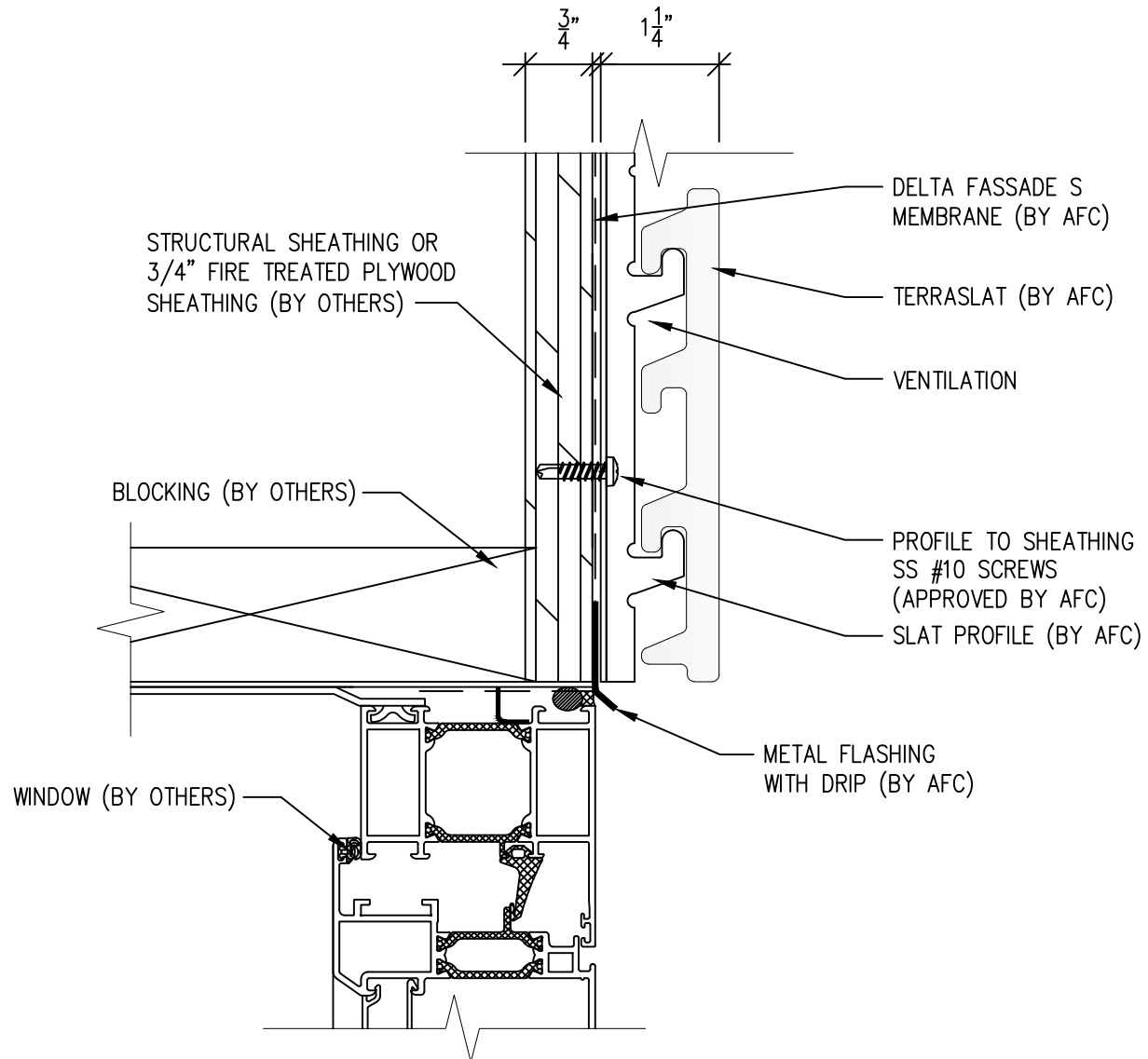
www.americanfibercement.com

Ref.:

Soffit Termination @
Adjacent Material

Date: 04/2024

TerraSlat Detail Set-Single Layer Horizontal Layout



SCALE: 6"=1'-0"

NOTES:

1. PANEL VERTICAL AND HORIZONTAL JOINT SPACING SHOULD BE 3/8" TYPICAL.

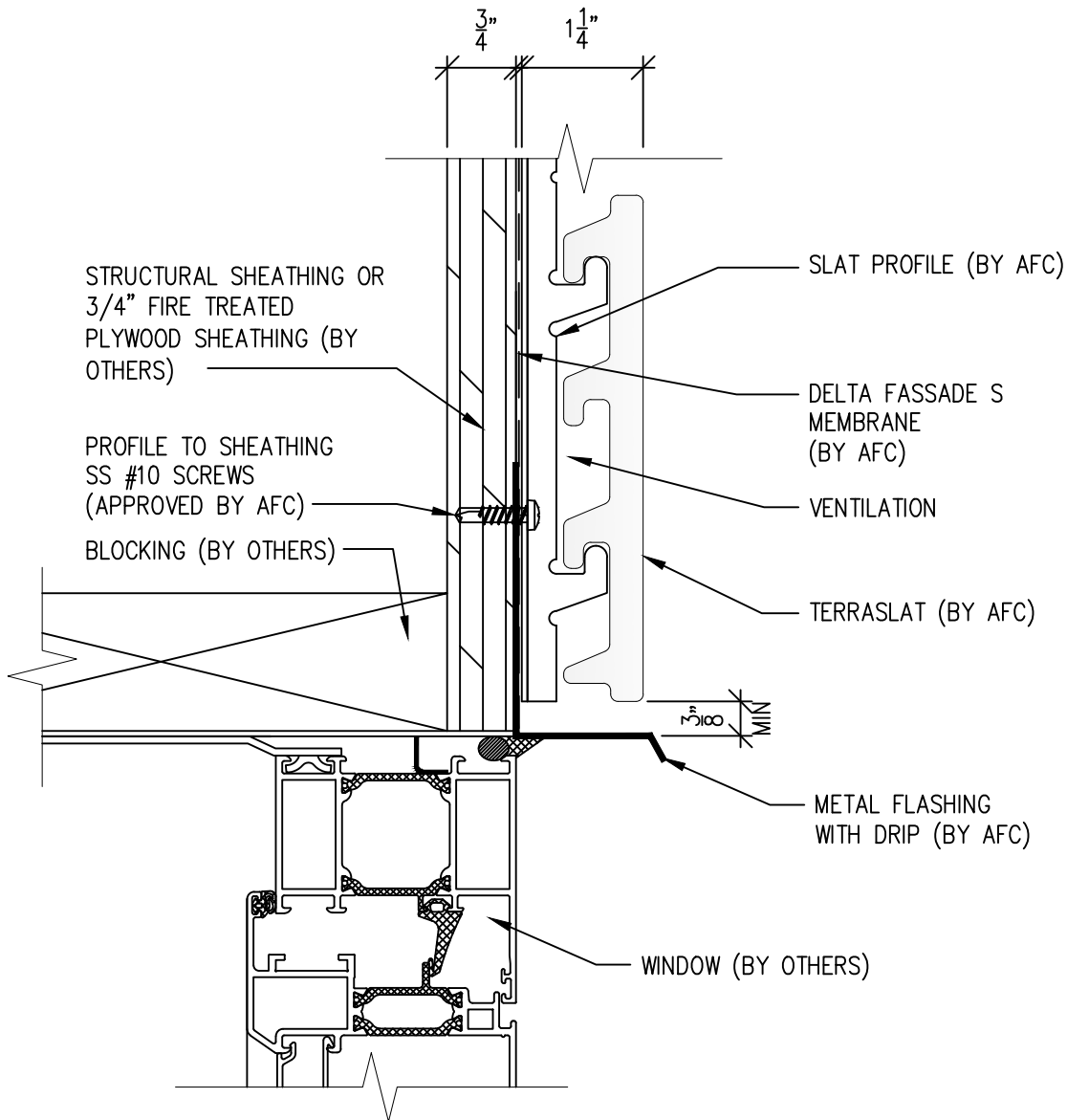


(303) 972-5107
6901 S Pierce St #180
Littleton, CO 80128
www.americanfibercement.com

Ref.:
Bottom of Slat @
Window Head

Date: 04/2024

TerraSlat Detail Set-Single Layer Horizontal Layout



SCALE: 6"=1'-0"

NOTES:

1. PANEL VERTICAL AND HORIZONTAL JOINT SPACING SHOULD BE 3/8" TYPICAL.



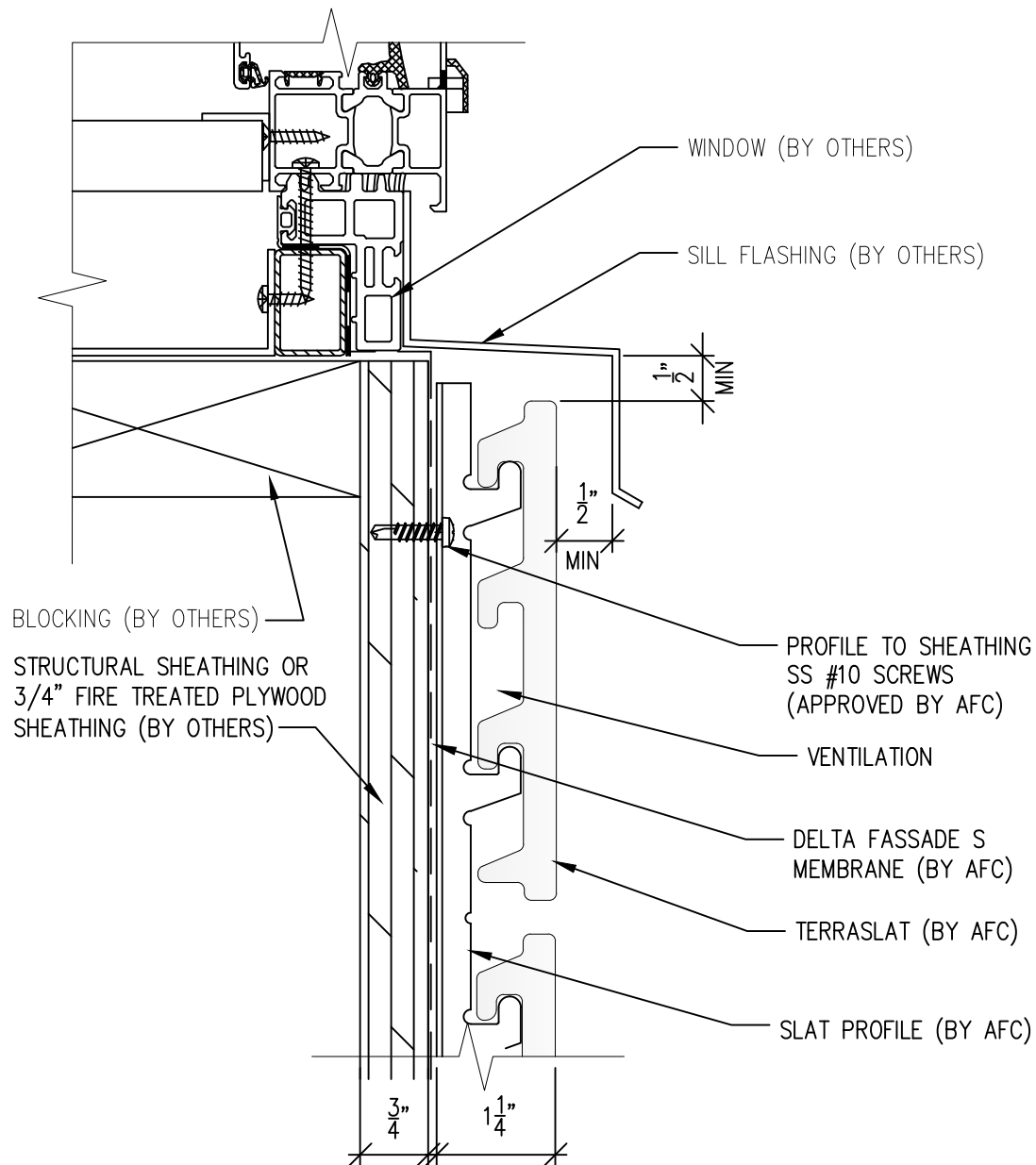
(303) 972-5107
6901 S Pierce St #180
Littleton, CO 80128

www.americanfibercement.com

Ref.:
Bottom of Slat @
Window Head (Alternate)

Date: 04/2024

TerraSlat Detail Set-Single Layer Horizontal Layout



SCALE: 6"=1'-0"

NOTES:

1. PANEL VERTICAL AND HORIZONTAL JOINT SPACING SHOULD BE 3/8" TYPICAL.



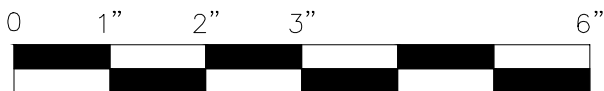
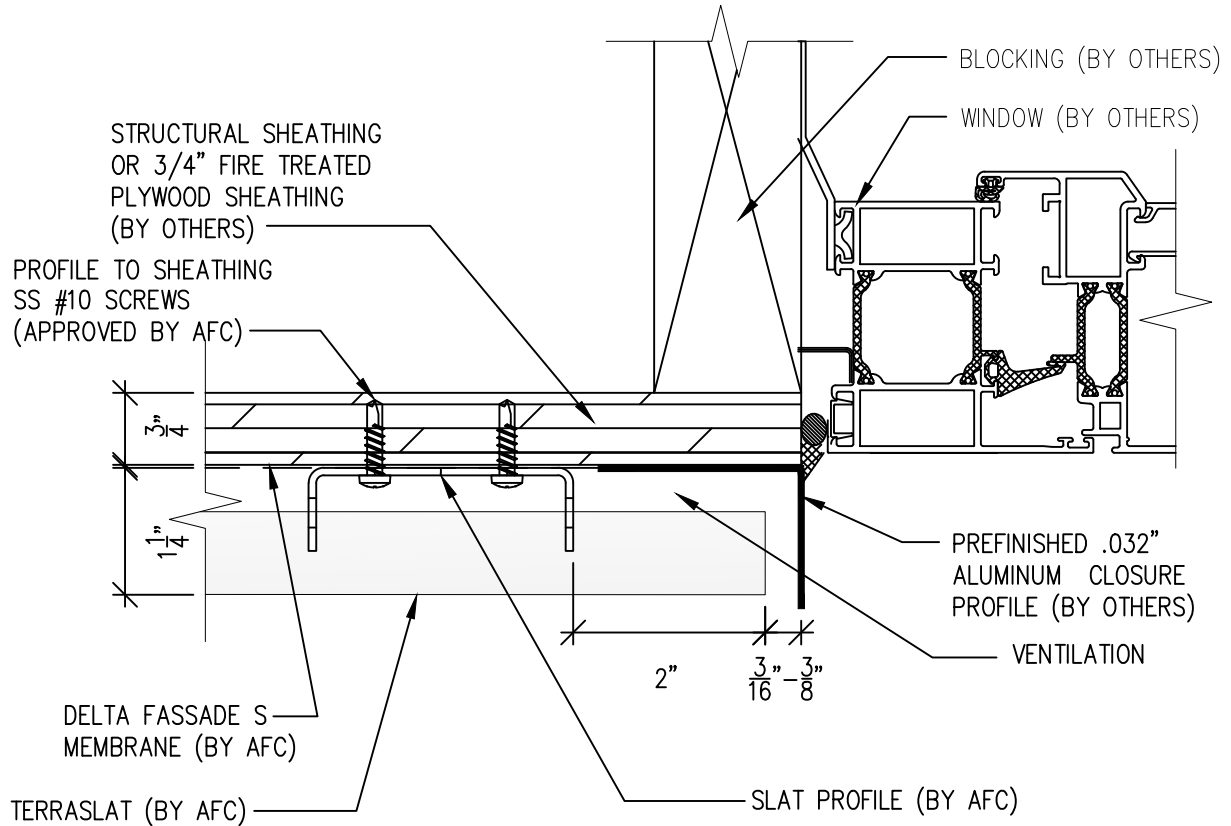
(303) 972-5107
6901 S Pierce St #180
Littleton, CO 80128

www.americanfibercement.com

Ref.:
Top of Slat @
Window Sill

Date: 04/2024

TerraSlat Detail Set-Single Layer Horizontal Layout



SCALE: 6"=1'-0"

NOTES:

1. PANEL VERTICAL AND HORIZONTAL JOINT SPACING SHOULD BE 3/8" TYPICAL.

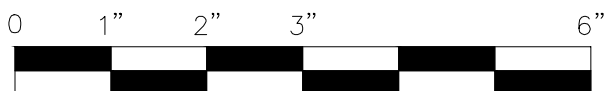
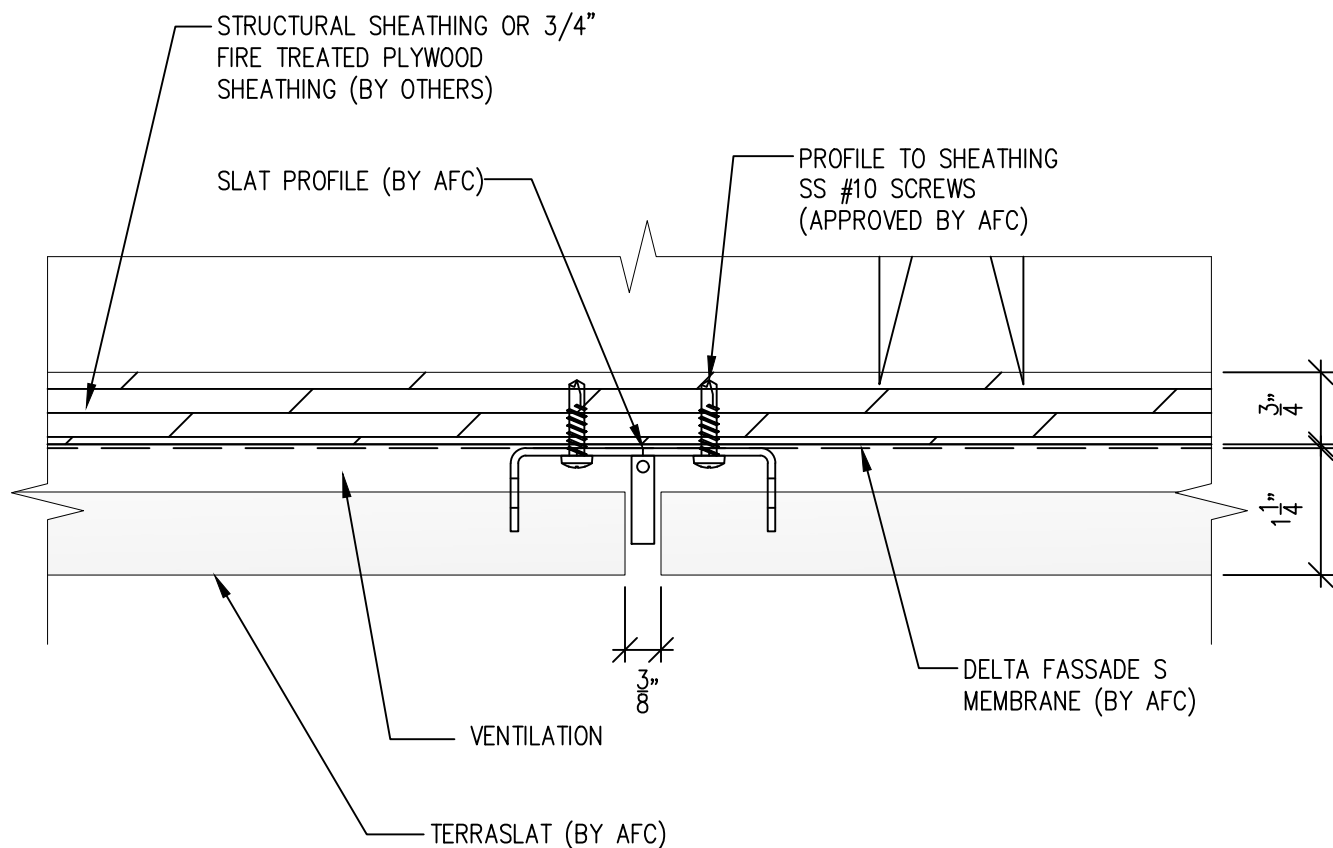


(303) 972-5107
6901 S Pierce St #180
Littleton, CO 80128
www.americanfibercement.com

Ref.:
Slat Edge @
Window Jamb

Date: 04/2024

TerraSlat Detail Set-Single Layer Horizontal Layout



SCALE: 6"=1'-0"

NOTES:

1. PANEL VERTICAL AND HORIZONTAL JOINT SPACING SHOULD BE 3/8" TYPICAL.

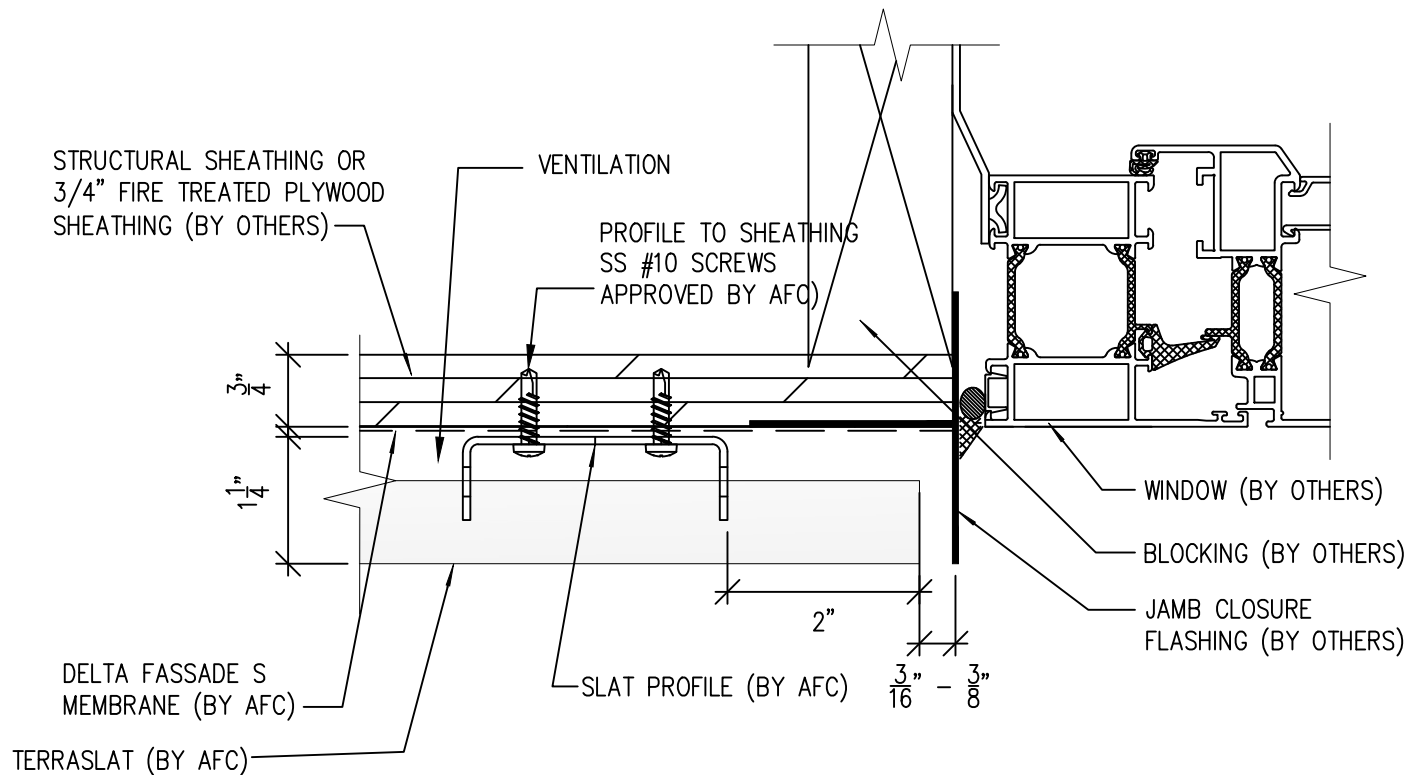


(303) 972-5107
6901 S Pierce St #180
Littleton, CO 80128
www.americanfibercement.com

Ref.:
Vertical Slat Joint

Date: 04/2024

TerraSlat Detail Set-Single Layer Horizontal Layout



SCALE: 6"=1'-0"

NOTES:

1. PANEL VERTICAL AND HORIZONTAL JOINT SPACING SHOULD BE 3/8" TYPICAL.



(303) 972-5107
6901 S Pierce St #180
Littleton, CO 80128

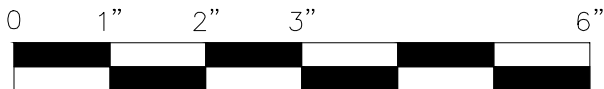
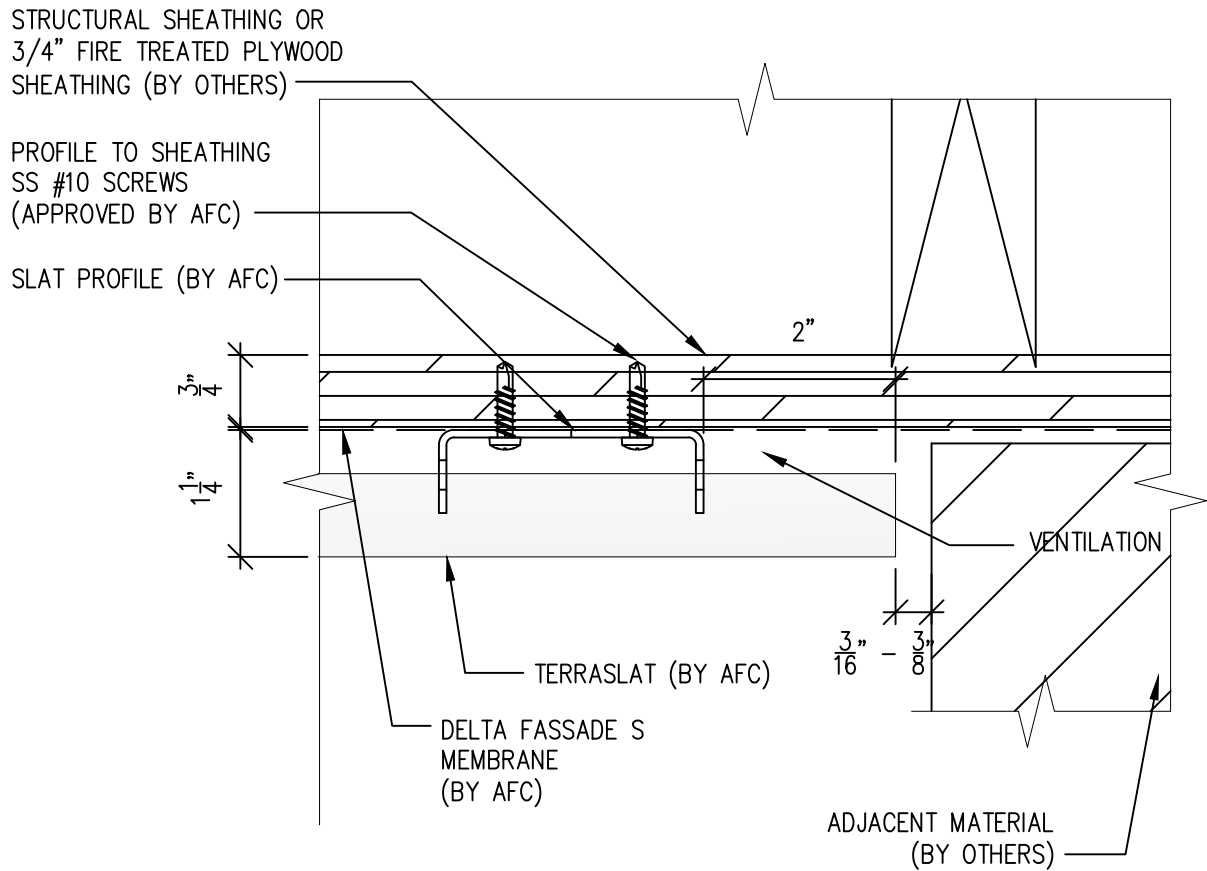
www.americanfibercement.com

Ref.:

Slat Edge @ Window Jamb
Alternate

Date: 04/2024

TerraSlat Detail Set-Single Layer Horizontal Layout



SCALE: 6"=1'-0"

NOTES:

1. PANEL VERTICAL AND HORIZONTAL JOINT SPACING SHOULD BE 3/8" TYPICAL.

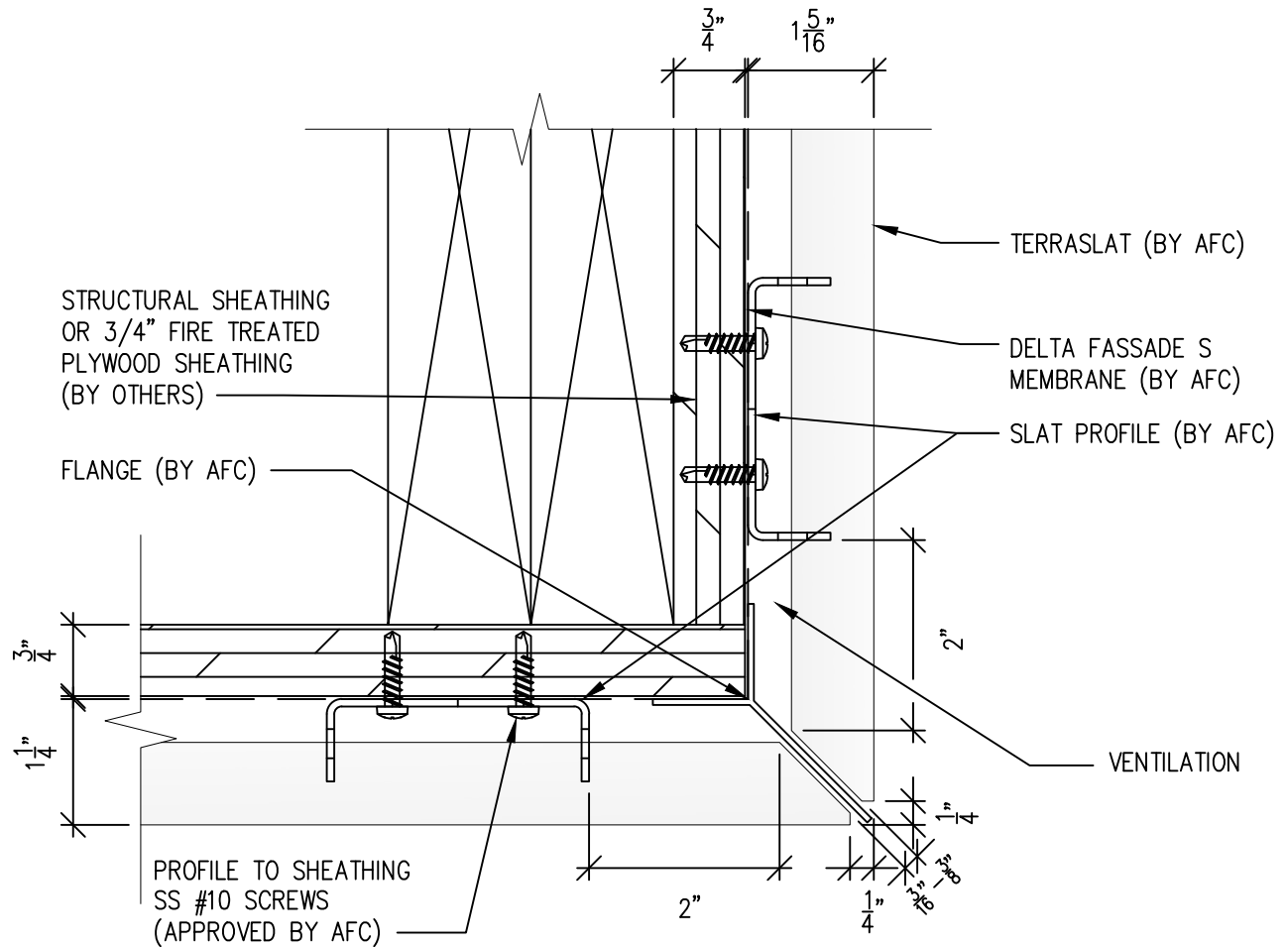


(303) 972-5107
6901 S Pierce St #180
Littleton, CO 80128
www.americanfibercement.com

Ref.:
Slat Edge @
Butt Joint

Date: 04/2024

TerraSlat Detail Set-Single Layer Horizontal Layout



SCALE: 6"=1'-0"

NOTES:

1. PANEL VERTICAL AND HORIZONTAL JOINT SPACING SHOULD BE 3/8" TYPICAL.



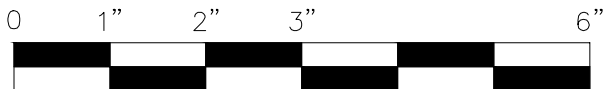
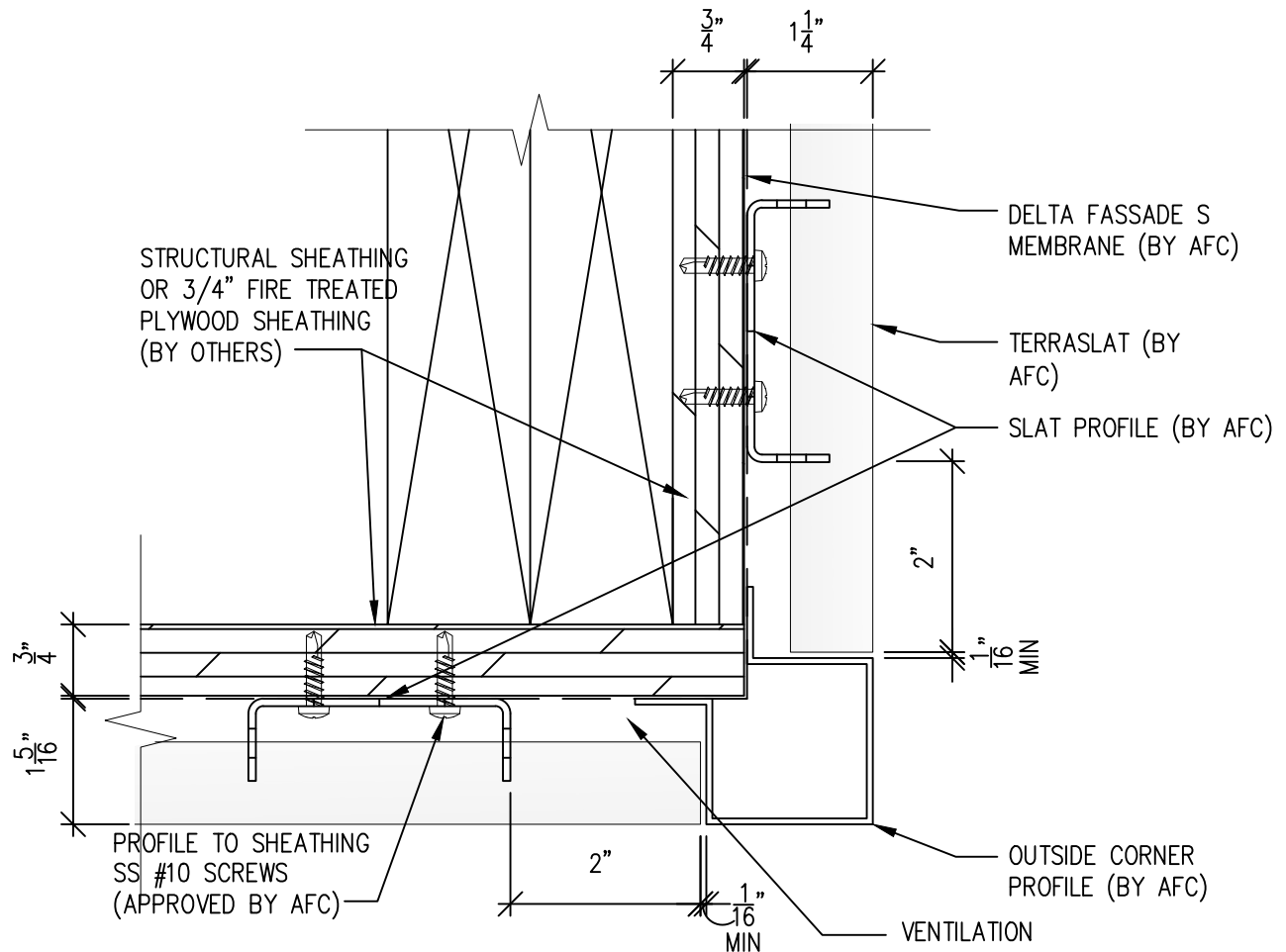
(303) 972-5107
6901 S Pierce St #180
Littleton, CO 80128

www.americanfibercement.com

Ref.:
Slats @
Outside Corner

Date: 04/2024

TerraSlat Detail Set-Single Layer Horizontal Layout



SCALE: 6"=1'-0"

NOTES:

1. PANEL VERTICAL AND HORIZONTAL JOINT SPACING SHOULD BE 3/8" TYPICAL.



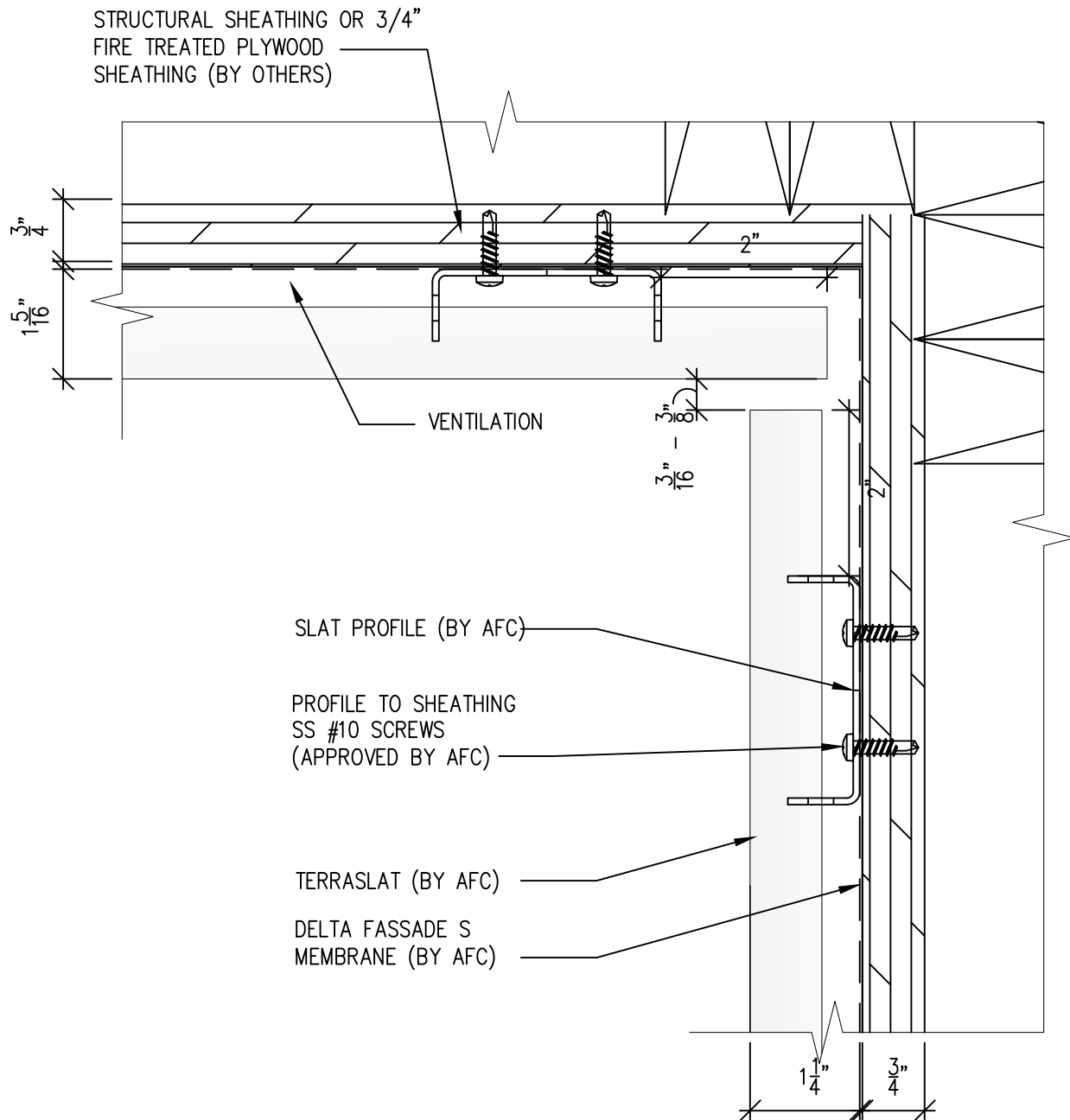
(303) 972-5107
6901 S Pierce St #180
Littleton, CO 80128

www.americanfibercement.com

Ref.:
Slat @
Outside Corner

Date: 04/2024

TerraSlat Detail Set-Single Layer Horizontal Layout



SCALE: 6"=1'-0"

NOTES:

1. PANEL VERTICAL AND HORIZONTAL JOINT SPACING SHOULD BE 3/8" TYPICAL.



(303) 972-5107
6901 S Pierce St #180
Littleton, CO 80128
www.americanfibercement.com

Ref.:
Slat @
Inside Corner

Date: 04/2024